

[ITC HOLDINGS](#)[ITC MICHIGAN](#)[ITC MIDWEST](#)[ITC GREAT PLAINS](#)[News](#)[Community](#)[Partners in Business](#)[Investors](#)[Careers](#)[About Us](#)[ITC HOLDINGS > Community > Vegetation Management](#)

## Community

[Environmental](#)

### [Vegetation Management](#)

[Associations and Partnerships](#)[Safety](#)[Awards and Recognition](#)[Charitable Giving Program](#)

## Vegetation Management

Nothing brings a halt to daily life faster than the loss of power. Outages and blackouts are inconvenient, costly and potentially dangerous. The Blackout of 2003 left 50 million people in the Northeast, Midwest and Canada without power for days. It cost our economy billions of dollars in lost productivity.

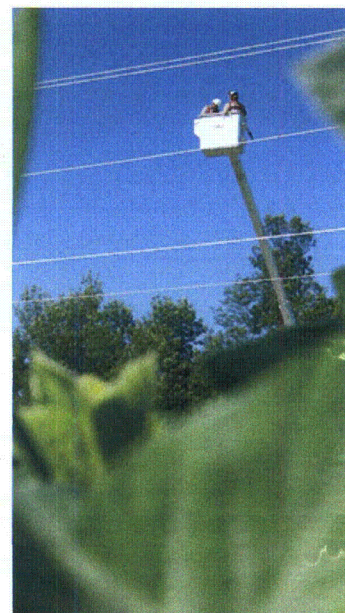
Hospitals, long-term care facilities, and schools are just a few examples of vital infrastructure that depend on uninterrupted power to serve our communities.

The underlying cause of the Blackout, tree contact with power lines in northern Ohio, is well documented.

Trees and high voltage power lines are a hazardous combination. Trees that come into contact with transmission lines can cause serious system outages and pose a significant safety threat to residents and the public.

Even when there is no direct contact, electricity can arc from transmission lines to nearby tree branches, posing personal safety and fire issues.

ITC is committed to maintaining the Vegetation in and around our corridors in an effort to provide you with uninterrupted service and to keep you and your family safe.



- [Fast Facts](#)
- [Trees and Transmission Lines](#)
- [Vegetation Management Policy](#)

## Planting Trees to Conserve Energy

Planting the right tree in the right place can help conserve energy by providing wind protection, shade and cool air. This can add beauty, privacy, and wildlife habitat to the landscape while also protecting the safety and reliability of the transmission system. The link below provides tips on landscaping for energy conservation. **Please keep in mind that ITC's Vegetation Management Policy places strict limitations on the types and sizes of vegetation permitted in and around transmission line corridors. Therefore it is important to avoid planting trees or shrubs that can grow more than 12 feet high in areas immediately adjacent to our corridors.**

[How to Plant Trees to Conserve Energy](#)[search...](#)[Sitemap](#) [Contact Us](#)

© Copyright 2011 ITC HOLDINGS CORP.