


REVISIONS					
ZONE	REV	DESCRIPTION	DATE	CHK'D	APPROVED
	1	PICTORIAL CHANGE ECO 15420	07/05/11	JFOX	MPW 07/05/11
	A	CORRECT NSN # ECO 15432	07/22/11	JFOX	MPW 07/22/11
	B	ADD INPUT & OUTPUT MARKING	11/23/11	JFOX	MPW 11/23/11
	C	ADD UID LABELS ECO 15525	01/14/12	Jfox	MPW 01/14/12



QTY REQ'D		PRD NO	CODE IDENT NO	PART OR IDENTIFYING NO		NOMENCLATURE OR DESCRIPTION		REMARKS	REF. DIMI PART NO
PARTS LIST									
UNLESS OTHERWISE SPECIFIED DIMENSIONS ARE IN INCHES TOLERANCES ON: DECIMAL FRACTION $\pm 1/64$ XX $\pm .01$ ANGLE $\pm 1/8^\circ$ XXX $\pm .005$ XXXX $\pm .0005$ DO NOT SCALE DRAWING MATERIAL: FINISH:				CONTRACT NO:		DATE		 10 SUMMIT DRIVE WOBURN, MA 01801 CAGE NUMBER 82187 New England DRAWING TITLE OUTLINE WD-202X005G	
				DRWN: J FOX		03/29/11			
STANDARD SHIP PRACTICES OF HERLEY-IND APPLY TO THIS DRAWING REMOVE ALL BURS & SHARP EDGES UNLESS OTHERWISE NOTED UNLESS OTHERWISE SPECIFIED, FINISH MACHINE SURFACES TO .63 U INCH OR A SURFACE CONTROLLED BY A TOTAL TOLERANCE OF .010 INCH OR LESS				CHK:				SIZE C CAGE NO. 32187 DRAWING NO. 040038 REV. C	
				ENG: M WONSON		03/29/11			
NEXT ASSY USED ON APPLICATION				APPD:				SCALE: 1 : 1 WT: SHEET 1 OF 1	
				APPD:					

4

3

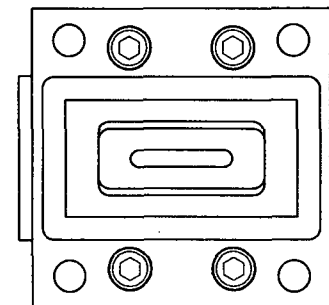
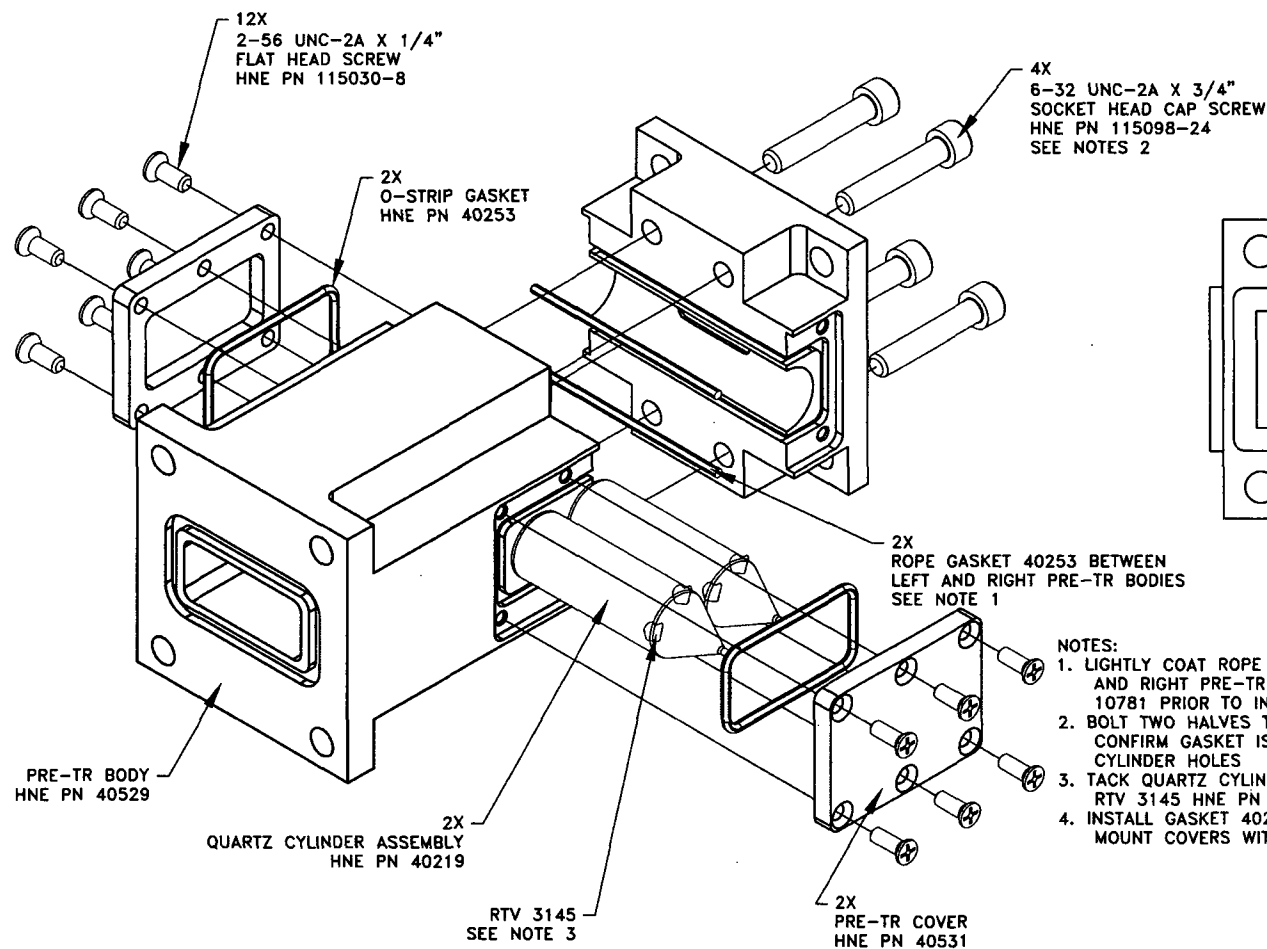
2

CAGE NO.	DWG. NO.	REV	SHT	DWG. RELEASE DATE
32187	040474	A	1	

BUILD SEQUENCE:

- 40475 ASSEMBLE PRE-TR HALVES TOGETHER
SEE NOTES BELOW

REVISIONS				
ZONE	REV	DESCRIPTION	DATE	CHK'D
	A	CHANGE PER ECO 15485	11/07/11	h/h/11



QTY	REV	PN	CODE	IDENT NO	PART OR IDENTIFYING NO	NOMENCLATURE OR DESCRIPTION	REMARKS	REF. HMDI PART NO
PARTS LIST								
CONTRACT NO:						DATE	HERLEY New England	
DRWN: J FOX						09/14/11	DRAWING TITLE	
CHK:						09/15/11	PRE-TR ASSEMBLY MD-202X005G	
ENG: M WONSON							SIZE	CAGE NO.
APPD:							C	32187
APPD:							SCALE: 2/1	WT:
								SHEET

PROPRIETARY INFORMATION
This print is the sole property of HERLEY-IND and is not to be used for any purpose other than Quotation or Procurement for HERLEY-IND

UNLESS OTHERWISE SPECIFIED
DIMENSIONS ARE IN INCHES
TOLERANCES ON:
DECIMAL FRACTION $\pm 1/64$
XX $\pm .01$
XXX $\pm .005$
XXXX $\pm .0005$
DO NOT SCALE DRAWING

MATERIAL:

FINISH:

CONTRACTOR'S SIGNATURE

DATE

STANDARD SHOP PRACTICES OF HERLEY-IND APPLY TO THIS
DRAWING
REMOVE ALL BURRS & SHARP EDGES UNLESS OTHERWISE
NOTED

UNLESS OTHERWISE SPECIFIED / FINISH MACHINE SURFACES TO
63 u INCH ON A SURFACE CONTROLLED BY A TOTAL TOLERANCE
OF .010 INCH OR LESS

NEXT ASS'Y USED ON
APPLICATION

4

3

2

1

Herley New England
10 Sonar Dr.
Woburn, MA 01801



Neopo
013.359
03/13/2012
Mailed From 01801

US POSTAGE

U.S. NUCLEAR REGULATORY COMM
OFFICE OF FEDERAL STATE MAT. &
ENVIRONMENTAL MGMT PROGRAM
DIVISION OF MATERIALS SAFETY & STATE AGREEMENT
WASHINGTON, DC 20555-0001

Herley New England

Application for License Renewal

20-13270-02E

6/15/2012