



This map and all data contained within are supplied as is with no warranty. ENTRIX, Inc. expressly disclaims responsibility for damages or liability from any claims that may arise out of the use or misuse of this map. It is the sole responsibility of the user to determine if the data on this map meets the user's needs. This map was not created as survey data, nor should it be used as such. It is the user's responsibility to obtain proper survey data, prepared by a licensed surveyor, where required by law.

Exhibit 1-1 LNP Site - General Location Map



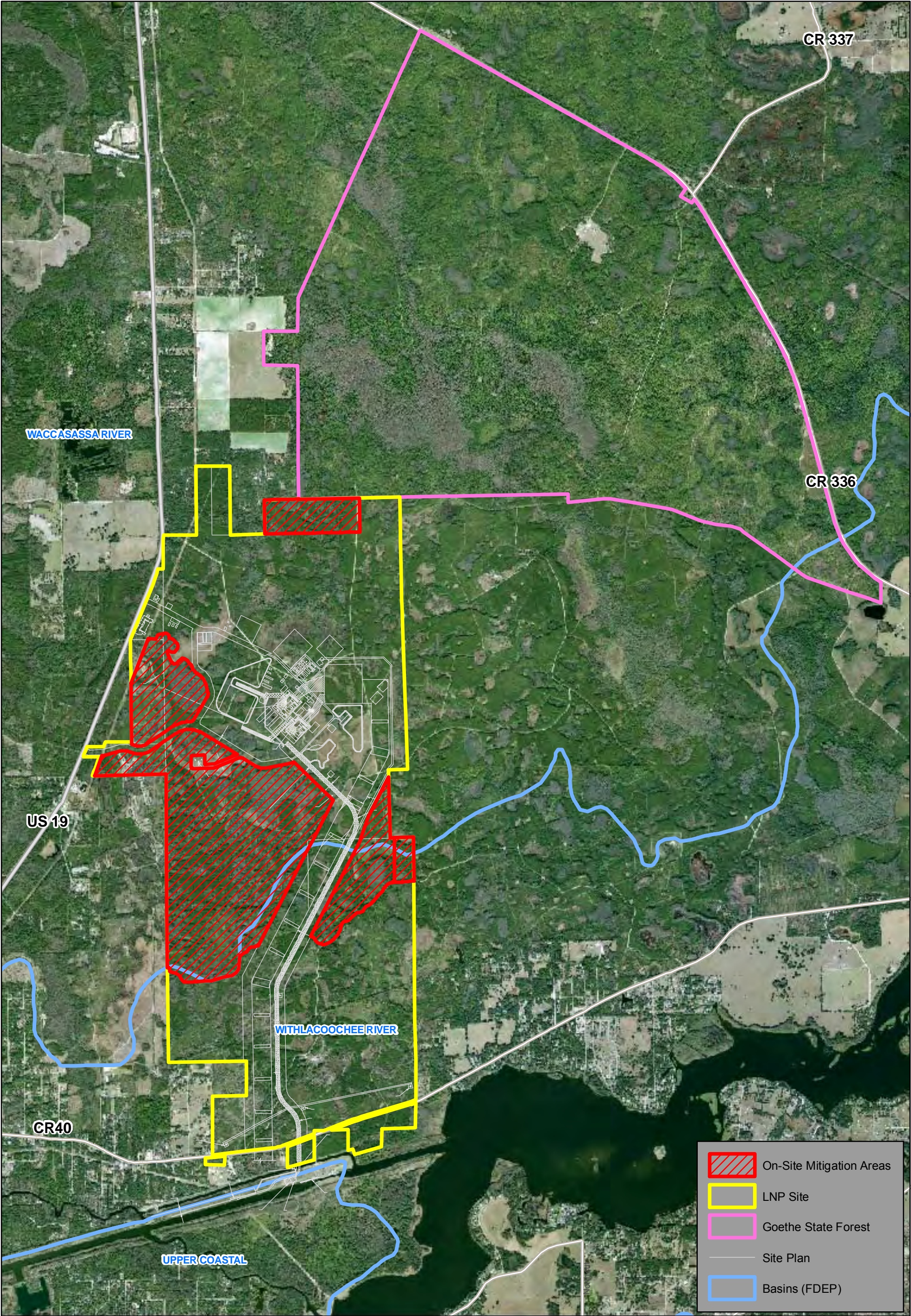
3905 Crescent Park Drive
Riverview, FL 33578-3625
ph. (813) 664-4500
fx (813) 664-0440

www.entrix.com

Coordinate System:
NAD 1983 UTM Zone 17N feet

Exhibit INT412

June 26, 2012



This map and all data contained within are supplied as is with no warranty. Entrix, Inc. expressly disclaims responsibility for damages or liability from any claims that may arise out of the use or misuse of this map. It is the sole responsibility of the user to determine if the data on this map meets the user's needs. This map was not created as survey data, nor should it be used as such. It is the user's responsibility to obtain proper survey data, prepared by a licensed surveyor, where required by law.

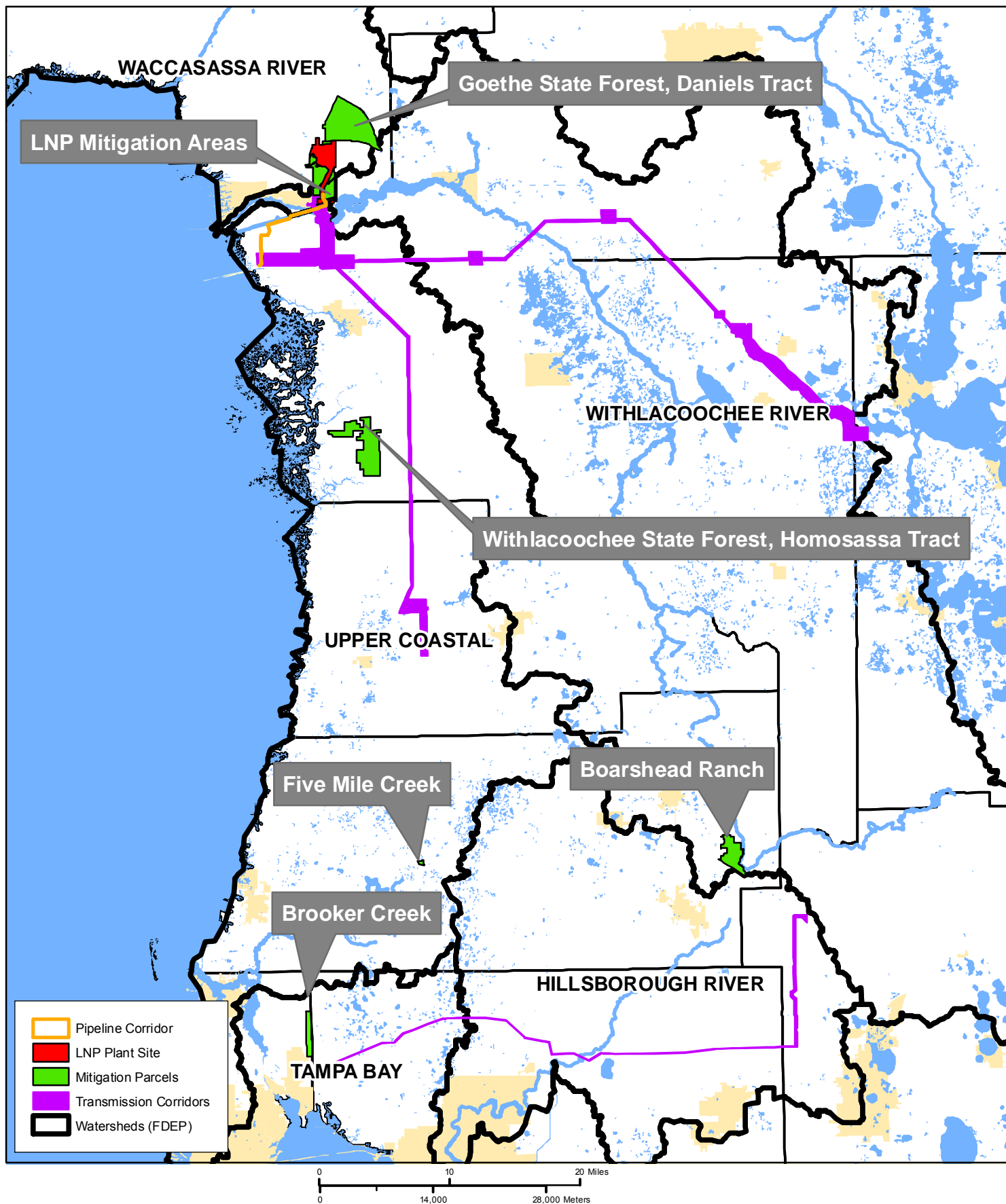
Exhibit 1-2 Project Site
Progress Energy
Levy County, FL



3905 Crescent Park Drive
Riverview, FL 33578-3625
ph. (813) 664-4500
fx (813) 664-0440

www.entrix.com

Coordinate System:
NAD 1983 UTM Zone 17N feet



This map and all data contained within are supplied as is with no warranty. ENTRIX, Inc. expressly disclaims responsibility for damages or liability from any claims that may arise out of the use or misuse of this map. It is the sole responsibility of the user to determine if the data on this map meets the user's needs. This map was not created as survey data, nor should it be used as such. It is the user's responsibility to obtain proper survey data, prepared by a licensed surveyor, where required by law.

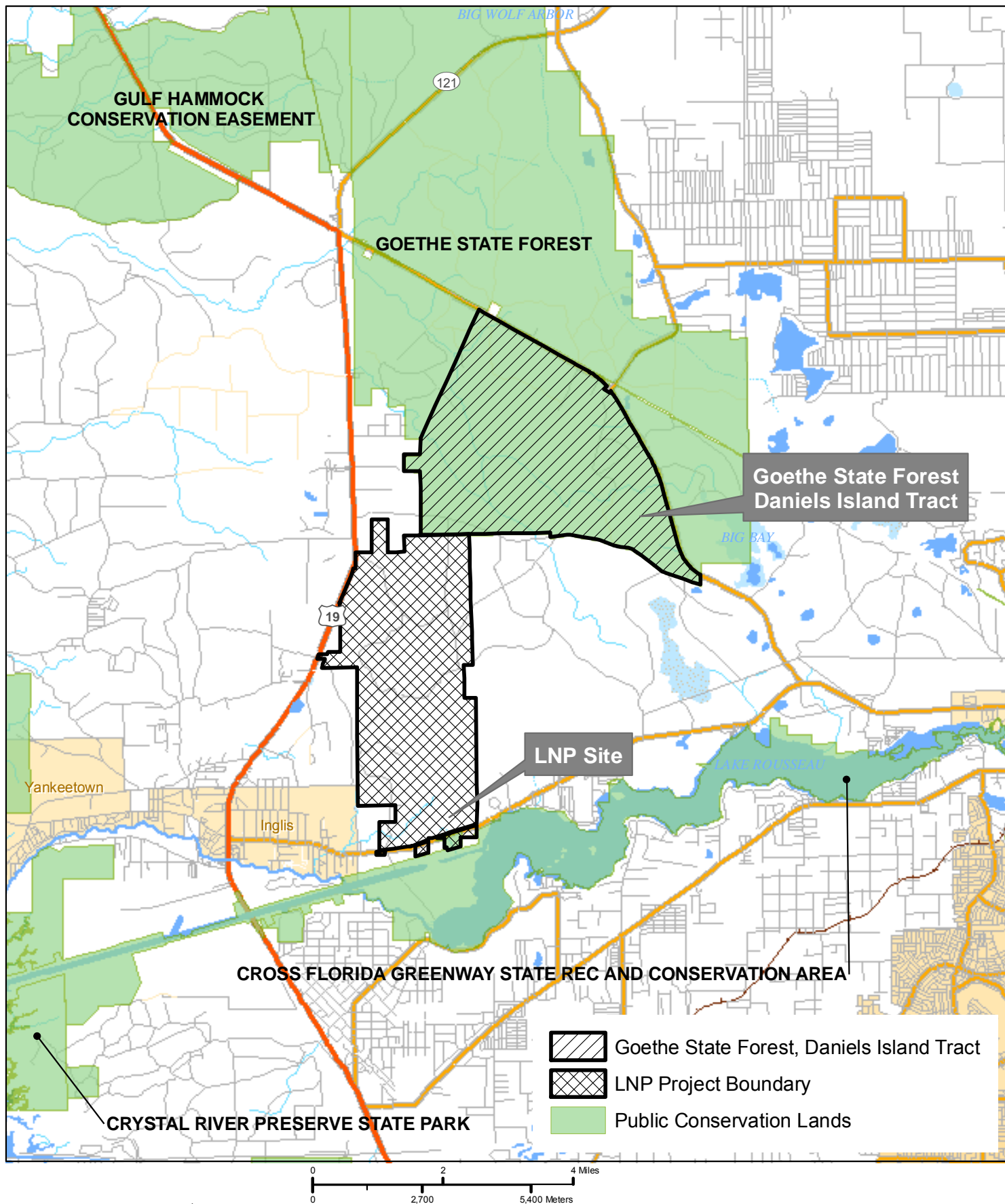
Exhibit 1-4 Mitigation Parcels Relative to Project Site



3905 Crescent Park Drive
Riverview, FL 33578-3625
ph. (813) 664-4500
fx (813) 664-0440

www.entrix.com

Coordinate System:
NAD 1983 Florida State Plane West



This map and all data contained within are supplied as is with no warranty. ENTRIX, Inc. expressly disclaims responsibility for damages or liability from any claims that may arise out of the use or misuse of this map. It is the sole responsibility of the user to determine if the data on this map meets the user's needs. This map was not created as survey data, nor should it be used as such. It is the user's responsibility to obtain proper survey data, prepared by a licensed surveyor, where required by law.

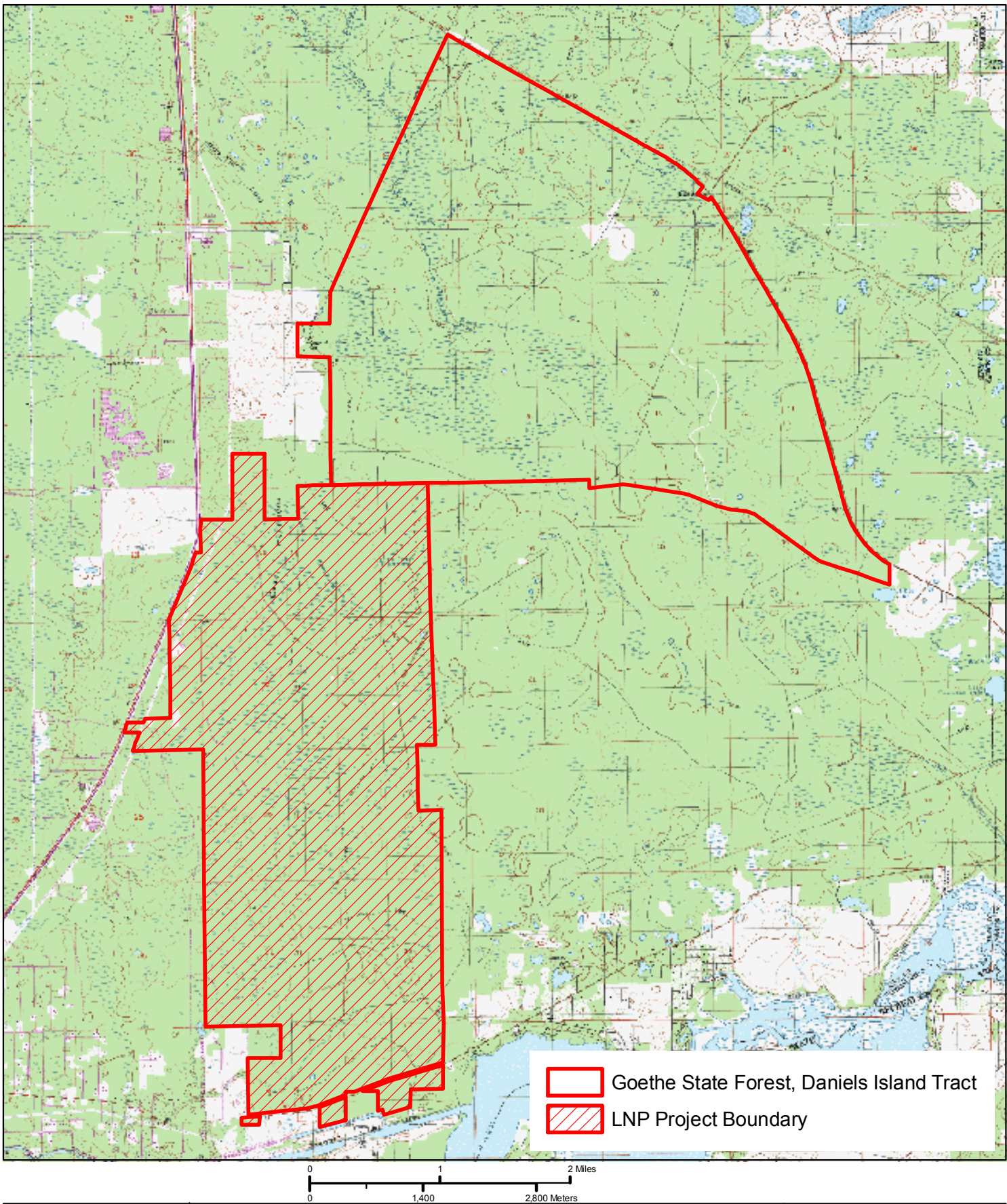
Exhibit 2-1-1

LNP Site and Goethe State Forest Daniels Island Tract - Location Map



3905 Crescent Park Drive
Riverview, FL 33578-3625
www.entrix.com

Coordinate System:
Florida Albers



This map and all data contained within are supplied as is with no warranty. ENTRIX, Inc. expressly disclaims responsibility for damages or liability from any claims that may arise out of the use or misuse of this map. It is the sole responsibility of the user to determine if the data on this map meets the user's needs. This map was not created as survey data, nor should it be used as such. It is the user's responsibility to obtain proper survey data, prepared by a licensed surveyor, where required by law.

Exhibit 2-3-2
LNP Site and GSF
Daniels Island Tract
USGS Quadrangle Map

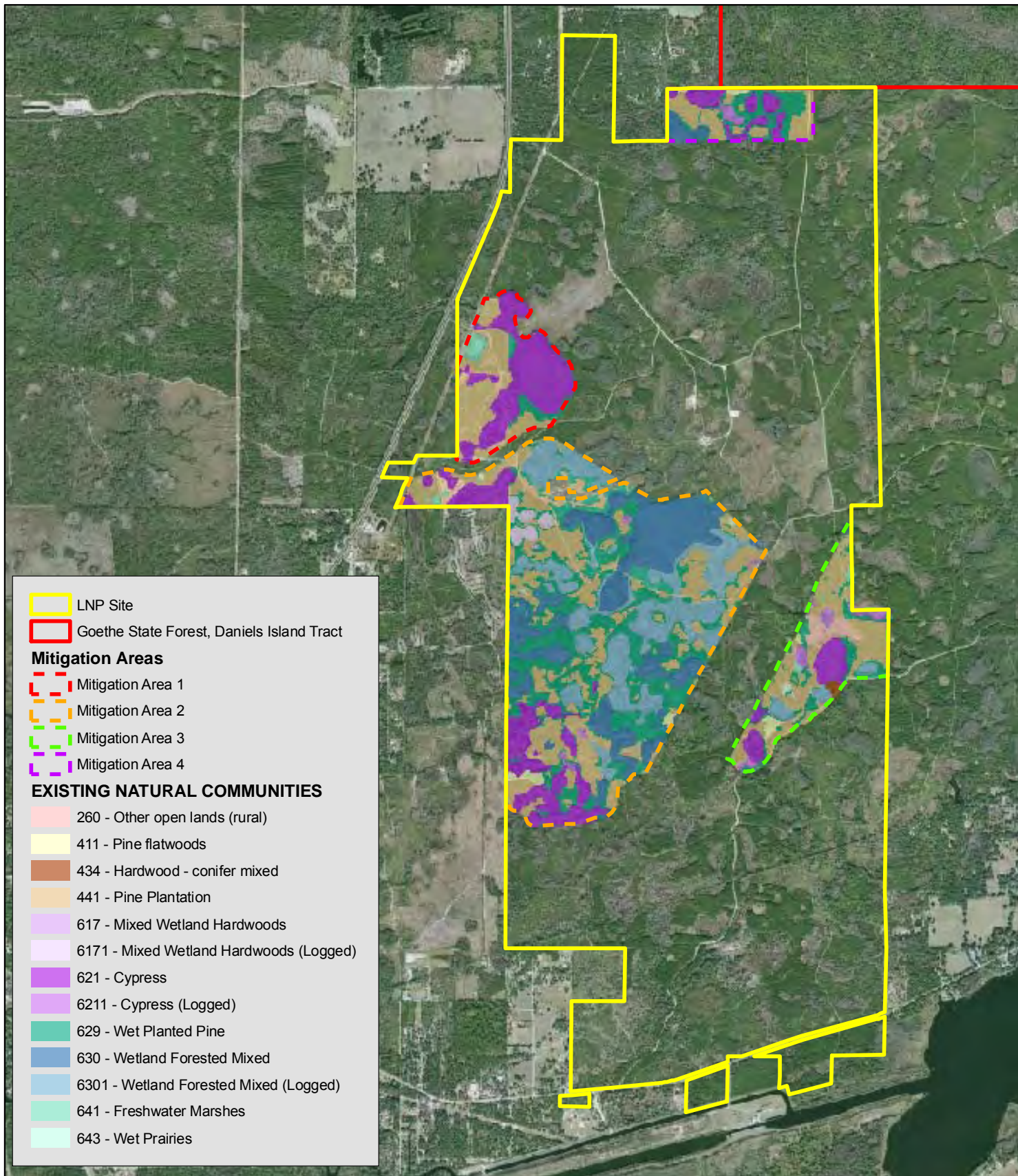


Image: USGS Quad
 Yankeetown,
 Yankeetown SE
 and GSF



3905 Crescent Park Drive ph. (813) 664-4500
 Riverview, FL 33578-3625 fx (813) 664-0440
www.entrix.com

Coordinate System:
 Florida Albers



0 3,350 6,700 Feet
0 930 1,860 Meters

This map and all data contained within are supplied as is with no warranty. ENTRIX, Inc. expressly disclaims responsibility for damages or liability from any claims that may arise out of the use or misuse of this map. It is the sole responsibility of the user to determine if the data on this map meets the user's needs. This map was not created as survey data, nor should it be used as such. It is the user's responsibility to obtain proper survey data, prepared by a licensed surveyor, where required by law.

Exhibit 2-4-6 LNP Site Existing Land Use and Land Cover

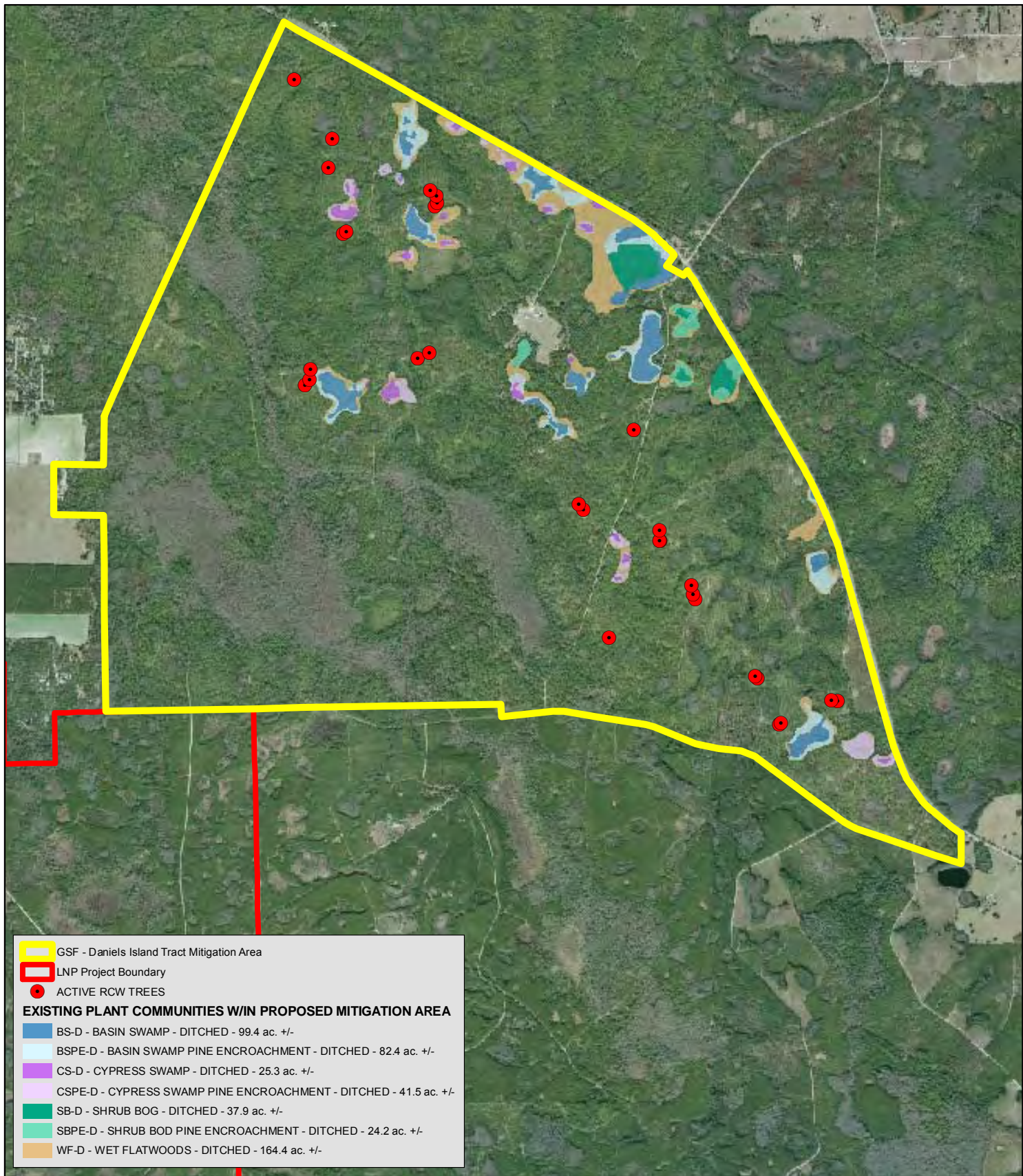


Image: 2009



3905 Crescent Park Drive
Riverview, FL 33578-3625
ph. (813) 664-4500
fx (813) 664-0440
www.entrix.com

Coordinate System:
NAD 1983 Florida State Plane West



0 3,500 7,000 Feet
0 860 1,720 Meters

This map and all data contained within are supplied as is with no warranty. ENTRIX, Inc. expressly disclaims responsibility for damages or liability from any claims that may arise out of the use or misuse of this map. It is the sole responsibility of the user to determine if the data on this map meets the user's needs. This map was not created as survey data, nor should it be used as such. It is the user's responsibility to obtain proper survey data, prepared by a licensed surveyor, where required by law.

Exhibit 2-5-6 GSF - Daniels Island Tract Existing Land Use and Land Cover Mitigation Wetlands

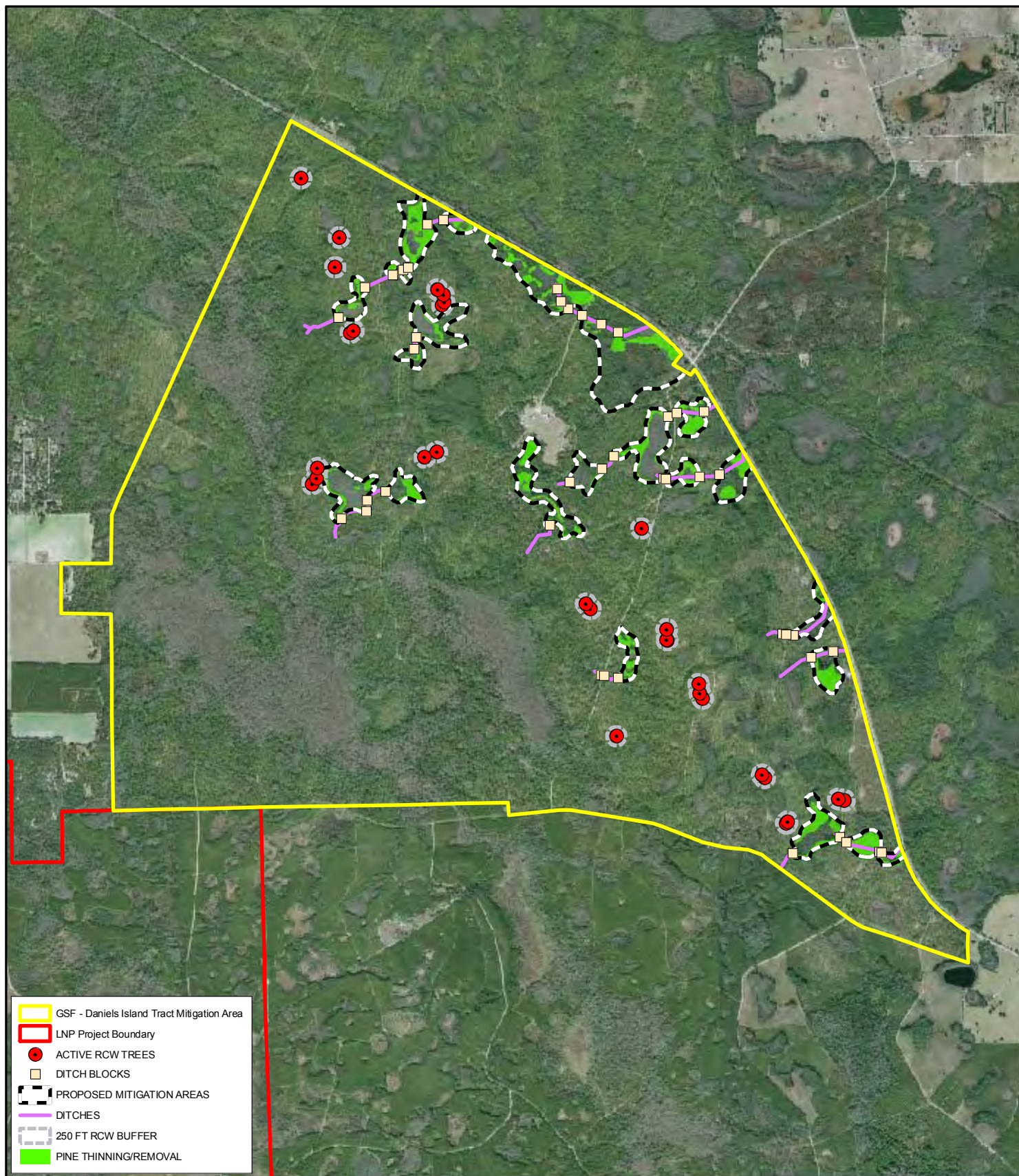


Image:2009



3905 Crescent Park Drive
Riverview, FL 33578-3625
www.entrix.com

Coordinate System:
NAD 1983 Florida State Plane West



0 3,500 7,000 Feet
0 900 1,800 Meters

This map and all data contained within are supplied as is with no warranty. ENTRIX, Inc. expressly disclaims responsibility for damages or liability from any claims that may arise out of the use or misuse of this map. It is the sole responsibility of the user to determine if the data on this map meets the user's needs. This map was not created as survey data, nor should it be used as such. It is the user's responsibility to obtain proper survey data, prepared by a licensed surveyor, where required by law.

Exhibit 2-5-8 GSF - Daniels Island Tract Mitigation Activities Map Mitigation Wetlands



Image:2009



3905 Crescent Park Drive
Riverview, FL 33578-3625
www.entrix.com

ph. (813) 664-4500
fx (813) 664-0440
Coordinate System:
NAD 1983 Florida State Plane West