

**PSEG Site  
ESP Application  
Part 5, Emergency Plan**

**SECTION 2**

**ASSIGNMENT OF RESPONSIBILITY**

**1.0      PSEG**

**1.1      Internal Responsibility**

PSEG, licensee of the PSEG Site, has the primary responsibility for planning and implementing emergency measures within the site boundary. In addition to accident mitigation, this responsibility includes accident assessment and the evaluation of any real or potential risk to the public health and safety. Based upon this evaluation, appropriate offsite agencies are promptly notified of the Protective Action Recommendations (PAR) for the affected population areas.

The Manager - Emergency Preparedness (Manager EP) is the individual who is responsible for maintaining emergency preparedness for PSEG. The Manager EP reports to the Director - Regulatory Affairs, who reports to the President and Chief Nuclear Officer. Organization charts showing reporting relationships for emergency preparedness within both the corporate structure and PSEG are presented in Figures 2-1 and 2-2.

Throughout the duration of an emergency, accident mitigation is the responsibility of the Shift Manager (SM). The Technical Support Center (TSC) staff under the direction of the Emergency Duty Officer (EDO) supplies support. Protective Action Recommendations are made from the TSC following its activation. Additional support is available from the Emergency Operations Facility (EOF), which is staffed and may be activated for Alerts and always activates at a Site Area Emergency. Protective Action Recommendations are made from the EOF following its activation.

The Emergency Response Organization at each level of response is described in Section 3. Each emergency manager/supervisor is responsible for maintaining and ensuring the continuity of personnel and resources.

The PSEG Site maintains 24-hour emergency response capability. The normal on-shift complement provides the initial response to an emergency. This group is trained to handle emergency situations (e.g., initiate implementation of the emergency plan, make initial accident assessment, emergency classification, notifications, communications, and protective action recommendations) until the augmented ERO arrives. The ERO is composed of a broad spectrum of personnel with specialties in operations, maintenance, engineering, radiochemistry, radiation protection, material control, fire protection, security, communications, and emergency preparedness who are available and trained to augment on-shift personnel in an emergency. Procedures for training and maintenance of the emergency organization are in place to provide the capability of continuous (24-hour) operations.

**1.2      External Agreements**

PSEG has entered into agreements with the appropriate emergency response organizations which would provide onsite and offsite support in the event of an emergency at the PSEG Site. These agreements are provided in Emergency Plan Attachments 2 and 3. Figures 2-3

**PSEG Site  
ESP Application  
Part 5, Emergency Plan**

and 2-4 show how these organizations interface with PSEG. Figure 2-5 shows how these organizations interface for protective action decision making.

**2.0      Principal Government Jurisdictions in the EPZs**

**2.1      The State of Delaware**

The Delaware Emergency Management Agency (DEMA), Department of Public Safety, has developed the Delaware Radiological Emergency Preparedness (REP) Plan and serves as the lead agency for coordinating state emergency actions as authorized in the Delaware Code Annotated Title 20, Chapter 31.

The Delaware Department of Natural Resources and Environmental Control (DNREC), as authorized by the Delaware Code Annotated Title 7, Chapter 60 is responsible for protecting the environment to include participation in accident assessment, mitigation and recovery efforts in the event of a radiological incident.

The Delaware Department of Health and Social Services (DHSS), as authorized by the Delaware Code Annotated, Title 16, Chapter 1, has the overall responsibility for protecting health and safety of the general public to include accident assessment, social services mitigation and recovery efforts in the event of radiological incident.

The Delaware Department of Agriculture (DDA), as authorized by the Delaware Code Annotated Title 29, Chapter 81, is responsible for protection of agriculture in the interest of health and safety of the public.

The Technical Assessment Center (TAC) develops Delaware's accident assessment and protective action response. The TAC comprises members of the DNREC, DHSS with the Deputy Director of the Division of Public Health (DPH) and Division of Water Resources (DWR) Senior Science Advisor serving as the Co-Chairperson of the TAC. Protective Action Recommendations are developed and provided to the DEMA Director by the TAC Chairperson.

The resources and response organization of the State of Delaware are described in the Delaware Radiological Emergency Plan. The response organization for the State of Delaware is provided as Figure 2-6. The development of protective actions is performed as outlined in Figure 2-5 and discussed in detail in Sections 10 and 11 of this plan.

**2.2      The State of New Jersey**

The Office of Emergency Management (OEM) of New Jersey State Police (NJSP) is granted the authority to assist in supervising and coordinating the emergency response activities of the state government and of all of the political subdivisions as outlined in the New Jersey Civil Defense Act of 1942, Chapter 251, as amended.

The New Jersey Department of Environmental Protection (DEP) is empowered by NJ Radiation Accident Response Act (N.J.S.A. 26:2D-37 et.seq.), to take/recommend radiological protective actions as necessary to protect the public health or welfare. The Superintendent of NJSP is the agency head that acts as New Jersey's emergency coordinator responsible for directing and/or coordinating all emergency response by New

**PSEG Site  
ESP Application  
Part 5, Emergency Plan**

Jersey state agencies. The response organization for the State of New Jersey is provided as Figure 2-7.

The New Jersey Department of Environmental Protection is the lead agency for New Jersey's assessment of radiological emergencies. The Commissioner of the DEP is the agency head responsible for the response of that organization. The actions taken by DEP are coordinated through and parallel with the actions of the NJSP.

The resources and response organizations of the State of New Jersey are described in the New Jersey Radiological Emergency Response Plan. The development of protective actions is performed as outlined in Figure 2-5 and is discussed in detail in Sections 10 and 11.

**2.2.1     Local Governments**

The County Emergency Management Coordinators for Salem and Cumberland Counties in New Jersey and the County Emergency Preparedness Coordinators for New Castle and Kent Counties in Delaware are the local government representatives who act as the county emergency coordinators. The response organizations for the counties are provided in Figures 2-8 through 2-11.

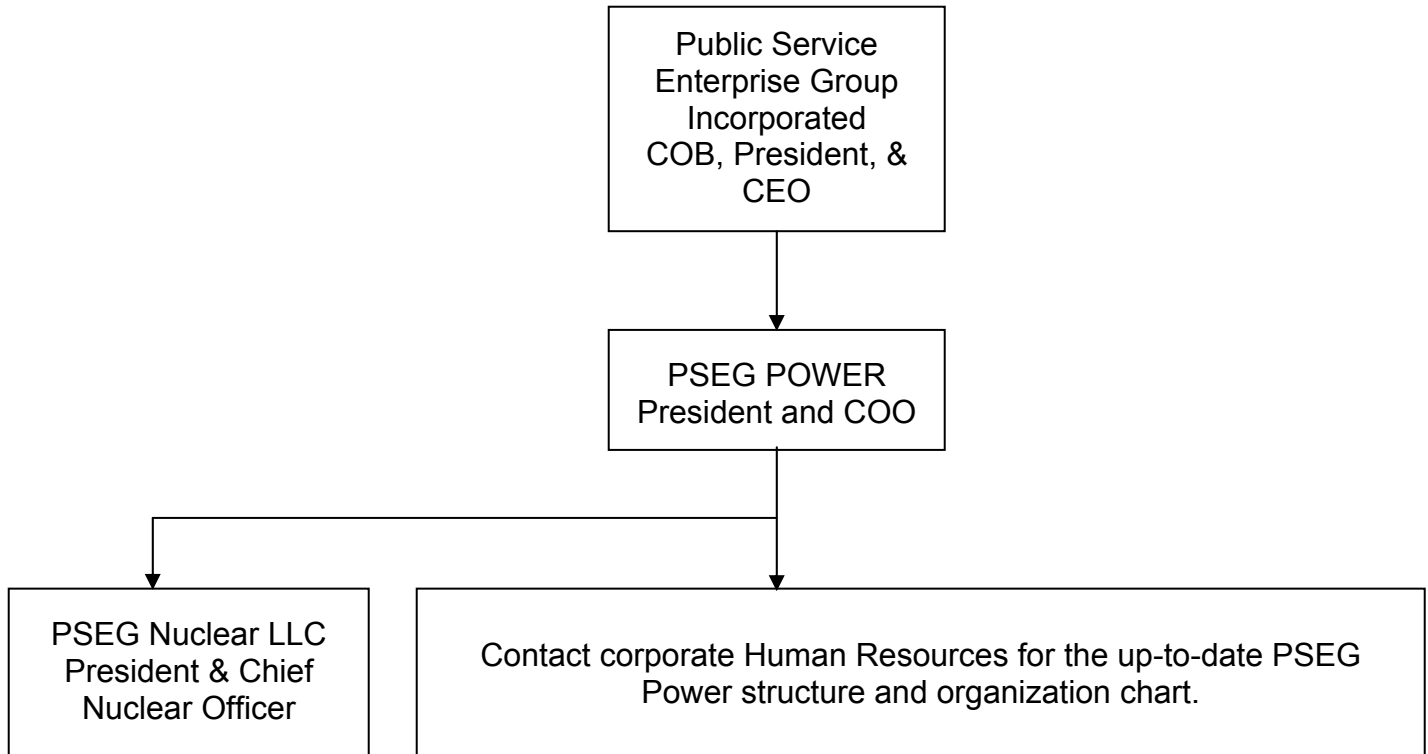
**3.0       Contiguous (Ingestion Pathway) States**

The States of Pennsylvania and Maryland are contiguous (Ingestion pathway) states. The ingestion exposure pathway planning area is shown in Emergency Plan Section 1, Figure 1-4. The State of New Jersey has taken the primary responsibility for notification and communications with the contiguous (ingestion pathway) States of Pennsylvania and Maryland.

The Memoranda of Understanding between the State of New Jersey and the States of Pennsylvania and Maryland are available for review and located in the Emergency Plan attachment volume. Should the accident cause conditions offsite that justify monitoring of the ingestion pathway, PSEG's emergency coordinator function verifies with the States of New Jersey and Delaware that the ingestion pathway is being monitored. Additionally, the individual acting in the emergency coordinator function verifies with the State of New Jersey that the States of Pennsylvania and Maryland have been notified. The State of Delaware also has agreements in force with the States of Maryland and Pennsylvania regarding emergency notifications. The criteria for recommending ingestion pathway monitoring is that radionuclide concentrations in excess of 10CFR20 Appendix B limits could potentially exist or are verified to exist offsite.

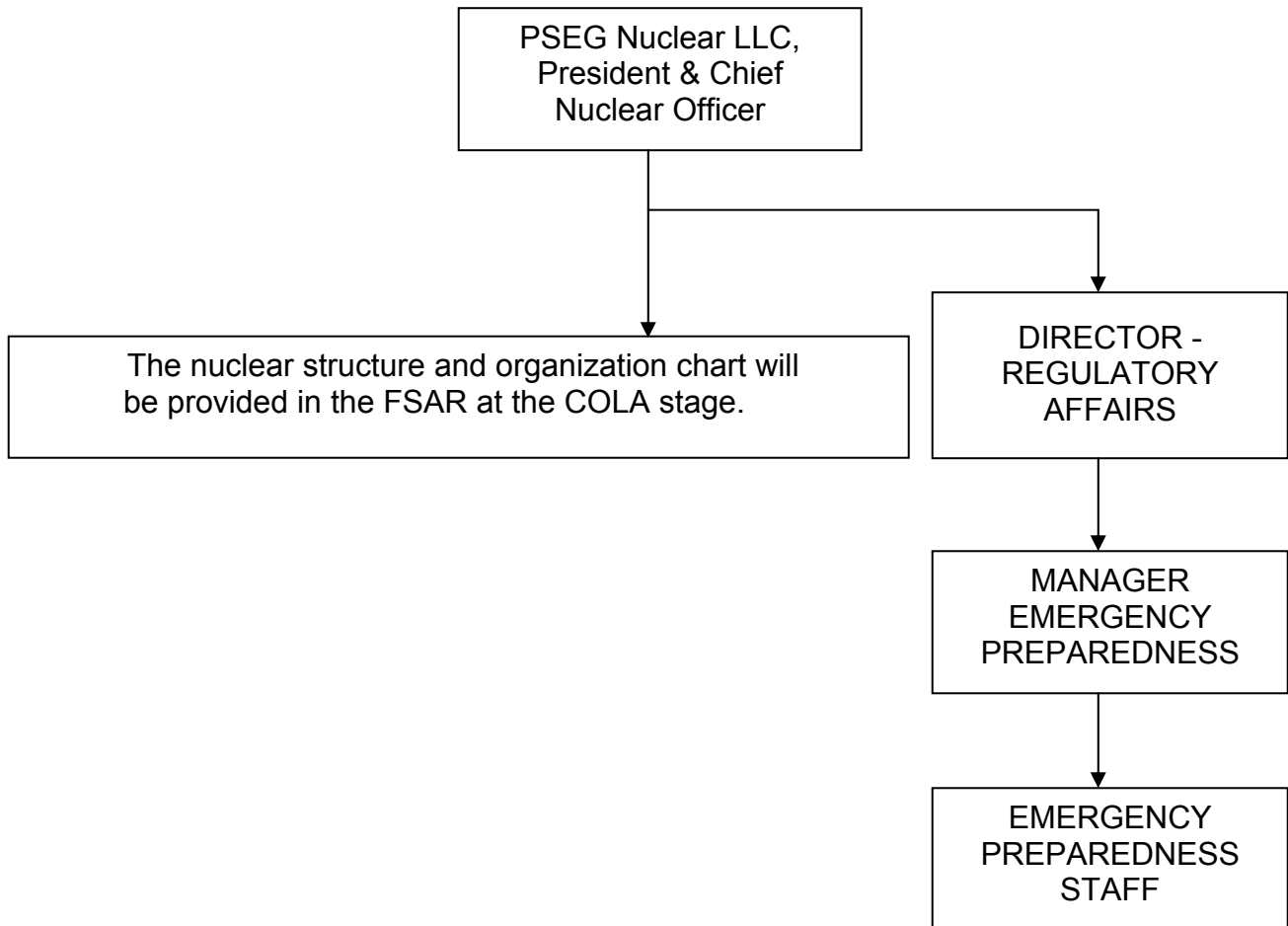
**PSEG Site  
ESP Application  
Part 5, Emergency Plan**

**FIGURE 2-1  
PSEG CORPORATE ORGANIZATION**



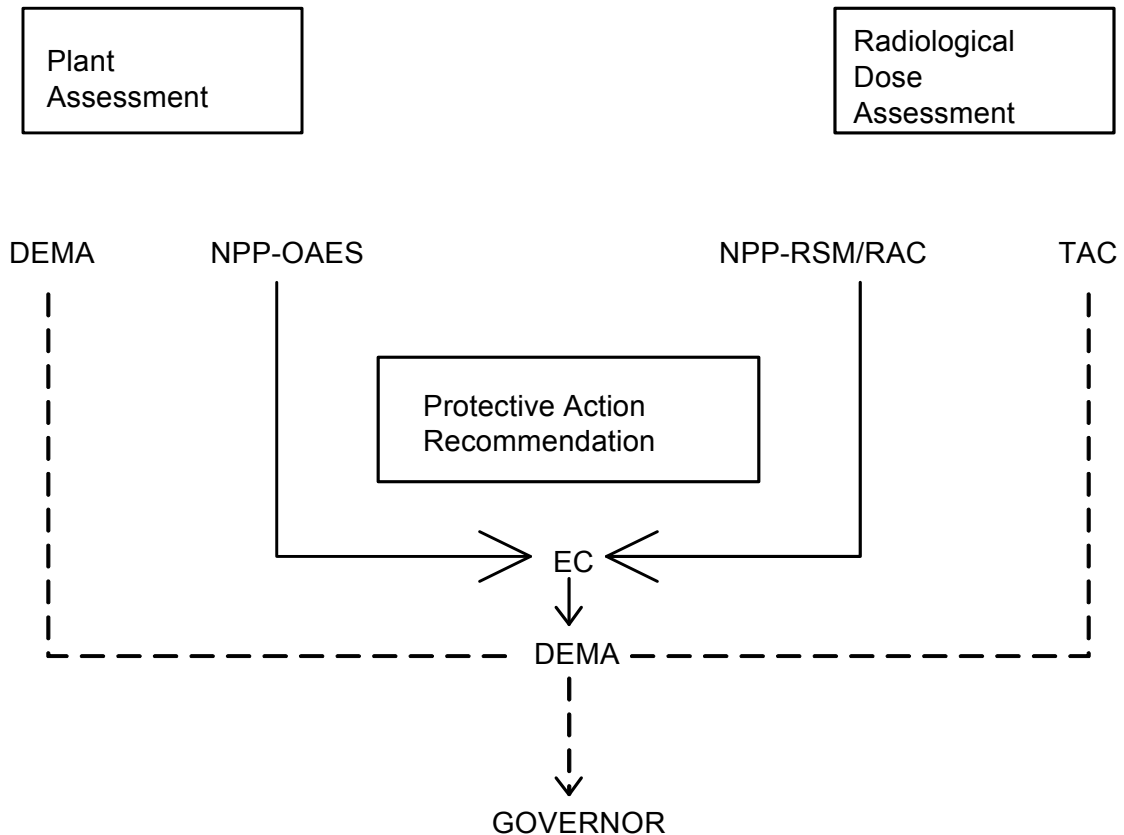
**PSEG Site  
ESP Application  
Part 5, Emergency Plan**

**FIGURE 2-2  
PSEG NUCLEAR ORGANIZATION**



**PSEG Site  
ESP Application  
Part 5, Emergency Plan**

**FIGURE 2-3  
DELAWARE STATE INTERFACE**



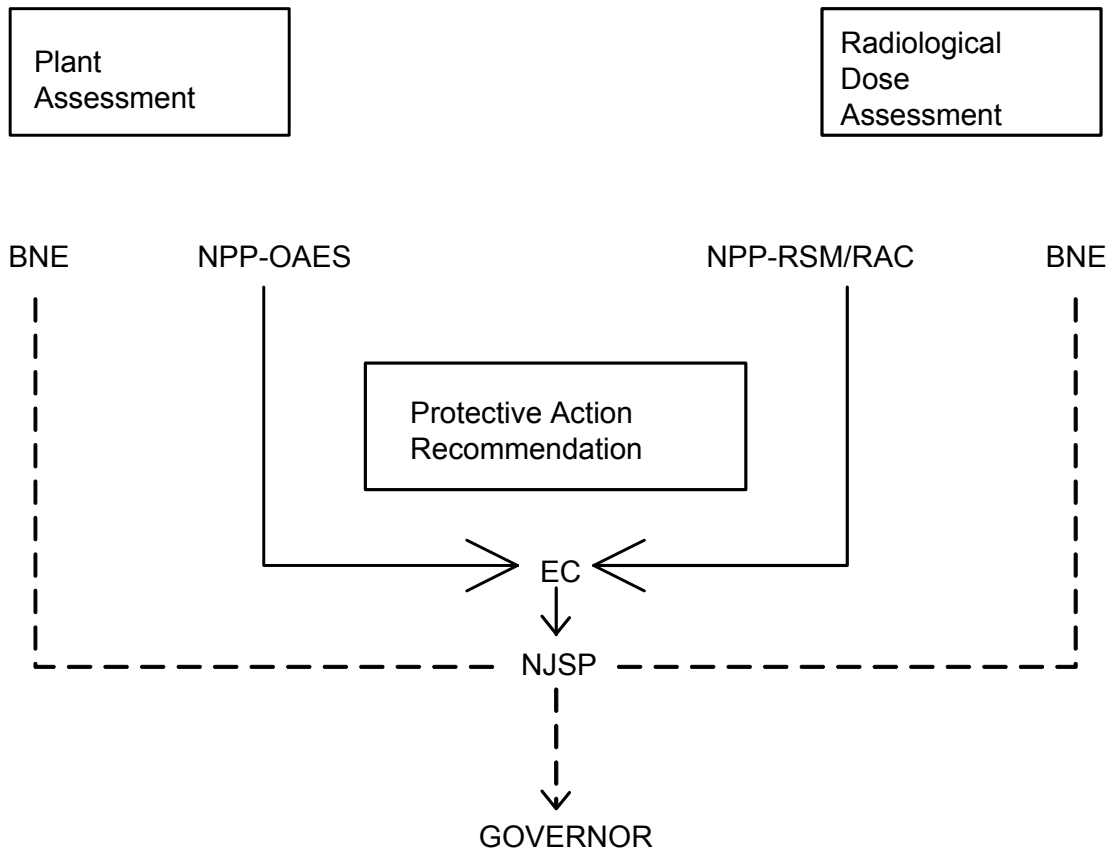
Key to Abbreviations/Symbols

----- state communication  
 \_\_\_\_\_ utility communication

EC Emergency Coordinator (Shift Manager, Emergency Duty Officer, Emergency Response Manager)  
 NPP Nuclear Power Plant (Fixed Nuclear Facility)  
 RAC Radiological Assessment Coordinator  
 RSM Radiological Support Manager  
 OAES Operations Assessment and Engineering Staff  
 TAC Technical Assessment Center, State of Delaware  
 DEMA Delaware Emergency Management Agency, State of Delaware

**PSEG Site  
ESP Application  
Part 5, Emergency Plan**

**FIGURE 2-4  
NEW JERSEY STATE INTERFACE**



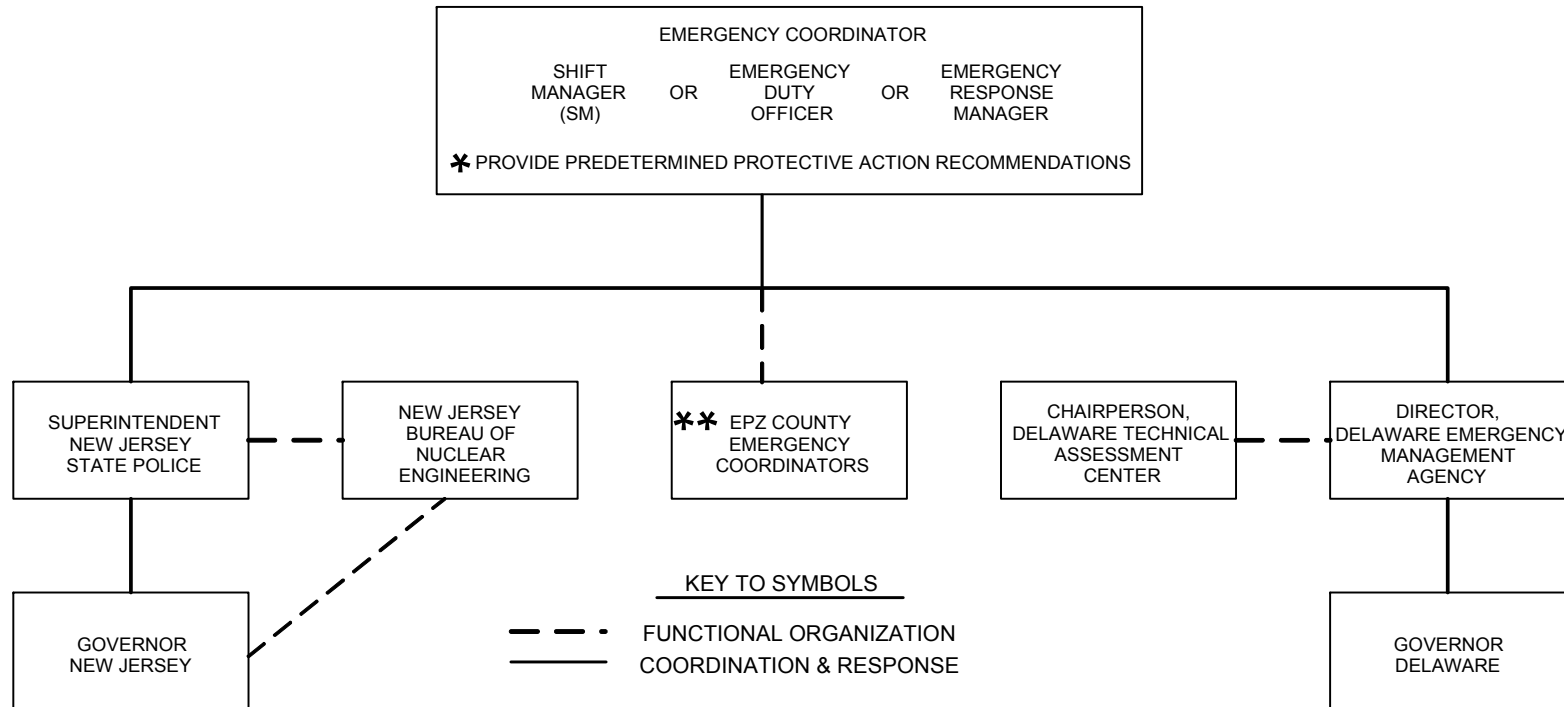
Key to Abbreviations/Symbols

----- state communication  
 \_\_\_\_\_ utility communication

EC      Emergency Coordinator (Shift Manager, Emergency Duty Officer, Emergency Response Manager)  
 NPP    Nuclear Power Plant (Fixed Nuclear Facility)  
 RAC    Radiological Assessment Coordinator  
 RSM    Radiological Support Manager  
 OAES   Operations Assessment and Engineering Staff  
 BNE    New Jersey Bureau of Nuclear Engineering, Department of Environmental Protection  
 NJSP   New Jersey State Police

**PSEG Site  
ESP Application  
Part 5, Emergency Plan**

**FIGURE 2-5  
DECISION CHAIN  
PROTECTIVE ACTIONS  
FOR  
EVENTS CLASSIFIED AS GENERAL EMERGENCY**



\* PREDETERMINED PROTECTIVE ACTION RECOMMENDATIONS ARE DEVELOPED IN ACCORDANCE WITH IE INFORMATION NOTICE 83-28 AND NUREG - 0654, REV. 1. RELEASE ASSESSMENT WILL THEN BE PERFORMED TO ENSURE APPROPRIATE PROTECTIVE ACTIONS HAVE BEEN DEVELOPED.

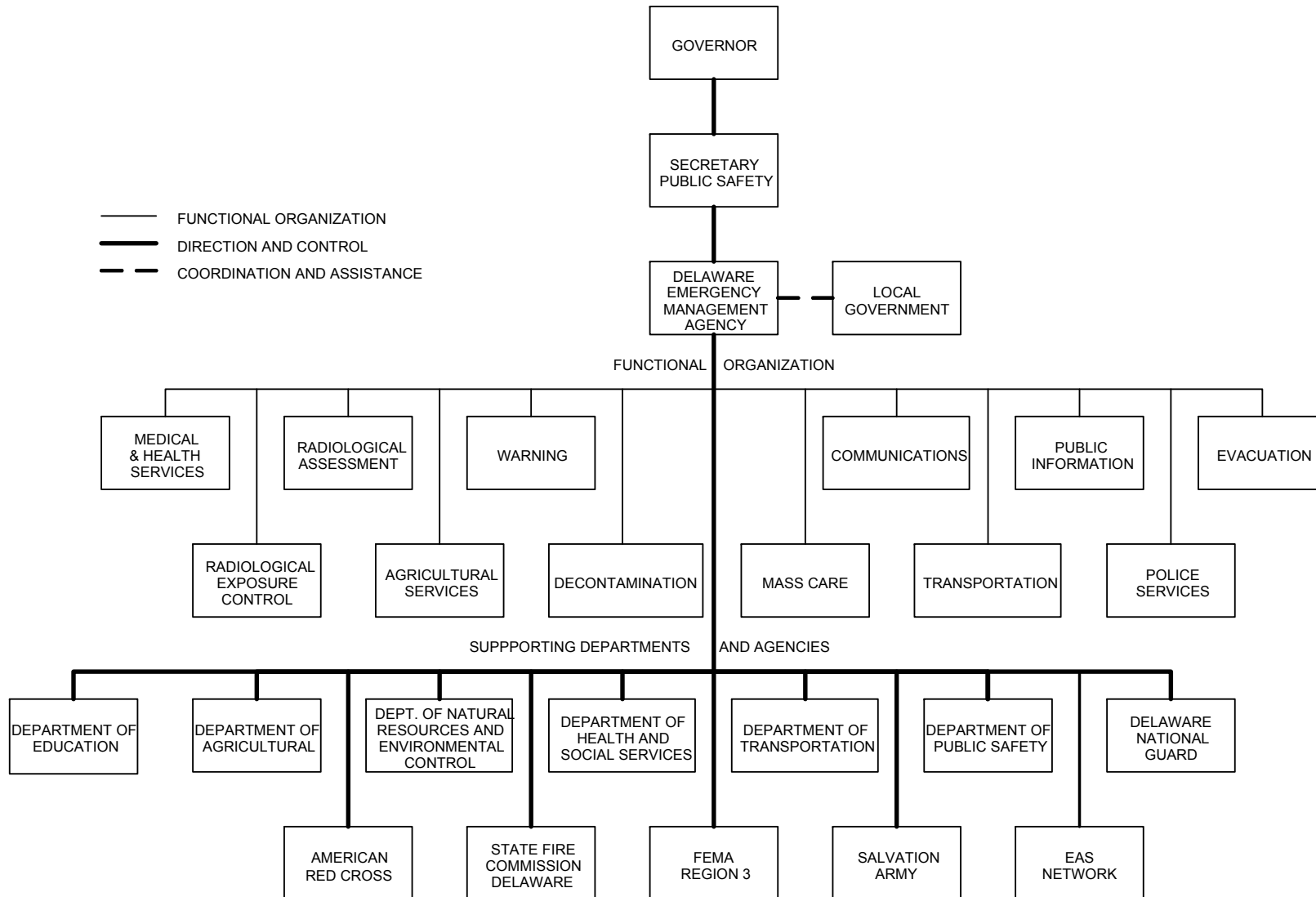
\*\* COUNTY EMERGENCY COORDINATORS ARE SHOWN HERE BECAUSE THEY ARE NOTIFIED DIRECTLY IF THE STATE(S) CANNOT BE CONTACTED AT A GENERAL EMERGENCY.



**PSEG Site  
ESP Application  
Part 5, Emergency Plan**

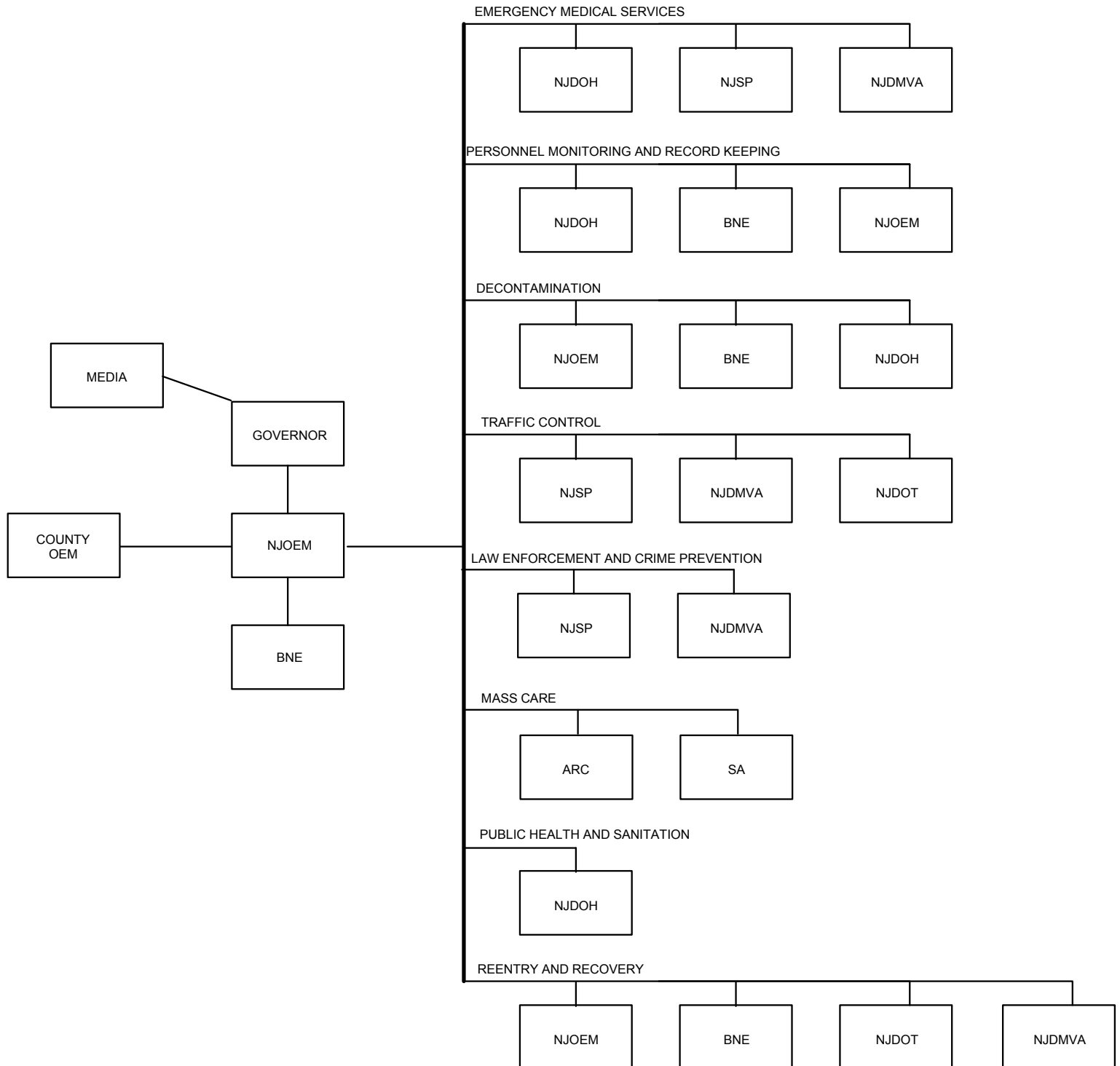
**FIGURE 2-6**

**STATE OF DELAWARE  
RADIOLOGICAL EMERGENCY RESPONSE  
STATE ORGANIZATION**



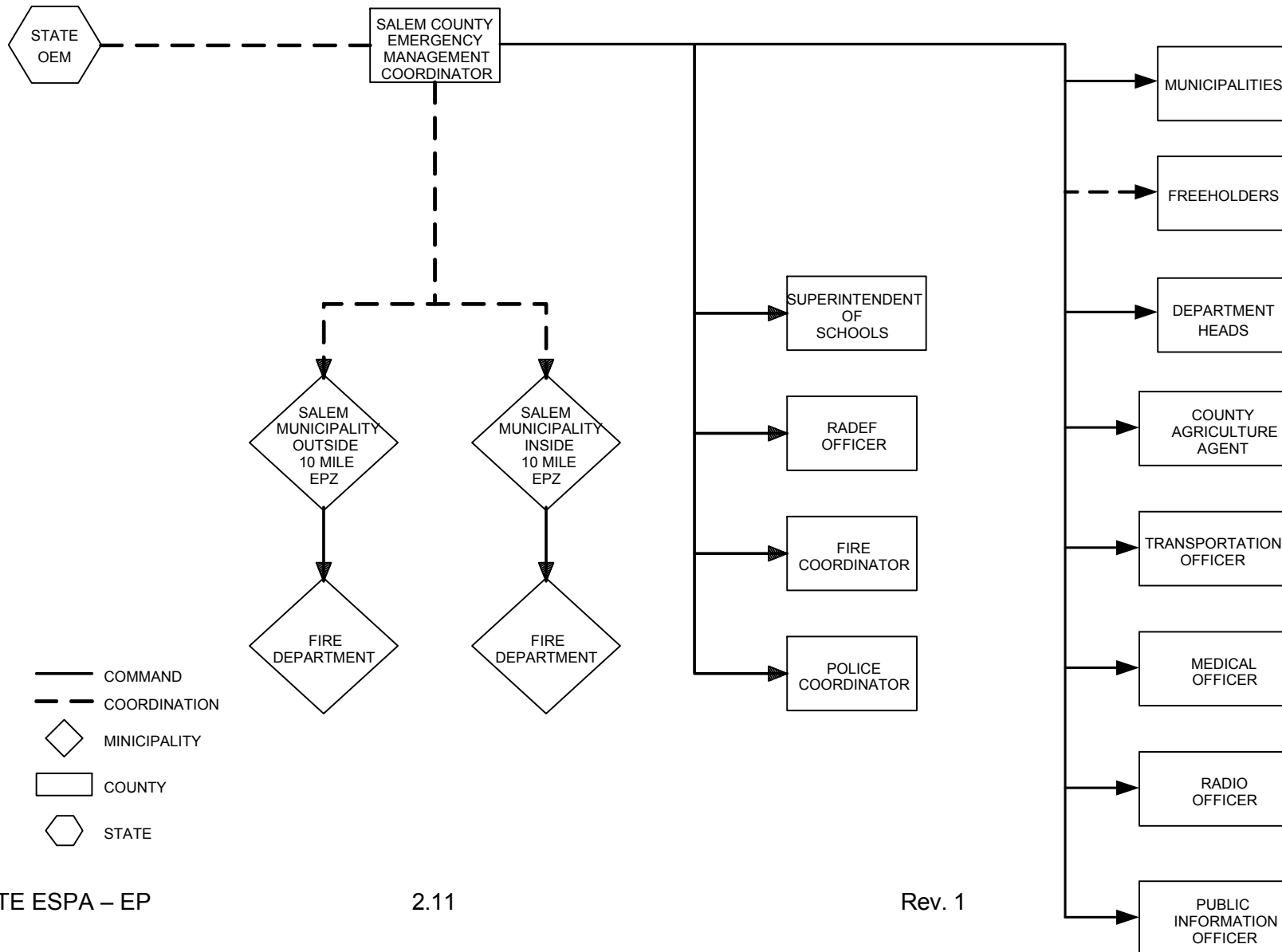
**PSEG Site  
ESP Application  
Part 5, Emergency Plan**

**FIGURE 2-7  
STATE OF NEW JERSEY  
RADIOLOGICAL EMERGENCY RESPONSE  
STATE ORGANIZATION**



**PSEG Site  
ESP Application  
Part 5, Emergency Plan**

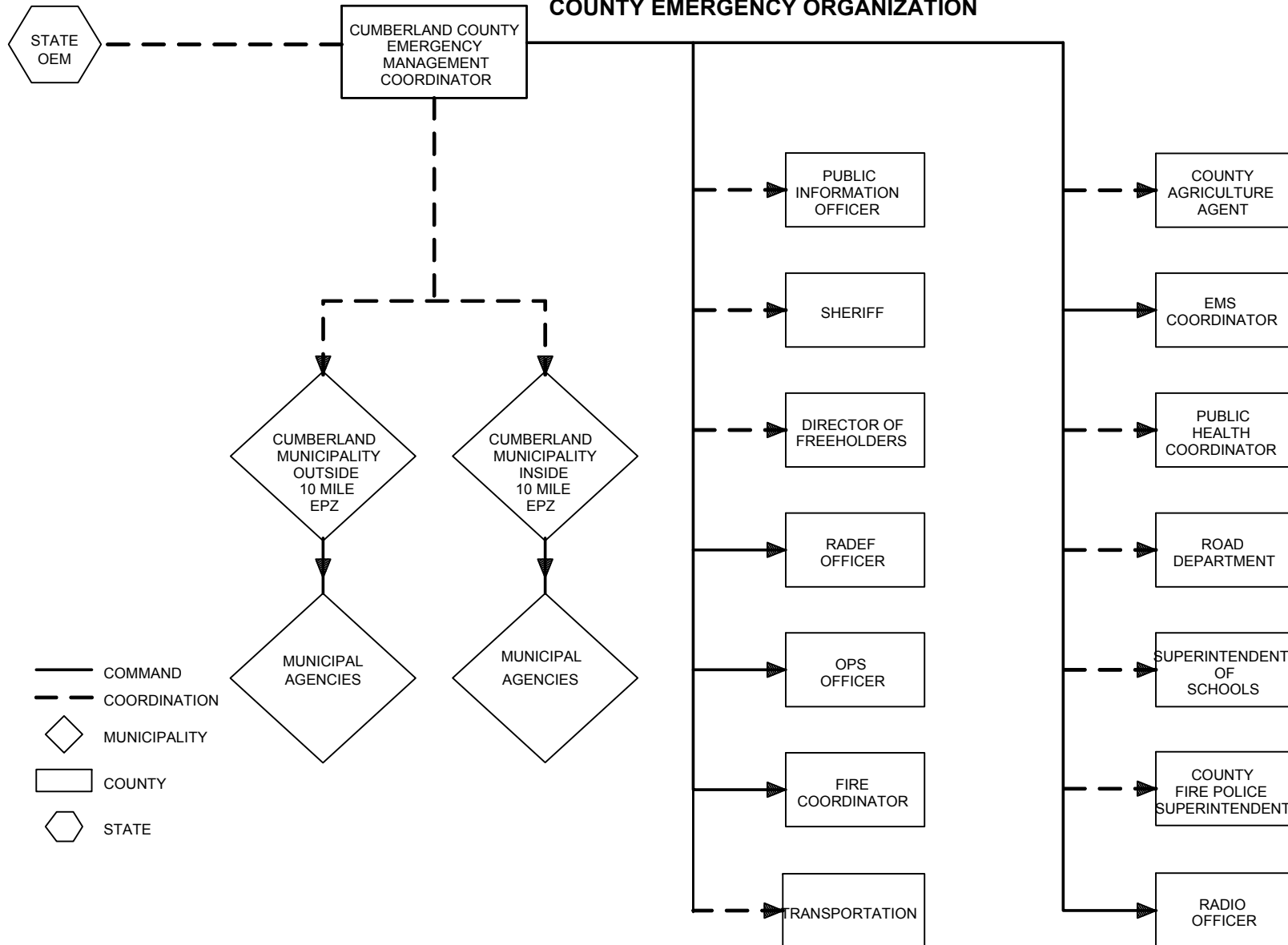
**FIGURE 2-8  
SALEM COUNTY  
COUNTY EMERGENCY ORGANIZATION**



**PSEG Site  
ESP Application  
Part 5, Emergency Plan**

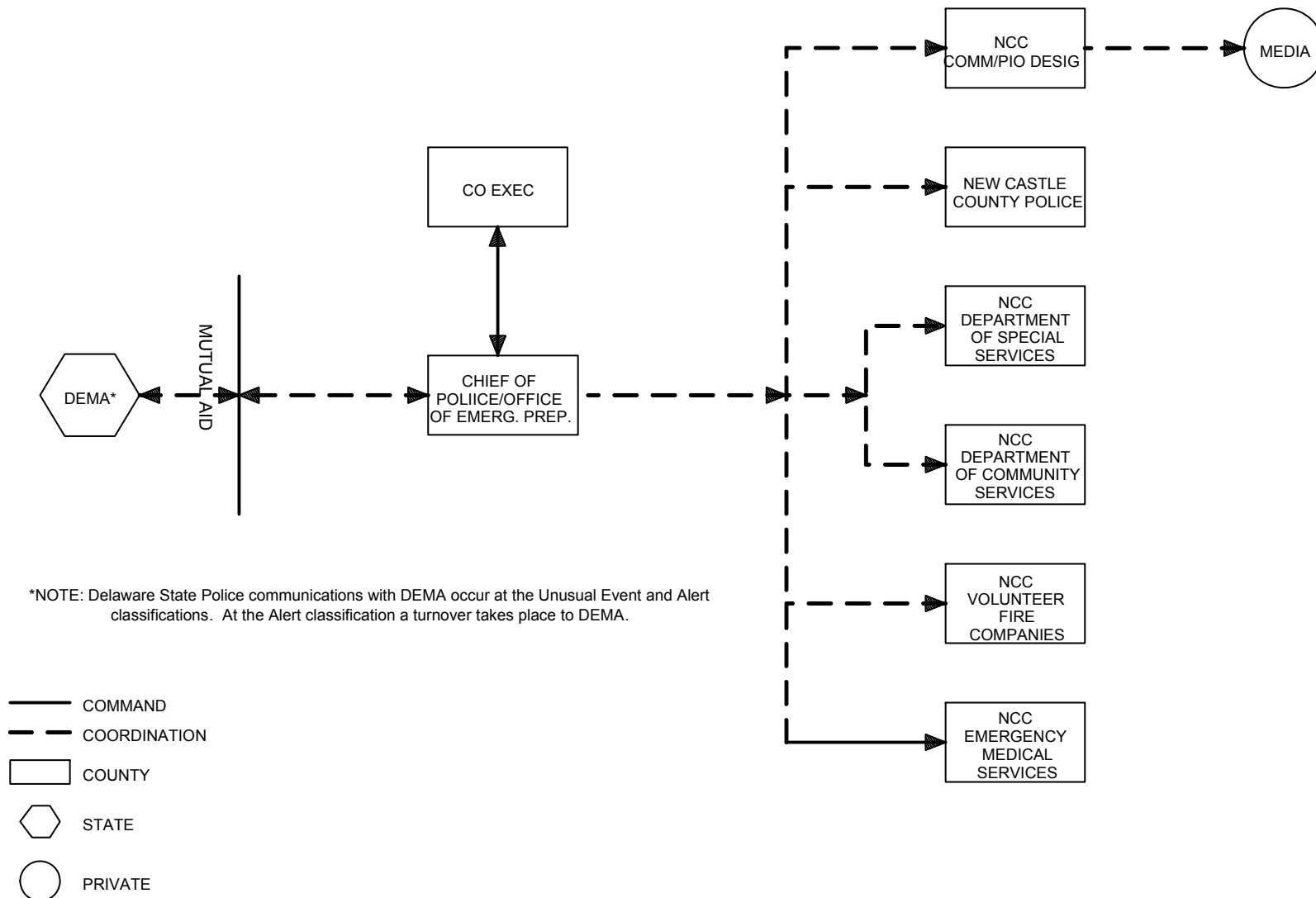
**FIGURE 2-9**

**CUMBERLAND COUNTY  
COUNTY EMERGENCY ORGANIZATION**



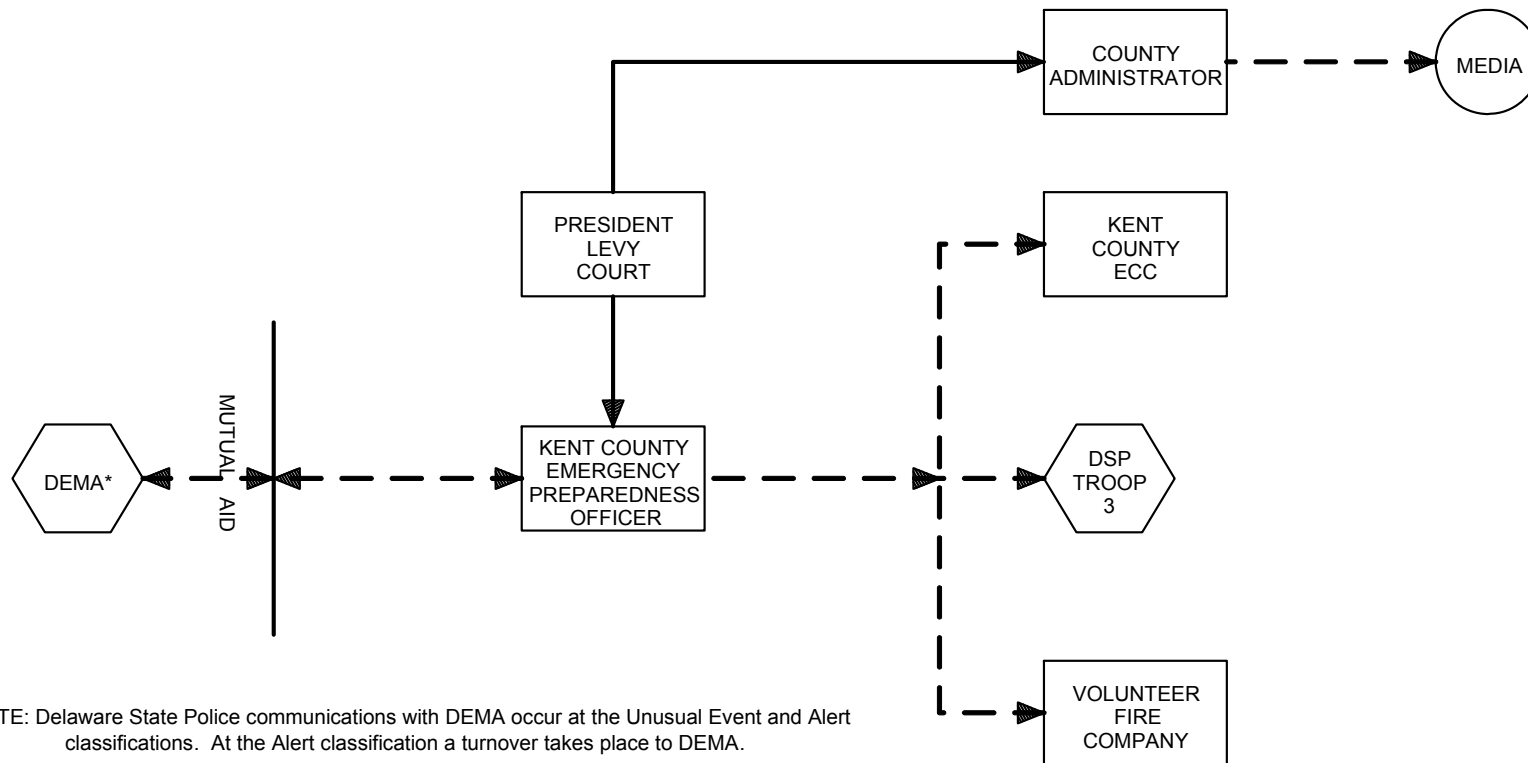
**PSEG Site  
ESP Application  
Part 5, Emergency Plan**

**FIGURE 2-10  
NEW CASTLE COUNTY (NCC)  
COUNTY EMERGENCY ORGANIZATION**



**PSEG Site  
ESP Application  
Part 5, Emergency Plan**

**FIGURE 2-11  
KENT COUNTY  
COUNTY EMERGENCY ORGANIZATION**



\*NOTE: Delaware State Police communications with DEMA occur at the Unusual Event and Alert classifications. At the Alert classification a turnover takes place to DEMA.

