

ERRATA SHEET

TENNESSEE VALLEY AUTHORITY

WATTS BAR RESERVOIR LAND MANAGEMENT PLAN (WBRLMP) LOUDON, MEIGS, RHEA, AND ROANE COUNTIES, TENNESSEE

ENVIRONMENTAL IMPACT STATEMENT

The subject environmental impact statement (EIS) stated that at least six parcels on Watts Bar Reservoir were affected by the December 2008 Kingston ash spill. Impacts to environmental resources and private and public property were being assessed at the time the final EIS was published. The area of these six parcels (Parcels 184, 187, 188, 189, 12-45, and 12-51) totaled about 134 acres above mean summer pool elevation. The continued appropriateness of the current allocation of these affected parcels would be reevaluated through the recovery planning process.

Since the release of the final EIS, Parcel 189a was determined to include several islands (totaling 8 acres) located upstream of the spill site on the Emory River. This location was not impacted by the spill; therefore, these islands should not have been part of the affected area. Furthermore, there are three additional parcels (Parcels 185, 186, and 153) totaling 58.4 acres that were affected by the Kingston ash spill. The total revised area of the parcels impacted by the spill is 184 acres (see Table 1 below). The locations of these parcels are shown in Figure 1 below.

Table 1. Parcels Affected by the Kingston Ash Spill

Parcel	Affected Acreage	Modified Alternatives					
		A		B		C	
		Zone	Acres	Zone	Acres	Zone	Acres
12-45	1.6	6	1.6	6	1.6	6	1.6
12-51	1.2	6	1.2	6	1.2	6	1.2
153	40.6	7	40.6	7	40.6	7	40.6
184	28.8	7	28.8	7	28.8	7	28.8
185	4.1	4	4.1	4	4.1	4	4.1
186	13.7	3	13.7	3	13.7	3	13.7
187	56.8	4	56.8	4	56.8	4	56.8
188	25.3	3	25.3	3	25.3	3	25.3
189a	11.9 ¹	4	22.2 ²	4	19.9	4	19.9
Total	184.0						

¹ Only 11.9 acres of the original Parcel 189 were affected. The remaining acreage is associated with upstream islands, and these will remain as planned under Parcel 189. The affected parcel will be referred to as 189a for future planning.

² Acreage is different for No Action and Action alternatives because 2.3 acres were transferred to Parcel 159 after significant wetlands were identified.

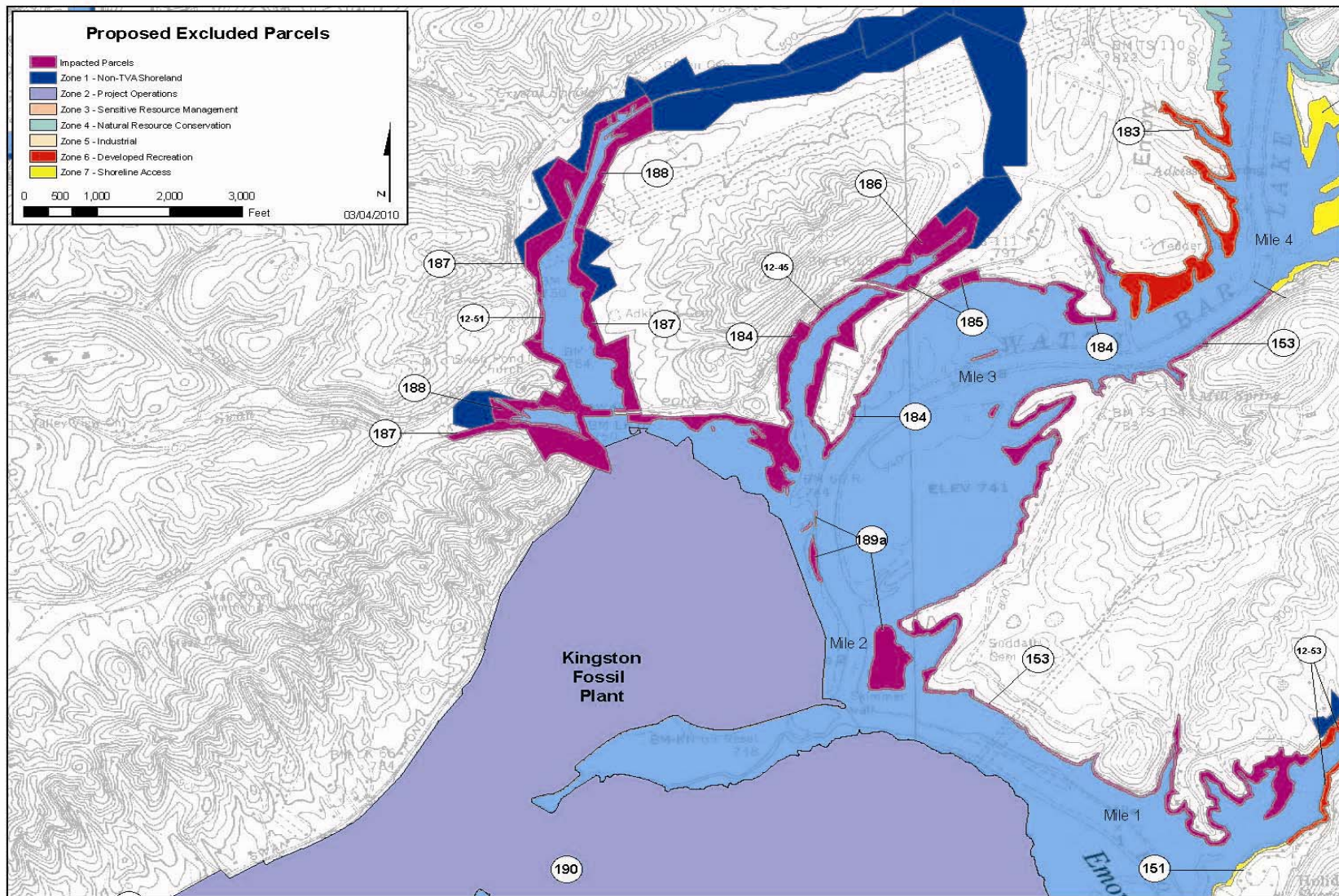


Figure 1. Excluded Parcels Near Kingston Fossil Plant

On November 19, 2009, the TVA Board of Directors approved the 2009 WBRMP, which excluded all or parts of the nine parcels mentioned above that were affected by the December 2008 Kingston ash spill. The appropriate future uses of these parcels will be determined during the recovery planning process. Because of these changes, the total acreage considered in the WBRMP is not 16,220 acres, as reported in the EIS, but rather, 16,036 acres. This change slightly reduces the amount of land available for planning (about 1 percent), but it does not affect the planning process for the vast majority of public lands around Watts Bar Reservoir.

After the release of the final EIS, the TVA Board of Directors clarified its authority regarding future requests for allocation changes of certain shoreline parcels from Zone 5 or 6 to Zone 7. The Board will reserve the right to review and approve such changes. Because the exercise of this allocation authority is an administrative action, it would have no effect on the physical environment, the planning process, or the stated goals of the WBRMP.

Most of the changes necessary to accommodate the 184-acre reduction occur in various tables throughout the document; however, some changes in the document text are necessary. An updated map of the Kingston Fossil Plant area (i.e., Figure 1 in this document) is provided. Table 2 lists the locations in the document where updates are necessary.

Table 2. Errata for Watts Bar Reservoir Land Management Plan EIS

Page	Paragraph	Line	Delete:	Replace with or Add:
Cover Sheet	Abstract: First	2	"a total of 16,220 acres"	"a total of 16,036 acres"
S-1	Second	4	"approximately 16,220 acres"	"approximately 16,036 acres"
S-3	Second	2	"about 16,220 acres"	"about 16,036 acres"
1	Fourth	3	"about 16,220 acres"	"about 16,036 acres"
3	First	5	"about 16,220 acres"	"about 16,036 acres"
3	Third	2	"approximately 16,220 acres"	"approximately 16,036 acres"
5	Second	All	Original Paragraph	Replacement Paragraph 1
5	Third	All	Original Paragraph	Replacement Paragraph 2
30	Second	All	"without any further TVA Board approval"	"with TVA Board approval"
31	First	2	"1,552 acres"	"1,549 acres"
32	Table 2.1-3	Row 46 Col. 4	"19.9"	"9.0"
32	Table 2.1-3	Row 46 Col. 7	"Decrease in Acreage"	"Decrease Acreage to Create Parcel 189a"
33	First	4	"about 8,900 acres"	"about 8,800 acres"
33	Sixth	7	"nearly 2,400 acres"	"nearly 2,200 acres"
34	First	4	"3,472 acres of land"	"3,433 acres of land"
34	First	5	"3,309 acres"	"3,236 acres"
34	First	7	"1,998 acres"	"1,995 acres"
34	Second	8	"3,780 acres of land"	"3,741 acres of land"
34	Second	9	"3,857 acres"	"3,784 acres"
34	Second	13	"1,552 acres"	"1,549 acres"
34	Fourth	1	"2,300 acres"	"2,200 acres"
34	Fourth	3	"approximately 1,400 to 1,500 acres"	"approximately 1,200 to 2,100 acres"
35	Table 2.2-1	All	Original Table 2.2-1	Revised Table 2.2-1
36	Table 2.2-2	All	Original Table 2.2-2	Revised Table 2.2-2
72	Fifth	1	"manages 16,220 acres"	"manages 16,036 acres"
78	Fourth	5	"approximately 16,220 acres"	"approximately 16,036 acres"
79	Second	14	"within the 16,220 acres"	"within the 16,036 acres"

Page	Paragraph	Line	Delete:	Replace with or Add:
97	First	6	"Approximately 14 percent (2,303 acres)"	"Approximately 14 percent (2,241 acres)"
100	Third	2	"31 percent (5,098 acres)"	"31 percent (5,025 acres)"
103	Second	4	"42 percent (6,800 acres)"	"42 percent (6,700 acres)"
103	Fourth	1	"53 percent (8,600 acres)"	"53 percent (8,500 acres)"
103	Fourth	4	"47 percent (7,600 acres)"	"47 percent (7,500 acres)"
104	Second	2	"55 percent (8,900 acres)"	"55 percent (8,800 acres)"
105	Sixth	2	"management of 16,220 acres"	"management of 16,036 acres"
105	Sixth	3	"land (9.5 percent) for Zone 5"	"land (9.6 percent) for Zone 5"
111	Second	3	"Six thousand seven hundred eighty-one acres or 42.1 percent"	"Six thousand six hundred sixty-nine acres or 41.6 percent"
111	Fourth	5	"7,637 acres, or 47 percent"	"7,525 acres, or 47 percent"
112	First	1	"8,878 acres, or 55 percent"	"8,766 acres, or 55 percent"
118	Fourth	2	"developed recreation (1,998 acres)"	"developed recreation (1,995 acres)"
118	Sixth	2	"3,857 acres"	"3,784 acres"
118	Sixth	3	"1,552 acres"	"1,549 acres"
119	Second	6	"5,098 acres"	"5,025 acres"
119	Second	13	"1,351 acres"	"1,348 acres"
122	Table 4.8-3	All	Original Table 4.8-3	Revised Table 4.8-3
123	Second	4	"1,687 acres"	"1,633 acres"
124	Fourth	5	"about 381"	"about 446"
124	Fourth	6	"about 446 acres"	"about 548 acres"
127	Fourth	2	"367 acres"	"357 acres"
129	Second	4	"1,998 acres or 12 percent"	"1,995 acres or 12 percent"
129	Second	5	"1,552 acres"	"1,549 acres"
129	Second	7	"1,351 acres"	"1,348 acres"
130	First	2	"1,998 acres, 1,552 acres, and 1,351 acres"	"1,995 acres, 1,549 acres, and 1,348 acres"
130	First	4	"3,309 acres, 3,857 acres, 5,098 acres"	"3,236 acres, 3,784 acres, 5,025 acres"
131	Table 4.11-1	All	Original Table 4.11-1	Revised Table 4.11-1
132	First	1	"3,309 acres"	"3,236 acres"
133	First	2	"557 acres more"	"548 acres more"
133	Sixth	2	"5,098 acres"	"5,025 acres"
136	Three	3	"450 fewer acres"	"1,187 fewer acres"
136	Three	4	"1,545 acres compared to 1,072 acres"	"1,544 acres compared to 357 acres"
136	Sixth	1-2	"5,098 acres, as opposed to 3,857 under Modified Alternative B and 3,309"	"5,025 acres, as opposed to 3,784 under Modified Alternative B and 3,236"
136	Sixth	4	"3,780 acres under Modified Alternatives B and C, and 3,472 acres"	"3,741 acres under Modified Alternatives B and C, and 3,433 acres"
137	Fifth	2	"1,998 acres"	"1,995 acres"
137	Fifth	5	"About 6,772 acres"	"About 6,669 acres"
138	Sixth	4	"over 52 percent"	"over 55 percent"
181	Table B-1, Parcel 12-45	Row 2, Col. 9	"Affected by the December 2009 ash pond spill at KIF."	"Affected by the December 2009 ash pond spill at KIF, not part of WBRLMP."
182	Table B-1, Parcel 12-51	Row 1, Col. 9	"Affected by the December 2009 ash pond spill at KIF."	"Affected by the December 2009 ash pond spill at KIF, not part of WBRLMP."
207	Table B-1, Parcel 153	Row 1, Col. 9		Add "Affected by the December 2009 ash pond spill at KIF, not part of WBRLMP."

Page	Paragraph	Line	Delete:	Replace with or Add:
211	Table B-1, Parcel 184	Row 8, Col. 9	"Affected by the December 2009 ash pond spill at KIF."	"Affected by the December 2009 ash pond spill at KIF, not part of WBRLMP."
212	Table B-1, Parcel 185	Row 2, Col. 9		Add "Affected by the December 2009 ash pond spill at KIF, not part of WBRLMP."
212	Table B-1, Parcel 186	Row 3, Col. 9		Add "Affected by the December 2009 ash pond spill at KIF, not part of WBRLMP."
212	Table B-1, Parcel 187	Row 4, Col. 9	"Affected by the December 2009 ash pond spill at KIF."	"Affected by the December 2009 ash pond spill at KIF, not part of WBRLMP."
212	Table B-1, Parcel 188	Row 5, Col. 9	"Affected by the December 2009 ash pond spill at KIF."	"Affected by the December 2009 ash pond spill at KIF, not part of WBRLMP."
213	Table B-1, Parcel 189	Row 2, Col. 9	"Affected by the December 2009 ash pond spill at KIF."	"Affected by the December 2009 ash pond spill at KIF, not part of WBRLMP."
213	Table B-1	After Row 2		Add row for Parcel 189a as in revised Table B-1

Please replace the second paragraph on page 5 with the paragraph below.

Replacement Paragraph 1

All or parts of at least nine parcels (other than KIF) proposed for consideration in the Land Plan action alternatives were impacted directly by the spill. The area of these parcels total about 184.0 acres above mean summer pool elevation. Parcels 186 and 188, which total 39.0 acres, were proposed for allocation to Zone 3 (Sensitive Resource Management) because of the presence of wetlands. Parcels 185, 187, and 189a, totaling 83.1 acres, were proposed for Zone 4 (Natural Resource Conservation). The 69.2 acres of Parcels 153 and 184 were proposed for Zone 7 (Shoreline Access). Parcels 12-45 and 12-51 (about 2.8 acres) are currently licensed to the Tennessee Wildlife Resources Agency (TWRA) for boat access ramps and are proposed for Zone 6 (Developed Recreation). In addition, the approximately 84-acre containment pond, which includes 60 acres from which the ash slide occurred, is part of the KIF site (Parcel 190), which is proposed to be allocated to Zone 2 (Project Operations).

Please replace the third paragraph on page 5 with the paragraph below.

Replacement Paragraph 2

In January 2009, TVA began developing a recovery plan that would address remediation of the area affected by the ash spill, including any areas within the above parcels that have been impacted. The appropriate future uses of these nine parcels will be determined during the recovery planning process. Since the vast majority of land parcels on Watts Bar Reservoir are unaffected by the spill, TVA has decided to exclude these parcels from the WBRLMP and to move ahead with the land planning process for this reservoir. Any future TVA actions to reallocate any of these parcels will be subject to environmental reviews under NEPA.

Please replace Table 2-1 on page 35 with the revised table below. Revised information is shown in the dark grey boxes.

Table 2.2-1. Comparison of Land Uses by Alternatives (Revised)

Existing (1988) Allocation Categories	Current Land Use Zones	Modified Alternatives					
		A		B		C	
		Acres	%	Acres	%	Acres	%
Retained Developed ¹ Previously Unplanned ²	Zone 2 - Project Operations	3,587	22.4	4,371	27.3	3,611	22.5
Historic Preservation, Habitat Protection, Visual Management and Protection, Small Wild Areas	Zone 3 - Sensitive Resource Management	3,433	21.4	3,741	23.3	3,741	23.3
Wildlife Management Forest Management Agriculture, Open Space, Right-of-Way Protection	Zone 4 - Natural Resource Conservation	3,236	20.2	3,784	23.6	5,025	31.4
Industrial Sites, Barge Terminal Sites, Minor Landings, Fleeting Area, Industrial Access	Zone 5 - Industrial	1,544	9.6	357	2.2	77	0.5
Public Recreation, Commercial Recreation Water Access, Informal Recreation	Zone 6 - Developed Recreation	1,995	12.4	1,549	9.7	1,348	8.4
Previously Unplanned ³	Zone 7 - Shoreline Access	2,241	14.0	2,234	13.9	2,234	13.9
Total		16,036	100.0	16,036	100.0	16,036	100.0

¹ Retained development - A TWRA maintenance area (9 acres) and Kingston Pumping Station (16 acres) are the only inclusions from the 1988 Plan.

² Primarily consists of TVA project lands from dam and electric power plant reservations.

³ Consists of TVA lands described as marginal strip in the 1988 Plan.

Please replace Table 2.2-2 on page 36 with the revised table below. Revised information is shown in the dark grey boxes.

Table 2.2-2. Comparison of Acres Allocated to Sensitive and Natural Resource Uses (Revised)

Modified Alternative	Allocation	Acres	Percent of Total Area
Alternative A	Historic Preservation, Habitat Protection, Visual Management and Protection, Small Wild Areas, Wildlife Management, Forest Management, Agriculture, Open Space, Right-of-Way Protection	6,669	41.6
Modified Alternative B	Zone 3 – Sensitive Resource Management Zone 4 – Natural Resource Conservation	7,525	46.9
Modified Alternative C	Zone 3 – Sensitive Resource Management Zone 4 – Natural Resource Conservation	8,766	54.7

Please replace Table 4.8-3 on page 122 with the revised table below. Revised information is shown in the dark grey boxes.

Table 4.8-3. Prime Farmland Acreage Potentially Affected Under Each Alternative (Revised)

Zone	Modified Alternative A			Modified Alternative B			Modified Alternative C		
	Prime Farmland (Acres)	Total Zone Allocation (Acres)	Percent of Zone	Prime Farmland (Acres)	Total Zone Allocation (Acres)	Percent of Zone	Prime Farmland (Acres)	Total Zone Allocation (Acres)	Percent of Zone
2	234	3587	6.5	262	4371	6.0	244	3611	6.8
3	878	3433	25.6	889	3741	23.8	889	3741	23.8
4	590	3236	18.2	670	3784	17.7	744	5025	14.8
5	139	1544	9.0	66	357	18.5	32	77	41.6
6	278	1995	13.9	233	1549	15.0	211	1348	15.7
7	677	2241	30.2	676	2234	30.3	676	2234	30.3
Total	2796	16036	17.4	2796	16036	17.4	2796	16036	17.4

Please replace Table 4.11-1 on page 131 with the revised table below. Revised information is shown in the dark grey boxes.

Table 4.11-1. Acres of Developed and Dispersed Recreation on Watts Bar Reservoir (Revised)

Existing (1988) Allocation Categories	Current Land Use Zones	Modified Alternatives					
		A		B		C	
		Acres	%*	Acres	%	Acres	%
Wildlife Management Forest Management Agriculture, Informal Recreation, Open Space, Right-of-Way Protection	Zone 4 - Natural Resource Conservation	3,236	20.2	3,784	23.6	5,025	31.4
Public Recreation, Commercial Recreation, Water Access	Zone 6 - Recreation	1,995	12.4	1,549	9.7	1,348	8.4
Total		5,231	32.6	5,333	33.3	6,373	39.8

* Percent of total TVA Land on Watts Bar Reservoir

Please replace information after row 2 in Table B-1 on page 213 with the revised table below. Revised information is shown in the dark grey boxes.

Table B-1 (Revised)

Parcel	Original Parcel Number (1988 Plan)	Committed (C)/ Uncommitted (U)	Acreage Alternative A	Alternative A (No Action)	Alternatives B/C Acres	Alternative B (Preferred)	Alternative C	Brief Description of Allocated Parcels
189	182	U	22.2	4	9.0	4	4	Includes all Zone 4 islands in the Emory River embayment upstream from Kingston Fossil Plant and contains bottomland hardwoods and shoreline fringe wetlands of significant importance to various wading/water bird species; duck and goose hunting from blinds occurs on some of these areas.
189a	182	U	22.2	4	11.9	4	4	Includes a peninsula and islands in the Emory River near Kingston Fossil Plant and contains bottomland hardwoods and shoreline fringe wetlands of significant importance to various wading/water bird species; duck and goose hunting from blinds occurs on some of these areas. Affected by the December 2009 ash pond spill at KIF, not part of WBRLMP.