



Nuclear Regulatory Commission
Exhibit # - BRD001-00-BD01
Docket # - 05200029 | 05200030
Identified : 03/07/2012

Admitted: 03/07/2012

Withdrawn:

Rejected:

Stricken:

Attachment A

Levy Nuclear Project

Site Tour

January 11, 2012

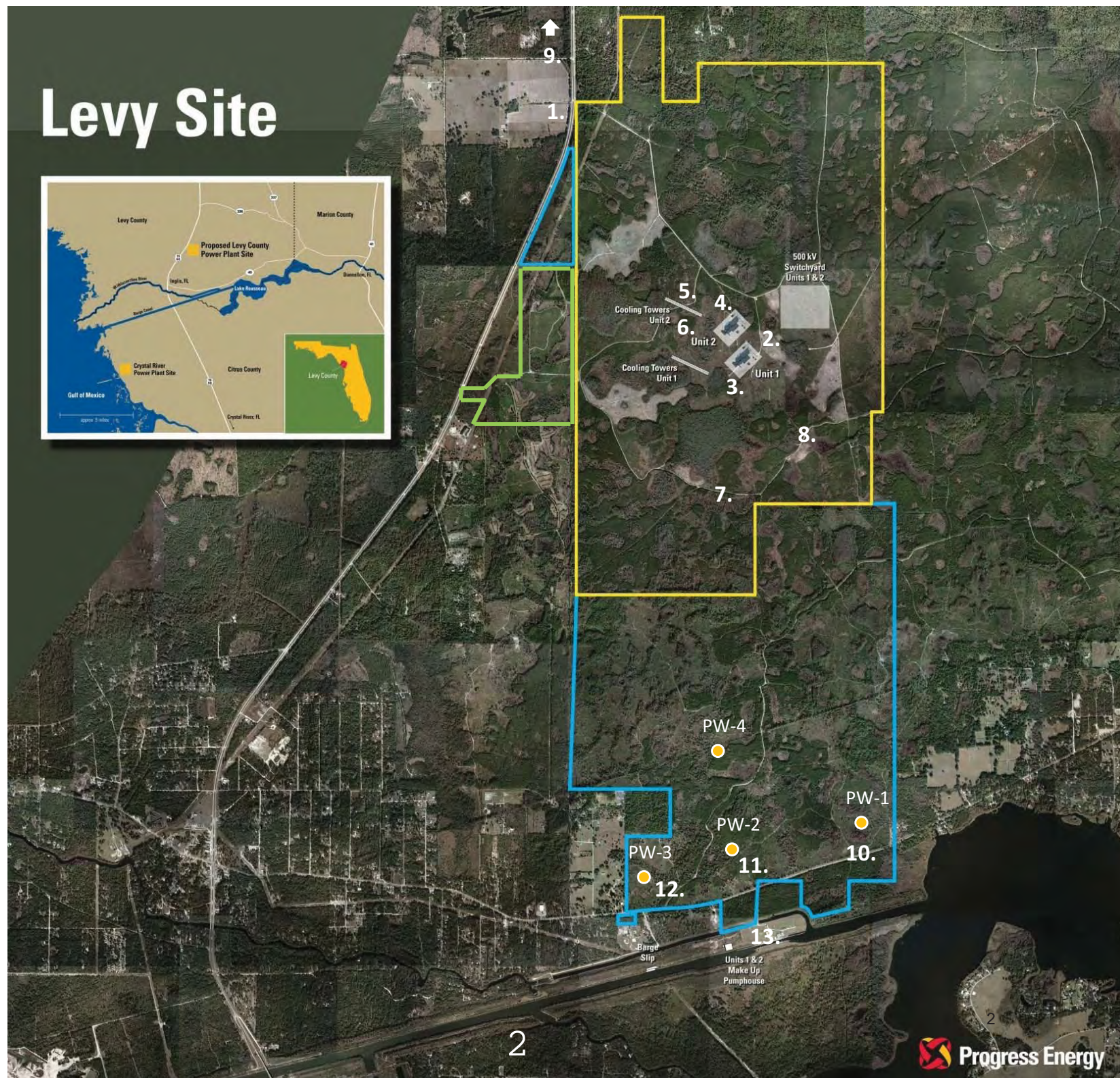


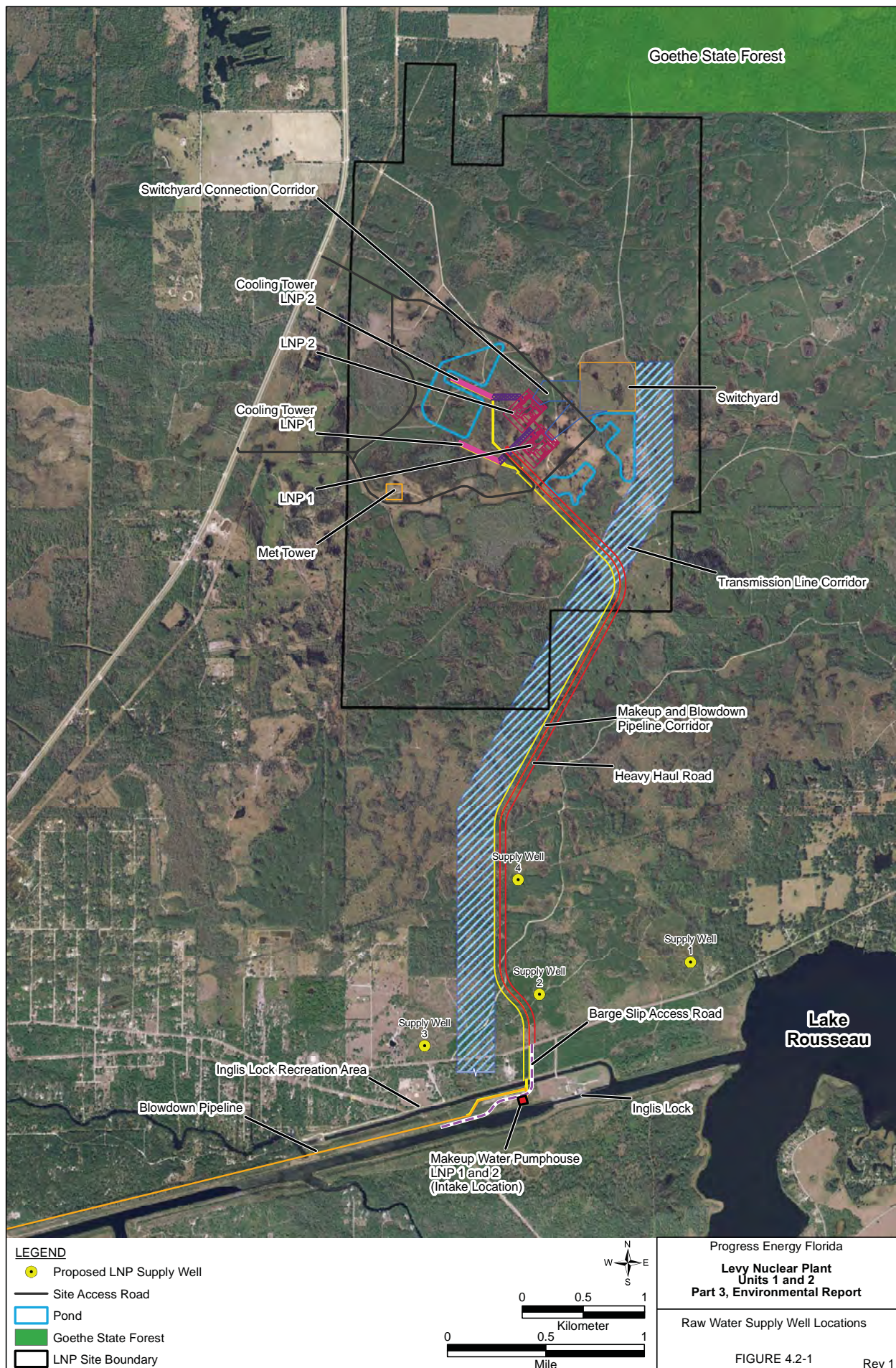
BRD001
03/07/12

Site Tour Itinerary:

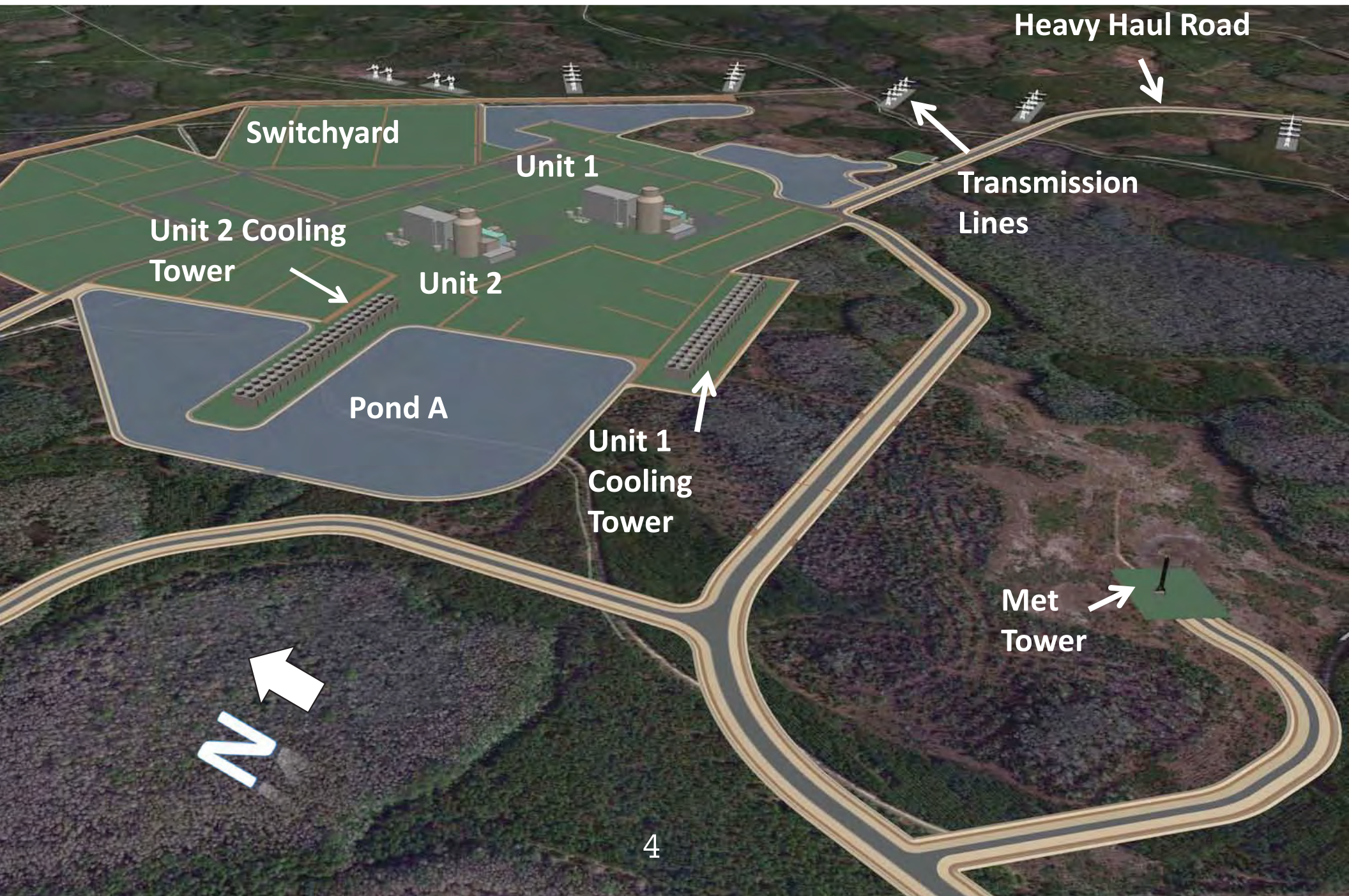
1. Enter property from Hwy 19
2. Stop in vicinity of Switchyard and Ponds B & C
3. Unit 1 Site
4. Unit 2 Site
5. Unit 2 Cooling Tower Site
6. Pond A
7. Typical Wetland
8. Transmission Right of Way
9. Caruth Youth Camp
Little King Springs
Rest Stop
10. Production Well #1
11. Production Well #2
(near wildfire site)
12. Production Well #3
13. Water Intake on CFBC

Levy Site





Site Layout



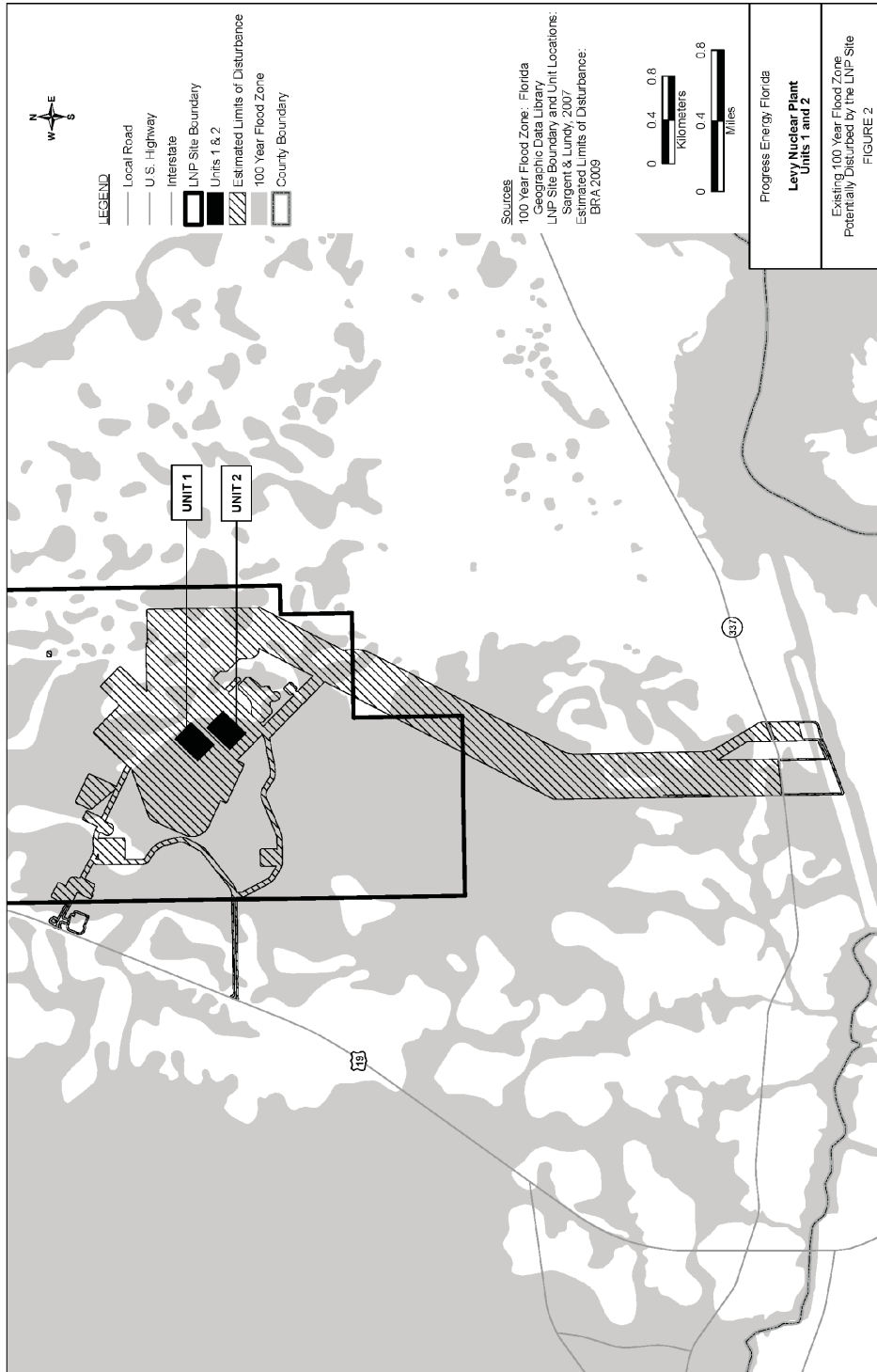


Figure 2-11. LNP Units 1 and 2 Footprint, the 100-Year Flood Plain, and the Estimated Area to be Disturbed During Construction (PEF 2009d)

LNP Site Investigation Boreholes

