

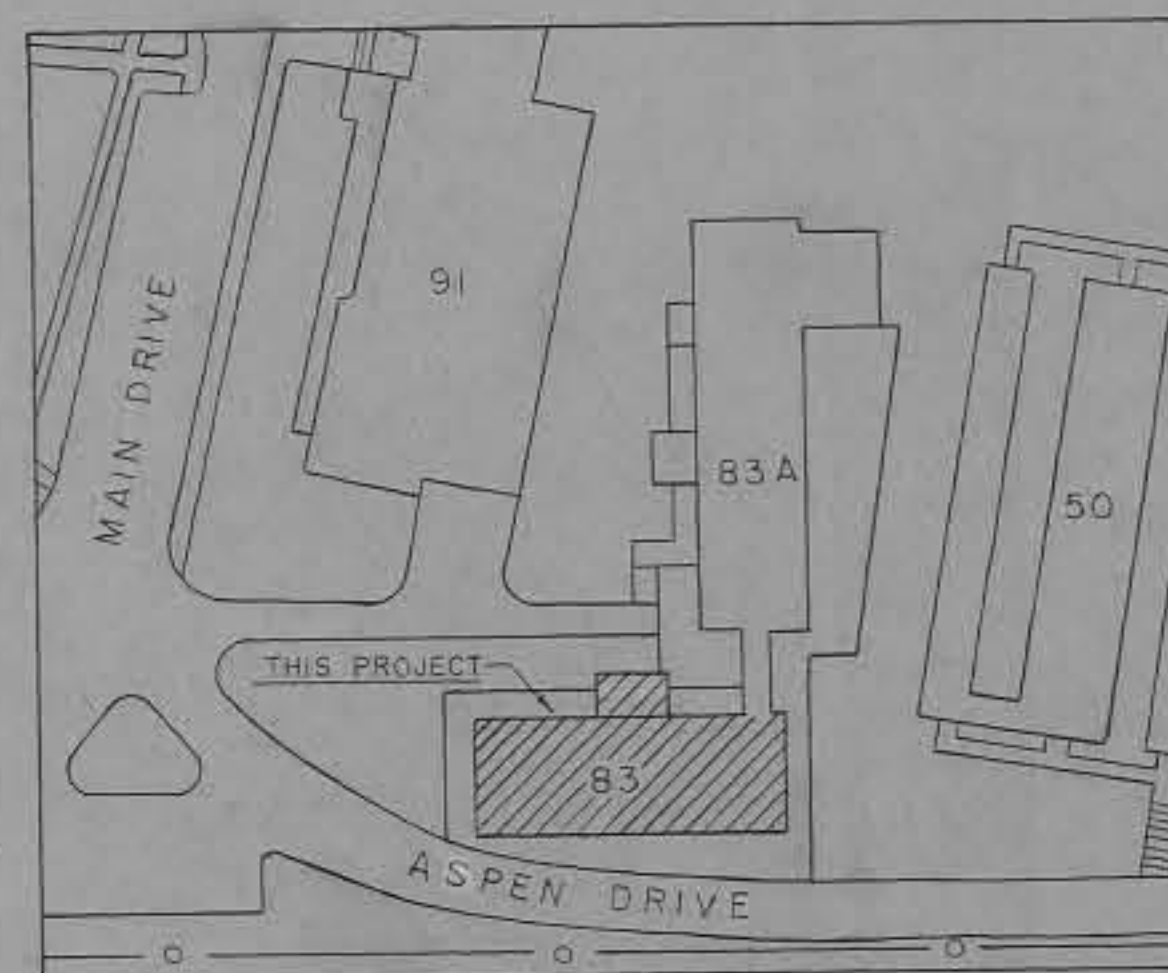
# WALTER REED ARMY MEDICAL CENTER

## MODIFICATION TO

## ANIMAL HOUSE

## BUILDING NO. 83

## MAIN SECTION



PLOT PLAN  
SCALE: 1" = 50'

INDEX	
SHEET NO.	SHEET TITLE
1	ARCHITECTURAL PLANS-EXISTING and PROPOSED-B'SMT FL.
2	" " " " 1 ST FL.
3	ARCHITECTURAL SECTION and DETAILS
4	AIR CONDITIONING and PLUMBING-B'SMT FL.
5	" " " " 1 ST FL.
6	AIR CONDITIONING DETAILS
7	ELECTRICAL PLANS-EXISTING and PROPOSED-B'SMT FL.
8	" " " " 1 ST FL.

CENTER ENGINEER BRANCH

DATE 16 MARCH 1959

PROJECTS AND PLANS SECTION

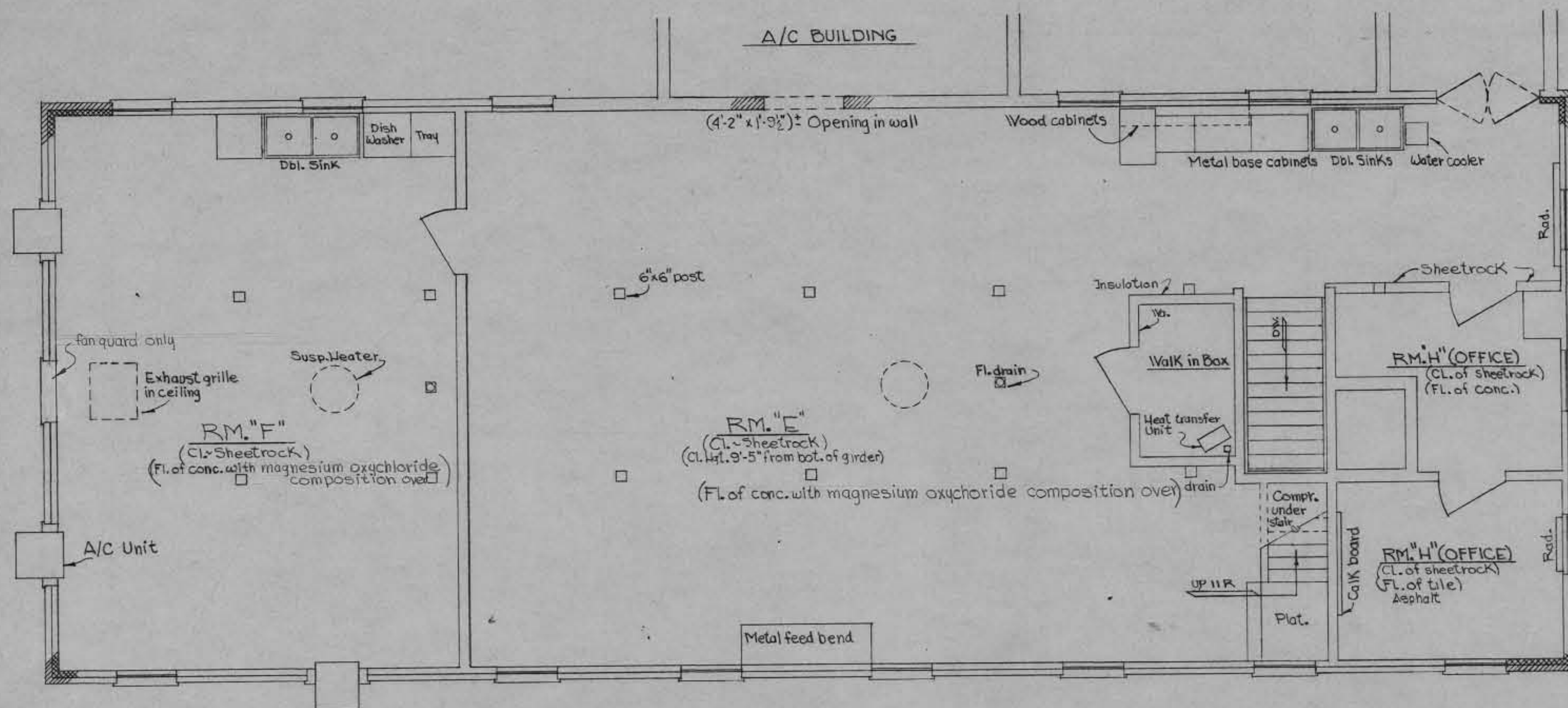
DRAWING NO. PR 24-59

AS BUILT DRAWING  
DATE: 12 JAN 1961  
BY: \_\_\_\_\_

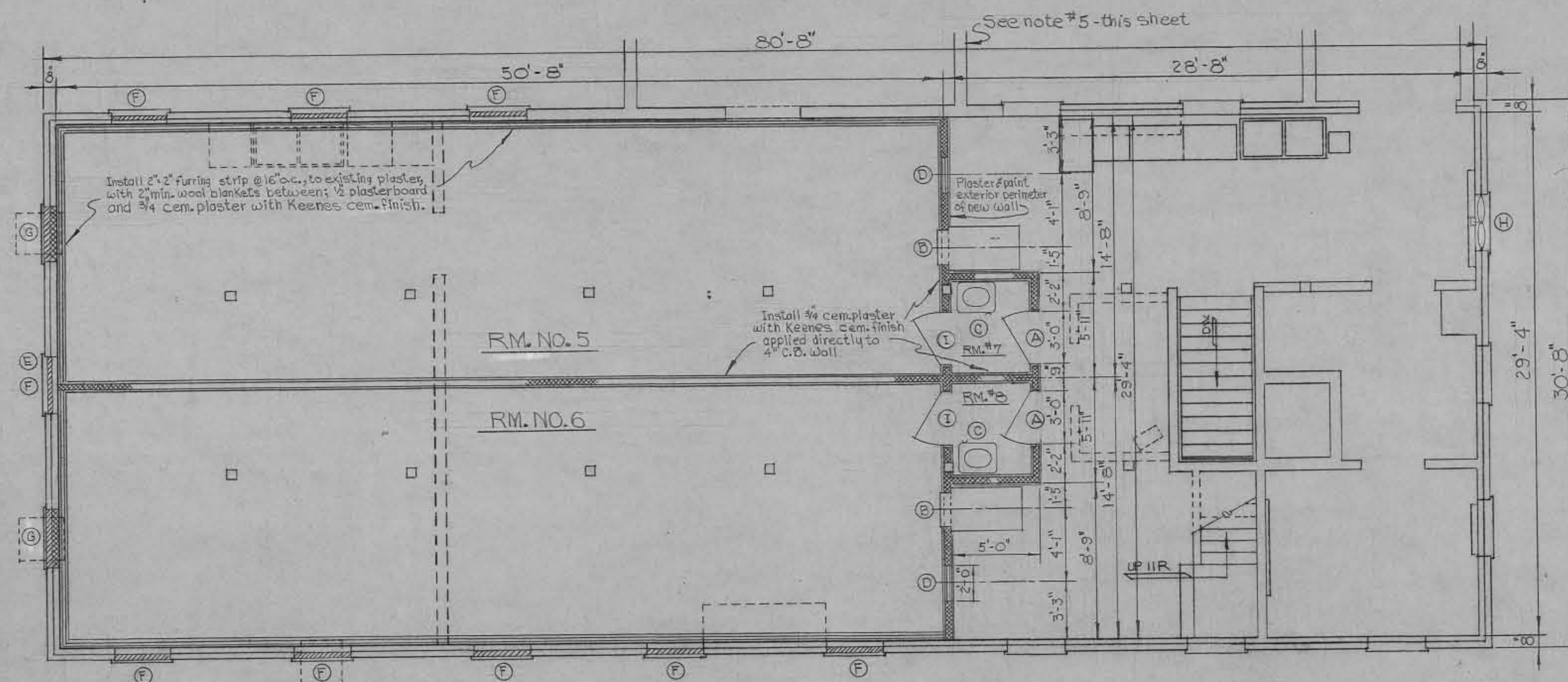
SORT # 59 - C -

IFS 83 60 A





EXISTING FIRST FLOOR PLAN  
SCALE: 1/4" = 1'-0"



PROPOSED FIRST FLOOR PLAN  
Scale: 1/4" = 1'-0"

LEGEND	
SYMBOL	DESCRIPTION
	Brick (new work as shown on proposed plan)
	Cin. bl. (new work as shown on proposed plan)
	Indicates work to be removed
(A)	3'-0" x 7'-0" x 1 1/4" Kalamain door & hollow metal jamb - w/door closers (total no. of doors = 2)
(B)	Pass-Thru Feeder; steam operated, furnished by others, installed by contractor
(C)	20" x 24" Service wash-up sink w/knee action control
(D)	18" x 24" Window with fixed aluminum sash
(E)	Remove fan & Guard
(F)	Remove steel win. & metal sash and block up existing window. See detail "B" sheet no. 3
(G)	Remove steel win. & metal sash and install metal Louver; block up to bottom of lower. See detail "A" sheet no. 3
(H)	Relocate fan & guard from basement floor
(I)	3'-0" x 7'-0" x 1 1/4" Stainless steel door & stainless steel hollow metal jamb w/door closer (total no. of doors = 2)

#### GENERAL NOTES:

- 1- Remove all plumbing, A/C, and heating fixtures shown in dotted lines and cap off in floor or walls.
- 2- Remove existing Magnesium Oxychloride composition flooring, only in area where proposed work is to be done, from existing conc. floor, in Rms. Nos. 5, 6, 7, & 8.
- 3- All utility lines in Rms. Nos. 5, 6, 7, & 8 not being used shall be removed.
- 4- All floor drains in Rms. Nos. 5 & 6 shall be capped off.
- 5- In the A/C enclosure install steel casement window in existing 18" x 36" rough opening, not being used for louvers, to match existing window.

#### ALTERNATE NO. 1

Item (A) above shall be stainless steel doors, see item (I), and will conform with basic specifications.

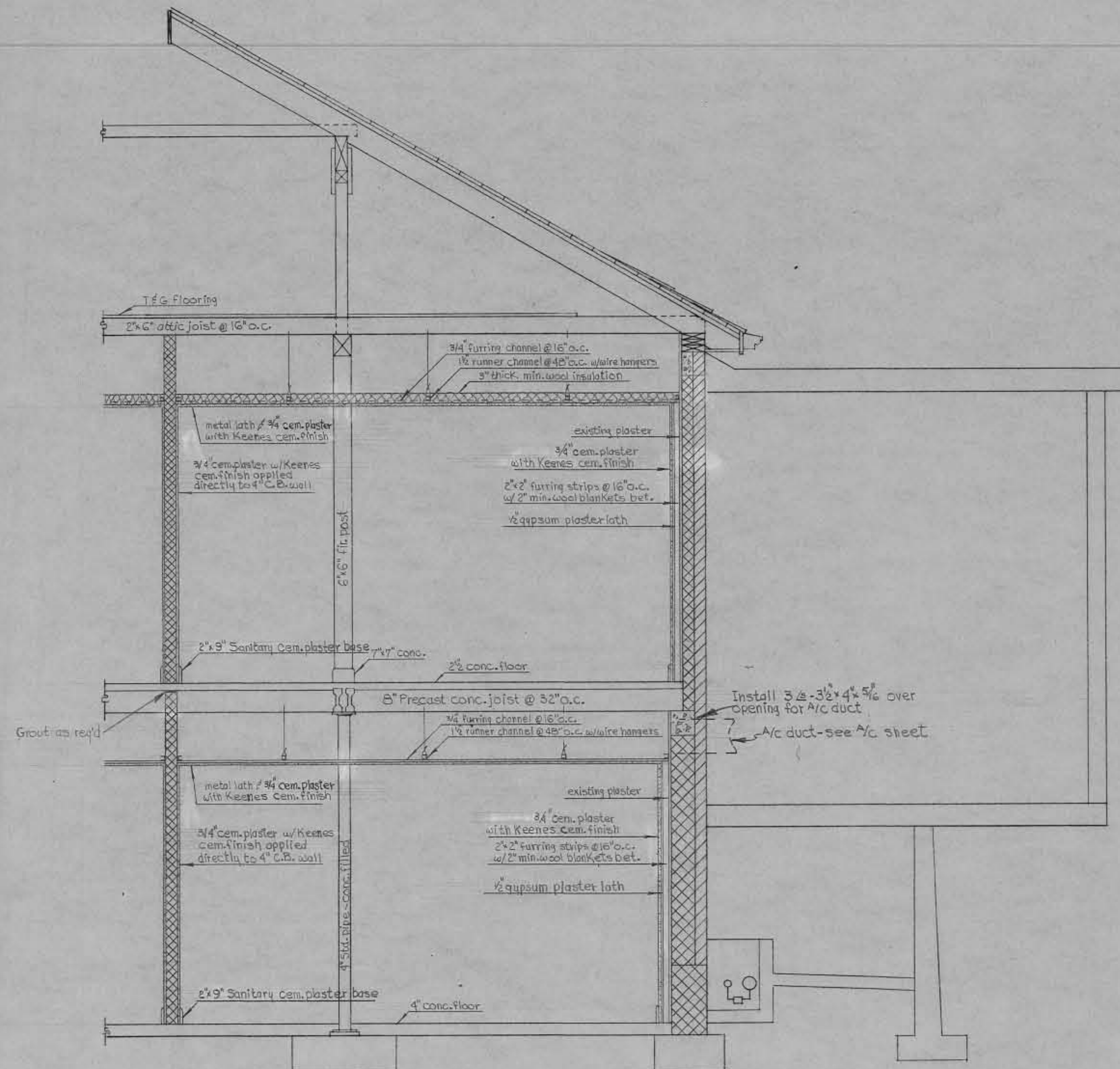
AS BUILT DRAWING

DATE: 12 JAN 1964

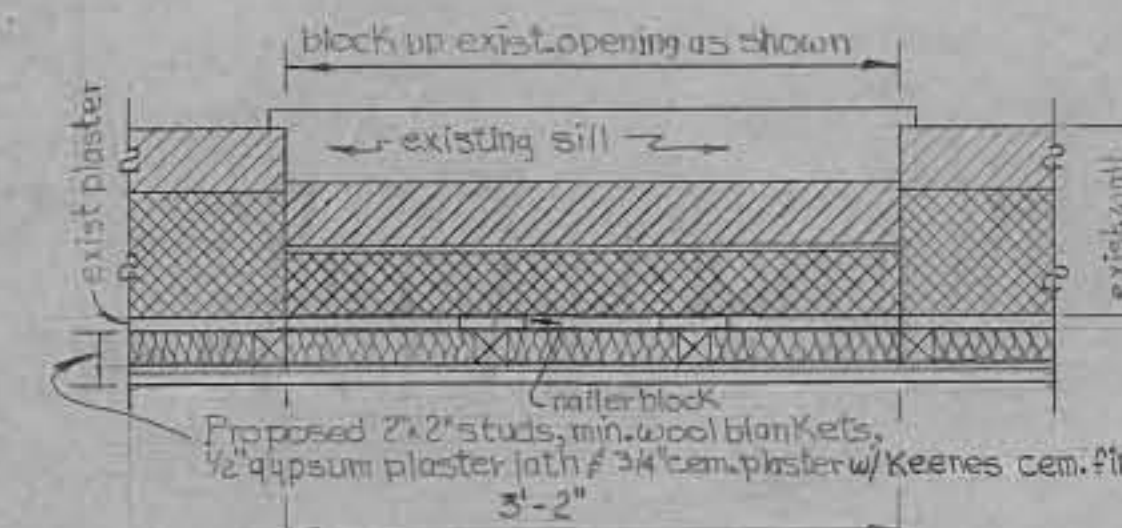
BY:

REVISION	DATE	DESCRIPTION	BY
<b>WALTER REED ARMY MEDICAL CENTER</b> <b>OFFICE OF THE CENTER ENGINEER</b> <b>WASHINGTON 12, D. C.</b>			
DESIGNED BY: U.R.V. #N.A.G.	MODIFICATION TO		
DRAWN BY: N.A. CAMPER	ANIMAL HOUSE		
DRAFTING CHK. BY: P.E. Wolfe	BLDG. NO. 83		
ENGRG. CHK. BY:	Architectural Plans - Existing & Proposed - 1st FL.		
APPD. BY: P. & P.			
SUBMITTED BY: Jacob P. Landau	3/16/59	APPROVED BY: [Signature]	(DATE)
SCALE: As Shown	PROJECT NO: PR-24-59	SHEET 2 OF 8	2

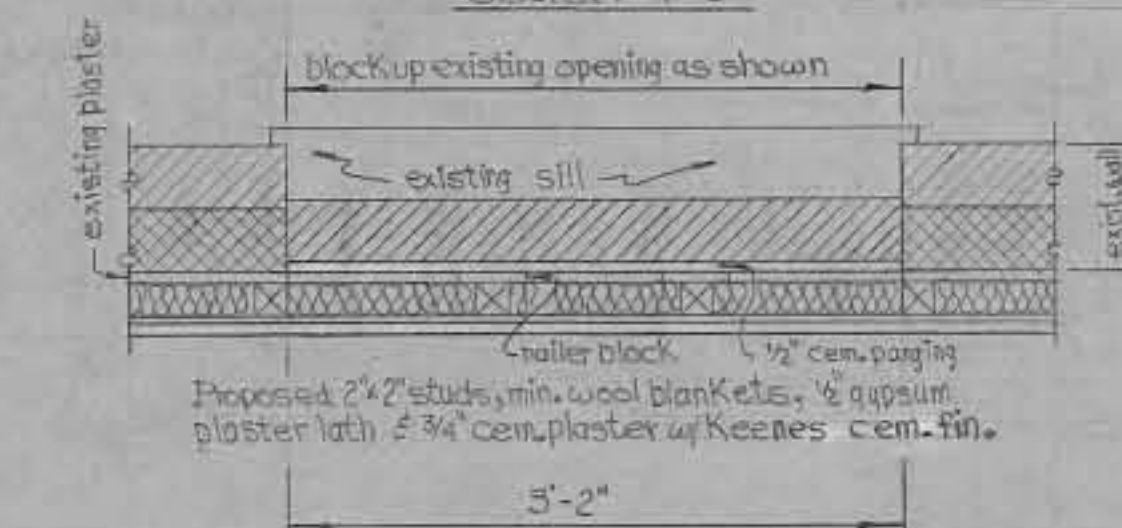




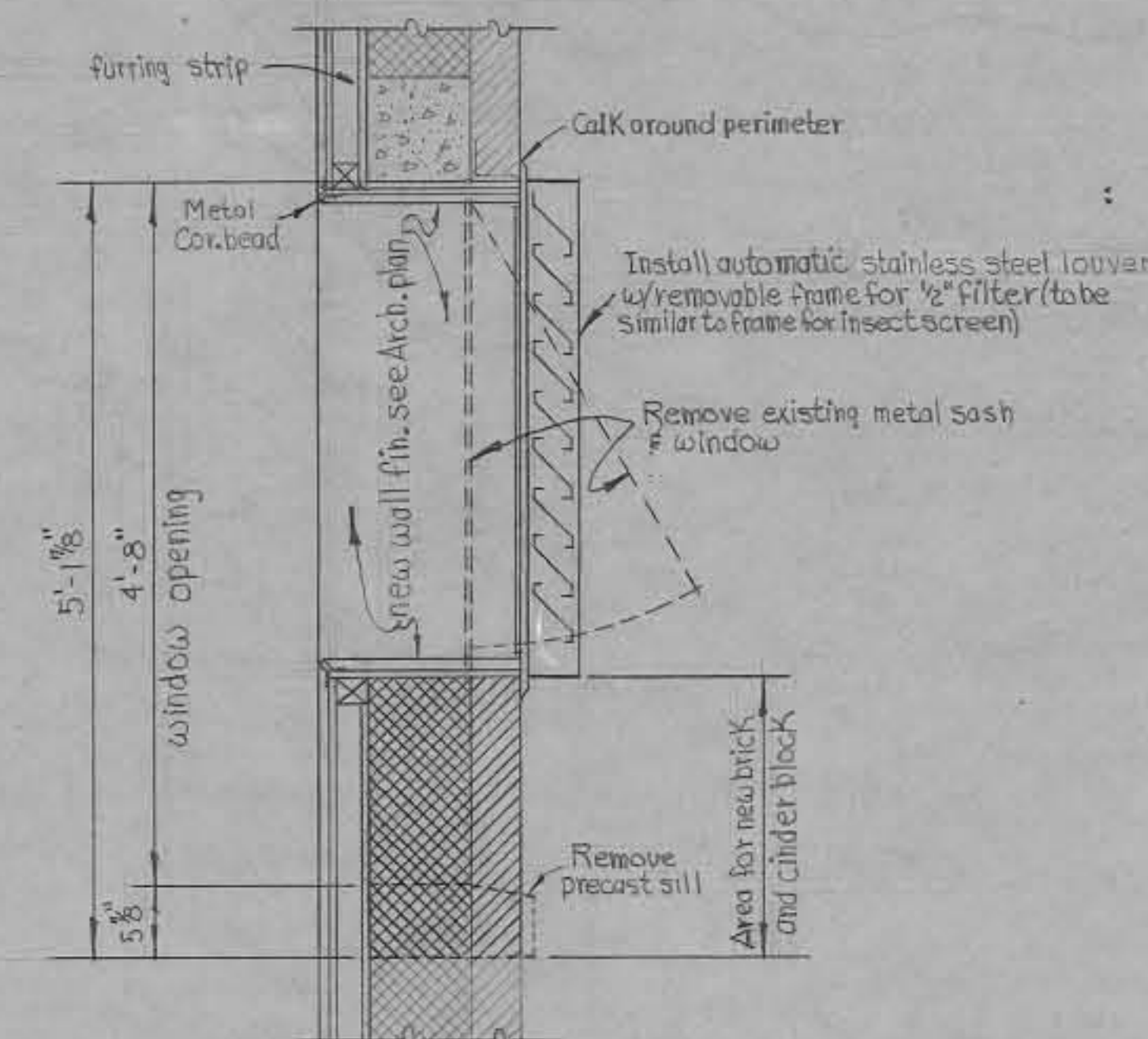
HALF CROSS SECTION  
SCALE: 1/2" = 1'-0"



DETAIL "C"  
Scale: 1" = 1'-0"



DETAIL "B"  
Scale: 1" = 1'-0"

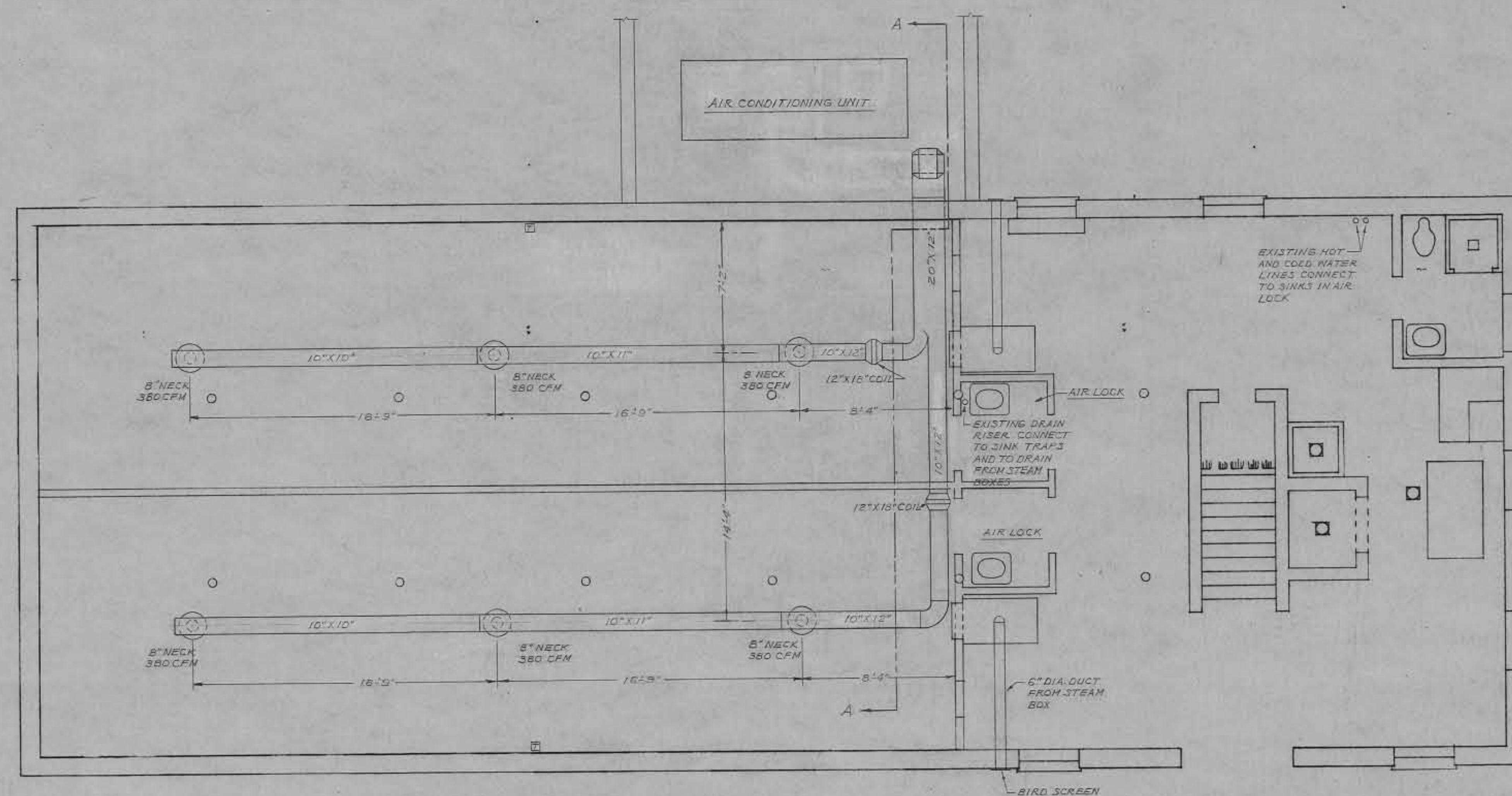


DETAIL "A" - TYPICAL  
Scale: 1" = 1'-0"

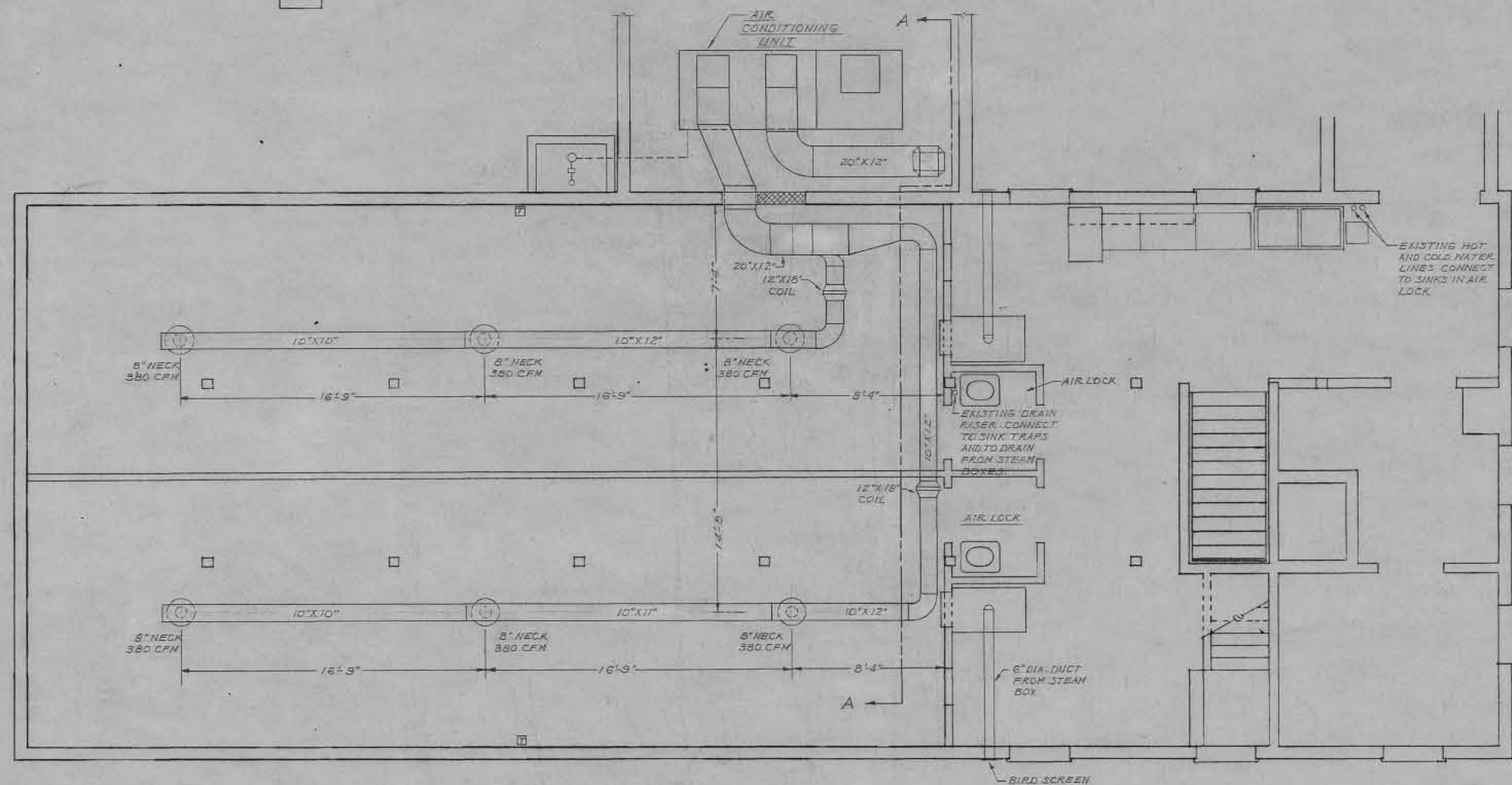
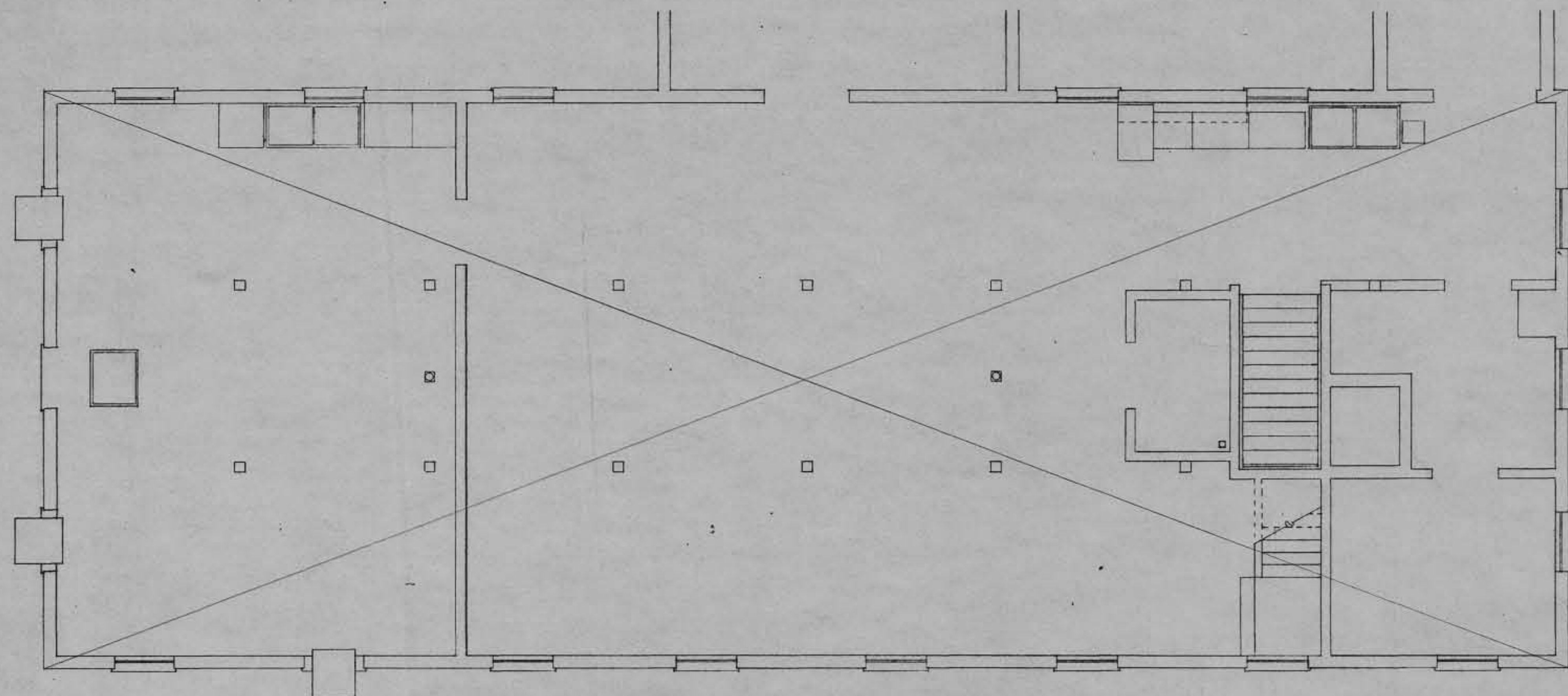
AS BUILT DRAWING  
DATE: 12 JAN 1961  
BY:

REVISION	DATE	DESCRIPTION	BY
<b>WALTER REED ARMY MEDICAL CENTER</b> <b>OFFICE OF THE CENTER ENGINEER</b> <b>WASHINGTON 12, D. C.</b>			
DESIGNED BY: J.R.N. & N.A.C. DRAWN BY: N.A. CAMPER DRAFTING CHK. BY: R.E. WOLITZ ENGRG. CHK. BY: APPD. BY P. & P:		MODIFICATION TO ANIMAL HOUSE BLDG. NO. 83 Architectural Section # Details	
SUBMITTED BY: <i>James P. Vandew</i> 3/16/59 SCALE: As Shown		APPROVED BY: <i>Mrs. Barnes</i> (DATE) PROJECT NO. PR-24-59 SHEET 3 OF 3	







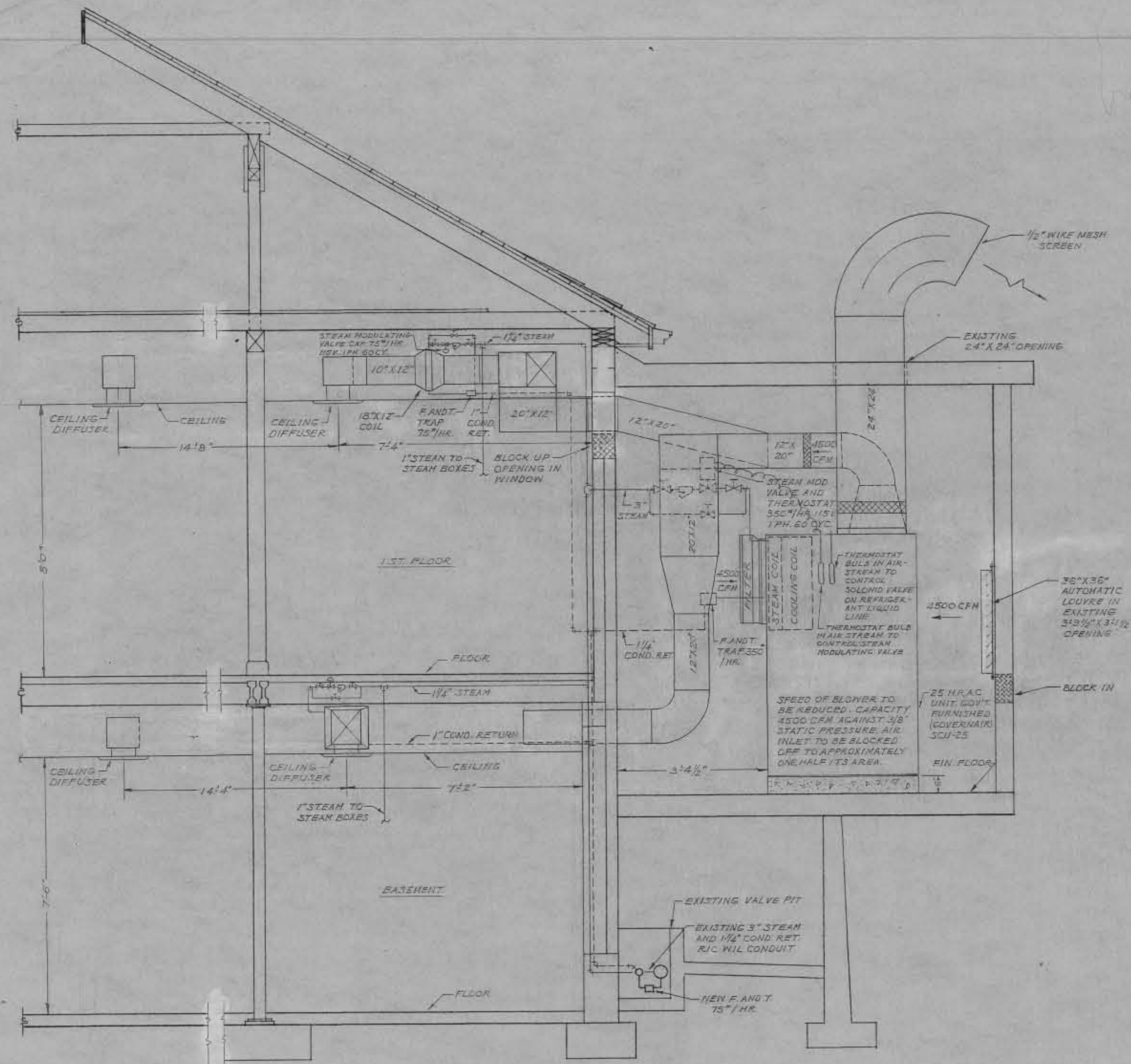


PROPOSED-FIRST FLOOR PLAN  
SCALE: 1/4" = 1'-0"

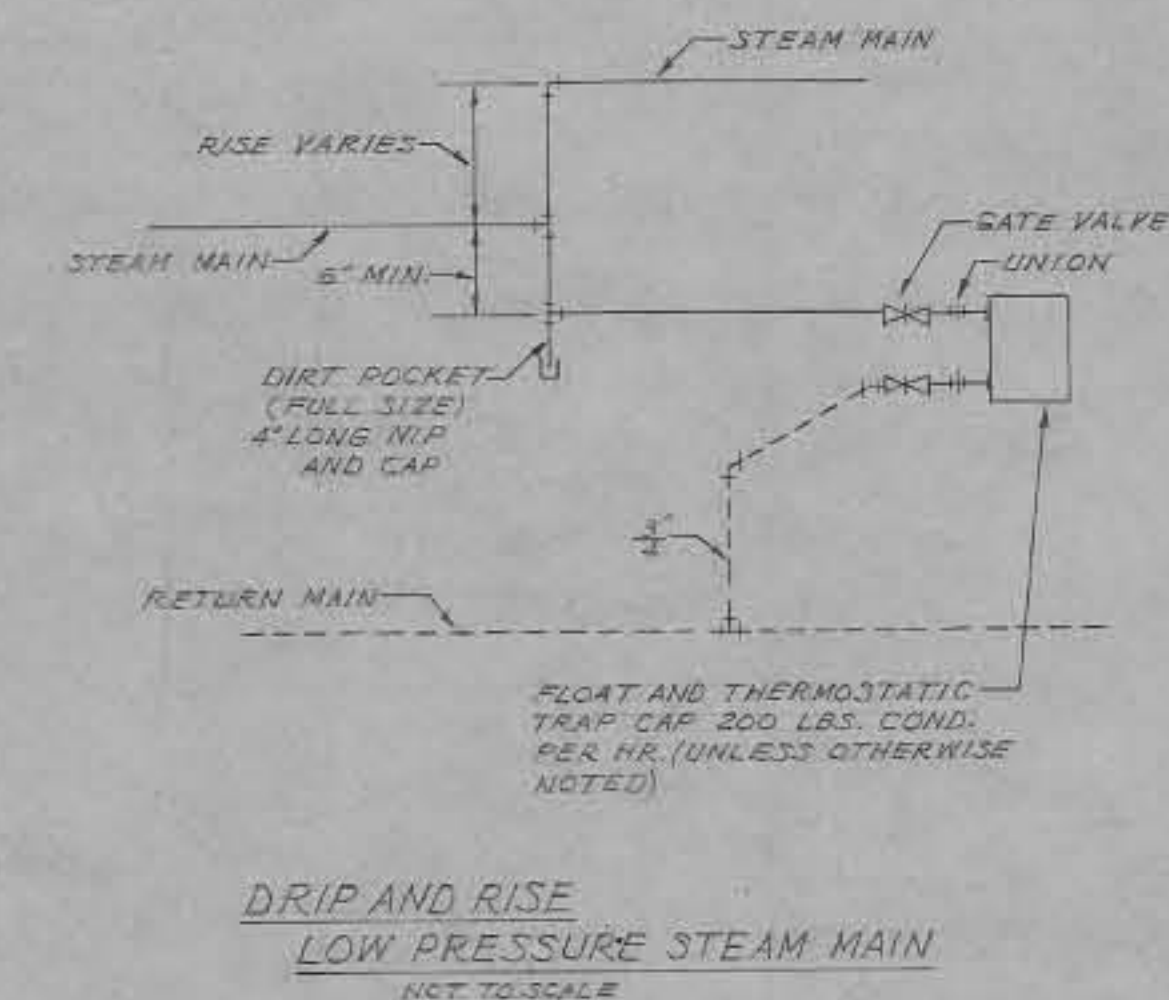
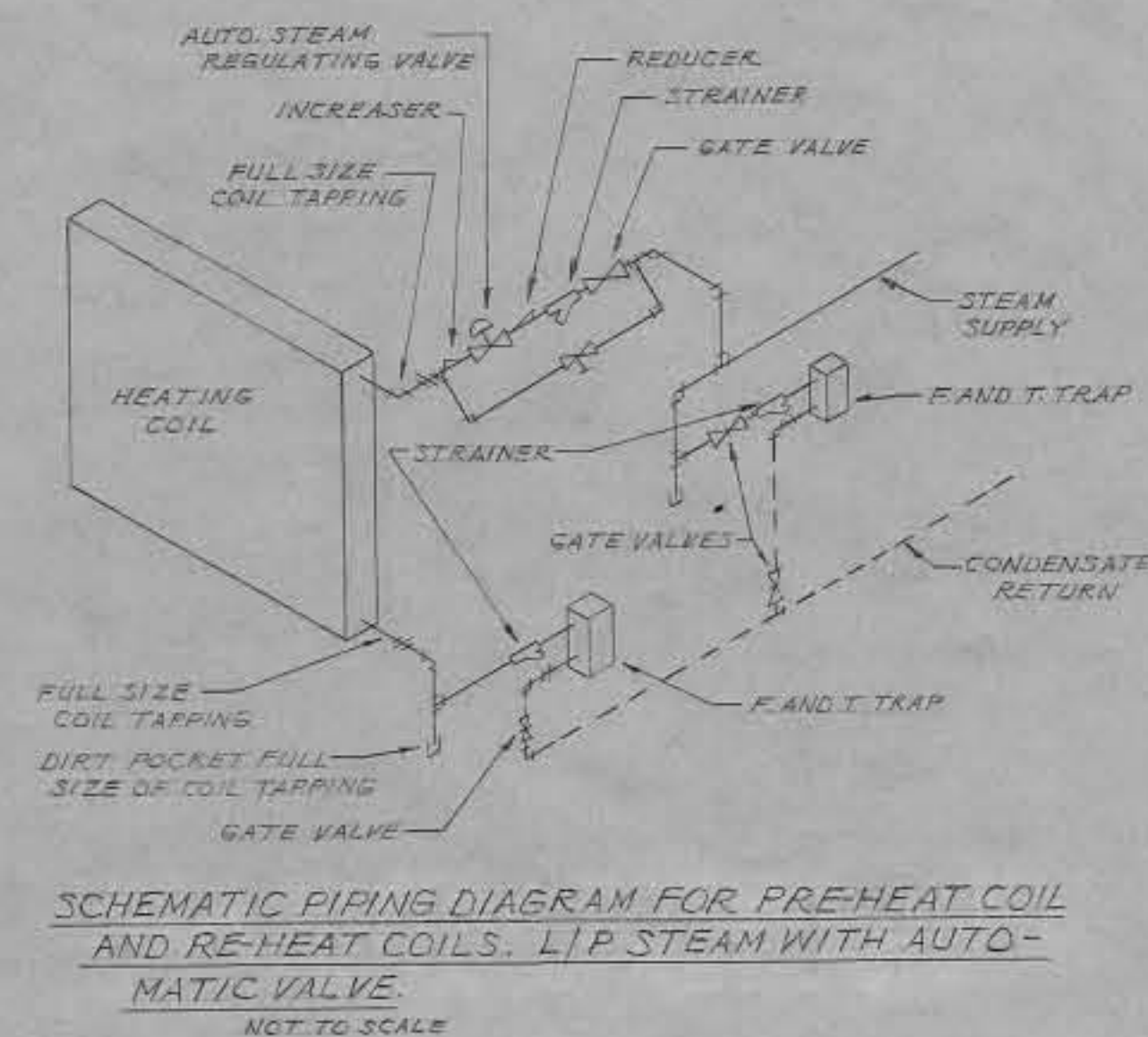
AS BUILT DRAWING  
DATE: 18 JAN 1964  
BY:

REVISION	DATE	DESCRIPTION	BY
<b>WALTER REED ARMY MEDICAL CENTER</b> <b>OFFICE OF THE CENTER ENGINEER</b> <b>WASHINGTON 12, D. C.</b>			
DESIGNED BY: WADDELL DRAWN BY: N. CAMPER AE DRAFTING CHK. BY: P. E. WOLFE ENGRG. CHK. BY: APPD. BY P. & P:		MODIFICATION TO ANIMAL HOUSE BLDG. NO. 83 AIR CONDITIONING AND PLUMBING-1 ST. FLOOR	
SUBMITTED BY: <i>James P. Kander</i> 3/16/59 SCALE: As Shown		APPROVED BY: <i>[Signature]</i> (DATE) PROJECT NO. PR. 24-59 SHEET 5 OF 8	





SECTION 'A-A'  
SCALE 1/2" = 1'-0"



AS BUILT DRAWING  
DATE: 12 JAN 1961  
BY: \_\_\_\_\_

REVISION	DATE	DESCRIPTION	BY

**WALTER REED ARMY MEDICAL CENTER  
OFFICE OF THE CENTER ENGINEER  
WASHINGTON 12, D. C.**

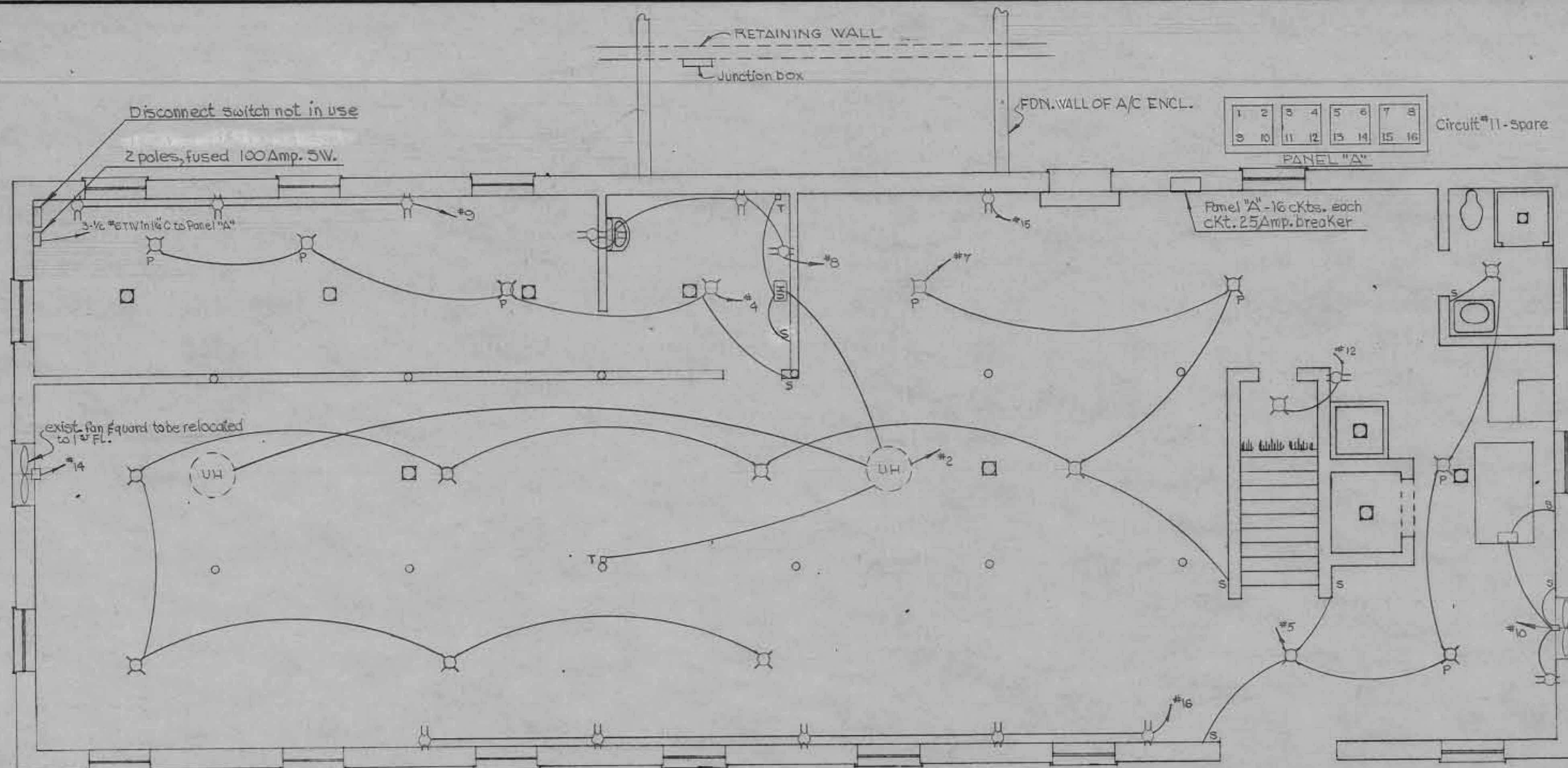
DESIGNED BY: WADDELL  
 DRAWN BY: N.A. CAMPER AE  
 DRAFTING CHK. BY: R.E. WITTE  
 ENGRG. CHK. BY: \_\_\_\_\_  
 APPD. BY P. & P: \_\_\_\_\_

**MODIFICATION TO  
ANIMAL HOUSE  
BLDG. NO. 83**

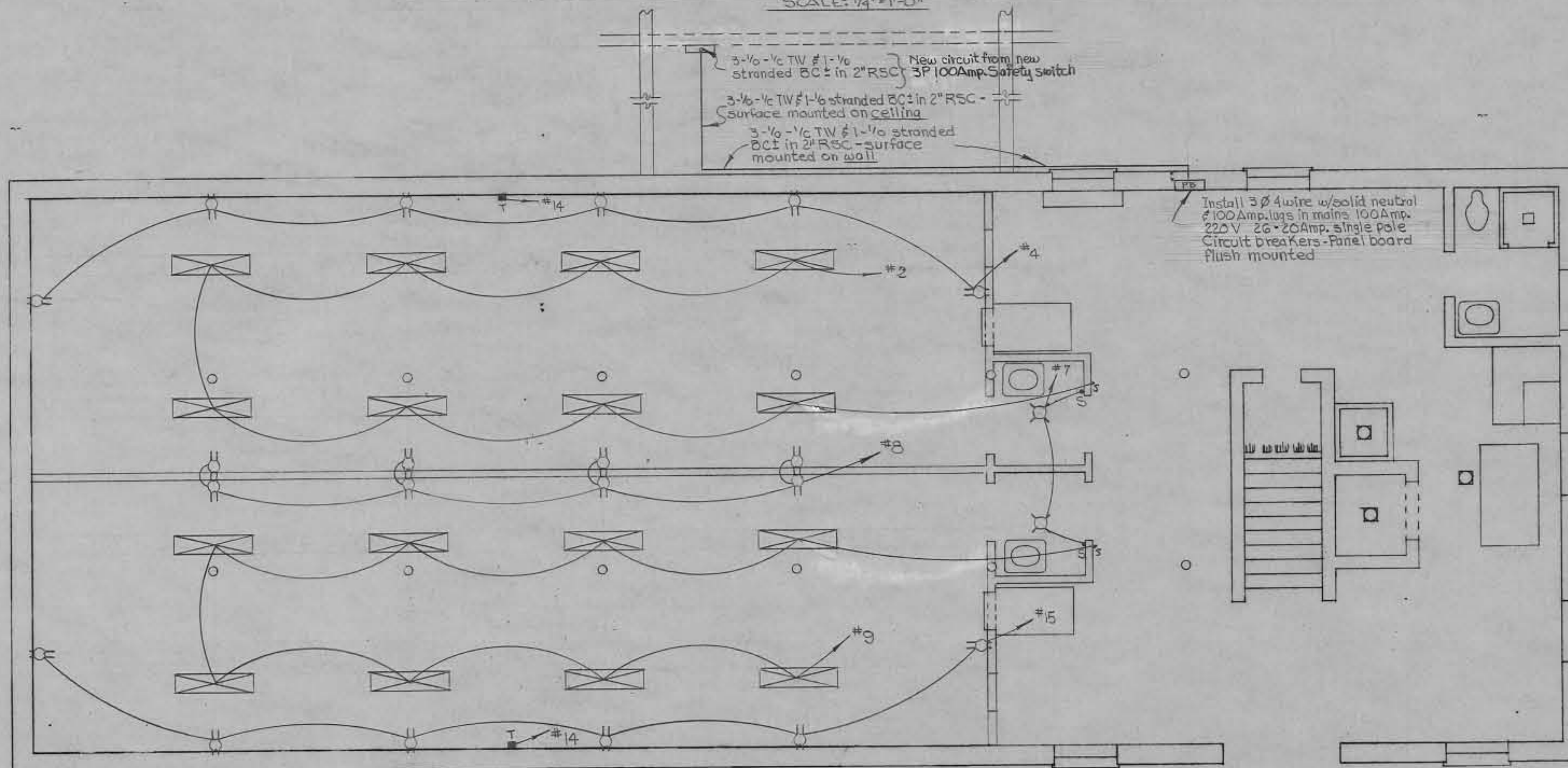
**AIR CONDITIONING DETAILS**

SUBMITTED BY: James P. Konder 3/16/59 (DATE)  
 APPROVED BY: [Signature] (DATE)  
 SCALE: As Shown PROJECT NO. PR. 24-59 SHEET 6 OF 8





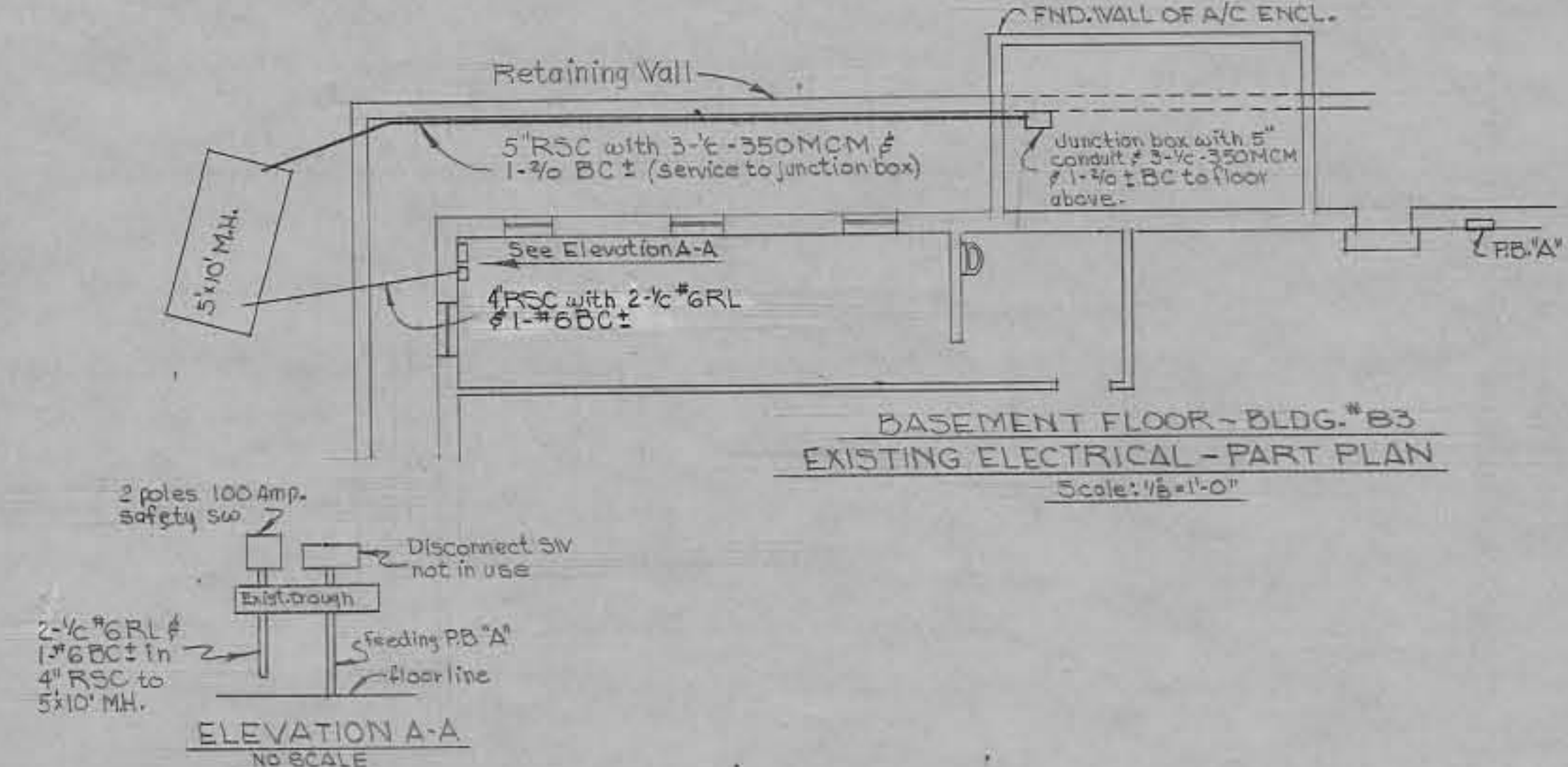
EXISTING BASEMENT FLOOR ELECTRICAL PLAN  
SCALE: 1/4" = 1'-0"



PROPOSED BASEMENT FLOOR ELECTRICAL PLAN  
SCALE: 1/4" = 1'-0"

FB OR NO.	TYPE	FB OR NO.	TYPE
1	Old Circuit	2	New Circuit
3	Old Circuit	4	New Circuit
5	Old Circuit	6	Old Circuit
7	Old Circuit	8	New Circuit
9	New Circuit	10	Old Circuit
11	New Circuit	12	Old Circuit
13	Old Circuit	14	New Circuit
15	New Circuit	16	Old Circuit
17	New Circuit	18	New Circuit
19	New Circuit	20	New Circuit
21	Spare	22	Spare
23	Spare	24	Spare
25	Spare	26	Spare

NEW 3Ø 4 WIRE 100AMP.  
220V PANEL BOARD  
NO SCALE



BASEMENT FLOOR - BLDG. #83  
EXISTING ELECTRICAL - PART PLAN  
Scale: 1/8" = 1'-0"

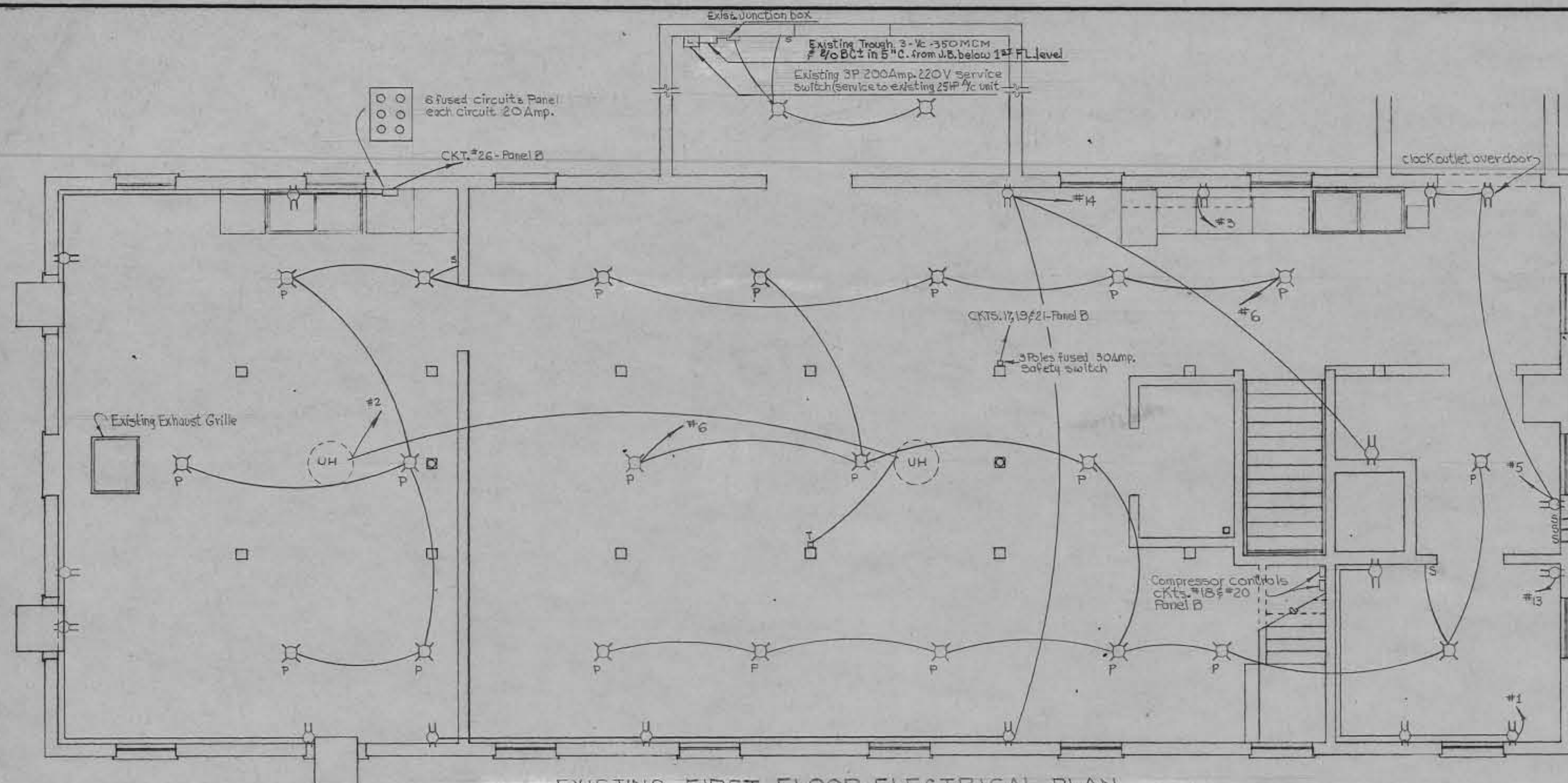
**GENERAL NOTE**  
Disconnect existing service feeding 2 poles 100Amp. Safety SW. located on basement floor of Bldg. #83. This service shall be disconnected at the secondary bus in 5x10' Manhole and this service from the Manhole through the switch and to the existing Panel board "A" shall be removed, also remove Panel "A". The cut-off "Hot ends" in the Manhole shall be sealed and protected with tape. Disconnect ckt. nos. 17, 19, 21 & 26. Panel board "B". Abandon existing circuits and remove conduit and wires. Ckts. nos. 18 & 20. Panel board "B" to remain in service.  
Install new electrical service with new equipment as drawing calls for. All new circuit shall be concealed. All existing circuits feeding old & new modified section shall be arranged in such away so as the circuit number in the old section will keep the same number as originally called for; given new circuit number according to drawing.  
All existing telephones to remain.  
All removed equipment including circuits, wires, etc. shall be returned to warehouse #2.

SYMBOL	DESCRIPTION
	Recessed mounted 4-40 Watts Fluorescent fixture w/flat plastic bottom
	3Ø 4 wires 1/4 100 Amp. 220V with 2Ø 20 Amp. 5P. Circuit Breakers
	3 wire Grounding Duplex Receptacle 15 Amp. 125V
	Single pole switch 20Amp. 125V
	Thermostat
	Keyless porcelain ceiling fixture w/ 75 W incandescent bulb

AS BUILT DRAWING  
DATE: 12 JAN 1961  
BY: \_\_\_\_\_

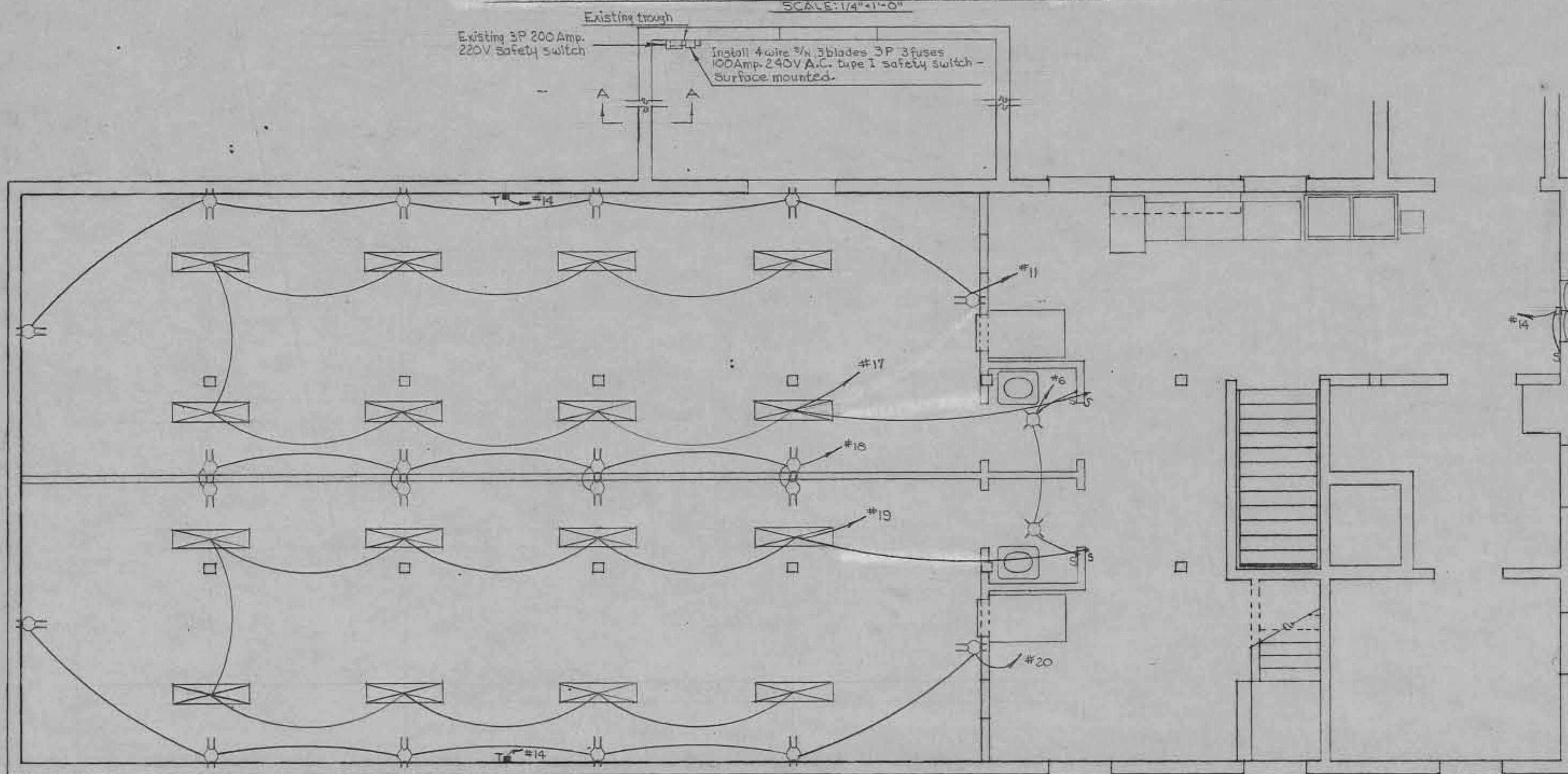
DESIGNED BY: B.W.D.	MODIFICATION TO ANIMAL HOUSE BLDG. NO. 83 Electrical Plan - Existing & Proposed - Bsmt. Fl.
DRAWN BY: NIXON A. CAMPER	
DRAFTING CHK. BY: R.E. WALTZ	
ENGRG. CHK. BY: B.W.D.	
APPD. BY: P. & P.	
SUBMITTED BY: <i>James R. Kandel</i>	APPROVED BY: <i>M.B. [Signature]</i>
DATE: 2/16/59	DATE: _____
SCALE: As Shown	PROJECT NO. PR-24-59
SHEET 7 OF 8	7





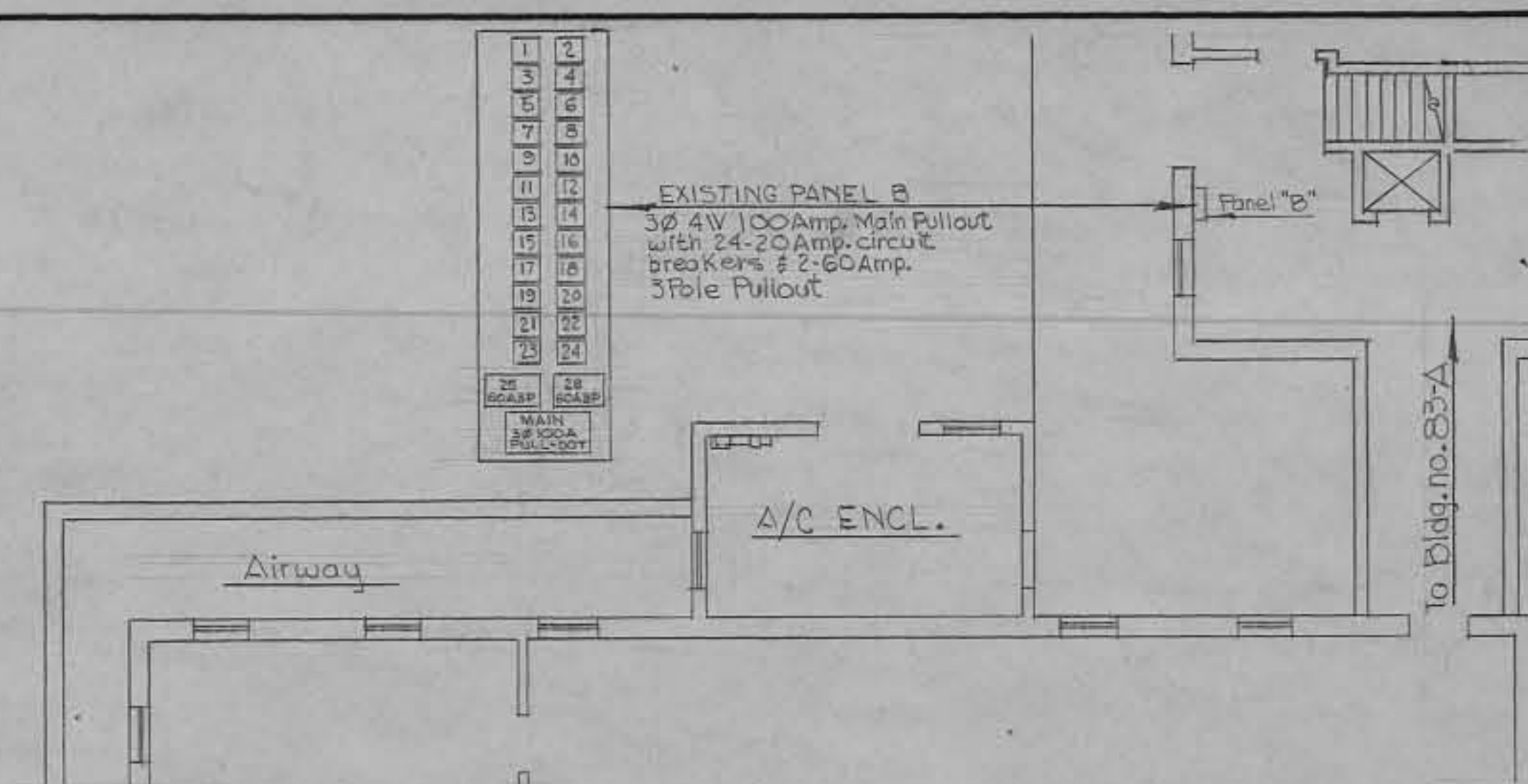
EXISTING FIRST FLOOR ELECTRICAL PLAN

SCALE: 1/4" = 1'-0"



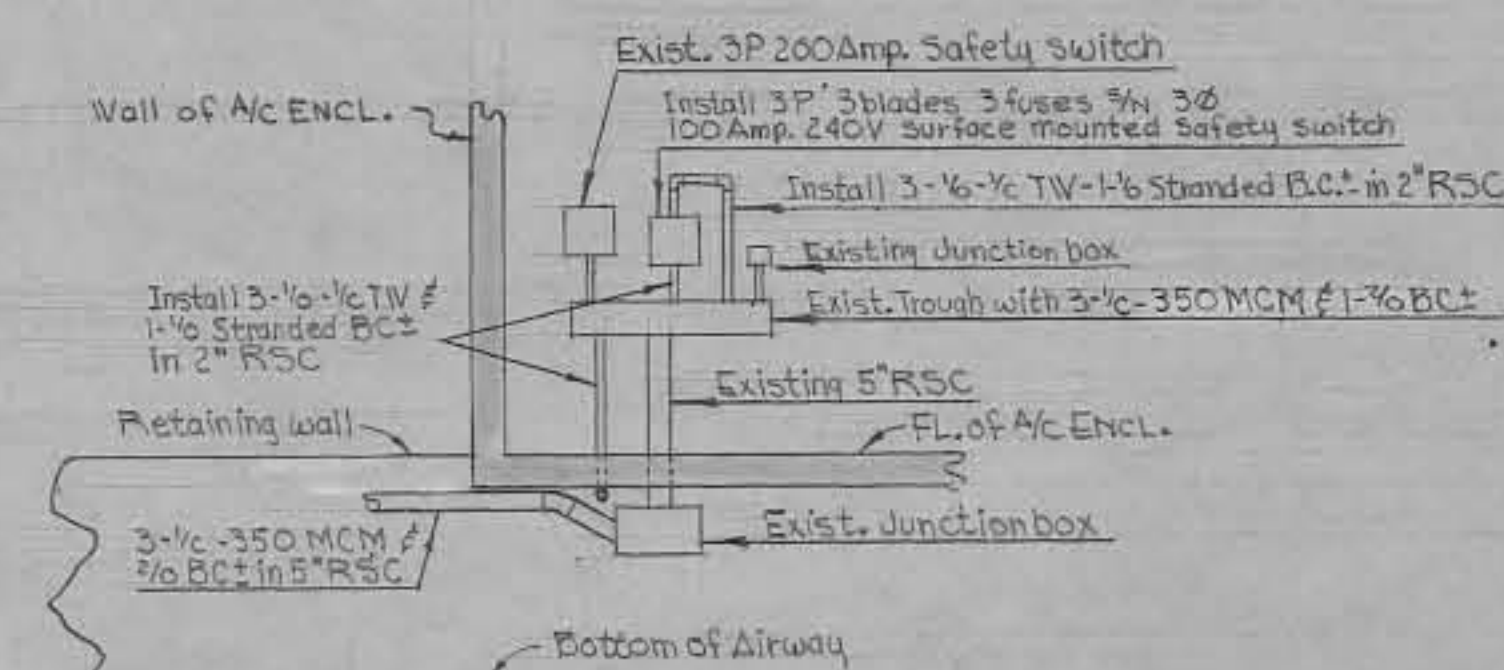
PROPOSED FIRST FLOOR ELECTRICAL PLAN

SCALE: 1/4" = 1'-0"



BASEMENT FLOOR - BLDG. #83  
EXISTING ELECTRICAL - PART PLAN

Scale: 1/4" = 1'-0"



ELEVATION A-A

EXISTING & NEW ELECTRICAL EQUIPMENT  
NO SCALE

SYMBOL DESCRIPTION

- Recessed mounted 4-40 Watts Fluorescent fixture w/flat plastic bottom
- 3Ø 4 wires 3/4 100 Amp. 220V with 26-20 Amp. S.P. Circuit Breakers
- 3 wire Grounding Duplex Receptacle 15 Amp. 125V
- Single pole switch 20 Amp. 125V
- Thermostat
- Keyless porcelain ceiling fixture w/75V incandescent bulb

General notes will be founded on Basement Floor Electrical Plan.

REVISION	DATE	DESCRIPTION	BY
<b>WALTER REED ARMY MEDICAL CENTER</b> <b>OFFICE OF THE CENTER ENGINEER</b> <b>WASHINGTON 12, D. C.</b>			
DESIGNED BY:	B. W. D.	MODIFICATION TO	
DRAWN BY:	N. A. CAMPER	ANIMAL HOUSE	
DRAFTING CHK. BY:	Robt. E. Wolt	BLDG. NO. 83	
ENGRG. CHK. BY:	ELIOT B. W. D.	Electrical Plan - Existing & Proposed - 1st FL.	
APPD. BY: P. & P.			
SUBMITTED BY:	James F. Kandler	3/16/59	APPROVED BY:
SCALE:	As Shown	PROJECT NO. PR-24-59	SHEET 8 OF 8

AS BUILT DRAWING  
DATE: 12 JAN 1961  
BY: