



April 6, 2012

Materials Licensing Branch, Medical Use
U.S. Nuclear Regulatory Commission, Region III
2443 Warrenville Road, Suite 210
Lisle, IL 60532-4352

Ref: Materials License Number 24-17477-01

Dear Sirs:

Please remove the following physicians, who are no longer at our institution, as authorized users from the above license:

Sidney Belshe, M.D.
Mark P. Bryer, M.D.
Hugh J. Murrell, M.D.
Steven J Westgate, M.D.

If you have any questions, please do not hesitate to contact me at 573-761-7079.

Thank you.

Sincerely yours

A handwritten signature in black ink, appearing to read "Kim Weith", written over a horizontal line.

Kim Weith

Director Laboratory/Radiology

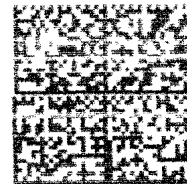
RECEIVED APR 17 2012



100 St. Mary's Medical Plaza
Jefferson City, MO 65101

RETURN SERVICE REQUEST

PRESORTED
FIRST CLASS



Hasler

016H26523581

\$00.424

04/13/2012

Mailed From 65109
US POSTAGE

Materials Licensing Branch, Medical Use
U.S. Nuclear Regulatory Commission, Region III
2443 Warrenville Road, Suite 210
Lisle, IL 60532-4352

Member of SSM Health Care

Nuclear Medicine

605324352 60532

