

STRATA ENERGY, INC.
ROSS ISR PROJECT
NRC DOCKET #040-09091
REQUEST FOR PROPOSALS
FOR CULTURAL RESOURCE SERVICES
February 20, 2012

INTRODUCTION:

In January 2011, Strata Energy, Inc. (Strata) submitted a new combined source and 11e.(2) byproduct material license application to the United States Nuclear Regulatory Commission (NRC). NRC Staff is currently reviewing the application. In order to comply with the National Environmental Policy Act (NEPA) and National Historic Preservation Act (NHPA), NRC Staff has requested additional information regarding cultural resources from Strata for its proposed Ross in-situ leach uranium recovery (ISR) project. Strata is seeking proposals and qualifications for an individual or organization (Consultant) to provide cultural resource services, with particular regard to the collection, aggregation and analysis of ethnographic information including the identification, documentation and mapping of properties of traditional cultural importance as described below. Those responding to this Request for Proposals (RFP) should have extensive experience and a knowledgeable background in identifying and evaluating traditional cultural properties, and qualifications in the provision of the services described herein.

Per National Parks Service Bulletin 38, *Guidelines for Evaluating and Documenting Traditional Cultural Properties*, a traditional cultural property is defined generally as “one that is eligible for inclusion in the National Register because of its association with cultural practices or beliefs of a living community that (a) are rooted in that community's history, and (b) are important in maintaining the continuing cultural identity of the community” (Bulletin 38, p. 1). The Bulletin further states that “the entity evaluated must be a tangible property—that is, a district, site, building, structure, or object (p. 11).

BACKGROUND:

The NRC license application submitted by Strata included an Environmental Report (ER) and Technical Report (TR). The ER provides the basis for NRC's environmental review and its future Supplemental Environmental Impact Statement (SEIS), while the TR provides the basis for NRC Staff's safety review and its future Safety Evaluation Report (SER). Key aspects of the ER included a baseline viewshed analysis and results of the Class I/III cultural resource surveys. With these data and analyses, NRC Staff initiated consultation efforts with potentially interested Tribes and other parties (Bureau of Land Management (BLM), Wyoming State Historic Preservation Office (WSHPO), National Park Service (NPS)) in February 2011. The potential consulting parties are included as Appendix A. As the lead federal agency, NRC Staff sent letters and conducted meetings and conference calls to establish communication pathways between interested parties. Two meetings with potential consulting parties were conducted in Wyoming; the result of these meetings was the

aforementioned request for additional information from NRC Staff to Strata, included as Appendix A. This RFP is a result of these early consultation efforts and reflects the need for additional ethnographic and cultural resource information to support this application review process.

As stated in ER Section 3.8.4 Tribal Consultation:

No Native American heritage, special interest, or sacred sites have been formally identified and recorded to date directly associated with the proposed project. However, the geographic position of the area between mountains considered sacred by various Native American cultures (the Big Horn Mountains to the west, the Black Hills to the east, and Devils Tower to the east) creates the possibility that existing locations may have special religious or sacred significance to Native American groups. If such sites or localities are identified at a later date, appropriate action must be taken to address concerns related to those sites. The only Tribal reservation in Wyoming is the Wind River Indian Reservation (approximately 170 miles southwest). The nearest Indian reservations to the proposed project area are the Crow and Northern Cheyenne Indian Reservations in Montana (approximately 100 and 91 miles northwest, respectively) and the Pine Ridge Indian Reservation in South Dakota (approximately 115 miles southeast).

A review of literature indicates that Devils Tower (located approximately 11 miles (18 km) from the site) is a sacred area for several Plains Tribes (Hanson and Chirinos 1991). According to the National Park Service (NPS), over 20 tribes have potential cultural affiliation with Devils Tower National Monument. Six tribes (Arapaho, Crow, Lakota, Cheyenne, Kiowa, and Shoshone) have historical and geographical ties to the Devils Tower area (NPS 2010). Traditional ceremonial activities which demonstrate the sacred nature of Devils Tower to American Indians include personal rituals (prayer offerings (bundles and cloths), sweatlodge ceremonies, vision quests, and funerals), group rituals (Sun Dance), and sacred narratives (origin legends, legends of culture heroes, and legends of the origins of ceremonies and sacred objects). Among these rituals, all are still practiced at Devils Tower except for funerals (NPS 2010).

According to Executive Order 13175 - Consultation and Coordination with Indian Tribal Governments (NRC 2009b), NRC is encouraged to "promote government-to-government consultation and coordination with Federally-recognized tribes that have a known or potential interest in existing licensed uranium recovery facilities or applications for new facilities." On November 19, 2010, NRC provided a letter of notification informing 15 tribes that NRC expected to receive an application for the proposed Ross ISR Project. Following the receipt and acceptance of the license application, Strata understands that NRC will meet or communicate with all known Federally-recognized tribes in the area with a potential interest to establish protocol and procedures for government-to-government interaction on the matter. Tribes that have been identified as potentially having concerns about actions in the Powder River Basin include the Assiniboine & Lakota (MT), Blackfeet, Blood (Canada), Crow, Cheyenne River Lakota, Crow Creek Lakota, Devil's Lake Lakota, Eastern Shoshone, Flandreau Santee Dakota, Kootnai & Salish, Lower Brule Lakota, Northern Arapaho, Northern Cheyenne, Oglala Lakota, Pigeon (Canada), Rosebud Lakota, Sisseton-Wahpeton Dakota, Southern Arapaho, Southern Cheyenne, Standing Rock Lakota, Three Affiliated Tribes, Turtle Mountain Chippewa, and Yankton Dakota (NPS 2010).*

**Additional tribes expressing interest have been identified since the submission of the ER and are included in Appendix A.*

Section 1 – General Criteria:

Strata desires to select a Consultant to provide services in accordance with the specifications listed in this RFP. Said Consultant will perform cultural resource studies and prepare cultural resource reports for the proposed Ross ISR project in northeast Wyoming

(Figure 1). Studies will include ethnographic research, records research and interviews with the appropriate Tribal representatives determined through consultation with NRC, preparation of a report on cultural resources found within the areas of potential effects (APE), and may include field research in support of NRC efforts to further identify and evaluate any potential properties of traditional cultural importance. Work performed by the Consultant shall meet the requirements established by the NRC, the Secretary of the Interior's Professional Qualification Standards (48 FR22716, Sept. 1983), WSHPO, and the Advisory Council on Historic Preservation (ACHP).

Section 2 – Services to Be Provided:

Phase I

1. Prepare a written plan detailing how the Consultant proposes to proceed. The plan should detail the team members and/or tribal representatives needed to complete the field work portions of the project. Tribal representatives shall be designated as compensated team members and included accordingly in related cost estimates;
2. Develop a draft outreach plan for initial tribal contact concerning the information-gathering project and develop supporting materials to be included. The supporting materials may include maps of areas to be studied, photographs of what potential ISR development projects would look like, and an animation of how the ISR process works. Information provided should be brief, clear, and nontechnical;
3. Review the written plan and supporting materials with Strata to ensure completeness and accuracy before proceeding;
4. Provide monthly progress updates to Strata throughout the project.

Phase II

1. Conduct background research to identify any potential properties of traditional cultural importance in the APE(s) (through literature review and ethnographic interviews) using as basis the background information collected in the Class I/III Inventory:
 - a. Literature review portion:
 - i. SHPO files, maps and reports (including state context documents) for the States of Wyoming, Montana, North and South Dakota;
 - ii. Published histories and ethnographies of relevant tribes, including traditional beliefs and stories related to specific identifiable places;
 - iii. Tribal archives and records, including maps and lists and studies of place names;
 - iv. Bureau of Indian Affairs and other agency files and data;
 - v. Analyze data and prepare report to guide field work.

- b. Interview portion:
 - i. Develop outreach plan and protocol for initial tribal contact;
 - ii. Conduct interviews according to protocol established in Phase I;
 - iii. Record and transcribe interview data;
 - iv. Analyze data and prepare report to guide field work.
- 2. Develop a brief overview of Native American Tribal use and practices in the APE(s) to serve as basis for identifying potential properties of traditional cultural importance. This overview should consider state context documents and other information on types of traditional cultural properties typically encountered in the region.
- 3. The Consultant will be expected to maintain detailed records of tribal contacts, comments, and concerns throughout the duration of the project.

Phase III

- 1. Work with NRC and WSHPO to evaluate potential properties of traditional cultural importance identified through previous archeological field work, Tribal site visits, literature review and interviews, and determine if there is need for further field work to evaluate said properties;
- 2. If necessary, develop a logistical plan to serve as a guideline for conducting site-specific assessments for properties of traditional cultural importance. At a minimum, this plan should indicate areas to be surveyed, survey method (assume pedestrian), anticipated duration, documentation forms and procedures along with names or titles of Tribal subcontractors or other Tribal participants. This plan will be utilized by Strata to ensure that surface owners are accurately apprised of the activity and will be reviewed by NRC. The plan may be used by NRC in working with Tribal consulting parties to conduct further assessment of said properties.
- 3. Any field work must be completed by mid June 2012 and cannot interrupt current land uses, particularly calving or foaling activities.
- 4. Conduct field work using subcontractors, Strata's archaeologist, and applicable representatives from NRC/WSHPO and from Native American Tribes who express interest in participating;
- 5. Work with NRC/WSHPO to determine whether any identified properties of traditional cultural importance within the study area meet National Register criteria (subject to Section 106 requirements).

Phase IV

1. Prepare a draft report meeting NEPA and NHPA Section 106 requirements for NRC review and revise as needed;
2. Upon identification and evaluation of any potential adverse impacts to a cultural property, prepare a draft management plan for Strata review and revise as needed;
3. Prepare draft segments (if needed) for a Memorandum of Agreement (MOA) between NRC/WSHPO/Strata and other consulting parties documenting Section 106 compliance.

The Consultant will be expected to clearly communicate with Strata at all times regarding the status of the project, and any key developments. The Consultant may also be asked to prepare communications regarding key project developments for distribution among the consulting parties, pending Strata's review and approval.

Additional services may be recommended by the Consultant based on experience for inclusion in this scope of work.

Section 3 - Mandatory Minimum Requirements:

The proposal submitted by the Respondent must meet or exceed the professional, administrative and financial qualifications set forth in this RFP and shall incorporate the information requested below. In addition to the information required as described below, a Respondent may submit supplemental information that it feels may be useful in evaluating its Proposal. Respondents are encouraged to be clear, factual, and concise in their presentation of information.

The Principal Investigator shall meet the professional and experience requirements of Appendix II to National Park Service Bulletin 38 (attached as Appendix B).

Strata reserves the right to hold oral discussions with Consultant(s) of their choice for clarification of a proposal. Strata further reserves the right to request additional information.

Required Proposal Information:

1. The Proposal must contain resumes of key personnel expected to provide services as described in the Proposal;
2. The Proposal must contain the address of the office(s) of Respondent;
3. Respondents must demonstrate to Strata a proven record of advisory services to organizations of similar size and complexity. Include a list of clients where related services are being or have been provided over the last five (5) years. Include contact names, positions, and phone numbers;
4. The Proposal must describe the amount of Professional Liability Insurance maintained (see Section 7, below).
5. The Proposal should describe any other factors the Respondent believes are relevant to its ability to provide Strata with the services described in this RFP.

Section 4 – Schedule:

The Respondent should be familiar with applicable timetables related to the SEIS preparation process. At this point, NRC Staff expects to complete a draft SEIS in late 2012. The services described in this RFP will need to begin as soon as possible following notice to proceed, so that the interviews and records search can be completed by mid-spring, allowing ample time in the late spring or early summer to conduct any necessary fieldwork. Respondent should provide a detailed proposed schedule for the work to be completed hereunder.

Section 5 – Cost Proposal:

Respondent must include the following:

1. A list of applicable hourly rates associated with the personnel who would provide the type of work listed in Section 2 above;
2. A total cost calculation for services applying the above listed hourly rates.
3. An estimate of the monthly expenditures to complete the scope of work.

Section 6 – Insurance and Indemnification:

The Respondent awarded the contract must assume all risks connected with this work. The Respondent awarded the contract shall comply with all State laws and regulations concerning Worker's Compensation and shall maintain such insurance as will protect the Respondent against all claims for damages for personal injury, including death and property damage, which may arise during or as a result of the work done under this Contract, either by the Respondent awarded the contract or by any subcontractor or anyone directly or indirectly employed by either Respondent or subcontractor.

The Respondent awarded the contract shall not commence work under this Contract until all insurance required by this section has been obtained, nor shall the Respondent allow any subcontractor to commence work until all similar insurance required of the subcontractor has been obtained and approved. The Respondent's insurance shall apply to and provide coverage for all subcontractors and/or suppliers unless the Respondent forwards to Strata the Certificate of Insurance for the subcontractor or supplier. Insurance coverage shall remain in effect until all work under the Contract has been accepted by Strata and at all times thereafter when the Respondent may be replacing defective work.

The Respondent and subcontractors may elect to pass along any necessary costs to acquire liability insurance to Strata.

The Respondent awarded the contract shall furnish Strata with proof of insurance by providing a Certificate of Insurance from the authorized agent. The Respondent awarded the contract shall give Strata thirty (30) days written notice of any material change in, cancellation of, or expiration of the policies. Any insurance company providing coverage must be authorized to do business in the State of Wyoming.

The following insurance is required:

1. Professional Liability – Minimum of \$1,000,000 errors and omissions per occurrence;
2. General Liability – Minimum of \$1,000,000 per occurrence based upon the specific work and values involved. Strata shall be named as additional insured with respect to general liability;
3. Worker's Compensation in accordance with the Wyoming Worker's Compensation Act (State Statute 27-14)

Section 7 – Adherence to Strata Access Requirements and Policies:

Consultant must adhere to the following Strata access requirements and policies:

1. Consultant must adhere to Strata's no smoking and zero tolerance drug and alcohol policies while on site.
2. Consultant must go through Strata's designated land access personnel for approved access and must adhere to any and all land access agreement stipulations contained within Strata's land access agreements with landowners.
3. Consultant must adhere to Strata's markings and identification policy while on site.
4. Consultant must adhere to Strata's safety policies while on site.

Section 8 – Indemnification:

The selected individual or firm shall defend, indemnify and hold harmless Strata, its officers, agents, and employees from any and all claims and costs of any nature whether for personal injury, property damage, or other liability arising out of or in any way connected with the individual or firm's acts or provisions under this proposal.

Section 9 – Evaluation:

Strata's objective in soliciting proposals is to enable it to select a Respondent that will provide high quality and cost effective services to Strata. Strata will consider proposals only from Respondents that, in Strata's sole judgment, have demonstrated the capability and willingness to provide high quality services to Strata in the manner described in this RFP.

Proposals will be evaluated by Strata on the basis of which proposal is the most advantageous, including price and other factors considered. The evaluation will consider:

1. Completeness of the proposal;
2. Ability to complete the work in a professional manner and within the timeframe indicated;
3. Experience and knowledge of the subject;
4. Cost proposal.

The following questions will be used to assist in the evaluation:

1. Technical Criteria:
 - a. Does the Respondent's Proposal demonstrate a clear understanding of the scope of work and related objectives?
 - b. Is the Proposal complete and responsive to the specific RFP requirements?
2. Management Criteria:
 - a. History and experience in performing the work:
 - i. Does the Respondent document a record of reliability of timely delivery and on-time and on-budget implementation?
 - ii. Does the Respondent demonstrate a track record of service as evidenced by on-time, on-budget, and contract-compliant performance?
 - iii. Does the Respondent have a record of professional integrity?
 - b. Availability of personnel, facilities, equipment and other resources:
 - i. Are the available resources of the Respondent sufficient to meet the needs of Strata?
 - ii. To what extent does the Respondent rely on in-house resources v. contracted resources?
 - iii. Is the availability of in-house and contract resources documented?
3. Cost Criteria:
 - a. Cost of goods to be provided or services to be performed:
 - i. Relative cost: How does the cost compare to other similarly scored proposals?
 - ii. Full explanation: Is the price and its component charges, fees, etc. adequately explained or documented?

Strata shall not be obligated to explain the results of the evaluation process to any Respondent.

Section 10 – Proposal Submittal:

Interested respondents may submit proposals electronically in pdf form via email to: mike@stratawyo.com.

Proposals may also be submitted by mail. Respondents submitting via mail shall submit one (1) original and four (4) copies of their proposal to:

Mike Butcher
Chief Financial Officer
Strata Energy, Inc.
406 W. 4th Street
PO Box 2318
Gillette, Wyoming 82717

Proposals will be accepted until the close of business (5:00 p.m. MST) Friday, March 9, 2012. Proposals received after that time shall not be considered.

December 6, 2011

Mr. Mal James, President
Strata Energy, Inc.
P.O. Box 2318
406 West 4th Street
Gillette, WY 82717

SUBJECT: INFORMATION REQUIRED BY THE U.S NUCLEAR REGULATORY
COMMISSION STAFF TO SATISFY ITS OBLIGATIONS UNDER SECTION 106
OF THE NATIONAL HISTORIC PRESERVATION ACT AND NATIONAL
ENVIRONMENTAL POLICY ACT TO COMPLETE ITS REVIEW OF THE
IMPACTS TO THE CULTURAL RESOURCES FROM THE PROPOSED
ROSS PROJECT

Dear Mr. James:

The U.S. Nuclear Regulatory Commission (NRC) has received an application from Strata Energy, Inc. (Strata) for a new source and 11e(2) byproduct material license to permit Strata to operate the proposed Ross uranium *In-Situ* recovery (ISR) facility. As part of our responsibilities under the National Environmental Policy Act (NEPA), the NRC is conducting an environmental review of Strata's application. In addition to our NEPA review, the NRC must comply with the National Historic Preservation Act (NHPA). Under Section 106 of the NHPA and its implementing regulations (36 CFR Part 800), the NRC must take into account the effects that issuing a license to Strata would have on historic properties and afford the Advisory Council on Historic Preservation (ACHP) a reasonable opportunity to comment on the NRC's findings.

In order to comply with NEPA and Section 106 of the NHPA, the NRC must make a reasonable and good faith effort to identify historic properties within the area of potential effect (APE) for the proposed Ross ISR facility. Historic properties include properties of traditional religious and cultural importance to one or more Indian Tribes. Based on information gathered during two meetings (September and November 2011) between the NRC and representatives from seven Indian Tribes and consultation with the Wyoming State Historic Preservation Officer (SHPO), the NRC staff has determined that, beyond the archaeological surveys already submitted by Strata, the staff needs additional information regarding properties which may be of religious and cultural significance to Indian Tribes. The NRC staff believes that a traditional cultural property (TCP) survey of the APE would be an effective method to identify these properties. Such a survey could include site visits by tribal representatives, analysis of potential properties by tribal representatives, and ethnographic interviews of tribal representatives.

The NRC requests that Strata submit a written proposal for acquiring information on TCPs. Upon receipt of this proposal, the NRC staff will determine whether the actions outlined in the proposal will provide information sufficient for the NRC to meet applicable requirements under NEPA and the NHPA.

M. James

2

Indian Tribes that are associated with Devils Tower, as well as those that have expressed interest in a traditional cultural properties survey as expressed during the two site walkovers and subsequent consultations, are receiving a copy of this letter.

Please submit your proposal to NRC, Attention: Mr. Kevin Hsueh, Mail Stop T-8F5, Washington, DC 20555. If you have any questions or comments, or need additional information, please contact Mr. Alan Bjornsen of my staff by telephone at 301-415-1195, or by e-mail at Alan.Bjornsen@nrc.gov.

Sincerely,

/RA/

Kevin Hsueh, Branch Chief
Environmental Review Branch
Environmental Protection and Performance
Assessment Directorate
Division of Waste Management
and Environmental Protection
Office of Federal and State Materials
and Environmental Management Programs

Docket No.: 40-9091

cc: See next page

M. James

2

Indian Tribes that are associated with Devils Tower, as well as those that have expressed interest in a traditional cultural properties survey as expressed during the two site walkovers and subsequent consultations, are receiving a copy of this letter.

Please submit your proposal to NRC, Attention: Mr. Kevin Hsueh, Mail Stop T-8F5, Washington, DC 20555. If you have any questions or comments, or need additional information, please contact Mr. Alan Bjornsen of my staff by telephone at 301-415-1195, or by e-mail at Alan.Bjornsen@nrc.gov.

Sincerely,

Kevin Hsueh, Branch Chief
 Environmental Review Branch
 Environmental Protection and Performance
 Assessment Directorate
 Division of Waste Management
 and Environmental Protection
 Office of Federal and State Materials
 and Environmental Management Programs

Docket No.: 40-9091

cc: See next page

Distribution: JSaxton CSafford BVonTill

ML113200121

OFC	DWMEP	DWMEP	DWMEP	OGC	DWMEP
NAME	ABjornsen	JDavis	AWalker-Smith	MBarkman-Marsh via email	KHsueh
DATE	11/28/11	11/28/11	12/02/11	12/02/11	12/06/11

OFFICIAL RECORD COPY

cc:

Mr. James A. Bashor
Geologist
Bureau of Land Management
Newcastle Field Office
1101 Washington Boulevard
Newcastle, WY 82701

Ms. Mary M. Hopkins
State Historic Preservation Officer
2301 Central Avenue
Cheyenne, WY 82002

Ms. Dorothy FireCloud
Superintendent
Devils Tower National Monument
P.O. Box 10
Devils Tower, WY 82714

Mr. John Yellow Bird Steele, President
Oglala Sioux Tribe
P.O. Box 2070
Pine Ridge, SD 57770

Wilmer Mesteth
Tribal Historical Preservation Officer
Oglala Sioux Tribe
P.O. Box 320
Pine Ridge, SD 57770-320

Mr. Rodney Bordeaux, Chairman
Rosebud Sioux Tribe
P.O. Box 430
Rosebud, SD 57570-0430

Mr. Russell Eagle Bear
Tribal Historical Preservation Officer
Rosebud Sioux Tribe
P.O. Box 658
Rosebud, SD 57570-0658

Mr. Michael Jandreau, Chairman
Lower Brule Sioux Tribe
P.O. Box 187
Lower Brule, SD 57548-0817

Ms. Clair Green
Tribal Historic Preservation Officer
Lower Brule Sioux Tribe
P.O. Box 187
Lower Brule, SD 57548-0817

Mr. Kevin Keckler, Chairman
Cheyenne River Sioux Tribe
P.O. Box 590
Eagle Butte, SD 57625-0590

Mr. Steve Vance
Tribal Historic Preservation Officer
Cheyenne River Sioux Tribe
P.O. Box 590
Eagle Butte, SD 57625-0590

Mr. Duane Big Eagle, Chairman
Crow Creek Sioux Tribe
P. O. Box 50
Ft. Thompson, SD 57339-0050

Ms. Wanda Wells
Tribal Historic Preservation Officer
Crow Creek Sioux Tribe
P. O. Box 50
Ft. Thompson, SD 57339-0050

Mr. Anthony Reider, Chairman
Flandreau-Santee Sioux Tribe
P.O. Box 283
Flandreau, SD 57028-0283

Mr. J.B. Weston
Tribal Historic Preservation Officer
Flandreau-Santee Sioux Tribe
P.O. Box 283
Flandreau, SD 57028-0283

Mr. Robert Shepherd, Chairman
Sisseton-Wahpeton Oyate
P.O. Box 509
Agency Village, SD 57262-0509

Ms. Dianne Desrosiers
Tribal Historic Preservation Officer
Sisseton-Wahpeton Oyate
P.O. Box 907
Sisseton, SD 57262-0907

Mr. Robert Cournoyer, Chairman
Yankton Sioux Tribe
P.O. Box 248
Marty, SD 57361-0248

Ms. Lana Gravatt
Tribal Historic Preservation Officer
Yankton Sioux Tribe
P.O. Box 248
Marty, SD 57361-0248

Mr. Cedric Black Eagle, Chairman
Crow Tribe of Montana
Baacheeitché Ave
P.O. Box 159
Crow Agency, MT 59022

Mr. Dale Old Horn
Tribal Historic Preservation Officer
Crow Tribe of Montana
Baacheeitché Ave
P.O. Box 159
Crow Agency, MT 59022

Mr. A. T. Rusty Stafne, Chairman
Fort Peck Tribe
P.O. Box 1027
Poplar, MT 59255-1927

Mr. Darrell Curley Youpee
Tribal Historic Preservation Officer
Fort Peck Tribes
P.O. Box 836
Poplar, MT 59255-0836

Mr. Leroy Spang, Tribal President
Northern Cheyenne Tribe
Tribal Historic Preservation Office
P.O. Box 128
Lame Deer, MT 59043-0128

Mr. Conrad Fisher,
Tribal Historic Preservation Officer
Northern Cheyenne Tribe
Tribal Historic Preservation Office
P.O. Box 128
Lame Deer, MT 59043-0128

Mr. Charles. W. Murphy, Chairman
Standing Rock Sioux Tribe
P.O. Box D
Ft. Yates, ND 58538-0522

Ms. Waste' Win Young
Tribal Historic Preservation Officer
Standing Rock Sioux Tribe
P.O. Box D
Ft. Yates, ND 58538-0522

Ms. Myra Pearson, Chairperson
Spirit Lake Tribe
P.O. Box 359
Fort Totten, ND 58335-0359

Mr. Marty Alex, THPO
Tribal Historic Preservation Officer
Spirit Lake Tribe
P.O. Box 359
Fort Totten, ND 58335-0359

Mr. Roger Trudell, Chairman
Santee Sioux Tribes of Nebraska
108 Spirit Lake Avenue West
Niobrara, NE 68760-7219

Mr. Rick Thomas
Tribal Historic Preservation Officer
Santee Sioux Tribe of Nebraska
529 48 Hwy 12
Niobrara, NE 68760

Mr. Ivan Posey, Chairman
Eastern Shoshone Tribe
P. O. Box 538
Fort Washakie, WY 82514

Mr. Wilfred Ferris
Tribal Historic Preservation Officer
Eastern Shoshone Tribe
P. O. Box 538
Fort Washakie, WY 82514

Kim Harjo, Chairman
Northern Arapaho Tribe
Tribal Historic Preservation Office
P.O. Box 396
Fort Washakie, WY 82514

Ms. Darlene Conrad
Northern Arapaho Tribe
Tribal Historic Preservation Office
P.O. Box 396
Fort Washakie, WY 82514

Ross Project Section 106 Consulting
Parties

Federal Agencies

NRC – Lead Agency
 BLM – Cooperating Agency
 NPS (DETO) – Commenting Agency

Applicant for Federal License

Strata Energy Inc.

State Historic Preservation Officer

Mary Hopkins, WSHPO
 Richard Currit, Senior Archeologist

Indian Tribes

BLACKFEET TRIBAL BUSINESS COUNCIL
 CHAIRMAN – **Willie A. Sharp, Jr.**
John Murray (THPO)
 P.O. BOX 850
 BROWNING, MT 59417
 406/338-7522 (ofc) 406-338-7530 (fax)
 John.murray@blackfeetplanning.org
 DETO AFFILIATION: **YES**

CHEYENNE AND ARAPAHOE TRIBES OF
 OKLAHOMA
 GOVERNOR – **Janice Prairie Chief Boswell**
Lynette Gray (THPO)
 P.O. BOX 38
 CONCHO, OK 73002
 405/411-7622 (ofc) 405/422-1199 (fax)
 lgray@c-a-tribes.org
 DETO AFFILIATION: **YES**

CHEYENNE RIVER LAKOTA TRIBAL
 COUNCIL
 CHAIRMAN – **Kevin Keckler**
Steve Vance (THPO)
 P.O. BOX 590
 EAGLE BUTTE, SD 57625
 605/964-7554 (ofc) 605/964-7552 (fax)
 steve.vance@cheyenneriversiouxtribe-nsn.gov
 DETO AFFILIATION: **YES**

CHIPPEWA CREE
 CHAIRMAN – **Bruce SunChild, Sr.**
Alvin Windy Boy, Sr. (THPO)
 RR1, P.O. Box 544
 Box Elder, MT 59521
 406-395-4282 (ofc) 406-395-4382 (fax)
 awindyboy@earthlink.net
 DETO AFFILIATION: **NO**

CONFEDERATED SALISH AND KOOTENAI
 Chairman - **E. T. Bud Moran**
Francis Auld (THPO)
 Confederated Salish & Kootenai Tribe
 P.O. Box 278
 Pablo, MT 59855
 Phone: (406) 675-2700
 Fax: (406) 675-2629
 francisa@cskt.org

CROW CREEK SIOUX TRIBAL COUNCIL
 CHAIRMAN – **Duane Big Eagle**
Wanda Wells (THPO)
 P.O. BOX 50
 FORT THOMPSON, SD 57339
 605/245-2250 (ofc) 605/245-2470 (fax)
 wandawells@midstatesd.net
 DETO AFFILIATION: **YES**

CROW TRIBAL COUNCIL
 CHAIRMAN – **Cedric Black Eagle**
Hubert Two Leggings (THPO)
 Baacheeitch Avenue
 P.O. BOX 169
 CROW AGENCY, MT 59022
 406/638-3126 (ofc) 406/638-3881 (fax)
 daleoh@crownations.net
 DETO AFFILIATION: **YES**

FLANDREAU SANTEE LAKOTA EXECUTIVE
 COMMITTEE
 PRESIDENT – **Anthony Reider**
J.B. Weston (THPO)
 P.O. BOX 283
 FLANDREAU, SD 57028
 605/997-3829 (ofc) 605/997-3878 (fax)
 Jb.weston@fsst.org
 DETO AFFILIATION: **YES**

FORT BELKNAP COMMUNITY COUNCIL
 PRESIDENT- **Tracy King**
Morris E. Belgarde (THPO)
 RR1 BOX 66
 HARLEM, MT 59526
 406/353-8433 (ofc) 406/353-2797 (fax)
 mbelgarde@yahoo.com
 DETO AFFILIATION: **YES**

FORT PECK TRIBAL EXECUTIVE BOARD
 CHAIRMAN – **AT Rusty Stafne**
Darrell “Curley” Youpee (THPO)
 P.O. BOX 1027
 POPLAR, MT 59255
 406-768-2382 (ofc) 406/768-3084 (fax)
 cultres@nemontel.net
 DETO AFFILIATION: **YES**

KIOWA INDIAN TRIBE OF OKLAHOMA
 CHAIRMAN – **Ronald “Dawes” Twohatchet**
Jamie Eskew (THPO)
 P.O. BOX 369
 CARNEGIE, OK 73015
 580/654-2300 (ofc) 580/654-2188 (fax)
 mrseskew@yahoo.com
 DETO AFFILIATION: **YES**

LOWER BRULE LAKOTA TRIBAL COUNCIL
 CHAIRMAN – **Michael Jandreau**
Clair Green (THPO)
 187 OYATE CIRCLE
 LOWER BRULE, SD 57548
 605/473-5561x366 (ofc) 605/473-5606 (fax)
 (605) 730-1935 (cell)
 clairsgreen@yahoo.com
 DETO AFFILIATION: **YES**

ARAPAHO BUSINESS COUNCIL
 CHAIRMAN – **Jim Shakespeare**
Darlene Conrad (THPO)
 P.O. BOX 396
 FORT WASHAKIE, WY 82514
 307/856-1628 (ofc) 307/856-1826 (fax)
 Narapahothpo_2009@ymail.com
 DETO AFFILIATION: **YES**

NORTHERN CHEYENNE TRIBAL COUNCIL
 CHAIRWOMAN– **Leroy Spang**
Conrad Fisher (THPO)
 P.O. BOX 128
 LAME DEER, MT 59043
 406/477-6284x165 (ofc) 406/477-6210 (fax)
 Conrad.fisher@cheyennenation.com
 DETO AFFILIATION: **YES**

OGLALA LAKOTA TRIBAL COUNCIL
 PRESIDENT – **John Yellow Bird Steele**
Wilmer Mesteth (THPO)
 P.O. BOX 2070
 PINE RIDGE, SD 57770
 605/867-5969 (ofc) 605/867-2818(fax)
 ostnrrathpo@gwtc.net
 DETO AFFILIATION: **YES**

ROSEBUD SIOUX TRIBAL COUNCIL
 PRESIDENT – **Rodney Bordeaux**
Russell Eagle Bear (THPO)
 P.O. BOX 430
 ROSEBUD, SD 57570
 605/747-4255 (ofc) 605/747-4211 (fax)
 605-441-9884
 reaglebear@yahoo.com
 DETO AFFILIATION: **YES**

SANTEE SIOUX NATION
 Chairman – **Roger Trudell**
Richard Thomas (THPO)
 108 Spirit Lake Avenue West
 Niobrara, NE 68760-7219
 (402) 857-3346 (ofc) (402) 857-2862
 Rick_thpo02@yahoo.com
 DETO AFFILIATION: ?

SHOSHONE BUSINESS COUNCIL
 CHAIRMAN – **Mike LaJeunesse**
Wilfred Ferris (THPO)
 P.O. BOX 538
 FORT WASHAKIE, WY 82514
 307/335-2081 (ofc)
 wjferrisiii@yahoo.com
 307/332-3055 (fax)
 DETO AFFILIATION: **YES**

SISSETON-WAHPETON LAKOTA

CHAIRMAN – **Robert Shepherd****Dianne Desrosiers (THPO)**

P.O. BOX 509

AGENCY VILLAGE, SD 57262

605/698-3584 (ofc) 605/698-4283 (fax)

dyandancer@yahoo.com

DETO AFFILIATION: **YES**

SPIRIT LAKE TRIBAL COUNCIL

CHAIRPERSON – **Myra Pearson****Darrel Smith (THPO)**

P.O. BOX 359

FORT TOTTEN, ND 58335

701/766-4221 (ofc) 701/766-4126 (fax)

dsmith@spiritlakenation.com

DETO AFFILIATION: **YES**

STANDING ROCK LAKOTA TRIBAL COUNCIL

CHAIRMAN – **Charles W. Murphy****Waste' Win Young (THPO)**

P.O. BOX D

FORT YATES, ND 58538

701/854-2120 (ofc) 701/854-2138 (fax)

wyoung@standingrock.org

DETO AFFILIATION: **YES**

THREE AFFILIATED TRIBES

BUSINESS COUNCIL

CHAIRMAN – **Tex Hall****Elgin Crows Breast (THPO)**

404 Frontage Road

NEW TOWN, ND 58763

701/862-2474 (ofc) 701/862-2490 (fax)

(701) 421-8400 (cell)

redhawk@mhanation.com

DETO AFFILIATION: **YES**

YANKTON LAKOTA TRIBE

BUSINESS AND CLAIMS

CHAIRPERSON – **Robert Cournoyer****Lana Gravatt (THPO)**

P.O. BOX 248

MARTY, SD 57361-0248

605/384-3641 (ofc) 605/384-5687 (fax)

gravattlana@yahoo.com

DETO AFFILIATION: **YES**

IX. APPENDIX II

PROFESSIONAL

QUALIFICATIONS:

ETHNOGRAPHY

When seeking assistance in the identification, evaluation, and management of traditional cultural properties, agencies should normally seek out specialists with ethnographic research training, typically including, but not necessarily limited to:

I. Language skills: it is usually extremely important to talk in their own language with those who may ascribe value to traditional cultural properties. While ethnographic fieldwork can be done through interpreters, ability in the local language is always preferable.

II. Interview skills, for example:

- The ability to approach a potential informant in his or her own cultural environment, explain and if necessary defend one's research, conduct an interview and minimize disruption, elicit required information, and disengage from the interview in an appropriate manner so that further interviews are welcome; and
- The ability to create and conduct those types of interviews that are appropriate to the study being carried out, ensuring that the questions asked are meaningful to those being interviewed, and that answers are correctly understood through the use of such techniques as translating and back-translating. Types of interviews normally carried out by ethnographers, one or more of which may be appropriate during evaluation and documentation of a traditional cultural property, include:
 - semi-structured interview on a broad topic;
 - semi-structured interview on a narrow topic;
 - structured interview on a well defined specific topic; open ended life history /life cycle interview; and
 - genealogical interview.

III. Skill in making and accurately recording direct observations of human behavior, typically including:

- The ability to observe and record individual and group behavior in such a way as to discern meaningful patterns; and
- The ability to observe and record the physical environment in which behavior takes place, via photography, mapmaking, and written description.

IV. Skill in recording, coding, and retrieving pertinent data derived from analysis of textural materials, archives, direct observation, and interviews.

Proficiency in such skills is usually obtained through graduate and post-graduate training and supervised experience in cultural anthropology and related disciplines, such as folklore/folklife.

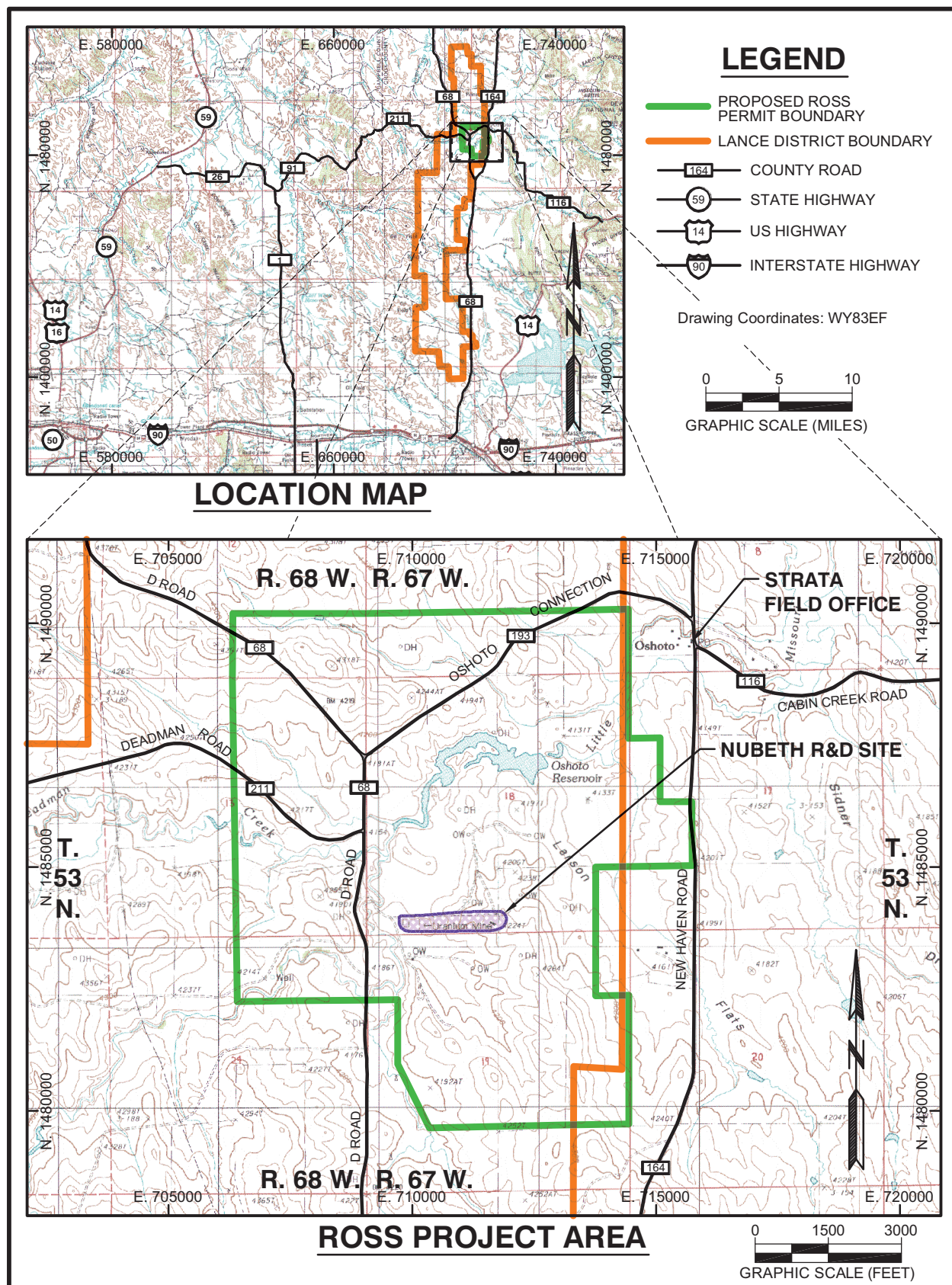


Figure 1. Proposed Project Area