

	7	6	5	4	3	2	1
E							
	TABLE 1: ANNUNCIATORS/ALARM LIGHTS			TABLE 1: ANNUNCIATORS/ALARM LIGHTS (CONT'D)			
	INDICATION	FUNCTION	SOURCE OF SIGNAL	INDICATION	FUNCTION	SOURCE OF SIGNAL	
	ALARM	LOW REACTOR WATER LEVEL 1.5	LOGIC OUTPUT	ALARM	HPCF LOOP B LOW CST WATER LEVEL	LOGIC OUTPUT	
	ALARM	HIGH DRYWELL PRESSURE	LOGIC OUTPUT	ALARM	HPCF LOOP B HIGH SUPPR POOL WATER LEVEL	LOGIC OUTPUT	
	ALARM	HPCF PUMP MOTOR OVERLOAD LOOP B	M/C HPCF PUMP B POWER FAILURE	ALARM	HPCF LOOP C LOW CST WATER LEVEL	LOGIC OUTPUT	
D	ALARM	HPCF PUMP MOTOR OVERLOAD LOOP C	M/C HPCF PUMP C POWER FAILURE	ALARM	HPCF LOOP C HIGH SUPPR POOL WATER LEVEL	LOGIC OUTPUT	
	ALARM	OVERLOAD ANY HPCF VLV MOTOR LOOP B	MOTOR CONTROL CENTER	WHITE LIGHT	HPCF LOOP B HIGH REACTOR WATER LEVEL 8 SEALED-IN	LOGIC OUTPUT	
	ALARM	OVERLOAD ANY HPCF VLV MOTOR LOOP C	MOTOR CONTROL CENTER	WHITE LIGHT	HPCF LOOP C HIGH REACTOR WATER LEVEL 8 SEALED-IN	LOGIC OUTPUT	
	ALARM	HPCF LOOP B MANUAL INITIATION ARMED	PBS	ALARM	HPCF LOOP B PUMP CONTROL SW IN PULL LOCK	PULL LOCK	
	ALARM	HPCF LOOP C MANUAL INITIATION ARMED	PBS	ALARM	HPCF LOOP C PUMP CONTROL SW IN PULL LOCK	PULL LOCK	
	ALARM	HIGH REACTOR WATER LEVEL 8	LOGIC OUTPUT	ALARM	HPCF LOOP B LOSS OF LOGIC POWER SOURCE	LOGIC OUTPUT	
	ALARM	HPCF LOOP B INITIATED	LOGIC OUTPUT	ALARM	HPCF LOOP C LOSS OF LOGIC POWER SOURCE	LOGIC OUTPUT	
	ALARM	HPCF LOOP C AUTO INITIATION	LOGIC OUTPUT	ALARM	HPCF LOOP B TESTING	CS	
C	ALARM	HPCF LOOP B OUT OF SERVICE	LOGIC OUTPUT, COS	ALARM	HPCF LOOP C TESTING	CS	
	ALARM	HPCF LOOP C OUT OF SERVICE	LOGIC OUTPUT, COS	ALARM	HPCF PUMP B TRIP	LOGIC OUTPUT	
	ALARM	HPCF PUMP B LOW-LOW SUCTION PRESSURE	PSZ603B	ALARM	HPCF PUMP C TRIP	LOGIC OUTPUT	
	ALARM	HPCF PUMP C LOW-LOW SUCTION PRESSURE	PSZ603C (NOT HARDWIRED)	ALARM	EMERGENCY CONTAINMENT FLOODING-CST/SP SUCTION TRANSFER OVERRIDE LOOP B	KOS	
	ALARM	HPCF PUMP B DISCHARGE LINE NOT FILLED	PSZ602B-2	ALARM	EMERGENCY CONTAINMENT FLOODING-CST/SP SUCTION TRANSFER OVERRIDE LOOP C	KOS	
	ALARM	HPCF PUMP B HIGH SUCTION PRESSURE	PSZ602B-1	ALARM	MCC EQUIPMENT IN TEST MODE (THERMAL RELAY NOT BYPASSED) FOR LOOP B	KOS	
	ALARM	HPCF PUMP C DISCHARGE LINE NOT FILLED	PSZ602C-2	ALARM	MCC EQUIPMENT IN TEST MODE (THERMAL RELAY NOT BYPASSED) FOR LOOP C	KOS	
	ALARM	HPCF PUMP C HIGH SUCTION PRESSURE	PSZ602C-1	ALARM	HPCF LOOP B FLOW LOW	FIS-Z608B, PS-Z607B	
	WHITE LIGHT	HPCF PUMP B MANUAL OVERRIDE	LOGIC OUTPUT, CS	ALARM	HPCF LOOP C FLOW LOW	FIS-Z608C, PS-Z607C	
	WHITE LIGHT	HPCF PUMP C MANUAL OVERRIDE OF AUTO INITIATION	LOGIC OUTPUT, CS				
B	WHITE LIGHT	HPCF INJECTION VALVE F003B MANUAL OVERRIDE	LOGIC OUTPUT, CS				
	WHITE LIGHT	HPCF INJECTION VALVE F003C MANUAL OVERRIDE OF AUTO INITIATION	LOGIC OUTPUT, CS				
	WHITE LIGHT	HPCF LOOP B INITIATION SEALED-IN	LOGIC OUTPUT				
	WHITE LIGHT	HPCF LOOP C AUTO INITIATION SEALED-IN	LOGIC OUTPUT				
	ALARM	HPCF C MANUAL INITIATION (DIVERSE)	LOGIC OUTPUT (DIVERSE)				
	ALARM	HPCF C PUMP C LOW-LOW SUCTION PRESSURE	PS603C (HARDWIRED)				
	WHITE LIGHT	HPCF C MANUAL INITIATION SEALED-IN	LOGIC OUTPUT				
A	WHITE LIGHT	HPCF C INJECTION VALVE F003C MANUAL OVERRIDE OF (DIVERSE) MANUAL INITIATION	LOGIC OUTPUT, CS (DIVERSE)				

Figure 7.3-1 – High Pressure Core Flooder System IBD (Sheet 2 of 17)

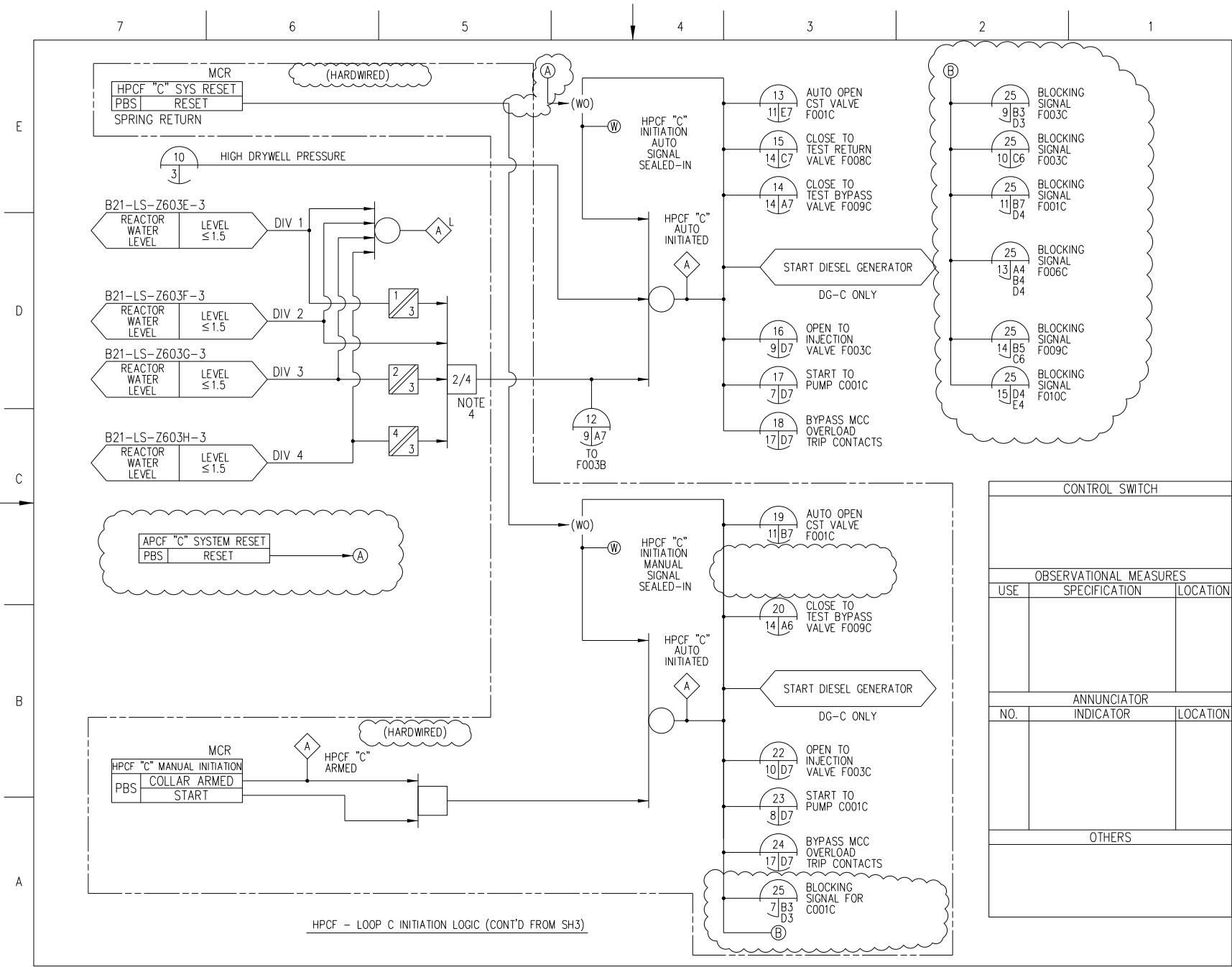
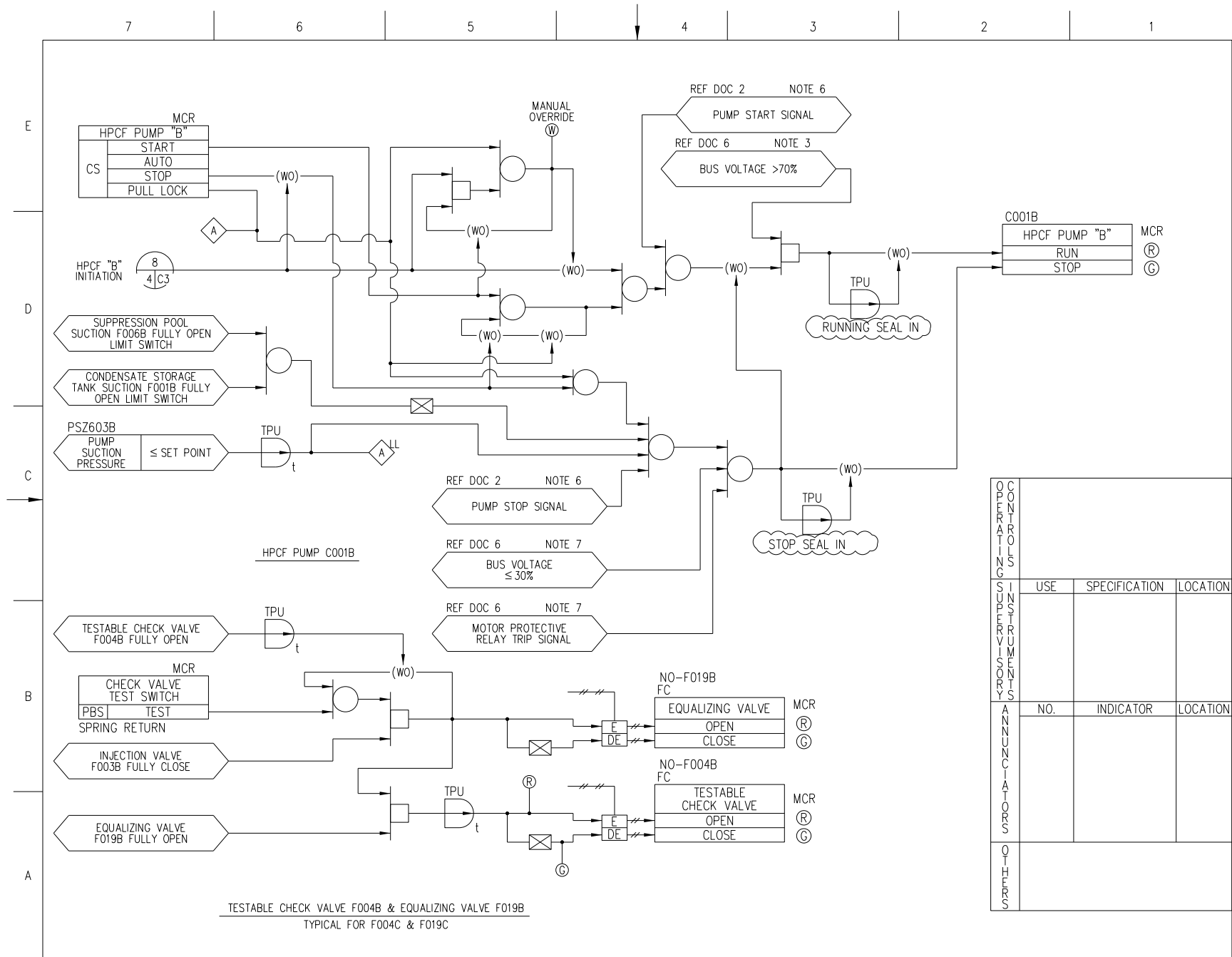


Figure 7.3-1 High Pressure Core Flooder System IBD (Sheet 5 of 17)



**Figure 7.3-1 – High Pressure Core Flooder System IBD (Sheet 6 of 17)**

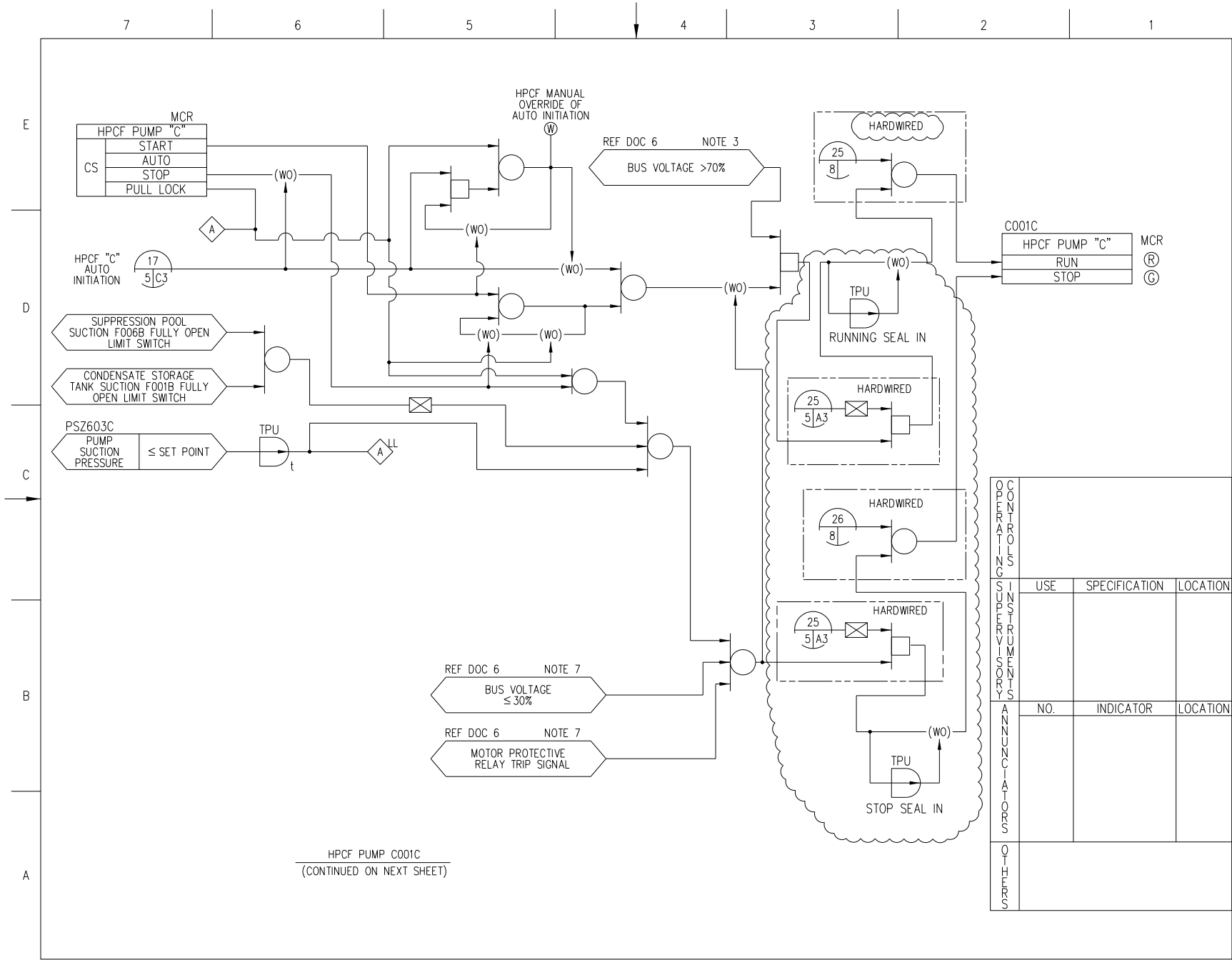


Figure 7.3-1 – High Pressure Core Flooder System IBD (Sheet 7 of 17)

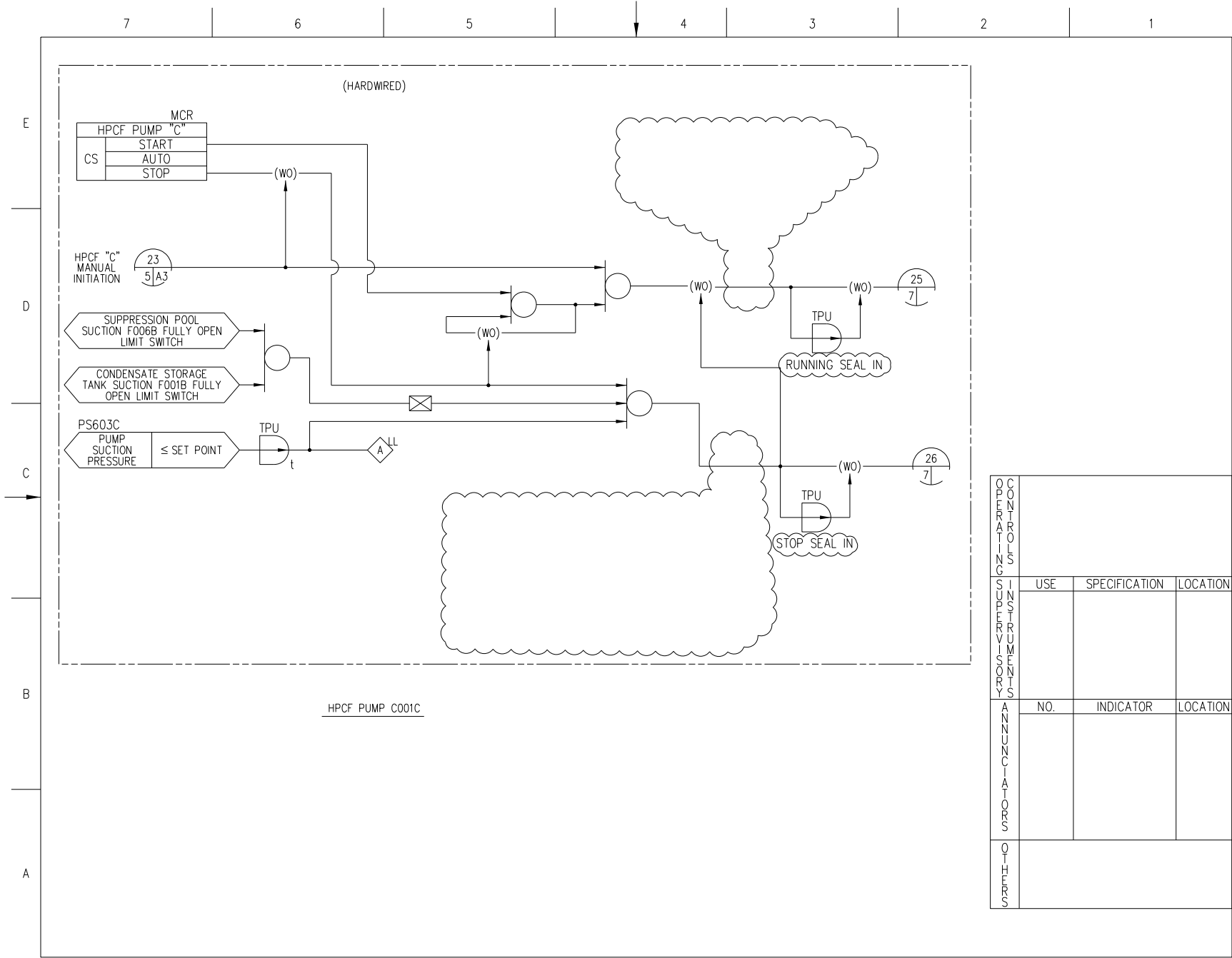
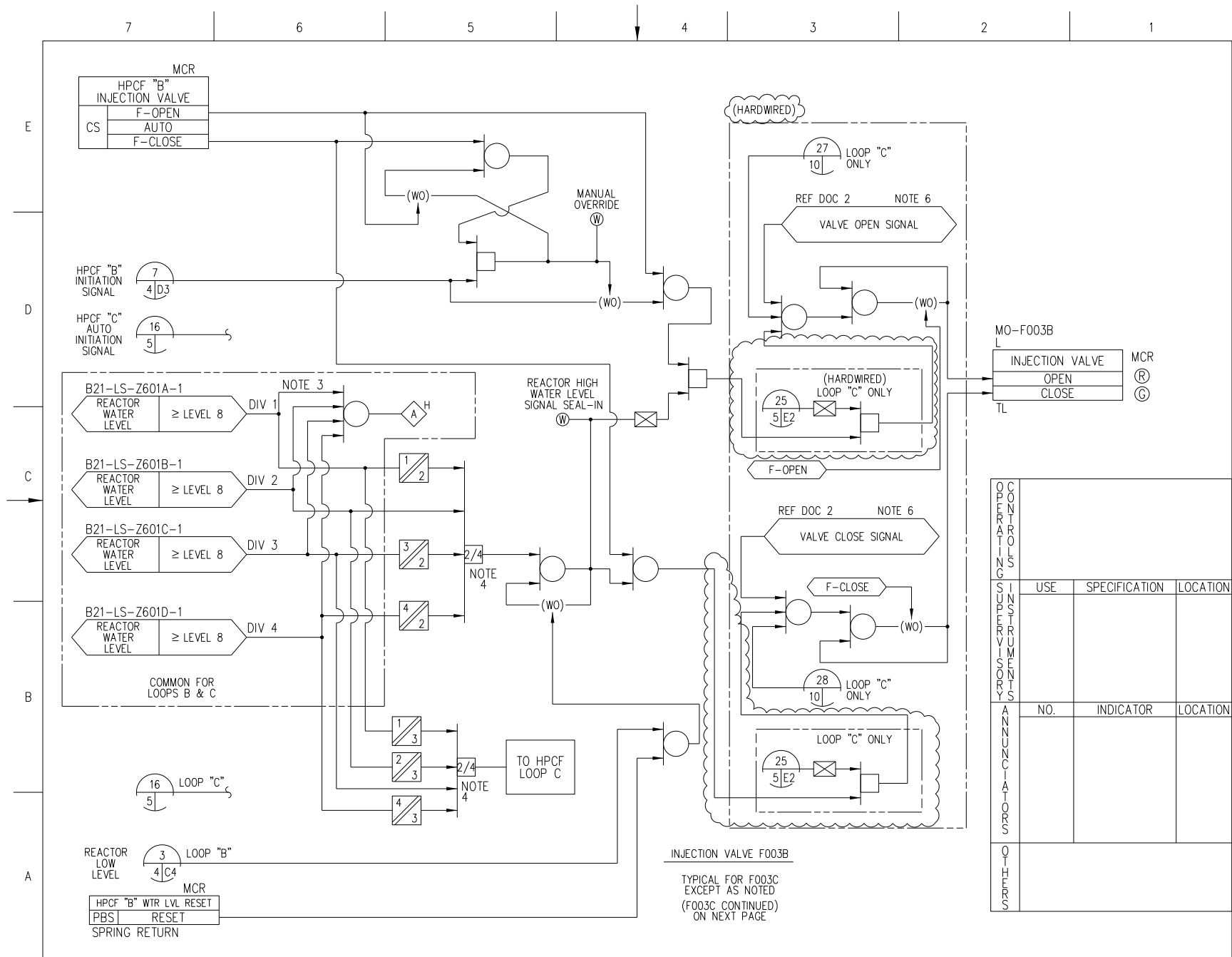
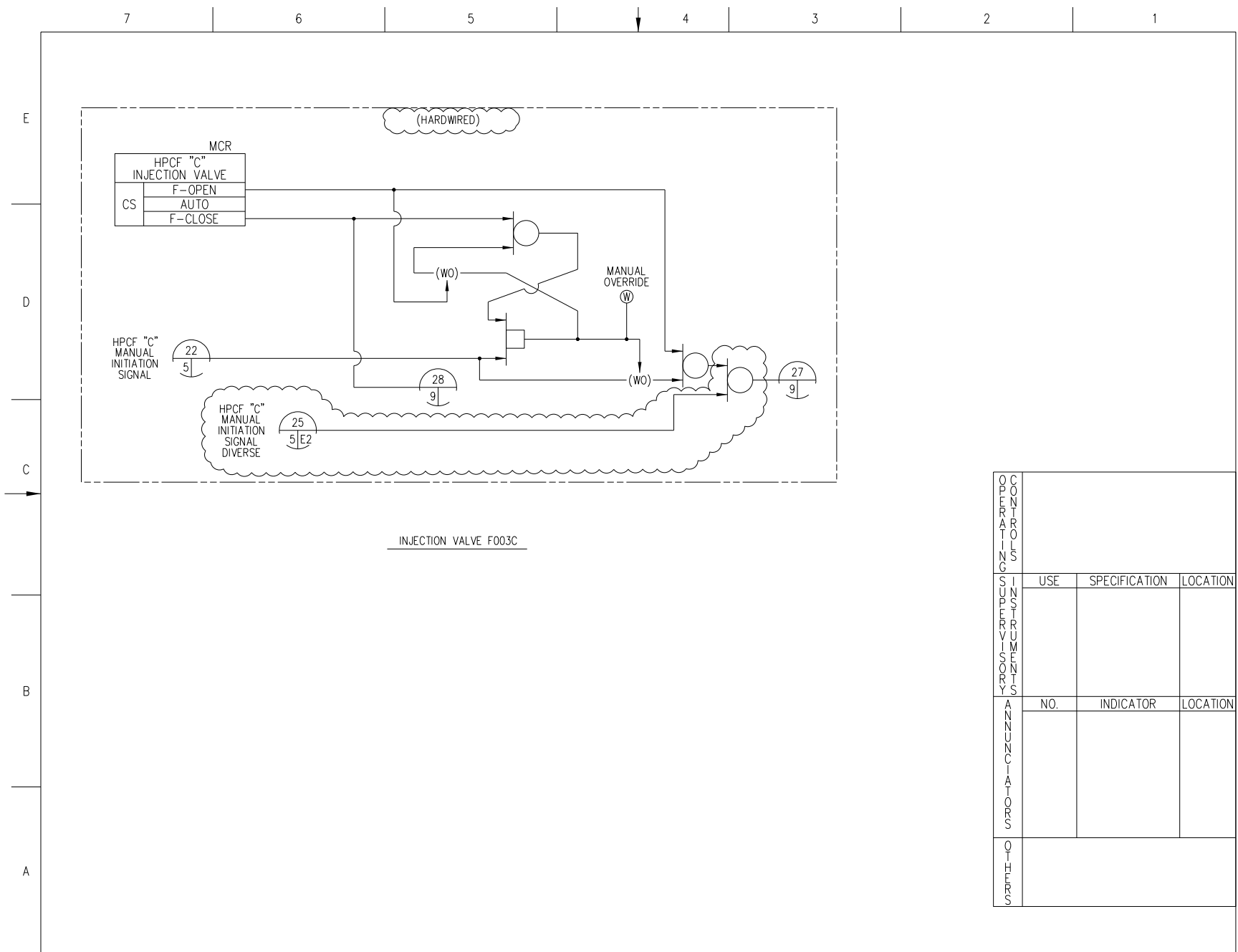


Figure 7.3-1 – High Pressure Core Flooder System IBD (Sheet 8 of 17)



**Figure 7.3-1 – High Pressure Core Flooder System IBD (Sheet 9 of 17)**



**Figure 7.3-1 – High Pressure Core Flooder System IBD (Sheet 10 of 17)**

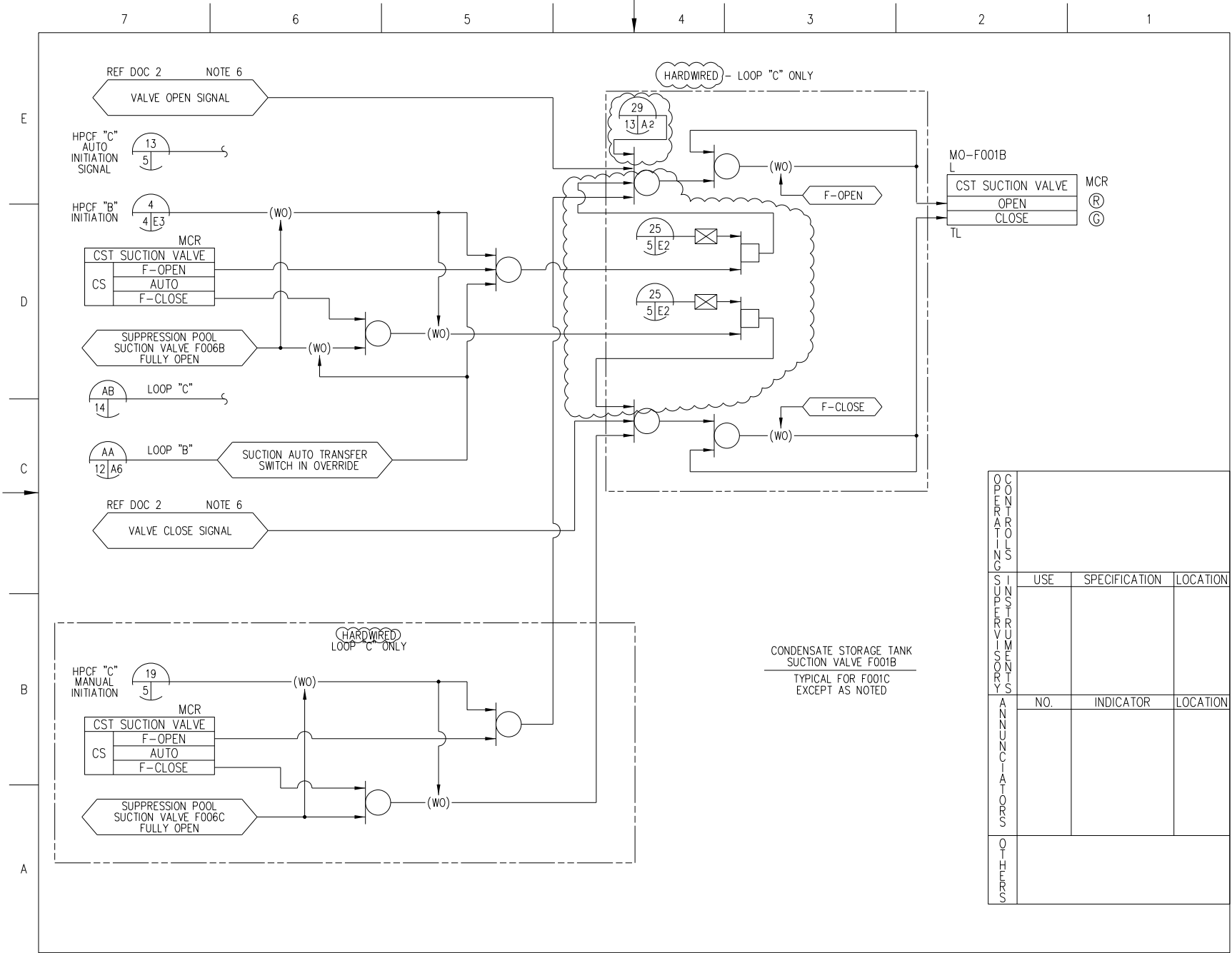
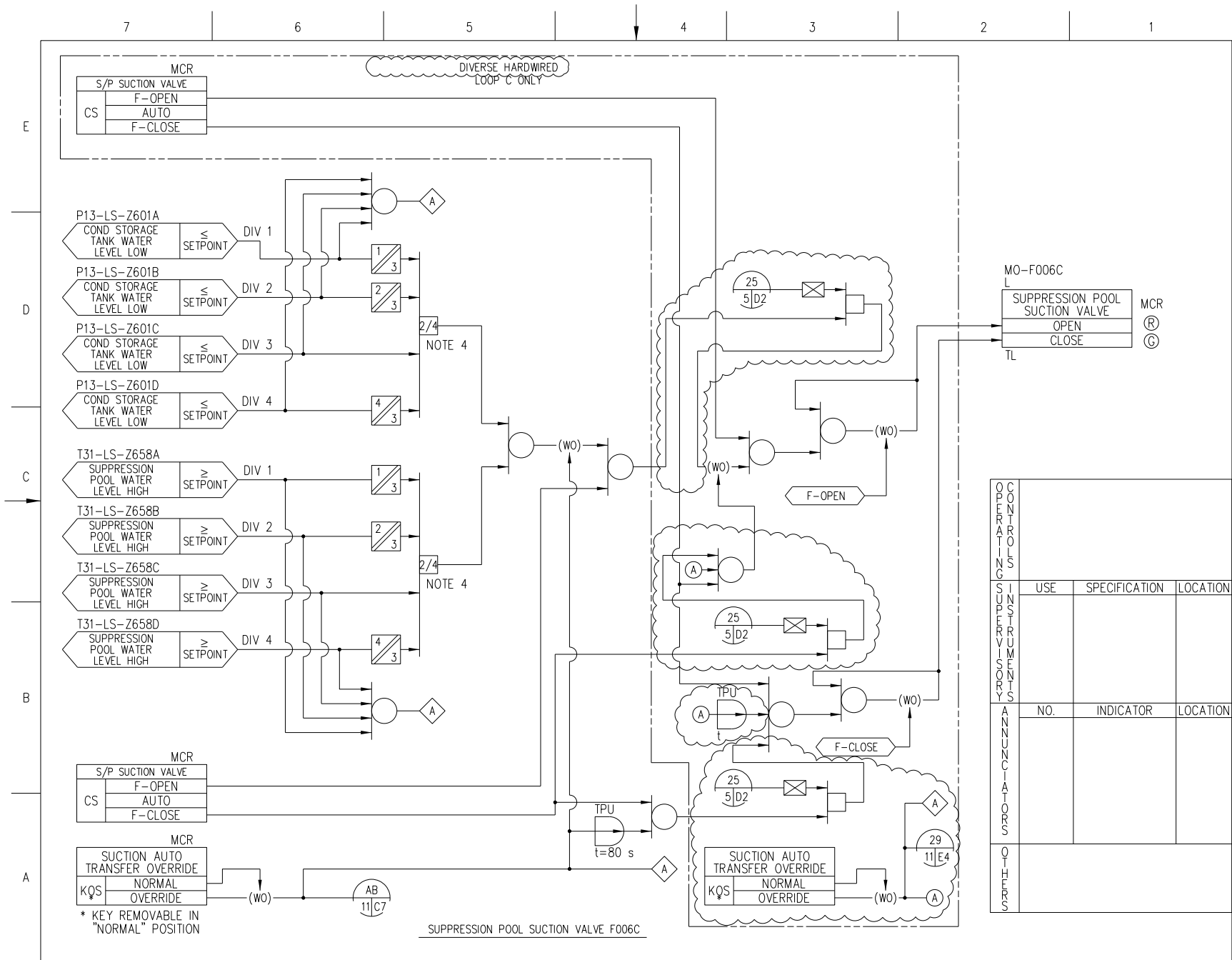


Figure 7.3-1 – High Pressure Core Flooder System IBD (Sheet 11 of 17)





**Figure 7.3-1 – High Pressure Core Flooder System IBD (Sheet 13 of 17)**

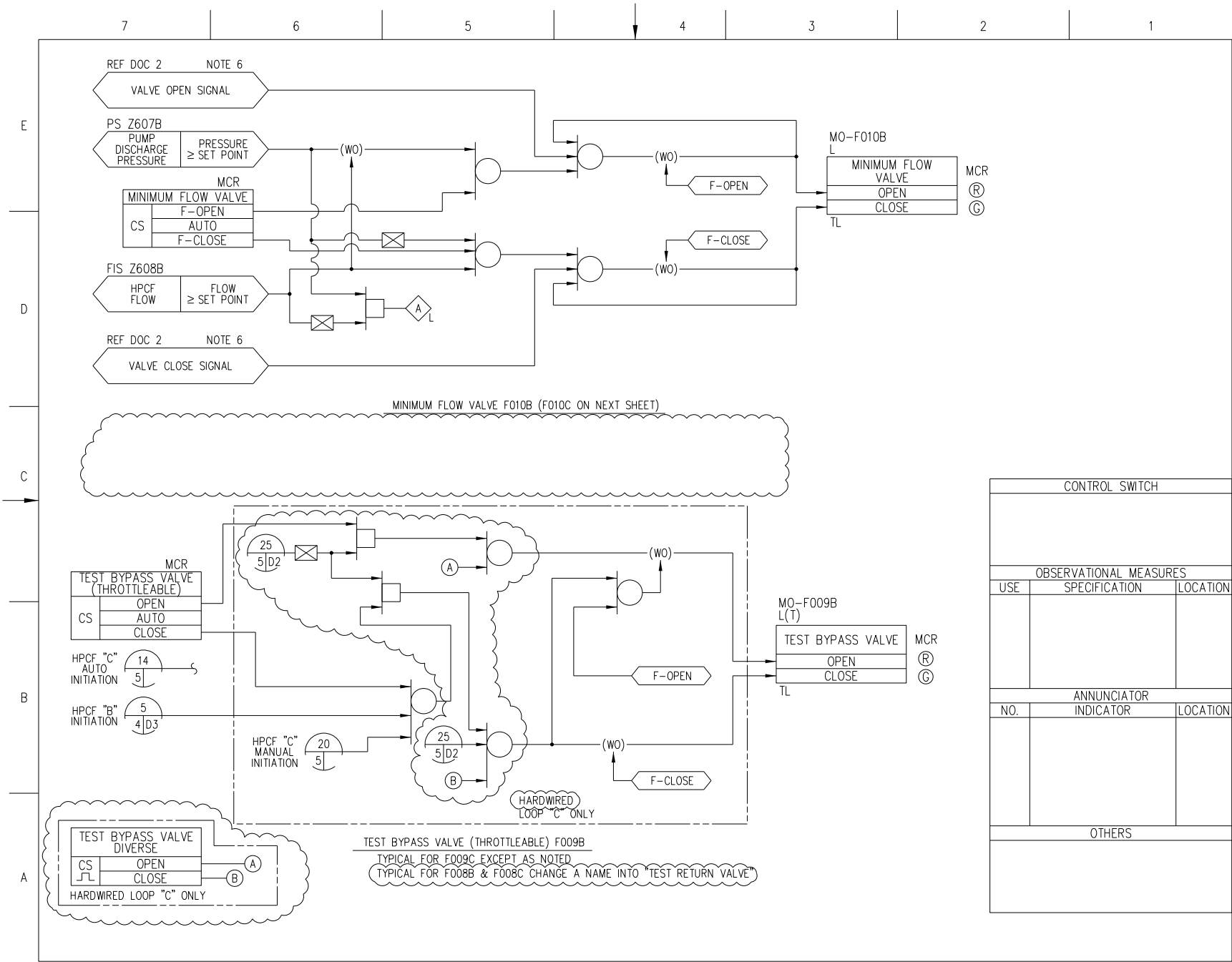


Figure 7.3-1 – High Pressure Core Flooder System IBD (Sheet 14 of 17)

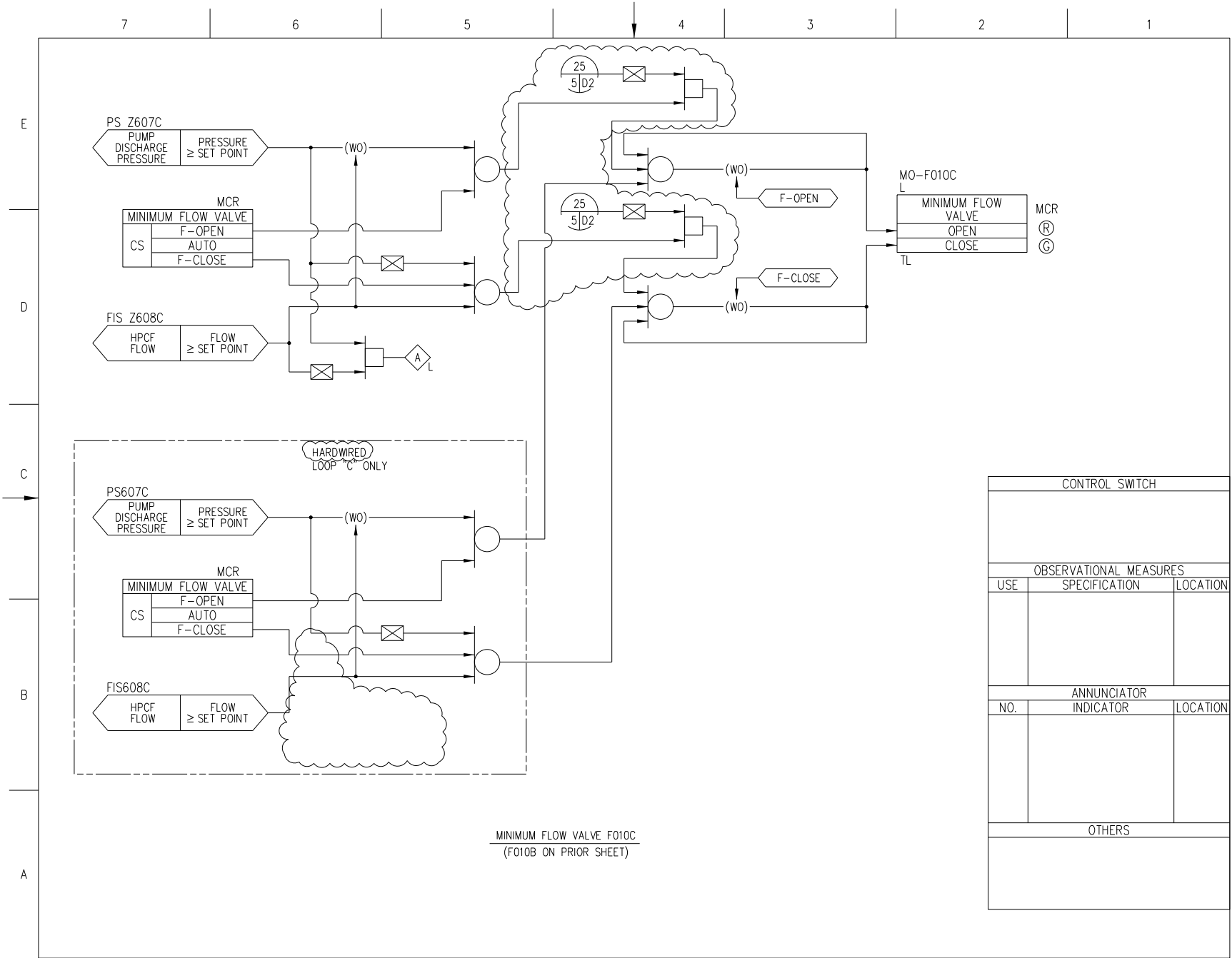


Figure 7.3-1 – High Pressure Core Flooder System IBD (Sheet 15 of 17)

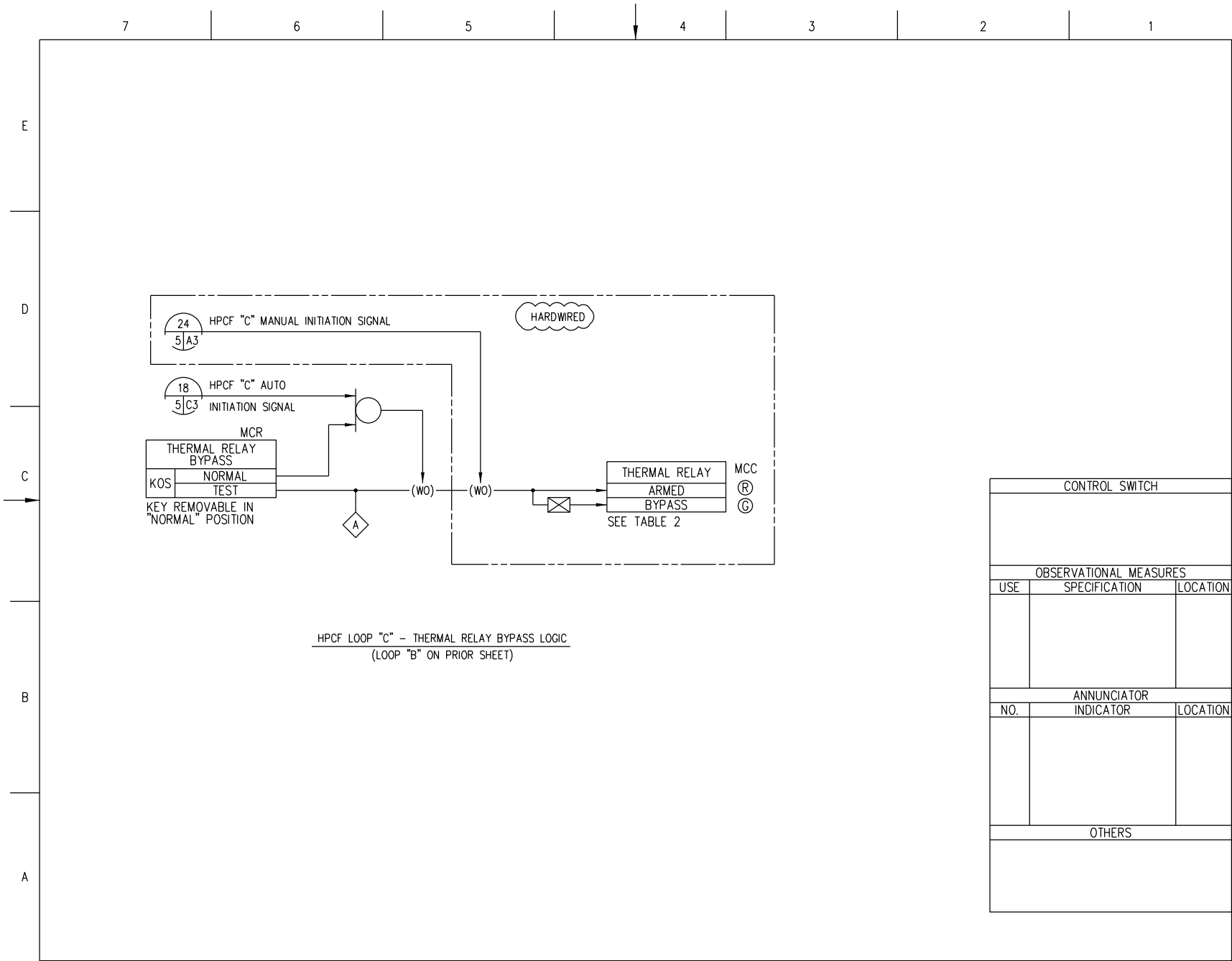


FIGURE 7.3-1 HIGH PRESSURE CORE FLOODER SYSTEM IBD (Sheet 17 of 17)  
STP 3 & 4

Rev.2

Figure 7.3-1 – High Pressure Core Flooder System IBD (Sheet 17 of 17)

SH. NO.	TITLES
1	CONTENTS
2	NOTES AND REFERENCES
3	SRV LOGIC AND CONTROL DIVISION 1 FOR SRV F010P
4	SRV LOGIC AND CONTROL DIVISION 2 FOR SRV F010J
5	SRV LOGIC AND CONTROL DIVISION 3(2,3) FOR SRV'S F010M(F010S, F010B)
6	SRV LOGIC AND CONTROL DIVISION 1 FOR SRV F010G
7	SRV LOGIC AND CONTROL DIVISION 1 FOR SRV F010K
8	SRV LOGIC AND CONTROL DIVISIONS 2(3,1) FOR SRV'S F010E(F010U, F010D)
9	SRV LOGIC AND CONTROL DIVISIONS 2(3,1,2) FOR SRV'S F010N(F010H, F010T, F010C)
10	SRV LOGIC AND CONTROL DIVISIONS 3(1,2,3) FOR SRV'S F010L(F010F, F010R, F010A)
11	ADS LOGIC AND CONTROL
12	ADS LOGIC AND CONTROL (CONTINUED)
13	ADS LOGIC AND CONTROL (CONTINUED)
14	ADS LOGIC AND CONTROL (CONTINUED)
15	ADS LOGIC AND CONTROL (CONTINUED)
16	ADS LOGIC AND CONTROL (CONTINUED)
17	ADS LOGIC AND CONTROL (CONTINUED)
18	ADS LOGIC AND CONTROL (CONTINUED)
19	FEEDWATER VALVES F001A(F001B)
20	FEEDWATER CHECK VALVES F003A(F003B)
21	FEEDWATER GATE VALVES F005A(F005B)
22	CUW RETURN FW LOOP SELECTOR VALVES F007A(F007B)
23	MAIN STEAM BYPASS/DRAIN ISOLATION VALVE F011(F012)
24	STEAM LINE DRAIN VALVES F013(F014, F016)
25	MAIN STEAM DRAIN LINE AOV'S F015(F017)
26	RPV HEAD VENT VALVES F018(F019, F020)
27	RPV WATER LEVEL ALARMS AND INDICATORS
28	LOW RPV METAL & BOTTOM DRAIN TEMPERATURE ALARM & RECORDER
29	HIGH DRYWELL PRESSURE ALARMS AND INDICATORS
30	SRV VALVE STEM POSITION ALARM
31	SRV DISCHARGE LINE AND RPV VENT DISCHARGE LINE HIGH TEMP ALARM
32	MSIV VALVE STEM POSITION SWITCHES
33	RPV HEAD SEAL LEAKOFF HIGH PRESSURE ALARM
34	ANNUNCIATOR LIST
35	ANNUNCIATOR LIST (CONTINUED)
36	ELCS (LDS/ECCS) BLOCK DIAGRAM DIV 1 (TYPICAL FOR DIV 2 & DIV 3)
37	ELCS (LDS/ECCS) BLOCK DIAGRAM (CONTINUED)

**Figure 7.3-2 – Nuclear Boiler System IBD (Sheet 1 of 37)**

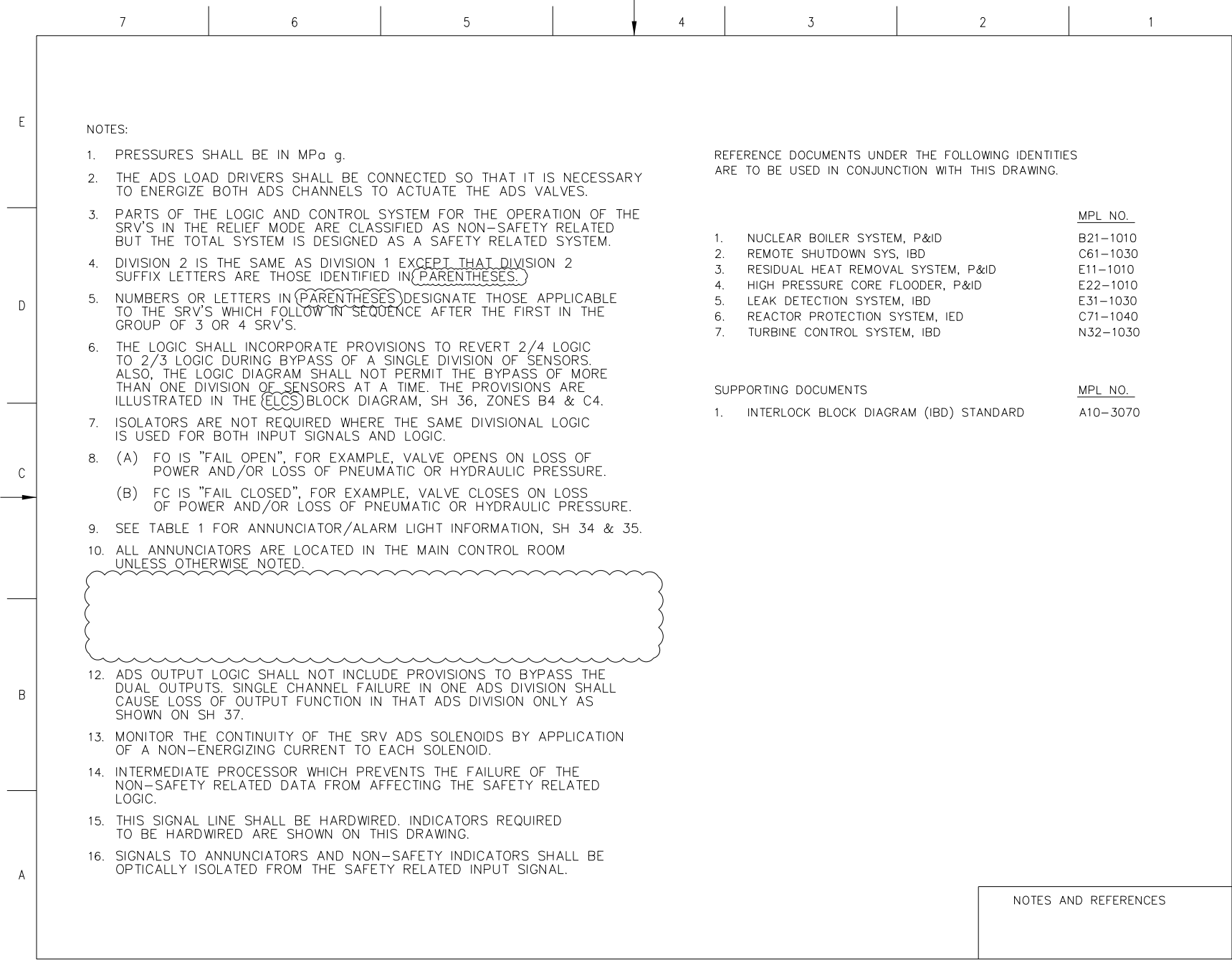


Figure 7.3-2 – Nuclear Boiler System IBD (Sheet 2 of 37)

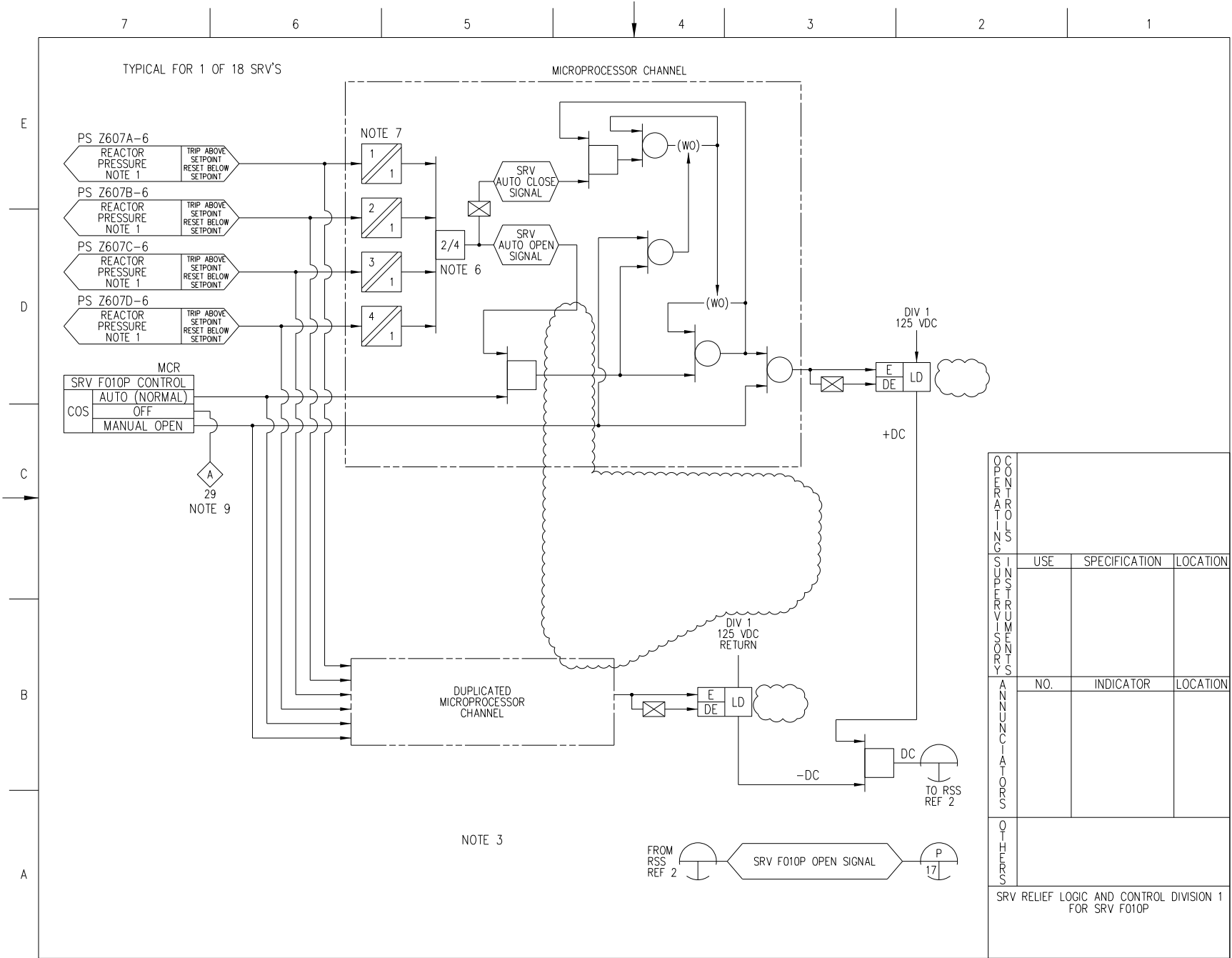


Figure 7.3-2 – Nuclear Boiler System IBD (Sheet 3 of 37)

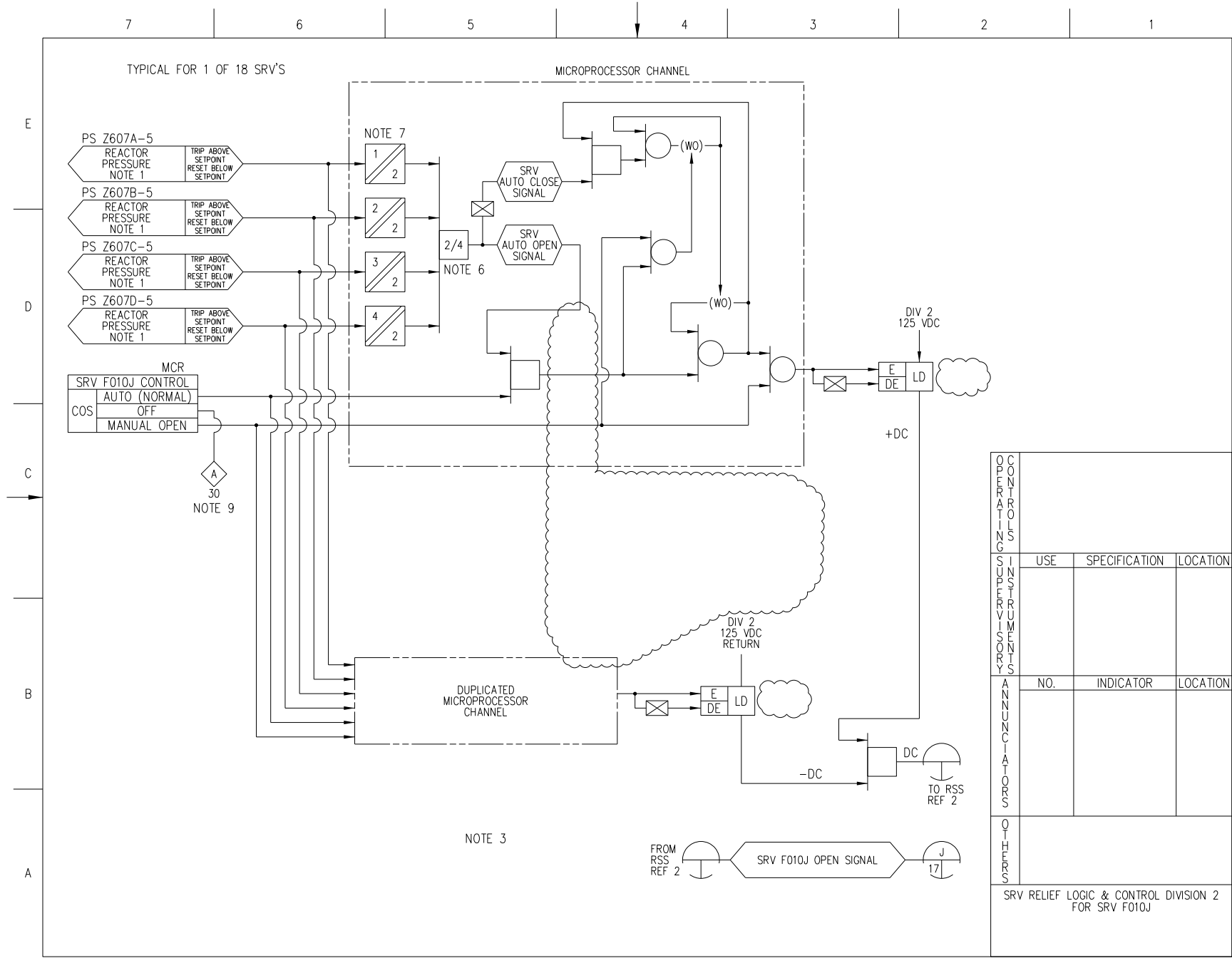


Figure 7.3-2 – Nuclear Boiler System IBD (Sheet 4 of 37)



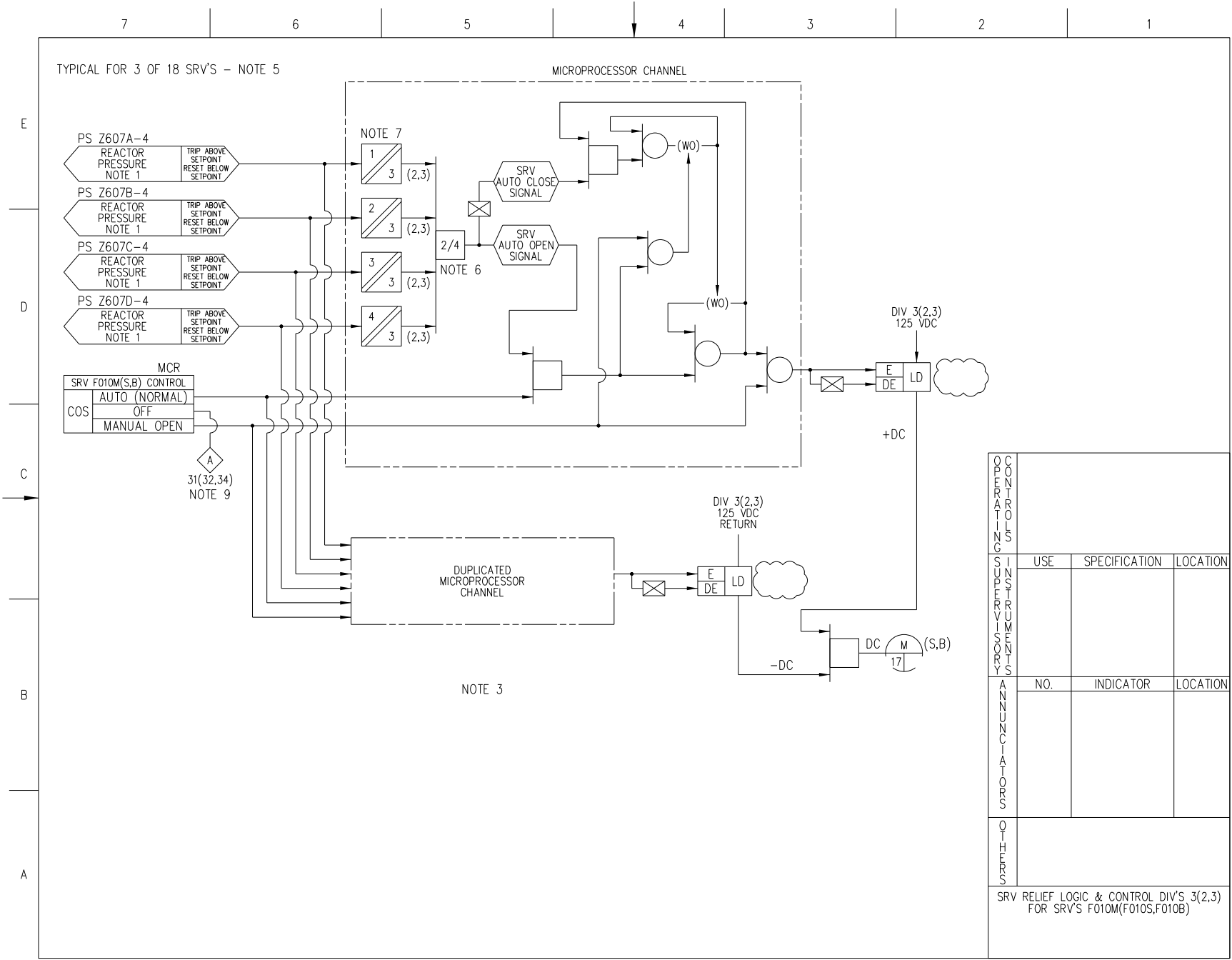


Figure 7.3-2 – Nuclear Boiler System IBD (Sheet 5 of 37)

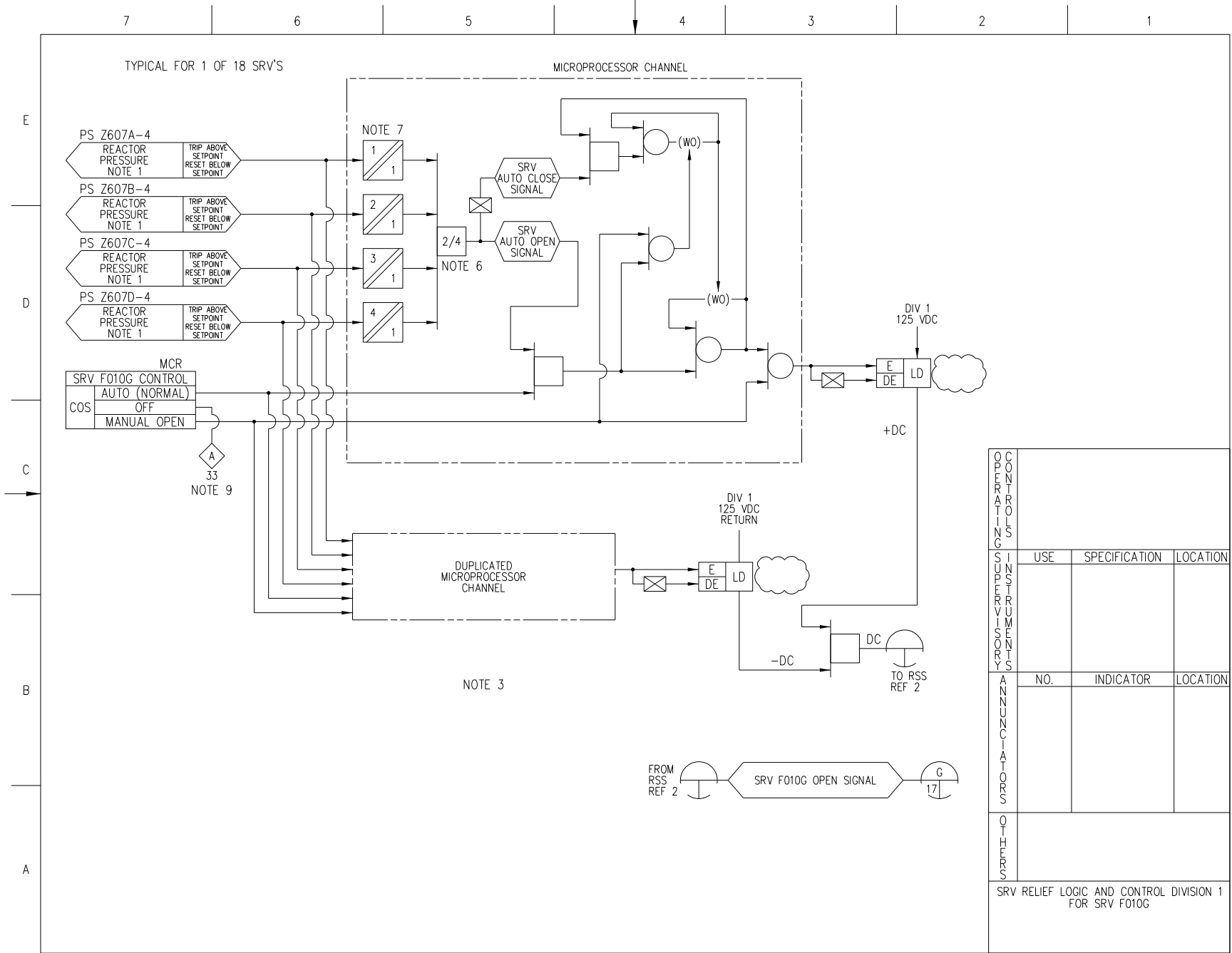


Figure 7.3-2 – Nuclear Boiler System IBD (Sheet 6 of 37)

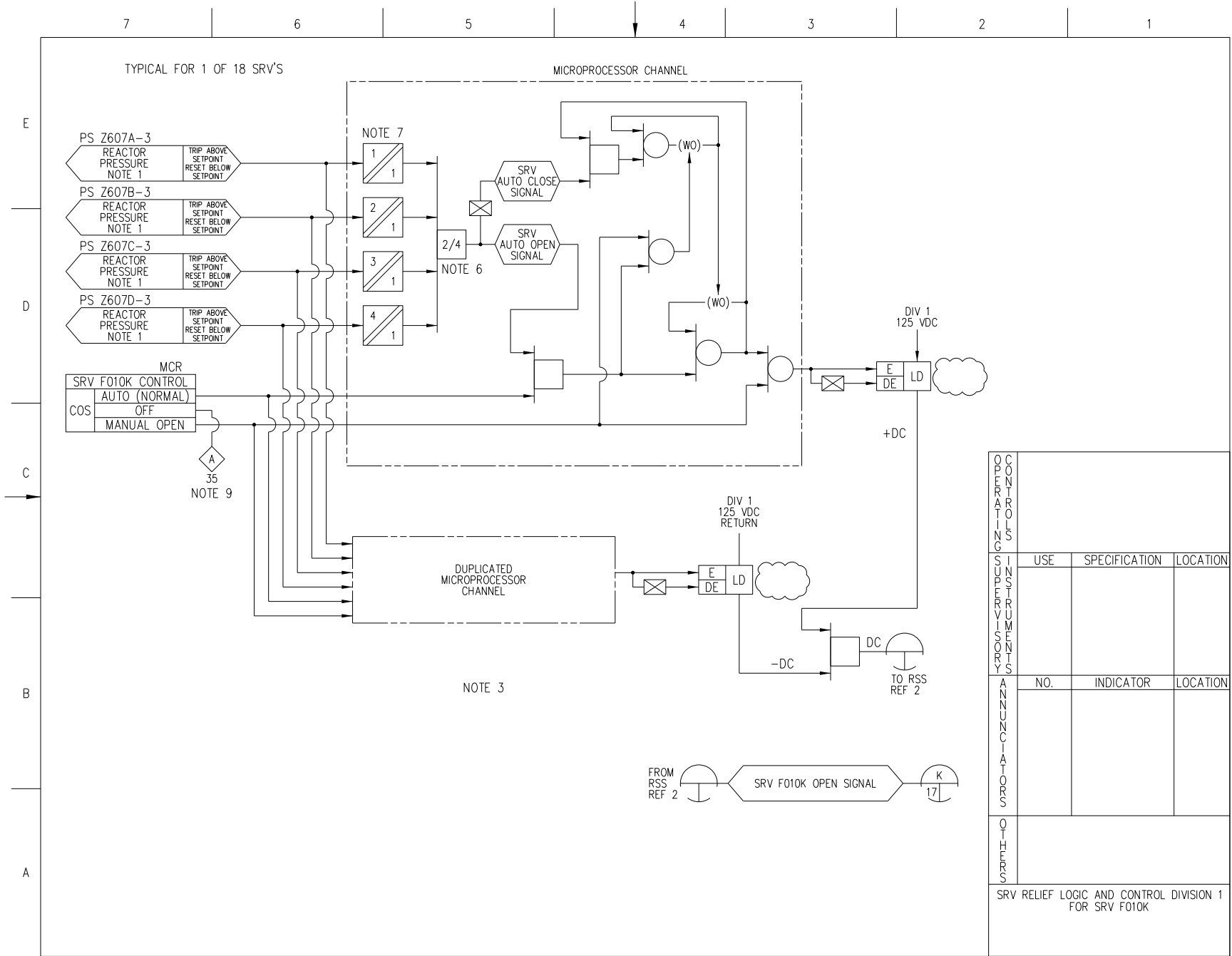


Figure 7.3-2 – Nuclear Boiler System IBD (Sheet 7 of 37)

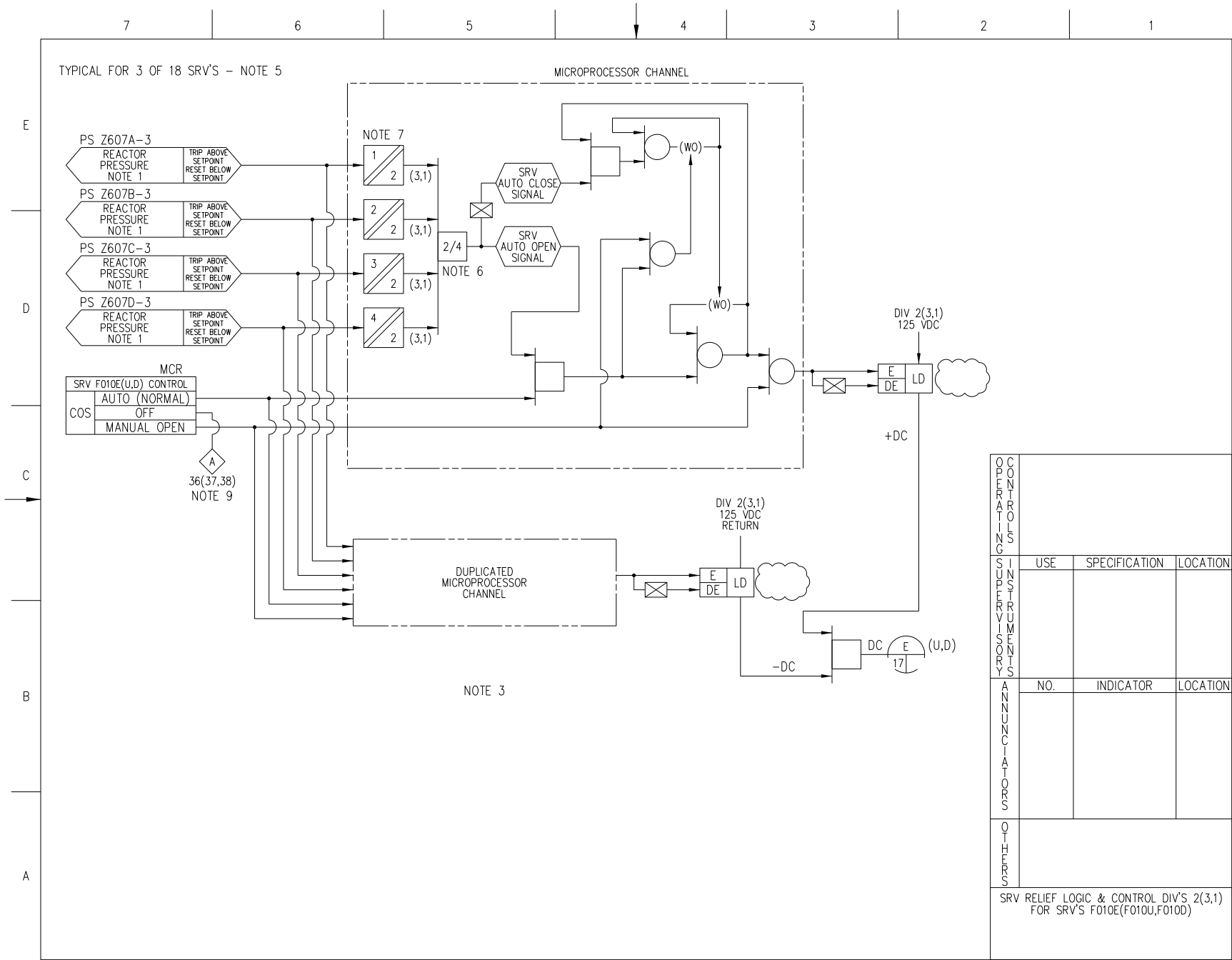


Figure 7.3-2 – Nuclear Boiler System IBD (Sheet 8 of 37)

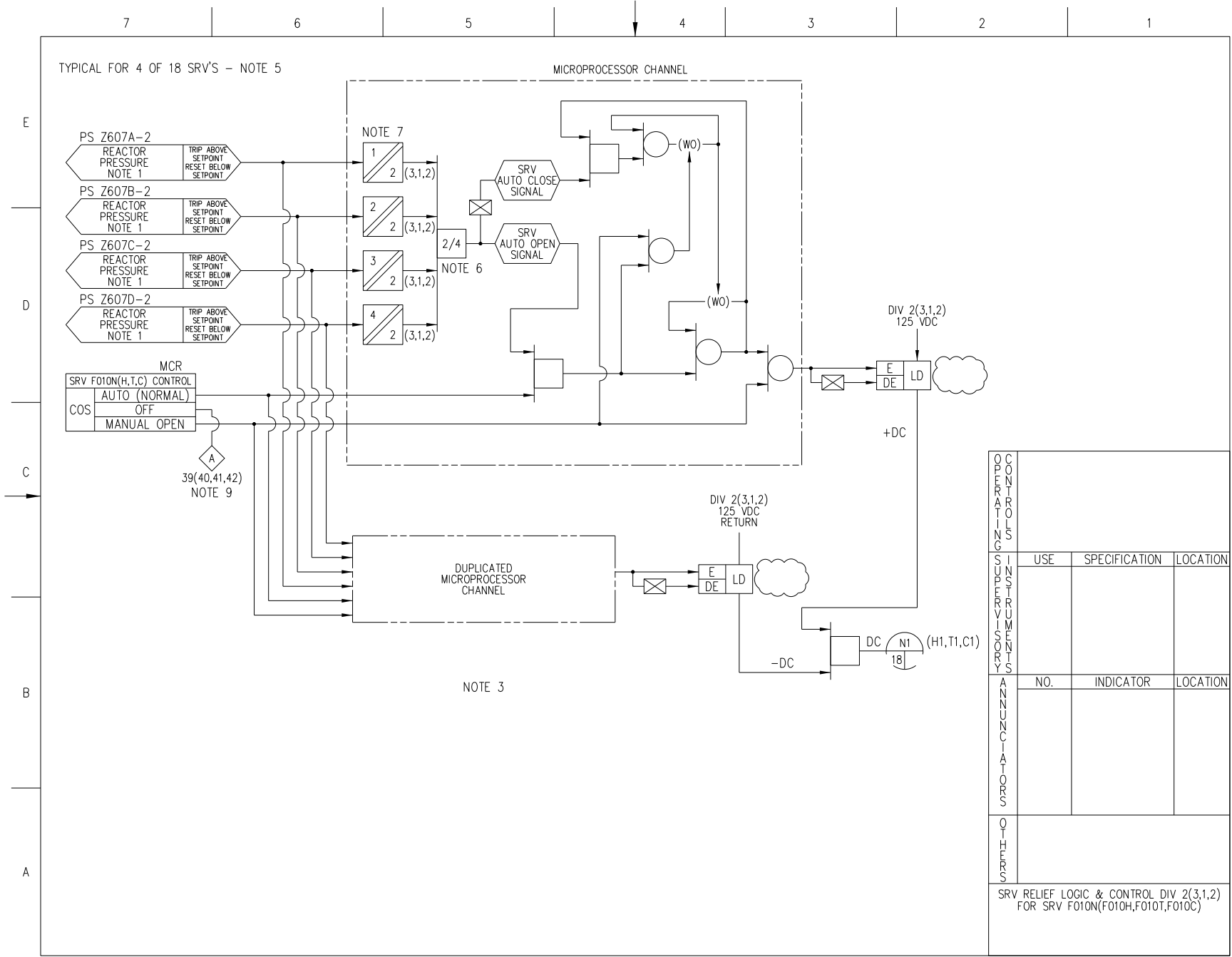


Figure 7.3-2 – Nuclear Boiler System IBD (Sheet 9 of 37)

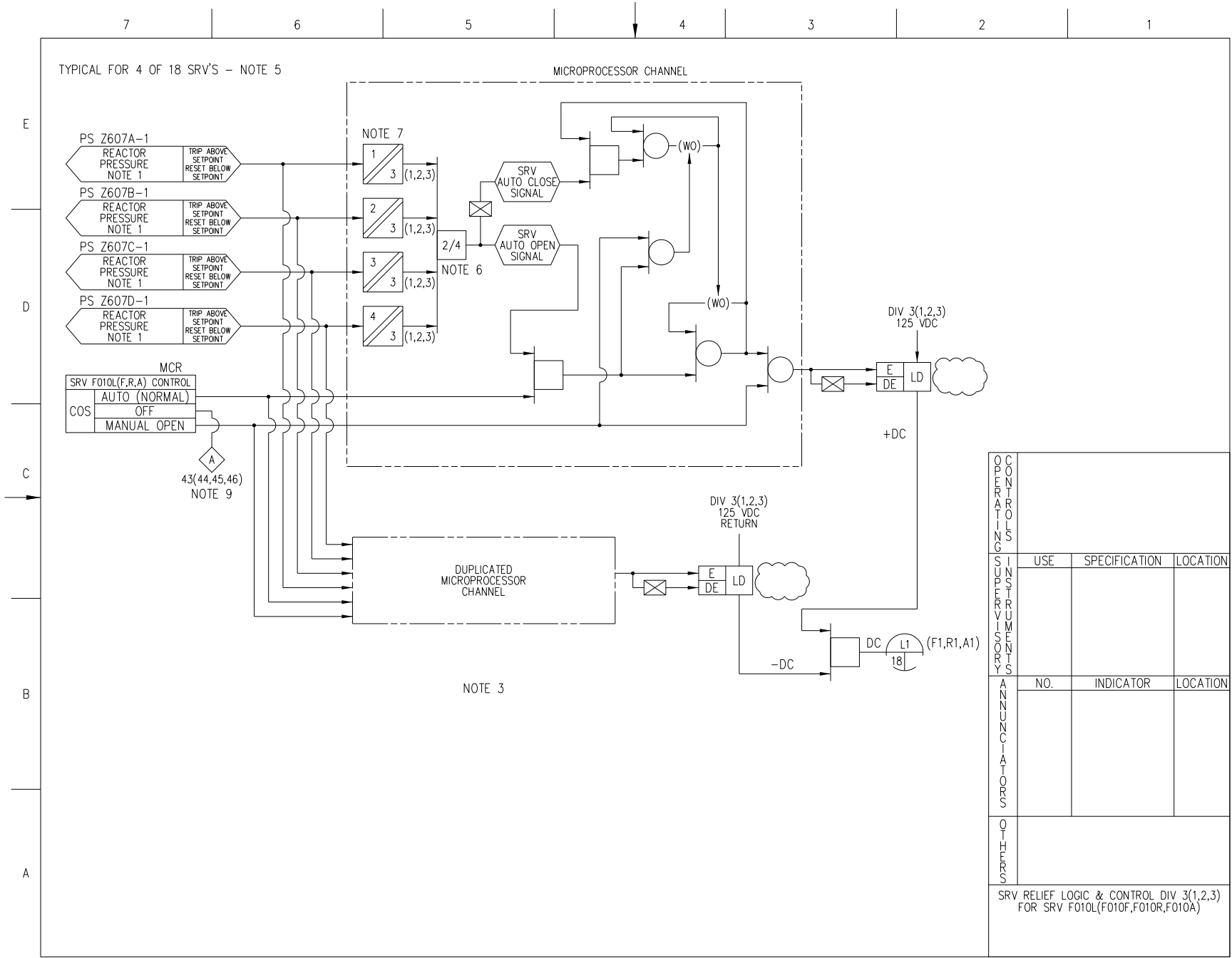


Figure 7.3-2 – Nuclear Boiler System IBD (Sheet 10 of 37)

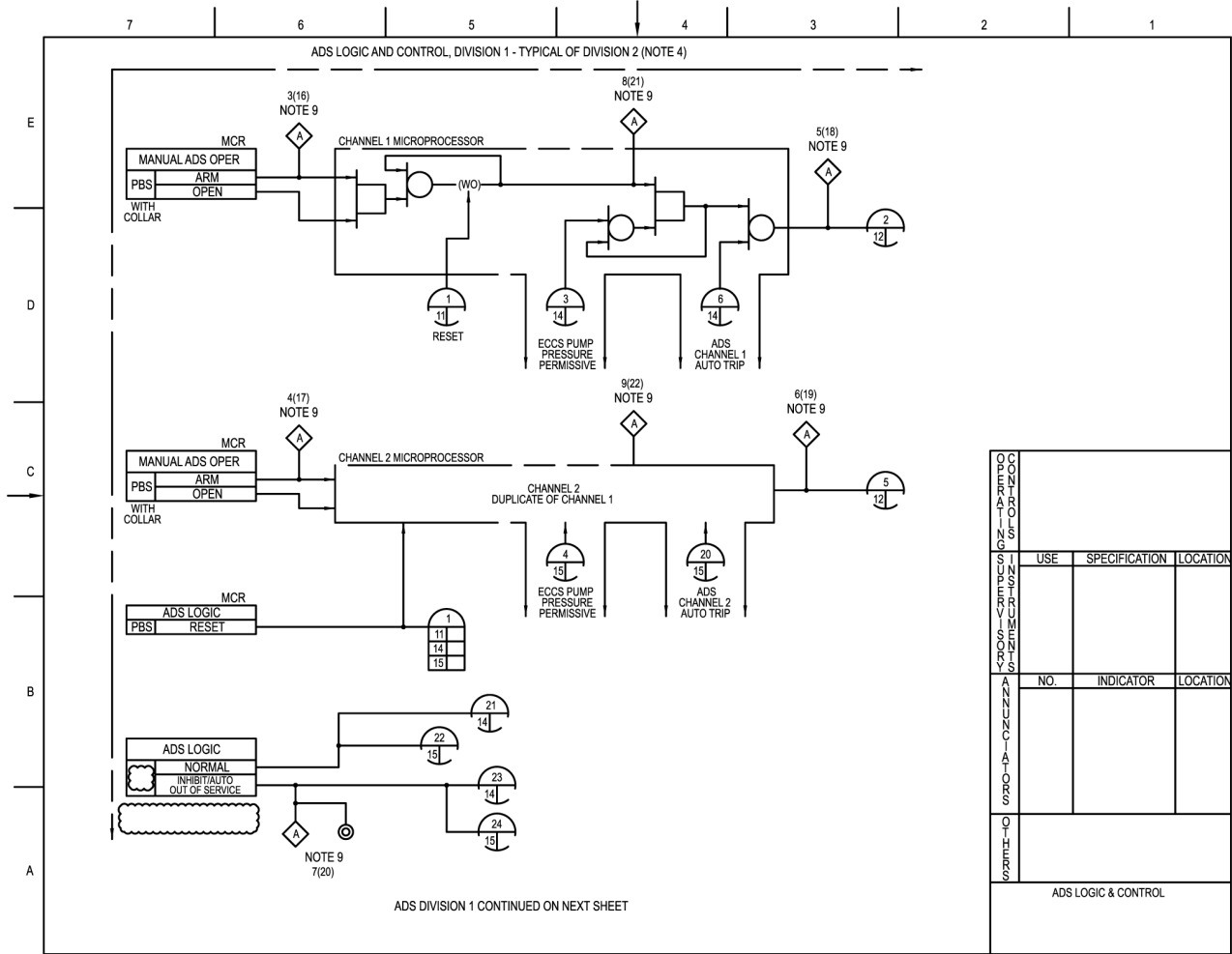


Figure 7.3-2 – Nuclear Boiler System IBD (Sheet 11 of 37)

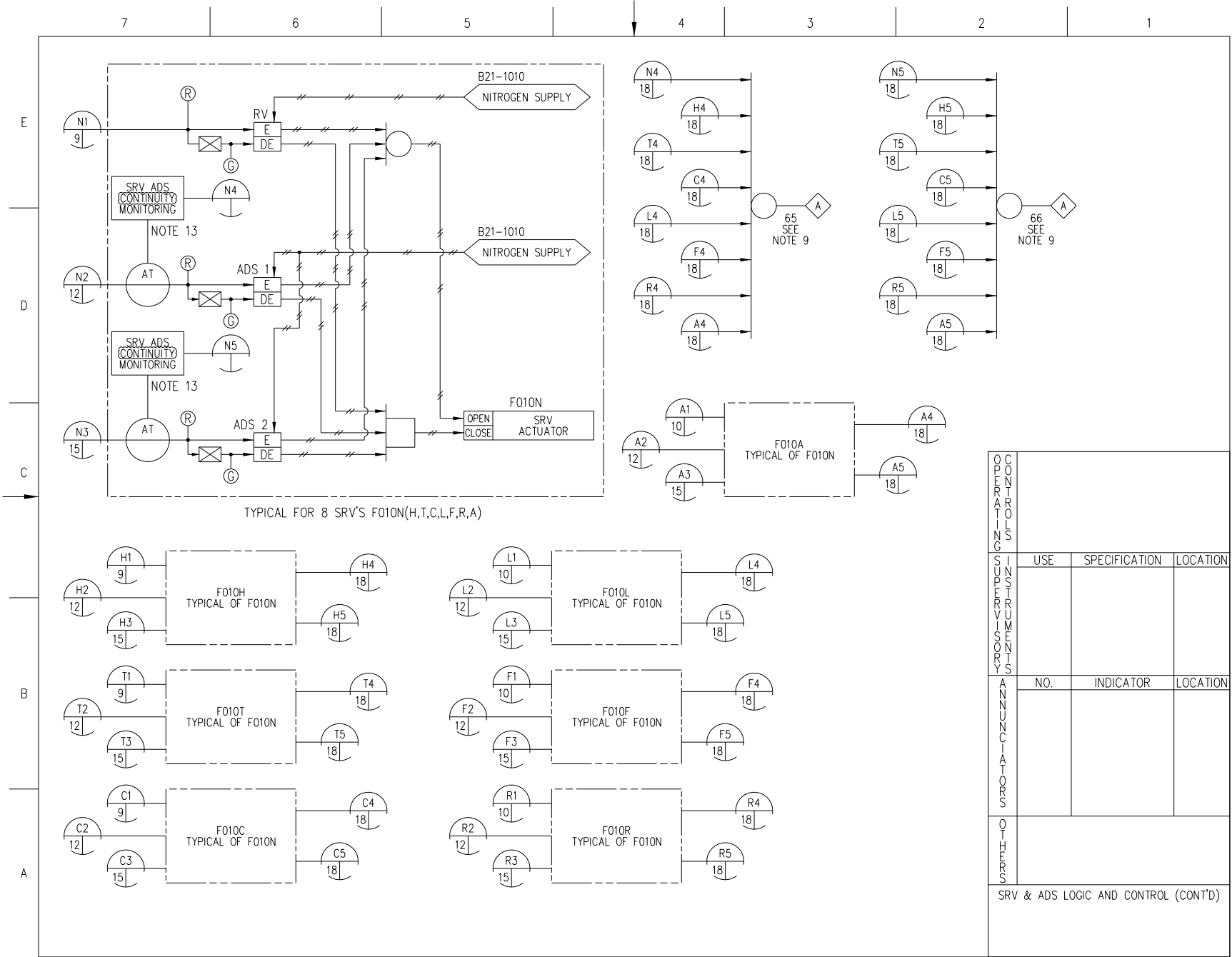


Figure 7.3-2 – Nuclear Boiler System IBD (Sheet 18 of 37)



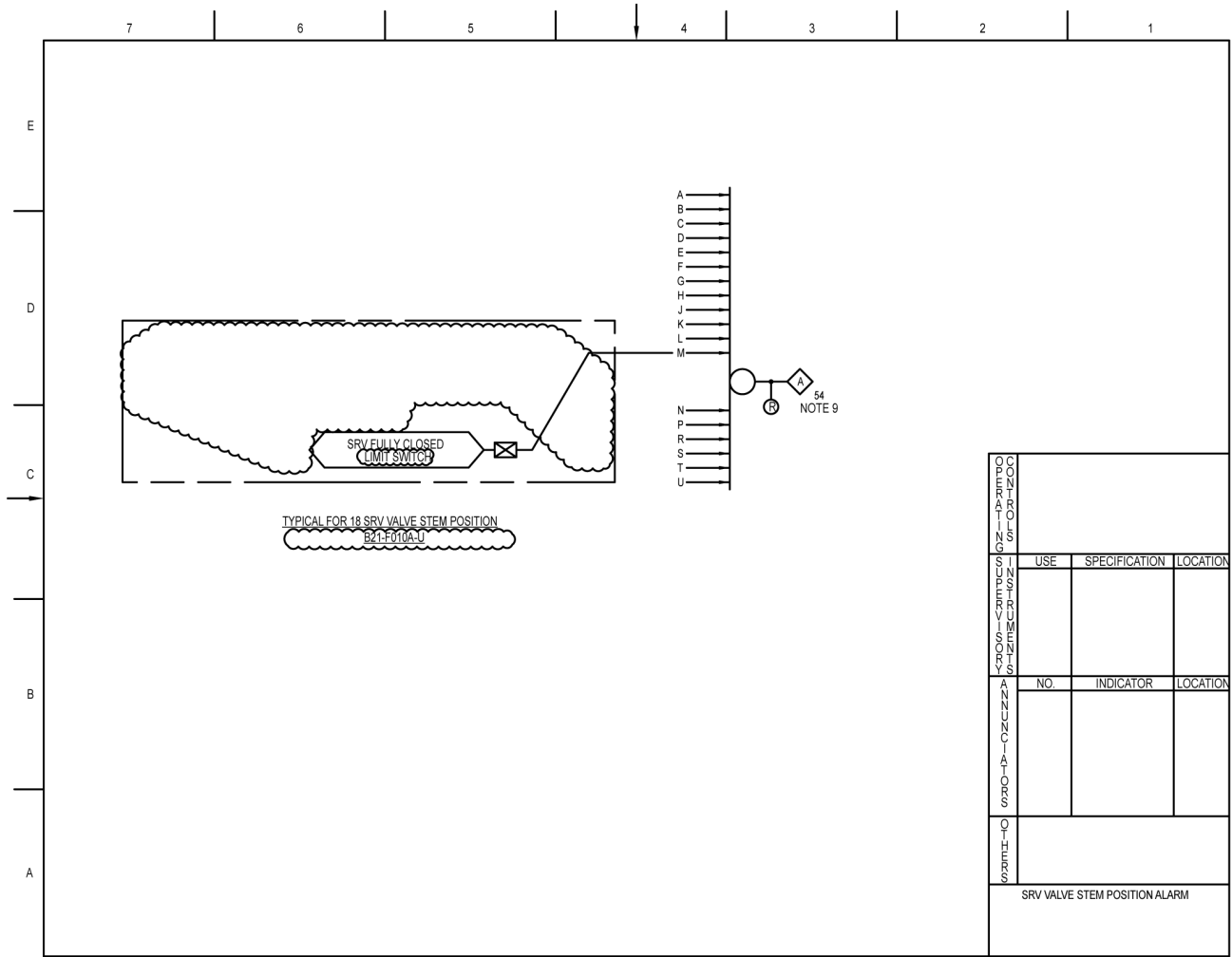


Figure 7.3-2 – Nuclear Boiler System IBD (Sheet 30 of 37)

		7		6		5		4		3		2		1
TABLE 1: ANNUNCIATOR/ALARM LIGHTS - NOTE 10														
E	D	C	B	A	TABLE 1: (CONT)					ANNUNCIATOR LIST				
					ALARM NO.	INDICATION	FUNCTION	SOURCE OF SIGNAL		ALARM NO.	INDICATION	FUNCTION	SOURCE OF SIGNAL	
										30	ALARM	SRV RELIEF "J" SWITCHED OFF	SWITCH OUTPUT SHEET 4	
										31	ALARM	SRV RELIEF "M" SWITCHED OFF	SWITCH OUTPUT SHEET 5	
										32	ALARM	SRV RELIEF "S" SWITCHED OFF	SWITCH OUTPUT SHEET 5	
										33	ALARM	SRV RELIEF "G" SWITCHED OFF	SWITCH OUTPUT SHEET 6	
										34	ALARM	SRV RELIEF "B" SWITCHED OFF	SWITCH OUTPUT SHEET 7	
										35	ALARM	SRV RELIEF "K" SWITCHED OFF	SWITCH OUTPUT SHEET 7	
										36	ALARM	SRV RELIEF "E" SWITCHED OFF	SWITCH OUTPUT SHEET 8	
										37	ALARM	SRV RELIEF "U" SWITCHED OFF	SWITCH OUTPUT SHEET 8	
										38	ALARM	SRV RELIEF "D" SWITCHED OFF	SWITCH OUTPUT SHEET 8	
										39	ALARM	SRV RELIEF "N" SWITCHED OFF	SWITCH OUTPUT SHEET 9	
										40	ALARM	SRV RELIEF "H" SWITCHED OFF	SWITCH OUTPUT SHEET 9	
										41	ALARM	SRV RELIEF "T" SWITCHED OFF	SWITCH OUTPUT SHEET 9	
										42	ALARM	SRV RELIEF "C" SWITCHED OFF	SWITCH OUTPUT SHEET 9	
										43	ALARM	SRV RELIEF "L" SWITCHED OFF	SWITCH OUTPUT SHEET 10	
										44	ALARM	SRV RELIEF "F" SWITCHED OFF	SWITCH OUTPUT SHEET 10	
										45	ALARM	SRV RELIEF "R" SWITCHED OFF	SWITCH OUTPUT SHEET 10	
										46	ALARM	SRV RELIEF "A" SWITCHED OFF	SWITCH OUTPUT SHEET 10	
										47	ALARM/RED LIGHT	ENHANCED RPV WATER LEVEL LOW DIV 1	LOGIC OUTPUT SHEET 27	
										48	ALARM/RED LIGHT	ENHANCED RPV WATER LEVEL LOW DIV 2	LOGIC OUTPUT SHEET 27	
										49	ALARM/ORANGE LIGHT	LOW RPV METAL OR BOTTOM DRAIN TEMP	LOGIC OUTPUT SHEET 28	
										50	ALARM/RED LIGHT	HIGH DRYWELL PRESSURE DIVISION 1	LOGIC OUTPUT SHEET 29	

**Figure 7.3-2 – Nuclear Boiler System IBD (Sheet 34 of 37)**

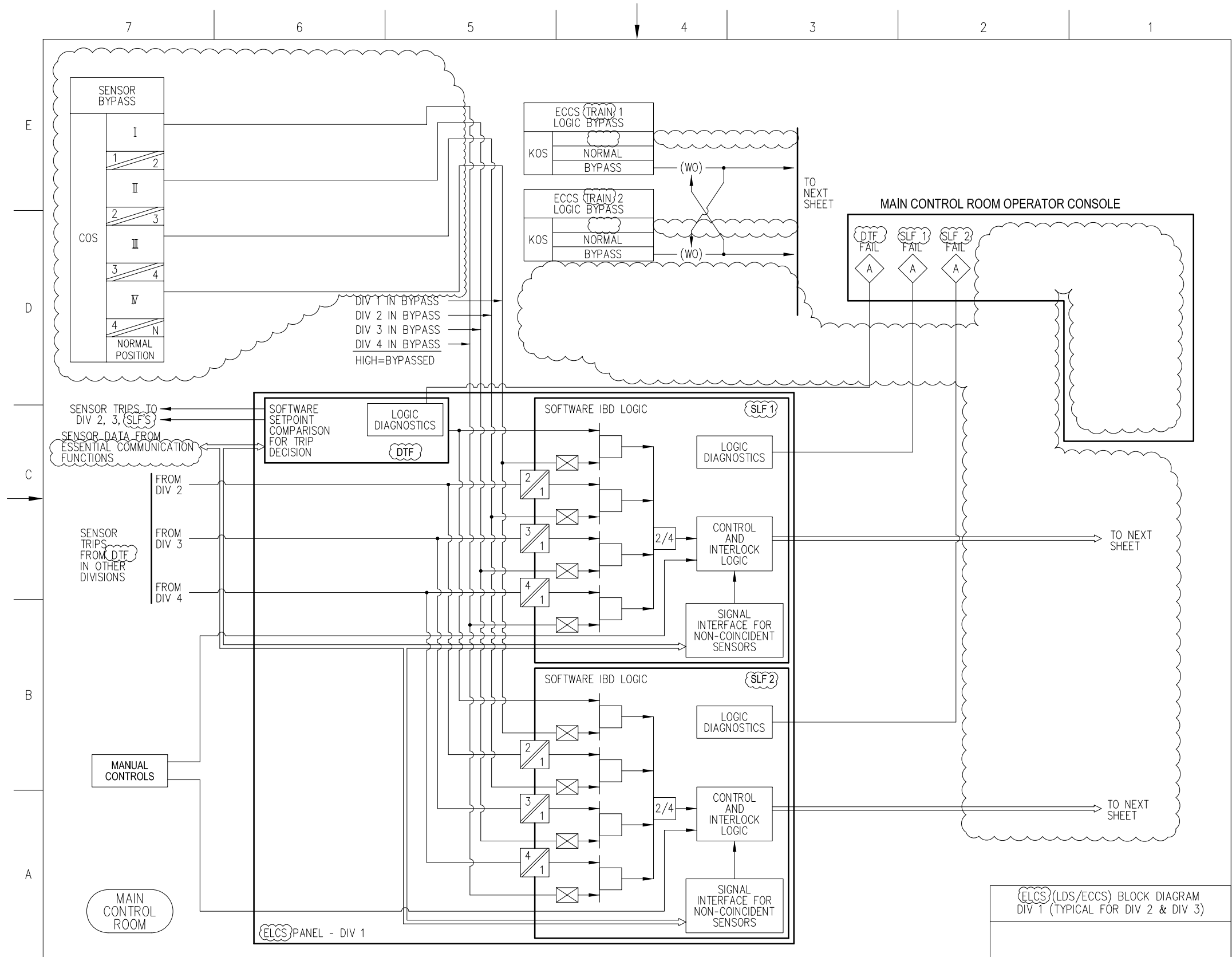


Figure 7.3-2 – Nuclear Boiler System IBD (Sheet 36 of 37)

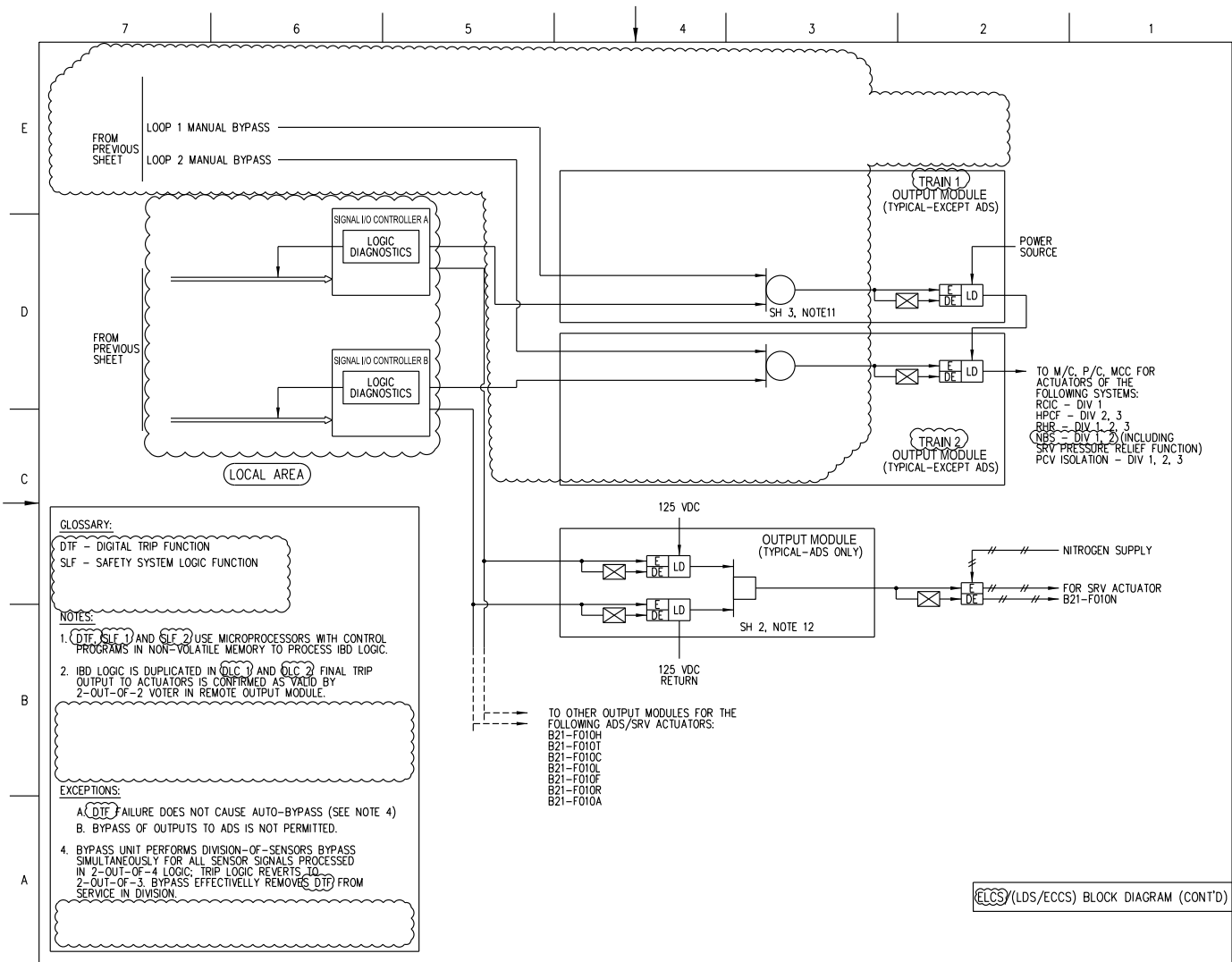


FIGURE 7.3-2 NUCLEAR BOILER SYSTEM IBD (Sheet 37 of 37)  
STP 3 & 4 Rev.2

Figure 7.3-2 – Nuclear Boiler System IBD (Sheet 37 of 37)