

Figure 2.5S.1-10 Geologic Features of the Gulf Coast Region

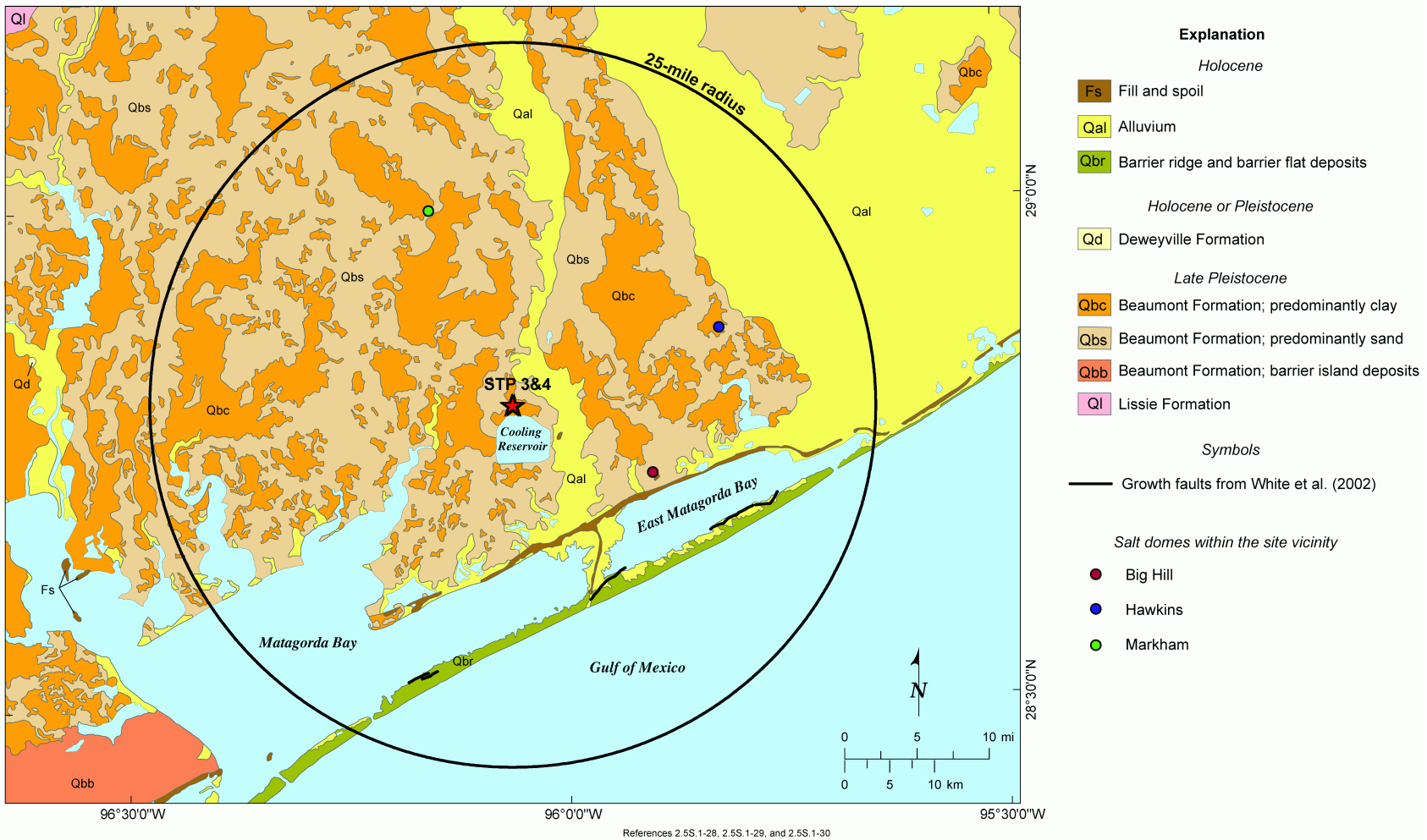


Figure 2.5S.1-11 Site Vicinity Geologic Map (25-mile radius)

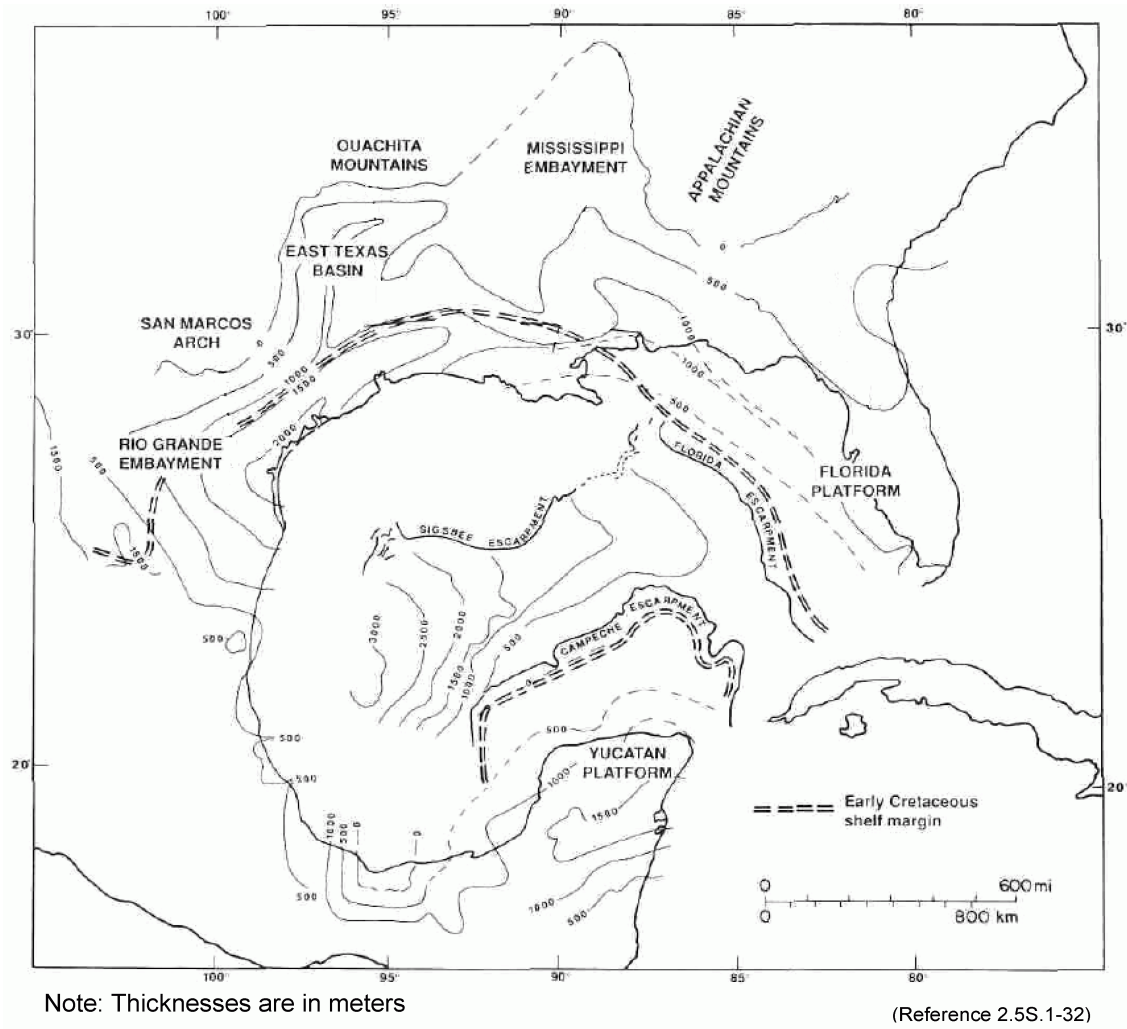


Figure 2.5S.1-12 Upper Cretaceous Isopach Map

ERATHEM	SYSTEM	SERIES	AGE m.y.	STP	Approximate Thickness Undifferentiated (feet)	Approximate elevation of formation top (feet)	Hydrostratigraphy
CENOZOIC	QUATERNARY	Holocene	0.10	Undifferentiated Deweyville Terrace Deposits	0-50		Coastal Lowlands Aquifer System
		Pleistocene	2	Beaumont Fm Lissie Fm Willis Formation	400 600-700	0+ -400	
		Pliocene	5	Goliad sand	800 to 1,000	-1,000 to -1,100	
	TERTIARY	Miocene	24	Fleming Formation Oakville Sandstone	3,400 to 4,500	-1,800 to -2,100	Burkeville Confining System
		Oligocene	38	Catahoula Sand Anahuac Formation Frio Formation	3,000	-5,200 to -6,600	Jasper aquifer
				Frio Clay (Vicksburg Group)	200	-8,200 to -9,600	Catahoula Confining System
		Eocene	58	Whitsett Manning clay Welborn	500 to 1,100	-8,400 to -9,800	Coastal Uplands Aquifer System
				Caddell Yegua			
				Cook Mountain Sparta Sand Weches Fm Queen City Snd Reklaw Fm	1,400 to 4,500	-8,900 to -10,900	
				Carrizo			
				Undifferentiated	2,000	-10,300 to -15,400	
				Wills Point Kincaid Fm	2,500	-12,300 to -17,400	
		Paleocene	66				Vicksburg - Jackson Confining System
							Upper Claiborne Aquifer
		Paleocene	66				Middle Claiborne Confining System
							Middle Claiborne Aquifer
							Confining System
							Lower Claiborne-Upper Wilcox Aquifer
							Middle Wilcox Aquifer
							Not Present

(Reference 2.5S.1-25)

Figure 2.5S.1-13 General Cenozoic Stratigraphic Column

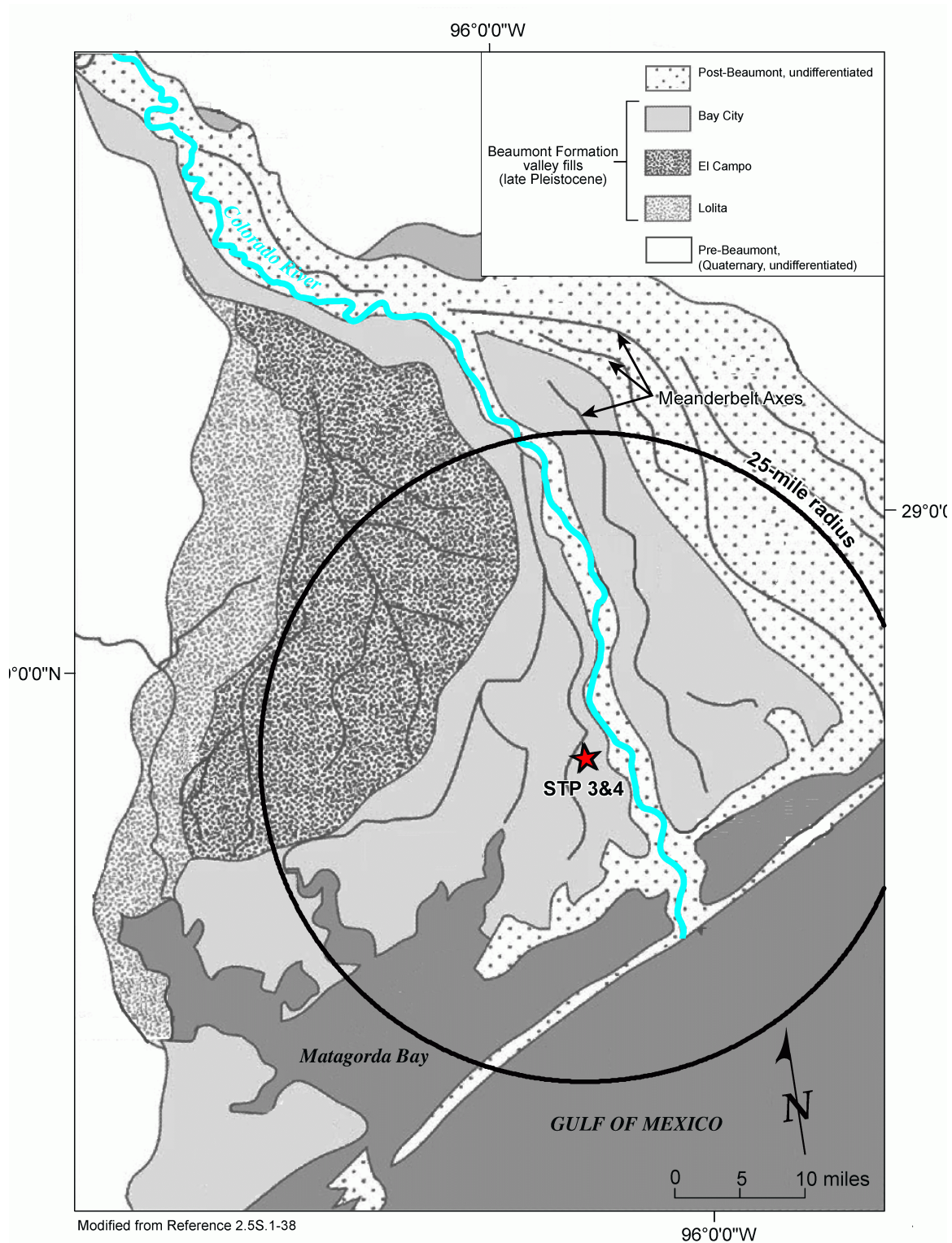
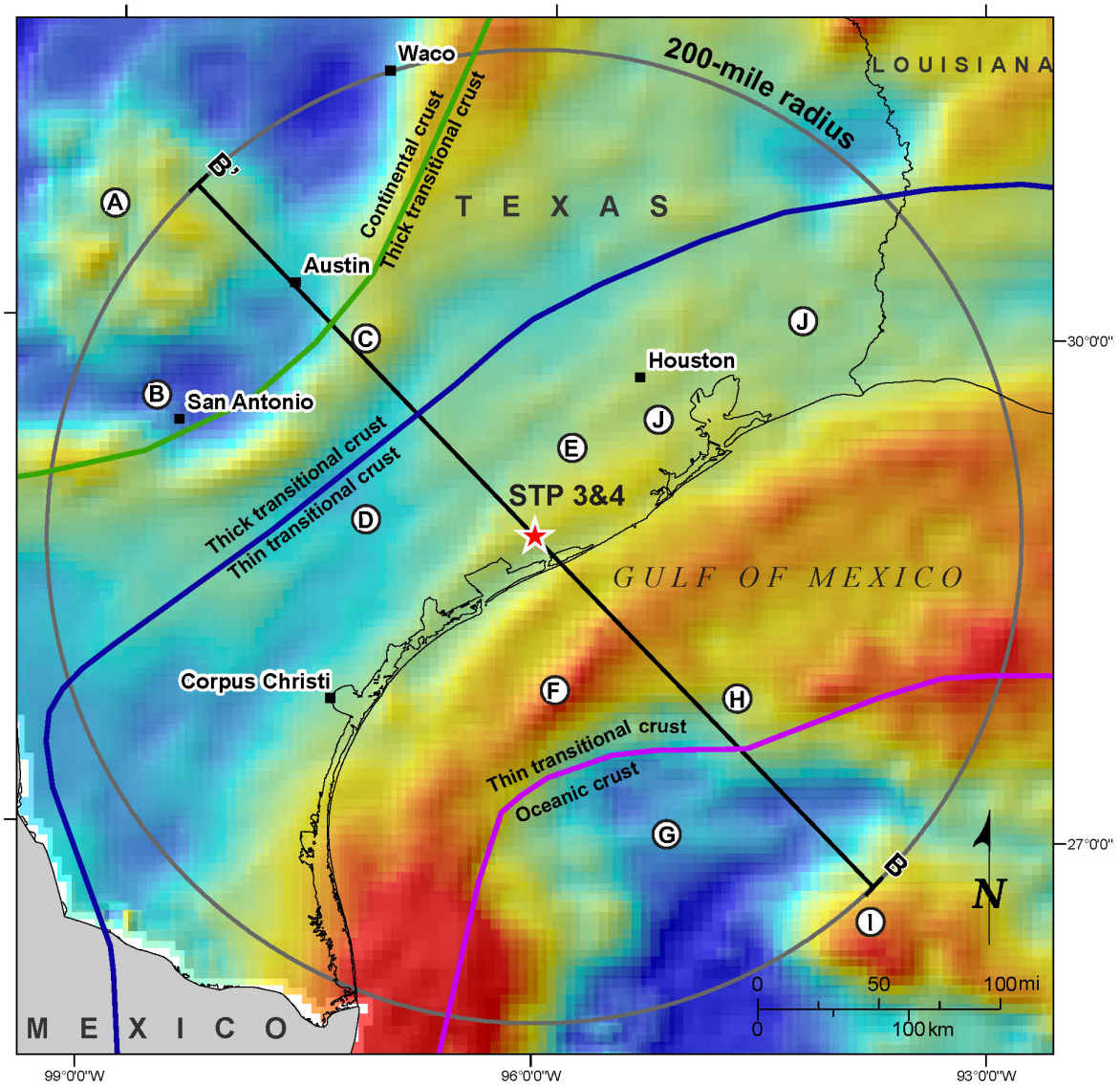


Figure 2.5S.1-14 Fluvial Deposits of the Colorado River



References 2.5S.1-43, 2.5S.1-44, and 2.5S.1-45

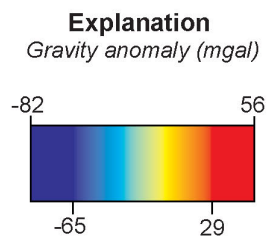


Figure 2.5S.1-15 Gravity Anomaly Features in Site Region (200-mile radius)

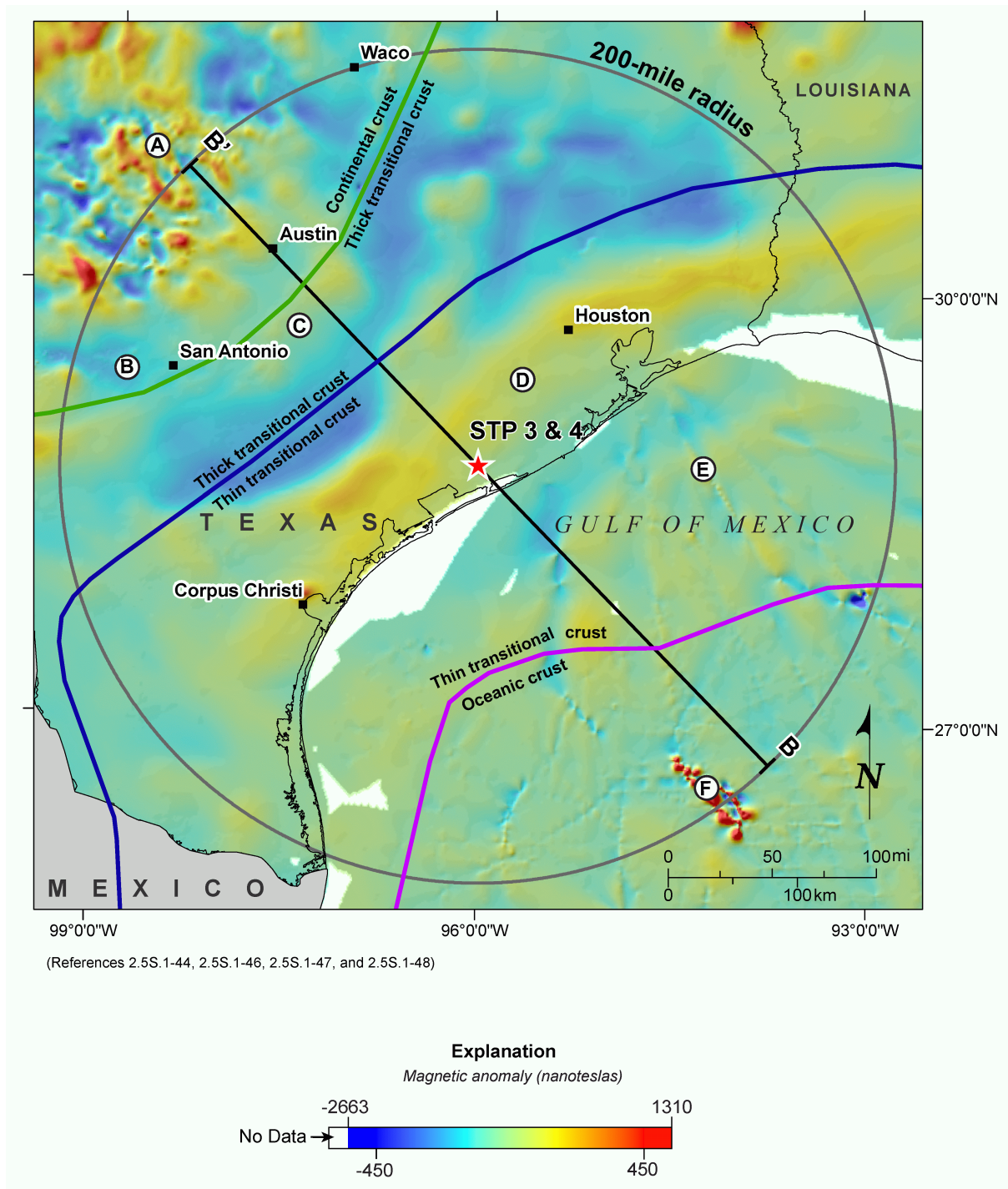


Figure 2.5S.1-16 Magnetic Anomaly Features in Site Region (200-mile radius)

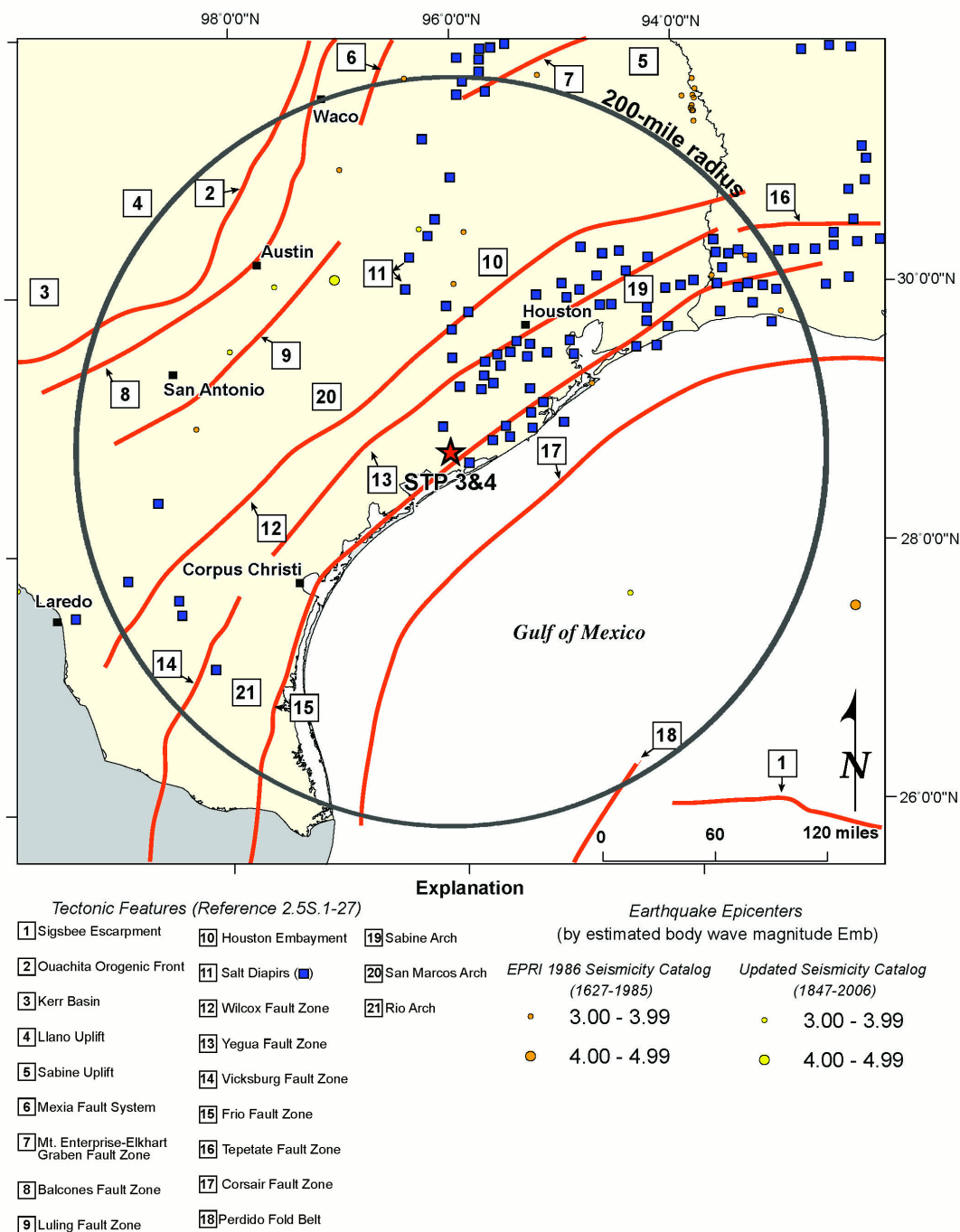


Figure 2.5S.1-17 Tectonic Features in Site Region (200-mile radius)

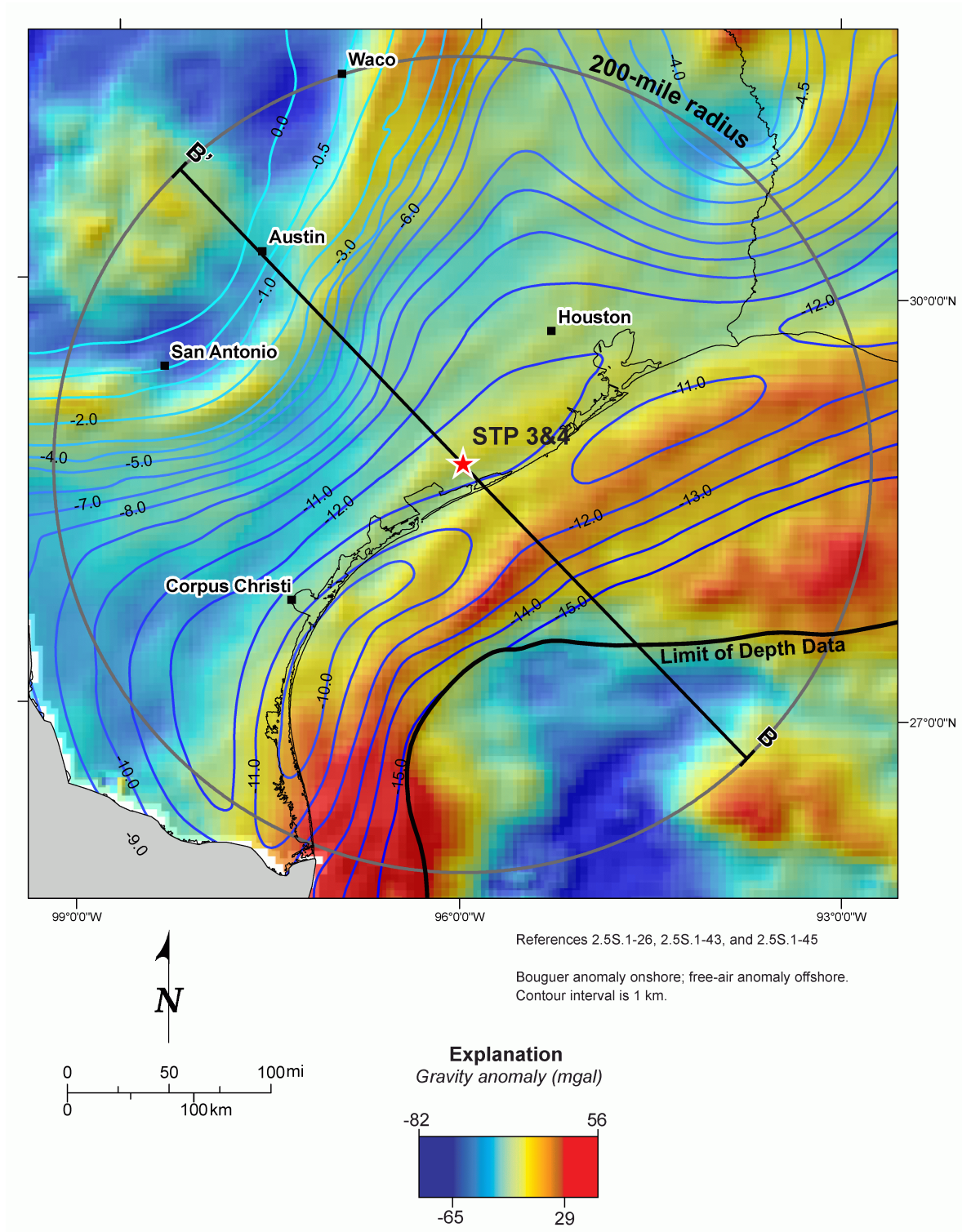


Figure 2.5S.1-18 Gravity Anomaly and Depth to Base of Mesozoic Sediments