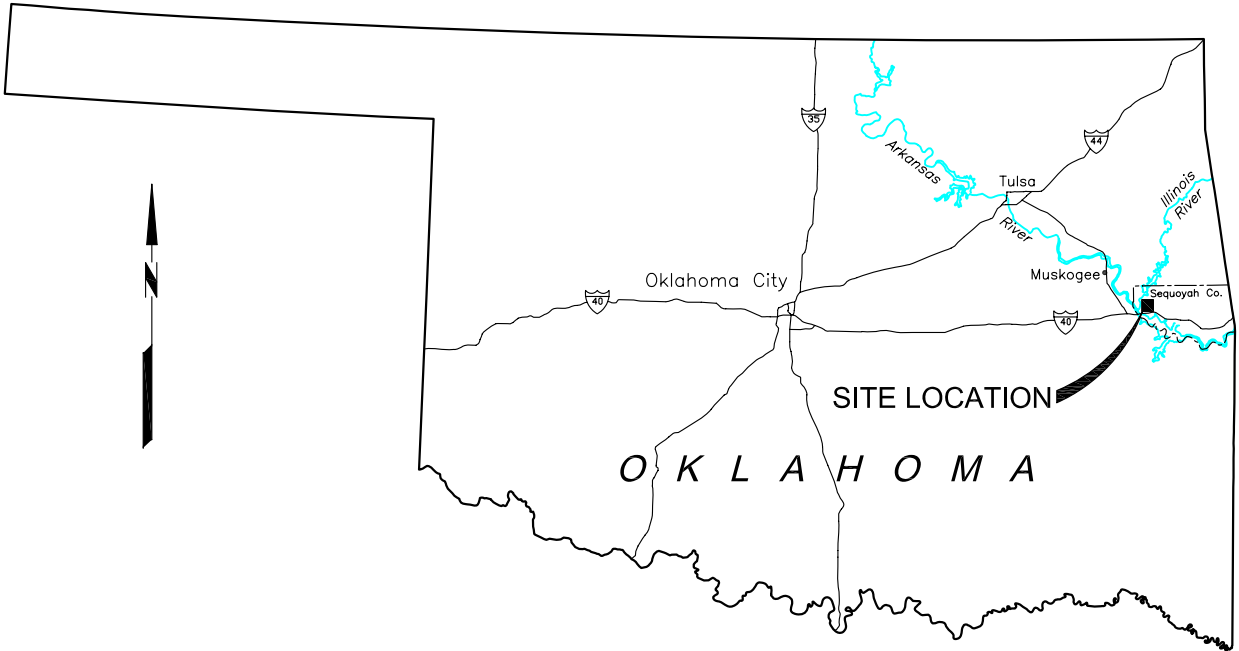
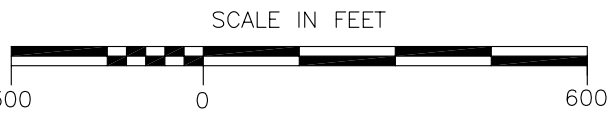
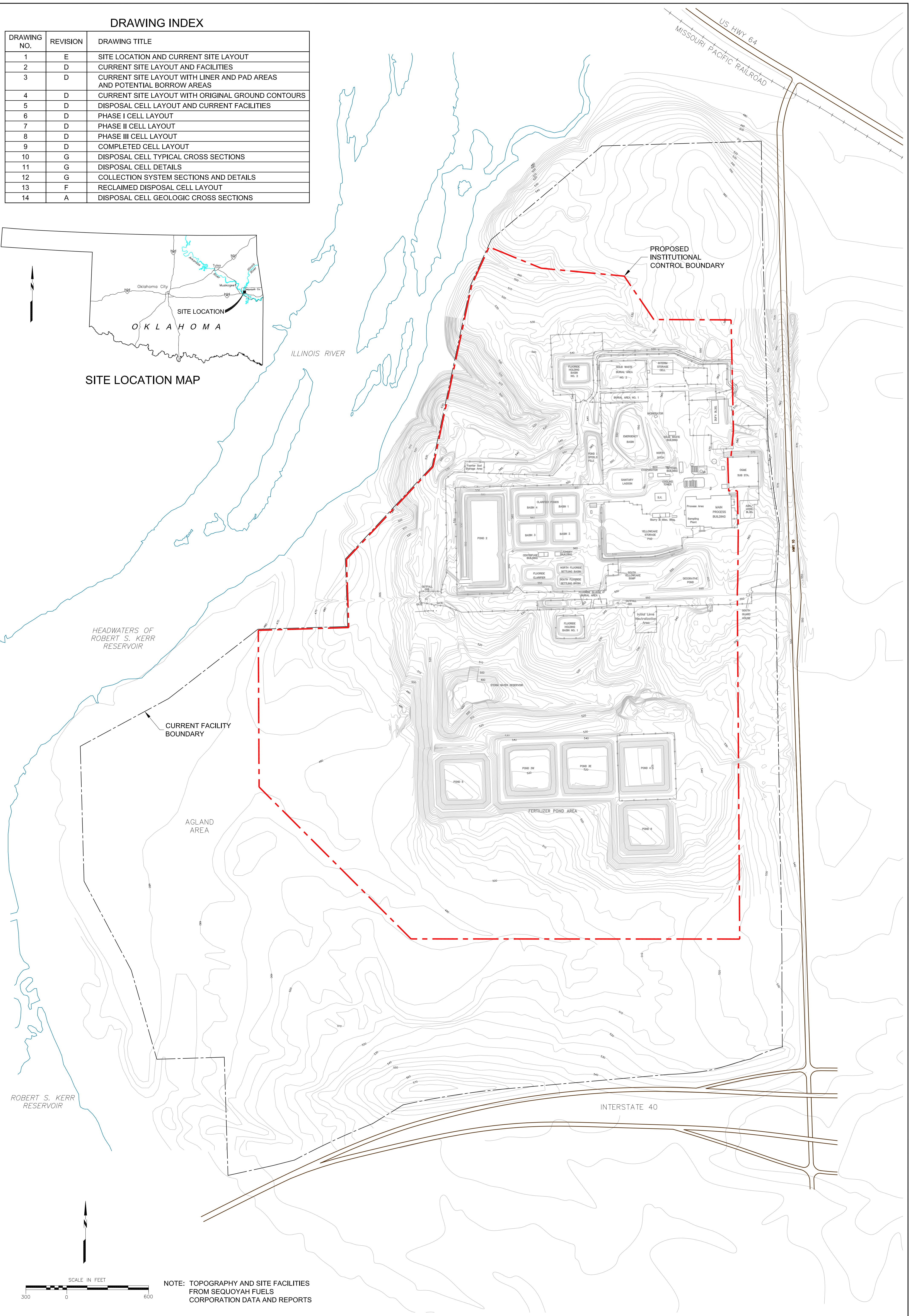


DRAWING INDEX



| DRAWING NO. | REVISION | DRAWING TITLE   |
|-------------|----------|---|
| 1           | E        | SITE LOCATION AND CURRENT SITE LAYOUT                                   |
| 2           | D        | CURRENT SITE LAYOUT AND FACILITIES                                      |
| 3           | D        | CURRENT SITE LAYOUT WITH LINER AND PAD AREAS AND POTENTIAL BORROW AREAS |
| 4           | D        | CURRENT SITE LAYOUT WITH ORIGINAL GROUND CONTOURS                       |
| 5           | D        | DISPOSAL CELL LAYOUT AND CURRENT FACILITIES                             |
| 6           | D        | PHASE I CELL LAYOUT   |
| 7           | D        | PHASE II CELL LAYOUT  |
| 8           | D        | PHASE III CELL LAYOUT   |
| 9           | D        | COMPLETED CELL LAYOUT   |
| 10          | G        | DISPOSAL CELL TYPICAL CROSS SECTIONS                                    |
| 11          | G        | DISPOSAL CELL DETAILS   |
| 12          | G        | COLLECTION SYSTEM SECTIONS AND DETAILS                                  |
| 13          | F        | RECLAIMED DISPOSAL CELL LAYOUT  |
| 14          | A        | DISPOSAL CELL GEOLOGIC CROSS SECTIONS                                   |



SITE LOCATION MAP



NOTE: TOPOGRAPHY AND SITE FACILITIES FROM SEQUOYAH FUELS CORPORATION DATA AND REPORTS

| REVISIONS          | No. | DESCRIPTION                     | BY    | CHKD.  | APPROVED | DATE  |
|--------------------|-----|---------------------------------|-------|--|----------|-------|
|                    | A   | ISSUED FOR PERMITTING           | CLS   |  |          | 12/02 |
|                    | B   | UPDATED LINER SYSTEM            | CLS   |  |          | 8/03  |
|                    | C   | DISPOSAL CELL CONSTRUCTION PLAN | CLS   |  |          | 2/04  |
|                    | D   | MODIFIED FROM SETTLEMENT AGR.   | CLS   |  |          | 2/05  |
| DESIGNERS          | E   | MODIFIED FOR DRAWING INDEX      | CLS   |  |          | 12/07 |
|                    |     |                                 |       |  |          |       |
|                    |     |                                 |       |  |          |       |
|                    |     |                                 |       |  |          |       |
|                    |     |                                 |       |  |          |       |
| ENGINEERING RECORD |     | BY                              | DATE  | PREPARED BY  |          |       |
| PRELIMINARY DESIGN |     | CLS                             | 10/02 | <br>consulting scientists and engineers<br>Fort Collins, CO<br>970 223-9600 |          |       |
| CELL OPERATIONS    |     | DAS                             | 2/04  |  |          |       |
|                    |     |                                 |       | PREPARED FOR   |          |       |
|                    |     |                                 |       |  <b>SEQUOYAH FUELS</b><br>A GENERAL ATOMICS COMPANY                         |          |       |
|                    |     |                                 |       | TITLE  |          |       |
|                    |     |                                 |       | SITE LOCATION AND<br>CURRENT SITE LAYOUT   |          |       |
|                    |     |                                 |       | PROJECT: 100734 DATE: DECEMBER 2007 DRAWING REVISION   |          |       |
|                    |     |                                 |       | SCALE: AS SHOWN ACAD FILE: SITE-01-REV-E 1   |          |       |