

Progress Energy Florida

Levy Nuclear Plant

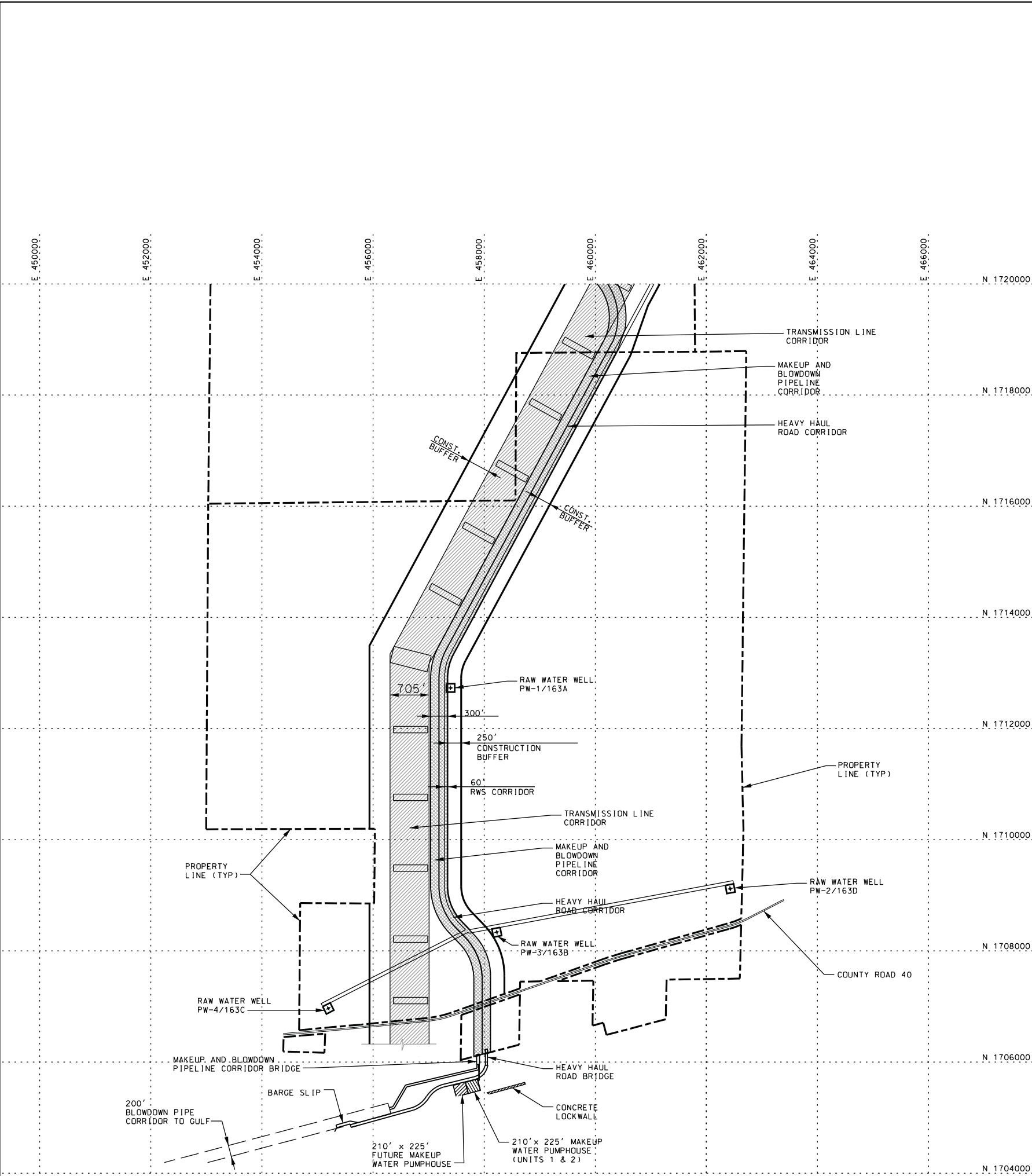
Units 1 and 2

Part 2, Final Safety Analysis Report

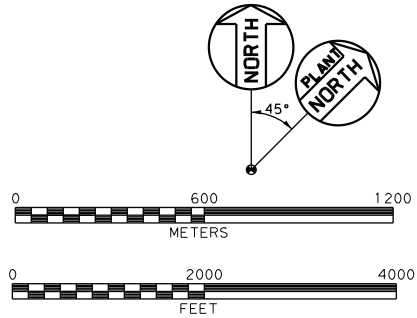
Site Layout

Figure 1.1-201 (Sheet 1 of 2)

Rev 3



NOTES:
1. THE HORIZONTAL COORDINATES ARE FLORIDA STATE PLANE COORDINATES, WEST ZONE AND ARE BASED ON THE NORTH AMERICAN DATUM OF 1983 (NAD83).



Progress Energy Florida
**Levy Nuclear Plant
Units 1 and 2
Part 2, Final Safety Analysis Report**

Site Layout

Figure 1.1-201 (Sheet 2 of 2)