

PMVictoriaESPPEm Resource

From: Terry, Tomeka
Sent: Thursday, January 19, 2012 9:49 AM
To: VictoriaESP Resource
Subject: FW: Victoria College facilities map
Attachments: Victoria College Campus Map.pdf

From: Joshua.Trembley@exeloncorp.com [<mailto:Joshua.Trembley@exeloncorp.com>]
Sent: Wednesday, January 04, 2012 2:43 PM
To: Terry, Tomeka
Subject: FW: Victoria College facilities map

With attachment, sorry!

Thanks,
JT

From: Trembley, Joshua:(GenCo)
Sent: Wednesday, January 04, 2012 1:53 PM
To: 'Terry, Tomeka'
Subject: Victoria College facilities map

Tomeka,

As discussed, please find attached markups of the Victoria College map and an aerial photograph that direct your team where to enter, park, and find the audit rooms. All of our on campus activities will take place in the "Academic Building".

From most of the Victoria hotels, the easiest way to get to the college will be to travel south on Navarro Street and then turn left on Red River. The college entrance closest to the Academic Building is directly off Red River.

Please let me know if you have questions or require additional information.

Thanks,
JT

610-765-5345

***** This e-mail and any of its attachments may contain Exelon Corporation proprietary information, which is privileged, confidential, or subject to copyright belonging to the Exelon Corporation family of Companies. This e-mail is intended solely for the use of the individual or entity to which it is addressed. If you are not the intended recipient of this e-mail, you are hereby notified that any dissemination, distribution, copying, or action taken in relation to the contents of and attachments to this e-mail is strictly prohibited and may be unlawful. If you have received this e-mail in error, please notify the sender immediately and permanently delete the original and any copy of this e-mail and any printout. Thank You. *****

Hearing Identifier: Victoria_ESP_Public
Email Number: 532

Mail Envelope Properties (0A64B42AAA8FD4418CE1EB5240A6FED160DC77F347)

Subject: FW: Victoria College facilities map
Sent Date: 1/19/2012 9:48:52 AM
Received Date: 1/19/2012 9:48:59 AM
From: Terry, Tomeka

Created By: Tomeka.Terry@nrc.gov

Recipients:
"VictoriaESP Resource" <VictoriaESP.Resource@nrc.gov>
Tracking Status: None

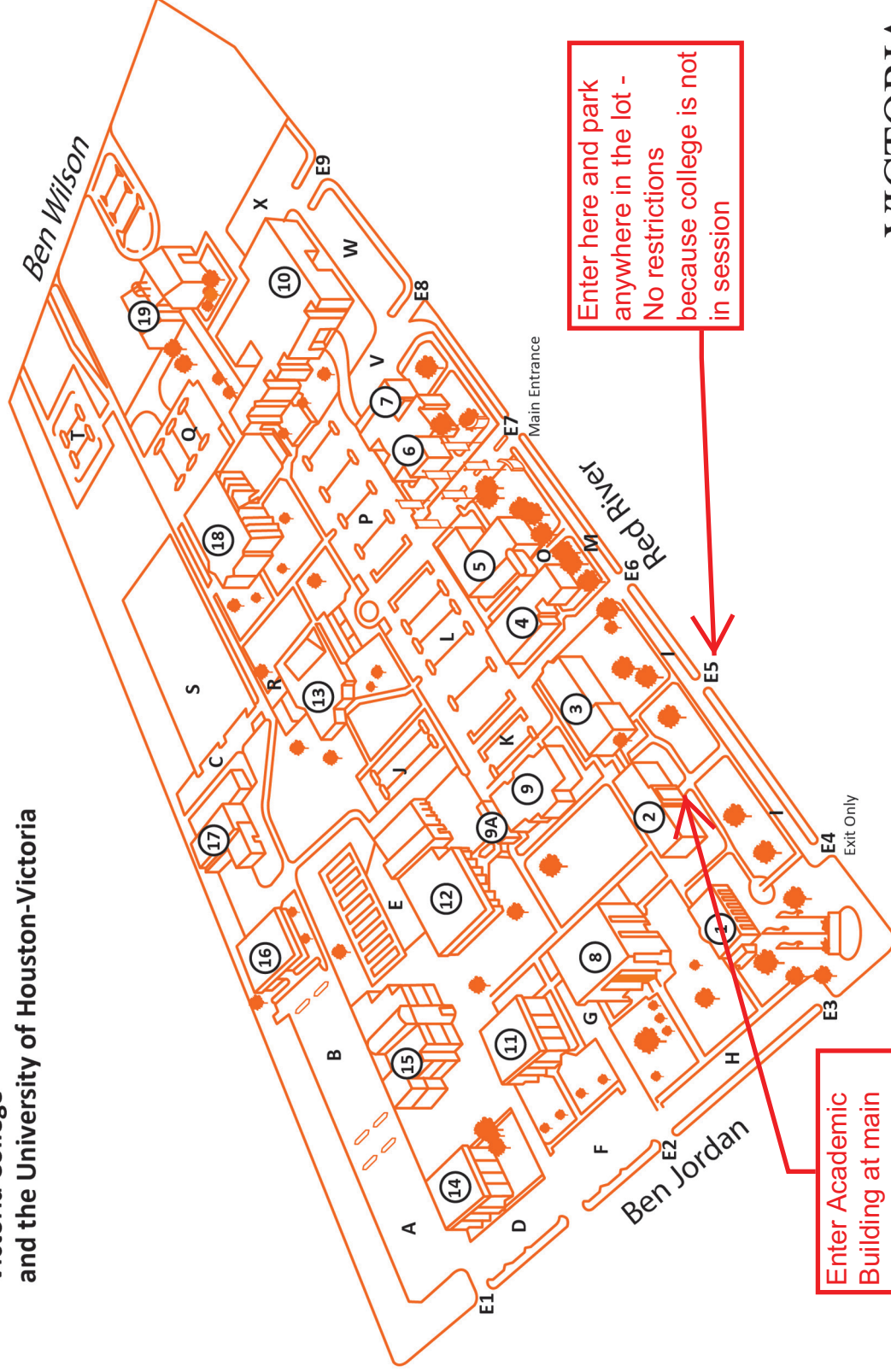
Post Office: HQCLSTR02.nrc.gov

Files	Size	Date & Time
MESSAGE	1869	1/19/2012 9:48:59 AM
Victoria College Campus Map.pdf		2362568

Options
Priority: Standard
Return Notification: No
Reply Requested: No
Sensitivity: Normal
Expiration Date:
Recipients Received:

CAMPUS MAP

Victoria College
and the University of Houston-Victoria



Enter here and park
anywhere in the lot -
No restrictions
because college is not
in session

Enter Academic
Building at main
entrance -
VCS ER Audit
rooms to the left
after entering

Victoria College

- 1 Museum of the Coastal Bend
- 2 Academic Building (AB)
- 3 Johnson Hall (JH)
- 4 Fine Arts (FA)
- 5 Auditorium
- 6 Allied Health (AH)
- 7 Johnson Symposium (JS)
- 8 Library (LIB)
- 9 Welcome Center/ Student Services
- 9A Administration Building
- 10 Health Sciences Center (HSC)
- 11 Language Building (L)
- 12 Sports & Fitness Center (SPCTR)
- 13 Student Center/Bookstore
- 14 Continuing Education Center (CECTR)
- 15 Technology Center (TC)
- 16 William Wood Vocational Building (WB)
- 17 College Services & Training Building (CST)

University of Houston-Victoria

- 18 UHV West
- 19 UHV Center

Parking Key

- A Student Parking
- B Reserved & Student Parking-HC, VP
- C Reserved & Student Parking-HC, VP
- D Reserved & Student Parking-VP
- E Reserved & Student Parking-VP
- F Reserved & Student Parking
- G Reserved Parking-HC
- H Reserved & Student Parking-HC, VP
- I Reserved & Student Parking-HC, VP
- J Reserve Parking-HC
- K Reserved Parking-HC, VP
- L Reserved & Student Parking-HC, VP
- M Student Parking-HC, VP
- N Reserved & Student Parking-HC, VP
- O Reserved & Student Parking-HC, VP
- P Reserved & Student Parking-HC, VP
- Q Reserved & Student Parking-HC, VP
- R Reserved Parking
- S Student Parking, Low Clearance 8'6"
- T Student Parking, VP / Special Events
- U Reserved & Student Parking-HC, VP
- V Special Events Parking
- W Student Parking
- X Reserved Parking

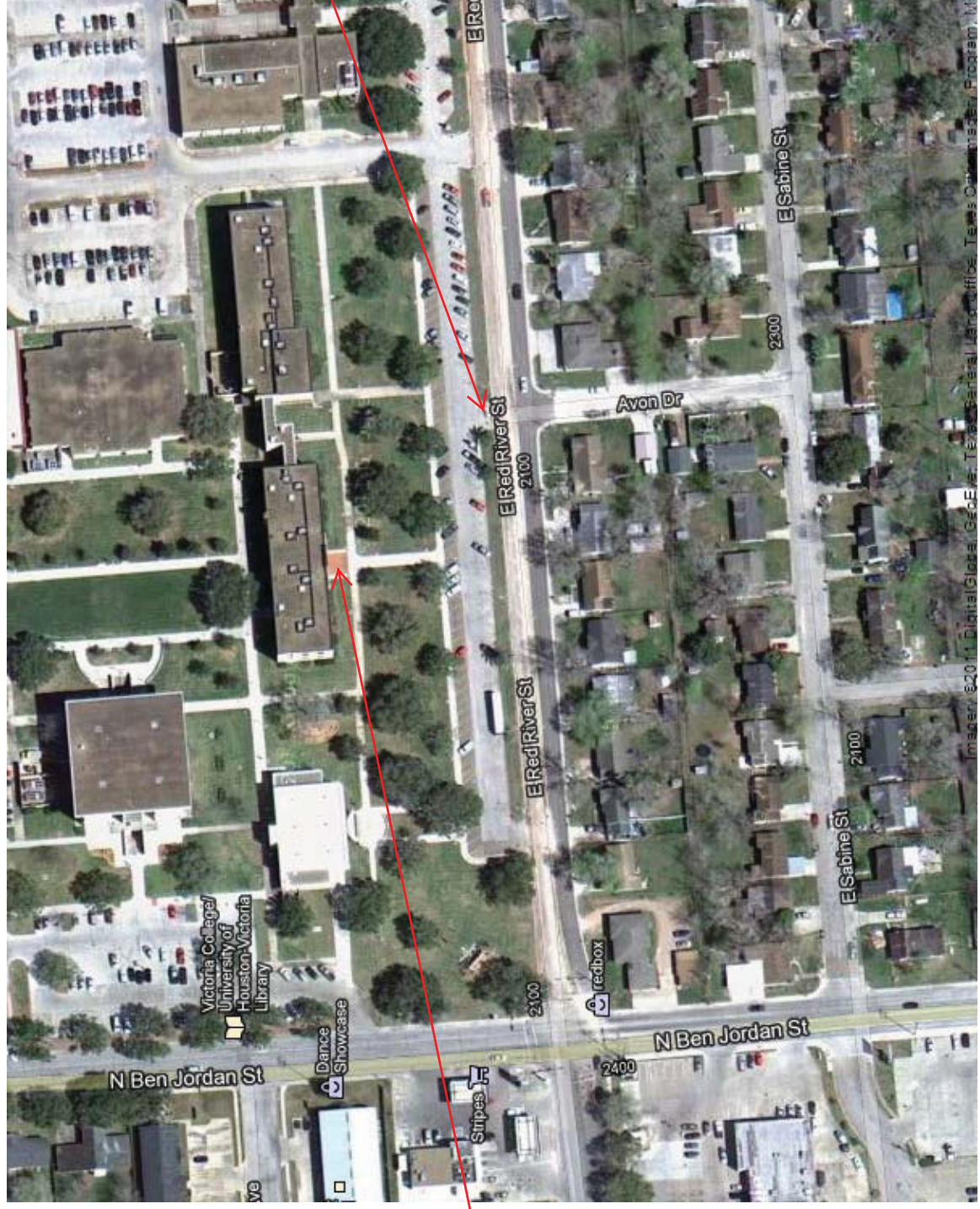
HC-Handicapped Parking

VP-Visitor Parking

E - Entrances

VICTORIA
COLLEGE

Victoria College, 2200 East Red River Street, Victoria, TX 77901-4494
Academic Building



Enter here
and park
anywhere in
the lot -
No
restrictions
because
college is
not in
session

Enter Academic
Building at main
entrance -
VCS ER Audit
rooms to the left
after entering