



Nuclear Regulatory Commission  
Exhibit # - APL000032-00-BD01  
Docket # - 05200016  
Identified: 01/26/2012

Admitted: 01/26/2012  
Rejected:

Withdrawn:  
Stricken:

APL000032  
10/21/2011

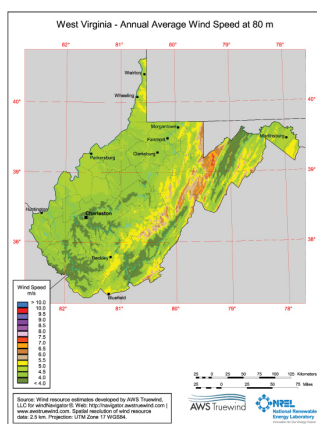
## WIND ENERGY FACTS: WEST VIRGINIA

### The wind energy industry means economic development for West Virginians

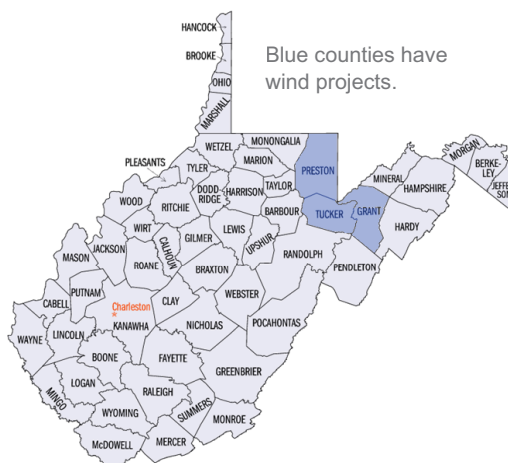
#### WIND PROJECTS AND POTENTIAL

Currently online: 431 Megawatts (MW)  
Added in 2010: 101 MW  
Under construction: 147 MW  
Wind projects in queue: 1,045 MW

Percentage of West Virginia power provided by wind in 2010: 1.2%



West Virginia wind farms now online could power the equivalent of 100,000 homes.



Blue counties have wind projects.

State wind resource: 1,883 MW at 80 meters hub heights

According to a resource assessment from the National Renewable Energy Lab, West Virginia's wind resource could provide 17 percent of the state's current electricity needs.

#### ECONOMIC AND ENVIRONMENTAL BENEFITS

Investment in wind power is an investment in jobs, including jobs in operations and maintenance, construction, manufacturing and many support sectors. In addition, wind power projects produce lease payments for landowners and increase the tax base of communities.

- Total direct and indirect jobs supported in 2010: 100-500
- Annual property tax payments by wind project owners: \$650,000
- Annual land lease payments: \$1.3 million

Generating wind power creates no emissions and uses no water. The wind power installed in West Virginia will avoid 725,000 metric tons of carbon dioxide emissions annually.

#### WEST VIRGINIA POLICY

In 2009, West Virginia passed an Alternative and Renewable Energy Portfolio Standard, requiring certain utilities to derive 25 percent of their sales from alternative and renewable energy resources by 2025.

Published August 2011 | Calculations based on national and state averages

FOR MORE INFORMATION, PLEASE CONTACT: [windmail@awea.org](mailto:windmail@awea.org)

AMERICAN WIND ENERGY ASSOCIATION  
WWW.AWEA.ORG | 202.383.2500 | 1501 M St. NW, Suite 1000, Washington, D.C.

