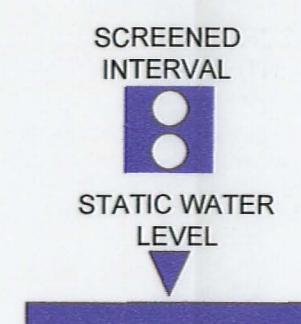
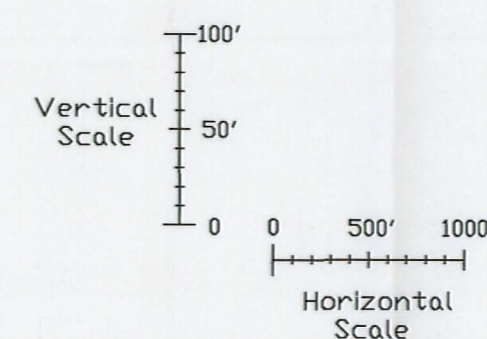
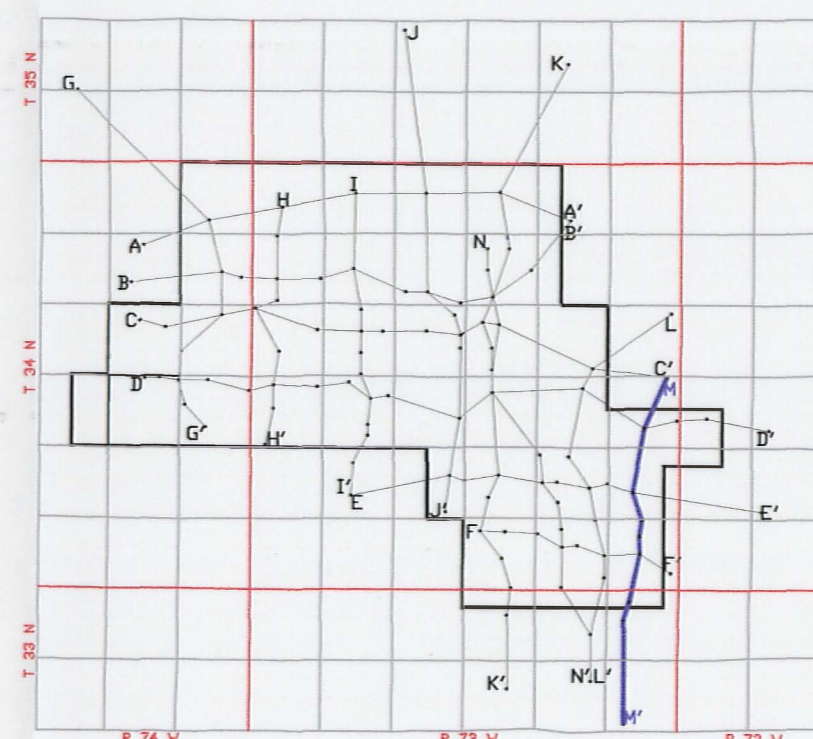
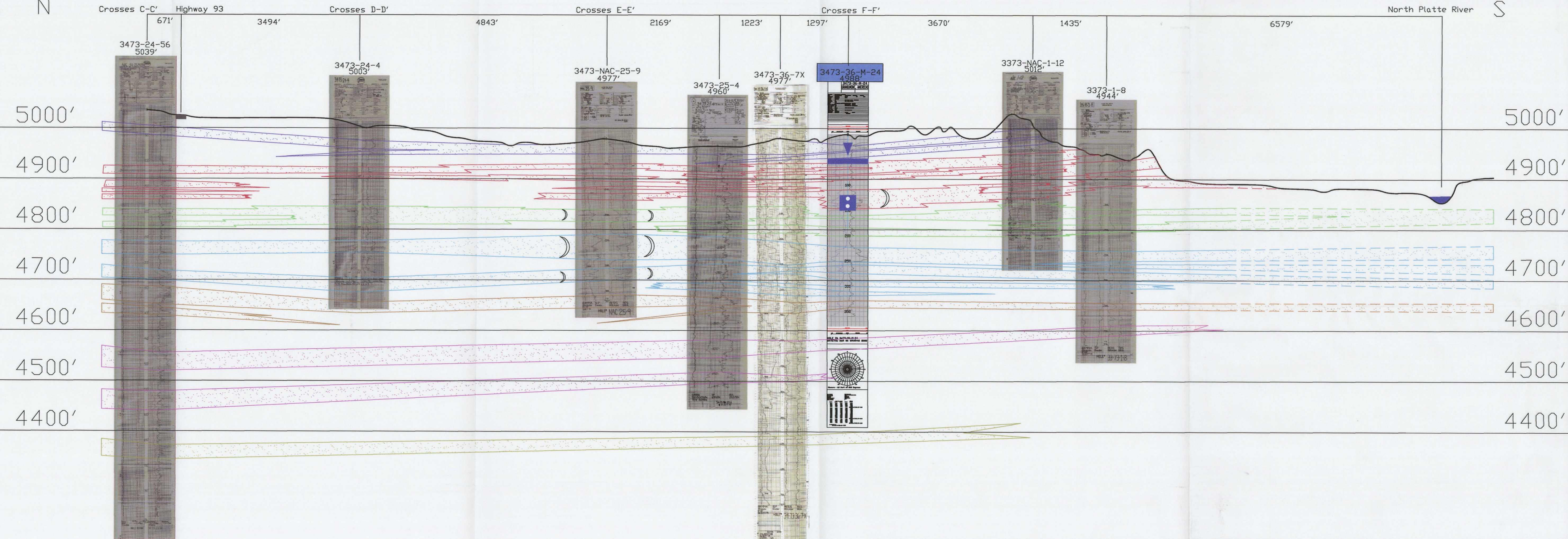


M
N

M'
S



LEGEND

- 100 SAND
- 90 SAND
- 80 SAND
- 70 SAND
- 60 SAND
- 50 SAND
- ROLL FRONT
- NTS
- NOT TO SCALE
- LOOKING EAST

uraniumone™
investing in our energy
907 North Poplar St., Suite 260, Casper, WY 82601 307-234-8235

**LUDEMAN PROJECT
CROSS SECTION M-M'**
T.34N., R.73W., Sec. 24,25,36
T.33N., R.73W., Sec. 1,12
CONVERSE COUNTY, WYOMING

| | | | | | |
|----------|------------|-------------|------------|----------|---------|
| Date: | 02/09/2009 | By: | TC | Checked: | |
| Rev. No. | 1 | Description | Date | By | FIGURE: |
| | | | 07/28/2009 | TC | 2-16 |
| | | | | | |
| | | | | | |