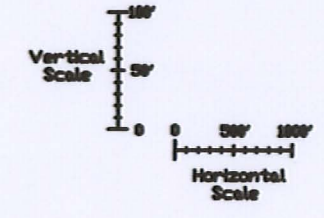
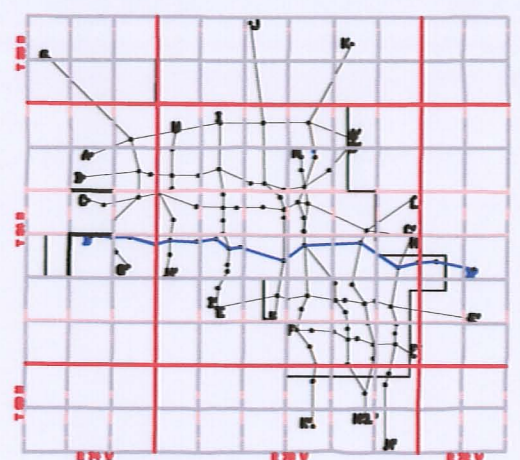
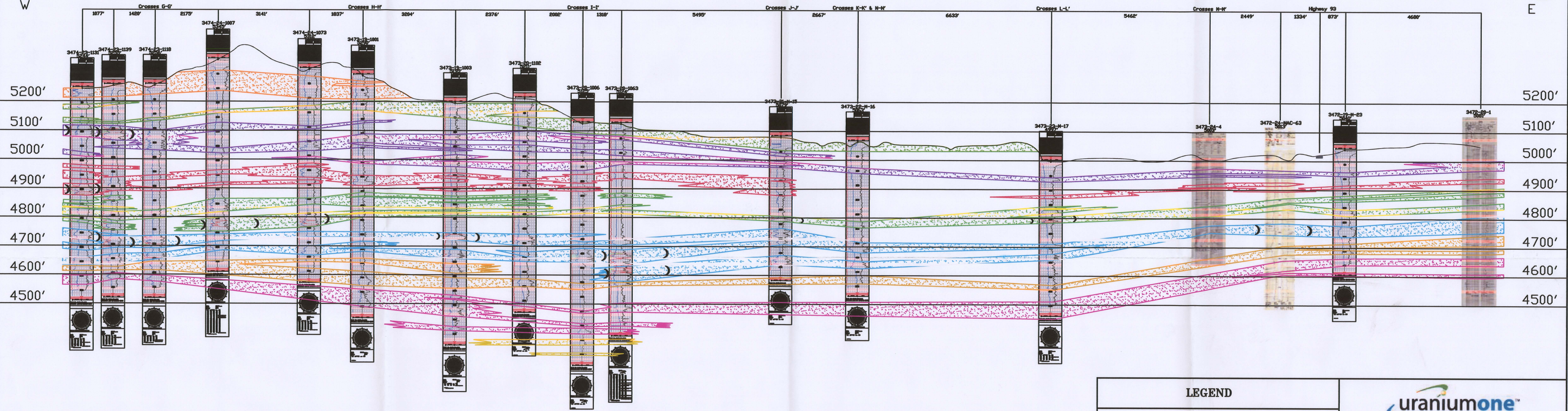


D
W

D'
E



LEGEND

120 SAND	[Pattern]
110 SAND	[Pattern]
100 SAND	[Pattern]
90 SAND	[Pattern]
80 SAND	[Pattern]
70 SAND	[Pattern]
60 SAND	[Pattern]
50 SAND	[Pattern]
40 SAND	[Pattern]
ROLL FRONT	[Pattern]
NTS	[Pattern]

NOT TO SCALE
LOOKING NORTH

uraniumone™
investing in our energy
907 North Poplar St., Suite 260, Casper, WY 82601 307-234-8235

LUDEMAN PROJECT
CROSS SECTION D-D'
T.34N., R.74W., Sec. 23,24
T.34N., R.73W., Sec. 19,20,21,22,23,24
T.34N., R.72W., Sec. 19,20
CONVERSE COUNTY, WYOMING

Date:	02/09/2009	By:	TC	Checked:	
Rev. No.	1	Description		Date	07/28/2009
				By	TC

FIGURE:
3.3-6

D04