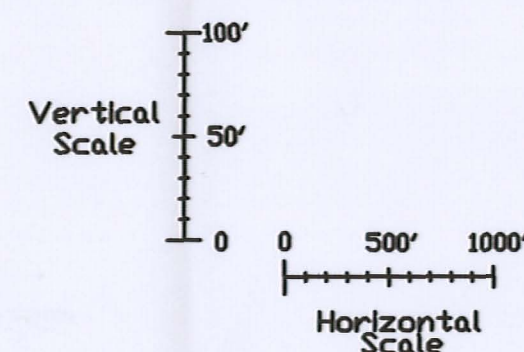
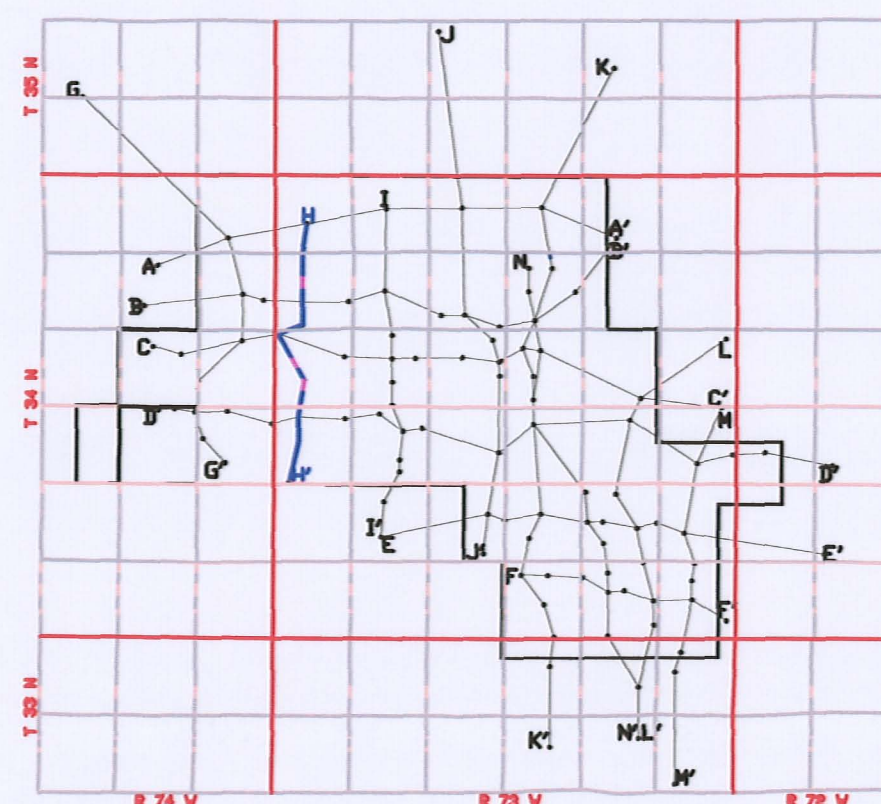
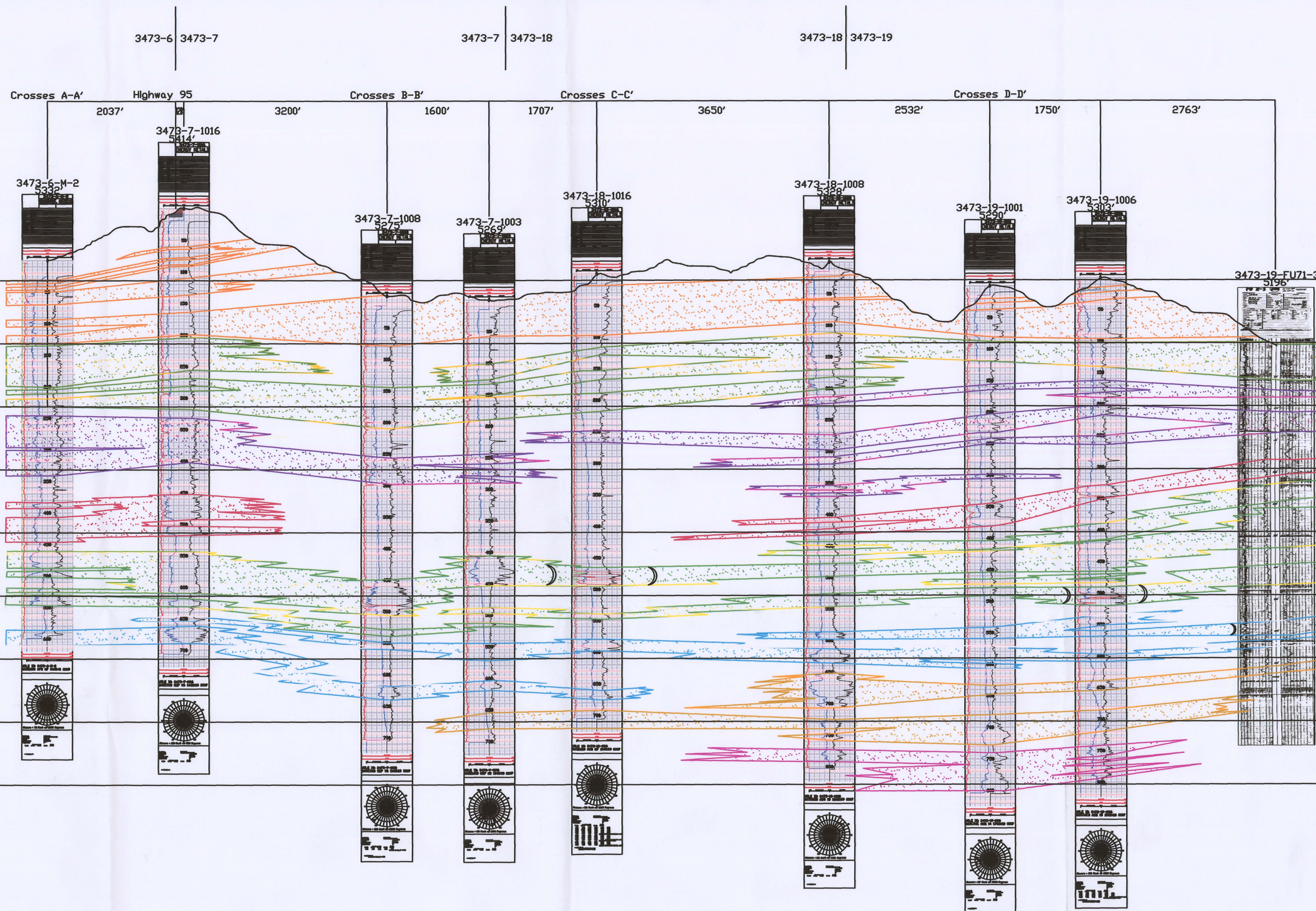


H  
N

H'  
S



### LEGEND

- 120 SAND
- 110 SAND
- 100 SAND
- 90 SAND
- 80 SAND
- 70 SAND
- 60 SAND
- 50 SAND

ROLL FRONT  
NTS

NOT TO SCALE

LOOKING EAST



907 North Poplar St., Suite 260, Casper, WY 82601 307-234-8235

### LUDEMAN PROJECT CROSS SECTION H-H'

T.34N., R.73W., Sec. 6,7,18,19

CONVERSE COUNTY, WYOMING

Date: 02/09/2009 By: TC Checked:

Rev. No. Description Date By  
1 07/28/2009 TC

FIGURE:  
3.3-10

D08