

E

W

3473-29 3473-28

3473-28 3473-27

3473-27 3473-26

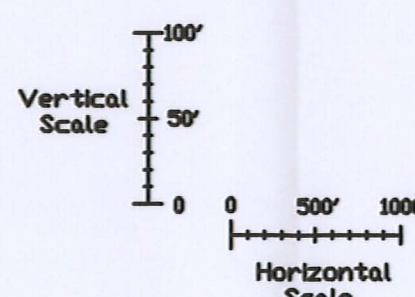
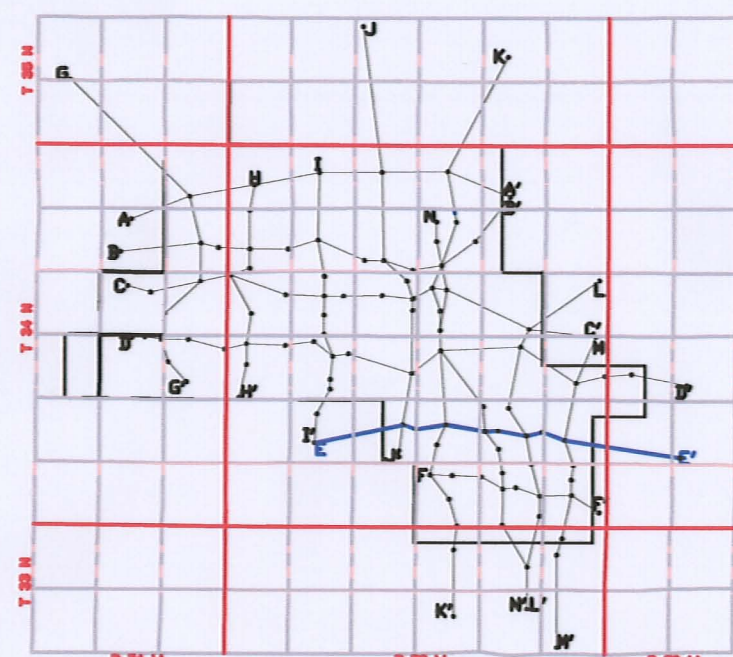
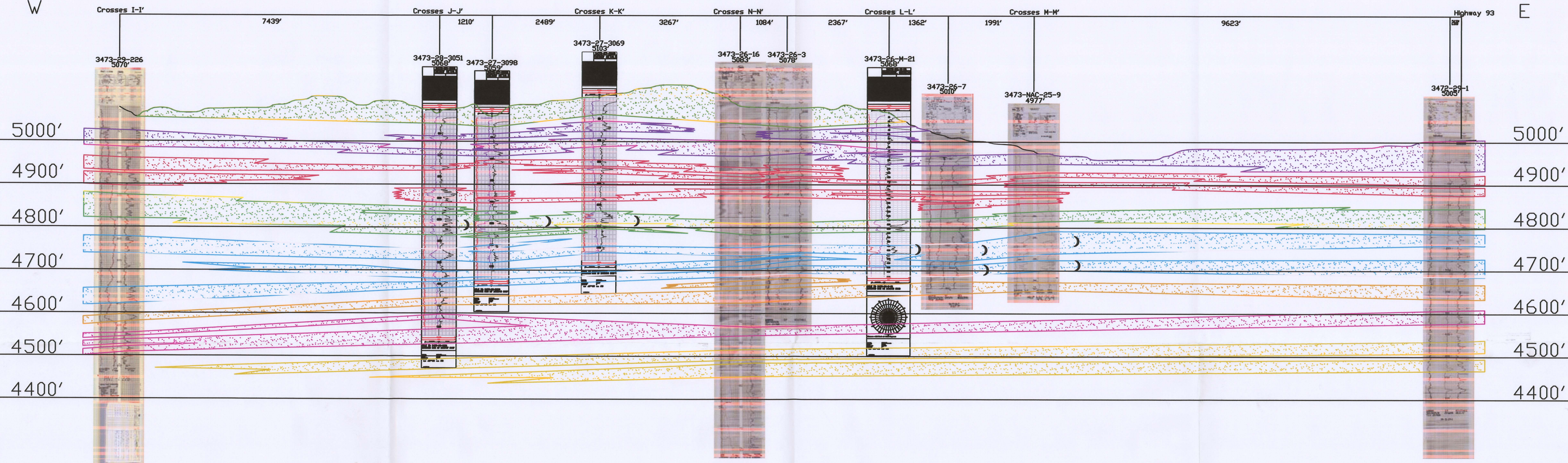
3473-26 3473-25

3473-25 3472-30

3472-30 3472-29

E'

E



## LEGEND

110 SAND	
100 SAND	
90 SAND	
80 SAND	
70 SAND	
60 SAND	
50 SAND	
40 SAND	

ROLL FRONT

NTS

NOT TO SCALE

LOOKING NORTH



907 North Poplar St., Suite 260, Casper, WY 82601 307-234-8235

LUDEMAN PROJECT  
CROSS SECTION E-E'T.34N., R.73W., Sec. 29,28,27,26,25  
T.34N., R.72W., Sec. 30,29  
CONVERSE COUNTY, WYOMING

Date: 02/09/2009 By: TC Checked:

Rev. No.	Description	Date	By	FIGURE:
1		07/28/2009	TC	3.3-7

DOS