

M
N

M'
S

3473-13 3473-24 3473-24 3473-25 3473-25 3473-36 3473-36 3373-1 3373-12

Crosses C-C' Highway 93 Crosses D-D' Crosses E-E' Crosses F-F' North Platte River

671' 3494' 4843' 2169' 1223' 1297' 3670' 1435' 6579'

3473-24-56
5039'

3473-24-4
5003'

3473-NAC-25-9
4977'

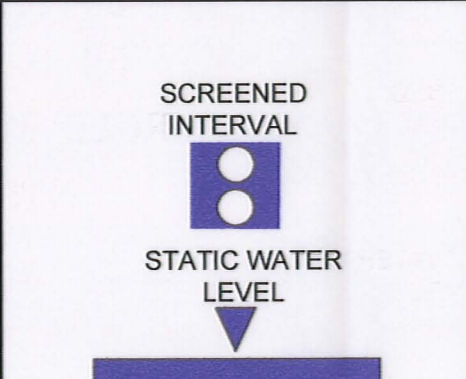
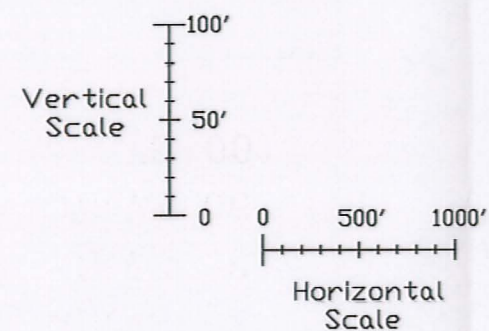
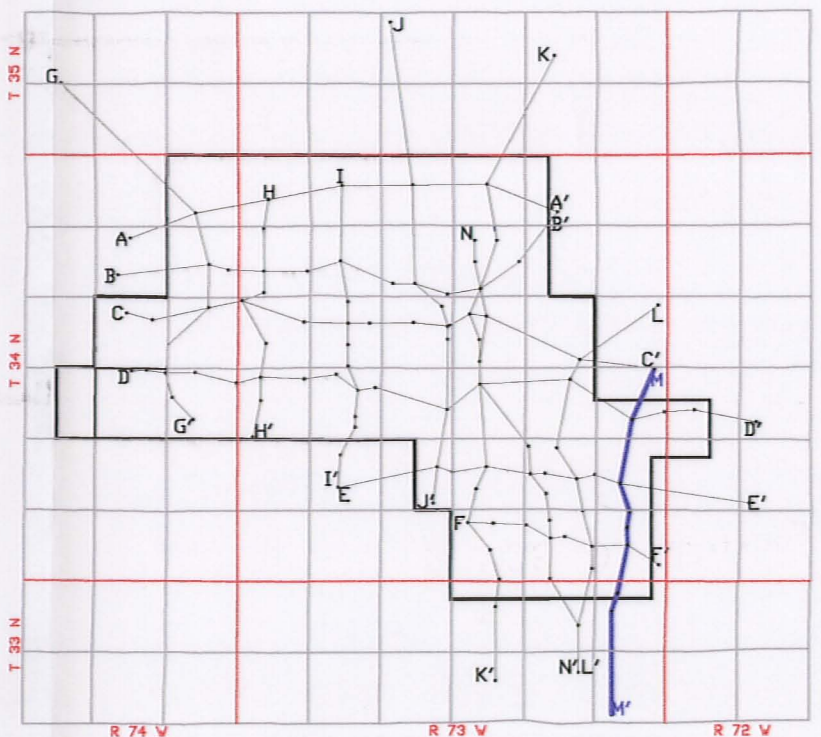
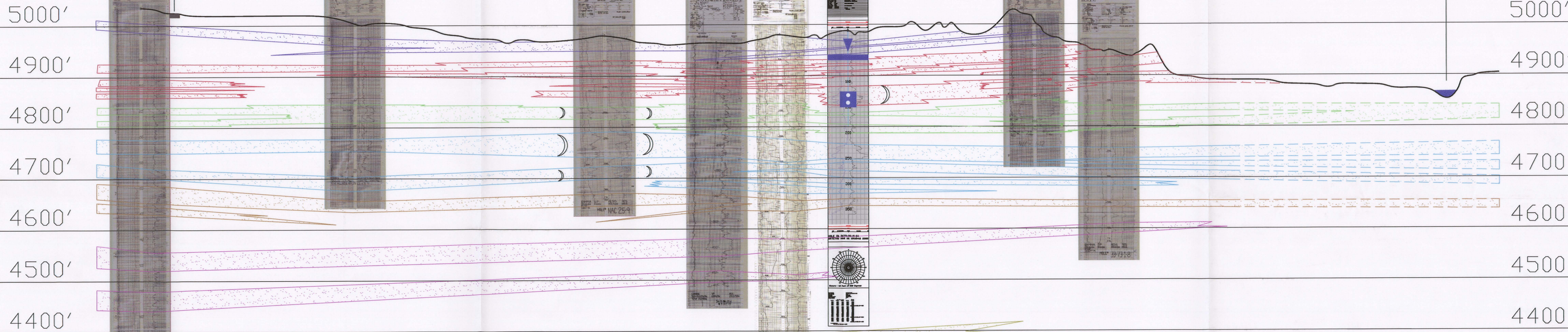
3473-25-4
4960'

3473-36-7X
4977'

3473-36-M-24
4988'

3373-NAC-1-12
5012'

3373-1-8
4944'



LEGEND

- 100 SAND
- 90 SAND
- 80 SAND
- 70 SAND
- 60 SAND
- 50 SAND
- ROLL FRONT
- NTS

NOT TO SCALE

LOOKING EAST



907 North Poplar St., Suite 260, Casper, WY 82601 307-234-8235

LUDEMAN PROJECT CROSS SECTION M-M'

T. 34N., R. 73W., Sec. 24, 25, 36
T. 33N., R. 73W., Sec. 1, 12
CONVERSE COUNTY, WYOMING

Date: 02/09/2009 By: TC Checked:

Rev. No.	Description	Date	By
1		07/28/2009	TC

FIGURE:
2-16

DOS