

F

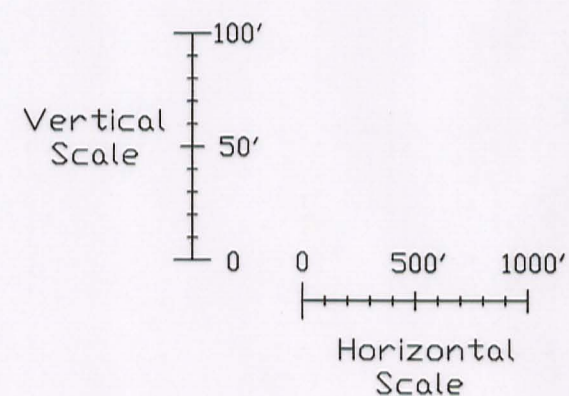
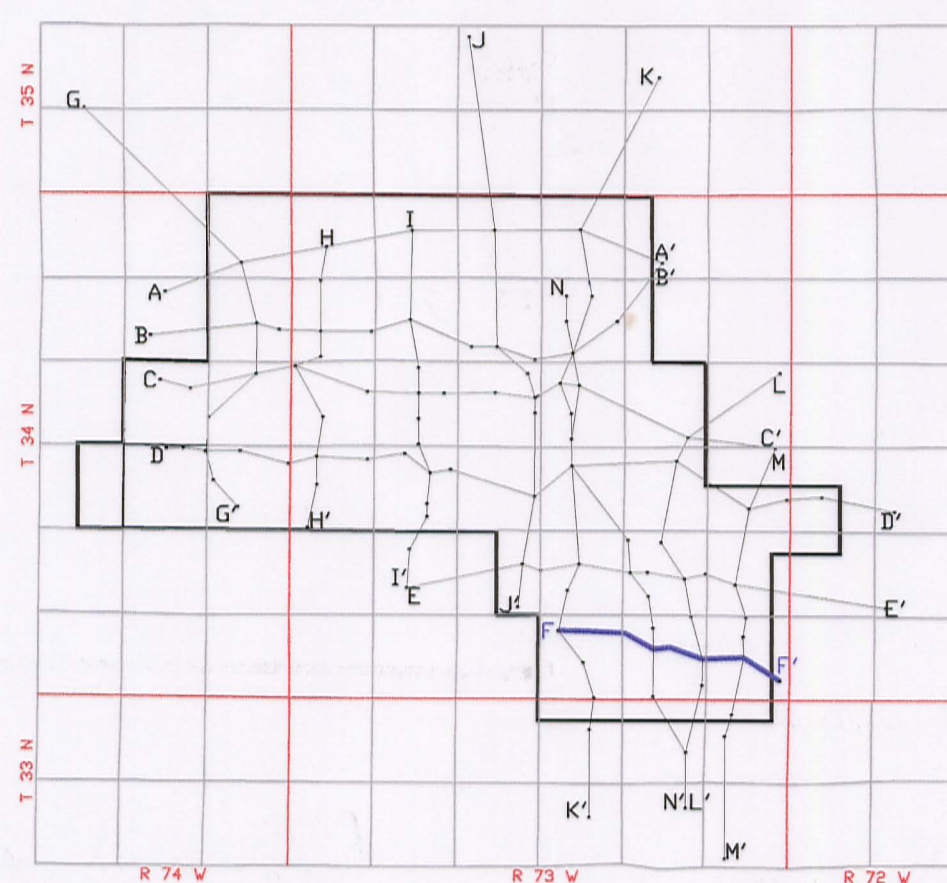
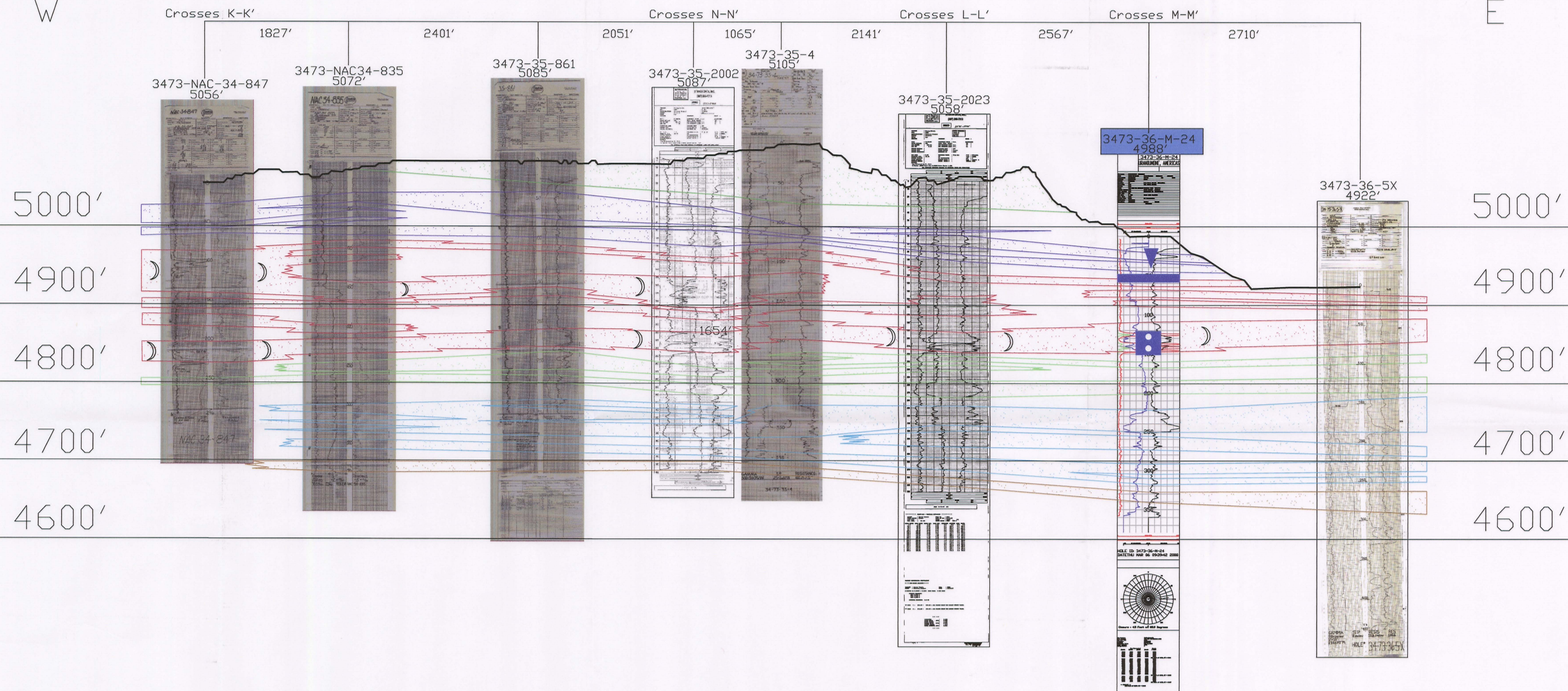
W

3473-34 3473-35

3473-35 3473-36

F'

E

SCREENED  
INTERVALSTATIC WATER  
LEVEL

## LEGEND

110 SAND	
100 SAND	
90 SAND	
80 SAND	
70 SAND	
60 SAND	

ROLL FRONT

NTS

NOT TO SCALE

LOOKING NORTH

**uraniumone™**  
investing in our energy

907 North Poplar St., Suite 260, Casper, WY 82601 307-234-8235

## LUDEMAN PROJECT

## CROSS SECTION F-F'

T.34N., R.73W., Sec. 34,35,36

CONVERSE COUNTY, WYOMING

Date: 02/09/2009 By: TC Checked:

Rev. No.	Description	Date	By
1		07/28/2009	TC

FIGURE:  
2-14

D03