

D

W

3474-23 3474-24

3474-24 3473-19

3473-19 3473-20

3473-20 3473-21

3473-21 3473-22

3473-22 3473-23

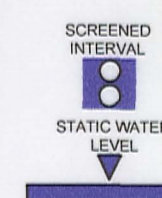
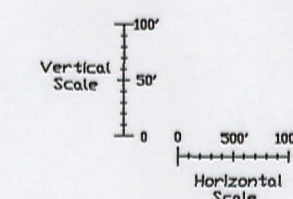
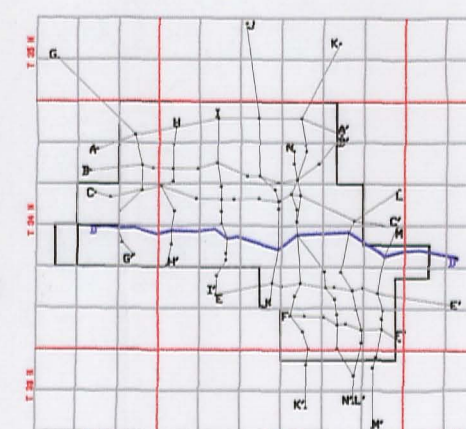
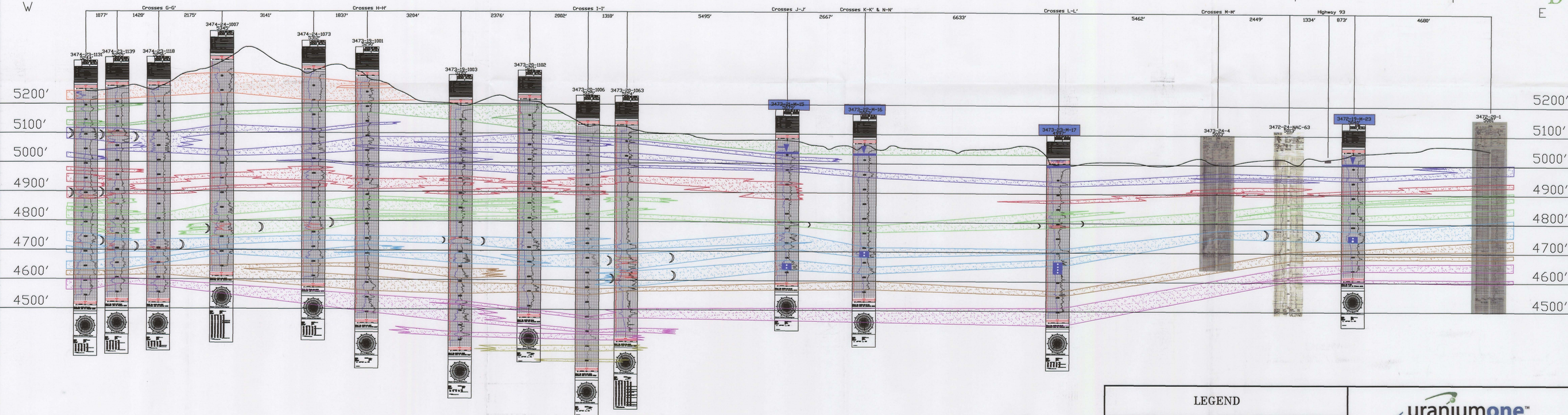
3473-23 3473-24

3473-24 3472-19

3472-19 3472-20

D'

E



LEGEND

120 SAND	
110 SAND	
100 SAND	
90 SAND	
80 SAND	
70 SAND	
60 SAND	
50 SAND	
40 SAND	
ROLL FRONT	

NTS

NOT TO SCALE

LOOKING NORTH

uraniumone™
investing in our energy

907 North Poplar St., Suite 260, Casper, WY 82601 307-234-8235

**LUDEMAN PROJECT
CROSS SECTION D-D'**

T.34N., R.74W., Sec. 23,24
T.34N., R.73W., Sec. 19,20,21,22,23,24
T.34N., R.72W., Sec. 19,20
CONVERSE COUNTY, WYOMING

Date:	02/09/2009	By:	TC	Checked:	
Rev. No.		Description	Date	By	FIGURE:
1			07/28/2009	TC	2-13

D02