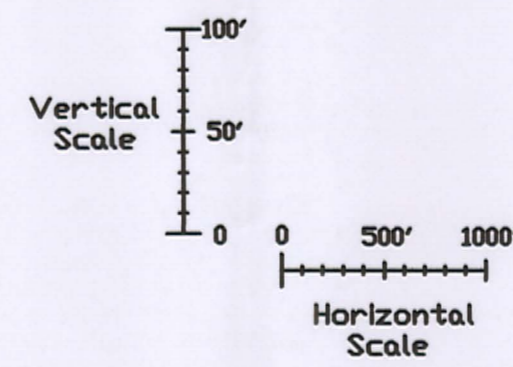
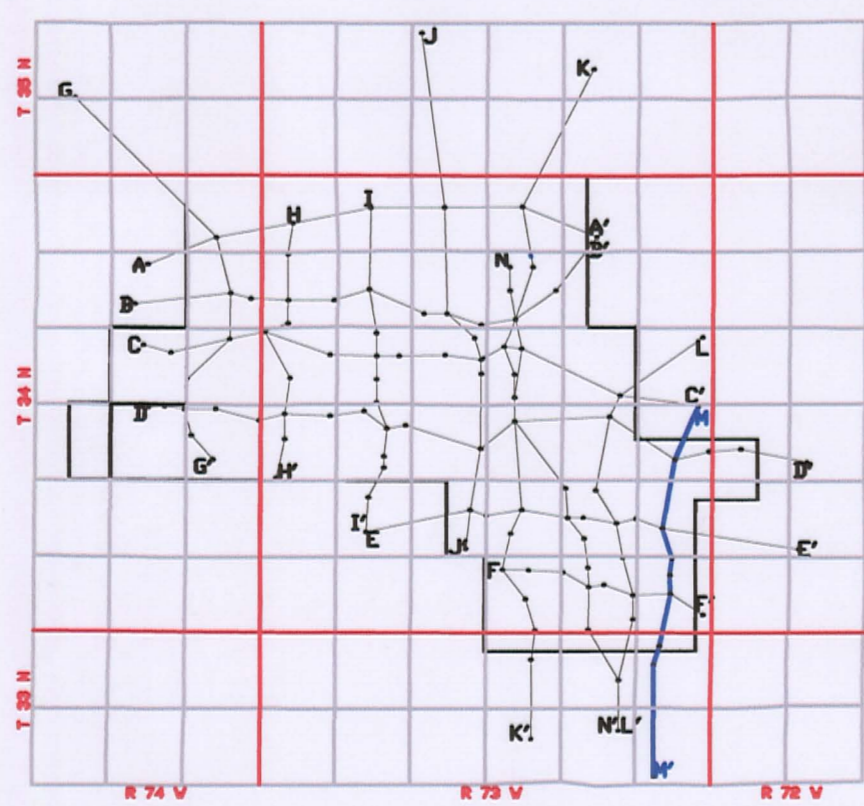
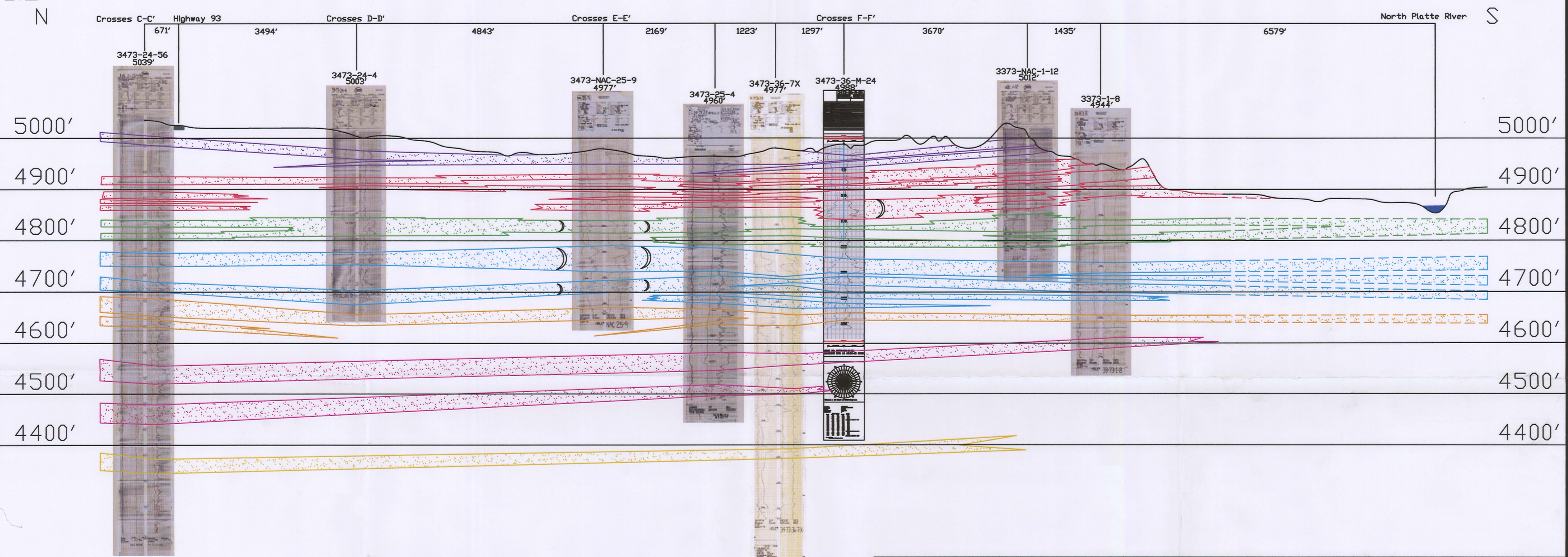


M

M'



LEGEND

- 100 SAND
 - 90 SAND
 - 80 SAND
 - 70 SAND
 - 60 SAND
 - 50 SAND
 - ROLL FRONT
 - NTS
- NOT TO SCALE

LOOKING EAST



907 North Poplar St., Suite 260 ,Casper, WY 82601 307-234-8235

LUDEMAN PROJECT
CROSS SECTION M-M'
T.34N., R.73W., Sec. 24,25,36
T.33N., R.73W., Sec. 1,12
CONVERSE COUNTY, WYOMING

Date:	02/09/2009	By:	TC	Checked:	
Rev. No.	1	Description		Date	07/28/2009
				By	TC

FIGURE:
2.6-15

0215 013