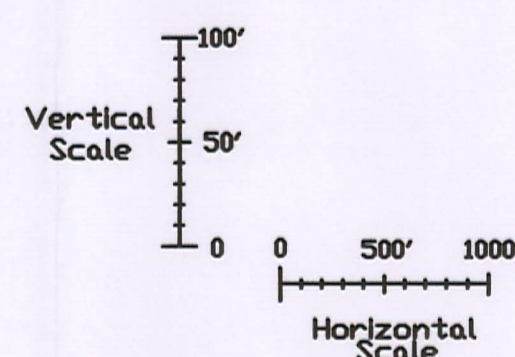
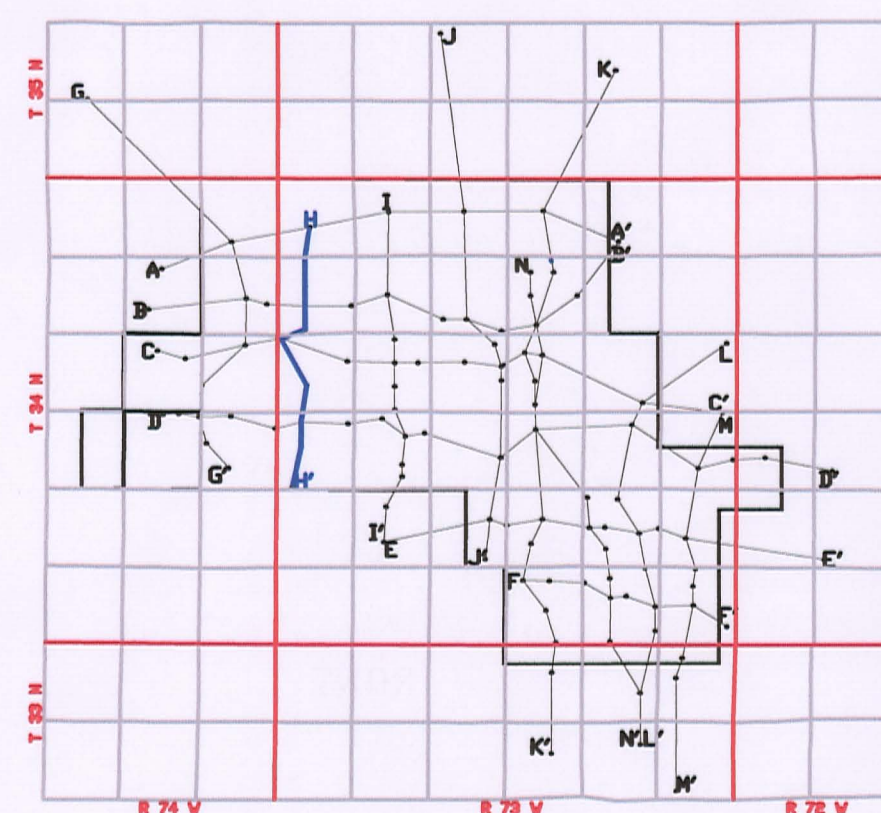
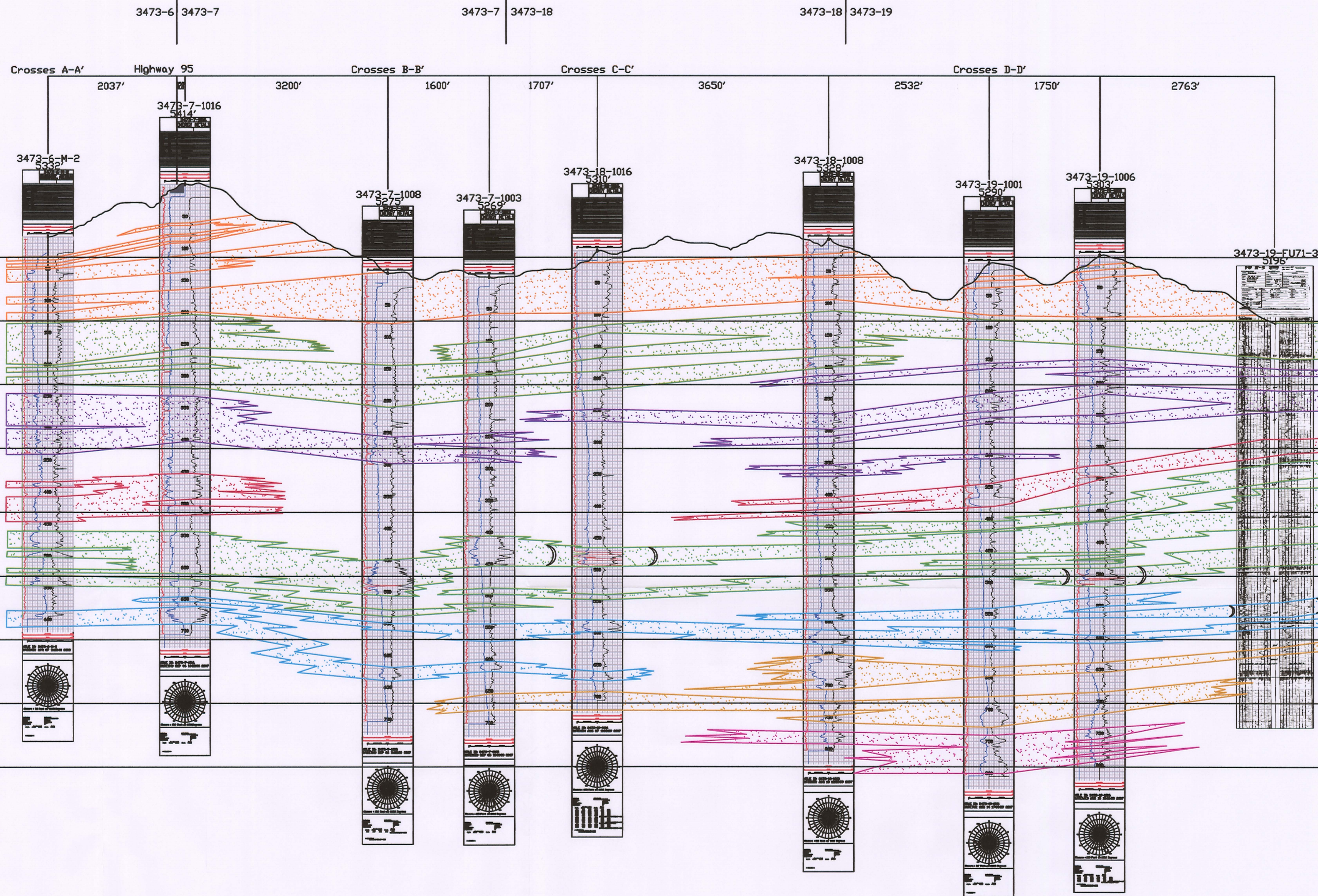


H
N

H'
S



LEGEND

- 120 SAND
- 110 SAND
- 100 SAND
- 90 SAND
- 80 SAND
- 70 SAND
- 60 SAND
- 50 SAND

ROLL FRONT
NTS

NOT TO SCALE

LOOKING EAST



907 North Poplar St., Suite 260, Casper, WY 82601 307-234-8235

LUDEMAN PROJECT CROSS SECTION H-H'

T.34N., R.73W., Sec. 6,7,18,19
CONVERSE COUNTY, WYOMING

Date: 02/09/2009 By: TC Checked:

Rev. No. Description Date By

1 07/28/2009 TC

FIGURE:

2.6-10

7 0518 2008