

F

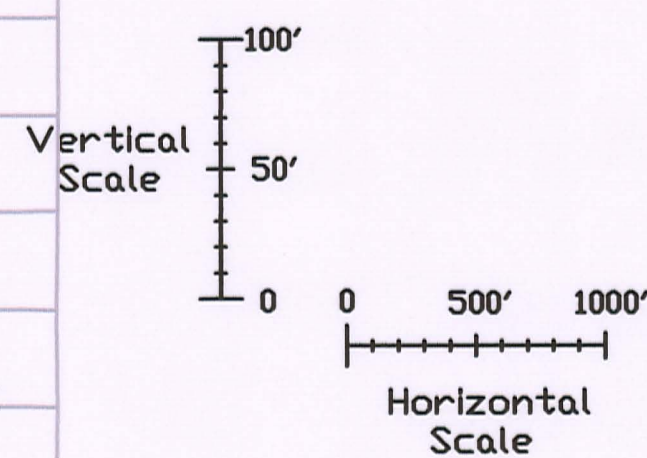
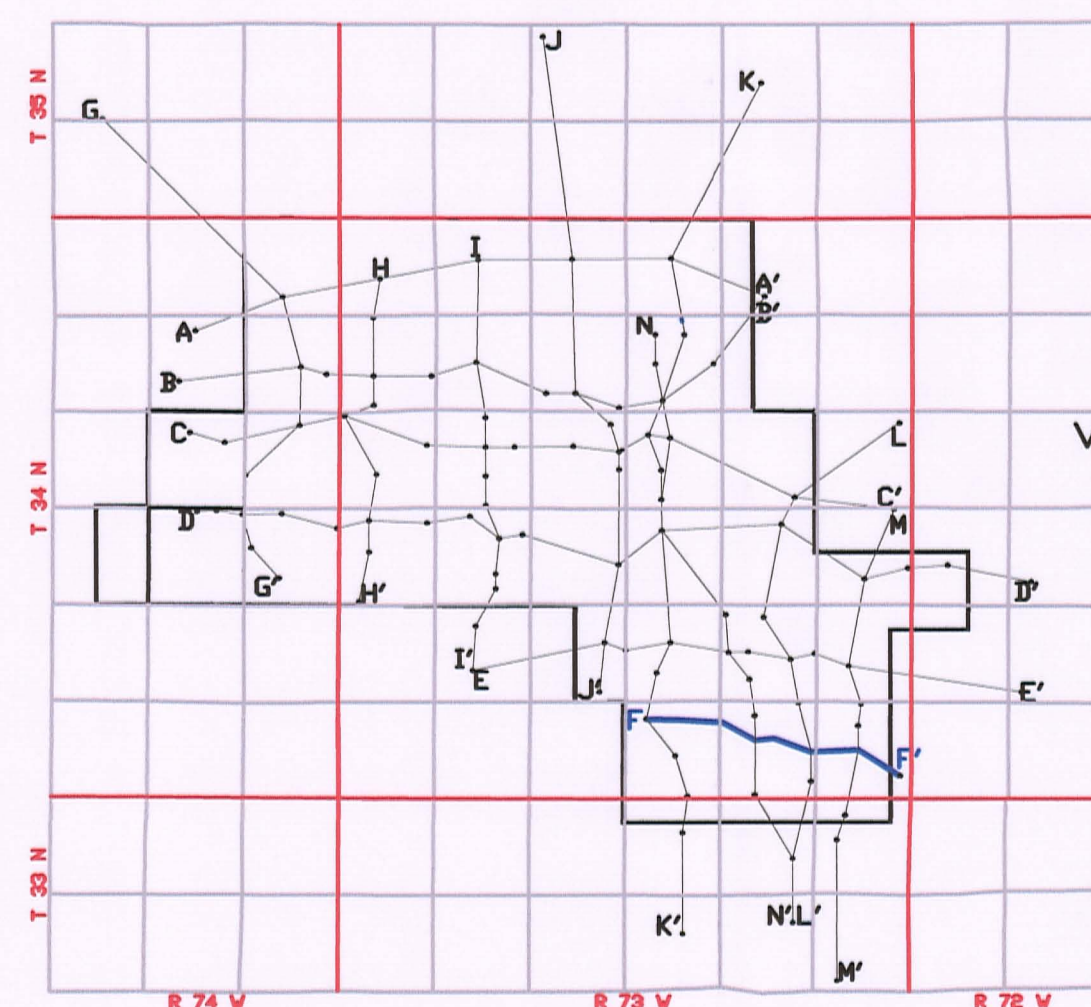
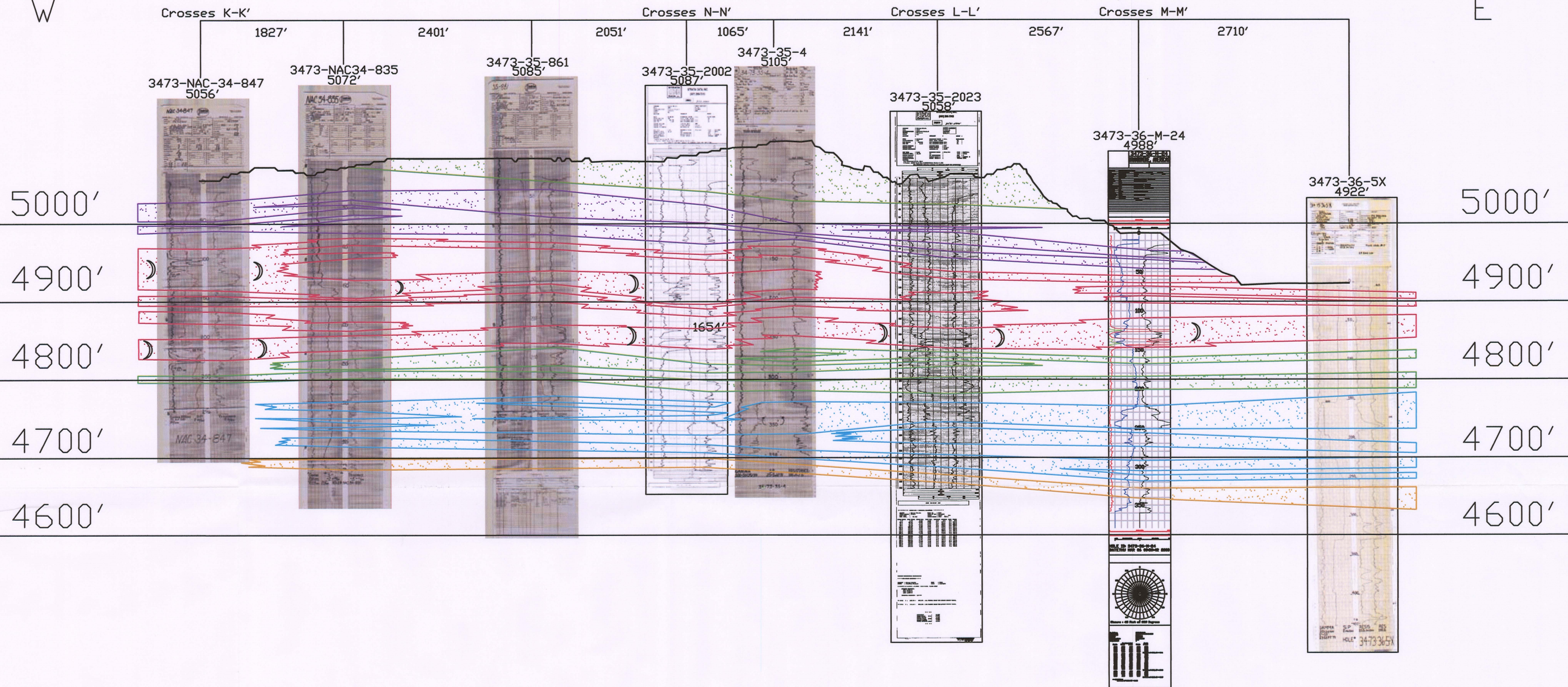
W

3473-34 | 3473-35

3473-35 | 3473-36

F'

E



## LEGEND

110 SAND	
100 SAND	
90 SAND	
80 SAND	
70 SAND	
60 SAND	

ROLL FRONT  
NTS

NOT TO SCALE

LOOKING NORTH

**uraniumone™**  
investing in our energy

907 North Poplar St., Suite 260, Casper, WY 82601 307-234-8235

## LUDEMAN PROJECT

## CROSS SECTION F-F'

T.34N., R.73W., Sec. 34,35,36  
CONVERSE COUNTY, WYOMING

Date:	02/09/2009	By:	TC	Checked:	
Rev. No.	1	Description		Date	07/28/2009
				By	TC

FIGURE:

2.6-8

013-006