

E

W

3473-29 3473-28

3473-28 3473-27

3473-27 3473-26

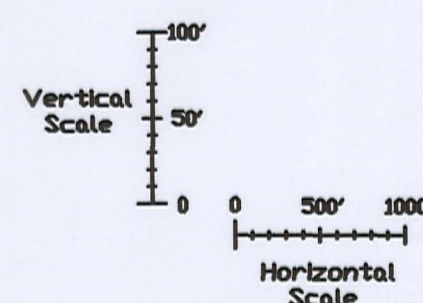
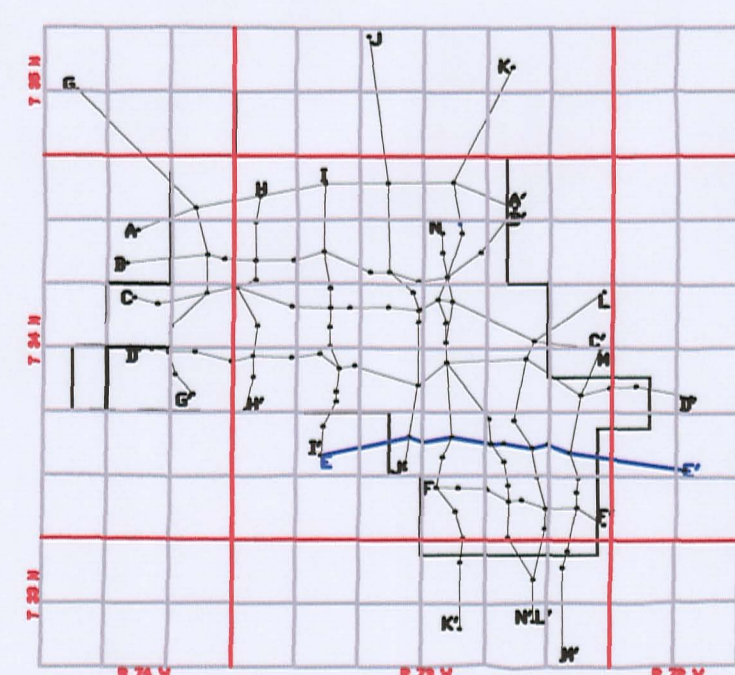
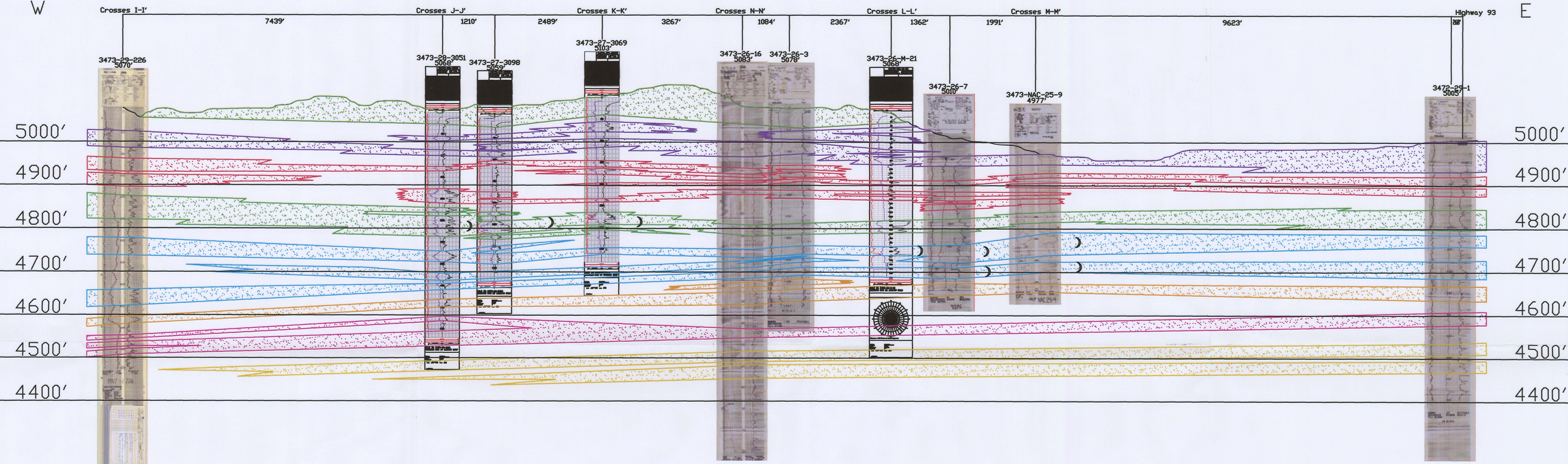
3473-26 3473-25

3473-25 3472-30

3472-30 3472-29

E'

E



LEGEND

110 SAND	
100 SAND	
90 SAND	
80 SAND	
70 SAND	
60 SAND	
50 SAND	
40 SAND	
ROLL FRONT	

NTS

NOT TO SCALE

LOOKING NORTH

uraniumone™
investing in our energy

907 North Poplar St., Suite 260, Casper, WY 82601 307-234-8235

**LUDEMAN PROJECT
CROSS SECTION E-E'**

T.34N., R.73W., Sec. 29,28,27,26,25
T.34N., R.72W., Sec. 30,29
CONVERSE COUNTY, WYOMING

Date:	02/09/2009	By:	TC	Checked:	
Rev. No.		Description	Date	By	FIGURE:
1			07/28/2009	TC	2.6-7

02B-1205