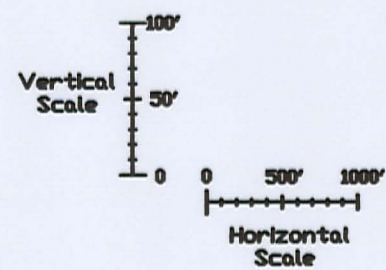
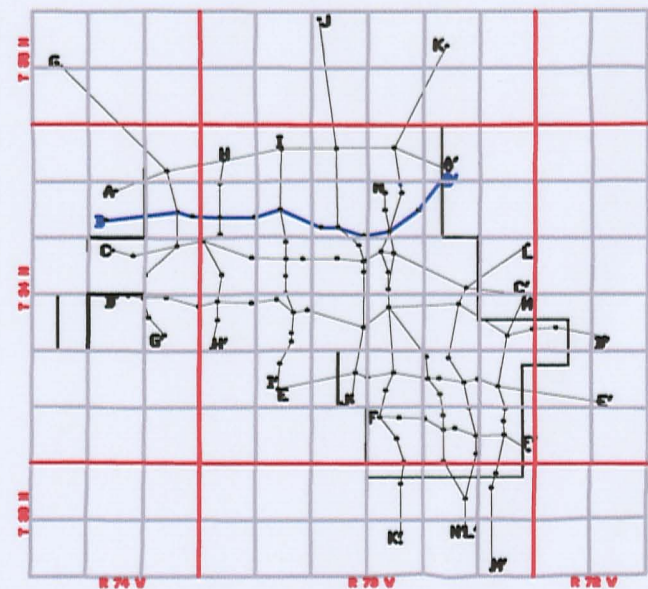
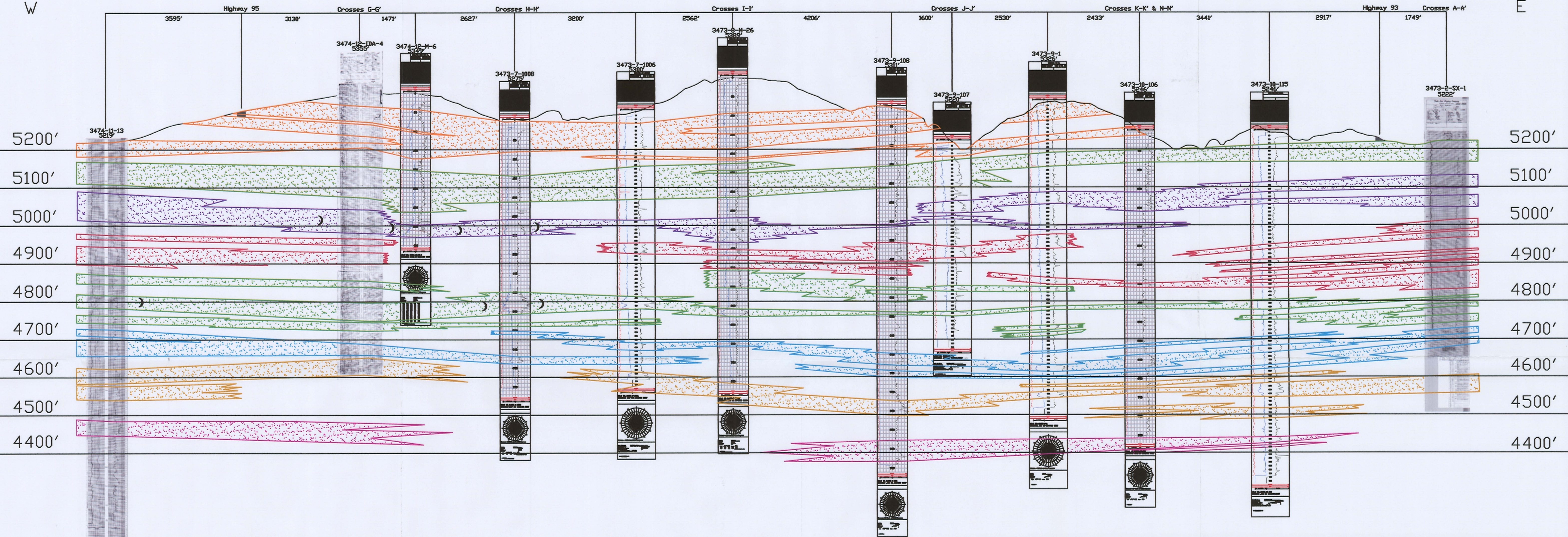


B

W

B'

E



LEGEND

- 120 SAND
- 110 SAND
- 100 SAND
- 90 SAND
- 80 SAND
- 70 SAND
- 60 SAND
- 50 SAND

ROLL FRONT
NTS

)
NOT TO SCALE

LOOKING NORTH



907 North Poplar St., Suite 260 ,Casper, WY 82601 307-234-8235

LUDEMAN PROJECT CROSS SECTION B-B'

T.34N., R.74W., Sec.11,12
T.34N., R.73W., Sec.7,8,9,10,11,2
CONVERSE COUNTY, WYOMING

Date: 02/09/2009 By: TC Checked:

Rev. No.	Description	Date	By
1		07/28/2009	TC

FIGURE:
2.6-4

02B-202