



Photo 54 – WL-19a & b. Emergent wetlands upgradient of diked water body in Sage Creek Tributary 4 NW. WL-19a is in foreground. Looking east.



Photo 55-WL-20. Isolated emergent wetland adjacent to windmill in Sage Creek Tributary 4 NW drainage. Looking east.



Photo 56 – WL-21a. Emergent wetland in Sage Creek Tributary 4 NW. Looking northeast.

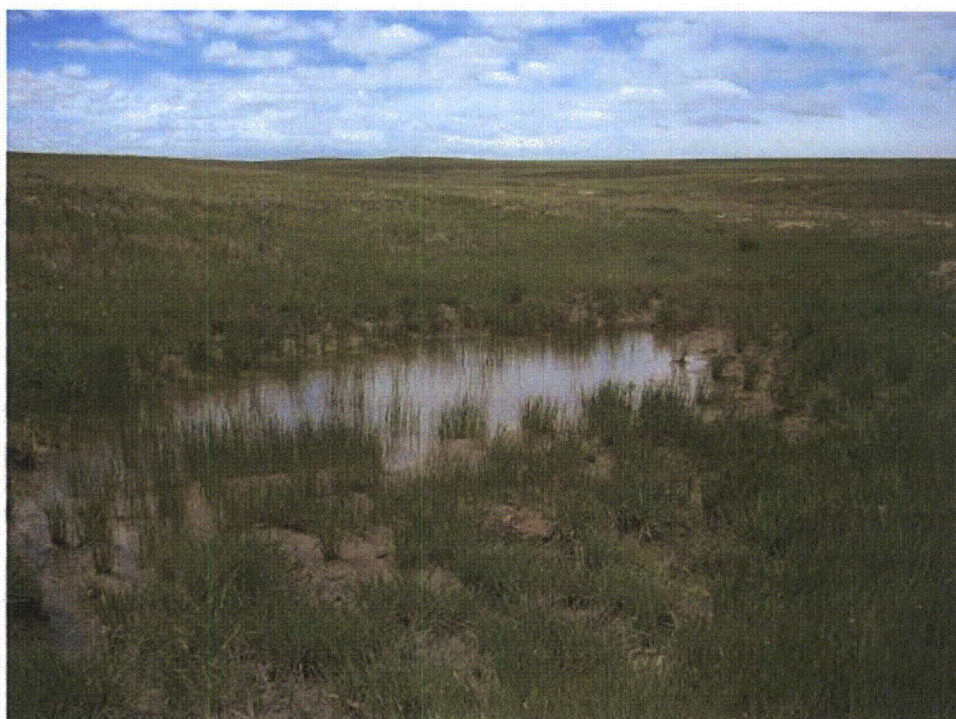


Photo 57 - WL-21d. Emergent wetland in Sage Creek Tributary 4 NW. Looking north.



Photo 58 - WL-21e. Emergent wetland in Sage Creek Tributary 4 NW. Looking west.



**Photo 59 – WL-22. Emergent wetland behind diked channel in Sage Creek
Tributary 4 NW. Looking southeast.**



**Photo 60 - WL-26f. Emergent wetland behind diked channel in Sage Creek
Tributary 4. Looking east.**



**Photo 61 - WL-26g. Emergent wetland behind diked channel in Sage Creek
Tributary 4. Looking east.**



Photo 62 - WL-27a. Emergent wetland in Sage Creek Tributary 4 S. Looking northeast.



Photo 63 – WL-29h. Emergent wetland in Sage Creek Tributary 4 S. Looking east.



Photo 64 – WL-29n. Emergent wetland in Sage Creek Tributary 4 S. Looking northwest.

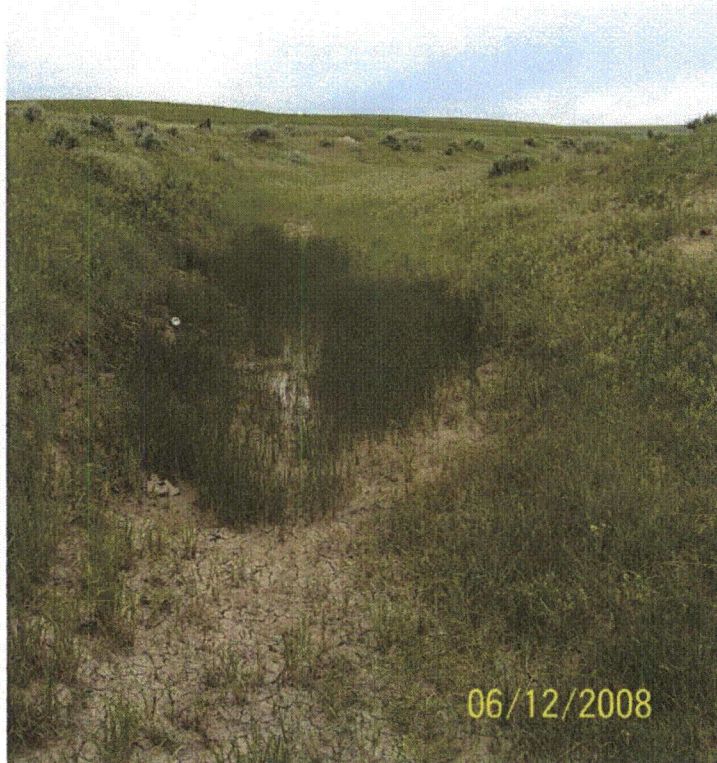


Photo 65 – WL-29u. Emergent wetland in Sage Creek Tributary 4 S. Looking east.



Photo 66 – WL-29dd. Emergent wetland in Sage Creek Tributary 4 S. Looking northwest.



Photo 67 – WL-31o. Emergent wetland in Sage Creek Tributary 4. Looking northeast.



Photo 68 – WL-32a. Emergent wetland in Sage Creek Tributary 4. Looking northeast.



Photo 69 – WL-33a. Emergent wetland in Sage Creek Tributary 4. Looking southeast.



Photo 70 – WL-34c. Emergent wetland in Sage Creek Tributary 4. Looking north.



Photo 71 – WL-37a. Emergent wetland in Sage Creek. Looking southeast.



Photo 72 – WL-37c. Emergent wetland in Sage Creek. Looking north.



Photo 73 – WL-37n. Emergent wetland in Sage Creek. Looking southeast.



Photo 74 – WL-37s. Emergent wetland in Sage Creek. Looking southeast.



Photo 75 – WL-37w. Emergent wetland in drainage to Sage Creek. Looking west.



Photo 76 – WL-38. Emergent slope wetland in Sage Creek. Looking northeast.



Photo 77 – WL-39. Emergent slope wetland in Sage Creek. Looking north.



Photo 78 – WL-40. Emergent slope wetland in Sage Creek. Looking south.



Photo 79 – WL-41c. Emergent wetland in Sage Creek Tributary 7. Looking south.



Photo 80 – WL-41f. Emergent wetland in diked Sage Creek Tributary 7 (Gilbert Lake). Looking northeast.



**Photo 81 – WL-42. Isolated depression. Emergent wetland in Sage Creek
Tributary 7 drainage area. Looking east.**



Photo 82 – WL-43a. Emergent wetland in Sage Creek Tributary 6. Looking southwest.



Photo 83 – WB-67. Diked waterbody in Sage Creek Tributary 3. Looking west.



Photo 84 – WB-73. Waterbody in depression in Sage Creek Tributary 3. Looking west.



Photo 85 – WB-78. Waterbody in depression in Sage Creek Tributary 3. Looking west.



Photo 86 - WB-79. Diked waterbody in Sage Creek Tributary 3. Looking northeast.



**Photo 87 – WB-80. Isolated waterbody in depression in Sage Creek Tributary 4 N.
Looking northeast.**



**Photo 88 – WB-82. Isolated waterbody in depression in Sage Creek Tributary 4.
Looking northeast.**



**Photo 89 – WB-85. Diked waterbody in depression in Sage Creek Tributary 4.
Looking south.**



Photo 90 – WB-90. Waterbody in depression in Sage Creek Tributary 4. Looking south.



Photo 91 – WB-95. Isolated waterbody at windmill in Sage Creek Tributary 4 NW drainage area. Looking west.



Photo 92 - WB-98. Diked waterbody in Sage Creek Tributary 4W. Looking southeast.



Photo 93 - WB-102. Diked waterbody in Sage Creek Tributary 4W. Looking east.



Photo 94 - WB-103. Isolated waterbody in depression in Sage Creek Tributary 4 W drainage area. Looking northeast.



Photo 95 - WB-114. Waterbody in depression in Sage Creek Tributary 4. Looking northwest.



Photo 96- WB-126. Waterbody in depression in Sage Creek Tributary 4. Looking west.



Photo 97 - WB-130. Waterbody in depression in Sage Creek Tributary 4. Looking northwest.



Photo 98 – WB-134. Isolated waterbody piped from windmill in Sage Creek drainage area. Looking northeast.



Photo 99 - WB-141. Waterbody in depression in Sage Creek Tributary 6. Looking southwest.



**Photo 100 - WB-151. Waterbody in depression in Sage Creek Tributary 6.
Looking southwest.**



**Photo 101 - WB-162. Waterbody in depression in Sage Creek Tributary 6.
Looking west.**



**Photo 102 - WB-172. Waterbody in depression in Sage Creek Tributary 6.
Looking south.**



**Photo 103 - WB-182. Waterbody in depression in Sage Creek Tributary 6.
Looking northwest.**



**Photo 104 - WB-191. Waterbody in depression in tributary to Sage Creek.
Looking northeast.**



**Photo 105 - WB-193. Waterbody in depression in Sage Creek Tributary 7.
Looking south.**



**Photo 106 - WB-195. Waterbody in depression in Sage Creek Tributary 7.
Looking north.**