

**Maier, Bill**

**From:** Maier, Bill *REC IV*  
**Sent:** Tuesday, June 07, 2011 11:45 PM  
**To:** Elkmann, Paul; Howell, Linda; Guerra, Gilbert; Andrews, Tom; Alferink, Beth; Clark, Jeff; Azua, Ray  
**Subject:** FW: Flood Update Newsletter - June 6  
**Attachments:** flood update June 6, 2011.pdf  
**Importance:** High

Not sure if you are receiving the attached or not.

FYI, the discussion below refers to the offsites' desire for FCS to stop issuing hourly updates while in the NOUE. Not sure whether the states are asking for relief because they are already very busy with the flood response or if they are concerned that they may become de-sensitized if the NOUE declaration lasts for a protracted period.

Bill

**From:** Schwarz, Jon [<mailto:jon.schwarz@nebraska.gov>]  
**Sent:** Tuesday, June 07, 2011 8:49 AM  
**To:** Berndt, Al; Imler, Earl; Newsham, Cindy; Moon Guy; Hollingsead, Greg; Curtis, Brent; Scriven, April; Pook Bill ; Kelsay, James G.; Montgomery, David N.  
**Cc:** Maier, Bill  
**Subject:** FW: Flood Update Newsletter - June 6  
**Importance:** High

Ladies and Gentlemen,

I received a call from Mark Reller at the Fort Calhoun Nuclear Station at 0819 this AM and he reported that they will not be able to make a change to the hourly updates by this afternoon as they had thought, i.e. to stop the hourly notifications and only make the notifications at shift changes 12-hr or 8-hr or when there is a change in status which the state and locals had already concurred with. The change in paperwork requires a review by the "Plant Review Committee (PRC)" and he has no idea when they are going to meet again.

My intention with Al Berndt's permission is to email Steve Reller and inform him that the State of Nebraska requests that the PRC go into an emergency session for a review and approval of this change.

At this point there though, it is unknown when or if the change can take place because if the PRC feels it may be a reduction in the safety of the public then it will have to be sent to the NRC for review and approval.

Jon

**From:** RELLER, MARK H [<mailto:mreller@oppd.com>]  
**Sent:** Tuesday, June 07, 2011 7:51 AM

Information in this record was deleted  
in accordance with the Freedom of Information  
Act, exemptions

~~FOIA~~

*211-2339*

*9/13*

**To:** Stodola, Kathy [HSEMD]; Schwarz, Jon; Cook, Bryan; Bill Pook; (b)(6) pott.ema@pottcounty.com  
**Cc:** 'Ryan, Laurel'  
**Subject:** FW: Flood Update Newsletter - June 6

**From:** Corporate Communications  
**Sent:** Monday, June 06, 2011 3:13 PM  
**To:** All Divisions  
**Subject:** Flood Update Newsletter - June 6

As part of the coordinated effort across OPPD to manage the flooding situation, having a regular method of communications is key. Corporate Communications has prepared a daily **OPPD Flood Update** for employees that will be distributed early afternoon each day to give our employees the latest information from across the Company. This important information will be sent from the Corporate Communications mailbox so be sure and look for it in your email in-box.

Attached is the latest update with a valuable recap of all the great work that took place this weekend. We have also written in-depth ON articles with photos and video so employees have access to what is going on across the Company. In addition, be sure and visit the dedicated Flood Update button on the intranet to get all the current and past information. Please share this information with the employees in your area who do not have access to e-mail.

To help keep our customers informed, we are also providing valuable information on the company's website [www.oppd.com](http://www.oppd.com).

We thank everyone for all the great work they are doing. If you have any story ideas or feedback in general, we have established a dedicated internal feedback link at [floodnewsfeedback@oppd.com](mailto:floodnewsfeedback@oppd.com)

Thanks for ALL you do!

Your Corporate Communications Team



**Lisa Olson**  
Division Manager  
Corporate Communications  
Omaha Public Power District  
444 South 16th Street Mall 3E/EP1, Omaha NE 68102  
402-636-3744  
[lolson@oppd.com](mailto:lolson@oppd.com)

This e-mail contains Omaha Public Power District's confidential and proprietary information and is for use only by the intended recipient. Unless explicitly stated otherwise, this e-mail is not a contract offer, amendment, nor acceptance. If you are not the intended recipient you are notified that disclosing, copying, distributing or taking any action in reliance on the contents of this information is strictly prohibited.

# Flood Update

June 6, 2011

The latest impact on OPPD operations



## Message from Gary Gates

I've said it before and I'll say it again. The employees of this utility are incredible. That's the first word that comes to mind as I think about your response to the flooding situation that is affecting our business.

As with every storm we battle, each and every one of you steps up to the plate and digs in. The way you react, work around-the-clock and become fully committed to the task at hand is amazing. I am unbelievably proud of every one of you and offer my most sincere thanks for all you are doing.

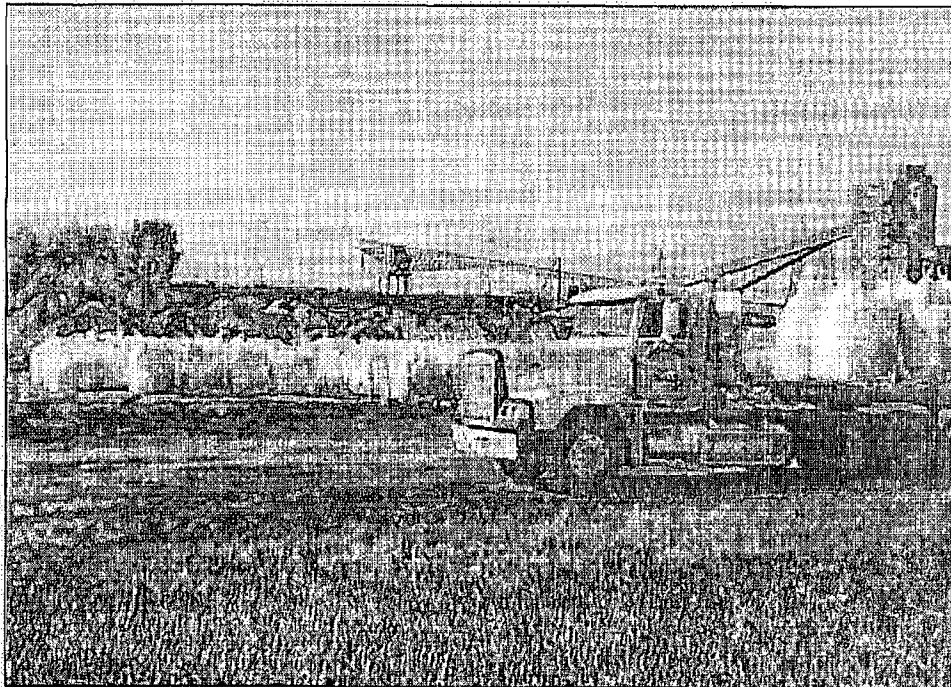
I know many of you worked all weekend – most probably didn't have any weekend at all. The entire senior team appreciates the effort. Your hard work does not go unnoticed by all of us within OPPD and by our customers and community partners. It's because of all of you that we have the great reputation that we have in the communities we serve. I am always proud to call myself an OPPD employee as I work beside the best of the best.

I do ask, however, that as you go about this response, you keep safety as your main focus. I can live with damaged equipment, but I would never get past injury to one of our own. Corporate Communications, working with the Safety & Technical Training Department, has been distributing safety guidelines and information all weekend and will continue to do so in this publication. Please heed the information. I don't want anyone hurt and my expectation is that we send you home every night in the same condition you came to work.

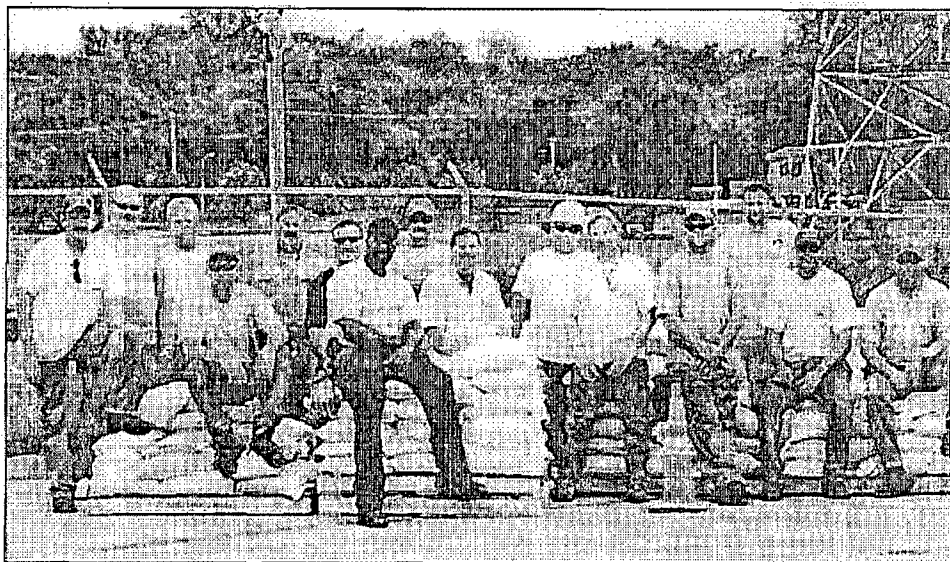
We may be responding to this situation for several more weeks. As we go forward, please be safe and take good care of yourself.

Again, my heartfelt thanks for all you do.

Gary Gates



Large sandbags are being used at Nebraska City Station.



Above is a crew that helped sandbag the North Omaha Station access road on June 4.

Talking points and updates continued on back.

# Flood Update

June 6, 2011 • page 2

## Updated Internal Talking Points June 6, 2011

- OPPD declared a Notification of Unusual Event (NOUE) at Fort Calhoun Station as of 8 a.m. this morning, June 6. This is the least-serious of four emergency classifications that are standard in the U.S. nuclear industry.
- OPPD declared a NOUE because the U.S. Army Corps of Engineers projects the Missouri River level will reach 1,004 feet above mean sea level later this week, and is expected to remain at or above that level for more than a month.
- FCS will remain in this emergency classification until it is expected that the water will drop and remain below the 1,004-foot level.
- No release of radioactive material requiring offsite response or monitoring is expected unless further degradation occurs. OPPD has notified emergency management agencies in Nebraska and Iowa of the declaration.
- Beginning Wednesday, OPPD has partnered with Alegent Health and will be providing TDAP injections (tetanus, diphtheria, pertussis) to those employees working in the floodwaters and to those who will be. Please abide by these guidelines as we want to ensure the employees most at risk receive the injections. If you have any questions as to whether you should receive the injection, please ask your immediate supervisor. The schedule for injections is as follows: Fort Calhoun Station and Nebraska City – Wed., June 8, from 6 a.m. to 2 p.m., Thurs., June 9, from 8 a.m. to 4 p.m.
- The disconnect policy for customers with homes being affected remain in force. The policy is detailed here:
- To ensure public safety, if a customer living along the river requests that we disconnect their power due to the flooding, and our crews are able to get to the residence and they are the only residence impacted, we will disconnect the power. In these situations we will be setting the expectation that the customer will need

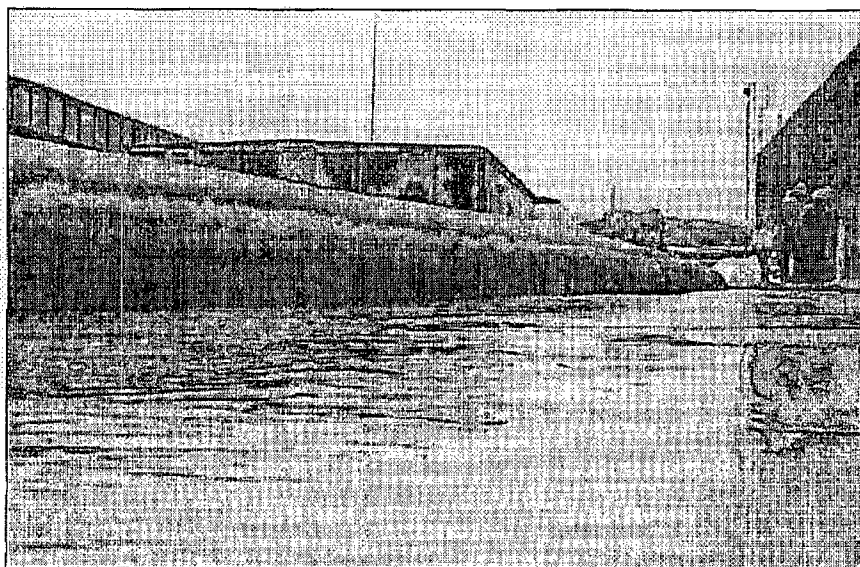
to get a permit/inspection to get the power reconnected. We will communicate to these customers that if there is a concern prior to our crew arriving, they can shut off their main breaker.

- **Under no circumstances should anyone attempt to turn off power at the main electrical panel box if they must stand in water or on a wet floor to do so.**
- Reconnections will only occur when an approval is received from the proper authorities who reside over the area.
- We will also disconnect power if a city official or other government entity requests that we do so or if they officially evacuate an area.
- To ensure effective communication, OPPD has installed cellular towers at Fort Calhoun Station to aid cell phone reception. Similar plans are under way for Nebraska City Station. These are being coordinated by the Business Continuity Team.
- All employees should ensure they code their time appropriately on their time sheets with regard to the flooding situation. This is important so OPPD can accurately track the financial impact of this situation to the company. If you questions, please contact your supervisor.

## Latest Updates

### Fort Calhoun Station

- OPPD declared a Notification of Unusual Event (NOUE) at FCS as of 8 a.m. today, June 6. This is the least-serious of four emergency classifications.
- OPPD declared a NOUE because the U.S. Army Corps of Engineers projects the Missouri River level will reach 1,004 feet above mean sea level later this week, and is expected to remain at or above that level for more than a month.
- FCS will remain in this emergency classification until it is expected that the water will drop and remain below the 1,004-foot level.
- With the rising floodwaters, Aqua-Dams® and other protective berms being installed, all employees need to be especially alert to their new surroundings and remain focused on safety.
- The schedule for tetanus injections for Fort Calhoun Station is Wed., June 8, from 6 a.m. to 2 p.m., Thurs., June 9, from 8 a.m. to 4 p.m.
- Blair High School started to serve as temporary parking today, with shuttle buses running to and from the site. Those



With the rising floodwaters, Aqua Dams® and other protective berms are being installed at Fort Calhoun Station.

buses will start running at 5 a.m. effective tomorrow, June 7.

- Plans are under way to relocate employees to other work locations as needed.

## North Omaha Station

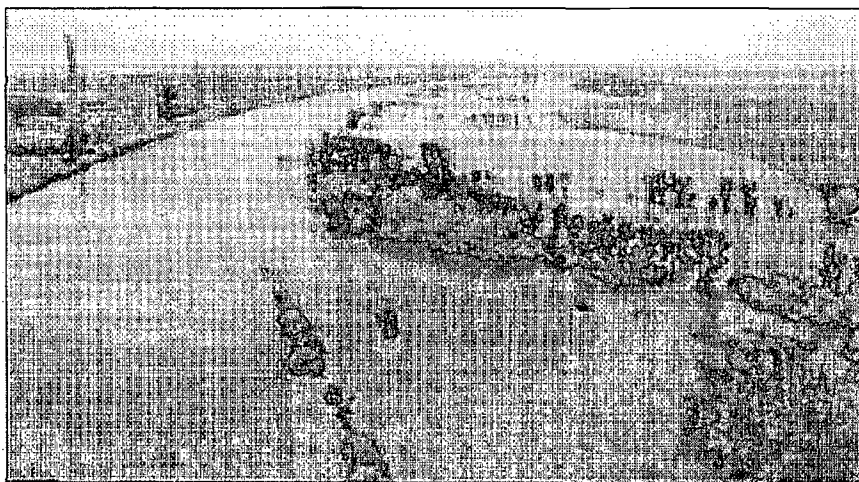
- OPPD is anticipating that the river level will crest at 988.6 feet around June 17. A barrier has been built to protect the access road.

## Nebraska City Station

- Sandbagging efforts continue at Nebraska City. Over the weekend, nearly 20,000 bags were filled at NCS. Its focus is to ensure the rail tracks are protected from floodwater. Personnel there will begin raising the track nearly three feet and installing a water dam along the rail.
- The Corps of Engineers and HDR engineers inspected Nebraska City's existing levee. It was found to be in mostly good condition and only a few repairs are needed.
- The river level is at 921.1 – the record level for Nebraska City is 925.25
- The predicted crest at this time is expected on June 18 and will reach a 924.0 level. The entire plant levee elevation is 926.5
- Rail service is still intact. The effort to raise the level of the track coming into the plant is only waiting on the arrival of ballast which should arrive in the next 24 hours. Kiewit is beginning to place 3,000-pound sandbags to create a barrier on the east side of the tracks for a secondary means to keep the tracks from flooding.
- The schedule for tetanus injections for Nebraska City Station is Wed., June 8, from 6 a.m. to 2 p.m., Thurs., June 9, from 8 a.m. to 4 p.m.

## Transmission & Distribution

- T&D is working to sandbag around the three control buildings and other critical equipment in the substation at Nebraska City Station. Cable ducts into the buildings will also be plugged and pumps installed. This would be a back-up should the levee fail in that area.



Aerial inspections are being completed to monitor OPPD equipment.

- OPPD is looking at the possibility of moving debris that river current has pushed against some transmission structures south of Nebraska City Station.

## Washington County

- OPPD attended a community meeting in Herman on Friday evening to discuss the flooding issue and to answer concerns voiced by area residents. Approximately 150 people attended the two-hour meeting that also included local emergency response agencies, state and local government officials and a representative from the Corps of Engineers.
- A few hours earlier, OPPD participated in another meeting with Washington County officials held in Blair, Nebraska, to discuss cooperative efforts to prepare for potential flooding and to avoid electricity problems in those areas that could be the most severely impacted by the rising river levels or the evacuation of area residents.

## Media

- Corporate Communications made available to media new video of Aqua Dam® filling at Fort Calhoun Station.
- Media continues to follow information on when various areas will be disconnected.
- A safety message regarding overhead power line contacts was distributed to media.

- A news release on the Notification of Unusual Event was issued on Monday.
- OPPD has activated and repurposed its storm blog as a flood and outage information blog. The blog is scheduled to be updated daily. Here's the address: [www.oppdstorminfo.blogspot.com](http://www.oppdstorminfo.blogspot.com)

## Corps of Engineers

- The Corps of Engineers increased the releases from Gavins Point Dam to 115,000 cubic feet per second (cfs) earlier today and will increase to 120,000 cfs later today, June 6.
- The projections for the rivers show a steady increase of river stage levels. The Missouri River stage at Blair is expected to increase by 1.35 feet between today and June 10 in the evening. At Omaha, the river stage is to increase by 2.23 feet between today and June 10 in the evening. At Nebraska City Station, the river stage is to increase by 1.4 feet between today and June 10 in the evening.

To provide feedback on  
Corporate Communications/  
Floodnews coverage, email  
[floodnewsfeedback@oppd.com](mailto:floodnewsfeedback@oppd.com)

## Focus on Safety

### Flood-Response Must Include Safe Work Practices

As flood emergency planning efforts continue, all employees must remain focused and stay alert to the potential hazards around them, especially those who are helping with work they don't normally do. Performing new tasks in unfamiliar surroundings requires extra vigilance on the safety front.

**Stay alert to your surroundings, especially around heavy equipment.**

Stay focused, keep your guard up and protect yourself at all times, especially when working around heavy equipment, such as scrapers, loaders, skid-loaders, forklifts, tractors, semi-trucks, etc.

**Only qualified personnel should operate these vehicles and equipment.**

**Wear personal protective equipment (PPE).**

All employees must wear hard hats, safety glasses and other PPE as required. Only those employees helping to fill and place sandbags at power plants are exempt from wearing a hard hat. Safety leads at each plant are providing direction on such items.

**Wear proper work attire.**

Employees such as those helping sandbag at FCS and NCS must wear a shirt with at least short sleeves, long pants and sturdy work shoes. No shorts, tank tops or athletic shoes, etc.

**Take steps to avoid heat-related illnesses.**

- Drink plenty of water. Avoid caffeine, which dehydrates the body.
- Eat small meals and eat more often. Avoid foods that are high in protein, which increases metabolic heat.
- Take regular breaks, in the shade, if possible.
- If you recognize that you or someone else is showing signs of a heat-related illness (see below), stop all activity and get help, as needed.

**Recognizing heat stroke.**

Also known as sunstroke, heat stroke is life-threatening. The victim's temperature-control system, which produces sweating to cool the body, stops working.

The body temperature can rise so high that brain damage and death may result if the body is not cooled quickly.

**Symptoms of heat stroke:**

- Hot, red and dry skin
- Changes in consciousness
- Rapid, weak pulse
- Rapid, shallow breathing
- Body temperature can be very high, as high as 105 degrees

**Symptoms of heat exhaustion:**

- Cool, moist, pale, flushed or red skin
- Heavy sweating
- Headache
- Nausea or vomiting
- Dizziness
- Exhaustion
- Body temperature will be near normal

**If you have safety-related questions:**

Please contact Jerry McCaw, manager of Injury Prevention, or Kevin McCormick, division manager of Safety & Technical Training.

### Flood Safety Tips

**Stay away from downed power lines and electrical wires**

- Electrical current can travel through water. Report downed power lines at 800-554-6773.

**What to do prior to the flood for electrical safety**

- Make sure your electric circuit breakers or fuses are clearly marked for each area of the house.
- Turn off electricity at the main breaker box, or fuse box.
- Unplug all appliances.

**Electrical safety during a flood emergency**

- Never enter a flooded basement or other flooded area where water may be in contact with electrical wiring, appliances and other devices.
- Under no circumstances should you attempt to turn off power at the main electrical panel box if you must stand in water or even on a wet floor to do so.
- Furthermore, never operate electrical appliances or devices or touch electrical switches, outlets or cords if you are standing in water or are on a wet surface, or if you are wet.
- Keep all electric-powered tools and equipment at least 10 feet away from water and wet surfaces. Do not use electric tools and equipment outdoors if the ground is wet.

**What to do when flood waters subside**

- After flood waters subside, if your property has been disconnected from the grid for safety's sake, your electrical system will need an inspection to make certain it is safe to handle electricity again. The inspector will provide a permit, notifying OPPD that it is safe to reconnect you.