



Photo 40: WL-9a. Emergent wetland in depression within Sage Creek Tributary 1 drainage. Looking east.



Photo 41: WL-9b. Emergent wetland in depression within Sage Creek Tributary 1 drainage. Looking west.



Photo 42: WL-9d. Emergent wetland in depression within Sage Creek Tributary 1 drainage. Looking west.



Photo 43: WL-9e. Emergent wetland in depression within Sage Creek Tributary 1 drainage. Looking west.



Photo 44: WL-10. Isolated emergent wetland within depression in Sage Creek Tributary 3 drainage area. Looking southeast.



Photo 45: WL-11a. Emergent wetland within depression in Sage Creek Tributary 3 drainage. Looking west.



Photo 46: WL-12. Emergent wetland within depression in Sage Creek Tributary 2 drainage. Looking west.



Photo 47: WL-13. Isolated emergent wetland within depression in Sage Creek Tributary 2 drainage area. Looking north.



Photo 48: WL-14. Emergent wetland (PEMC with PUBF area) within depression in Sage Creek. Looking southeast.



Photo 49: WL-16. Isolated emergent wetland within depression in Sage Creek Tributary 4 drainage. Looking northeast.



Photo 50: WL-17. Emergent wetland within depression in Sage Creek Tributary 4 drainage. Looking south.



Photo 51: WL-18c. Emergent wetland within depression in Sage Creek Tributary 4 drainage. Looking north.



Photo 52: WL-18l. Emergent wetland within depression in Sage Creek Tributary 4 drainage. Looking west.



Photo 53: WL-18n. Emergent wetland within depression in Sage Creek Tributary 4 drainage. Looking north.



Photo 54: WL-19a & b. Emergent wetlands upgradient of diked water body in Sage Creek Tributary 4 NW. WL-19a is in foreground. Looking east.



Photo 55-WL-20. Isolated emergent wetland adjacent to windmill in Sage Creek Tributary 4 NW drainage. Looking east.



Photo 56: WL-21a. Emergent wetland in Sage Creek Tributary 4 NW. Looking northeast.



Photo 57: WL-21d. Emergent wetland in Sage Creek Tributary 4 NW. Looking north.



Photo 58: WL-21e. Emergent wetland in Sage Creek Tributary 4 NW. Looking west.



Photo 59: WL-22. Emergent wetland behind diked channel in Sage Creek Tributary 4 NW. Looking southeast.



Photo 60: WL-26f. Emergent wetland behind diked channel in Sage Creek Tributary 4. Looking east.



Photo 61: WL-26g. Emergent wetland behind diked channel in Sage Creek Tributary 4. Looking east.



Photo 62: WL-27a. Emergent wetland in Sage Creek Tributary 4 S. Looking northeast.



Photo 63: WL-29h. Emergent wetland in Sage Creek Tributary 4 S. Looking east.



Photo 64: WL-29n. Emergent wetland in Sage Creek Tributary 4 S. Looking northwest.

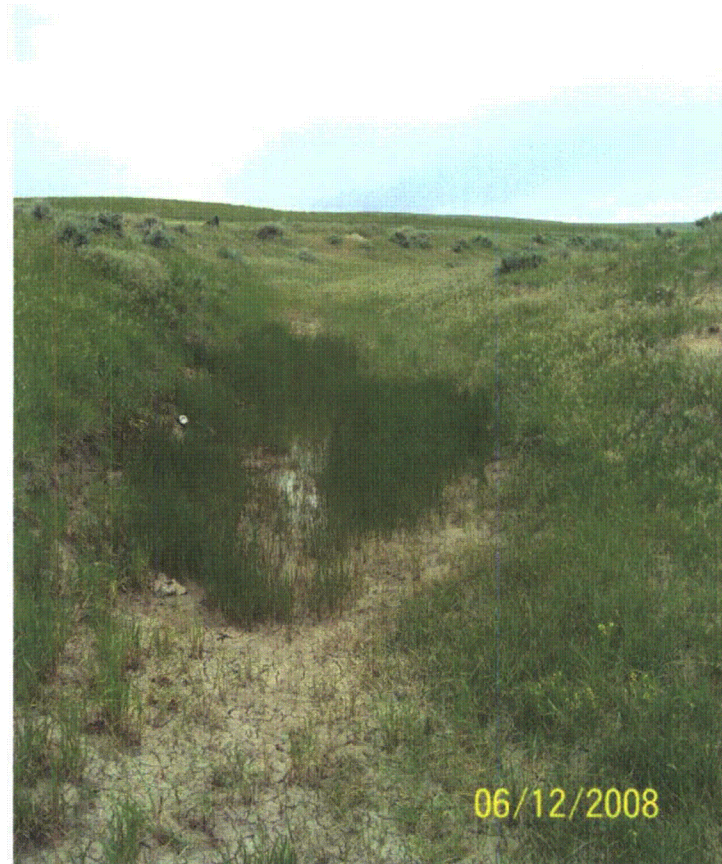


Photo 65: WL-29u. Emergent wetland in Sage Creek Tributary 4 S. Looking east.



Photo 66: WL-29dd. Emergent wetland in Sage Creek Tributary 4 S. Looking northwest.



Photo 67: WL-31o. Emergent wetland in Sage Creek Tributary 4. Looking northeast.



Photo 68: WL-32a. Emergent wetland in Sage Creek Tributary 4. Looking northeast.



Photo 69: WL-33a. Emergent wetland in Sage Creek Tributary 4. Looking southeast.



Photo 70: WL-34c. Emergent wetland in Sage Creek Tributary 4. Looking north.



Photo 71: WL-37a. Emergent wetland in Sage Creek. Looking southeast.



Photo 72: WL-37c. Emergent wetland in Sage Creek. Looking north.



Photo 73: WL-37n. Emergent wetland in Sage Creek. Looking southeast.



Photo 74: WL-37s. Emergent wetland in Sage Creek. Looking southeast.



Photo 75: WL-37w. Emergent wetland in drainage to Sage Creek. Looking west.



Photo 76: WL-38. Emergent slope wetland in Sage Creek. Looking northeast.



Photo 77: WL-39. Emergent slope wetland in Sage Creek. Looking north.



Photo 78: WL-40. Emergent slope wetland in Sage Creek. Looking south.



Photo 79: WL-41c. Emergent wetland in Sage Creek Tributary 7. Looking south.



Photo 80: WL-41f. Emergent wetland in diked Sage Creek Tributary 7 (Gilbert Lake). Looking northeast.



Photo 81: WL-42. Isolated depression. Emergent wetland in Sage Creek Tributary 7 drainage area. Looking east.



Photo 82: WL-43a. Emergent wetland in Sage Creek Tributary 6. Looking southwest.



Photo 83: WB-67. Diked waterbody in Sage Creek Tributary 3. Looking west.



Photo 84: WB-73. Waterbody in depression in Sage Creek Tributary 3. Looking west.



Photo 85: WB-78. Waterbody in depression in Sage Creek Tributary 3. Looking west.



Photo 86: WB-79. Diked waterbody in Sage Creek Tributary 3. Looking northeast.



**Photo 87: WB-80. Isolated waterbody in depression in Sage Creek Tributary 4 N.
Looking northeast.**



**Photo 88: WB-82. Isolated waterbody in depression in Sage Creek Tributary 4.
Looking northeast.**



**Photo 89: WB-85. Diked waterbody in depression in Sage Creek Tributary 4.
Looking south.**



Photo 90: WB-90. Waterbody in depression in Sage Creek Tributary 4. Looking south.



Photo 91: WB-95. Isolated waterbody at windmill in Sage Creek Tributary 4 NW drainage area. Looking west.



Photo 92: WB-98. Diked waterbody in Sage Creek Tributary 4W. Looking southeast.



Photo 93: WB-102. Diked waterbody in Sage Creek Tributary 4W. Looking east.



Photo 94: WB-103. Isolated waterbody in depression in Sage Creek Tributary 4 W drainage area. Looking northeast.



Photo 95: WB-114. Waterbody in depression in Sage Creek Tributary 4. Looking northwest.



Photo 96- WB-126. Waterbody in depression in Sage Creek Tributary 4. Looking west.



Photo 97: WB-130. Waterbody in depression in Sage Creek Tributary 4. Looking northwest.



Photo 98: WB-134. Isolated waterbody piped from windmill in Sage Creek drainage area. Looking northeast.



Photo 99: WB-141. Waterbody in depression in Sage Creek Tributary 6. Looking southwest.



Photo 100: WB-151. Waterbody in depression in Sage Creek Tributary 6. Looking southwest.



Photo 101: WB-162. Waterbody in depression in Sage Creek Tributary 6. Looking west.



Photo 102: WB-172. Waterbody in depression in Sage Creek Tributary 6. Looking south.



Photo 103: WB-182. Waterbody in depression in Sage Creek Tributary 6. Looking northwest.



Photo 104: WB-191. Waterbody in depression in tributary to Sage Creek. Looking northeast.



Photo 105: WB-193. Waterbody in depression in Sage Creek Tributary 7. Looking south.



Photo 106: WB-195. Waterbody in depression in Sage Creek Tributary 7. Looking north.