

**ADDENDUM 2.8-G**  
**WETLAND SUMMARY**

LUDEMAN PROJECT WETLAND SUMMARY								
WETLAND	Township Range Section	AREA (Sq Ft)	AREA (Acres)	Drainage	Wetland <sup>1</sup> Classification	Geomorphic Setting	Comments	Jurisdictional <sup>2</sup> Recommendation
WL-1a	T34NR74 W14	2,371	0.054	Little Sand Creek 1, Trib 3, Trib 4	PEMA	Depression	Little Sand Creek	jurisdictional
WL-1b	T34NR74 W14	1,422	0.033	Little Sand Creek 1, Trib 3, Trib 4	PEMA	Depression	Little Sand Creek	jurisdictional
WL-1c	T34NR74 W14	1,220	0.028	Little Sand Creek 1, Trib 3, Trib 4	PEMA	Depression	Little Sand Creek	jurisdictional
WL-1d	T34NR74 W14	754	0.017	Little Sand Creek 1, Trib 3, Trib 4	PEMA	Depression	Little Sand Creek	jurisdictional
WL-1e	T34NR74 W14	1,159	0.027	Little Sand Creek 1, Trib 3, Trib 4	PEMA	Depression	Little Sand Creek	jurisdictional
WL-1f	T34NR74 W14	111	0.003	Little Sand Creek 1, Trib 3, Trib 4	PEMA	Depression	Little Sand Creek	jurisdictional
WL-1g	T34NR74 W14	323	0.007	Little Sand Creek 1, Trib 3, Trib 4	PEMA	Depression	Little Sand Creek	jurisdictional
WL-1h	T34NR74 W14	329	0.008	Little Sand Creek 1, Trib 3, Trib 4	PEMA	Depression	Little Sand Creek	jurisdictional
WL-1i	T34NR74 W14	556	0.013	Little Sand Creek 1, Trib 3, Trib 4	PEMA	Depression	Little Sand Creek	jurisdictional
WL-1j	T34NR74 W14	784	0.018	Little Sand Creek 1, Trib 3, Trib 4	PEMA	Depression	Little Sand Creek	jurisdictional
WL-1k	T34NR74 W14	2,431	0.056	Little Sand Creek 1, Trib 3, Trib 4	PEMA	Depression	Little Sand Creek	jurisdictional
WL-1l	T34NR74 W14	266	0.006	Little Sand Creek 1, Trib 3, Trib 4	PEMA	Depression	Little Sand Creek	jurisdictional

LUDEMAN PROJECT WETLAND SUMMARY								
WETLAND	Township Range Section	AREA (Sq Ft)	AREA (Acres)	Drainage	Wetland <sup>1</sup> Classification	Geomorphic Setting	Comments	Jurisdictional <sup>2</sup> Recommendation
WL-1m	T34NR74 W14	15,451	0.355	Little Sand Creek 1, Trib 3, Trib 4	PEMA	Depression	Little Sand Creek	jurisdictional
WL-1n	T34NR74 W14	562	0.013	Little Sand Creek 1, Trib 3, Trib 4	PEMA	Depression	Little Sand Creek	jurisdictional
WL-1o	T34NR74 W14	31,491	0.723	Little Sand Creek 1, Trib 3, Trib 4	PEMA	Depression	Little Sand Creek	jurisdictional
WL-1p	T34NR74 W14	8,292	0.190	Little Sand Creek 1, Trib 3, Trib 4	PEMA	Depression	Little Sand Creek	jurisdictional
WL-1q	T34NR74 W14	5,166	0.119	Little Sand Creek 1, Trib 3, Trib 4	PEMA	Depression	Little Sand Creek	jurisdictional
WL-2	T34NR74 W14	241	0.006	Little Sand Creek 1, Trib 3, Trib 4	PEMA	Depression	in drainage	non-jurisdictional
WB-4	T34NR74 W14	1,857	0.043	Little Sand Creek 1, Trib 3, Trib 4	na	Depression	Little Sand Creek	jurisdictional
WB-5	T34NR74 W14	607	0.014	Little Sand Creek 1, Trib 3, Trib 4	na	Depression	Little Sand Creek	jurisdictional
WB-6	T34NR74 W14	4,882	0.112	Little Sand Creek 1, Trib 3, Trib 4	na	Depression	Little Sand Creek	jurisdictional
WB-7	T34NR74 W14	50,420	1.157	Little Sand Creek 1, Trib 3, Trib 4	na	Dike within drainage	stock pond in Little Sand Creek	jurisdictional
WB-8	T34NR74 W14	3,457	0.079	Little Sand Creek 1, Trib 3, Trib 4	na	Depression	Isolated - at well	non-jurisdictional

LUDEMAN PROJECT WETLAND SUMMARY								
WETLAND	Township Range Section	AREA (Sq Ft)	AREA (Acres)	Drainage	Wetland <sup>1</sup> Classification	Geomorphic Setting	Comments	Jurisdictional <sup>2</sup> Recommendation
WB-9	T34NR74 W14	4,210	0.097	Little Sand Creek 1, Trib 3, Trib 4	na	Depression	in drainage	non-jurisdictional
WB-10	T34NR74 W14	6,535	0.150	Little Sand Creek 1, Trib 3, Trib 4	na	Depression	in drainage	non-jurisdictional
WB-11	T34NR74 W14	126	0.003	Little Sand Creek 1, Trib 3, Trib 4	na	Depression	in drainage	non-jurisdictional
WB-12	T34NR74 W14	1,177	0.027	Little Sand Creek 1, Trib 3, Trib 4	na	Depression	in drainage	non-jurisdictional
WB-13	T34NR74 W13	5,315	0.122	Little Sand Creek 1, Trib 3, Trib 4	na	Diked drainage		non-jurisdictional
WB-14	T34NR74 W23	3,279	0.075	Little Sand Creek 1, Trib 3, Trib 4	na	Depression	in drainage	non-jurisdictional
WB-15	T34NR74 W23	256	0.006	Little Sand Creek 1, Trib 3, Trib 4	na	Depression	in drainage	non-jurisdictional
WB-16	T34NR74 W23	20,048	0.460	Little Sand Creek 1, Trib 3, Trib 4	na	Diked drainage		non-jurisdictional
WL-3a	T34NR74 W22	146,825	3.371	Little Sand Creek 2	PEMF/PUBF	Depression	Little Sand Creek	jurisdictional
WL-3b	T34NR74 W22	216,350	4.967	Little Sand Creek 2	PEMF/PUBF	Depression	Little Sand Creek	jurisdictional
WL-3c	T34NR74 W23	85,290	1.958	Little Sand Creek 2	PEMF/PUBF	Depression	Little Sand Creek	jurisdictional
WB-1	T34NR74 W12	5,879	0.135	Little Sand Creek Trib 1, Trib 2	na	Diked drainage		non-jurisdictional



LUDEMAN PROJECT WETLAND SUMMARY								
WETLAND	Township Range Section	AREA (Sq Ft)	AREA (Acres)	Drainage	Wetland <sup>1</sup> Classification	Geomorphic Setting	Comments	Jurisdictional <sup>2</sup> Recommendation
WB-2	T34NR74 W12	331	0.008	Little Sand Creek Trib 1, Trib 2	na	Depression	Isolated	non-jurisdictional
WB-3	T34NR74 W12	4,883	0.112	Little Sand Creek Trib 1, Trib 2	na	Diked drainage		non-jurisdictional
WB-17	T34NR73 W20	940	0.022	Running Dutchman Ditch Trib 1	na	Depression	Isolated - at windmill	non-jurisdictional
WB-18	T34NR73 W19	3,340	0.077	Running Dutchman Ditch Trib 1	na	Diked drainage		non-jurisdictional
WB-19	T34NR73 W19	32,692	0.751	Running Dutchman Ditch Trib 1	na	Diked drainage		non-jurisdictional
WB-20	T34NR73 W19	1,596	0.037	Running Dutchman Ditch Trib 1	na	Depression	in drainage	non-jurisdictional
WB-21	T34NR73 W20	17,030	0.391	Running Dutchman Ditch Trib 1	na	Diked drainage		non-jurisdictional
WB-22	T34NR73 W27	61	0.001	Running Dutchman Ditch Trib 2-1	na	Depression	in drainage	non-jurisdictional
WB-23	T34NR73 W27	206	0.005	Running Dutchman Ditch Trib 2-1	na	Depression	in drainage	non-jurisdictional
WB-24	T34NR73 W27	69	0.002	Running Dutchman Ditch Trib 2-1	na	Depression	in drainage	non-jurisdictional
WB-25	T34NR73 W27	286	0.007	Running Dutchman Ditch Trib 2-1	na	Depression	in drainage	non-jurisdictional
WB-26	T34NR73 W27	104	0.002	Running Dutchman Ditch Trib 2-1	na	Depression	in drainage	non-jurisdictional

LUDEMAN PROJECT WETLAND SUMMARY								
WETLAND	Township Range Section	AREA (Sq Ft)	AREA (Acres)	Drainage	Wetland <sup>1</sup> Classification	Geomorphic Setting	Comments	Jurisdictional <sup>2</sup> Recommendation
WB-27	T34NR73 W27	146	0.003	Running Dutchman Ditch Trib 2-1	na	Depression	in drainage	non-jurisdictional
WB-28	T34NR73 W27	348	0.008	Running Dutchman Ditch Trib 2-1	na	Depression	in drainage	non-jurisdictional
WB-29	T34NR73 W27	67	0.002	Running Dutchman Ditch Trib 2-1	na	Depression	in drainage	non-jurisdictional
WB-30	T34NR73 W27	71	0.002	Running Dutchman Ditch Trib 2-1	na	Depression	in drainage	non-jurisdictional
WB-31	T34NR73 W27	511	0.012	Running Dutchman Ditch Trib 2-1	na	Depression	in drainage	non-jurisdictional
WB-32	T34NR73 W27	111	0.003	Running Dutchman Ditch Trib 2-1	na	Depression	in drainage	non-jurisdictional
WB-33	T34NR73 W27	471	0.011	Running Dutchman Ditch Trib 2-1	na	Depression	in drainage	non-jurisdictional
WB-34	T34NR73 W28	105	0.002	Running Dutchman Ditch Trib 2-1	na	Depression	in drainage	non-jurisdictional
WB-35	T34NR73 W28	85	0.002	Running Dutchman Ditch Trib 2-1	na	Depression	in drainage	non-jurisdictional
WB-36	T34NR73 W28	275	0.006	Running Dutchman Ditch Trib 2-1	na	Depression	in drainage	non-jurisdictional
WB-37	T34NR73 W28	67	0.002	Running Dutchman Ditch Trib 2-1	na	Depression	in drainage	non-jurisdictional
WB-38	T34NR73 W28	515	0.012	Running Dutchman Ditch Trib 2-1	na	Depression	in drainage	non-jurisdictional

LUDEMAN PROJECT WETLAND SUMMARY								
WETLAND	Township Range Section	AREA (Sq Ft)	AREA (Acres)	Drainage	Wetland <sup>1</sup> Classification	Geomorphic Setting	Comments	Jurisdictional <sup>2</sup> Recommendation
WB-39	T34NR73 W28	31	0.001	Running Dutchman Ditch Trib 2-1	na	Depression	in drainage	non-jurisdictional
WB-40	T34NR73 W28	164	0.004	Running Dutchman Ditch Trib 2-1	na	Diked drainage		non-jurisdictional
WB-41	T34NR73 W28	58	0.001	Running Dutchman Ditch Trib 2-1	na	Depression	in drainage	non-jurisdictional
WB-42	T34NR73 W28	37	0.001	Running Dutchman Ditch Trib 2-1	na	Depression	in drainage	non-jurisdictional
WL-4	T34NR73 W28	1,110	0.025	Running Dutchman Ditch Trib 2-2	PEMC	Depression	in drainage	non-jurisdictional
WB-43	T34NR73 W28	221,64 3	5.088	Running Dutchman Ditch Trib 2-2	na	Diked drainage		non-jurisdictional
WB-44	T34NR73 W27	615	0.014	Running Dutchman Ditch Trib 2-2	na	Depression	in drainage	non-jurisdictional
WB-45	T34NR73 W27	296	0.007	Running Dutchman Ditch Trib 2-2	na	Depression	in drainage	non-jurisdictional
WB-46	T34NR73 W27	123	0.003	Running Dutchman Ditch Trib 2-2	na	Depression	in drainage	non-jurisdictional
WB-47	T34NR73 W27	365	0.008	Running Dutchman Ditch Trib 2-2	na	Depression	in drainage	non-jurisdictional
WB-48	T34NR73 W27	1,274	0.029	Running Dutchman Ditch Trib 2-2	na	Depression	in drainage	non-jurisdictional
WB-49	T34NR73 W27	688	0.016	Running Dutchman Ditch Trib 2-2	na	Depression	in drainage	non-jurisdictional

LUDEMAN PROJECT WETLAND SUMMARY								
WETLAND	Township Range Section	AREA (Sq Ft)	AREA (Acres)	Drainage	Wetland <sup>1</sup> Classification	Geomorphic Setting	Comments	Jurisdictional <sup>2</sup> Recommendation
WB-50	T34NR73 W27	87	0.002	Running Dutchman Ditch Trib 2-2	na	Depression	in drainage	non-jurisdictional
WB-51	T34NR73 W27	235	0.005	Running Dutchman Ditch Trib 2-2	na	Depression	in drainage	non-jurisdictional
WB-52	T34NR73 W27	52	0.001	Running Dutchman Ditch Trib 2-2	na	Depression	in drainage	non-jurisdictional
WB-53	T34NR73 W27	3,243	0.074	Running Dutchman Ditch Trib 2-2	na	Depression	in drainage	non-jurisdictional
WB-54	T34NR73 W28	2,823	0.065	Running Dutchman Ditch Trib 2-2	na	Depression	in drainage	non-jurisdictional
WB-55	T34NR73 W34	430	0.010	Running Dutchman Ditch Trib 2-2	na	Depression	in drainage	non-jurisdictional
WB-56	T34NR73 W27	349	0.008	Running Dutchman Ditch Trib 2-2	na	Depression	in drainage	non-jurisdictional
WB-57	T34NR73 W34	138	0.003	Running Dutchman Ditch Trib 2-2	na	Depression	in drainage	non-jurisdictional
WB-58	T34NR73 W34	79	0.002	Running Dutchman Ditch Trib 2-2	na	Depression	in drainage	non-jurisdictional
WB-59	T34NR73 W34	1,790	0.041	Running Dutchman Ditch Trib 2-2	na	Depression	in drainage	non-jurisdictional
WB-60	T34NR73 W34	460	0.011	Running Dutchman Ditch Trib 2-2	na	Depression	in drainage	non-jurisdictional
WB-61	T34NR73 W34	154,474	3.546	Running Dutchman Ditch Trib 2-2	na	Diked drainage	stock pond	non-jurisdictional

LUDEMAN PROJECT WETLAND SUMMARY								
WETLAND	Township Range Section	AREA (Sq Ft)	AREA (Acres)	Drainage	Wetland <sup>1</sup> Classification	Geomorphic Setting	Comments	Jurisdictional <sup>2</sup> Recommendation
WB-62	T34NR73 W34	1,266	0.029	Running Dutchman Ditch Trib 3	na	Diked drainage		non-jurisdictional
WB-63	T34NR73 W34	34,032	0.781	Running Dutchman Ditch Trib 3	na	Depression	Isolated	non-jurisdictional
WL-5	T34NR73 W35	58,042	1.332	Running Dutchman Ditch Trib 4, Trib 5	PEMA	Depression	Isolated	non-jurisdictional
WL-6	T33NR73 W02	1,117	0.026	Running Dutchman Ditch Trib 4, Trib 5	PEMK	Diked drainage	in drainage	non-jurisdictional
WB-64	T34NR73 W35	28,161	0.646	Running Dutchman Ditch Trib 4, Trib 5	na	Depression	Isolated	non-jurisdictional
WB-65	T33NR73 W02	14,853	0.341	Running Dutchman Ditch Trib 4, Trib 5	na	Diked drainage		non-jurisdictional
WB-66	T34NR73 W35	36,378	0.835	Running Dutchman Ditch Trib 4, Trib 5	na	Diked drainage	stock pond	non-jurisdictional
WL-14	T34NR73 W02	10,985	0.252	Sage Creek 1	PEMF/PUBF	Depression	Sage Creek	jurisdictional
WL-36a	T34NR73 W14	199	0.005	Sage Creek 2	PEMA	Depression	in drainage	non-jurisdictional
WL-36b	T34NR73 W14	105	0.002	Sage Creek 2	PEMA	Depression	in drainage	non-jurisdictional
WL-37a	T34NR73 W14	8,300	0.191	Sage Creek 2	PEMF/PUBF	Depression	Sage Creek	jurisdictional
WL-37b	T34NR73 W23	3,193	0.073	Sage Creek 2	PEMF/PUBF	Depression	Sage Creek	jurisdictional

LUDEMAN PROJECT WETLAND SUMMARY								
WETLAND	Township Range Section	AREA (Sq Ft)	AREA (Acres)	Drainage	Wetland <sup>1</sup> Classification	Geomorphic Setting	Comments	Jurisdictional <sup>2</sup> Recommendation
WL-37c	T34NR73 W23	63,422	1.456	Sage Creek 2	PEMF/PUBF	Depression	Sage Creek	jurisdictional
WL-37d	T34NR73 W23	1,851	0.042	Sage Creek 2	PEMF/PUBF	Depression	Sage Creek	jurisdictional
WL-37e	T34NR73 W23	868	0.020	Sage Creek 2	PEMF/PUBF	Depression	Sage Creek	jurisdictional
WL-37f	T34NR73 W23	216	0.005	Sage Creek 2	PEMF/PUBF	Depression	Sage Creek	jurisdictional
WB-134	T34NR73 W14	1,519	0.035	Sage Creek 2	na	Depression	Isolated - at windmill	non-jurisdictional
WL-34d	T34NR73 W23	26,646	0.612	Sage Creek Trib 4- 5	PEMF/PUBF	Depression	Sage Creek	jurisdictional
WL-37g	T34NR73 W23	975	0.022	Sage Creek 3	PEMF/PUBF	Depression	Sage Creek	jurisdictional
WL-37h	T34NR73 W23	431	0.010	Sage Creek 3	PEMF/PUBF	Depression	Sage Creek	jurisdictional
WL-37i	T34NR73 W23	42,076	0.966	Sage Creek 3	PEMF/PUBF	Depression	Sage Creek	jurisdictional
WL-37j	T34NR73 W26	34,387	0.789	Sage Creek 3	PEMF/PUBF	Depression	Sage Creek	jurisdictional
WL-37k	T34NR73 W25	352	0.008	Sage Creek 3	PEMF/PUBF	Depression	Sage Creek	jurisdictional
WL-37l	T34NR73 W25	238	0.005	Sage Creek 3	PEMF/PUBF	Depression	Sage Creek	jurisdictional



LUDEMAN PROJECT WETLAND SUMMARY								
WETLAND	Township Range Section	AREA (Sq Ft)	AREA (Acres)	Drainage	Wetland <sup>1</sup> Classification	Geomorphic Setting	Comments	Jurisdictional <sup>2</sup> Recommendation
WL-37m	T34NR73 W25	1,012	0.023	Sage Creek 3	PEMF/PUBF	Depression	Sage Creek	jurisdictional
WL-37n	T34NR73 W25	1,754	0.040	Sage Creek 3	PEMF/PUBF	Depression	Sage Creek	jurisdictional
WL-37o	T34NR73 W25	459	0.011	Sage Creek 3	PEMF/PUBF	Depression	Sage Creek	jurisdictional
WL-37p	T34NR73 W25	1,144	0.026	Sage Creek 3	PEMF/PUBF	Depression	Sage Creek	jurisdictional
WL-37q	T34NR73 W25	2,728	0.063	Sage Creek 3	PEMA	Depression	in drainage	non-jurisdictional
WL-37r	T34NR73 W25	13,726	0.315	Sage Creek 3	PEMA	Depression	in drainage	non-jurisdictional
WL-37s	T34NR73 W25	284,514	6.532	Sage Creek 3	PEMF/PUBF	Depression	Sage Creek	jurisdictional
WL-37t	T34NR73 W25	7,477	0.172	Sage Creek 3	PEMA	Depression	in drainage	non-jurisdictional
WL-37u	T34NR73 W25	1,059	0.024	Sage Creek 3	PEMA	Depression	in drainage	non-jurisdictional
WB-191	T34NR73 W25	7,541	0.173	Sage Creek 3	na	Depression	in drainage	non-jurisdictional
WL-37v	T34NR73 W36	4,935	0.113	Sage Creek 4	PEMF/PUBF	Depression	Sage Creek	jurisdictional
WL-37w	T34NR73 W36	4,429	0.102	Sage Creek 4	PEMA	Depression	in drainage	non-jurisdictional

LUDEMAN PROJECT WETLAND SUMMARY								
WETLAND	Township Range Section	AREA (Sq Ft)	AREA (Acres)	Drainage	Wetland <sup>1</sup> Classification	Geomorphic Setting	Comments	Jurisdictional <sup>2</sup> Recommendation
WL-37x	T34NR73 W36	450	0.010	Sage Creek 4	PEMA	Depression	in drainage	non-jurisdictional
WL-37y	T34NR73 W36	1,022	0.023	Sage Creek 4	PEMA	Depression	in drainage	non-jurisdictional
WL-37z	T34NR73 W36	892	0.020	Sage Creek 4	PEMA	Depression	in drainage	non-jurisdictional
WL-37aa	T34NR73 W36	46	0.001	Sage Creek 4	PEMA	Depression	in drainage	non-jurisdictional
WL-37bb	T34NR73 W36	256	0.006	Sage Creek 4	PEMA	Depression	in drainage	non-jurisdictional
WL-37cc	T34NR73 W36	136	0.003	Sage Creek 4	PEMA	Depression	in drainage	non-jurisdictional
WL-37dd	T34NR73 W36	101	0.002	Sage Creek 4	PEMA	Depression	in drainage	non-jurisdictional
WL-38	T34NR73 W36	59,470	1.365	Sage Creek 4	PEMF/PUBF	Slope	Sage Creek	jurisdictional
WL-39	T34NR73 W36	11,866	0.272	Sage Creek 4	PEMF/PUBF	Slope	Sage Creek	jurisdictional
WL-40	T34NR73 W36	127,257	2.921	Sage Creek 4	PEMF/PUBF	Slope	Sage Creek	jurisdictional
WL-7	T34NR73 W05	210,513	4.833	Sage Creek Trib 1	PEMC/PUBF	Depression	Isolated	non-jurisdictional
WL-8	T34NR73 W05	1,375	0.032	Sage Creek Trib 1	PEMA	Depression	Isolated	non-jurisdictional

LUDEMAN PROJECT WETLAND SUMMARY								
WETLAND	Township Range Section	AREA (Sq Ft)	AREA (Acres)	Drainage	Wetland <sup>1</sup> Classification	Geomorphic Setting	Comments	Jurisdictional <sup>2</sup> Recommendation
WL-9a	T34NR73 W05	205	0.005	Sage Creek Trib 1	PEMA	Depression	in drainage	non-jurisdictional
WL-9b	T34NR73 W05	1,505	0.035	Sage Creek Trib 1	PEMA	Depression	in drainage	non-jurisdictional
WL-9c	T34NR73 W05	139	0.003	Sage Creek Trib 1	PEMA	Depression	in drainage	non-jurisdictional
WL-9d	T34NR73 W05	21,772	0.500	Sage Creek Trib 1	PEMA	Depression	in drainage	non-jurisdictional
WL-9e	T34NR73 W05	44,258	1.016	Sage Creek Trib 1	PEMA	Depression	in drainage	non-jurisdictional
WL-9f	T34NR73 W05	1,991	0.046	Sage Creek Trib 1	PEMA	Depression	in drainage	non-jurisdictional
WL-9g	T34NR73 W06	860	0.020	Sage Creek Trib 1	PEMA	Depression	in drainage	non-jurisdictional
WL-9h	T34NR73 W05	1,185	0.027	Sage Creek Trib 1	PEMA	Depression	in drainage	non-jurisdictional
WL-12	T34NR73 W03	2,346	0.054	Sage Creek Trib 2	PEMC	Depression	in drainage	non-jurisdictional
WL-13	T34NR73 W03	2,863	0.066	Sage Creek Trib 2	PEMK	Depression	Isolated - at windmill	non-jurisdictional
WL-10	T34NR73 W04	23,067	0.530	Sage Creek Trib 3	PEMA	Depression	Isolated	non-jurisdictional
WL-11a	T34NR73 W04	100	0.002	Sage Creek Trib 3	PEMA	Depression	in drainage	non-jurisdictional

LUDEMAN PROJECT WETLAND SUMMARY								
WETLAND	Township Range Section	AREA (Sq Ft)	AREA (Acres)	Drainage	Wetland <sup>1</sup> Classification	Geomorphic Setting	Comments	Jurisdictional <sup>2</sup> Recommendation
WL-11b	T34NR73 W04	470	0.011	Sage Creek Trib 3	PEMA	Depression	in drainage	non-jurisdictional
WB-67	T34NR73 W04	46,849	1.076	Sage Creek Trib 3	na	Diked drainage		non-jurisdictional
WB-68	T34NR73 W04	41	0.001	Sage Creek Trib 3	na	Depression	in drainage	non-jurisdictional
WB-69	T34NR73 W04	53	0.001	Sage Creek Trib 3	na	Depression	in drainage	non-jurisdictional
WB-70	T34NR73 W04	84	0.002	Sage Creek Trib 3	na	Depression	in drainage	non-jurisdictional
WB-71	T34NR73 W04	97	0.002	Sage Creek Trib 3	na	Depression	in drainage	non-jurisdictional
WB-72	T34NR73 W04	64	0.001	Sage Creek Trib 3	na	Depression	in drainage	non-jurisdictional
WB-73	T34NR73 W04	90	0.002	Sage Creek Trib 3	na	Depression	in drainage	non-jurisdictional
WB-74	T34NR73 W04	344	0.008	Sage Creek Trib 3	na	Depression	in drainage	non-jurisdictional
WB-75	T34NR73 W04	290	0.007	Sage Creek Trib 3	na	Depression	in drainage	non-jurisdictional
WB-76	T34NR73 W04	75	0.002	Sage Creek Trib 3	na	Depression	in drainage	non-jurisdictional
WB-77	T34NR73 W03	212	0.005	Sage Creek Trib 3	na	Depression	in drainage	non-jurisdictional

LUDEMAN PROJECT WETLAND SUMMARY								
WETLAND	Township Range Section	AREA (Sq Ft)	AREA (Acres)	Drainage	Wetland <sup>1</sup> Classification	Geomorphic Setting	Comments	Jurisdictional <sup>2</sup> Recommendation
WB-78	T34NR73 W03	13,645	0.313	Sage Creek Trib 3	na	Depression	in drainage	non-jurisdictional
WB-79	T34NR73 W03	505	0.012	Sage Creek Trib 3	na	Depression	in drainage	non-jurisdictional
WL-15a	T34NR73 W08	126	0.003	Sage Creek Trib 4 N1	PEMA	Depression	in drainage	non-jurisdictional
WL-15b	T34NR73 W08	49	0.001	Sage Creek Trib 4 N1	PEMA	Depression	in drainage	non-jurisdictional
WL-15c	T34NR73 W08	237	0.005	Sage Creek Trib 4 N1	PEMA	Depression	in drainage	non-jurisdictional
WL-15d	T34NR73 W08	387	0.009	Sage Creek Trib 4 N1	PEMA	Depression	in drainage	non-jurisdictional
WL-15e	T34NR73 W08	97	0.002	Sage Creek Trib 4 N1	PEMA	Depression	in drainage	non-jurisdictional
WL-15f	T34NR73 W08	101	0.002	Sage Creek Trib 4 N1	PEMA	Depression	in drainage	non-jurisdictional
WL-15g	T34NR73 W08	137	0.003	Sage Creek Trib 4 N1	PEMA	Depression	in drainage	non-jurisdictional
WL-15h	T34NR73 W08	222	0.005	Sage Creek Trib 4 N1	PEMA	Depression	in drainage	non-jurisdictional
WL-24	T34NR73 W08	105	0.002	Sage Creek Trib 4 N1	PEMA	Depression	in drainage	non-jurisdictional
WB-80	T34NR73 W08	14,431	0.331	Sage Creek Trib 4 N1	na	Depression	Isolated	non-jurisdictional

LUDEMAN PROJECT WETLAND SUMMARY								
WETLAND	Township Range Section	AREA (Sq Ft)	AREA (Acres)	Drainage	Wetland <sup>1</sup> Classification	Geomorphic Setting	Comments	Jurisdictional <sup>2</sup> Recommendation
WB-81	T34NR73 W08	28,592	0.656	Sage Creek Trib 4 N1	na	Diked drainage		non-jurisdictional
WL-15i	T34NR73 W08	99	0.002	Sage Creek Trib 4 N2	PEMA	Depression	in drainage	non-jurisdictional
WL-15j	T34NR73 W08	630	0.014	Sage Creek Trib 4 N2	PEMA	Depression	in drainage	non-jurisdictional
WL-15k	T34NR73 W09	72	0.002	Sage Creek Trib 4 N2	PEMA	Depression	in drainage	non-jurisdictional
WL-15l	T34NR73 W09	288	0.007	Sage Creek Trib 4 N2	PEMA	Depression	in drainage	non-jurisdictional
WL-15m	T34NR73 W09	298	0.007	Sage Creek Trib 4 N2	PEMA	Depression	in drainage	non-jurisdictional
WL-15n	T34NR73 W09	115	0.003	Sage Creek Trib 4 N2	PEMA	Depression	in drainage	non-jurisdictional
WL-15o	T34NR73 W09	337	0.008	Sage Creek Trib 4 N2	PEMA	Depression	in drainage	non-jurisdictional
WL-15p	T34NR73 W09	131	0.003	Sage Creek Trib 4 N2	PEMA	Depression	in drainage	non-jurisdictional
WL-15q	T34NR73 W09	99	0.002	Sage Creek Trib 4 N2	PEMA	Depression	in drainage	non-jurisdictional
WL-27a	T34NR73 W21	1,497	0.034	Sage Creek Trib 4 S1	PEMA	Depression	in drainage	non-jurisdictional
WL-27b	T34NR73 W22	2,557	0.059	Sage Creek Trib 4 S1	PEMA	Depression	in drainage	non-jurisdictional



LUDEMAN PROJECT WETLAND SUMMARY								
WETLAND	Township Range Section	AREA (Sq Ft)	AREA (Acres)	Drainage	Wetland <sup>1</sup> Classification	Geomorphic Setting	Comments	Jurisdictional <sup>2</sup> Recommendation
WL-29a	T34NR73 W22	57	0.001	Sage Creek Trib 4 S1	PEMA	Depression	in drainage	non-jurisdictional
WL-29d	T34NR73 W22	196	0.005	Sage Creek Trib 4 S1	PEMA	Depression	in drainage	non-jurisdictional
WL-29e	T34NR73 W22	28	0.001	Sage Creek Trib 4 S1	PEMA	Depression	in drainage	non-jurisdictional
WL-29f	T34NR73 W22	110	0.003	Sage Creek Trib 4 S1	PEMA	Depression	in drainage	non-jurisdictional
WL-29g	T34NR73 W22	294	0.007	Sage Creek Trib 4 S1	PEMA	Depression	in drainage	non-jurisdictional
WL-29h	T34NR73 W22	566	0.013	Sage Creek Trib 4 S1	PEMA	Depression	in drainage	non-jurisdictional
WL-29i	T34NR73 W22	79	0.002	Sage Creek Trib 4 S1	PEMA	Depression	in drainage	non-jurisdictional
WL-29j	T34NR73 W22	124	0.003	Sage Creek Trib 4 S1	PEMA	Depression	in drainage	non-jurisdictional
WL-29k	T34NR73 W22	359	0.008	Sage Creek Trib 4 S1	PEMA	Depression	in drainage	non-jurisdictional
WL-29l	T34NR73 W22	140	0.003	Sage Creek Trib 4 S1	PEMA	Depression	in drainage	non-jurisdictional
WL-29m	T34NR73 W22	429	0.010	Sage Creek Trib 4 S1	PEMA	Depression	in drainage	non-jurisdictional
WL-29n	T34NR73 W22	2,446	0.056	Sage Creek Trib 4 S1	PEMA	Depression	in drainage	non-jurisdictional

LUDEMAN PROJECT WETLAND SUMMARY								
WETLAND	Township Range Section	AREA (Sq Ft)	AREA (Acres)	Drainage	Wetland <sup>1</sup> Classification	Geomorphic Setting	Comments	Jurisdictional <sup>2</sup> Recommendation
WL-29o	T34NR73 W22	49	0.001	Sage Creek Trib 4 S1	PEMA	Depression	in drainage	non-jurisdictional
WL-29p	T34NR73 W22	36	0.001	Sage Creek Trib 4 S1	PEMA	Depression	in drainage	non-jurisdictional
WL-29q	T34NR73 W22	71	0.002	Sage Creek Trib 4 S1	PEMA	Depression	in drainage	non-jurisdictional
WL-29r	T34NR73 W22	70	0.002	Sage Creek Trib 4 S1	PEMA	Depression	in drainage	non-jurisdictional
WB-103	T34NR73 W21	15,697	0.360	Sage Creek Trib 4 S1	na	Depression	Isolated	non-jurisdictional
WB-104	T34NR73 W22	53	0.001	Sage Creek Trib 4 S1	na	Depression	in drainage	non-jurisdictional
WB-105	T34NR73 W22	49	0.001	Sage Creek Trib 4 S1	na	Depression	in drainage	non-jurisdictional
WB-106	T34NR73 W22	34	0.001	Sage Creek Trib 4 S1	na	Depression	in drainage	non-jurisdictional
WB-107	T34NR73 W22	125	0.003	Sage Creek Trib 4 S1	na	Depression	in drainage	non-jurisdictional
WB-108	T34NR73 W22	99	0.002	Sage Creek Trib 4 S1	na	Depression	in drainage	non-jurisdictional
WL-29b	T34NR73 W22	382	0.009	Sage Creek Trib 4 S2	PEMA	Depression	in drainage	non-jurisdictional
WL-29c	T34NR73 W22	1,228	0.028	Sage Creek Trib 4 S2	PEMA	Depression	in drainage	non-jurisdictional

LUDEMAN PROJECT WETLAND SUMMARY								
WETLAND	Township Range Section	AREA (Sq Ft)	AREA (Acres)	Drainage	Wetland <sup>1</sup> Classification	Geomorphic Setting	Comments	Jurisdictional <sup>2</sup> Recommendation
WL-29s	T34NR73 W22	193	0.004	Sage Creek Trib 4 S2	PEMA	Depression	in drainage	non-jurisdictional
WL-29t	T34NR73 W22	246	0.006	Sage Creek Trib 4 S2	PEMA	Depression	in drainage	non-jurisdictional
WL-29u	T34NR73 W22	169	0.004	Sage Creek Trib 4 S2	PEMA	Depression	in drainage	non-jurisdictional
WL-29v	T34NR73 W22	421	0.010	Sage Creek Trib 4 S2	PEMA	Depression	in drainage	non-jurisdictional
WL-29w	T34NR73 W22	433	0.010	Sage Creek Trib 4 S2	PEMA	Depression	in drainage	non-jurisdictional
WL-29x	T34NR73 W22	477	0.011	Sage Creek Trib 4 S2	PEMA	Depression	in drainage	non-jurisdictional
WL-29y	T34NR73 W22	284	0.007	Sage Creek Trib 4 S2	PEMA	Depression	in drainage	non-jurisdictional
WL-29z	T34NR73 W22	230	0.005	Sage Creek Trib 4 S2	PEMA	Depression	in drainage	non-jurisdictional
WL-29aa	T34NR73 W22	387	0.009	Sage Creek Trib 4 S2	PEMA	Depression	in drainage	non-jurisdictional
WL-29bb	T34NR73 W22	5,523	0.127	Sage Creek Trib 4 S2	PEMA	Depression	in drainage	non-jurisdictional
WL-29cc	T34NR73 W22	97	0.002	Sage Creek Trib 4 S2	PEMA	Depression	in drainage	non-jurisdictional
WL-29dd	T34NR73 W22	3,972	0.091	Sage Creek Trib 4 S2	PEMA	Depression	in drainage	non-jurisdictional

LUDEMAN PROJECT WETLAND SUMMARY								
WETLAND	Township Range Section	AREA (Sq Ft)	AREA (Acres)	Drainage	Wetland <sup>1</sup> Classification	Geomorphic Setting	Comments	Jurisdictional <sup>2</sup> Recommendation
WB-109	T34NR73 W22	194	0.004	Sage Creek Trib 4 S2	na	Depression	in drainage	non-jurisdictional
WB-110	T34NR73 W22	2,322	0.053	Sage Creek Trib 4 S2	na	Depression	in drainage	non-jurisdictional
WB-98	T34NR73 W19	111,485	2.559	Sage Creek Trib 4 W1	na	Diked drainage		non-jurisdictional
WB-99	T34NR73 W19	7,856	0.180	Sage Creek Trib 4 W1	na	Depression	in drainage	non-jurisdictional
WL-25a	T34NR73 W20	502	0.012	Sage Creek Trib 4 W2	PEMA	Depression	in drainage	non-jurisdictional
WL-25b	T34NR73 W20	107	0.002	Sage Creek Trib 4 W2	PEMA	Depression	in drainage	non-jurisdictional
WB-100	T34NR73 W20	175	0.004	Sage Creek Trib 4 W2	na	Depression	in drainage	non-jurisdictional
WB-101	T34NR73 W20	52	0.001	Sage Creek Trib 4 W2	na	Depression	in drainage	non-jurisdictional
WB-102	T34NR73 W20	31,598	0.725	Sage Creek Trib 4 W2	na	Diked drainage		non-jurisdictional
WL-19a	T34NR74 W12	1,322	0.030	Sage Creek Trib 4, NW 1	PEMA	Depression	in drainage	non-jurisdictional
WL-19b	T34NR74 W12	2,953	0.068	Sage Creek Trib 4, NW 1	PEMA	Depression	in drainage	non-jurisdictional
WL-20	T34NR74 W12	1,520	0.035	Sage Creek Trib 4, NW 1	PEMK	Depression	Isolated - at windmill	non-jurisdictional

LUDEMAN PROJECT WETLAND SUMMARY								
WETLAND	Township Range Section	AREA (Sq Ft)	AREA (Acres)	Drainage	Wetland <sup>1</sup> Classification	Geomorphic Setting	Comments	Jurisdictional <sup>2</sup> Recommendation
WL-21a	T34NR73 W07	237	0.005	Sage Creek Trib 4, NW 1	PEMA	Depression	in drainage	non-jurisdictional
WL-21b	T34NR73 W07	1,519	0.035	Sage Creek Trib 4, NW 1	PEMA	Depression	in drainage	non-jurisdictional
WL-21c	T34NR73 W07	611	0.014	Sage Creek Trib 4, NW 1	PEMA	Depression	in drainage	non-jurisdictional
WL-21d	T34NR73 W07	745	0.017	Sage Creek Trib 4, NW 1	PEMA	Depression	in drainage	non-jurisdictional
WL-21e	T34NR73 W07	79	0.002	Sage Creek Trib 4, NW 1	PEMA	Depression	in drainage	non-jurisdictional
WL-21f	T34NR73 W07	124	0.003	Sage Creek Trib 4, NW 1	PEMA	Depression	in drainage	non-jurisdictional
WL-21g	T34NR73 W07	233	0.005	Sage Creek Trib 4, NW 1	PEMA	Depression	in drainage	non-jurisdictional
WL-21h	T34NR73 W07	280	0.006	Sage Creek Trib 4, NW 1	PEMA	Depression	in drainage	non-jurisdictional
WL-21i	T34NR73 W07	224	0.005	Sage Creek Trib 4, NW 1	PEMA	Depression	in drainage	non-jurisdictional
WL-21j	T34NR73 W07	19	0.000	Sage Creek Trib 4, NW 1	PEMA	Depression	in drainage	non-jurisdictional
WB-92	T34NR74 W12	27,861	0.640	Sage Creek Trib 4, NW 1	na	Diked drainage		non-jurisdictional
WB-93	T34NR74 W12	6,486	0.149	Sage Creek Trib 4, NW 1	na	Diked drainage		non-jurisdictional

LUDEMAN PROJECT WETLAND SUMMARY								
WETLAND	Township Range Section	AREA (Sq Ft)	AREA (Acres)	Drainage	Wetland <sup>1</sup> Classification	Geomorphic Setting	Comments	Jurisdictional <sup>2</sup> Recommendation
WB-94	T34NR73 W07	68,217	1.566	Sage Creek Trib 4, NW 1	na	Diked drainage		non-jurisdictional
WB-95	T34NR73 W18	798	0.018	Sage Creek Trib 4, NW 1	na	Depression	Isolated - at windmill	non-jurisdictional
WL-22	T34NR73 W17	25,246	0.580	Sage Creek Trib 4, NW 2	PEMK	Diked drainage	in drainage	non-jurisdictional
WL-23a	T34NR73 W17	78	0.002	Sage Creek Trib 4, NW 2	PEMA	Depression	in drainage	non-jurisdictional
WL-23b	T34NR73 W17	1,025	0.024	Sage Creek Trib 4, NW 2	PEMA	Depression	in drainage	non-jurisdictional
WB-96	T34NR73 W17	1,361	0.031	Sage Creek Trib 4, NW 2	na	Depression	Isolated	non-jurisdictional
WB-97	T34NR73 W17	793	0.018	Sage Creek Trib 4, NW 2	na	Depression	in drainage	non-jurisdictional
WL-16	T34NR73 W09	56,146	1.289	Sage Creek Trib 4- 1	PEMA	Depression	Isolated	non-jurisdictional
WL-17	T34NR73 W16	6,273	0.144	Sage Creek Trib 4- 1	PEMC	Depression	in drainage	non-jurisdictional
WB-82	T34NR73 W09	21,817	0.501	Sage Creek Trib 4- 1	na	Depression	Isolated	non-jurisdictional
WB-83	T34NR73 W09	1,049	0.024	Sage Creek Trib 4- 1	na	Depression	in drainage	non-jurisdictional
WB-84	T34NR73 W09	143	0.003	Sage Creek Trib 4- 1	na	Depression	in drainage	non-jurisdictional



LUDEMAN PROJECT WETLAND SUMMARY								
WETLAND	Township Range Section	AREA (Sq Ft)	AREA (Acres)	Drainage	Wetland <sup>1</sup> Classification	Geomorphic Setting	Comments	Jurisdictional <sup>2</sup> Recommendation
WB-85	T34NR73 W09	70,570	1.620	Sage Creek Trib 4- 1	na	Diked drainage		non-jurisdictional
WB-86	T34NR73 W09	1,148	0.026	Sage Creek Trib 4- 1	na	Depression	in drainage	non-jurisdictional
WB-87	T34NR73 W09	855	0.020	Sage Creek Trib 4- 1	na	Depression	in drainage	non-jurisdictional
WB-88	T34NR73 W09	398	0.009	Sage Creek Trib 4- 1	na	Depression	in drainage	non-jurisdictional
WB-89	T34NR73 W16	52,417	1.203	Sage Creek Trib 4- 1	na	Depression	Isolated	non-jurisdictional
WB-90	T34NR73 W16	3,316	0.076	Sage Creek Trib 4- 1	na	Depression	in drainage	non-jurisdictional
WL-18a	T34NR73 W17	10,268	0.236	Sage Creek Trib 4- 2	PEMC	Depression	in drainage	non-jurisdictional
WL-18b	T34NR73 W20	1,087	0.025	Sage Creek Trib 4- 2	PEMC	Depression	in drainage	non-jurisdictional
WL-18c	T34NR73 W17	27,794	0.638	Sage Creek Trib 4- 2	PEMC	Depression	in drainage	non-jurisdictional
WL-18d	T34NR73 W17	451	0.010	Sage Creek Trib 4- 2	PEMC	Depression	in drainage	non-jurisdictional
WL-18e	T34NR73 W21	4,538	0.104	Sage Creek Trib 4- 2	PEMC	Depression	in drainage	non-jurisdictional
WL-18f	T34NR73 W21	518	0.012	Sage Creek Trib 4- 2	PEMC	Depression	in drainage	non-jurisdictional

LUDEMAN PROJECT WETLAND SUMMARY								
WETLAND	Township Range Section	AREA (Sq Ft)	AREA (Acres)	Drainage	Wetland <sup>1</sup> Classification	Geomorphic Setting	Comments	Jurisdictional <sup>2</sup> Recommendation
WL-18g	T34NR73 W21	33	0.001	Sage Creek Trib 4- 2	PEMC	Depression	in drainage	non-jurisdictional
WL-18h	T34NR73 W21	3,070	0.070	Sage Creek Trib 4- 2	PEMC	Depression	in drainage	non-jurisdictional
WL-18i	T34NR73 W21	97	0.002	Sage Creek Trib 4- 2	PEMC	Depression	in drainage	non-jurisdictional
WL-18j	T34NR73 W21	47	0.001	Sage Creek Trib 4- 2	PEMC	Depression	in drainage	non-jurisdictional
WL-18k	T34NR73 W21	382	0.009	Sage Creek Trib 4- 2	PEMC	Depression	in drainage	non-jurisdictional
WL-18l	T34NR73 W16	648	0.015	Sage Creek Trib 4- 2	PEMC	Depression	in drainage	non-jurisdictional
WL-18m	T34NR73 W16	384	0.009	Sage Creek Trib 4- 2	PEMC	Depression	in drainage	non-jurisdictional
WL-18n	T34NR73 W16	1,643	0.038	Sage Creek Trib 4- 2	PEMC	Depression	in drainage	non-jurisdictional
WL-18o	T34NR73 W16	1,858	0.043	Sage Creek Trib 4- 2	PEMC	Depression	in drainage	non-jurisdictional
WL-18p	T34NR73 W16	450	0.010	Sage Creek Trib 4- 2	PEMC	Depression	in drainage	non-jurisdictional
WL-18q	T34NR73 W21	124	0.003	Sage Creek Trib 4- 2	PEMC	Depression	in drainage	non-jurisdictional
WL-18r	T34NR73 W21	98	0.002	Sage Creek Trib 4- 2	PEMC	Depression	in drainage	non-jurisdictional

LUDEMAN PROJECT WETLAND SUMMARY								
WETLAND	Township Range Section	AREA (Sq Ft)	AREA (Acres)	Drainage	Wetland <sup>1</sup> Classification	Geomorphic Setting	Comments	Jurisdictional <sup>2</sup> Recommendation
WL-18s	T34NR73 W21	1,060	0.024	Sage Creek Trib 4- 2	PEMC	Depression	in drainage	non-jurisdictional
WL-18t	T34NR73 W21	233	0.005	Sage Creek Trib 4- 2	PEMC	Depression	in drainage	non-jurisdictional
WB-91	T34NR73 W16	16,589	0.381	Sage Creek Trib 4- 2	na	Diked drainage		non-jurisdictional
WL-26a	T34NR73 W21	127	0.003	Sage Creek Trib 4- 3	PEMA	Depression	in drainage	non-jurisdictional
WL-26b	T34NR73 W21	210	0.005	Sage Creek Trib 4- 3	PEMA	Depression	in drainage	non-jurisdictional
WL-26c	T34NR73 W21	90	0.002	Sage Creek Trib 4- 3	PEMA	Depression	in drainage	non-jurisdictional
WL-26d	T34NR73 W21	2,818	0.065	Sage Creek Trib 4- 3	PEMA	Depression	in drainage	non-jurisdictional
WL-26e	T34NR73 W21	1,901	0.044	Sage Creek Trib 4- 3	PEMA	Depression	in drainage	non-jurisdictional
WL-26f	T34NR73 W21	197	0.005	Sage Creek Trib 4- 3	PEMA	Depression	in drainage	non-jurisdictional
WL-26g	T34NR73 W21	21,230	0.487	Sage Creek Trib 4- 3	PEMA	Depression	in drainage	non-jurisdictional
WL-26h	T34NR73 W21	3,142	0.072	Sage Creek Trib 4- 3	PEMA	Depression	in drainage	non-jurisdictional
WL-26i	T34NR73 W21	5,779	0.133	Sage Creek Trib 4- 3	PEMA	Depression	in drainage	non-jurisdictional

LUDEMAN PROJECT WETLAND SUMMARY								
WETLAND	Township Range Section	AREA (Sq Ft)	AREA (Acres)	Drainage	Wetland <sup>1</sup> Classification	Geomorphic Setting	Comments	Jurisdictional <sup>2</sup> Recommendation
WL-30a	T34NR73 W22	299	0.007	Sage Creek Trib 4- 4	PEMA	Depression	in drainage	non-jurisdictional
WL-30b	T34NR73 W22	164	0.004	Sage Creek Trib 4- 4	PEMA	Depression	in drainage	non-jurisdictional
WL-30c	T34NR73 W22	77	0.002	Sage Creek Trib 4- 4	PEMA	Depression	in drainage	non-jurisdictional
WL-30d	T34NR73 W22	79	0.002	Sage Creek Trib 4- 4	PEMA	Depression	in drainage	non-jurisdictional
WL-31a	T34NR73 W22	321	0.007	Sage Creek Trib 4- 4	PEMA	Depression	in drainage	non-jurisdictional
WL-31b	T34NR73 W22	224	0.005	Sage Creek Trib 4- 4	PEMA	Depression	in drainage	non-jurisdictional
WL-31c	T34NR73 W22	254	0.006	Sage Creek Trib 4- 4	PEMA	Depression	in drainage	non-jurisdictional
WL-31d	T34NR73 W22	65	0.001	Sage Creek Trib 4- 4	PEMA	Depression	in drainage	non-jurisdictional
WL-31e	T34NR73 W22	173	0.004	Sage Creek Trib 4- 4	PEMA	Depression	in drainage	non-jurisdictional
WL-31f	T34NR73 W22	72	0.002	Sage Creek Trib 4- 4	PEMA	Depression	in drainage	non-jurisdictional
WL-31g	T34NR73 W22	498	0.011	Sage Creek Trib 4- 4	PEMA	Depression	in drainage	non-jurisdictional
WL-31h	T34NR73 W22	504	0.012	Sage Creek Trib 4- 4	PEMA	Depression	in drainage	non-jurisdictional

LUDEMAN PROJECT WETLAND SUMMARY								
WETLAND	Township Range Section	AREA (Sq Ft)	AREA (Acres)	Drainage	Wetland <sup>1</sup> Classification	Geomorphic Setting	Comments	Jurisdictional <sup>2</sup> Recommendation
WL-31i	T34NR73 W22	269	0.006	Sage Creek Trib 4- 4	PEMA	Depression	in drainage	non-jurisdictional
WL-31j	T34NR73 W22	54	0.001	Sage Creek Trib 4- 4	PEMA	Depression	in drainage	non-jurisdictional
WL-31k	T34NR73 W22	27	0.001	Sage Creek Trib 4- 4	PEMA	Depression	in drainage	non-jurisdictional
WL-31l	T34NR73 W22	128	0.003	Sage Creek Trib 4- 4	PEMA	Depression	in drainage	non-jurisdictional
WL-31m	T34NR73 W22	96	0.002	Sage Creek Trib 4- 4	PEMA	Depression	in drainage	non-jurisdictional
WL-31n	T34NR73 W22	214	0.005	Sage Creek Trib 4- 4	PEMA	Depression	in drainage	non-jurisdictional
WL-31o	T34NR73 W23	855	0.020	Sage Creek Trib 4- 4	PEMA	Depression	in drainage	non-jurisdictional
WL-31p	T34NR73 W23	27	0.001	Sage Creek Trib 4- 4	PEMA	Depression	in drainage	non-jurisdictional
WL-31q	T34NR73 W23	1,048	0.024	Sage Creek Trib 4- 4	PEMA	Depression	in drainage	non-jurisdictional
WL-31r	T34NR73 W23	456	0.010	Sage Creek Trib 4- 4	PEMA	Depression	in drainage	non-jurisdictional
WL-31s	T34NR73 W23	1,206	0.028	Sage Creek Trib 4- 4	PEMA	Depression	in drainage	non-jurisdictional
WL-31t	T34NR73 W23	79	0.002	Sage Creek Trib 4- 4	PEMA	Depression	in drainage	non-jurisdictional

LUDEMAN PROJECT WETLAND SUMMARY								
WETLAND	Township Range Section	AREA (Sq Ft)	AREA (Acres)	Drainage	Wetland <sup>1</sup> Classification	Geomorphic Setting	Comments	Jurisdictional <sup>2</sup> Recommendation
WL-31u	T34NR73 W23	12,598	0.289	Sage Creek Trib 4- 4	PEMA	Depression	in drainage	non-jurisdictional
WL-31v	T34NR73 W23	3,468	0.080	Sage Creek Trib 4- 4	PEMA	Depression	in drainage	non-jurisdictional
WL-31w	T34NR73 W23	175	0.004	Sage Creek Trib 4- 4	PEMA	Depression	in drainage	non-jurisdictional
WL-31x	T34NR73 W23	127	0.003	Sage Creek Trib 4- 4	PEMA	Depression	in drainage	non-jurisdictional
WL-31y	T34NR73 W23	384	0.009	Sage Creek Trib 4- 4	PEMA	Depression	in drainage	non-jurisdictional
WL-32a	T34NR73 W22	2,315	0.053	Sage Creek Trib 4- 4	PEMA	Depression	in drainage	non-jurisdictional
WL-32b	T34NR73 W23	910	0.021	Sage Creek Trib 4- 4	PEMA	Depression	in drainage	non-jurisdictional
WL-32c	T34NR73 W23	88	0.002	Sage Creek Trib 4- 4	PEMA	Depression	in drainage	non-jurisdictional
WL-32d	T34NR73 W23	99	0.002	Sage Creek Trib 4- 4	PEMA	Depression	in drainage	non-jurisdictional
WL-33a	T34NR73 W23	8,077	0.185	Sage Creek Trib 4- 4	PEMA	Depression	in drainage	non-jurisdictional
WL-33b	T34NR73 W23	131	0.003	Sage Creek Trib 4- 4	PEMA	Depression	in drainage	non-jurisdictional
WL-33c	T34NR73 W23	168	0.004	Sage Creek Trib 4- 4	PEMA	Depression	in drainage	non-jurisdictional



LUDEMAN PROJECT WETLAND SUMMARY								
WETLAND	Township Range Section	AREA (Sq Ft)	AREA (Acres)	Drainage	Wetland <sup>1</sup> Classification	Geomorphic Setting	Comments	Jurisdictional <sup>2</sup> Recommendation
WL-33d	T34NR73 W23	278	0.006	Sage Creek Trib 4- 4	PEMA	Depression	in drainage	non-jurisdictional
WL-33e	T34NR73 W22	94	0.002	Sage Creek Trib 4- 4	PEMA	Depression	in drainage	non-jurisdictional
WB-111	T34NR73 W22	142	0.003	Sage Creek Trib 4- 4	na	Depression	in drainage	non-jurisdictional
WL-34a	T34NR73 W23	1,066	0.024	Sage Creek Trib 4- 5	PEMA	Depression	in drainage	non-jurisdictional
WL-34b	T34NR73 W23	721	0.017	Sage Creek Trib 4- 5	PEMA	Depression	in drainage	non-jurisdictional
WL-34c	T34NR73 W23	270	0.006	Sage Creek Trib 4- 5	PEMA	Depression	in drainage	non-jurisdictional
WB-112	T34NR73 W23	367	0.008	Sage Creek Trib 4- 5	na	Depression	in drainage	non-jurisdictional
WB-113	T34NR73 W23	98	0.002	Sage Creek Trib 4- 5	na	Depression	in drainage	non-jurisdictional
WB-114	T34NR73 W23	462	0.011	Sage Creek Trib 4- 5	na	Depression	in drainage	non-jurisdictional
WB-115	T34NR73 W23	107	0.002	Sage Creek Trib 4- 5	na	Depression	in drainage	non-jurisdictional
WB-116	T34NR73 W23	197	0.005	Sage Creek Trib 4- 5	na	Depression	in drainage	non-jurisdictional
WB-117	T34NR73 W23	246	0.006	Sage Creek Trib 4- 5	na	Depression	in drainage	non-jurisdictional

LUDEMAN PROJECT WETLAND SUMMARY								
WETLAND	Township Range Section	AREA (Sq Ft)	AREA (Acres)	Drainage	Wetland <sup>1</sup> Classification	Geomorphic Setting	Comments	Jurisdictional <sup>2</sup> Recommendation
WB-118	T34NR73 W23	229	0.005	Sage Creek Trib 4- 5	na	Depression	in drainage	non-jurisdictional
WB-119	T34NR73 W23	193	0.004	Sage Creek Trib 4- 5	na	Depression	in drainage	non-jurisdictional
WB-120	T34NR73 W23	138	0.003	Sage Creek Trib 4- 5	na	Depression	in drainage	non-jurisdictional
WB-121	T34NR73 W23	44	0.001	Sage Creek Trib 4- 5	na	Depression	in drainage	non-jurisdictional
WB-122	T34NR73 W23	73	0.002	Sage Creek Trib 4- 5	na	Depression	in drainage	non-jurisdictional
WB-123	T34NR73 W23	99	0.002	Sage Creek Trib 4- 5	na	Depression	in drainage	non-jurisdictional
WB-124	T34NR73 W23	28	0.001	Sage Creek Trib 4- 5	na	Depression	in drainage	non-jurisdictional
WB-125	T34NR73 W23	127	0.003	Sage Creek Trib 4- 5	na	Depression	in drainage	non-jurisdictional
WB-126	T34NR73 W23	294	0.007	Sage Creek Trib 4- 5	na	Depression	in drainage	non-jurisdictional
WB-127	T34NR73 W23	28	0.001	Sage Creek Trib 4- 5	na	Depression	in drainage	non-jurisdictional
WB-128	T34NR73 W23	72	0.002	Sage Creek Trib 4- 5	na	Depression	in drainage	non-jurisdictional
WB-129	T34NR73 W23	988	0.023	Sage Creek Trib 4- 5	na	Depression	in drainage	non-jurisdictional

LUDEMAN PROJECT WETLAND SUMMARY								
WETLAND	Township Range Section	AREA (Sq Ft)	AREA (Acres)	Drainage	Wetland <sup>1</sup> Classification	Geomorphic Setting	Comments	Jurisdictional <sup>2</sup> Recommendation
WB-130	T34NR73 W23	453	0.010	Sage Creek Trib 4- 5	na	Depression	in drainage	non-jurisdictional
WB-131	T34NR73 W23	297	0.007	Sage Creek Trib 4- 5	na	Depression	in drainage	non-jurisdictional
WL-28	T34NR73 W15	311	0.007	Sage Creek Trib 5	PEMA	Depression	in drainage	non-jurisdictional
WL-35a	T34NR73 W14	141	0.003	Sage Creek Trib 5	PEMA	Depression	in drainage	non-jurisdictional
WL-35b	T34NR73 W14	1,836	0.042	Sage Creek Trib 5	PEMA	Depression	in drainage	non-jurisdictional
WL-35c	T34NR73 W14	40	0.001	Sage Creek Trib 5	PEMA	Depression	in drainage	non-jurisdictional
WL-35d	T34NR73 W14	633	0.015	Sage Creek Trib 5	PEMA	Depression	in drainage	non-jurisdictional
WL-35e	T34NR73 W14	766	0.018	Sage Creek Trib 5	PEMA	Depression	in drainage	non-jurisdictional
WB-132	T34NR73 W10	24,820	0.570	Sage Creek Trib 5	na	Diked drainage		non-jurisdictional
WB-133	T34NR73 W15	69	0.002	Sage Creek Trib 5	na	Depression	in drainage	non-jurisdictional
WL-43a	T34NR73 W26	5,432	0.125	Sage Creek Trib 6	PEMA	Diked drainage	in drainage	non-jurisdictional
WL-43b	T34NR73 W26	48	0.001	Sage Creek Trib 6	PEMA	Depression	in drainage	non-jurisdictional

LUDEMAN PROJECT WETLAND SUMMARY								
WETLAND	Township Range Section	AREA (Sq Ft)	AREA (Acres)	Drainage	Wetland <sup>1</sup> Classification	Geomorphic Setting	Comments	Jurisdictional <sup>2</sup> Recommendation
WL-43c	T34NR73 W23	63	0.001	Sage Creek Trib 6	PEMA	Depression	in drainage	non-jurisdictional
WL-43d	T34NR73 W23	300	0.007	Sage Creek Trib 6	PEMA	Depression	in drainage	non-jurisdictional
WB-135	T34NR73 W26	62	0.001	Sage Creek Trib 6	na	Depression	in drainage	non-jurisdictional
WB-136	T34NR73 W26	104	0.002	Sage Creek Trib 6	na	Depression	in drainage	non-jurisdictional
WB-137	T34NR73 W26	89	0.002	Sage Creek Trib 6	na	Depression	in drainage	non-jurisdictional
WB-138	T34NR73 W26	313	0.007	Sage Creek Trib 6	na	Depression	in drainage	non-jurisdictional
WB-139	T34NR73 W26	126	0.003	Sage Creek Trib 6	na	Depression	in drainage	non-jurisdictional
WB-140	T34NR73 W26	150	0.003	Sage Creek Trib 6	na	Depression	in drainage	non-jurisdictional
WB-141	T34NR73 W26	227	0.005	Sage Creek Trib 6	na	Depression	in drainage	non-jurisdictional
WB-142	T34NR73 W26	132	0.003	Sage Creek Trib 6	na	Depression	in drainage	non-jurisdictional
WB-143	T34NR73 W26	208	0.005	Sage Creek Trib 6	na	Depression	in drainage	non-jurisdictional
WB-144	T34NR73 W26	409	0.009	Sage Creek Trib 6	na	Depression	in drainage	non-jurisdictional

LUDEMAN PROJECT WETLAND SUMMARY								
WETLAND	Township Range Section	AREA (Sq Ft)	AREA (Acres)	Drainage	Wetland <sup>1</sup> Classification	Geomorphic Setting	Comments	Jurisdictional <sup>2</sup> Recommendation
WB-145	T34NR73 W26	308	0.007	Sage Creek Trib 6	na	Depression	in drainage	non-jurisdictional
WB-146	T34NR73 W26	531	0.012	Sage Creek Trib 6	na	Depression	in drainage	non-jurisdictional
WB-147	T34NR73 W26	368	0.008	Sage Creek Trib 6	na	Depression	in drainage	non-jurisdictional
WB-148	T34NR73 W26	97	0.002	Sage Creek Trib 6	na	Depression	in drainage	non-jurisdictional
WB-149	T34NR73 W26	168	0.004	Sage Creek Trib 6	na	Depression	in drainage	non-jurisdictional
WB-150	T34NR73 W26	99	0.002	Sage Creek Trib 6	na	Depression	in drainage	non-jurisdictional
WB-151	T34NR73 W26	204	0.005	Sage Creek Trib 6	na	Depression	in drainage	non-jurisdictional
WB-152	T34NR73 W26	104	0.002	Sage Creek Trib 6	na	Depression	in drainage	non-jurisdictional
WB-153	T34NR73 W26	94	0.002	Sage Creek Trib 6	na	Depression	in drainage	non-jurisdictional
WB-154	T34NR73 W26	60	0.001	Sage Creek Trib 6	na	Depression	in drainage	non-jurisdictional
WB-155	T34NR73 W26	189	0.004	Sage Creek Trib 6	na	Depression	in drainage	non-jurisdictional
WB-156	T34NR73 W26	63	0.001	Sage Creek Trib 6	na	Depression	in drainage	non-jurisdictional

LUDEMAN PROJECT WETLAND SUMMARY								
WETLAND	Township Range Section	AREA (Sq Ft)	AREA (Acres)	Drainage	Wetland <sup>1</sup> Classification	Geomorphic Setting	Comments	Jurisdictional <sup>2</sup> Recommendation
WB-157	T34NR73 W26	50	0.001	Sage Creek Trib 6	na	Depression	in drainage	non-jurisdictional
WB-158	T34NR73 W26	128	0.003	Sage Creek Trib 6	na	Depression	in drainage	non-jurisdictional
WB-159	T34NR73 W26	186	0.004	Sage Creek Trib 6	na	Depression	in drainage	non-jurisdictional
WB-160	T34NR73 W26	738	0.017	Sage Creek Trib 6	na	Depression	in drainage	non-jurisdictional
WB-161	T34NR73 W26	81	0.002	Sage Creek Trib 6	na	Depression	in drainage	non-jurisdictional
WB-162	T34NR73 W26	86	0.002	Sage Creek Trib 6	na	Depression	in drainage	non-jurisdictional
WB-163	T34NR73 W26	255	0.006	Sage Creek Trib 6	na	Depression	in drainage	non-jurisdictional
WB-164	T34NR73 W26	209	0.005	Sage Creek Trib 6	na	Depression	in drainage	non-jurisdictional
WB-165	T34NR73 W26	55	0.001	Sage Creek Trib 6	na	Depression	in drainage	non-jurisdictional
WB-166	T34NR73 W26	161	0.004	Sage Creek Trib 6	na	Depression	in drainage	non-jurisdictional
WB-167	T34NR73 W26	242	0.006	Sage Creek Trib 6	na	Depression	in drainage	non-jurisdictional
WB-168	T34NR73 W26	100	0.002	Sage Creek Trib 6	na	Depression	in drainage	non-jurisdictional

LUDEMAN PROJECT WETLAND SUMMARY								
WETLAND	Township Range Section	AREA (Sq Ft)	AREA (Acres)	Drainage	Wetland <sup>1</sup> Classification	Geomorphic Setting	Comments	Jurisdictional <sup>2</sup> Recommendation
WB-169	T34NR73 W26	259	0.006	Sage Creek Trib 6	na	Depression	in drainage	non-jurisdictional
WB-170	T34NR73 W26	315	0.007	Sage Creek Trib 6	na	Depression	in drainage	non-jurisdictional
WB-171	T34NR73 W26	117	0.003	Sage Creek Trib 6	na	Depression	in drainage	non-jurisdictional
WB-172	T34NR73 W26	482	0.011	Sage Creek Trib 6	na	Depression	in drainage	non-jurisdictional
WB-173	T34NR73 W26	105	0.002	Sage Creek Trib 6	na	Depression	in drainage	non-jurisdictional
WB-174	T34NR73 W26	376	0.009	Sage Creek Trib 6	na	Depression	in drainage	non-jurisdictional
WB-175	T34NR73 W26	58	0.001	Sage Creek Trib 6	na	Depression	in drainage	non-jurisdictional
WB-176	T34NR73 W26	55	0.001	Sage Creek Trib 6	na	Depression	in drainage	non-jurisdictional
WB-177	T34NR73 W26	81	0.002	Sage Creek Trib 6	na	Depression	in drainage	non-jurisdictional
WB-178	T34NR73 W26	59	0.001	Sage Creek Trib 6	na	Depression	in drainage	non-jurisdictional
WB-179	T34NR73 W26	119	0.003	Sage Creek Trib 6	na	Depression	in drainage	non-jurisdictional
WB-180	T34NR73 W26	30	0.001	Sage Creek Trib 6	na	Depression	in drainage	non-jurisdictional

LUDEMAN PROJECT WETLAND SUMMARY								
WETLAND	Township Range Section	AREA (Sq Ft)	AREA (Acres)	Drainage	Wetland <sup>1</sup> Classification	Geomorphic Setting	Comments	Jurisdictional <sup>2</sup> Recommendation
WB-181	T34NR73 W26	36	0.001	Sage Creek Trib 6	na	Depression	in drainage	non-jurisdictional
WB-182	T34NR73 W26	39	0.001	Sage Creek Trib 6	na	Depression	in drainage	non-jurisdictional
WB-183	T34NR73 W23	34	0.001	Sage Creek Trib 6	na	Depression	in drainage	non-jurisdictional
WB-184	T34NR73 W23	357	0.008	Sage Creek Trib 6	na	Depression	in drainage	non-jurisdictional
WB-185	T34NR73 W23	217	0.005	Sage Creek Trib 6	na	Depression	in drainage	non-jurisdictional
WB-186	T34NR73 W23	363	0.008	Sage Creek Trib 6	na	Depression	in drainage	non-jurisdictional
WB-187	T34NR73 W23	331	0.008	Sage Creek Trib 6	na	Depression	in drainage	non-jurisdictional
WB-188	T34NR73 W23	71	0.002	Sage Creek Trib 6	na	Depression	in drainage	non-jurisdictional
WB-189	T34NR73 W23	510	0.012	Sage Creek Trib 6	na	Depression	in drainage	non-jurisdictional
WB-190	T34NR73 W23	391	0.009	Sage Creek Trib 6	na	Depression	in drainage	non-jurisdictional
WL-41a	T34NR72 W19	1,732	0.040	Sage Creek Trib 7	PEMA	Depression	in drainage	non-jurisdictional
WL-41b	T34NR72 W19	126	0.003	Sage Creek Trib 7	PEMA	Depression	in drainage	non-jurisdictional



LUDEMAN PROJECT WETLAND SUMMARY								
WETLAND	Township Range Section	AREA (Sq Ft)	AREA (Acres)	Drainage	Wetland <sup>1</sup> Classification	Geomorphic Setting	Comments	Jurisdictional <sup>2</sup> Recommendation
WL-41c	T34NR72 W19	39	0.001	Sage Creek Trib 7	PEMA	Depression	in drainage	non-jurisdictional
WL-41d	T34NR72 W19	131	0.003	Sage Creek Trib 7	PEMA	Depression	in drainage	non-jurisdictional
WL-41e	T34NR72 W19	561	0.013	Sage Creek Trib 7	PEMA	Depression	in drainage	non-jurisdictional
WL-41f	T34NR72 W30	697,433	16.011	Sage Creek Trib 7	PEMC/PUBF	Diked drainage	Gilbert Lake	non-jurisdictional
WL-42	T34NR72 W19	20,412	0.469	Sage Creek Trib 7	PEMA	Depression	Isolated	non-jurisdictional
WB-192	T34NR72 W19	46	0.001	Sage Creek Trib 7	na	Depression	in drainage	non-jurisdictional
WB-193	T34NR72 W19	256	0.006	Sage Creek Trib 7	na	Depression	in drainage	non-jurisdictional
WB-194	T34NR72 W19	58	0.001	Sage Creek Trib 7	na	Depression	in drainage	non-jurisdictional
WB-195	T34NR72 W19	1,506	0.035	Sage Creek Trib 7	na	Depression	in drainage	non-jurisdictional

1. Classification of wetlands and deep water habitats of the U.S., Cowardin.
2. Jurisdictional status to be determined/verified by the USACE.

**ADDENDUM 2.8-H**  
**WETLAND SPECIES LIST**

Scientific Name	Common Name	Indicator Status
<i>Agropyron repens</i>	quackgrass	FAC
<i>Agropyron smithii</i>	western wheatgrass	FACU
<i>Agropyron spicatum</i>	blue-bunch wheatgrass	FACU-
<i>Agrostis alba</i>	redtop	FACW
<i>Alopecurus pratensis</i>	meadow foxtail	FACW
<i>Ambrosia tomentosa</i>	skeletonleaf bursage	NL
<i>Bromus briziformis</i>	rattlesnake brome	NL
<i>Bromus inermis</i>	smooth brome	NL
<i>Calamagrostis neglecta</i>	slimstem reedgrass	OBL
<i>Carex aquatilis</i>	water sedge	OBL
<i>Carex lanuginosa</i>	wooly sedge	OBL
<i>Carex nebrascensis</i>	Nebraska sedge	OBL
<i>Carex praegracilis</i>	clustered field sedge	FACW
<i>Cirsium arvense</i>	creeping thistle	FACU
<i>Distichlis stricta</i>	inland saltgrass	NL
<i>Eleocharis palustris</i>	creeping spikerush	OBL
<i>Equisetum arvense</i>	field horsetail	FAC
<i>Equisetum laevigatum</i>	smooth scouring rush	FAC
<i>Grindelia squarrosa</i>	curly-cup gumweed	UPL
<i>Hordeum jubatum</i>	foxtail Barley	FACW
<i>Juncus balticus</i>	baltic rush	OBL
<i>Juncus effusus</i>	common rush	OBL
<i>Juncus torreyi</i>	Torrey's rush	FACW
<i>Lappula redowskii</i>	flatspine stickseed	NL
<i>Melilotus sp.</i>	sweet clover	FACU-
<i>Mentha arvensis</i>	field mint	FACW
<i>Muhlenbergia asperifolia</i>	alkali muhly	FACW
<i>Plantago maritima</i>	alakali plantain	NL
<i>Poa compressa</i>	Canada bluegrass	FACU
<i>Poa spp.</i>		
<i>Polypogon monspeliensis</i>	rabbitfoot grass	OBL
<i>Potentilla anserina</i>	silverweed	OBL
<i>Ranunculus cymbalaria</i>	shore buttercup	OBL
<i>Rosa woodsii</i>	woods rose	FACU

Scientific Name	Common Name	Indicator Status
<i>Rotala ramosior</i>	toothcup	NI
<i>Rumex stenophyllus</i>	narrow-leaf dock	FACW+
<i>Scirpus americanus</i>	three-square bulrush	OBL
<i>Scirpus validus</i>	soft-stem bulrush	OBL
<i>Spartina gracillis</i>	alkali cordgrass	FACW
<i>Sporobolis airoides</i>	alkali sacaton	FAC
<i>Taraxacum officinale</i>	common dandelion	FACU
<i>Thermopsis montana</i>	mountain goldenbanner	NL
<i>Triglochin concinnum</i>	Utah arrow-grass	OBL
<i>Typha angustifolia</i>	narrow-leaf cattail	OBL

**ADDENDUM 2.8-I**  
**WETLAND PHOTOGRAPHS**

Little Sand Creek Drainage Area



**Photo 1: WL-1a, Little Sand Creek. Looking northeast. Emergent wetland with creeping spike rush.**



**Photo 2: WL-1m, Little Sand Creek. Looking southwest. Emergent wetland.**





**Photo 3: WL-10, Little Sand Creek. Emergent wetland, Looking southwest towards Section 15.**



**Photo 4: WL-3a, Little Sand Creek. Emergent wetland. Looking northeast.**





**Photo 5: WL-3b. Little Sand Creek. Emergent wetland. Looking west.**



**Photo 6: WL-3c. Little Sand Creek. Emergent wetland. Looking southeast.**





**Photo 7: WB-1. Diked tributary to Little Sand Creek. Looking southeast.**



**Photo 8: WB-2. Isolated waterbody. Looking northeast, WB-1 in background.**





**Photo 9: WB-3. Diked tributary to Little Sand Creek. Looking northwest.**



**Photo 10: WB-5. Discontinuous depression in tributary to Little Sand Creek.  
Looking south.**





**Photo 11: WB-7. Diked waterbody within Little Sand Creek. Looking south.**



**Photo 12: WB-10. Discontinuous depression in tributary to Little Sand Creek.  
Looking east.**





**Photo 13: WB-14. Discontinuous depression in tributary to Little Sand Creek.  
Looking north.**



**Photo 14: WB-16. Diked drainage in tributary to Little Sand Creek. Looking  
southeast.**



Running Dutchman Ditch Drainage Area



**Photo 15: WL-4. Emergent wetland in depression in drainage on back side of dike.  
Tributary to Running Dutchman Ditch. Looking northwest.**





**Photo 16: WL-5. Isolated emergent wetland in depression within Running Dutchman Ditch drainage area. Looking southeast.**



**Photo 17: WL-6. Emergent wetland in diked drainage within Running Dutchman Ditch tributary. Looking east.**





**Photo 18: WB-17. Isolated depression at windmill in Running Dutchman Ditch drainage area. Looking northwest.**



**Photo 19: WB-18. Diked tributary to Running Dutchman Ditch. Looking southeast.**





**Photo 20: WB-19. Diked tributary to Running Dutchman Ditch. Looking east.**



**Photo 21: WB-20. Tributary to Running Dutchman Ditch at County Road. Looking southeast.**





**Photo 22: WB-21. Diked tributary to Running Dutchman Ditch. Looking southwest.**





**Photo 23: WB-43. Diked tributary to Running Dutchman Ditch. Looking west.**



**Photo 24: WB-44. Depression in drainage in tributary to Running Dutchman Ditch. Looking north.**





**Photo 25: WB-45. Depression in drainage in tributary to Running Dutchman Ditch.  
Looking north.**



**Photo 26: WB-48. Depression in drainage in tributary to Running Dutchman Ditch.  
Looking northeast.**





**Photo 27: WB-50. Depression in drainage in tributary to Running Dutchman Ditch.  
Looking east.**



**Photo 28: WB-52. Depression in drainage in tributary to Running Dutchman Ditch.  
Looking northwest.**





**Photo 29: WB-54. Depression in drainage in tributary to Running Dutchman Ditch.  
Looking northwest.**



**Photo 30: WB-56. Depression in drainage in tributary to Running Dutchman Ditch.  
Looking north.**





**Photo 31: WB-58. Depression in drainage in tributary to Running Dutchman Ditch. Looking north.**



**Photo 32: WB-61. Diked tributary to Running Dutchman Ditch. Looking northwest.**



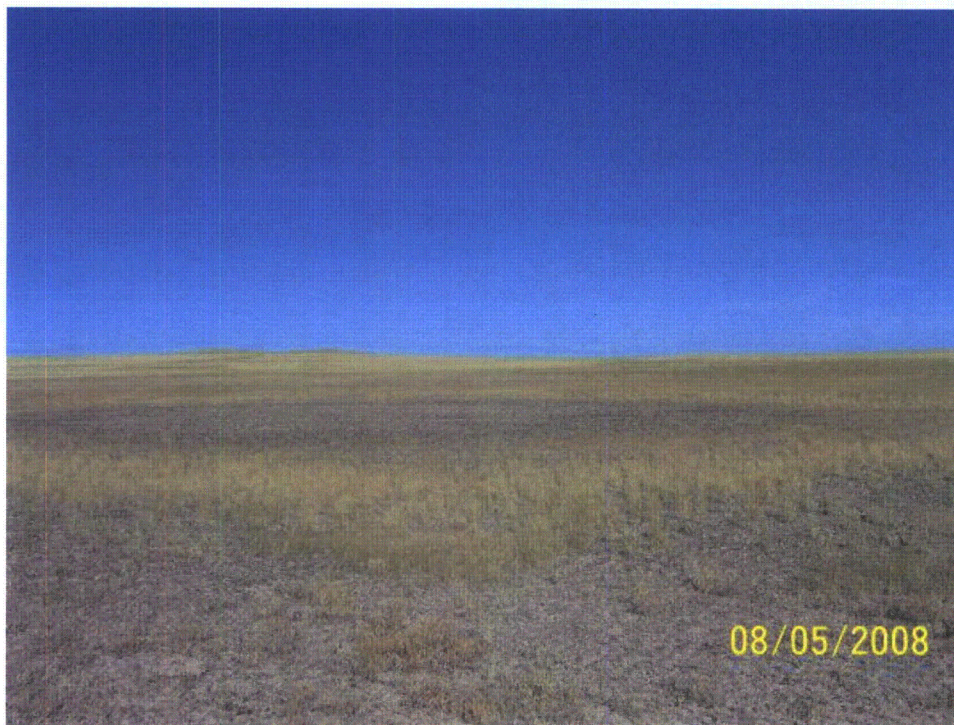


**Photo 33: WB-62. Diked tributary to Running Dutchman Ditch. Looking south.**



**Photo 34: WB-63. Diked tributary to Running Dutchman Ditch. Looking southwest.**





**Photo 35: WB-64. Isolated depression (water body) within Running Dutchman Ditch drainage area.**



**Photo 36: WB-65. Diked tributary to Running Dutchman Ditch. Looking southeast.**





**Photo 37: WB-66. Diked tributary to Running Dutchman Ditch. Looking west.**



Sage Creek Drainage Area



**Photo 38: WL-7. Isolated wetland in depression within Sage Creek Tributary 1 drainage area. PEMC with PUBF area. Looking south.**



**Photo 39: WL-8. Isolated emergent wetland within depression in Sage Creek Tributary 1 drainage area. Looking northwest.**