

REGULATORY INFORMATION DISTRIBUTION SYSTEM (RIDS)

ACCESSION NBR:7912070431 DOC.DATE: 79/11/30 NOTARIZED: NO DOCKET #
 FACIL:50-263 Monticello Nuclear Generating Plant, Northern States 05000263
 AUTH.NAME AUTHOR AFFILIATION
 MAYER,L.O. Northern States Power Co.
 RECIP.NAME RECIPIENT AFFILIATION
 Office of Nuclear Reactor Regulation

SUBJECT: Discusses fire barrier installation required by fire protection safety evaluation. Three-hour fire barriers proposed for load ctrs. Bechtel details for addl mods encl.

DISTRIBUTION CODE: A032S COPIES RECEIVED: LTR 1 ENCL 1 SIZE: 4
 TITLE: Fire Protec Info OL (Ltd # CYS)

NOTES: _____

	RECIPIENT ID CODE/NAME	COPIES LTTR ENCL	RECIPIENT ID CODE/NAME	COPIES LTTR ENCL
ACTION:	04 PM T. KEVERN	1 1	BC ORB #3	4 0
INTERNAL:	01 REG FILE	1 1	02 NRC PDR	1 1
	05 I&E	1 1	06 PLANT SYS BR	5 5
	AUXIL SYS BR	1 0	MURANAKA, R.	1 0
	OELD	1 0	TA/EDO	1 0
	WAMBACH	1 0		
EXTERNAL:	03 LPDR	1 1	ACRS	16 0
	NSIC	1 0		

DEC 10 1979

ccp

TOTAL NUMBER OF COPIES REQUIRED: LTTR 36 ENCL 10



NORTHERN STATES POWER COMPANY

MINNEAPOLIS, MINNESOTA 55401

November 30, 1979

Director
Office of Nuclear Reactor Regulation
U S Nuclear Regulatory Commission
Washington, DC 20555

MONTICELLO NUCLEAR GENERATING PLANT
Docket No. 50-263 License No. DPR-22

Fire Barrier Evaluation Required by Fire Protection
Safety Evaluation

Sections 3.2.2(2) and 5.6.6 of the Monticello Fire Protection Safety Evaluation Report issued by the NRC Staff on August 29, 1979 contain our commitment to evaluate the potential for a single fire to damage redundant safe shutdown equipment in Load Center No. 1 and Load Center No. 2. The purpose of this letter is to describe the results of this evaluation.

During previous discussions with the NRC Staff concerning fire hazards in the area of Load Center No. 1 and Load Center No. 2, we proposed to install a three-hour fire barrier between the Hydrogen Seal Oil Unit and Load Center No. 1 on the 911' elevation. A three hour fire barrier was also proposed for the 931' elevation between Load Center No. 2 and the Valve Operating Gallery. After the installation of these barriers, the only remaining concern is the possibility of a fire which originates in one of the load centers damaging the redundant load center.

Evaluation of this item by Bechtel Corporation determined that the only additional modification required is the installation of a barrier in the 18" wide by 24' long floor opening on the 931' elevation which provides a path of communication between redundant load centers. Fire loading in the two load center zones does not indicate the need for a three-hour barrier between the two zones. A metal stud and gypsum board closure, similar to UL Design U-303, that will provide a two hour barrier is presently planned for use in this area. A 1 1/2-hour rated fire damper will be provided in the air duct passing through this opening. Details are shown on the attached drawings FB-1 and FB-2. No additional modifications are required.

A032

S
1/1

43

7912070

NORTHERN STATES POWER COMPANY

November 30, 1979

Page -2-

Please contact us if you require additional information related to this modification. To permit us to complete the work on schedule, we request that NRC Staff comments related to the proposed design be conveyed to us by March 1, 1980.

Sincerely,

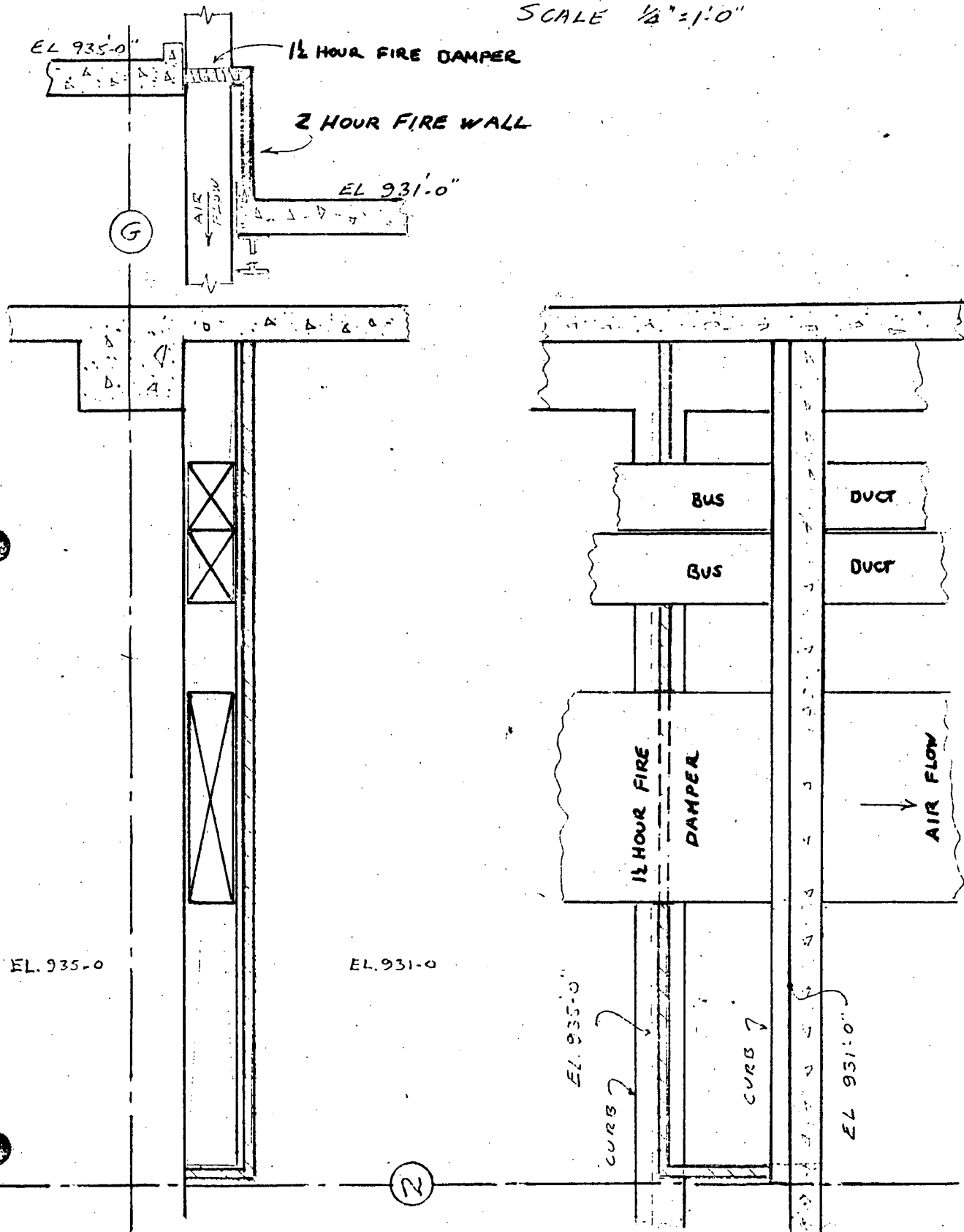
A handwritten signature in cursive script, appearing to read "L.O. Mayer".

L O Mayer, PE
Manager of Nuclear Support Services

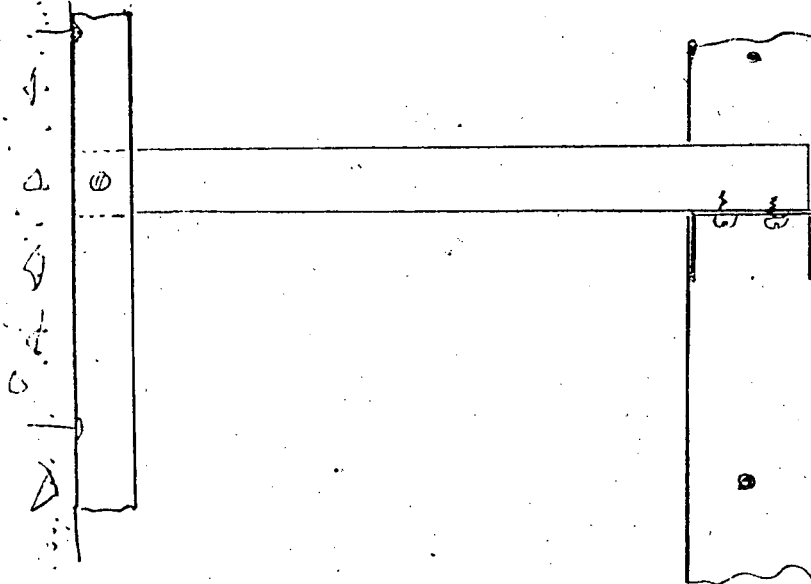
LOM/DMM/jh

Attachment

SCALE 1/8"=1'-0"



SCALE 3"=1'-0"



EL 935'-0"

