

## **9.4 Air Conditioning, Heating, Cooling and Ventilating Systems**

The information in this section of the reference ABWR DCD, including all subsections, tables, and figures is incorporated by reference with the following departures and supplements.

STD DEP T1 2.14-1 (Table 9.4.4e, Figure 9.4-3)

STP DEP T1 5.0-1

STD DEP T1 2.15-2

STP DEP 9.4-1

STD DEP 9.4-2 (Figure 9.4-1, Sheets 1 through 5)

STD DEP 9.4-3

STD DEP 9.4-4 (Tables 9.4-3, 9.4-5, 9.4-5a, 9.4-5b, 9.4-5c, and 9.4-5d), (Figures 9.4-2a, 9.4-2b Sheet 2, and 9.4-2c)

STD DEP 9.4-5 (Figure 9.4-10, Sheets 1, 2, and 3)

STD DEP 9.4-6 (Figure 9.4-1, Sheets 1 and 2)

STD DEP 9.2-7 (Table 9.4-1)

STD DEP 9.2-9 (Table 9.4-1)

STD DEP 9.4-7 (Table 9.4-4i, Figure 9.4-3 Sheet 2)

STP DEP 9.4-8 (Table 9.4-4f, Figure 9.4-1 Sheets 1 through 5, Figure 9.4-3 Sheet 1, Figure 9.4-4 Sheets 1 through 3)

STD DEP 9.4-9 (Table 9.4-5c), (Figures 9.4-2a, 9.4-2b, Sheet 1 & Sheet 2)

### **9.4.1 Control Building HVAC**

#### **9.4.1.1.4 Safety Evaluation**

STD DEP 9.4-2

*Upon detection of smoke in the CRHA, the operating division of the HVAC System is put into smoke removal mode by the main control room operators. For smoke removal, both exhaust fans are started at high speed in conjunction with a supply fan, ~~the~~ The recirculation damper is closed and the damper in the bypass duct around the ACU is opened. Either division of the CRHA HVAC System can be used as a smoke removal system.*

#### **9.4.1.1.6 Instrumentation Application**

STD DEP 9.4-6

Differential pressure indicators show the pressure drop across the prefilters and the HEPA filters. The switch causes an alarm to be actuated if the pressure drop exceeds a preset limit.

One A flow switch located at each fan discharge duct in the emergency filtration system unit fan discharge duct automatically starts the standby system fan in the same division and initiates an alarm on low flow or operating fan failure. On detection of low flow by both flow switches in an emergency filtration unit, the emergency filtration unit fan, and the air conditioning unit in the redundant division are started and alarm is initiated.

#### **9.4.1.2.3.3 Safety-Related Subsystem Division C**

STD DEP 9.4-7

*Subsystem Division 3 specifically serves:*

- (1) Safety-related battery Division III
- (2) HECW chiller Division C
- (3) RCW water pump and heat exchanger Division C
- (4) HVAC equipment Division C
- (5) Safety-related electrical equipment Division III
- (6) ~~Non safety related MG sets~~

#### **9.4.1.2.6 Instrumentation Application**

STD DEP 9.4-2

*On a smoke alarm in a division of the Control Building safety-related electrical equipment area HVAC System, that division of the HVAC System shall be put into smoke removal mode. No other division is affected by this action. For smoke removal, the recirculation duct damper is closed, the damper in the bypass duct around the ACU is opened, and both exhaust fans are started in conjunction with a supply fan. Normal once through ventilation of the battery rooms also removes smoke from the battery rooms.*

#### **9.4.4 Turbine Island HVAC System**

STD DEP 9.4-4

*The Turbine Island heating, ventilating, and air conditioning system consists of the Turbine Building (T/B) HVAC System and the Turbine Building Electrical Building (E/B) Equipment Areas (EEA) HVAC System.*

**9.4.4.1 Design Bases****9.4.4.1.1 Safety Design Bases**

STD DEP 9.4-4

*The T/B HVAC and ~~E/B~~ EEA HVAC Systems do not serve or support any safety function and have no safety design bases.*

**9.4.4.1.2 Power Generation Design Bases**

STD DEP 9.4-4

STD DEP 9.4-9

- (1) *The T/B HVAC and ~~E/B~~ EEA HVAC are designed to supply filtered and tempered air to all Turbine Island spaces during all modes of normal plant operation, including plant startup and shutdown. The systems are also designed to maintain inside air temperatures above ~~45°C~~ 10°C (except OG Holdup Room: 23°C) and below the following upper design limits:*

*General Turbine Building areas: 40°C*

*Condenser compartment: 43°C*

*Resin tank room: 43°C*

*Steam tunnel: ~~49~~ 60°C*

*Moisture separator compartments: ~~49~~ 60°C*

*OG Holdup Room: 31°C*

*Electrical ~~Building~~ Equipment areas: 40°C*

- (2) *The ~~E/B~~ EEA HVAC is designed to provide independent supply and exhaust ventilation to the electrical ~~switchgear~~ rooms, combustion turbine generator and electric boiler rooms, chillers and air compressor rooms, and independent exhaust for the combustion turbine generator and auxiliary electric boiler rooms. The ventilation exhaust for these areas is discharged directly to the atmosphere. Recirculation from clean areas is provided.*
- (3) *The T/B HVAC is designed to direct airflow from areas of low potential radioactivity to areas of high potential radioactivity. ~~The T/B HVAC design is based on supplying air from the Turbine Building periphery (outer walls) both above and below the operating floor and ventilating areas radially inwards towards the return/exhaust air inlet points located below the operating floor in equipment rooms, the condenser area and under the building roof. The main~~*

stairwells that are designed for personnel evacuation routes are pressurized to prevent infiltration of smoke from other Turbine Building areas, during a fire.

- (6) Exhaust air from other (low potential airborne concentrations) Turbine Building areas and component vents, except lube oil areas, is ~~either exhausted to the atmosphere through a medium efficiency filter, or is returned to the supply air unit and mixed with outside air.~~

#### **9.4.4.2.1 T/B HVAC General Description**

STD DEP 9.4-4

STD DEP 9.4-9

The T/B HVAC airflow diagram is shown on Figure 9.4-2a; the system instruments and controls are illustrated on Figure 9.4-2b; T/B Ventilation System flow rate and equipment design parameters are listed in Table Tables 9.4.3 and 9.4-5, respectively.

The Turbine Building supply air units, main exhaust fans, equipment compartment exhaust fans, filters, and control panels are located in the T/B HVAC equipment rooms at elevation 27,800mm/ 38,300mm/ 47,200~~30,300mm, and the floor above.~~ The lube oil area exhaust fans are located in the vicinity of lube oil reservoir room. Individual unit coolers and unit heaters are located in the areas that they serve.

Potentially high radioactive concentration exhaust air is filtered and discharged to the atmosphere. Exhaust air from clean and low potential airborne contamination areas is ~~either discharged to the atmosphere or recirculated.~~

##### **9.4.4.2.1.1 Turbine Building Supply (TBS) System**

STD DEP 9.4-9

The TBS System consists of (1) outside air intake louvers, (2) return and exhaust air modulating dampers with minimum outside air damper position, (3) low and high efficiency filters, (4) ~~hot water~~electric heating coils, (5) chilled water cooling coils, and (6) three 50% capacity supply fans.

Two out of three fans are normally operated to supply filtered and, if required, temperature adjusted air to all levels of the Turbine Building. The third fan is a standby unit, which starts automatically upon failure of either operating fan. Each supply fan is provided with pneumatically-operated inlet vanes, which maintain a constant airflow rate and pneumatically-operated isolation shutoff dampers.

The TBS System runs with 100% outside air during normal plant operation.~~whenever outside air temperature is moderate enough to contribute to maintaining suitable inside air conditions at the minimum operating cost. The T/B HVAC modulates the return, exhaust and outside air dampers to maximize inside air temperature control by outside air, and minimize the energy used for either cooling by the Chilled Water System or heating by the House Boiler System.~~

~~On extreme outside air temperature conditions (either high or low), the outside air intake dampers are at their minimum position. Maximum inside air, as available from the building clean and low potential airborne contamination areas only, is recirculated by the T/B HVAC exhaust/return fans to the supply air inlet plenum.~~

The TBS fans are started by handswitches located on local control panels. The supply fans are interlocked with the T/B HVAC exhaust fans and T/B HVAC compartment exhaust fans to ensure that the exhaust fans are running before a supply fan is started.

The TBS air heating and cooling coil performance is controlled by temperature controllers stepping electric power and modulating ~~hot water and~~ chilled water flow control valves at the coil.

The TBS fans are started by handswitches located on a local control panel.

#### **9.4.4.2.1.2 Turbine Building Exhaust (TBE) System**

STD DEP 9.4-9

The air drawn by TBE fans from the building clean and low potentially contaminated areas is filtered through medium efficiency particulate filters (bag type) and ~~either exhausted through the monitored plant stacker returned to the T/B HVAC supply plenum and mixed with outside air.~~

#### **9.4.4.2.1.3 Turbine Building Equipment Compartment Exhaust (TBCE) System**

The TBCE System consists of two 100% capacity exhaust fans, one common medium efficiency particulate filter (bag type) unit and associated controls. One fan is normally in operation, and the other fan is on automatic standby. The system also includes a 100% capacity filter bypass duct for purging smoke in case of fire.

Except when smoke removal is required, air is exhausted from the potentially high airborne concentration compartments and equipment vents, filtered through a medium efficiency particulate filter (bag type) before it is released to the atmosphere through the plant stack.

#### **9.4.4.2.1.5 T/B HVAC Unit Coolers and Electric Unit Heaters**

STD DEP 9.4-4

Local unit coolers and electric unit heaters are provided as required in the ~~following areas: condenser compartment level 2 and 3, condensate pump room, heater drain/pump rooms, filter valve room, demineralizer pump and valve room, TCW heat exchanger area, condensate control station, reactor feed pump power supply room, demineralizer room and filter maintenance area, TCW pump area, SJA-E and recombiner rooms, upper level above the turbine operating floor. high heat load areas.~~

**9.4.4.2.2 ~~E/B~~ EEA HVAC General Description**

STD DEP 9.4-4

The ~~E/B~~ EEA HVAC schematic diagram is shown on Figure 9.4-2c.

**9.4.4.2.2.1 Electrical ~~Building~~ Equipment Areas HVAC System**

STD DEP 9.4-4

STD DEP 9.4-9

The Electrical ~~Building~~ Equipment area HVAC System is provided with two 100% capacity air supply fans and two 100% capacity exhaust fans.

The air supply fan draws outside air through louvers, control dampers, low efficiency filters, electrical heating coils, and chilled water coils, and discharges air directly into the ~~switchgear~~ electrical rooms, chiller, combustion turbine generator, ~~house~~ electric boiler room and air compressor rooms. Return air ~~Ductwork~~ ductwork and ~~bypass dampers are~~ is provided to allow recirculation of air from the ~~switchgear~~ electrical rooms and ~~chiller rooms~~ air compressor room.

The ~~E/B~~ EEA HVAC system maintains the Electrical ~~Building~~ Equipment Areas at a positive pressure with respect to atmosphere.

**9.4.4.2.2.2 ~~E/B~~ EEA HVAC Unit Coolers and Electric Unit Heaters**

STD DEP 9.4-4

Local unit coolers and/or electric unit heaters are provided as required in the ~~chiller, air compressor and combustion turbine generator room~~ high heat load areas. The unit coolers are supplied with chilled water from the Chilled Water System.

**9.4.4.3 Evaluation**

STD DEP 9.4-4

The TBS and ~~E/B~~ EEA HVAC have no safety design bases and serve no safety function.

Evaluation of the T/B HVAC and ~~E/B~~ EEA HVAC with respect to fire protection is discussed in Subsection 9.5.1.

**9.4.4.5 Instrumentation Application**

STD DEP 9.4-4

All control actuations, indicators, and alarms for normal plant operation are located in local control panels in the T/B HVAC and ~~E/B~~ EEA HVAC equipment areas.

Controls and instrumentation for the T/B HVAC and ~~E/B~~ EEA HVAC include:

**9.4.5 Reactor Building HVAC System**

STD DEP T1 2.14-1

STD DEP T1 2.15-2

**9.4.5.1.1.2 Power Generation Design Bases**

STP DEP 9.4-8

*The Secondary Containment HVAC System is designed to provide an environment with controlled temperature and airflow patterns to insure both the comfort and safety of plant personnel and the integrity of equipment and components.*

*A negative pressure of 6.4mm water gauge is normally maintained in the secondary containment relative to the outside atmosphere.*

*The system design is based on outdoor summer conditions of ~~46~~32.8°C and outdoor winter conditions of ~~-40~~-2.1°C.*

**9.4.5.2 R/B Safety-Related Equipment HVAC System****9.4.5.2.2 System Description**

*The R/B Safety-Related Equipment HVAC System consists of 12 safety-related fan coil units (FCU) of division A, B, or C. Each FCU has the responsibility to cool one safety-related equipment room in the secondary containment. The safety-related equipment HVAC (fan coil units) system P&ID is shown in Figure 9.4-3. Space temperatures are maintained less than 40°C normally and less than 66°C during pump operation:*

- (1) RHR(A) pump room
- (2) RHR(B) pump room
- (3) RHR(C) pump room
- (4) HPCF(B) pump room
- (5) HPCF(C) pump room
- (6) RCIC pump room
- (7) ~~FGS (B) room~~-Not Used
- (8) ~~FGS (C) room~~-Not Used
- (9) SGTS(B) room
- (10) SGTS(C) room
- (11) CAMS(A) room

(12) CAMS(B) room

#### **9.4.5.2.2.2 Not Used**

~~Cooling of the FCS rooms are automatically initiated upon receipt of a secondary containment isolation signal or a manual FCS start signal.~~

~~These rooms are cooled by the Secondary Containment HVAC System during normal conditions. The units are open ended and recirculate cooling air within the space served. Space heat is removed by cooling water passing through the coil section. Divisional RCW is used as the cooling medium. The units are fed from the same divisional power as that for the FCS being served. Humidity is not specifically maintained at a set range, but is automatically determined by the surface temperature of the cooling coil. Drain pan discharge (condensate) is routed to a floor drain located within the room.~~

#### **9.4.5.4.1.2 Power Generation Design Bases**

STD DEP T1 2.15-2

The system design is based on outdoor summer conditions of 46.1°C and outdoor winter conditions of -40°C. The indoor design temperature in the safety-related electrical equipment areas is 40°C maximum in the summer and a minimum of 10°C in the winter except ~~50~~60°C in the diesel generator (DG) engine rooms during DG operation. The system along with the DG supply fan maintain DG room temperature below ~~50~~60°C.

#### **9.4.5.5.2 System Description**

STP DEP 9.4-8

The R/B Safety-Related Diesel Generated HVAC System for each of three diesel generator divisions consists of a filter and two supply fans and associated ductwork. They both take air from the outside through a tornado damper ~~and a fire damper~~ and distribute it to the diesel generator room. The exhaust air is forced out the exhaust louvers and a tornado damper.

#### **9.4.5.5.5 Instrumentation Application**

STD DEP T1 2.15-2

The safety-related D/G HVAC System together with R/B Safety-related Electrical Equipment HVAC System maintain DG engine room temperature below ~~50~~60°C.

#### **9.4.6 Radwaste Building HVAC Systems**

STD DEP 9.4-5

STP DEP T1 5.0-1



**9.4.6.1 Design Bases****9.4.6.1.2 Power Generation Design Bases**

STD DEP 9.4-5

*The Radwaste Building HVAC System is designed to provide an environment with controlled temperature and airflow patterns to insure both the comfort and safety of plant personnel and the integrity of equipment and components. The Radwaste Building is divided into ~~two~~ three zones for air conditioning and ventilation purposes. These zones are the clean radwaste control room; the clean electrical equipment room, HVAC equipment room, air filtration equipment room, elevator machine room, and Radwaste Building entrance; and the balance of the Radwaste Building which has the potential for airborne radioactive contamination.*

*A positive static pressure with respect to the balance of the building and to the atmosphere is maintained in the radwaste control room, the electrical equipment room, HVAC equipment room, air filtration equipment room, elevator machine room, and Radwaste Building entrance. The balance of the Radwaste Building is maintained at a negative static pressure with respect to the atmosphere and adjacent clean areas.*

STP DEP T1 5.0-1

*The system design is based on ~~an outdoor summer maximum of 46°C. Summer indoor temperatures include 24°C in the radwaste control room, 32°C in operating areas and corridors, a maximum temperature of 40°C in areas that may be occupied and 43°C in the equipment cells. Winter indoor design temperatures include 16°C in occupied areas, 21°C in the radwaste control room and 16°C in the equipment cells, based on an outdoor design temperature of 40°C.~~ the following 1% exceedance site temperatures:*

- Summer design conditions, 32.8°C. (91°F) dry bulb and 26.3°C. (79.3°F) wet bulb (coincident).
- Winter design condition, 2.1°C. (35.8°F).

STD DEP 9.4-5

The system is designed to:

- Maintain indoor design condition of 24°C (75°F) and RH 55% or less in the radwaste control room throughout the year at the outdoor design conditions specified above.
- Maintain indoor design temperature range between maximum of 32°C (90°F) and minimum of 15°C (59°F) in the electrical and HVAC equipment rooms throughout the year at the outdoor design conditions specified above.

- Maintain indoor design temperature range between maximum of 40°C (104°F) and minimum of 15°C (59°F) in the radwaste process areas throughout the year at the outdoor design conditions specified above.
- Limit airborne fission product release to the atmosphere from the ventilation system exhaust during normal plant operation.
- Limit concentration of airborne radioactivity to levels below the allowable values set by Appendix B of 10CFR20.
- Provide accessibility for adjustment and periodic inspection and testing of the system equipment and components to ensure continuous functional reliability.
- Provide sufficient back-up equipment and components to ensure continuous reliable performance during normal plant operation.
- Air filtration system equipment housing and ductwork design, construction, and testing shall be in compliance with requirements of ASME AG-1.

#### 9.4.6.2 System Description

The following site-specific supplement addresses COL License Information Item 9.17.

The Radwaste Building HVAC System P&ID is shown in Figure 9.4.10, sheets 1, 2, and 3 located in Chapter 21. Equipment flow rate data and performance are listed in Table 9.4-6a through Table 9.4-6m. Compliance with RG 1.140 is included in the following relevant subsections.

##### 9.4.6.2.1 Radwaste Building Control Room

STD DEP 9.4-5

*Heating, cooling, and pressurization of the control room are accomplished by ~~an air-conditioning system. The air conditioning system is a unit air conditioner consisting of a water-cooled condenser, compressor, cooling coil, heating coil, filters and fan. Outdoor air and recirculating air are mixed and drawn through a prefilter, a high-efficiency filter, a heating coil, a cooling coil, and two 100% supply fans. One fan is normally operating and the other fan is on standby. A pressure differential controller regulates the exfiltration from the control room to maintain it at a positive static pressure, preventing airborne radioactive contamination from entering.~~ two redundant 100% capacity air conditioning units served by a common air distribution system. Each air conditioning unit is a factory-assembled unit consisting of, in the direction of airflow, a return/outside air plenum, a pre-filter bank, a high efficiency filter bank, an electric heating coil, a chilled water coil, a supply air fan, and an isolation damper. Chilled water for the cooling coil is supplied from the HVAC normal cooling water system. No separate exhaust fan system is required.*

*The Radwaste Control Room HVAC Smoke Removal System consists of one 100% fan. This fan is operated manually. Smoke from the control room is released directly to the atmosphere. Make up for smoke removal is provided by the active air handling unit*

after its dampers have been automatically aligned for 100% outdoor air. During smoke removal operation the cooling coil valve automatically reverts to full flow to prevent coil freezing during the cold season.

*An area radiation monitor is provided in the radwaste control room and will alarm on high radiation to alert personnel in the area.*

One of the air conditioning units is manually placed in operation and runs continuously on a return airflow of approximately 80% of the total supply air to the room. Approximately 20% of the total supply air to the room is drawn by the unit from the outdoor air to be mixed with the return air and delivered to provide ventilation and control room pressurization.

Upon detection of smoke in the supply or return air ducts, the system shuts down and an alarm sounds in the radwaste and main control room.

#### **9.4.6.2.2 Radwaste Building Process Area HVAC System and Electrical and HVAC Equipment Rooms Ventilation System**

*The Radwaste Building Process Area HVAC System is a once-through type. Outdoor air is filtered, tempered, and delivered to the non-contaminated areas of the building. The supply air system consists of outdoor air intake, a prefilter, a high efficiency filter, heating coil, cooling coil, and two 100% capacity supply fans. One fan is normally operating and the other fan is on standby. The supply fan furnishes conditioned air through ductwork and diffusers, or registers to the non-contaminated and work areas of the building. Electric unit heaters are provided in the trailer bays, the sorting table area, and other areas of the building with significant heat loss. Air from the work and non-contaminated areas is exhausted through the tank and pump rooms and other contaminated areas. Thus, the overall airflow pattern is from the least potentially contaminated areas to the most contaminated areas. Supply airflow temperature, in an inverse proportion, is controlled by a space temperature controller to maintain the space temperature within the design range through the modulation in sequence of the air handling unit, chilled water cooling coil valve and the silicon controlled rectifier (SCR) controller of the air tempering electric coil. The exhaust air system consists of three 50% exhaust fans, two normally operating and one on standby. Exhaust Monitored exhaust air from the Radwaste Building is normally routed through a bypass to the plant stack. Upon radiation detection in the main exhaust duct, the exhaust air is automatically realigned and filtered through a prefilter and a high efficiency particulate air (HEPA) filter before release discharge to the plant stack. A radiation monitor downstream of the HEPA filter monitors the discharge airflow and upon detection of high levels of radioactivity, activates an alarm in the Radwaste Control Room and the Main Control Room, and shuts down and isolates the system, and it is monitored for airborne radioactivity. A high level of radioactivity activates an alarm in the main control room, simultaneously isolating the process area. The exhaust air is monitored before it is released to the main plant stack. Smoke removal is accomplished by the exhaust air fans by-passing the air-filtration equipment. Make up air for smoke removal is provided by the air handling unit. During smoke removal*

operation the cooling coil valve automatically reverts to full flow to prevent freezing during the cold season.

The electrical equipment room, HVAC equipment room, air filtration equipment room, elevator machine room, and Radwaste Building entrance heating, cooling, and pressurization is accomplished by an air conditioning unit with two redundant 100% capacity supply air fans. Supply air is distributed by an overhead air distribution system. The air conditioning unit is a factory-assembled unit consisting of, in the direction of airflow, a return/outside air plenum, pre-filter bank, high efficiency filter bank, chilled water coil, two redundant supply air fans, and isolation dampers. Chilled water for the cooling coil is supplied from the HVAC Normal Cooling Water System. Return air from the electrical equipment room, the HVAC equipment rooms, elevator machine room, and the building entrance is ducted back to the air conditioning unit by one of the two 100% capacity redundant return air fans. Air supplied to the air filtration equipment room is exhausted by the filtered exhaust air system of the Process Area HVAC System.

The air conditioning unit is manually placed in operation and runs continuously with one supply fan activated and with a minimum outdoor air supply of approximately 20% of the total supply air for pressurization. The return airflow of approximately 80% of the total supply air to the room is drawn by the activated return air fan and delivered back to the air conditioning unit.

Smoke removal is accomplished by one of the return air fans, which is operated manually. Exhausted smoke is discharged directly to the outdoors. Makeup air for smoke removal is provided by the air handling unit after its dampers have been automatically aligned for 100% outdoor air. During smoke removal operation the cooling coil valve automatically reverts to full flow to prevent coil freezing during the cold season.

#### 9.4.6.3 Safety Evaluation

Although the HVAC ~~System is~~ systems are not safety-related as defined in Section 3.2, several features are provided to ensure safe operation. ~~A~~ Completely separate HVAC ~~System is~~ systems are provided for the radwaste control room and the electrical equipment room, HVAC equipment room, air filtration equipment room, elevator machine room, and Radwaste Building entrance. Pressure control fans for radwaste areas are redundant, with provision for automatic start of the standby unit. Area and process exhaust radiation detectors and isolation dampers are provided to permit isolation of ~~the radwaste process areas~~ the redundant equipment. Duct penetrations and transfer air opening in equipment and tank rooms, with radiation shielding, are carefully configured for radiation shine geometry to prevent impingement of direct radiation on personnel. The exhaust system air filtration equipment is in compliance with Regulatory Guide 1.140.

When high radiation is detected downstream of the air-filtration equipment, the operator should shutdown the system as a precaution. The source of the high radioactivity should be identified and corrective action should be taken prior to restart of the system.

#### 9.4.6.4 Tests and Inspections

*The system is designed to permit periodic inspection of important components, such as fans, motors, belts, coils, filters, ductwork, piping and valves, to ensure the integrity and capability of the system. Local display and/or indicating devices are provided for periodic inspection of vital parameters such as room temperature, and test connections are provided in exhaust filter trains and piping for periodic checking of air and water ~~Air Conditioning, Heating, Cooling and Ventilating Systems~~ 9.4-33 flows for conformance to the design requirements. All major components are tested and inspected as separate components prior to installation to ensure design performance. The system is pre-operationally tested in accordance with the requirements of Chapter 14. The system air filtration units are tested in place for casing leakage, in place aerosol leak test for HEPA filters frame or bypass leakage in accordance with ASME N510. HEPA combined penetration and bypass leakage limitations are in compliance with Regulatory Guide 1.140. Ductwork, isolation dampers, and connections associated with air filtration systems are tested in accordance with ASME AG-1.*

#### 9.4.6.5 Instrumentation Application

##### 9.4.6.5.1 Radwaste Building Control Room HVAC

*The air conditioning unit for the radwaste control room HVAC is started manually. A temperature indicating controller modulates the air conditioning system via chilled water cooling coil valve and an electric heating coil SCR to maintain space conditions. A differential pressure indicating controller modulates ~~inlet vanes in the supply fan air inlets~~ outdoor and return air dampers to maintain the positive static room pressure. Differential pressure indicators measure the pressure drop across the filter bank and provide an alarm when the filter is due for replacement. Detection of smoke in the supply or the return air duct will sound an alarm and automatically shut down the activated unit. Furthermore, alarms shall be generated upon airflow failure, high supply air temperature, radiation detection, and lack of space pressure differential.*

##### 9.4.6.5.2 Radwaste Building Process Area HVAC

The information in this section of the reference ABWR DCD is incorporated by reference with the following supplement.

*The air exhaust and supply fans for the Radwaste Building Process Area HVAC are started manually. The fan ~~inlet~~ isolation dampers open when the fan is started. A flow switch installed in the exhaust and supply fan discharge duct activates an alarm on indication of fan failure in the main and radwaste control rooms and automatically starts the standby fan. The exhaust fan is fans are interlocked with supply fan the air handling unit supply fans to prevent the supply fan from operating if the exhaust fan is shut down so that the operation of two exhaust fans is a prerequisite to starting the supply air fans. Local heating shall be provided by electric unit heaters provided with integral controls. Two Command signals from multiple pressure-indicating controllers modulate variable inlet vanes in the supply fan of the activated exhaust air fans to maintain the area at a negative static pressure with respect to the atmosphere and the adjacent clean areas in the building. Upon negative static pressure rise after the activated exhaust fans have*

~~reached maximum flow, the variable inlet vanes on the activated supply air fans modulate to reduce supply airflow to the radwaste process areas. The switch causes an~~ An alarm to be is activated if the negative pressure falls below rises above the preset limit. Differential pressure indicators measure the pressure drop across the filter section. ~~The switch and~~ causes an alarm to be activated if the pressure drop exceeds the preset limit.

~~Radiation monitors are installed in the radwaste process area exhaust duct to the main plant stack. A high radiation signal in the duct causes alarms to annunciate in the main control room and the radwaste control room. If the radwaste process area exhaust radiation alarm continues to annunciate, the work area branch ducts are manually isolated selectively to locate the affected building area. Should this technique fail, because the airborne radiation has generally spread throughout the building, control room air conditioning continues operating. However, the air conditioning for the balance of the building is shut down. The operators, using approved plant health physics procedures, then enter the work areas to locate and isolate the leakage source. The supply and exhaust air ductwork have manual balancing dampers provided in the branch ducts for balancing purposes. The dampers are locked in place after the system is balanced. Upon detection of smoke in the supply or exhaust air ducts, the system shuts down and an alarm sounds in the radwaste and main control room. The system shall be provided with airflow and differential pressure monitoring and recording. Furthermore, alarms shall be generated upon airflow failure of the activated supply and exhaust fans, high and low supply air temperature, radiation detection in the exhaust air ducts, high differential pressure across the filter banks, and lack of space sub atmospheric pressure.~~

#### 9.4.6.5.3 ~~Incinerator Exhaust Stack~~ Not Used

~~Radiation monitors are installed in the incinerator exhaust stack. A high radiation signal in the stack causes alarms to annunciate in the main control room and the radwaste control room. See Subsection 11.5.2.2.11 and Table 11.5-2.~~

#### 9.4.6.5.4 Electrical Equipment Room, HVAC Equipment Room, Air Filtration Equipment Room, Elevator Machine Room, and Radwaste Building Entrance HVAC

STD DEP 9.4-5

The air conditioning unit for the electrical and HVAC equipment rooms, air filtration room, elevator machine room, and building entrance is started manually. One of the two 100% capacity supply fans is activated and run continuously. Differential flow switch across the fan will alarm in the control room upon airflow failure and initiate the operation of the standby supply fan. A temperature-indicating controller modulates, in sequence, the outdoor air, the return air, and the relief air dampers of the air conditioning unit for free cooling using outdoor air. Upon further room temperature rise the unit dampers revert to minimum outdoor airflow and modulate, in sequence, the chilled water cooling coil valves. Heating is provided either by electric unit heaters with integral control or by heating coil with SCR to maintain space conditions. A differential pressure indicating controller overrides temperature control and modulates outdoor

and return air dampers to maintain the positive static pressure in the served areas. Differential pressure indicators measure the pressure drop across the filter bank and provide an alarm when the filter is due for replacement. Detection of smoke in the supply or the return air duct will sound an alarm and automatically shutdown the activated unit. Furthermore, alarms are generated upon airflow failure of the activated supply and return air fans; high and low supply air temperature, and lack of space sub atmospheric pressure.

#### 9.4.8 Service Building HVAC System

STP DEP 9.4-1

STDP DEP 9.4-3

*The Service Building HVAC System supplies air to ~~consists of two subsystems; the Clean Area HVAC System and the Controlled Area HVAC System.~~*

##### 9.4.8.1.2 Power Generation Design Bases

STDP DEP 9.4-3

- (1) *The Service Building Clean Area HVAC System is designed to maintain a quality environment suitable for personnel health and safety in the Service Building. It is designed to limit the maximum temperature in the Service Building to 29°C. The temperature in each area conforms to the equipment requirements in that area.*
- (2) *The Service Building Clean Area HVAC System provides a quantity of filtered outdoor air to purge any possible contamination.*
- (3) *~~Both the Clean Area HVAC System and the Controlled Area HVAC System operate manually and~~ The Service Building HVAC System is started manually and operates continuously. Isolation dampers at each supply fan, each exhaust fan, and each filter package close when the respective equipment is not operating. There is an additional isolation damper at the supply air inlet which closes when the supply air system is not operating. An automatic damper in the supply system ductwork regulates the flow of air to maintain the Service Building clean areas at a positive pressure with respect to the atmosphere.*
- (4) *In the event of a loss of offsite electric power, the Service Building HVAC System is shut down. The combustion turbine generator (CTG) backed power is available for manual loading by the operator to start the Service Building HVAC System.*
- (5) *The clean areas served by the Service Building clean area HVAC System has an emergency filter train. It is automatically or manually operated. In an emergency it supplies filtered air for the TSC, OSC, lunch room, offices, health physics lab, security offices, and other normally clean areas.*

### 9.4.8.2 System Description

STOP DEP 9.4-3

- (1) *The Service Building Clean Area HVAC System supplies filtered, heated or cooled air to both the clean and controlled areas through a central fan system consisting of an outside air intake, Air Conditioning Unit consisting of filters, heating coils, cooling coils, two 50% capacity supply air fans and supply air ductwork.*
- (2) *Two 50% capacity exhaust air fans serve the The Clean Area HVAC System ~~has two 50% capacity exhaust air fans~~. They take air from the clean areas through the exhaust ducts and discharge the air on the Service Building roof.*
- (3) *Two 50% capacity exhaust air fans serve the The Controlled Area HVAC System routes ~~They route potentially contaminated air to two 50% capacity exhaust air fans to~~ from the controlled areas and discharge the air to the common plant stack.*
- (6) *The Service Building clean area HVAC System is provided with an emergency filter train consisting of a heater/demister, prefilter, HEPA filter, ~~5-110.2~~ cm charcoal filter bed, a second HEPA filter, and two fans.*
- (7) *Controls and Instrumentation*

STP DEP 9.4-1

STOP DEP 9.4-3

- (c) *Radiation monitors ~~and provisions for toxic gas monitors~~ at the supply air inlet with alarms to TSC and signal for automatic start of the emergency filter train.*

STOP DEP 9.4-3

- (d) *On manual or automatic initiation, the Service Building clean area HVAC System can be put into high radiation mode. On switch over, the normal air intake damper closes, the minimum outside air intake damper opens, the exhaust fans stop and the ventilation air for the clean area is routed through the emergency filter train-starts. System pressurizes clean areas of the service building.*

## 9.4.10 COL License Information

### 9.4.10.1 Service Building HVAC System

The following site-specific supplement addresses COL License Information Item 9.16.

The Service Building HVAC System P&ID is shown in Figure 9.4-11. Flow rates and component capacities are given in Tables 9.4-3, 9.4-4h, 9.4-7a and 9.4-7b. Radiation monitors are provided at the supply air inlet as shown in Figure 9.4-11 and discussed



in Section 9.4.8.2 (7c). As discussed in Subsection 2.2S.3, no hazardous chemicals with quantities exceeding the criteria of Regulatory Guide 1.78 have been identified. Instrumentation to detect and alarm a hazardous chemical release in the STP 3 & 4 vicinity and to isolate the Service Building Clean Area from such releases is not provided.

The Service Building Clean Area emergency filter unit complies with all applicable provisions of Regulatory Guide 1.140, Rev. 2, Section C.

#### **9.4.10.2 Radwaste Building HVAC System**

The following site-specific supplement addresses COL License Information Item 9.17.

The detailed equipment lists, system flow rates, and compliance with RG 1.140 for Radwaste Building HVAC System is addressed in Subsection 9.4.6.2.

Table 9.4-1 Drywell Cooling System Non-Safety-Related Components

<b>RCS Cooling Coils</b>	
<i>Number</i>	3
<i>Type</i>	<i>Plate Fin</i>
<i>Airflow Rate</i>	<i>1000 m<sup>3</sup>/min.</i>
<i>Cooling Capacity</i>	<i>1023.42 MJ/h</i>
<i>Air Temperature (Inlet/Outlet)</i>	<i>57°C/42°C</i>
<i>Water Temperature (Inlet/Outlet)</i>	<i>35°C/40°C</i>
<i>Water Flow Rate</i>	<i>13.5 L/s</i>
<b>HNCW Cooling Coils</b>	
<i>Number</i>	2
<i>Type</i>	<i>Plate Fin</i>
<i>Air Flow Rate</i>	<i>277 m<sup>3</sup>/min.</i>
<i>Cooling Capacity</i>	<i>791.31 MJ/h</i>
<i>Air Temperature (Inlet/Outlet)</i>	<i>44°C/12°C</i>
<i>Water Temperature (Inlet/Outlet)</i>	<i>7°C/42°C <u>14.7°C</u></i>
<i>Water Flow Rate</i>	<i><del>10.5 L/s</del> <u>6.8 L/s</u></i>
<b>Fans</b>	
<i>Number</i>	3
<i>Type</i>	<i>Centrifugal</i>
<i>Capacity</i>	<i>1000 m<sup>3</sup>/min.</i>
<i>Head</i>	<i>1.47E+03 Pa</i>

Table 9.4-3 HVAC Flow Rates (~~Response to Question 430.243~~)

Safety-Related HVAC System	Flow Rates (m <sup>3</sup> /h)
R/B Electrical HVAC Division A	30,000
R/B Electrical HVAC Division B	30,000
R/B Electrical HVAC Division C	30,000
DG HVAC Division A	160,000
DG HVAC Division B	160,000
DG HVAC Division C	160,000
C/B Electrical HVAC Division A	35,000
C/B Electrical HVAC Division B	35,000
C/B Electrical HVAC Division C	35,000
CRHA HVAC Division B	80,000
CRHA HVAC Division C	80,000
<b>Non-Safety-Related HVAC Systems</b>	<b>Flow Rates (m<sup>3</sup>/h)</b>
R/B Secondary Containment HVAC	168,500
T/B <del>Ventilation</del> HVAC System	<del>341,500</del> 385,500
<b>T/B EEA HVAC System</b>	<b>245,200</b>
RIP ASD HVAC Division A	50,000
RIP ASD HVAC Division B	50,000
<b>Service Building Emergency Filtration Unit</b>	<b>5,300</b>
<b>Service Building Air Conditioning Unit</b>	<b>55,200</b>

**Table 9.4-4e HVAC System Component Descriptions — Safety-Related Fan Coil Units (Response to Question 430.243)**

<b>Safety-Related Fan Coil Units</b>	<b>Capacity (MJ/h)</b>
<i>HPCF Pump Room Div B</i>	460.55
<i>HPCF Pump Room Div C</i>	460.55
<i>RHR Pump Room Div A</i>	307.73
<i>RHR Pump Room Div B</i>	307.73
<i>RHR Pump Room Div C</i>	307.73
<del><i>FCS Room Div B</i></del>	<del>54.85</del>
<del><i>FCS Room Div C</i></del>	<del>54.85</del>
<i>RCIC Pump Room Div A</i>	69.08
<i>CAMS Room Div A</i>	83.74
<i>CAMS Room Div B</i>	83.74
<i>SGTS Room Div B</i>	16.75
<i>SGTS Room Div C</i>	16.75

**Table 9.4-4f HVAC System Component Descriptions-Non-Safety-Related Heating Cooling Coils (Response to Question 430.243)**

<b>Heating /Cooling Coils</b>	<b>Quantity</b>	<b>Cooling (MJ/h)</b>	<b>Heating (MJ/h)</b>
<i>R/B Secondary Containment HVAC</i>	<del>1</del> <del>3 (1 on standby)</del>	<del>6435.95</del> 4848.48	<del>9601.17</del> 3251.52
<i>RIP ASD HVAC Division A</i>	1	2110.15	
<i>RIP ASD HVAC Division B</i>	1	2110.15	

**Table 9.4-4h HVAC System Component Descriptions—Non-Safety-Related Filters**  
~~(Response to Question 430.243)~~

<b>Filters</b>	<b>Quantity</b>	<b>Capacity (m<sup>3</sup>/h)</b>
R/B Secondary Containment HVAC	3 (1 on standby)	86,250
R/B Primary Containment Intake HEPA Filter	1	22,000
R/B Secondary Containment Exhaust Fans	3	57,500 (each)
<b>Service Building Air Conditioning Unit</b>	<b>1</b>	<b>55,200</b>
<b>Service Building Emergency Filtration Unit</b>	<b>1</b>	<b>5,300</b>

**Table 9.4-4i HVAC System Component Descriptions—Non-Safety-Related Air Handling Units (Response to Question 430.243) \***

Non-Safety-Related Air Handling Units	Quantity	Capacity (MJ/h)
Main Steam Tunnel	2	628.02
Refueling Machine Control Room	1	83.74
ISI Room	1	54.43
MG Set Room	2	<del>1047.96</del> 321.84
C/B Non-Safety-Related Electric Room	1	211.01
R/B FPC Room	2	28.47
CRD Control Room	1	18.42
SPCU Pump Room	1	42.29

*\* The COL applicant shall supply equipment lists for the Service Building HVAC and the Radwaste Building HVAC system. See Subsection 9.4.10.1 for the Service Building, and 9.4.10.2 for the Radwaste Building.*

~~Table 9.4.5 Turbine Building and Electrical Building HVAC System – Non Safety Related Equipment \*~~

Item	<del>Turbine Building- Air Supply TRV TBV F-1A thru C</del>	<del>T/B Clean Area- Return/Exhaust TBV F-2A thru C</del>	<del>T/B Equipment- Compartment Exhaust TBV F-24A &amp; 24B</del>	<del>T/B Lube Oil- Exhaust TBV F-4A &amp; B</del>	<del>Condensate Pump- Room Recirc. Unit TBV F-8A thru C</del>
Type-	Builtup unit	Central station air handler-	Builtup unit-	Fan-	Central station air handler
Number of units	1	3	1	2	3 50% each
Flow rate (m <sup>3</sup> /h)-	<del>341,500</del> <b>385,500</b>	<del>168,000</del> <b>189,900/unit</b>	272,000-	12,600-	<del>51,000/unit</del>
Fan:-					
Type-	Centrifugal-	Centrifugal-	Centrifugal-	Centrifugal-	Centrifugal-
No. of fans per unit	3	1	2	1	1
No. of running fans	2	2	1	1	2
Heating coils:-		None-		None-	None-
No. of banks per unit	1	—	<del>1</del> <b>None</b>		—
Capacity, each (MJ/h)-	<del>11,605.81</del> <b>13,133</b>	—	<del>369.28</del> <b>None</b>		—
Cooling coils:-		None-	None-	None-	
No. of banks per unit	6	—	—	—	
Capacity, each (MJ/h)-	<del>1582.61</del> <b>1788</b>	—	—	—	949.57-
Prefilters:-		None-	None-	None-	
Type-	Glass, roll-	—	—		—
Capacity (m <sup>3</sup> /h)-	<del>341,500</del> <b>385,500</b>	—	—		—
ASHRAE 52 eff.-	35%-	—	—		—
Filters:-				None-	
Type-	High eff.-	Bag type,-	Bag type,-	—	<del>Medium</del> <b>High eff-</b>
Capacity (m <sup>3</sup> /h)-	<del>341,500</del> <b>385,500</b>	<del>168,000</del> <b>189,900/unit</b>	272,000-	—	<del>51,000/unit</del>
ASHRAE 52 eff.-	85%-	90%-	90%-	—	85%-

\* Response to Question 430.242C.

**Table 9.4-5a Turbine Building and Electrical Building HVAC System — Non Safety Related Equipment (Continued)**

Item	<del>Heater Drain/RFP Pump P1A Room Recirc. Unit TBV F 9A thru G</del>	<del>Heater Drain Condensate Booster Pump P1B Room Recirc. Unit TBV F 9D thru F</del>	<del>Filter Pump Recirc. and Valve Room Recirc. Unit TBV F 10A thru G</del>	<del>Demineralizer Pump and Valve Room Recirc. Unit TBV F 12A thru G</del>	<del>Reactor Feed Pump Power Supply Room Recirc. Unit TBV F 13A thru G</del>
Type-	Central station air handler-	Central station air handler-	Central station air handler-	Central station air handler-	Central station air handler-
Number of units-	3-50% each-	3-50% each-	3-50% each-	<b>3-50% each</b>	<b>3-50% each</b>
Flow rate (m <sup>3</sup> /h)/unit-	<b>11,900 42,400</b>	<b>11,900 5,100</b>	5,200-	<b>8,700 18,000</b>	1,825-
Fan:-					
Type-	Centrifugal-	Centrifugal-	Centrifugal-	Centrifugal-	Centrifugal-
No. of fans per unit-	1-	1-	1-	1-	1-
No. of running fans-	2-	2-	2-	2-	2-
Heating coils:-	None:-	None:-	None:-	None:-	None-
No. of banks per unit-	—	—	—	—	—
Capacity, each (MJ/h)-	—	—	—	—	—
Cooling coils:-					
Capacity, each (MJ/h)-	<b>221.57 796.0</b>	<b>221.57 94.50</b>	97.13-	335.36-	34.33-
Filters:-					
Type-	<b>Medium High eff</b>	<b>Medium High eff</b>	<b>Medium High eff</b>	<b>Medium High eff</b>	<b>Medium High eff</b>
Capacity (m <sup>3</sup> /h)/unit-	<b>11,900 42,400</b>	<b>11,900 5,100</b>	5,200-	<b>8,700 18,000</b>	1,825-
ASHRAE 52 eff.-	85%-	85%-	85%-	85%-	85%-



**Table 9.4 5b Turbine Building and Electrical Building HVAC System – Non Safety Related Equipment (Continued)**

Items	TCW Heat Exchanger Area Recirculation Unit TBV-F-14A thru C	Condenser Compt. Room Level 2 Recirculation Unit TBV-F-15A thru C	SJAE A and Recombiner Room Recirculation Unit TBV-F-17A thru C	SJAE B and Recombiner Room Recirculation Unit TBV-F-17D thru F	Demineralizer Room Recirculation Unit TBV-F-18A thru C
Type-	Central station air handler	Central station air handler	Central station air handler	Central station air handler	Central station air handler
Number of units-	3-50% each	3-50% each	3-50% each	3-50% each	3-50% each
Flow rate (m <sup>3</sup> /h)/unit-	8,200	24,300	22,100	22,100	2,635
Fan:-					
Type-	Centrifugal	Centrifugal	Centrifugal	Centrifugal	Centrifugal
No. of fans per unit-	4	4	4	4	4
No. of running fans-	2	2	2	2	2
Heating coils:-	None	None	None	None	None
No. of banks per unit-	–	–	–	–	–
Capacity, each (MJ/h)-	–	–	–	–	–
Cooling coils:-					
Capacity, each (MJ/h)-	154.07	454.69	417.84	417.84	48.99
Filters:-					
Type-	Medium <b>High</b> eff	Medium <b>High</b> eff	Medium <b>High</b> eff	Medium <b>High</b> eff	Medium <b>High</b> eff
Capacity (m <sup>3</sup> /h)/unit-	8,200	24,300	22,100	22,100	2,635
ASHRAE 52 eff.-	85%	85%	85%	85%	85%

**Table 9.4-5 Turbine Island HVAC System - Non-Safety-Related Heating Cooling Coils**

Heating/Cooling Coils	Quantity	Cooling (MJ/h)	Heating (MJ/h)
Turbine Building HVAC	1	19,919.52	7,905.6
Turbine Building Electrical Equipment Area HVAC	2(1 on standby)	8,849.52	3,153.6

**Table 9.4-5a Turbine Island HVAC System - Non-Safety-Related Fans**

Fans	Quantity	Capacity (m <sup>3</sup> /h)
T/B HVAC Supply Fans	3 (1 on standby)	192,750
T/B HVAC Exhaust Fans	3 (1 on standby)	27,850
T/B HVAC Compartment Exhaust Fans	2 (1 on standby)	359,700
T/B HVAC Lube Oil Area Exhaust Fans	2 (1 on standby)	9,300
T/B EEA HVAC Supply Fans	2 (1 on standby)	245,200
T/B EEA HVAC Exhaust Fans	2 (1 on standby)	211,500

**Table 9.4-5b Turbine Island HVAC System - Non-Safety-Related Filters**

Filters	Quantity	Capacity (m <sup>3</sup> /h)
T/B HVAC Supply Filters	1	385,500
T/B HVAC Exhaust Filters	3 (1 on standby)	27,850
T/B HVAC Compartment Exhaust Filters	1	359,700
T/B HVAC Supply Filters	1	245,200

**Table 9.4-5c Turbine Building and Electrical Building HVAC System Non-Safety Related Equipment (Continued)**

Item	Condenser Compt.	TCW Pump Area	Turbine Area	Steam to Hot Water
	Room Level 3 Recir. Unit	Recirculation Unit	Recirculation Unit	Heat Exchanger Area
	<del>TRV-TBV-F-19A thru C</del>	<del>TRV-TBV-F-20A thru C</del>	<del>TRV-TBV-F-21A thru C</del>	<del>TBV-E-01A&amp;1B</del>
Type-	Central-station	Central-station	Central-station	Heat-exchanger
	air-handler	air-handler	air-handler	
Number-of-units-	3-50%-each	3-50%-each	3-50%-each	2-100%-each
Flow-rate (m <sup>3</sup> /h)/unit	23,800	11,900	28,900	
Fan:-				
Type-	Centrifugal	Centrifugal	Centrifugal	—
No. of fans per unit-	4	4	4	—
No. of running fans-	2	2	2	—
Heating coils:-	None	None	None	—
No. of banks per unit-	—	—	—	—
Capacity, each (MJ/h)-	—	—	—	—
Cooling coils:-				
Capacity, each (MJ/h)-	444.22	221.48	542.19	—
Filters:-				
Type-	Medium-High-eff	Medium-High-eff	Medium-High-eff	—
Capacity (m <sup>3</sup> /h)/unit-	23,800	11,800 11,900	28,900	—
ASHRAE 52-eff.-	85%	85%	85%	—
Heat Exchanger:-				
Type-				Shell-and-Tube
Capacity (MJ/h)-				22,156.55

**Table 9.4-5c Turbine Island HVAC System - Non-Safety-Related Air Handling Units**

<b><u>Non-Safety Related Air Handling Units</u></b>	<b><u>Quantity</u></b>	<b><u>Capacity (MJ/h)</u></b>
<b><u>[Turbine Building HVAC]</u></b>		
		<u>68.76 (Cooling)</u>
<u>OG Holdup Room</u>	<u>2 (1 on standby)</u>	<u>11.88 (Heating)</u>
<u>Condenser Compartment Upper Area</u>	<u>3 (1 on standby)</u>	<u>582.48</u>
<u>Condenser Compartment Lower Area</u>	<u>3 (1 on standby)</u>	<u>567.36</u>
<u>MSH (A) Compartment</u>	<u>2 (1 on standby)</u>	<u>707.4</u>
<u>MSH (B) Compartment</u>	<u>2 (1 on standby)</u>	<u>703.44</u>
<u>Turbine Operation Area</u>	<u>2 (1 on standby)</u>	<u>605.88</u>
<u>IPB Cooling Unit Room</u>	<u>2 (1 on standby)</u>	<u>355.32</u>
<u>IPB Area</u>	<u>2 (1 on standby)</u>	<u>325.8</u>
<u>SCR Panel Room</u>	<u>2 (1 on standby)</u>	<u>355.32</u>
<b><u>[Turbine Building Electrical Equipment Area HVAC]</u></b>		
<u>HVAC Supply Fans Room</u>	<u>2 (1 on standby)</u>	<u>246.24</u>
<u>Air Compressor Room</u>	<u>2 (1 on standby)</u>	<u>310.68</u>
<u>TWC Heat Exchanger Room</u>	<u>2 (1 on standby)</u>	<u>792</u>
<u>P/C Room</u>	<u>5 (2 on standby)</u>	<u>792</u>
<u>ASD (A), (B) Room</u>	<u>3 (1 on standby)</u>	<u>968.76</u>
<u>ASD (C), (D) Room</u>	<u>3 (1 on standby)</u>	<u>785.88</u>
<u>Electrical Equipment Room</u>	<u>2 (1 on standby)</u>	<u>469.08</u>

Table 9.4-5d ~~Not Used~~ Turbine Building Electrical Equipment Areas HVAC System Non-Safety Related Equipment

Item	Electrical- Equipment Areas- HVAC Supply Air- Unit- TBV F 3A & 3B	Electrical- Equipment Areas- HVAC Exhaust- Air Unit- TBV F 6A & 6B	Electrical Room- #1 (El. 12300- mm)- Recirculation- Unit- TBV F 16A & 16B	Electrical Room- #2 (El. 12300- mm)- Recirculation- Unit- TBV F 22A & 22B	Electrical Room- #3 (El. 20300- mm)- Recirculation- Unit- TBV F 23A & 23B	Air Compressor- Room- Recirculation- Unit- TBV F 5A & 5B
Type	Central station air handler	Central station air handler	Central station air handler	Central station air handler	Central station air handler	Central station air handler
Number of units	2-100% each	2-100% each	2-100% each	2-100% each	2-100% each	2-100% each
Flow rate (m <sup>3</sup> /h)/unit	28,900	20,300	135,800	15,200	570,500	284,200
Fan:						
Type	Centrifugal	Centrifugal	Centrifugal	Centrifugal	Centrifugal	Centrifugal
No. of fans per unit	1	1	1	1	1	1
No. of running fans	1	1	1	1	1	1
Heating Coils:	None	None	None	None	None	None
No. of banks per unit	-	-	-	-	-	-
Capacity, each (MJ/h)	-	-	-	-	-	-
Cooling coils:						
Capacity, each (MJ/h)	580.0	-	2550.0	285.0	10,716.0	485.00
Filter:						
Type	Low eff	-	High eff	High eff	High eff	High eff
Capacity (m <sup>3</sup> /h)/unit	28,900	-	135,800	15,200	570,500	284,200/unit
ASHRAE 52 efficiency	35%	-	85%	85%	85%	85%

Table 9.4-6a Radwaste Building Control Room Air Conditioning Unit

Equipment Name	Radwaste Building Control Room Air Conditioning Unit
Equipment ID Number	ACU 001A, ACU 001B
Number of Units	2
Air Flow Capacity, m <sup>3</sup> /h	<del>12,750</del> 16,650
Supply Air Fan Number per Unit	1 × 100%
Supply Air Fan Motor kW	11.2
Cooling Coil Capacity, Mj/h	<del>304</del> 381
Heating Coil Heating Capacity, MJ/h	<del>151.6</del> 160.4
Pre-Filters Type	Disposable
Final-Filter Efficiency – NBS Dust Spot Test	60%

Table 9.4-6b Electrical and HVAC Equipment Rooms Air Conditioning Unit

Equipment Name	Electrical and HVAC Equipment Room Air Conditioning Unit
Equipment ID Number	ACU 002
Number of Units	1
Air Flow Capacity, m <sup>3</sup> /h	<del>26,000</del> 36,190
Supply Air Fan Number per Unit	2 × 100%
Supply Air Fan Motor kW	22.38
Cooling Coil Capacity, MJ/h	<del>830</del> 1,161
Pre-Filters Type	Disposable
Final-Filter Efficiency – NBS Dust Spot Test	60%

Table 9.4-6c Radwaste Process Areas Air Conditioning Unit

Equipment Name	Radwaste Process Areas Air Conditioning Unit
Equipment ID Number	ACU 003
Number of Units	1
Air Flow Capacity, m <sup>3</sup> /h)	<del>71,560</del> 67,960
Supply Air Fan Number per Unit	2 × 100%
Supply Air Fan Motor, kW	<del>56</del> 44.7
Cooling Coil Capacity, MJ/h	<del>2704</del> 2,347.5
Heating Coil Heating Capacity, MJ/h	<del>1318</del> 925.3
Pre-Filters Type	Disposable
Final-Filter Efficiency – NBS Dust Spot Test	60%

Table 9.4-6d HVAC Equipment Room Unit Heaters

Equipment Name	HVAC Equipment Room Unit Heaters
Tag Number	EUH 1, EUH 2, EUH 3
Quantity	3
Type	Electric
Total Heating Capacity (kW)	<del>158</del>

Table 9.4-6e Air Filtration Equipment Room Unit Heaters

Equipment Name	Air Filtration Equipment Room Unit Heaters
Tag Number	EUH 4
Quantity	1
Type	Electric
Total Heating Capacity (kW)	5

Table 9.4-6f ~~Building Entrance Area Duct Heater~~Not Used

Equipment Name	<del>Building Entrance Area Duct Heater</del>
<del>Tag Number</del>	<del>DH 001</del>
<del>Quantity</del>	<del>1</del>
<del>Type</del>	<del>Electric</del>
<del>Total Heating Capacity (kW)</del>	<del>36</del>

Table 9.4-6g Building Entrance Area Cabinet Heater

Equipment Name	Building Entrance Area Cabinet Heaters
Tag Number	CUH-1
Quantity	1
Type	Electric
Total Heating Capacity (kW)	<del>189</del>

Table 9.4-6h Radwaste Process Area Unit Heaters

Equipment Name	Radwaste Process Area Unit Heaters
Tag Number	EUH 5, EUH 6, EUH 7, EUH 8, EUH 9, EUH 10
Quantity	6
Type	Electric
Total Heating Capacity (kW)	<del>50</del> 18

Table 9.4-6i Elevator Machine Room Tank and Pump Area Unit Heaters

Equipment Name	Elevator Machine Room Tank and Pump Area Unit Heaters
Tag Number	<del>EUH 11, EUH 12, EUH 13, EUH 14</del> EUH-11
Quantity	<del>4</del> 1
Type	Electric
Total Heating Capacity (kW)	<del>254</del>

Table 9.4-6j Control Room Smoke Purge Fan

Equipment Name	Control Room Smoke Purge Fan
Equipment ID Number	FAN 001
Number of Units	1 × 100%
Fan Flow, m <sup>3</sup> /h	<del>12,750</del> 16,650
Fan Motor, kW	2.24



Table 9.4-6k Electrical and HVAC Equipment Rooms Return Air Fans

Equipment Name	Electrical and HVAC Equipment Rooms Return Air Fans
Equipment ID Number	FAN 002A, FAN 002B
Number of Units	2 × 100%
Service	Electrical and HVAC Equipment Rooms HVAC System (recirculation and smoke exhaust)
Fan Flow, m <sup>3</sup> /h)	<del>17,750</del> 26,680
Fan Motor, kW	<del>5.62</del> 24

Table 9.4-6l Radwaste Process Areas Exhaust Air Fans

Equipment Name	Radwaste Process Areas Exhaust Air Fans
Equipment ID Number	FAN 003A, FAN 003B, FAN 003C
Number of Units	3 × 50%
Fan Flow, m <sup>3</sup> /h	<del>45,050</del> 37,720
Fan Motor, kW	56

Table 9.4-6m Radwaste Process Areas Air Exhaust Filtration Units

Equipment Name	Radwaste Process Areas Air Exhaust Filtration Units
Equipment ID Number	FLT 001A, FLT 001B, FLT 001C
Number of Units	3
Unit Air-Flow, m <sup>3</sup> /h	<del>45,040</del> 37,720
HEPA Filter Efficiency, on 0.30 micron particles	99.9%

**Table 9.4-7a Service Building HVAC System Component Descriptions**  
**Non-Safety Related Heating/Cooling Coils**

<b>Heating/Cooling Coils</b>	<b>Quantity</b>	<b>Cooling (MJ/h)</b>	<b>Heating (MJ/h)</b>
Service Building Air Conditioning Unit	1	1,688	640
Service Building Emergency Filtration Unit	1	No Coil Required	36

**Table 9.4-7b Service Building HVAC System Component Descriptions**  
**Non-Safety Related Fans**

<b>Fans</b>	<b>Quantity</b>	<b>Capacity (m<sup>3</sup>/h) (each)</b>	<b>Rated Power (KW) (each)</b>
S/B Air Conditioning Unit Supply Fans	2	27,600	22.5
S/B Clean Area Exhaust Fans	2	1,200	1.2
S/B Controlled Area Exhaust Fans	2	11,900	5.6
S/B Emergency Filtration Unit Fans	2	2,650	3.75

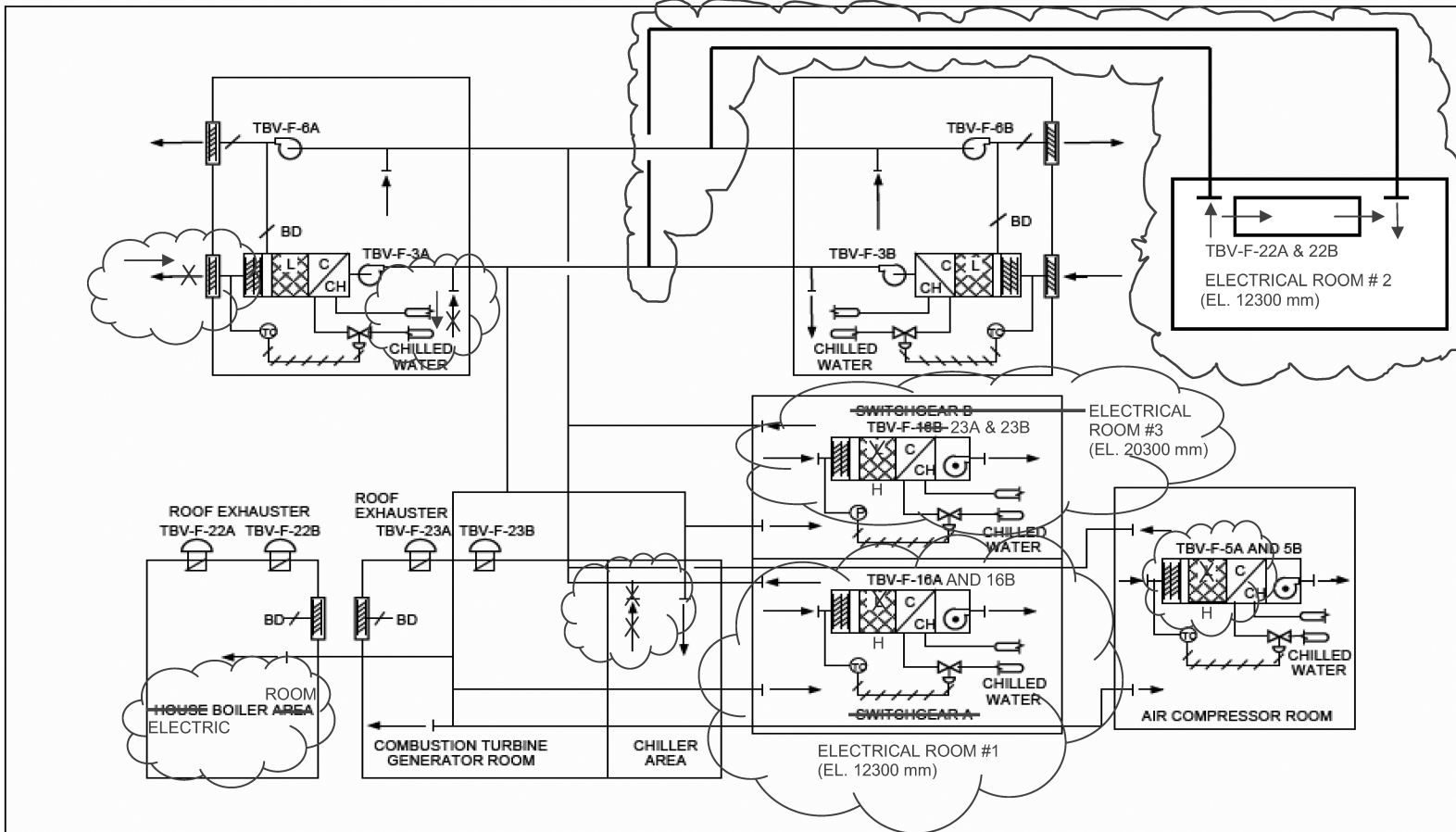


Figure 9.4-2c Turbine Building Electrical Equipment Areas (EEA) HVAC System Diagram

*The following figures are modified, and located in Chapter 21:*

- Figure 9.4-1 Control Building HVAC (Sheets 1-5)
- *Figure 9.4-3 Secondary Containment HVAC System (Sheets 1-3)*
- *Figure 9.4-10 Radwaste Building HVAC (Sheets 1-3)*
- Figure 9.4-11 Service Building HVAC P&ID (Sheets 1 and 2)