

Low Pressure Safety Injection System

Chapter 11.2



Objectives

1. State the purpose of the low pressure safety injection (LPSI) system.
2. Describe the LPSI flow paths including suction supplies, discharge points, and major components during the following operations:
 - a. Power operations
 - b. Shutdown cooling
 - c. Injection phase
 - d. Recirculation phase

Objectives

3. State the purpose of the shutdown cooling heat exchangers, when the heat exchangers are used, and the cooling medium for the heat exchangers.
4. Explain why RCS pressure and temperature limits are placed on the initiation of shutdown cooling.
5. Explain how the LPSI system is protected against over pressurization while operating in the shutdown cooling mode of operation.

Figure 11.2-1 LPSI Flow Diagram

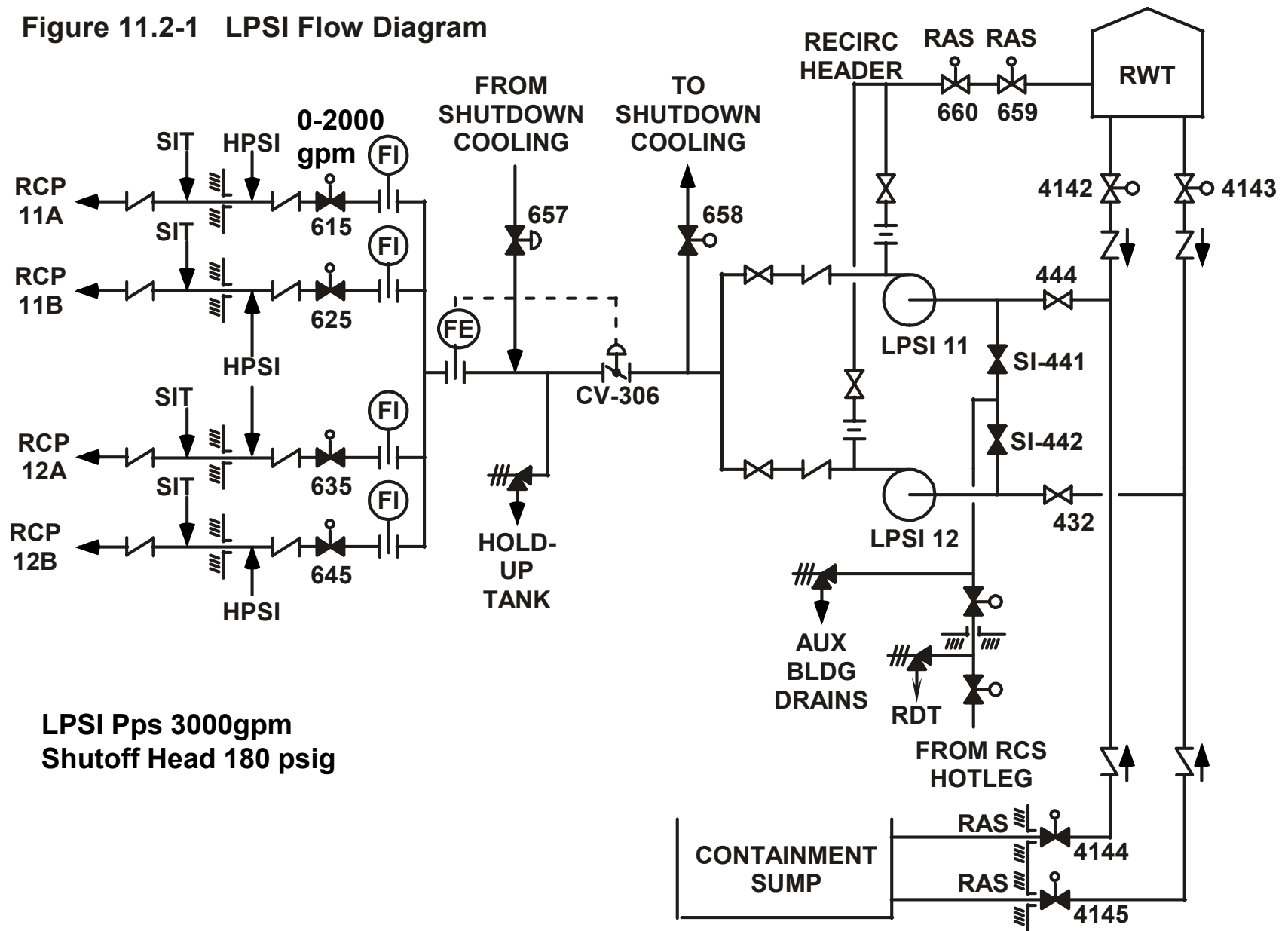
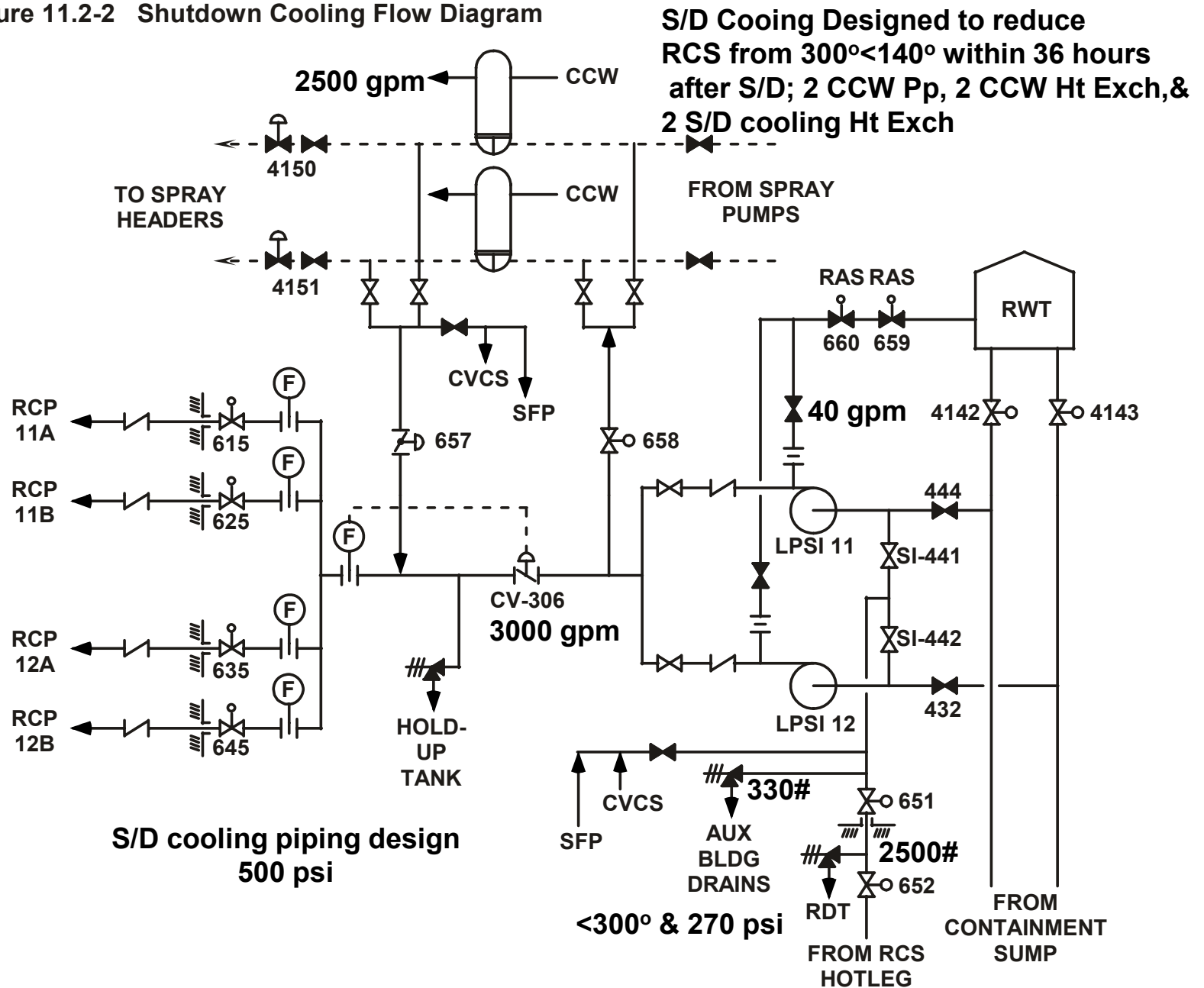


Figure 11.2-2 Shutdown Cooling Flow Diagram



The End