

**Enclosure 1**

Florida Power & Light Company Turkey Point Units 6 & 7  
Exploratory Well Project; Permit #0293962-001-UC  
Weekly Construction Summary #13 dated August 5, 2011

**Note**

Pages 36 through 46 were originally part  
of a single strip chart that has been  
segmented to 8.5 by 11 pages for  
processing

## WEEKLY CONSTRUCTION SUMMARY



**McNabb Hydrogeologic Consulting, Inc.**

601 Heritage Drive, Suite 110  
Jupiter, Florida 33458  
Phone: 561-891-0763  
Fax: 561-623-5469

August 5, 2011

MHCDEP-11-0340

Mr. Joseph May, P.G.  
Florida Department of Environmental Protection  
400 N. Congress Ave, Suite 200  
West Palm Beach, FL 33401

**RE: Florida Power & Light Company Turkey Point Units 6 & 7 Exploratory Well  
Project; Permit #0293962-001-UC  
Weekly Construction Summary #13**

Dear Mr. May:

This is the thirteenth weekly construction summary for the above referenced project. The reporting period for this weekly construction summary began at 7:00 AM, Thursday, July 28, 2011 and ended at 7:00 AM, Thursday, August 4, 2011. Consultant and drilling contractor daily reports were prepared for this reporting period. Copies of the consultant and drilling contractor daily construction logs are attached.

During the previous reporting period the drilling contractor backplugged the pilot hole over the interval from 1,655 feet below pad level (bpl) to 1,094 feet bpl and then reamed the backplugged pilot hole using a 42 ½-inch diameter reaming bit. The interval from the base of the 44-inch diameter casing to a depth of 1,394 feet bpl had been reamed by the end of the reporting period.

During this reporting period, the drilling contractor continued to ream the pilot hole from a depth of 1,394 feet bpl to a depth of 1,542 feet bpl. Deviation surveys were performed at 90-foot intervals during reaming. A copy of the deviation survey summary sheet is attached. Upon completion of reaming to a depth of 1,542 feet bpl, the borehole was conditioned and caliper and gamma ray geophysical logs were performed. A copy of the geophysical logs print is attached. The drilling contractor then installed the 34-inch diameter steel intermediate casing to a total depth of 1,535 feet bpl. A casing run summary sheet is attached. The drilling contractor then prepared to begin cementing the 34-inch casing in place by installing a 2-inch diameter tubing inside of the casing to a total depth of 1,532 feet bpl and sealing the well at the surface. The drilling contractor was waiting on the cementer to arrive on site at the end of the reporting period. The reamed hole was killed with a mixture of barite and bentonite during the reporting period. A daily kill material log providing a summary of daily kill material and kill volume is attached.

There was no coring, packer testing, or exploratory well development during this reporting period. There were no construction related issues during this reporting period.

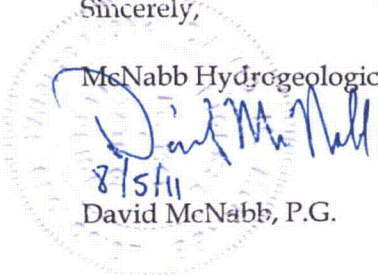
During the next reporting period, it is anticipated that the drilling contractor will cement the 34-inch diameter intermediate casing from the base of the casing to land surface. The drilling contractor will then begin drilling a pilot hole from the base of the 34-inch casing to a total depth of approximately 3,500 feet bpl.

In addition, sampling of the pad monitor wells began on April 21, 2011 and has been taking place on a weekly basis since the initial sampling. The pad monitor wells were most recently sampled on August 4, 2011. The most recent set of pad monitoring well sample results available is for samples collected on July 28, 2011. Sampling of the pad monitor wells around EW-1 will continue until drilling and testing of EW-1 has been completed. Copies of the pad monitor wells data summary sheets are attached.

Should you have any questions regarding the above weekly construction summary, please contact David McNabb at (561) 891-0763.

Sincerely,

McNabb Hydrogeologic Consulting, Inc.



David McNabb, P.G.

Attachments: Consultant Daily Construction Logs  
Drilling Contractor Daily Construction Logs  
Pad Monitor Well Summary Sheets  
Deviation Survey Summary Sheet  
34-Inch Diameter Casing Run Summary Sheet  
Daily Kill Material Log  
Geophysical Log

Cc: George Heuler/FDEP-Tallahassee  
Steve Anderson/SFWMD  
Matthew Raffenberg/FPL  
David Holtz/HCE

Joe Haberfeld/FDEP-Tallahassee  
Ron Reese/USGS  
David Paul/FGS



McNabb Hydrogeologic Consulting, Inc.



## Daily Construction Log

---

**Date:** July 28, 2011

**Project:** FPL Turkey Point EW

**Contractor:** Layne Christensen Company

**Starting Depth:** 1,394 feet bpl

**Weather Day:** Partly Cloudy, Hot

**Weather Night:** Partly Cloudy, Warm

**Activity:** Reaming

**FDEP UIC Permit #:** 0293962-001-UC

**Well No.:** EW-1

**Bit Diameter:** 42 1/2-inch

**Ending Depth:** 1,474 feet bpl

**Recorded By:** Sally Durall/Mark McNeal

### CONSTRUCTION ACTIVITIES

- 0700 The drilling contractor reamed the pilot hole to a depth of 1,394 feet below pad level (bpl) during the night shift.
- 0720 Reaming the pilot hole at a depth of 1,397 feet bpl.
- 0830 Reaming the pilot hole at a depth of 1,402 feet bpl.
- 1000 Reaming the pilot hole at a depth of 1,409 feet bpl.
- 1110 Reaming the pilot hole at a depth of 1,411 feet bpl.
- 1115 Florida Spectrum Environmental Services, Inc. is on site to sample the pad monitor wells.
- 1215 Reaming the pilot hole at a depth of 1,417 feet bpl.
- 1340 Reaming the pilot hole at a depth of 1,425 feet bpl.
- 1515 Reaming the pilot hole at a depth of 1,436 feet bpl.
- 1635 Reaming the pilot hole at a depth of 1,444 feet bpl.
- 1800 Reaming the pilot hole at a depth of 1,454 feet bpl.
- 1915 Reaming the pilot hole at a depth of 1,455 feet bpl.
- 2230 Reaming the pilot hole at a depth of 1,463 feet bpl.
- 0000 Reaming the pilot hole continues at a depth of 1,463 feet bpl. The formation is relatively hard at this depth.
- 0200 Reaming the pilot hole continues at a depth of 1,463 feet bpl.
- 0400 Reaming the pilot hole has advanced to a depth of 1,464 feet bpl.
- 0600 Reaming the pilot hole has advanced to a depth of 1,471 feet bpl.
- 0630 The kelly is down at 1,474 feet bpl and the drilling contractor is circulating the borehole clean in preparation of performing a deviation survey.





McNabb Hydrogeologic Consulting, Inc.



## Daily Construction Log

---

**Date:** July 29, 2011

**Project:** FPL Turkey Point EW

**Contractor:** Layne Christensen Company

**Starting Depth:** 1,474 feet bpl

**Weather Day:** Clear, Hot

**Weather Night:** Warm, Rain Trace

**Activity:** Reaming

**FDEP UIC Permit #:** 0293962-001-UC

**Well No.:** EW-1

**Bit Diameter:** 42 1/2-inch

**Ending Depth:** 1,538 feet bpl

**Recorded By:** Sally Durall/Mark McNeal

### CONSTRUCTION ACTIVITIES

- 0700 The drilling contractor reamed the pilot hole to a depth of 1,474 feet below pad level (bpl) during the night shift and currently preparing to perform a deviation survey at 1,440 feet bpl.
- 0705 Begin tripping in the hole with the survey tool to a depth of 1,440 feet bpl.
- 0725 Complete the deviation survey. The survey result is 0.3 degree.
- 0735 The drilling contractor makes a drill pipe connection and resumes drilling from a depth of 1,474 feet bpl.
- 0835 Reaming the pilot hole at a depth of 1,478 feet bpl.
- 0945 Reaming the pilot hole at a depth of 1,482 feet bpl.
- 1120 Reaming the pilot hole at a depth of 1,492 feet bpl.
- 1310 Reaming the pilot hole at a depth of 1,499 feet bpl.
- 1640 Reaming the pilot hole at a depth of 1,511 feet bpl.
- 1730 Reaming the pilot hole at a depth of 1,518 feet bpl.
- 1915 Reaming the pilot hole at a depth of 1,526 feet bpl.
- 2100 Reaming the pilot hole at a depth of 1,531 feet bpl.
- 22:30 Reaming the pilot hole at a depth of 1,532 feet bpl. The drilling contractor is making a wiper run to clean out the hole before drilling the last 8 feet.
- 0145 The drilling contractor has tripped out into the casing and tripped back to the bottom of the well. The hole had filled in to a depth of 1,523 feet and the drilling contractor is currently circulating loose material out from the bottom of the well before advancing the borehole.
- 0400 Reaming the pilot hole at a depth of 1,529 feet bpl. The drilling contractor continues to clean out the bottom of the well.
- 0530 The drilling contractor is currently circulating the borehole at 1,532 feet bpl.
- 0600 Reaming the pilot hole at a depth of 1,534 feet bpl.
- 0700 Reaming the pilot hole at a depth of 1,538 feet bpl.



McNabb Hydrogeologic Consulting, Inc.



## Daily Construction Log

---

**Date:** July 30, 2011

**Project:** FPL Turkey Point EW

**Contractor:** Layne Christensen Company

**Starting Depth:** 1,538 feet bpl

**Weather Day:** Ptly. Cldy, Hot, Brief Rain

**Weather Night:** Warm, Clear

**Activity:** Reaming/Borehole Conditioning

**FDEP UIC Permit #:** 0293962-001-UC

**Well No.:** EW-1

**Bit Diameter:** 42 1/2-inch

**Ending Depth:** 1,542 feet bpl

**Recorded By:** Eric Meyer/Mark McNeal

### CONSTRUCTION ACTIVITIES

- 0700 The drilling contractor continues reaming the pilot hole at a depth of 1,538 feet below pad level (bpl) and plans to terminate the reamed hole at a depth of 1,542 feet bpl. Once the final reamed-hole depth is reached, several wiper trips are planned to clean the borehole and condition the drilling fluids for geophysical logging and casing installation. The 34-inch casing is approved for installation at a depth of 1,535 feet bpl.
- 0800 Reaming the pilot hole at a depth of 1,541 feet bpl.
- 1030 The drilling contractor is working the drill pipe up and down to clean the borehole in the interval from approximately 1,473 feet to 1,542 feet bpl. Rock cuttings continue to settle out at the bottom of the borehole.
- 1120 The drilling contractor continues to rework the interval from approximately 1,473 feet to 1,542 feet bpl. The borehole will be conditioned to the bottom of the 44-inch casing.
- 1500 The drilling contractor continues borehole conditioning.
- 1700 The drilling contractor has been working the interval from 1,473 feet to 1,542 feet bpl.
- 1900 The drilling contractor is currently circulating the well at 1,542 feet to clean up the lower portion of the borehole.
- 2200 The drilling contractor is currently circulating the well at 1,541 feet bpl. A considerable amount of material continues to be produced at the bottom of the well.
- 0100 The drilling contractor is currently circulating the well at one foot off bottom (1,541 feet bpl). Pulling up 90 feet and returning to bottom results in about 3 to 5 feet of material that must be circulated out of the well.
- 0300 The drilling contractor is currently circulating the well at the total depth (1,542 feet bpl). On the last trip up 90 feet the drilling contractor was able to lower the bit to the bottom of the well, so it appears to be cleaning up. They are preparing for a wiper run up inside the casing and back down. A deviation survey for the reamed hole at a depth of 1,530 feet bpl will be performed after the next pilot hole has been drilled to a depth of approximately 1,550 feet bpl. This will allow



McNabb Hydrogeologic Consulting, Inc.



the deviation tool to hang freely from the wireline without interference from the drill bit or lower portion of the borehole assembly.

- 0500 The drilling contractor is tripping drill pipe up into casing for a wiper run.
- 0600 The drilling contractor continues to trip the bit to bottom. A connection is being made which places the bit at 1,113 feet bpl.
- 0700 The drill bit is positioned at 1,113 feet bpl. Rig maintenance is conducted while the borehole is circulated.





McNabb Hydrogeologic Consulting, Inc.



## Daily Construction Log

---

**Date:** July 31, 2011

**Project:** FPL Turkey Point EW

**Contractor:** Layne Christensen Company

**Starting Depth:** 1,542 feet bpl

**Weather Day:** Sunny, Hot

**Weather Night:** Warm, Clear

**Activity:** Borehole Conditioning

**FDEP UIC Permit #:** 0293962-001-UC

**Well No.:** EW-1

**Bit Diameter:** 42 1/2-inch

**Ending Depth:** 1,542 feet bpl

**Recorded By:** Eric Meyer/Mark McNeal

### CONSTRUCTION ACTIVITIES

- 0700 The drilling contractor continues performing a wiper trip to the total reamed-hole depth of 1,542 feet below pad level (bpl). The bit position is 1,113 feet bpl and the borehole fluids are being circulated while rig maintenance is performed. The drilling contractor continues to prepare the borehole for geophysical logging and the subsequent installation of the 34-inch casing at an approved depth of 1,535 feet bpl.
- 0900 The drilling contractor continues to trip the bit to the bottom of the reamed hole. The bit position is 1,289 feet bpl and the contractor prepares to make a connection. The drill pipe is "alive" and flows water under artesian pressure for each connection.
- 1100 The drilling contractor tagged the bottom of the reamed hole at 1,539 feet bpl and continues to circulate the bore hole. Once clear of cuttings, the drill pipe will be tripped out of the borehole to the bottom of the 44-inch casing, and then tripped in to bottom, without rotary or fluid circulation to assess whether the borehole will remain clean for geophysical logging and 34-inch casing installation.
- 1315 The drilling contractor has circulated to the bottom of the reamed-hole and is preparing to trip the drill bit to the bottom of the 44-inch casing.
- 1350 The drilling contractor is tripping the drill bit up to the bottom of the 44-inch casing.
- 1645 The drilling contractor has removed all but three stands (90 feet each) of drill pipe from the borehole so the drill bit is positioned at 304 feet bpl. The testing header was installed on the drill pipe to kill the artesian head of the well. The artesian head on the drill pipe is about 15 psi. Kill material (bentonite and barite mud) is being pumped into the drill pipe. The drilling contractor will also kill the 44-inch casing prior to removing the drill pipe and bit from the borehole in preparation for geophysical logging later tonight.
- 2100 The geophysical logging subcontractor has arrived at the site. The drilling contractor is mixing bentonite and barite in preparation of killing the well.
- 2300 The drilling contractor has lowered the artesian head on the well and the well is killed.





McNabb Hydrogeologic Consulting, Inc.



- 2315 The drill bit is being removed from the hole in preparation of logging the well.
- 0030 The drilling contractor is breaking the bit assembly from the drill pipe.
- 0200 The caliper and natural gamma ray log is complete for the reamed hole. Total depth logged is 1542 feet bpl.
- 0345 The drilling contractor is currently mixing more kill fluid to put down the well to make sure that the head is under control before beginning the casing run. The current water level is approximately 6 feet bpl.
- 0500 The drilling contractor begins adding more kill material to the well to lower the head.
- 0545 The head has been lowered to 21 feet bpl. They are done killing the well.
- 0700 The drilling contractor has removed the 42 1/2 inch bit from the borehole. The contractor will now mix additional kill material in preparation for the casing installation.



McNabb Hydrogeologic Consulting, Inc.



## Daily Construction Log

---

**Date:** August 1, 2011

**Project:** FPL Turkey Point EW

**Contractor:** Layne Christensen Company

**Starting Depth:** 1,542 feet bpl

**Weather Day:** Sunny, Hot

**Weather Night:** Ptly. Cloudy, Warm

**Activity:** 34-inch Casing Installation

**FDEP UIC Permit #:** 0293962-001-UC

**Well No.:** EW-1

**Bit Diameter:** 42 1/2-inch

**Ending Depth:** 1,542 feet bpl

**Recorded By:** Deborah Daigle/Sally Durall

### CONSTRUCTION ACTIVITIES

- 0700 The drilling contractor has removed the 42 1/2 inch bit from the borehole. The contractor will now mix additional kill material in preparation for the casing installation.
- 0900 The drilling contractor begins installation of the 34-inch diameter steel, 0.375-inch wall thickness intermediate casing to a depth of 1,535 feet bpl. Day shift welders are Todd King, Eddie McCannon, and Stephen Stone. The welder certifications for the welders were previously submitted by the drilling contractor and accepted. A total of 40 casing joints will be installed.
- 0915 The drilling contractor has installed the first casing joint.
- 1010 The drilling contractor has installed the second casing joint.
- 1050 The drilling contractor has installed the third casing joint.
- 1150 The drilling contractor has installed the fourth casing joint.
- 1245 The drilling contractor has installed the fifth casing joint.
- 1335 The drilling contractor has installed the sixth casing joint.
- 1420 The drilling contractor has installed the seventh casing joint.
- 1500 The static water level is 25.1 feet below the rig floor.
- 1520 The drilling contractor has installed the eighth casing joint.
- 1610 The drilling contractor has installed the ninth casing joint.
- 1700 The drilling contractor has installed the tenth casing joint.
- 1830 The drilling contractor has installed the eleventh casing joint.
- 1900 The night shift welders are Ellis Garrett Combs and Dave Langford. The welder certifications for the welders were previously submitted by the drilling contractor and accepted.
- 1950 The drilling contractor has installed the twelfth casing joint.
- 2040 The drilling contractor has installed the thirteenth casing joint.
- 2130 The drilling contractor has installed the fourteenth casing joint.
- 2245 The drilling contractor has installed the fifteenth casing joint.
- 2330 The drilling contractor has installed the sixteenth casing joint.
- 0010 The drilling contractor has installed the seventeenth casing joint.
- 0100 The drilling contractor has installed the eighteenth casing joint.



McNabb Hydrogeologic Consulting, Inc.



- 0150 The drilling contractor has installed the nineteenth casing joint.
- 0240 The drilling contractor has installed the twentieth casing joint.
- 0330 The drilling contractor has installed the twenty-first casing joint.
- 0415 The drilling contractor has installed the twenty-second casing joint.
- 0505 The drilling contractor has installed the twenty-third casing joint.
- 0550 The drilling contractor has installed the twenty-fourth casing joint.
- 0630 The drilling contractor has installed the twenty-fifth casing joint.
- 0700 The drilling contractor is welding the twenty-sixth casing joint.





McNabb Hydrogeologic Consulting, Inc.



## Daily Construction Log

---

**Date:** August 2, 2011

**Project:** FPL Turkey Point EW

**Contractor:** Layne Christensen Company

**Starting Depth:** 1,542 feet bpl

**Weather Day:** Partly Cloudy, Hot

**Weather Night:** Cloudy, Hot

**Activity:** 34-inch Casing Installation

**FDEP UIC Permit #:** 0293962-001-UC

**Well No.:** EW-1

**Bit Diameter:** not applicable

**Ending Depth:** 1,542 feet bpl

**Recorded By:** Deborah Daigle/Sally Durall

### CONSTRUCTION ACTIVITIES

- 0700 The drilling contractor is continuing with the installation of the 34-inch diameter casing and is currently welding the twenty-sixth casing joint. Day shift welders are Todd King, Eddie McCannon, and Stephen Stone. The welder certifications for the welders were previously submitted by the drilling contractor and accepted.
- 0712 The drilling contractor has installed the twenty-sixth casing joint.
- 0807 The drilling contractor has installed the twenty-seventh casing joint.
- 0944 The drilling contractor has installed the twenty-eighth casing joint.
- 1027 The drilling contractor has installed the twenty-ninth casing joint.
- 1112 The drilling contractor has installed the thirtieth casing joint.
- 1208 The drilling contractor has installed the thirty-first casing joint.
- 1310 The drilling contractor has installed the thirty-second casing joint.
- 1405 The drilling contractor has installed the thirty-third casing joint.
- 1430 The drilling contractor has temporarily shut down due to lightning.
- 1600 The drilling contractor has resumed installation of the 34-inch casing.
- 1700 The drilling contractor has installed the thirty-fourth casing joint.
- 1742 The drilling contractor has installed the thirty-fifth casing joint.
- 1830 The drilling contractor has installed the thirty-sixth casing joint.
- 1900 The night shift welders are Ellis Garrett Combs and Dave Langford. The welder certifications for the welders were previously submitted by the drilling contractor and accepted.
- 1945 The drilling contractor has installed the thirty-seventh casing joint.
- 2120 The drilling contractor has installed the thirty-eighth casing joint.
- 2215 The drilling contractor has installed the thirty-ninth casing joint.
- 2355 The drilling contractor has installed the fortieth casing joint. The welders begin to weld on the annular plates.
- 0240 The drilling contractor begins to trip inside the 34-inch diameter casing with cement tubing in preparation for cementing.
- 0410 The base of the cement tubing is at a depth of 1,532 feet bpl.





McNabb Hydrogeologic Consulting, Inc.



0700 The drilling contractor is awaiting the arrival of the cementer to begin cementing the casing. The cementer is not expected for a day or two due to the cementer being used at a different site.



McNabb Hydrogeologic Consulting, Inc.



## Daily Construction Log

---

**Date:** August 3, 2011

**Project:** FPL Turkey Point EW

**Contractor:** Layne Christensen Company

**Starting Depth:** 1,542 feet bpl

**Weather Day:** Ptly. Cloudy, Hot

**Weather Night:** Cloudy, Rain, Hot

**Activity:** Rig Maintenance

**FDEP UIC Permit #:** 0293962-001-UC

**Well No.:** EW-1

**Bit Diameter:** not applicable

**Ending Depth:** 1,542 feet bpl

**Recorded By:** Deborah Daigle/Sally Durall

### CONSTRUCTION ACTIVITIES

- 0700 The base of the cement tubing is at a depth of 1,532 feet bpl. The drilling contractor is waiting on the arrival of the cementer to begin cementing the 34-inch casing in place. The drilling contractor is performing miscellaneous maintenance.
- 1000 The drilling contractor continues to perform miscellaneous maintenance activities and site organization.
- 1300 The drilling contractor continues to perform miscellaneous maintenance activities and site organization.
- 1600 The drilling contractor continues to perform miscellaneous maintenance activities and site organization.
- 1730 The drilling contractor continues to perform miscellaneous maintenance activities and site organization. The contractor has indicated that the cementer will not be on site today or during the night shift.
- 0000 The drilling contractor continues to perform miscellaneous maintenance activities and site organization.
- 0600 The drilling contractor continues to perform miscellaneous maintenance activities and site organization.
- 0700 The drilling contractor continues to perform miscellaneous maintenance activities and site organization.





## LAYNE CHRISTENSEN COMPANY - DRILLING SHIFT REPORT

CLIENT

FPL

Proposed Turkey Point Units 6 and 7  
Docket Nos. 52-040 and 52-041

DATE

7/25/11

JOB #

11771

JOBSITE NAME

EWI

L-2011-353 Enclosure 1 Page 16 of 46

JOBSITE LOCATION

TE

## PERSONNEL EMPLOYED TODAY

Crew Assignment	Employee - Full Name	Per Diem? (X)	Onsite Hours	Offsite Hours	Total Hours
DALLER	George Nage	X	12		12
MR	Milce Rambeez	X	12		12
MP	marko Peric Cesar	X	12		12
AD	Audrey Popov	X	12		12

## MATERIALS USED TODAY

Quantity	Description
	1 <sup>st</sup> Safety Meeting: Accident Reporting Procedures
	2 <sup>nd</sup> Safety Meeting: Reporting Accidents and Incidents when Occurs

## EQUIPMENT EMPLOYED TODAY

Description	Unit #	Status
Working	WK	Mobilization
Standby	SB	Demobilization
Down in Shop	DS	Available in Yard
Down on Site	DN	Available on Job

## TIME OF ACTIVITY BY ITEM #

From	To	Cycle One	Item #
		AM PM	
		AM PM	
		AM PM	
		AM PM	
		AM PM	
		AM PM	
		AM PM	
		AM PM	
		AM PM	
		AM PM	
		AM PM	
		AM PM	
		AM PM	
		AM PM	
		AM PM	
		AM PM	
		AM PM	
		AM PM	

## COMMENTS - EVENTS - CONDITIONS - CHANGES - OTHER INFORMATION

Resume drilling w/ 4 1/2" Bit from 1455 bbl to 1457 bbl  
Lost Circulation pull up 45 FT regain circulation  
Now 5 Cords in dump truck. Resume drilling from  
1459 bbl to 1474 bbl w/ 4 1/2" bit. Circulate for 1 hour  
then surge pipe to clean up hole, pump water back down hole

## DAILY ACCOUNTING OF ACTIVITIES BY ITEM #

Item #	Cost Code	Labor Activity	Hours
1	10000	Short Duration Job	
2	11100	Onsite Mob/Demob	
3	11150	Job Preparation	
4	11200	Safety Meeting	
5	0005	Training - Overhead	
6	0006	Shop - Overhead	
7	0007	Maintenance - Overhead	
8	11250	Training - Job Chargeable	
9	11300	Site Clean up	
10	11350	Instal Sound Walls	
11	11400	Instal Deco Pad	
12	11450	Instal Surface Casing	
13	11500	Instal Roadway & Dril Pad	
14	12050	Test Hole Drilling	
15	12100	Geophysical Logging & Other Testing	
16	12150	Aquifer Zone Testing	
17	12200	Borehole Abandonment	
18	13050	Production Well Installation	
19	13100	Instal Conductor Pipe	
20	13150	Drill Pilot Hole	
21	13200	Geophysical Logging & Other Testing	
22	13250	Aquifer Zone Testing	
23	13300	Borehole Abandonment/ Cement Plugs	
24	13350	Reaming	
25	13400	Under Reaming	
26	13450	Instal Casing	
27	13500	Instal Screen	
28	13550	Gravel Pack The Well	
29	13600	Instal Annular Seal	
30	13650	Water Watching	
31	14050	Well Development Air Lift and Swab	
32	14100	Disposal of Fluids & Cuttings	
33	14150	Furish & Instal Test Pump and Discharge	
34	14200	Development Pumping	
35	14250	Test Pumping	
36	14300	Disinfection and Chlorination	
37	19050	Offsite Activities Mob/Demob	
38	19100	Shop	
39	19150	Administration	
40	19550	Other Activities Standby	
41	19600	Fishing for Lost/Broken Tooling	
42	19650	Change Order Activities	
43	80000	Equipment Repairs	
44	90170	Damages	
45	90200	Job Superintendent	
		Lunch	
		TOTAL HOURS	

Client's Signature

Client's Signature

PAYROLL

Supervisor's Signature

Date









## LAYNE CHRISTENSEN COMPANY - DRILLING SHIFT REPORT

CLIENT FPLProposed Turkey Point Units 6 and 7  
Docket Nos. 52-040 and 52-041  
L-2011-353 Enclosure 1 Page 19 of 46

DATE

7/30/11  
SAT DAYS

JOB #

11771

JOBSITE NAME

EWI

JOBSITE LOCATION

T.P.

## PERSONNEL EMPLOYED TODAY

Crew Assignment	Employee - Full Name	Per Diem? (X)	Onsite Hours	Offsite Hours	Total Hours
<u>DRILL</u>	<u>Danny Keeley</u>	<u>X</u>	<u>12</u>		<u>12</u>
<u>R</u>	<u>James Payne</u>	<u>X</u>	<u>12</u>		<u>12</u>
<u>I.U.</u>	<u>Isaac Vaca</u>	<u>X</u>	<u>12</u>		<u>12</u>
<u>RKF</u>	<u>Bob Feather</u>	<u>X</u>	<u>12</u>		<u>12</u>
<u>MP</u>	<u>Marka Perez Cesar</u>	<u>X</u>	<u>12</u>		<u>12</u>

## EQUIPMENT DEPLOYED TODAY

Description	Unit #	Status
Working	WK	Mobilization
Standby	SB	Demobilization
Down in Shop	DS	Available in Yard
Down on Site	DN	Available on Job

## DAILY ACCOUNTING OF ACTIVITIES BY ITEM #

Item #	Cost Code	Labor Activity	Hours
1	10000	Short Duration Job	
2	11100	Onsite Mob/Demob	
3	11150	Job Preparation	
4	11200	Safety Meeting	
5	0005	Training - Overhead	
6	0006	Shop - Overhead	
7	0007	Maintenance - Overhead	
8	11250	Training - Job Chargeable	
9	11300	Site Clean up	
10	11350	Install Sound Walls	
11	11400	Install Decon Pad	
12	11450	Install Surface Casing	
13	11500	Install Roadway & Drill Pad	
14	12050	Test Hole Drilling	
15	12100	Geophysical Logging & Other Testing	
16	12150	Aquifer Zone Testing	
17	12200	Borehole Abandonment	
18	13050	Production Well Installation	
19	13100	Install Conductor Pipe	
20	13150	Drill Pilot Hole	
21	13200	Geophysical Logging & Other Testing	
22	13250	Aquifer Zone Testing	
23	13300	Borehole Abandonment/Cement Plugs	
24	13350	Reaming	
25	13400	Under Reaming	
26	13450	Install Casing	
27	13500	Install Screen	
28	13550	Gravel Pack The Well	
29	13600	Install Annular Seal	
30	13650	Water Watching	
31	14050	Well Development Air Lift and Swab	
32	14100	Disposal of Fluids & Cuttings	
33	14150	Furnish & Install Test Pump and Discharge	
34	14200	Development Pumping	
35	14250	Test Pumping	
36	14300	Disinfection and Chlorination	
37	19050	Offsite Activities Mob/Demob	
38	19100	Shop	
39	19150	Administration	
40	19550	Other Activities Standby	
41	19600	Fishing for Lost/Broken Tooling	
42	19650	Change Order Activities	
43	88000	Equipment Repairs	
44	90170	Damages	
45	90200	Job Superintendent	
		Lunch	
		TOTAL HOURS	

## MATERIALS USED TODAY

Quantity	Description
	<u>SAFETY MEETING</u>
<u>#1</u>	<u>LOOKING OUT FOR EACH OTHER</u>
<u>#2</u>	<u>LOOKING AT THE BIG PICTURE</u>

## TIME OF ACTIVITY BY ITEM #

From	To	Circle One	Item #
		AM PM	
		AM PM	
		AM PM	
		AM PM	
		AM PM	
		AM PM	
		AM PM	
		AM PM	
		AM PM	
		AM PM	
		AM PM	
		AM PM	
		AM PM	
		AM PM	
		AM PM	
		AM PM	
		AM PM	
		AM PM	
		AM PM	
		AM PM	

## COMMENTS - EVENTS - CONDITIONS - CHANGES - OTHER INFORMATION

<u>CONTINUE REAMING 15 37' BPL TO 15 42' BPL + @ 8.8 PM</u>
<u>CLEAN / REAM HOLE PROBLEMS 14 80' BPL TO 15 15 BPL</u>
<u>HAUL TANKS (5) AND DUMP TRUCKS (14)</u>
<u>INSTALL MANHOLE FOR WATER RUN RIG FLOOR</u>
<u>REPAIR SSOT FENCE</u>



## LAYNE CHRISTENSEN COMPANY - DRILLING SHIFT REPORT

CLIENT FPL Proposed Turkey Point Units 6 and 7  
Docket Nos. 52-040 and 52-041  
JOB SITE NAME EW-1 L-2011-353 Enclosure 1 Page 20 of 46

DATE 7/30/2011  
Sat. Night

JOB # 11771  
JOB SITE LOCATION T.P.

## PERSONNEL EMPLOYED TODAY

Crew Assignment	Employee - Full Name	Per Diem? (X)	Onsite Hours	Offsite Hours	Total Hours
Driller	Basrt Gulomov	X	12		12
VI	Vlad Ishimov	X	12		12
IP	Igor Popov	X	12		12
JL	Joan Lopez	X	12		12

## MATERIALS USED TODAY

Quantity	Description
#1	Safety Meeting (Eye protection)
#2	Safety Meeting (Fall Protection)

## EQUIPMENT DEPLOYED TODAY

Description	Unit #	Status
Working	WK	Mobilization MB
Standby	SB	Demobilization DM
Down in Shop	DS	Available in Yard AY
Down on Site	DN	Available on Job AV

## TIME OF ACTIVITY BY ITEM #

From	To	Circle One	Item #
		AM PM	
		AM PM	
		AM PM	
		AM PM	
		AM PM	
		AM PM	
		AM PM	
		AM PM	
		AM PM	
		AM PM	
		AM PM	
		AM PM	
		AM PM	
		AM PM	
		AM PM	
		AM PM	
		AM PM	

## COMMENTS - EVENTS - CONDITIONS - CHANGES - OTHER INFORMATION

Circulate the bottom, Working 1472 ft BPL to 1542 BPL. Work this depth five times going up & down. Torquing, lose air pressure, 8' to 5' filled up the bottom of the hole. Sit on the bottom circulate for 1 hour, TOH until inside the casing. Kill DP, 6" kill. TIH and circulate each stand individually going to the bottom.

## DAILY ACCOUNTING OF ACTIVITIES BY ITEM #

Item #	Cost Code	Labor Activity	Hours
1	10000	Short Duration Job	
2	11100	Onsite Mob/Demob	
3	11150	Job Preparation	
4	11200	Safety Meeting	
5	0005	Training - Overhead	
6	0006	Shop - Overhead	
7	0007	Maintenance - Overhead	
8	11250	Training - Job Chargeable	
9	11300	Site Clean up	
10	11350	Install Sound Walls	
11	11400	Install Decon Pad	
12	11450	Install Surface Casing	
13	11500	Install Roadway & Drill Pad	
14	12050	Test Hole Drilling	
15	12100	Geophysical Logging & Other Testing	
16	12150	Aquifer Zone Testing	
17	12200	Borehole Abandonment	
18	13050	Production Well Installation	
19	13100	Install Conductor Pipe	
20	13150	Drill Pilot Hole	
21	13200	Geophysical Logging & Other Testing	
22	13250	Aquifer Zone Testing	
23	13300	Borehole Abandonment/Cement Plugs	
24	13350	Reaming	
25	13400	Under Reaming	
26	13450	Install Casing	
27	13500	Install Screen	
28	13550	Gravel Pack The Well	
29	13600	Install Annular Seal	
30	13650	Water Watching	
31	14050	Well Development Air Lift and Swab	
32	14100	Disposal of Fluids & Cuttings	
33	14150	Furnish & Install Test Pump and Discharge	
34	14200	Development Pumping	
35	14250	Test Pumping	
36	14300	Disinfection and Chlorination	
37	19050	Offsite Activities Mob/Demob	
38	19100	Shop	
39	19150	Administration	
40	19550	Other Activities Standby	
41	19600	Fishing for Lost/Broken Tooling	
42	19650	Change Order Activities	
43	88000	Equipment Repairs	
44	90170	Damages	
45	90200	Job Superintendent	
		Lunch	
		TOTAL HOURS	









## LAYNE CHRISTENSEN COMPANY - DRILLING SHIFT REPORT

CLIENT FPL Proposed Turkey Point Units 6 and 7  
 Docket Nos. 52-040 and 52-041  
 JOBSITE NAME EW L-2044-353-Enclosure 1 Page 23 of 46  
 PERSONNEL EMPLOYED TODAY

DATE 8/1/11  
MON, DAYS

JOB # 11771  
 JOBSITE LOCATION Turkey Point  
 DRAINAGE AREA / FLOODING INFORMATION

Crew Assignment	Employee - Full Name	Per Diem? (X)	Onsite Hours	Offsite Hours	Total Hours
Driller	George Hage	X	12		12
MP	Mike Ramirez	X	12		12
AD	James Payne	X	12		12
MP	Marko Pover Cesar	X	12		12
AD	Andrew Popov	X	12		12

Description	Unit #	Status
Working	WK	Mobilization
Standby	SB	Demobilization
Down in Shop	DS	Available in Yard
Down on Site	DN	Available on Job

Item #	Log Code	Labor Activity	Hours
1	10000	Short Duration Job	
2	11100	Onsite Mobilization	
3	11150	Job Preparation	
4	11200	Safety Meeting	
5	0005	Lifting - Overhead	
6	0006	Shop - Overhead	
7	0007	Maintenance - Overhead	
8	11250	Lifting - Job Chargeable	
9	11300	Clean up	
10	11350	Install Sound Walls	
11	11400	Install Decon Pad	
12	11450	Install Surface Casing	
13	11500	Install Roadway & Ditch Pad	
14	12050	Test Hole Drilling	
15	12100	Geophysical Logging & Other Testing	
16	12150	Aquifer Zone Testing	
17	12200	Storehole Abandonment	
18	13050	Production Well Installation	
19	13100	Install Conductor Pipe	
20	13150	Use of Hole	
21	13200	Geophysical Logging & Other Testing	
22	13250	Aquifer Zone Testing	
23	13300	Storehole Abandonment/Cement Plug	
24	13350	Reaming	
25	13400	Under Reaming	
26	13450	Annular Casing	
27	13500	Annular Screen	
28	13550	Travel Pack The Well	
29	13600	Install Annular Seal	
30	13650	Water Washing	
31	14050	Well Development Air Lift and Swab	
32	14100	Disposal of Fluids & Casing	
33	14150	Final Install Test Pump and Discharge	
34	14200	Development Pumping	
35	14250	Test Pumping	
36	14300	Disinfection and Chlorination	
37	19050	Offsite Activities Mobilization	
38	19100	Shop	
39	19150	Administration	
40	19550	Other Activities Standby	
41	19600	Waiting for Lost/Broken Tooling	
42	19650	Change Order Activities	
43	88000	Equipment Repairs	
44	90170	Damages	
45	90200	Job Superintendent	
		Lunch	
		TOTAL HOURS	

## MATERIALS USED TODAY

Quantity	Description
	1st Safety Meeting: Running Casing
	2nd Safety Meeting: Flash burn welders
	Time In Time Out Name
EDMAC	0700 1900 1900 Eddie Mac
SS	0700 1900 1900 Stephen Stowe
TKG	0700 1900 1900 Todd King

## TIME OF ACTIVITY BY ITEM #

From	To	Old One	Item #
		AM PM	
		AM PM	
		AM PM	
		AM PM	
		AM PM	
		AM PM	
		AM PM	
		AM PM	
		AM PM	
		AM PM	
		AM PM	
		AM PM	
		AM PM	
		AM PM	
		AM PM	
		AM PM	
		AM PM	
		AM PM	

## COMMENTS - EVENTS - CONDITIONS - CHANGES - OTHER INFORMATION

0700 Lay down 5 42 weights w/ collars and 4 1/2 bit.  
 Rig up to run casing start to run 34" casing run in 10  
 w/ it hanging shut down for rain. Had 12 pump truck out  
 of the slurry pit.

Installer's Signature

Date

Client's Signature

PAYROLL

Date

Supervisor's Signature

Date

**LAYNE CHRISTENSEN COMPANY - DRILLING SHIFT REPORT**

**CLIENT**

Proposed Turkey Point Units 6 and 7  
Docket Nos. 52-040 and 52-041  
L-2011-353 Enclosure 1 Page 24 of 46

DATE \_\_\_\_\_

8-1-74  
MON. NIGHT.

190112-135-0000

1177  
T. P.

## PERSONNEL EMPLOYED TODAY

Crew Assignment	Employee - Full Name	Per Diem? (X)	Onsite Hours	Offsite Hours	Total Hours
DRILLER	BOSIZ Cuiomar	X	12		12
VE	VLAN TSHIMAY	X	12		12
IG	IGOR POPON	X	12		12
SL	JOAN LOPEZ	X	12		12

### MATERIALS USED TODAY

Quantity	Description
	SAFETY MTC:
①	RUN CASING:
②	FLASH BURN:
	IN.                      OUST
	ELLIS COMBS:      19:00 - 7:00
	DAVE LANGFORD:   19:00 - 7:00.

**CONFIDENTIAL SERVICE SOCIETY**

[illegible]

## TIME OF ACTIVITY BY ITEM #

[illegible]

## DAILY ACCOUNTING OF ACTIVITIES BY ITEM #

Item #	Cost Code	Labor Activity	Hours
1	10000	Short Duration Job	
2	11100	Small Mob/Demob	
3	11150	Job Preparation	
4	11200	Safety Meeting	
5	0005	Training - Overhead	
6	0006	Shop - Overhead	
7	0007	Administration Overhead	
8	11250	Training - Job Chargeable	
9	11300	Site Clean up	
10	11350	Install Sound Walls	
11	11400	Install Decon Pad	
12	11450	Install Surface Coating	
13	11500	Install Roadway & Drive Pad	
14	12050	Test Hole Drilling	
15	12100	Geophysical Logging & Other Testing	
16	12150	Auger for Zone Testing	
17	12200	Abandonment	
18	13050	Production Well Installation	
19	14100	Install Conductor Pipe	
20	14150	Install Bit at Hd of	
21	14200	Geophysical Logging & Other Testing	
22	14250	Auger for Zone Testing	
23	14300	Abandonment/Comment Hugs	
24	14350	Reaming	
25	14400	Under Reaming	
26	14450	Install Casing	
27	14500	Install Screen	
28	14550	Gravel Pack to Well	
29	14600	Install Annular Seal	
30	14650	Water Washing	
31	14050	Well Development Air Lift and Swab	
32	14100	Disposal of Fluids & Cuffins	
33	14150	Furnish & Install Test Pump and Discharge	
34	14200	Development Pumping	
35	14250	Test Pumping	
36	14300	Installation and Completion	
37	19050	Onsite Activities Mob/Demob	
38	19100	Shop	
39	19150	Administration	
40	19550	Other Activities Standby	
41	19600	Distilling for Lost/Broken Tooling	
42	19650	Change Order Activities	
43	88000	Equipment Repairs	
44	90170	Damages	
45	90200	Job Superintendent	
		Launch	
TOTAL HOURS			

## COMMENTS - EVENTS - CONDITIONS - CHANGES - OTHER INFORMATION

RUN 34" CASING; FROM - 11 - TO - 25  
PUMP 6" KILL.

**Client's Signature**

## PAYROLL

Supervisor's Signature \_\_\_\_\_

**5412**

**LAYNE CHRISTENSEN COMPANY - DRILLING SHIFT REPORT**

**CLIENT**

12

Proposed Turkey Point Units 6 and 7  
~~Docket Nos. 52-040 and 52-041~~  
L-2011-353 Enclosure 1 Page 25 of 46

• 1994

8/2/2011

1084

1177

**JOB SITE NAME**

EWI

L-2011-353 Enclosure 1 Page 25 of 46

The day shift

**JOB SITE LOCATION**

Turkey Point

**PERSONNEL EMPLOYED TODAY**

Crew Assignment	Employee - Full Name	Per Diem? (X)	Onsite Hours	Offsite Hours	Total Hours
Driller	George Haga	X	12		12
MR	Mike Ramirez	X	12		12
MP	Marko Pizz Cesar	X	12		12
AP	Andrey Popov	X	12		12

## EQUIPMENT DEPLOYED TODAY

[illegible]

**DARS ACCOUNTING OF ACTIVITIES BY STATE**

Item #	Cost Code	Labor Activity	Hours
1	10000	Short Duration Job	
2	11100	Finite Mob/Demob	
3	11150	Job Preparation	
4	11200	Safety Meeting	
5	0005	Training - Overhead	
6	0006	Shop - Overhead	
7	0007	Maintenance - Overhead	
8	11250	Training - Job Chargeable	
9	11300	Site Clean up	
10	11350	Install Sound Walls	
11	11400	Install Decon Pad	
12	11450	Install Surface Casing	
13	11500	Install Roadway & Drive Pad	
14	20500	Test Hole Drilling	
15	41100	Geophysical Logging & Other Testing	
16	70150	Aquifer Zone Testing	
17	12200	Perchote Abandonment	
18	12050	Production Well Installation	
19	11100	Install Conductor Pipe	
20	11150	Install Mot Hole	
21	11200	Geophysical Logging & Other Testing	
22	11250	Aquifer Zone Testing	
23	11300	Perchote Abandonment/Convent Plugs	
24	11350	Reaming	
25	11400	Under Reaming	
26	11450	Install Casing	
27	11500	Install Screen	
28	11550	Gravel Pack The Well	
29	11600	Install Annular Seal	
30	13650	Water Watching	
31	14050	Well Development Air Lift and Swab	
32	14100	Disposal of Fluids & Cuttings	
33	14150	Furnish & Install Test Pump and Discharge	
34	14200	Development Pumping	
35	14250	Test Pumping	
36	14300	Disinfection and Chlorination	
37	19050	Other Activities Mob/Demob	
38	19100	Stop	
39	19150	Administration	
40	19550	Other Activities Standby	
41	19600	Fishing for Lost/Broken Tooling	
42	19650	Change Order Activities	
43	90000	Equipment Repairs	
44	90170	Damages	
45	90200	Job Superintendent	
		Lunch	
		<b>TOTAL HOURS</b>	

### MATERIALS USED TODAY

Quantity	Description
	1st Safety Meeting : Accident Reporting procedures.
	2nd Safety Meeting : House Keeping
	TIME IN TIME OUT
EMC	ED McCannan - 0600 2200
<del>1/1</del>	Todd King - 0600 2200
SS	Stephen Snow - 0600 2200
	- 1430 shut down for lightning.
	- 1600 Resume work from lightning break

### TIME OF ACTIVITY BY SYSTEM

[illegible]

## COMMENTS - EVENTS - CONDITIONS - CHANGES - OTHER INFORMATION

Resume running 34 inch casing joint #25 @ 0722  
Conducted Safety Meeting w/ Mike Thibodeau on accident Reporting  
Procedures. Received 1 Load of Cement topped silo  
3 runs down from the top. Shut down for lightning @ 1430  
Return to work @ 1630. added 3 inches of fill to Annulus

**Installer's Signature**

**द्वि**

**Cheng's Signature**

## PAYROLL

10

## ΣΥΝΤΑΚΤΙΚΑ ΣΗΜΕΙΑ

सं०

**LAYNE CHRISTENSEN COMPANY-DRILLING SHIFT REPORT**

**CLIENT**

F. P. L.

### Proposed Turkey Point Units 6 and 7

DATE \_\_\_\_\_

8-2-2011

08.

11-771

**JOB SITE NAME**

Eu - 1

Docket Nos. 52-040 and 52-041

~~L-2011-353-Enclosure 1 Page 26 of 46~~

# THE NIGHT

EDUCATION

T. D.

**PERSONNEL EMPLOYED TODAY**

Crew Assignment	Employee - Full Name	Per Diem? (X)	Onsite Hours	Offsite Hours	Total Hours
<del>DRILLER</del>	<del>BOSIL GUMONOV</del>	<del>X</del>	<del>13</del>		<del>13</del>
<del>VL</del>	<del>MAD ISHIMOV</del>	<del>X</del>	<del>13</del>		<del>13</del>
<del>SL</del>	<del>JOAN LOPEZ</del>	<del>X</del>	<del>13</del>		<del>13</del>
<del>TG</del>	<del>IGOR POPOV</del>	<del>X</del>	<del>13</del>		<del>13</del>

## MATERIALS USED TODAY

Quantity	Description
	SAFETY MTG:
①	PPE
②	EYE PROTECTION:
	ELLIS COMBS: 7:00pm - 3:00AM
	DAVID LANGFORD: 7:00pm - 3:00AM

## EQUIPMENT DEPLOYED TODAY

[illegible]

### TIME OF ACTIVITY BY ITEM #

[illegible]

### DAILY ACCOUNTING OF ACTIVITIES BY ITEM #

Item #	Cost Code	Labor Activity	Hours
1	10000	Job Duration Job	
2	11100	Indst Mob/Demob	
3	11150	Job Preparation	
4	11200	Safety Meeting	
5	0005	Training - Overhead	
6	0006	Shop - Overhead	
7	0007	Maintenance - Overhead	
8	11250	Training Job Chargeable	
9	11300	Site Clean up	
10	11350	Install Sound Walls	
11	11400	Install Decon Pad	
12	11450	Install Surface Casing	
13	11500	Install Roadway & Drill Pad	
14	12050	Test Hole Drilling	
15	12100	Geophysical Logging & Other Testing	
16	12150	Fluid for Zone Testing	
17	12200	Borehole Abandonment	
18	13050	Production Well Installation	
19	13100	Install Conductor Pipe	
20	13150	Install Plug Hole	
21	13200	Geophysical Logging & Other Testing	
22	13250	Fluid for Zone Testing	
23	13300	Borehole Abandonment/Cement Plugs	
24	13350	Reaming	
25	13400	Under Reaming	
26	13450	Install Casing	
27	13500	Install Screen	
28	13550	Gravel Pack The Well	
29	13600	Install Annular Seal	
30	13650	Water Watching	
31	14050	Well Development Air Lift and Swab	
32	14100	Disposal of Fluids & Cuttings	
33	14150	Furnish & Install Test Pump and Discharge	
34	14200	Development Pumping	
35	14250	Test Pumping	
36	14300	Gravel Pack and Cementation	
37	19050	Off-site Activities Mob/Demob	
38	19100	Shop	
39	19150	Administration	
40	19550	Other Activities Standby	
41	19600	Reaming for Lost/Broken Tooling	
42	19650	Change Order Activities	
43	90200	Equipment Repairs	
44	90170	Damages	
45	90200	Job Support/endent	
		Lunch	
		TOTAL HOURS	

## COMMENTS - EVENTS - CONDITIONS - CHANGES - OTHER INFORMATION

RUN CASING 34" FROM /- 35- TO /- 40.  
T.I.H CEMENT tubing 15.35' BPL, waiting for the  
Cementer, Clean the Floor, Change House, Drill  
house House Keeping.

## Julius's Summary

8-2-44

Client's Signature

## PAYROLL

Data :



**CLIENT**

FPL

~~Proposed Turkey Point Units 6 and 7~~

Docket Nos. 52-040 and 52-041

~~L-2011-353 Enclosure 1 Page 27 of 46~~

DATE \_\_\_\_\_

8/3/2011

Wednesday Day

**JOB #**

11771

### ON-SITE LOCATION

Turkey Point

## PERSONNEL EMPLOYED TODAY

Crew Assignment	Employee - Full Name	Per Diem? (X)	Onsite Hours	Offsite Hours	Total Hours
Driller	George Haga	X	12		12
MP	Mike Ramirez	X	12		12
MP	Marko Perez Cesar	X	12		12
AP	Andrey Popov	X	12		12

CONTINUED FROM PAGE 10

Description		Unit #	Status
Working	DM	Mobilization	MB
Standby	SB	Demobilization	DM
Down on Site	OS	Availability in Yard	AV
Down on Site	DM	Availability on Job	AV

## UNIT ACCOUNTING OF ACTIVITIES BY DIVISION

Item #	Cost Code	Labor Activity	Hours
1	10000	Short Duration Job	
2	11100	Install Mob/Demob	
3	11150	Job Preparation	
4	11200	Safety Meeting	
5	0005	Training - Overhead	
6	0005	Shop - Overhead	
7	0007	Maintenance - Overhead	
8	11250	Training - Job Chargeable	
9	11300	Site Clean up	
10	11350	Install Sound Walls	
11	11400	Install Decon Pad	
12	11450	Install Surface Casing	
13	11500	Install Roadway & Deck Pad	
14	12050	Test Hole Drilling	
15	12100	Geophysical Logging & Other Testing	
16	12150	Aquifer Zone Testing	
17	12200	Barrier Abandonment	
18	13050	Production Well Installation	
19	13100	Install Conductor Pipe	
20	13150	Drill Blind Hole	
21	13200	Geophysical Logging & Other Testing	
22	13250	Aquifer Zone Testing	
23	13300	Borehole Abandonment/Cement Plugs	
24	13350	Reaming	
25	13400	Under Reaming	
26	13450	Install Casing	
27	13500	Install Screen	
28	13550	Gravel Pack The Well	
29	13600	Install Annular Seal	
30	13650	Water Watching	
31	14050	Well Development Air Lift and Swab	
32	14100	Disposal of Sluds & Cuttings	
33	14150	Install Test Pump and Discharge	
34	14200	Development/Pumping	
35	14250	Test Pumping	
36	14300	Infection and Chlorination	
37	19050	Offsite Activities Mob/Demob	
38	19100	Shop	
39	19150	Administration	
40	19550	Officer Activities Standby	
41	19600	Fishing for Lost/Broken Tooling	
42	19650	Change Order Activities	
43	88000	Equipment Repairs	
44	90170	Damages	
45	90200	Job Superintendent	
		Lunch	
		TOTAL HOURS	

• 4200 吨级散货船 4 艘 (2 艘在造)

Activity	Delimitation
1st Safety Meeting: Lockout Tagout	
2nd Safety Meeting: Under standing the HIRA chart + program	
1400 - 1930 Lightening break	

## TIME OF ACTIVITY BY ITEM NUMBER

[illegible]

## COMMENTS - EVENTS - CONDITIONS: CHANGES - OTHER INFORMATION

Push high voltage cable along 4" yellow wire to Rig.  
Loaded up Rain for Reent pump and Filtration System  
with hoses and manifolds. Scrubed Rig pad. Made 33  
High voltage signs. 4160 volts placed from Main Power  
Source to Rig. Empty trash Throughput Location. Cleaned  
up welder area.

**\* Installer's Signature**

54

**Client's Signature**

## PAYROLL

• 291

Supervisor's Signature



CUENT FPL

### Proposed Turkey Point Units 6 and 7

JOB SITE NAME EWI

Docket Nos. 52-040 and 52-041

~~L-2011-353 Enclosure 1 Page 28 of 46~~

DATE: 8/3/11  
by [signature]

JOB NO. 11771

JOBSITE LOCATION T.P.

PERSONNEL EMPLOYED TODAY

Crew Assignment	Employee - Full Name	Per Diem? (X)	Onsite Hours	Offsite Hours	Total Hours
PREPARE	Danny Kealey	X	12		12
JR	Jones Payne	X	12		12
RKF	Bob Feetham	X	12		12

## EQUIPMENT DEPLOYED TODAY

Description		Unit #	Status
Working	WK	Mobilization	MB
Standby	SD	Demobilization	DM
Down in Shop	DS	Available in Yard	AY
Down on Site	DN	Available on Job	AV

## DAILY ACCOUNTING OF ACTIVITIES BY ITEM N

Item #	Cost Code	Labor Activity	Hours
1	10000	Short Duration Job	
2	11100	Onsite Mob/Demob	
3	11150	Job Preparation	
4	11200	Safety Meeting	
5	11250	Training - Overhead	
6	0006	Shop - Overhead	
7	0007	Maintenance - Overhead	
8	11250	Training - Job Chargeable	
9	11300	Site Clean up	
10	11350	Install Sound Walls	
11	11400	Install Decon Pad	
12	11450	Install Surface Casing	
13	11500	Install Roadway & Ditch Pad	
14	12050	Test Hole Drilling	
15	12100	Geophysical Logging & Other Testing	
16	12150	Liquifer Zone Testing	
17	12200	Boarding & Abandonment	
18	13050	Production Well Installation	
19	12100	Install Conduits or Pipe	
20	13150	Open Plot Hole	
21	13200	Geophysical Logging & Other Testing	
22	12250	Liquifer Zone Testing	
23	13300	Boarding & Abandonment/Cement Plugs	
24	13350	Reaming	
25	13400	Under Reaming	
26	13450	Inner Casing	
27	13500	Install Screen	
28	13550	Gravel Pack The Well	
29	13600	Install Annular Seal	
30	13650	Water Working	
31	14050	Well Development for Lift and Swab	
32	14100	Disposal of Sluds & Cuttings	
33	14150	Furnish & Install Test Pump and Discharge	
34	14200	Development Pumping	
35	14250	Test Pumping	
36	14300	Installation and Circulation	
37	19050	Offsite Activities Mob/Demob	
38	19100	Shop	
39	19150	Administration	
40	19550	Offsite Activities Standby	
41	19650	Fishing for Lost/Broken Tooling	
42	19650	Change Order Activities	
43	88000	Equipment Repairs	
44	90170	Damages	
45	90200	Job Superintendence	
		Lunch	
		TOTAL HOURS	

### MATERIALS USED: 100% NYLON

Quarter	Activity
#1	SAFETY MEETING H.I.R.A.
#2	TOOL BOX TALKS BAD WEATHER DRIVE

#### TIME OF ACTIVITY BY ITEM

[illegible]

## COMMENTS - EVENTS - CONDITIONS - CHANGES - OTHER INFORMATION

REPAIR	SILT FENCE	REPAIR	BURNER
185	AIR COMPRESSOR	ORGANIZ	AND STOCK
SAMPLE	IN 5 GALLON	BUCKETS,	MARCE OUT
PUR	FAUL AREA	PROGRAM	FIR PART
DOG HOUSES	CHLORID	SITE FOR	ENVIRONMENTAL

**Installer's Signature**

**MLC -**

**Client's Signature**

## PAYROLL

Supervisor's Signature \_\_\_\_\_

**Due**



[illegible]

Date	Time (hours)	Depth to Water (ft. btoc)	Water Elevation (ft. NAVD 88)	Specific Conductance (umhos/cm)	Chloride (mg/L)	TDS (mg/L)	Temperature (degrees C)	Remarks
4/21/2011	1108	10.49	-1.61	78,700	32,200	57,000	29.8	Background Sampling
4/29/2011	1157	10.68	-1.80	80,400	29,900	53,800	30.4	
5/5/2011	1157	11.40	-2.52	81,400	27,500	52,350	31.2	
5/11/2011	1309	11.00	-2.12	76,800	31,600	51,200	29.7	
5/19/2011	0958	10.48	-1.60	72,600	35,600	51,200	29.5	
5/26/2011	1050	10.76	-1.88	71,360	29,500	52,900	29.7	
6/2/2011	1134	10.78	-1.90	71,700	29,000	55,700	29.6	
6/9/2011	1128	10.61	-1.73	69,700	32,300	50,650	29.3	
6/16/2011	0958	10.35	-1.47	69,300	33,000	53,450	29.5	
6/23/2011	1028	10.41	-1.53	69,400	30,600	55,600	29.5	
6/30/2011	0928	10.15	-1.27	70,300	27,600	51,950	29.2	
7/8/2011	1210	9.00	-0.12	72,570	30,100	54,150	29.9	
7/14/2011	1338	9.75	-0.87	76,400	27,200	54,550	29.9	
7/21/2011	1039	9.35	-0.47	72,200	32,600	49,760	29.7	
7/28/2011	1119	9.51	-0.63	71,600	30,200	54,250	29.7	

ft. btoc: feet below top of casing  
 TOC: Top of Casing  
 ft. NAVD 88: North American Vertical Datum of 1988  
 umhos/cm: micromhos per centimeter  
 mg/L: milligrams per liter  
 C: Celsius

Note: TOC elevation is:                 8.88 feet NAVD 88





<b>Project:</b>		Florida Power & Light Company Miami-Dade County, Florida Exploratory Well EW-1						 	
<div>EW-1 Pad Monitoring Well Water Quality Data</div> <div>Northwest Pad Monitoring Well</div> <div>(NW-EW PMW)</div>									
Date	Time (hours)	Depth to Water (ft. btoc)	Water Elevation (ft. NAVD 88)	Specific Conductance (umhos/cm)	Chloride (mg/L)	TDS (mg/L)	Temperature (degrees C)	Remarks	
4/21/2011	1221	10.50	-1.66	84,300	33,500	59,900	30.8	Background Sampling	
4/29/2011	1120	10.65	-1.81	86,300	33,700	56,400	30.0		
5/5/2011	1051	11.40	-2.56	87,400	31,300	57,650	31.1		
5/11/2011	1034	12.40	-3.56	79,100	33,500	55,650	30.4		
5/19/2011	1113	13.90	-5.06	80,000	36,000	53,700	30.4		
5/26/2011	1125	10.73	-1.89	75,130	32,300	55,450	30.4		
6/2/2011	1215	10.75	-1.91	75,900	30,700	59,500	30.3		
6/9/2011	1248	10.60	-1.76	72,500	32,200	51,950	29.9		
6/16/2011	1118	10.25	-1.41	72,500	31,500	54,550	30.0		
6/23/2011	1143	10.37	-1.53	73,300	31,600	57,750	30.3		
6/30/2011	1049	10.10	-1.26	75,700	27,400	54,300	30.0		
7/8/2011	1112	9.38	-0.54	74,100	30,700	53,950	30.3		
7/14/2011	1524	9.75	-0.91	79,900	27,600	56,350	30.3		
7/21/2011	1226	9.60	-0.76	76,200	32,600	54,500	29.7		
7/28/2011	1154	9.80	-0.96	74,900	32,200	57,050	30.5		
</									

**EW-1 Pad Monitoring Well Water Quality Data**  
**Southwest Pad Monitoring Well**  
**(SW-EW PMW)**

ft. btoc:	feet below top of casing
TOC:	Top of Casing
ft. NAVD 88:	North American Vertical Datum of 1988
umhos/cm:	micromhos per centimeter
mg/L:	milligrams per liter
C:	Celsius
Note:	TOC elevation is: 8.88 feet NAVD 88

[illegible]



Florida Power & Light Company Turkey Point Exploratory Well EW-1 34-inch Diameter Casing Run Summary					 
Date Installed	Time Installed	Joint #	Mill #	Length of Joint	Cumulative Length
8/1/2011	9:15	1	11P02636	20.80	20.80
8/1/2011	10:08	2	11P02636	39.01	59.81
8/1/2011	10:50	3	11P02636	39.04	98.85
8/1/2011	11:50	4	11P02636	39.02	137.87
8/1/2011	12:44	5	11P02636	38.96	176.83
8/1/2011	13:34	6	11P02636	39.00	215.83
8/1/2011	14:19	7	11P02636	39.02	254.85
8/1/2011	15:18	8	11P02636	39.00	293.85
8/1/2011	16:08	9	11P02636	39.01	332.86
8/1/2011	16:58	10	11P02636	39.00	371.86
8/1/2011	17:48	11	11P02636	39.01	410.87
8/1/2011	18:33	12	11P02636	39.04	449.91
8/1/2011	19:42	13	11P02636	39.03	488.94
8/1/2011	20:50	14	11P02636	39.02	527.96
8/1/2011	21:32	15	11P02636	39.04	567.00
8/1/2011	23:32	16	11P02636	39.00	606.00
8/2/2011	0:10	17	11P02636	39.05	645.05
8/2/2011	1:00	18	11P02636	39.01	684.06
8/2/2011	1:48	19	11P02636	39.04	723.10
8/2/2011	2:39	20	11P02636	39.04	762.14
8/2/2011	3:30	21	11P02636	39.03	801.17
8/2/2011	4:15	22	11P02636	39.02	840.19
8/2/2011	5:05	23	11P02636	39.02	879.21
8/2/2011	5:50	24	11P02636	38.98	918.19
8/2/2011	6:35	25	11P02636	39.00	957.19
8/2/2011	7:12	26	11P02636	39.01	996.20
8/2/2011	8:07	27	11P02636	38.97	1,035.17
8/2/2011	9:44	28	11P02636	38.96	1,074.13
8/2/2011	10:27	29	11P02636	38.97	1,113.10
8/2/2011	11:12	30	11P02636	39.03	1,152.13
8/2/2011	12:08	31	11P02636	39.00	1,191.13
8/2/2011	13:10	32	11P02636	39.01	1,230.14
8/2/2011	14:05	33	11P02636	39.00	1,269.14
8/2/2011	17:01	34	11P02636	38.99	1,308.13
8/2/2011	17:42	35	11P02636	39.04	1,347.17
8/2/2011	18:30	36	11P02636	39.01	1,386.18
8/2/2011	19:45	37	11P02636	39.00	1,425.18
8/2/2011	21:20	38	11P02636	38.98	1,464.16
8/2/2011	22:15	39	11P02636	39.01	1,503.17
8/2/2011	23:55	40 (Header)	11P02636	38.33	1,541.50
Length of header joint from the base of the lugs is 38.33 feet and 6.5 feet is above pad level. This will put 1,535 feet of casing below pad level. <b>Casing set to 1,535 feet bpl</b> All lengths measured in feet.					



<b>Florida Power &amp; Light Company</b> <b>Turkey Point</b> <b>Exploratory Well EW-1</b> <b>Daily Kill Material Log</b>			
Date	Depth (feet bpl)	Kill Used	Approximate Volume (gallons)
7/7/2011	1655	Bentonite /Barite	569
7/8/2011	1655	Bentonite /Barite	6,064
7/9/2011	1655	Bentonite /Barite	2,085
7/10/2011	1655	Bentonite /Barite	1,137
7/11/2011	1655	Bentonite /Barite	9,475
7/12/2011	1655	Bentonite /Barite	759
7/13/2011	1655	Bentonite /Barite	4,548
7/15/2011	1655	Bentonite /Barite	1,925
7/16/2011	1655	Bentonite /Barite	2,200
7/17/2011	1655	Bentonite /Barite	284
7/18/2011	1655	Bentonite /Barite	275
7/19/2011	1655	Bentonite /Barite	275
7/31/2011	1542	Bentonite /Barite	18,950
8/1/2011	1542	Bentonite /Barite	4,548
8/2/2011	1542	Bentonite /Barite	284
feet bpl = feet below pad level			

# MV Geophysical

Proposed Turkey Point Units 6 and 7  
Docket Nos. 52-040 and 52-041  
L-2011-353 Enclosure 1 Page 36 of 46

## X-Y CALIPER GAMMA RAY LOG

Company Layne Christensen Company Well Turkey Point EW-1 Field Florida City County Miami-Dade State/Prv Florida	Company		Layne Christensen Company					
	Well		Turkey Point EW-1					
	Field		Florida City					
	County		Miami-Dade			State/Prv Florida		
	Location		FPL Turkey Point Power Plant LAT: 25 25' 19" N LONG: 80 20' 08" W McNabb Hydrogeologic Consulting, Inc.				Other Services  XY/GR	
Permanent Datum		Pad Level		Elevation		K.B.		
Log Measured From		Pad Level				D.F.		
Drilling Measured From		Pad Level				G.L.		
Date		1-AUG-2011						
Run Number		SEVEN						
Depth Driller		1542'						
Depth Logger		1542'						
Bottom Logged Interval		1540'						
Top Log Interval		995'						
Open Hole Size		12.25"						
Type Fluid		H2O						
Density / Viscosity		N/A/N/A						
Max. Recorded Temp.		see FCT log						
Estimated Cement Top		SURFACE						
Time Well Ready		01:15 8/1/2011						
Time Logger on Bottom		01:15 8/1/2011						
Equipment Number		MVGS-1						
Location		Ft. Myers						
Recorded By		S.Miller/C.Miller						
Witnessed By		M.McNeal (ASR)		C.Ferguson (LCC)				
Borehole Record				Tubing Record				
Run Number	Bit	From	To	Size	Weight	From	To	
ONE	12.25"	SURFACE	255'	FIVE	12.25"	1090'	1655'	
TWO	62.5"	SURFACE	259'	SIX	42.5"	1090'	1542'	
THREE	12.25"	255'	1090'					
FOUR	52.5"	255'	1095'					
Casing Record		Size	Wgt/Ft	Top		Bottom		
Surface String		64"	0.375" WT	SURFACE		33'		
Prot. String		54"	0.375" WT	SURFACE		255'		
Production String		44"	0.375" WT	SURFACE		1090'		
Liner				LTP1.db		1087'		
Invoice No.		2011124	P.O. #:	8fld/las/pdf		* FINAL PRINT *		

<<< PREVIOUS PAGE >>>

All interpretations are opinions based on inferences from electrical or other measurements and we cannot and do not guarantee the accuracy or correctness of any interpretation, and we shall not, except in the case of gross or willful negligence on our part, be liable or responsible for any loss, costs, damages, or expenses incurred or sustained by anyone resulting from any interpretation made by any of our officers, agents or employees. These interpretations are also subject to our general terms and conditions set out in our current Price Schedule.

# Comments

Proposed Turkey Point Units 6 and 7  
Docket Nos. 52-040 and 52-041  
L-2011-353 Enclosure 1 Page 37 of 46

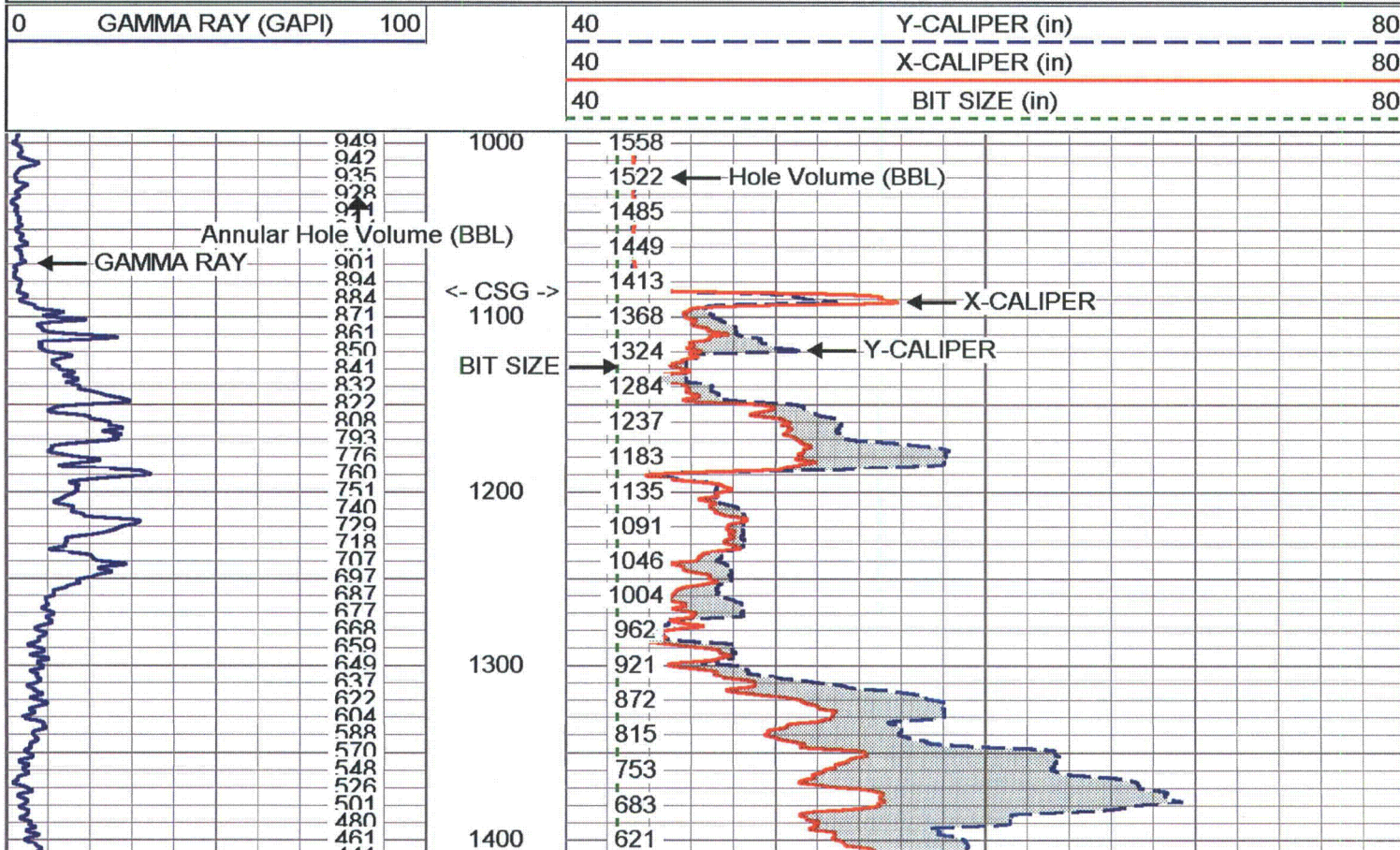
MAXIMUM Caliper Arm Extensions: 51"

BOREHOLE VOLUMES IN BARRELS

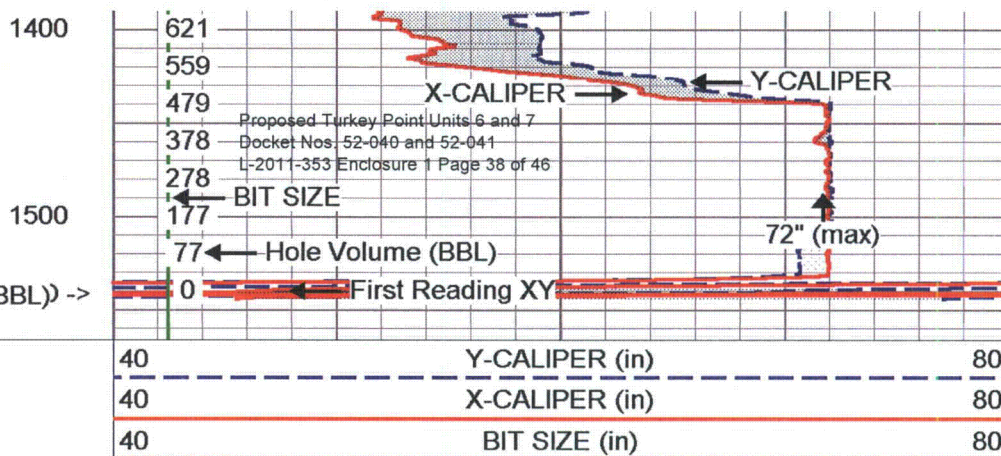
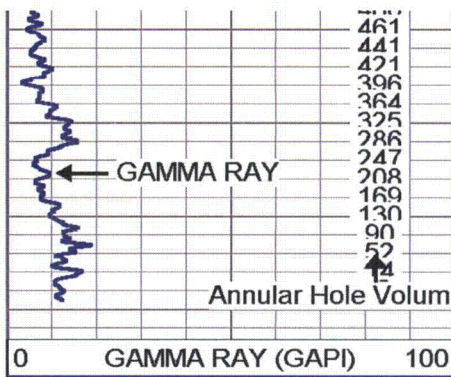
**MV**  
Geophysical

## MAIN PASS - 72" ARM

Database File: ltp1.db  
Dataset Pathname: run8/MAIN  
Presentation Format: XY4080B5  
Dataset Creation: Mon Aug 01 02:37:11 2011  
Charted by: Depth in Feet scaled 1:1200







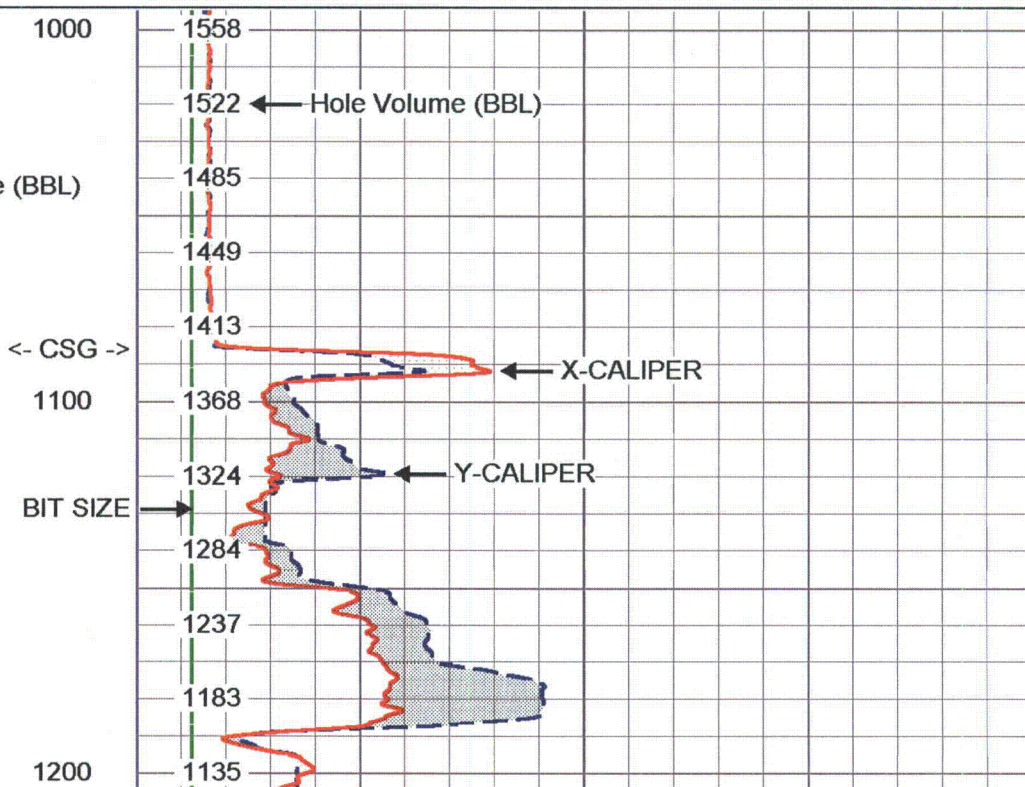
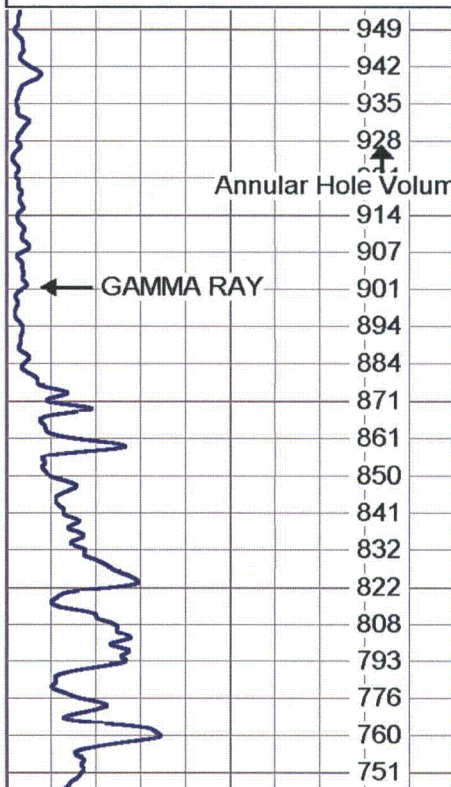
**MV**  
Geophysical

## MAIN PASS - 72" ARM

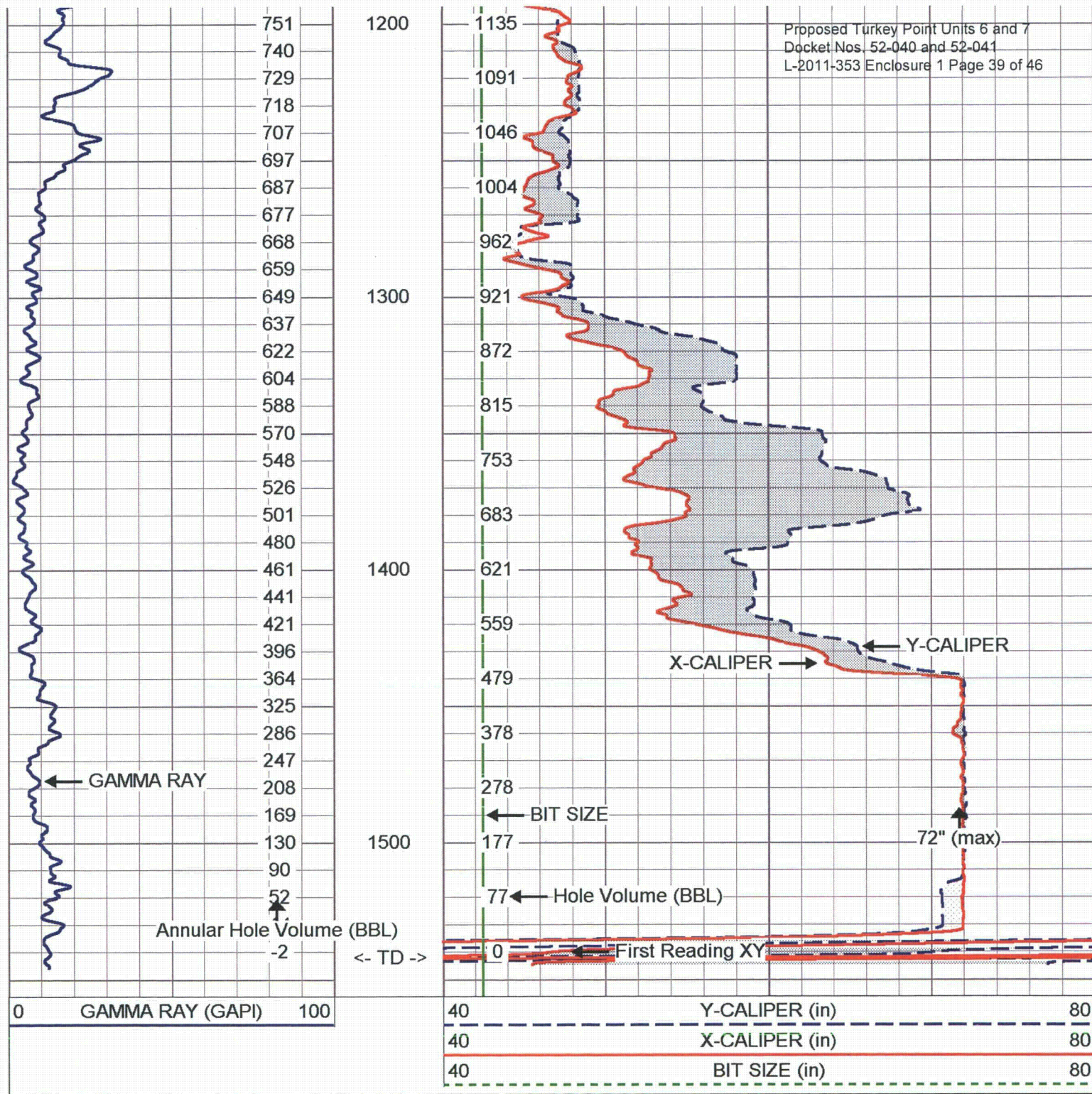
Database File: ltp1.db  
Dataset Pathname: run8/main  
Presentation Format: XY4080B5  
Dataset Creation: Mon Aug 01 02:37:11 2011  
Charted by: Depth in Feet scaled 1:600

0 GAMMA RAY (GAPI) 100

40 Y-CALIPER (in) 80  
40 X-CALIPER (in) 80  
40 BIT SIZE (in) 80









## MAIN PASS - 72" ARM

Database File: ltp1.db  
 Dataset Pathname: run8/mAIN  
 Presentation Format: XY4080B5  
 Dataset Creation: Mon Aug 01 02:37:11 2011  
 Charted by: Depth in Feet scaled 1:240

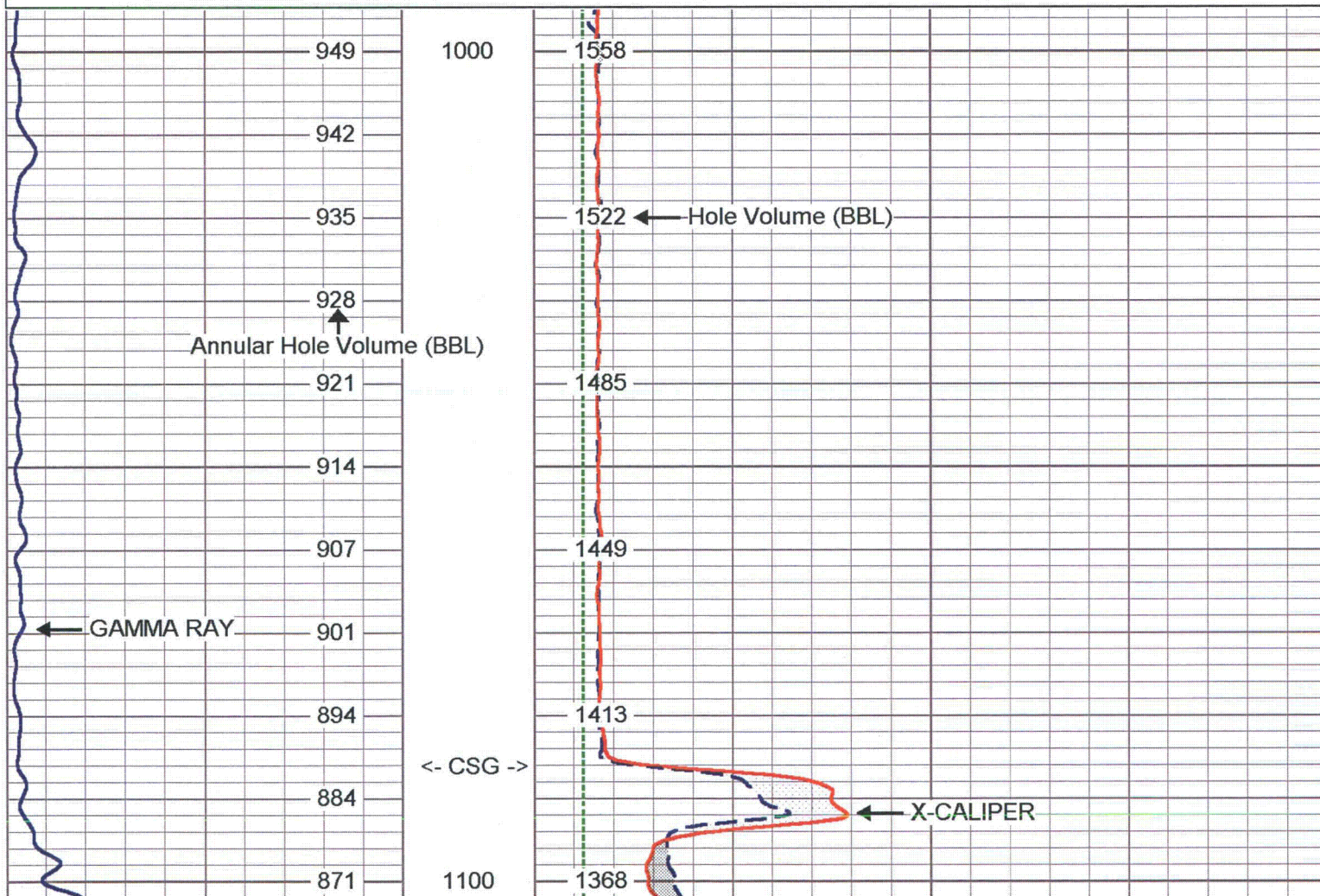
Proposed Turkey Point Units 6 and 7  
 Docket Nos. 52-040 and 52-041  
 L-2011-353 Enclosure 1 Page 40 of 46

0 GAMMA RAY (GAPI) 100

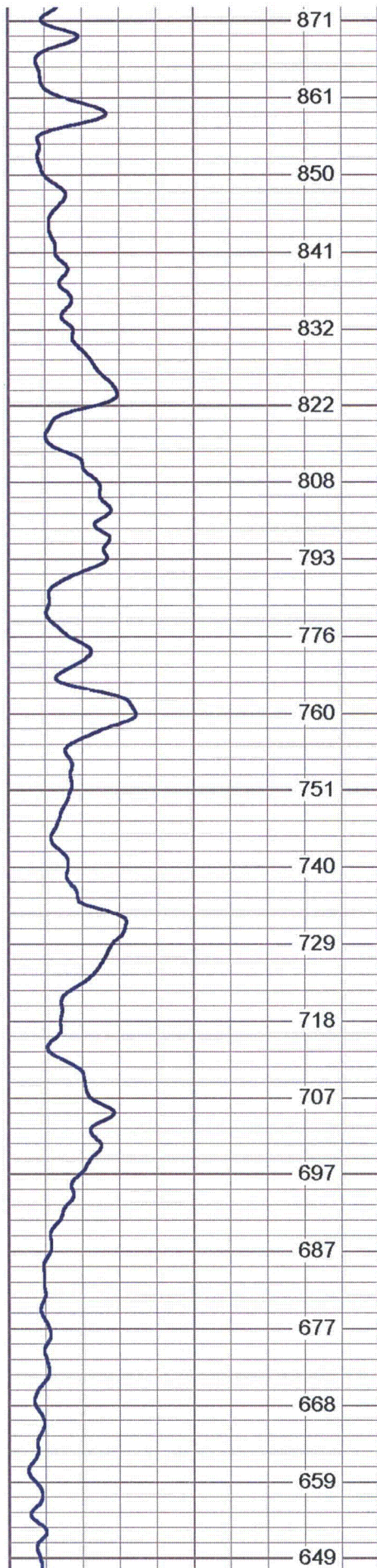
40 Y-CALIPER (in) 80

40 X-CALIPER (in) 80

40 BIT SIZE (in) 80





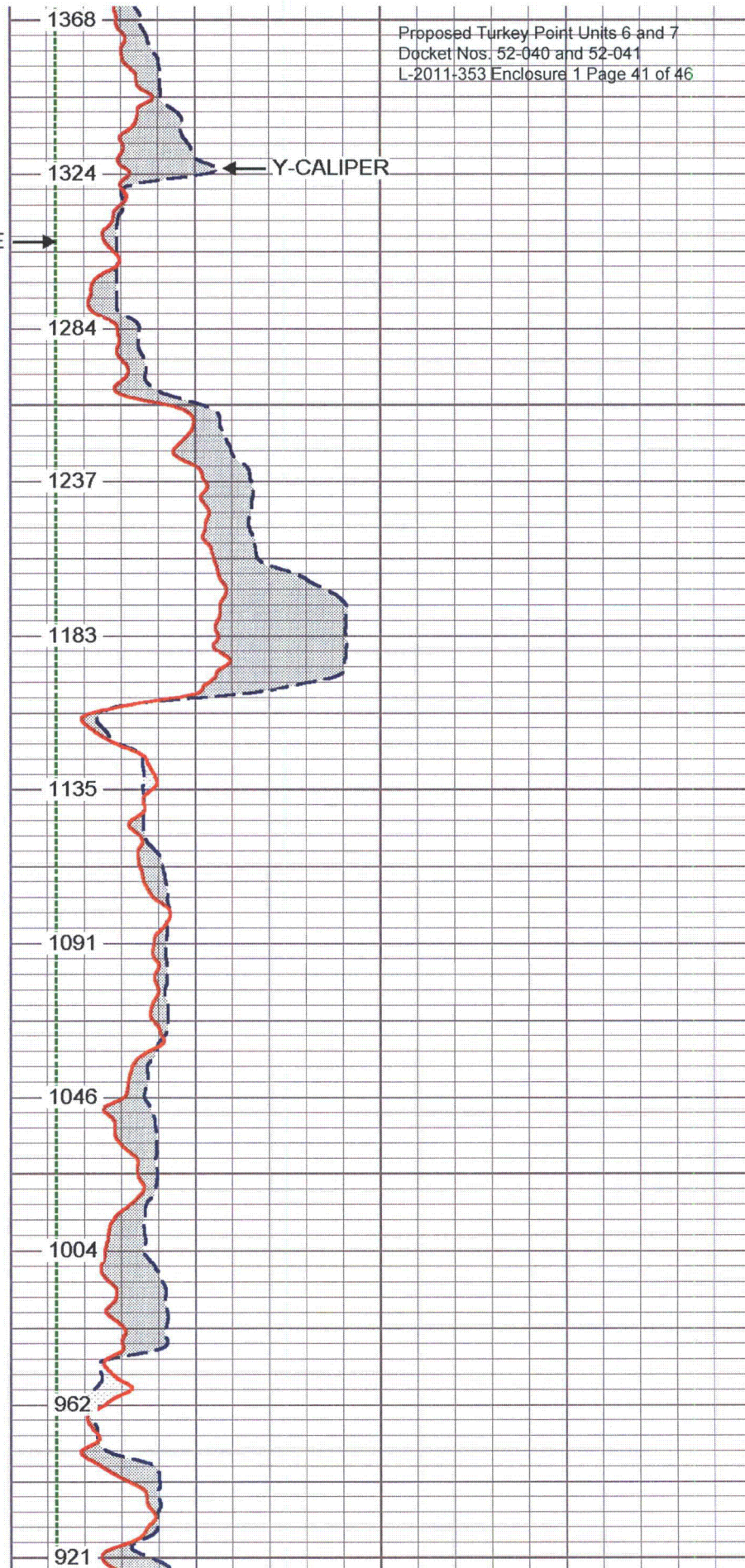


1100

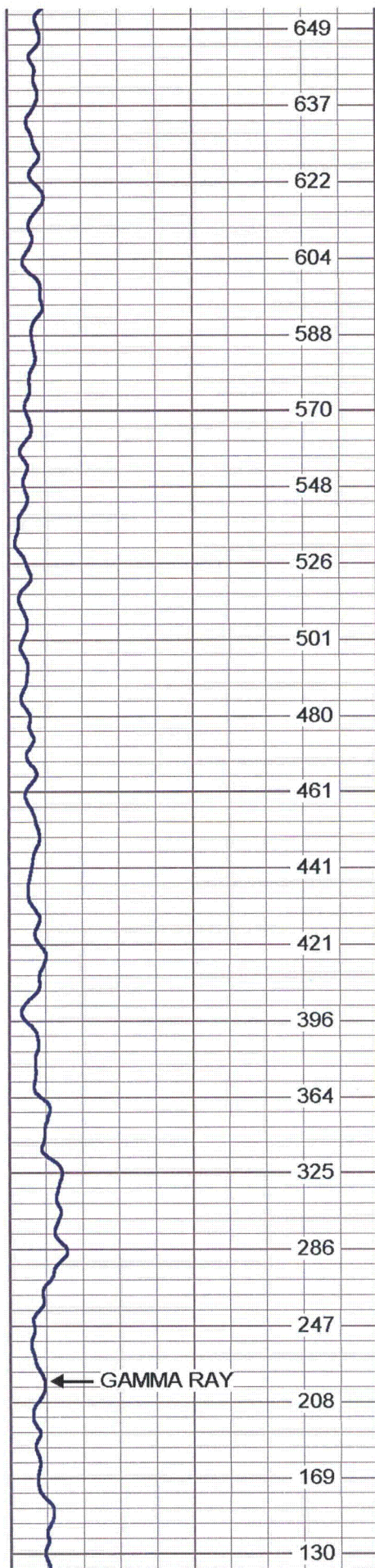
BIT SIZE →

1200

1300



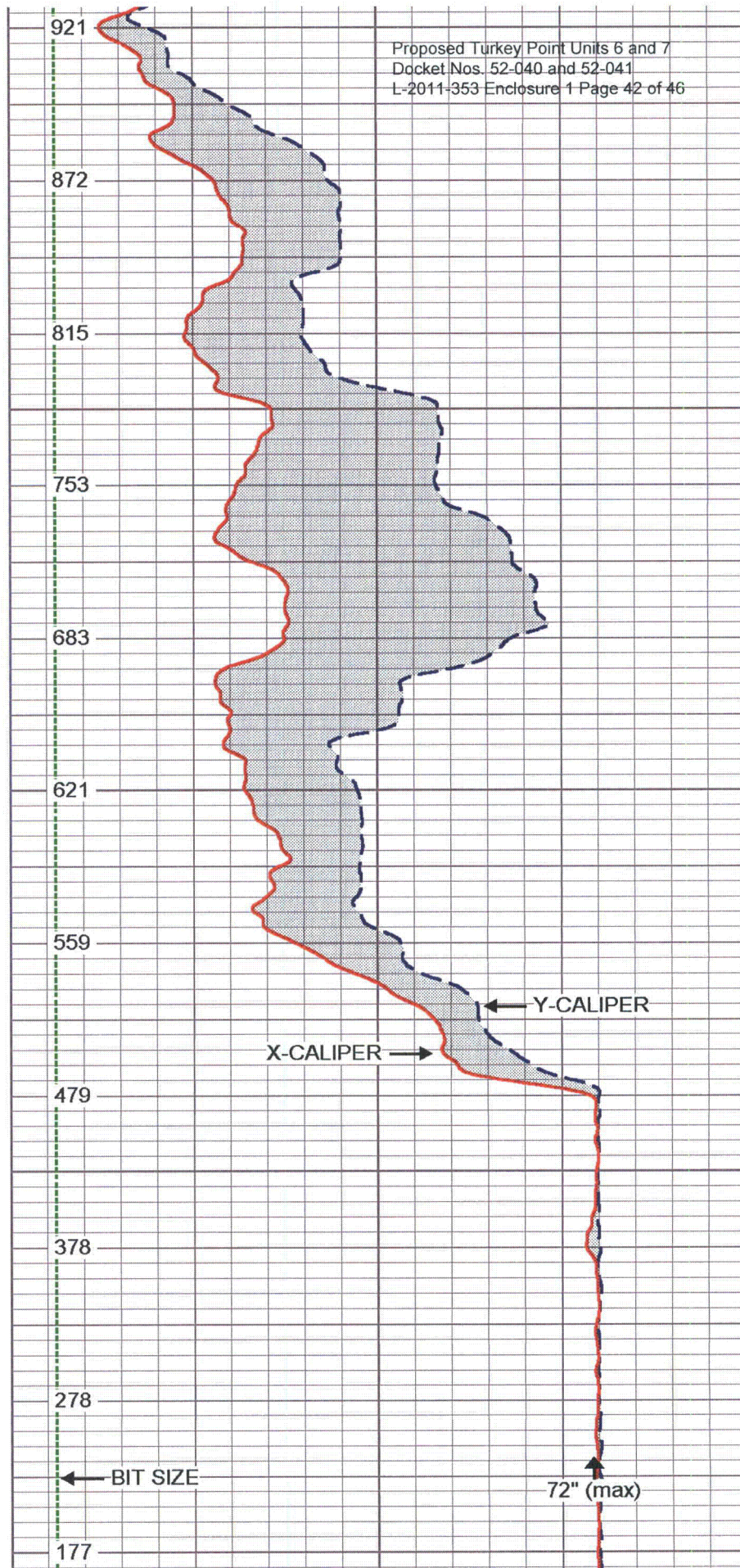




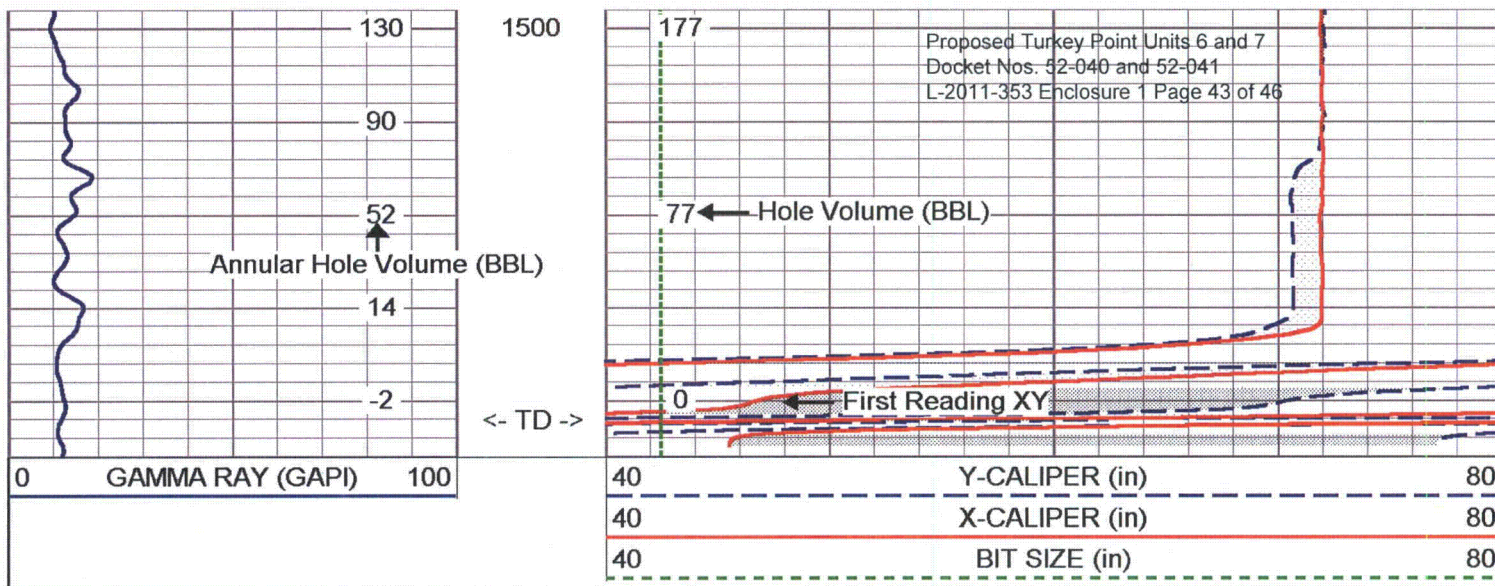
1300

1400

1500





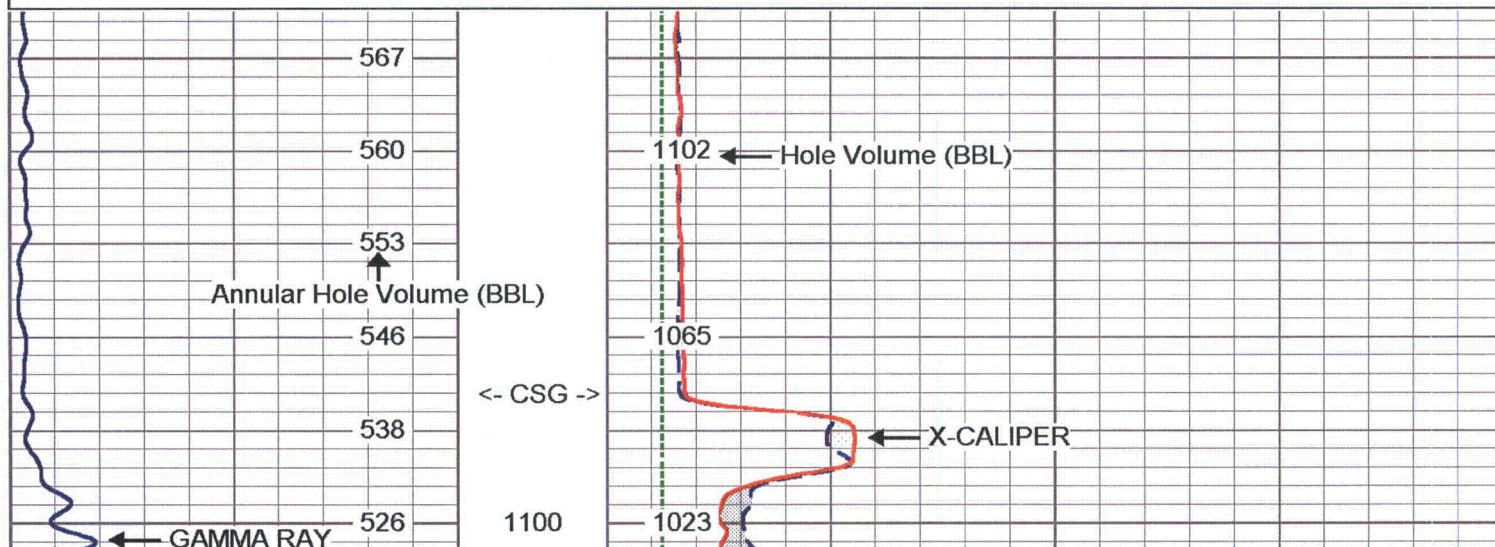


**MV**  
Geophysical

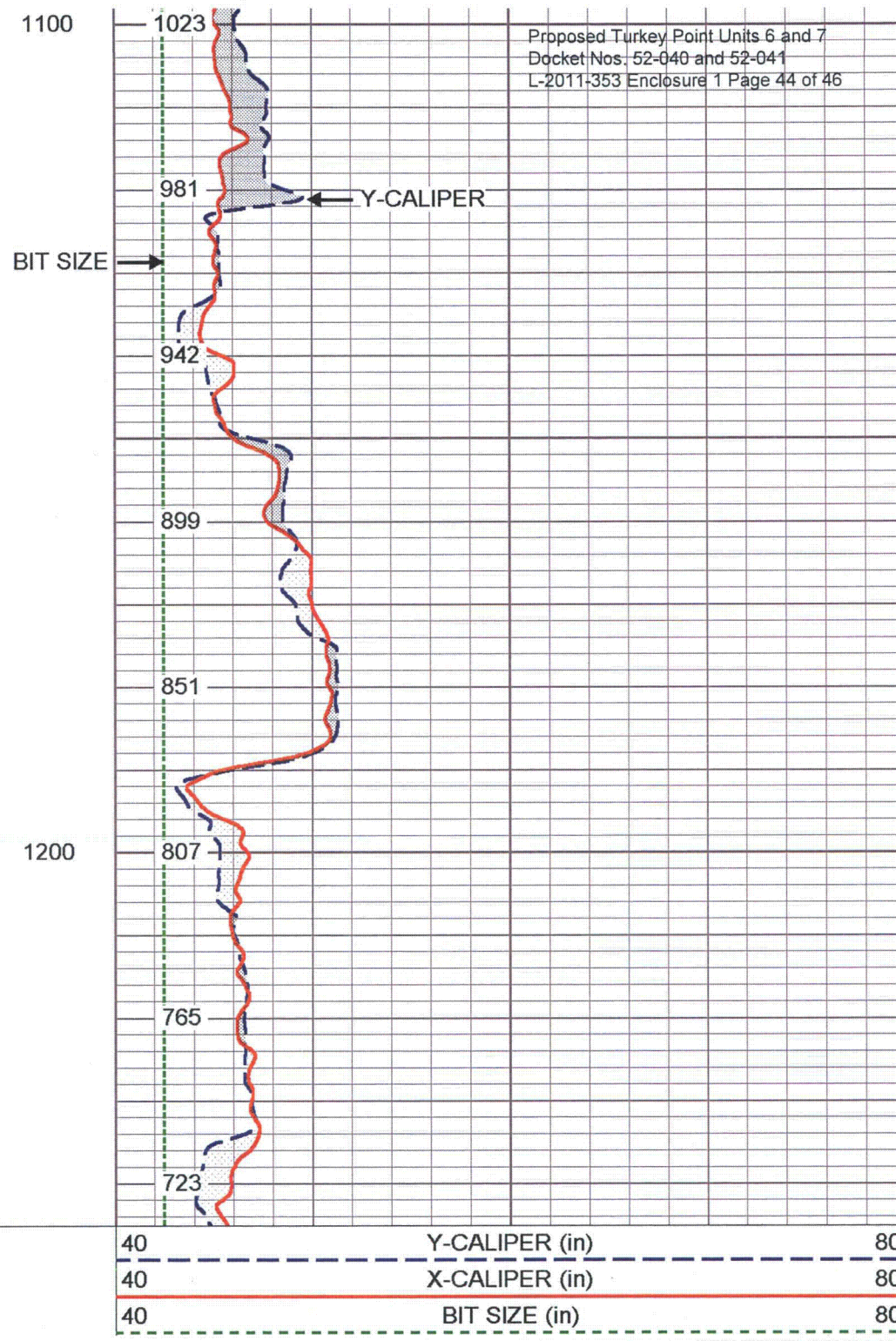
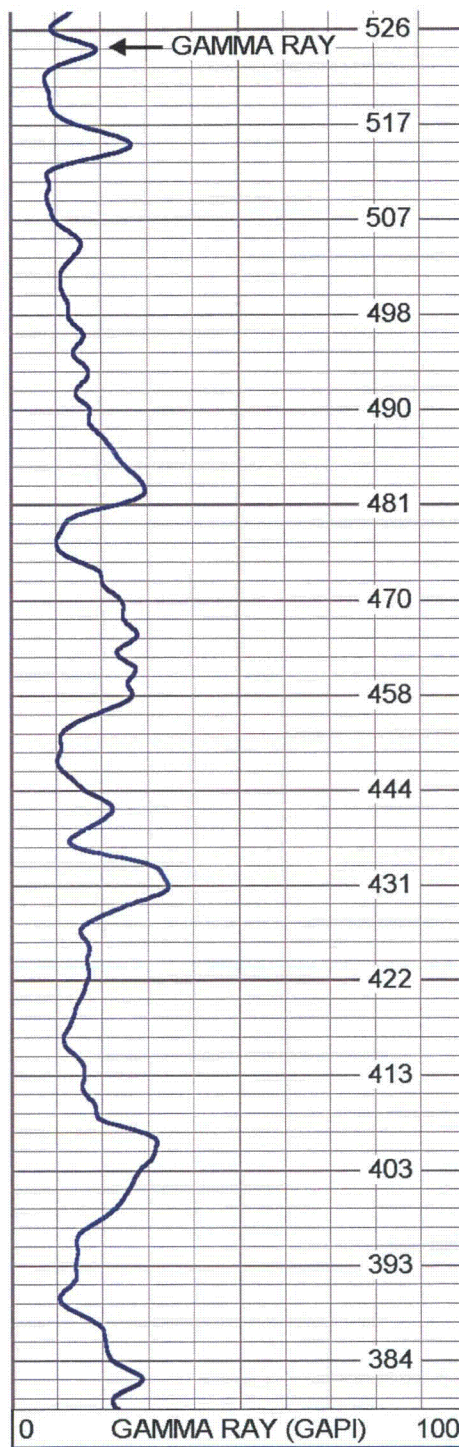
## REPEAT SECTION - 51" ARM

Database File: ltp1.db  
Dataset Pathname: run8/REPEAT  
Presentation Format: XY4080B5  
Dataset Creation: Mon Aug 01 02:48:11 2011  
Charted by: Depth in Feet scaled 1:240

0	GAMMA RAY (GAPI)	100	40	Y-CALIPER (in)	80
			40	X-CALIPER (in)	80
			40	BIT SIZE (in)	80







### XY Caliper Calibration Report

Proposed Turkey Point Units 6 and 7  
Docket Nos. 52-040 and 52-041  
L-2011-353 Enclosure 1 Page 45 of 46

Serial Number:	01L		
Tool Model:	XYCL		
Performed:	Mon Aug 01 01:48:19 2011		
Small Ring:	43.25	in	
Large Ring:	72	in	
	X Caliper	Y Caliper	
Reading with Small Ring:	917.1	919	cps
Reading with Large Ring:	1141	1078	cps
Gain:	0.128406	0.180818	
Offset:	-74.5107	-122.921	

### Gamma Ray Calibration Report

Serial Number:	01	
Tool Model:	GROH	
Performed:	Thu Jul 28 17:00:34 2011	
Calibrator Value:	120	GAPI
Background Reading:	14.711	cps
Calibrator Reading:	132.666	cps
Sensitivity:	1.01734	GAPI/cps

GR 7.60 ft

GR-GROH (01)  
40.00 lb 3.50 in OD 2.75 ft

XYC-XYCL (01L)  
87.00 lb 3.50 in OD 6.60 ft

XCAL 2.25 ft  
YCAL 2.25 ft

Dataset: run8/pass2  
Total Length: 9.35 ft  
Total Weight: 127.00 lb  
O.D. 3.50 in