



Phase I & II QA Photos

Date: May 11, 2011

Photos of Sequoyah Fuels Corporation Disposal Cell



Sandblast Building to be removed from Phase I Cell Footprint (10/2/09)



Bechtel Building to be removed from Phase I Cell Footprint (10/2/09)



Phase I Footprint, showing Phase I West Area (10/2/09)



Phase I West Area - Solid Waste Building Cleanup Area (10/2/09)



North End of Phase I West Area (10/2/09)



Northeast Corner of Phase I Cell Footprint (10/2/09)



Bechtel Building to be removed from Phase I Cell Footprint (10/13/09)



Cleanup of Phase I Cell Footprint (10/15/09)



Cleanup of Phase I Cell Footprint (10/15/09)



Cleanup of south end of Phase I Cell Footprint (10/19/09)



Removal of Bechtel Building from Phase I Cell Footprint (10/20/09)



Cleanup of south end of Phase I Cell Footprint (10/20/09)



Removal of material from Phase I Cell Footprint (10/20/09)



South end of Phase I Cell Footprint (10/26/09)



Removal of Sandblast Building from Phase I Cell Footprint (10/28/09)



Removal of Bechtel Building from Phase I Cell Footprint (11/2/09)



Preparation of Clay Borrow Area (11/2/09)



Cleanup of Phase I Cell Footprint (11/3/09)



Removal of Sandblast Building from Phase I Cell Footprint (11/4/09)



West side of Phase I Cell Footprint, showing Phase I West Area
(11/4/09)



Preparation of Clay Borrow Area (11/4/09)



Preparation of Clay Borrow Area for loading (11/4/09)



Sampling of north end of Phase I West Area (11/5/09)



Foundation of Sandblast Building and Bechtel Building at South End of Phase I Cell Footprint (11/5/09)



Visible contamination uncovered during preparation of the Phase I West Area (11/7/09)



Visible contamination found during preparation of the Phase I West Area (11/7/09)



NRC and State representatives surveying the Phase I Cell Footprint
(11/9/09)



Drilling concrete in preparation for sampling Phase I Cell Footprint
(11/9/09)



Sampling Phase I Cell footprint. Sample split with NRC. (11/9/09)



NRC inspector taking radiation reading at sample location for Phase I Cell Footprint (11/9/09)



Phase I Cell Footprint in preparation for construction (11/11/09)



Phase I Cell Footprint in preparation for construction (11/11/09)



Slotted Drisco pipe for drain system (11/11/09)



First load of clay for the Phase I Cell Base (11/11/09)



Loading clay from the Clay Borrow Area (11/11/09)



Cleanup of contamination in the Phase I West Area (11/13/09)



Clay for construction of the Phase I Cell Base (11/13/09)



Compacting clay for the Phase I Cell Base (11/16/09)



Spreading clay for the Phase I Cell Base (11/16/09)



Compacting clay for the Phase I Cell Base. Shows 6-inch lifts.
(11/16/09)



Compacting clay for the Phase I Cell Base. (11/16/09)



Compacted clay in the Phase I Cell Base. (11/16/09)



Compacting clay in the Phase I Cell Base. (11/16/09)



Construction of the Phase I Cell Base. (11/17/09)



Preparation for sand cone test of the Phase I Cell Base. (11/17/09)



Construction of Phase I Cell Base. Shows 6-inch lift. (11/19/09)



Drainage for the Phase I Cell Base during construction. (11/23/09)



Hay bales to control runoff from the Phase I Cell Base construction area.
(12/1/09)



Construction progress for the Phase I Cell Base. (12/3/09)



Nuclear density testing of the Phase I Cell Base. (12/4/09)



Nuclear density testing of the Phase I Cell Base. (12/4/09)



Pumping the incinerator area in preparation for filling. (12/4/09)



Construction progress for the Phase I Cell Base. (12/16/09)



Construction progress for the Phase I Cell Base. (12/22/09)



Construction progress for the Phase I Cell Base. (12/22/09)



Layout for the Phase I Cell Sumps. (1/11/10)



Preparation for sampling at the north edge of the Phase I Cell Base.
(1/12/10)



Construction of the east perimeter berm of the Phase I Cell Base.
(1/19/10)



Verification sampling for the Phase I Sump Area. (1/21/10)



Sampling of the Phase I Sump Area. (1/25/10)



Surveying the Phase I Cell Base. (1/26/10)



Spreading and compacting clay for construction of the Phase I Sumps.
(1/26/10)



Construction of the Phase I Sumps. (1/26/10)



Stockpiling sand for use in the Phase I Cell. (2/11/10)



Receipt of the liner material for the Phase I Cell Base. (2/12/10)



Unloading the liner material for the Phase I Cell Base. Stored on sand layer. (2/12/10)



Phase I Liner Material. (2/12/10)



Phase I Leachate Collection Sump. (2/19/10)



Phase I Leachate Collection Sump. (2/19/10)



Stockpiling sand for the Phase I Cell. (2/22/10)



Preparation for remediation of area beneath the concrete at the north edge of the Phase I Cell Base. (2/24/10)



Removal of concrete from the north edge of the Phase I Cell Base in preparation for remediation. (2/25/10)



Remediation of area at north edge of Phase I Cell Base. (2/25/10)



Surveying remediated area at north edge of Phase I Cell Base. (2/25/10)



Remediated area at north edge of Phase I Cell Base. (2/25/10)



Sampling of remediated area at north edge of Phase I Cell Base.
(2/25/10)



Construction of perimeter berm at southeast corner of Phase I Cell Base.
(3/3/10)



Perimeter berm at south end of Phase I Cell Base. (3/3/10)



Plugging of monitor wells in the Phase II Cell Footprint. (3/3/10)



Preparation of leak detection piping for the Phase I Cell Base. (3/4/10)



Placement of the Leak Detection Piping for the Phase I Cell Base.
(3/4/10)



Final acceptance density testing of the Phase I Cell Base. (3/4/10)



Installing sand layer for the Leak Detection Piping for the Phase I Cell Base. (3/4/10)



Installing the sand layer for the Phase I Cell Leak Detection Piping. (3/4/10)



Installing the sand layer for the Phase I Cell Leak Detection Piping.
(3/4/10)



Verifying sand depth for the Phase I Cell sand layer. (3/4/10)



Installation of Leak Detection Piping in the Phase I Cell. (3/6/10)



Installing Leak Detection Piping in Phase I Cell Base. (3/11/10)



Installation of Phase I Leak Detection Piping. (3/11/10)



Installation of Phase I Leak Detection Piping. (3/11/10)



Installation of Phase I Leak Detection Piping. Shows fused joint in pipe.
(3/11/10)



Installation of Phase I Leak Detection Pipe and sand layer. (3/11/10)



Mixing flyash in the North Fluoride Basin. Mixed calcium fluoride sludge/flyash will be used in the Phase I Cell. (3/16/10)



Perimeter berm and sand layer in the Phase I Cell. (3/18/10)



Construction progress on the Phase I Cell. (3/18/10)



Construction progress on the Phase I Cell. (3/18/10)



Layout of the Leak Detection Piping in the Phase I Cell. (3/18/10)



Installation of the Leak Detection Piping in the Phase I Cell. (3/18/10)



Installation of the Leak Detection Piping in the Phase I Cell. (3/18/10)



Construction progress on the Phase I Cell. (3/19/10)



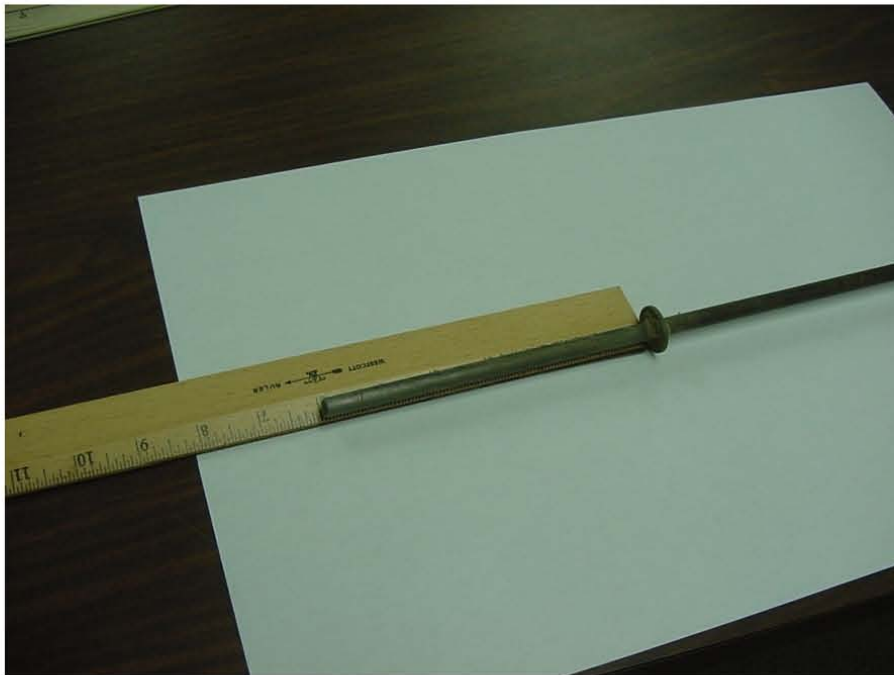
Final as-built survey of the Phase I Cell Base. (3/24/10)



As-built survey of the Phase I Cell Base. (3/24/10)



Installation of the Phase I Leak Detection Piping. (3/31/10)



Tool for verifying 6-inch depth of sand for the Phase I Leak Detection Piping layer. (4/2/10)



Verification of depth of clay liner. (4/6/10)



Verification of depth of clay liner. This location was 2.9 feet thick.
(4/6/10)



Verification of clay liner thickness for Phase I Cell Base. (4/6/10)



Phase I Cell ready for HDPE Liner installation. (4/7/10)



Installation of HDPE Liner in Phase I Cell. (4/8/10)



Installation of HDPE Liner in Phase I Cell. (4/8/10)



Installation of HDPE Liner in Phase I Cell. (4/8/10)



Heat welding seam in Phase I Cell HDPE Liner. (4/8/10)



Heat welding seam in HDPE Liner for Phase I Cell. (4/8/10)



Heat welding seam in HDPE Liner in Phase I. Cleaning area in front of weld. (4/8/10)



Heat welding seam in HDPE Liner for Phase I Cell. (4/8/10)



Heat welding seam in HDPE Liner for Phase I Cell. Panels are marked with panel number, roll number and date. (4/8/10)



Installing liner over the perimeter berms on Phase I Cell. (4/9/10)



Installing HDPE Liner in Phase I Cell. (4/9/10)



Installation of Phase I Cell HDPE Liner. (4/9/10)



Installing HDPE Liner in Phase I Cell. Sand bags used to weight edges.
(4/9/10)



Liner installation progress on Phase I Cell. (4/10/10)



Heat welding HDPE Liner on outer perimeter berm of Phase I Cell.
(4/10/10)



Installation progress for HDPE Liner in Phase I Cell. (4/10/10)



Preparation for pressure testing seams in HDPE Liner in Phase I Cell.
(4/10/10)



HDPE Liner in Phase I Cell, showing overlap between panels. (4/10/10)



Installation of liner in Phase I Sumps. (4/11/10)



Installation of liner in Phase I Sumps. (4/11/10)



Installation of boot for Leachate Collection System in Phase I Cell.
(4/12/10)



Pressure testing seams in Phase I Cell Liner. (4/12/10)



Installation of boot in Leachate Collection System in Phase I Cell.
(4/12/10)



Installation of boot in Phase I Leachate Collection System. Installed in one continuous pass with welder. (4/12/10)



Installation of boot in Leachate Collection System for Phase I Cell. (4/12/10)



Pressure testing welded seams in Phase I Cell Liner. (4/12/10)



Patch placed over test area for Phase I Cell Liner. (4/12/10)



Patch placed over test area for Phase I Cell Liner. The time and pressure results for the test were written on the liner. (4/12/10)



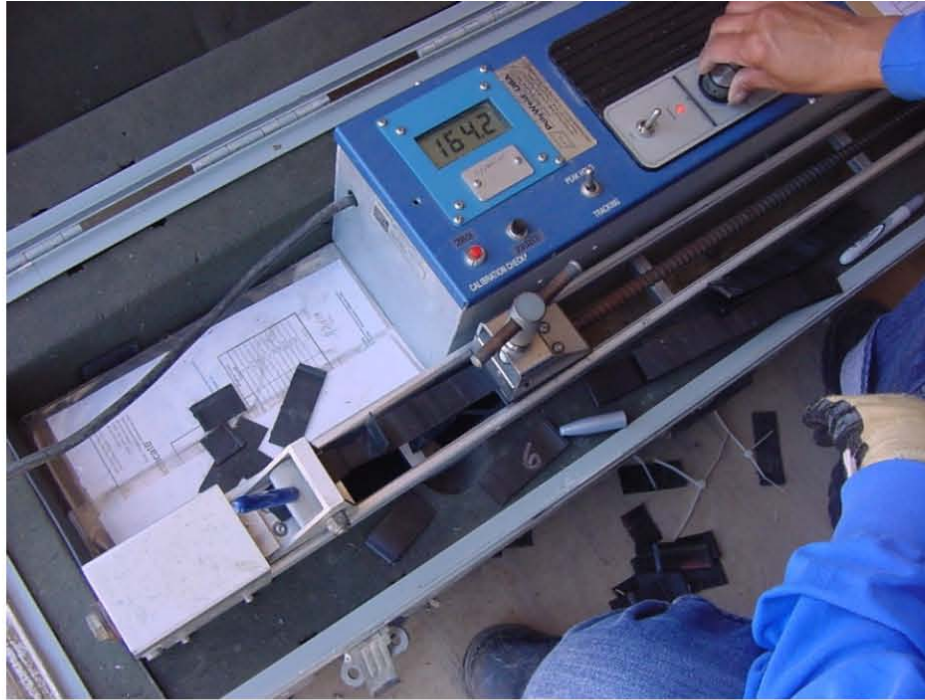
Installation of patch over test area for Phase I Cell Liner. (4/12/10)



Area showing material removed for destructive testing of HDPE Liner
for Phase I Cell. (4/12/10)



Testing HDPE Liner samples for Phase I Cell. (4/12/10)



Testing sample of HDPE Liner for Phase I Cell. (4/12/10)



Surveying haul truck used for hauling sand for the Liner cover in the Phase I Cell. (4/15/10)



Phase I Cell Base with liner installed. Part of Leachate Collection System Piping installed. Following rain. (4/19/10)



Phase I Cell Base with liner installed. Part of Leachate Collection System Piping installed. Following rain. (4/19/10)



Phase I Leachate Collection Sump. (4/19/10)



Draining water from the Leachate Collection System following rain.
(4/12/10)



Installing Leachate Collection System sand layer in Phase I Cell.
(4/22/10)



Installing Leachate Collection System sand layer in Phase I Cell.
(4/22/10)



Installing Leachate Collection System sand layer in Phase I Cell. Shows gauges used to check sand depth. (4/26/10)



Installing Leachate Collection System sand layer in Phase I Cell. Sand covers outside of Leachate Collection System Piping. (4/26/10)



Installation of clean clay material for base of stormwater berm in Phase I
Cell. (4/27/10)



Installation of clean clay material for base of stormwater berm in Phase I
Cell. (4/27/10)



Installation of clean clay material for base of stormwater berm in Phase I Cell. (4/27/10)



Installation of clean clay material for base of stormwater berm in Phase I Cell. (4/27/10)



Installing sand layer for Leachate Collection System for Phase I Cell.
Shows gauges to check sand depth. (4/27/10)



Installation of clean clay material for base of stormwater berm in Phase I
Cell. (4/27/10)



Installation of clean clay material for base of stormwater berm in Phase I Cell. (4/27/10)



Installation of Leachate Collection Piping and Sand Layer in Phase I Cell (5/4/10)



Installation of Stormwater Berm in Phase I Cell (5/5/10)



Location of Truck Access Ramp at Northwest Corner of Phase I Cell
(5/7/10)



Pond 2 prior to removal of liner (5/18/10)



Preparation of truck access for dumping flyash into the Calcium Fluoride Clarifiers (5/18/10)



Cleaning equipment prior to release from the South Calcium Fluoride Basin (5/18/10)



Preparation of truck access ramp at the northwest corner of Phase I Cell (5/22/10)



Preparation of truck access ramp at the northwest corner of Phase I Cell
(5/22/10)



Installation of Stormwater Berm in Phase I Cell (5/24/10)



Installation of Stormwater Berm in Phase I Cell (5/24/10)



Placement of solidified Calcium Fluoride Sludge into the Phase I Cell
(6/2/10)



Cleaning the outside of the haul trucks prior to return to the North Calcium Fluoride Basin – Contamination Control (6/4/10)



Placement of solidified Calcium Fluoride Sludge in Phase I (6/9/10)



Loading Pond 4 Spoils Pile for transport to Phase I Cell (6/15/10)



Removal of solidified Calcium Fluoride Sludge from North Basin for transport to Phase I Cell (6/21/10)



Phase II Area Prior to Start of Remediation (6/9/10)



Sampling Sludge Depth in North Ditch (6/10/10)



Phase II Work Area Prior to Remediation (6/16/10)



Washing Equipment for Free Release (6/22/10)



Washing Equipment for Free Release (6/25/10)



Removing Liner from Pond 2 (6/29/10)



Emergency Basin in Preparation for Remediation (6/29/10)



North Ditch in Preparation for Remediation (6/29/10)



Removing Liner from Pond 2 (6/29/10)



Pond 2 Liner Prepared for Disposal (7/13/10)



Loading Pond 2 Liner Material for Transport and Disposal (7/13/10)



Disposal of Debris from North Calcium Fluoride Basin (7/13/10)



Hauling Impacted Soil from the North Calcium Fluoride Basin and
Installation of Stormwater Berm (7/13/10)



Disposal of Pond 2 Liner (7/13/10)



Installation of Second Lift of Stormwater Berm (7/14/10)



Removal of Overburden from Calcium Fluoride Burial Areas (7/15/10)



Beginning Remediation of North Ditch (7/20/10)



Remediation of North Ditch (7/21/10)



Disposal of Debris Removed from North Ditch (7/21/10)



Remediation of North Ditch, After Removal of Debris (7/27/10)



Burial Area No. 1 Prior to Remediation (7/27/10)



Bagging North Ditch Sediment (7/30/10)



North Ditch Remediation (8/3/10)



North Ditch Sediment Bags (8/4/10)



North Ditch Remediation & Bagged Sediment (8/9/10)



Storage of North Ditch Sediment Bags (8/13/10)



North Ditch After Initial Remediation (8/18/10)



Beginning Remediation of Emergency Basin (8/19/10)



Emergency Basin Remediation (8/20/10)



North Ditch After Initial Remediation (8/23/10)



Bagging Emergency Basin Sediment (8/23/10)



Phase II Area Northwest of Emergency Basin (8/24/10)



Excavation of Burial Area No. 1 (8/24/10)



Phase II Area West of Emergency Basin (8/24/10)



North End of Phase II Cell Footprint Showing Bagging of Emergency Basin Sediment and Excavation of Burial Area No. 1 (8/27/10)



Screening Sand at Sand Borrow Area South of I-40 (8/31/10)



Hauling Bags of Emergency Basin Sediment for Storage (8/31/10)



Excavation of Burial Area No. 1 (9/1/10)



Emergency Basin After Rain Storm (9/9/10)



North End of Stormwater Capture Basin and West End of No. 1 Burial Area After Rain Storm (9/9/10)



Addition of Flyash to Stormwater Capture Basin (9/27/10)



Stormwater in No. 1 Burial Area After Flyash Addition (9/27/10)



Removal of Bags of Sediment from Emergency Basin (9/27/10)



Phase II Cell Footprint Cleanup Progress – After Removal of Bagged Sediment (9/27/10)



Phase I Cell Showing Filling with Phase II Remediation Material
(9/27/10)



No. 1 Burial Area Cleanup Progress (9/27/10)



Calcium Fluoride Burial Area Flyash Mixing (9/27/10)



No. 1 Burial Area Cleanup Progress (9/28/10)



Removal of Buried Material from No. 1 Burial Area (9/28/10)



Cleanup Progress in the Emergency Basin (9/28/10)



Final Contouring of the Calcium Fluoride Settling Basins and Clarifier
(9/30/10)



Phase II Cleanup Progress – Southwest of Emergency Basin (10/5/10)



Emergency Basin Cleanup Progress (10/7/10)



Field Sampling of the Emergency Basin for XRF Screening (10/13/10)



Sampling of the No. 1 Burial Area (10/16/10)



Sampling of the No. 1 Burial Area (10/16/10)



Sampling of the No. 1 Burial Area (10/16/10)



Excavation of the Drain Line from the West Berm of the Emergency Basin (10/16/10)



Removal of the Berm Between the North Ditch and Emergency Basin
(10/16/10)



Phase II Footprint Cleanup Progress (10/18/10)



Phase II Footprint Cleanup Progress (North End) (10/18/10)



Phase II Footprint Cleanup Progress (from South of Sanitary Lagoon)
(10/18/10)



Bags of Sediment from Emergency Basin (10/18/10)



Roadbed Between Phase I and Phase II with Asphalt Removed
(10/18/10)



Excavation of Trench Along South Boundary of Phase II (10/20/10)



Installation of Gravel Between Phase II and Phase III (10/22/10)



Removal of Asphalt from Roadbed Between Phase I and Phase II
(10/18/10)



Installation of Stormwater Drain Pipe from No. 1 Burial Area to North
Calcium Fluoride Basin (10/26/10)



Haul Road from Clay Borrow Area (10/27/10)



Stockpile of Processed Sand for Drain Systems (10/27/10)



Collecting Sand Sample for Analysis (10/27/10)



Phase II Footprint Ready for Survey and Sampling (10/27/10)



Phase II Footprint Ready for Survey and Sampling (10/27/10)



Final Gamma Walkover of Phase II Footprint (10/28/10)



Sampling Phase II Footprint (10/28/10)



Sampling Phase II Footprint (10/28/10)



XRF Analysis of Phase II Footprint Samples (10/28/10)



Preparation of Pond 2 Area for Remediation (10/29/10)



Installation of Piezometer in Phase II Footprint (10/29/10)



Installation of Piezometer in Phase II Footprint (10/29/10)



Preparation of Drainage Pathway at South End of Phase II Cell Base
(11/1/10)



NRC Inspector Survey of Phase II Footprint (11/4/10)



Cleanup of Elevated Activity Area at Sample Point NRC-5 in the Phase II Footprint (11/5/10)



Cleanup of Elevated Activity Area at Sample Point NRC-5 in the Phase II Footprint (11/5/10)



Phase I Stormwater Berm Installation (11/8/10)



Phase II Groundwater Excavation Pit (11/15/10)



Fill of West End of No. 1 Burial Area (11/18/10)



Cleanup of Tejas Dozer for Free Release (11/23/10)



Pond 2 Remediation (11/23/10)



Placement of Pond 2 Spoils for Temporary Storage in Phase I Cell
(11/23/10)



Installation of New Monitor Well West of Pond 2 (11/23/10)



Pond 2 Remediation (12/2/10)



Backfilling No. 1 Burial Area (12/2/10)



Placement and Compaction of Phase II Cell Base (12/20/10)



Construction of West Perimeter Berm of Phase II Cell Base (12/20/10)



South Side of Phase II Cell Base (12/20/10)



Survey of Phase II Subgrade Surface (1/5/11)



Placement of Pond 2 Material in Phase I Cell for Temporary Storage
(1/5/11)



Placement and Compaction of Clay for Phase II Cell Base (1/12/11)



Receipt and Storage of Phase II Liner Material (1/13/11)



Pond 2 Remediation Progress and Moving Pump (1/18/11)



Nuclear Density Testing of Phase II Cell Base (1/29/11)



Placement of Phase I Cell Temporary Cap (1/28/11)



Placement of Phase I Cell Temporary Cap (1/29/11)



Placing haul road and berm between Phase II Cell and Stormwater Capture. This will become the west perimeter berm for Phase II.



Installing geo-felt on Phase I Cell.



Installing geo-felt on west side of Phase II work area.



Installing compacted clay to tie Phase II into Phase I. (3/23/11)



Adding water to Phase II clay base to condition for testing. (3/24/11)



Removing non-conforming material from Phase II. (3/31/11)



Non-conforming material removed from Phase II used as fill in the sump area. (3/31/11)



Non-conforming material replaced with clay. (4/1/11)



Conditioning of clay placed into Phase II. (4/5/11)



Phase II progress. (4/20/11)



Survey of Phase II Cell Base. (4/21/11)



Verification of Leak Detection Sand Depth (5/9/11)



Installation of Phase II Leak Detection Sand (5/11/11)



Installation of coarse sand around Leak Detection Piping (5/16/11)



Erosion of Leak Detection Sand due to rain. (5/25/11)



Repair of erosion of Leak Detection Sand (6/1/11)



Stormwater accumulation in Pond 2 (6/1/11)



Progress of remediation of Pond 2 (7/8/11)



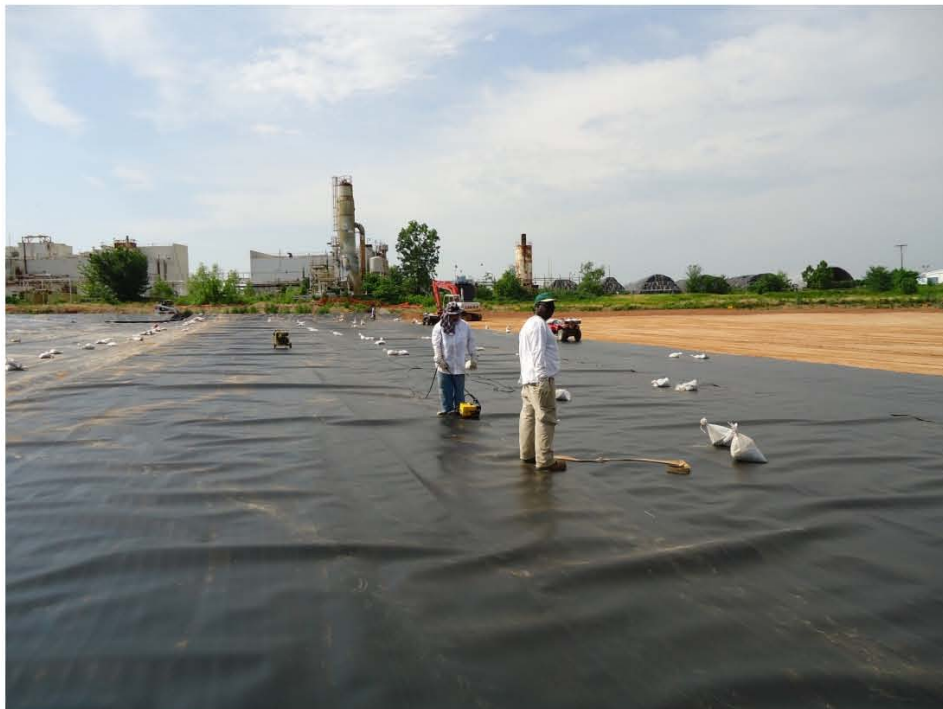
Installation of Phase II Liner (6/9/11)



Pressure Testing Welded Seams in Phase II Liner (6/13/11)



Phase II Liner Installation Showing Overlap of Seams (6/14/11)



Heat Welding Seams in Phase II Liner (6/14/11)



Installing Liner in Phase II Sumps (6/18/11)



Installation of Boot for Phase II Leachate Collection Pipe (6/19/11)



Layout of Phase II Leachate Collection Piping (6/20/11)



Installation of Phase II Liner to Tie In with Phase I (Includes covering the 40-mil Liner on North End of Phase I)(6/23/11)



Installation of Phase II Leachate Collection Piping (6/23/11)



Vacuum Testing Extrusion Welded Seams in Phase II (6/23/11)



Vacuum Testing Phase II Extrusion Welded Seams (Leak Noted for Repair)(6/23/11)



Repair of Phase I South Berm Damaged by Truck (6/24/11)



Installation of Coarse Sand Around Phase II Leachate Collection Piping
(6/28/11)



Leak Testing Phase II Liner Repair (7/22/11)



Placement of Calcium Fluoride Sludge/Flyash in Phase II (7/22/11)



Excavation of Calcium Fluoride/Flyash from Calcium Fluoride Clarifier Area (7/27/11)



Construction of Phase II Stormwater Berm. Clean Material on the Outer Slope and Calcium Fluoride/Flyash on the Inside (7/27/11)



Installation of Geo-felt on Stormwater Berm for Erosion Control 7/30/11)



Loading Debris in Preparation for Disposal in Phase II Cell (8/9/11)



Staging Debris for Burial in Phase II Cell (8/9/11)