

WLS
COL 2.4-4

LEGEND:

- MW-1209 ● BEDROCK MONITORING WELL
- MW-1218 ⦿ SHALLOW MONITORING WELL
- MW-1209A
MW-1209 ● MONITORING WELL NEST
BEDROCK AND SHALLOW (A)

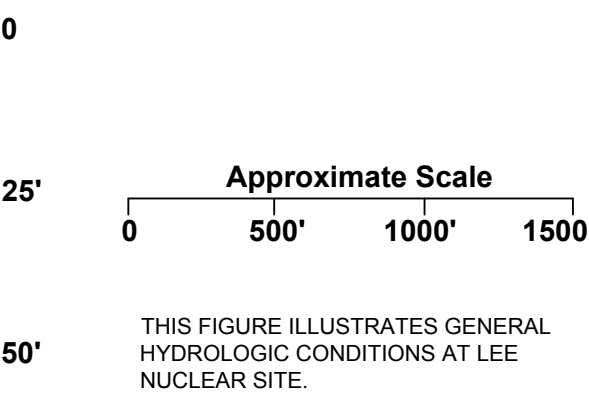
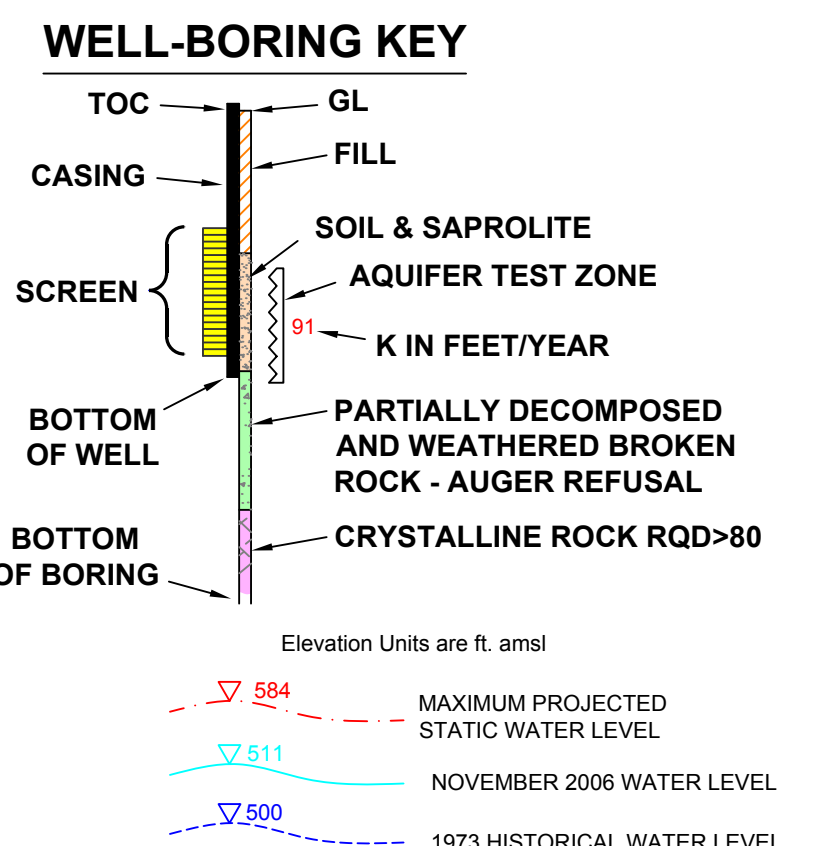
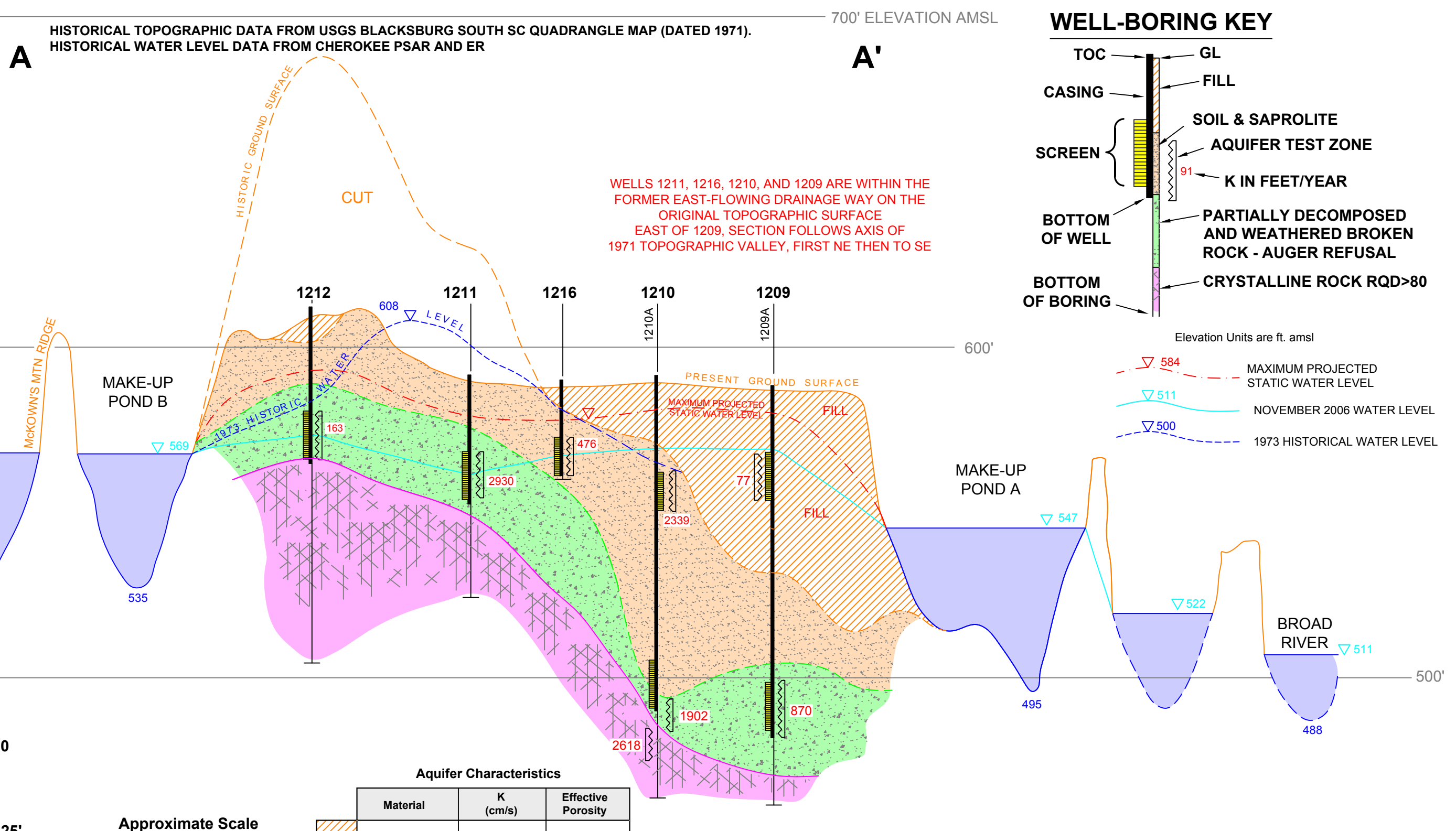
**WILLIAM STATES LEE III
NUCLEAR STATION UNITS 1 & 2**

Cross Sections of Lee Nuclear Site:
Index Map

FIGURE 2.4.12-205
Sheet 1 of 4

Rev 1

Datum: GCS North American 1983
Projection: NAD 1983 UTM Zone 17N



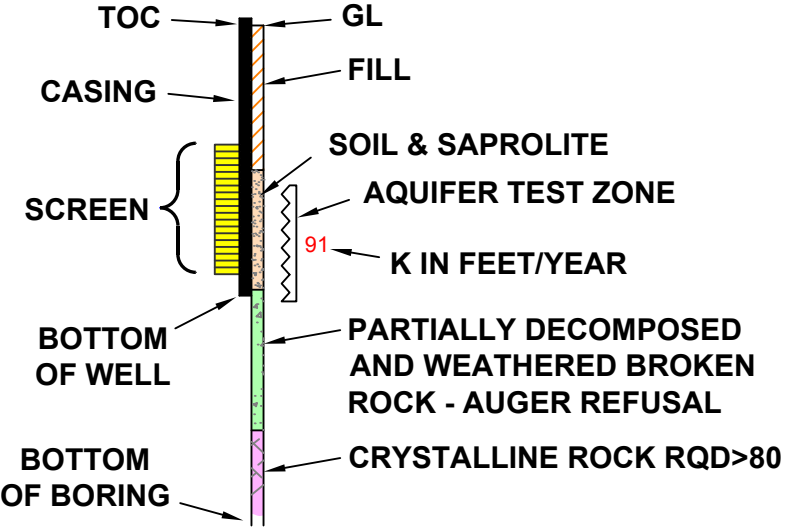
Aquifer Characteristics

Material	K (cm/s)	Effective Porosity
Fill Material	7.0×10^{-5}	9%
Soil and Saprolite	4.5×10^{-4}	20%
Partially Weathered Rock	1.4×10^{-3}	8%

Well construction details are provided in Table 2.4.12-201.

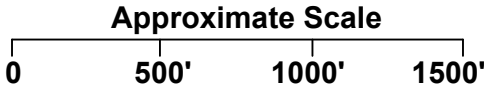
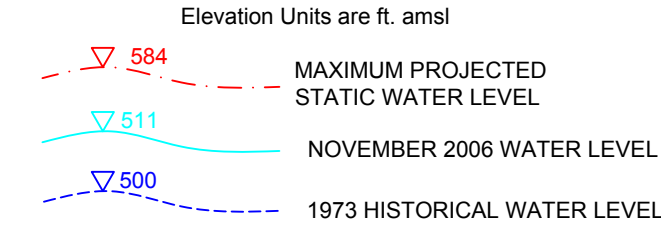
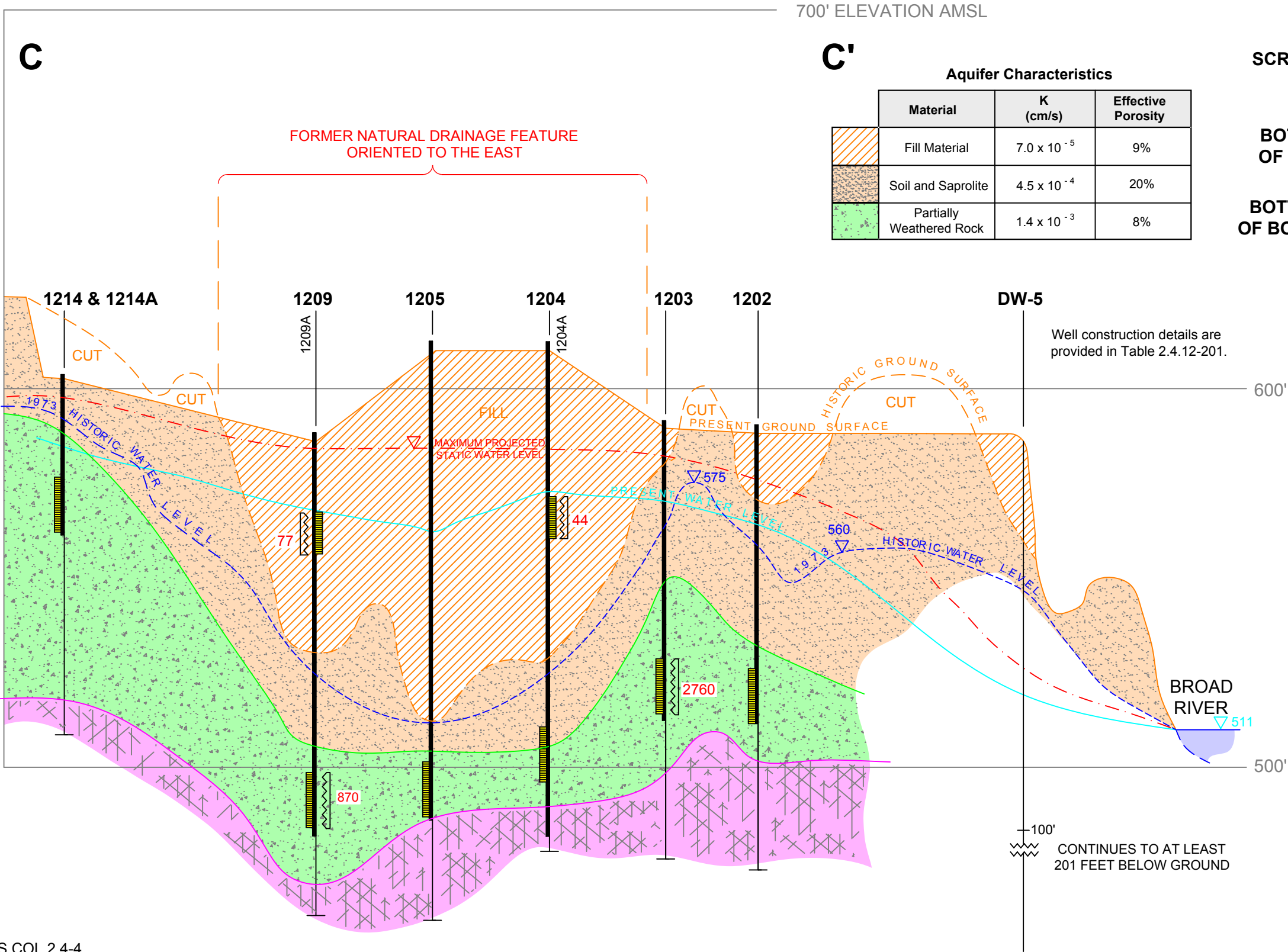
HISTORICAL TOPOGRAPHIC DATA FROM USGS BLACKSBURG SOUTH SC QUADRANGLE MAP (DATED 1971).
HISTORICAL WATER LEVEL DATA FROM CHEROKEE PSAR AND ER

WELL-BORING KEY

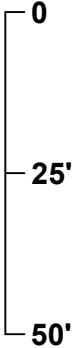


Aquifer Characteristics

Material	K (cm/s)	Effective Porosity
Fill Material	7.0×10^{-5}	9%
Soil and Saprolite	4.5×10^{-4}	20%
Partially Weathered Rock	1.4×10^{-3}	8%



THIS FIGURE ILLUSTRATES GENERAL
HYDROLOGIC CONDITIONS AT LEE
NUCLEAR SITE.



WILLIAM STATES LEE III
NUCLEAR STATION UNITS 1 & 2

Cross Sections of Lee Nuclear Site:
C - C'

FIGURE 2.4.12-205
Sheet 4 of 4
Rev 4