



Steam Dump Control System

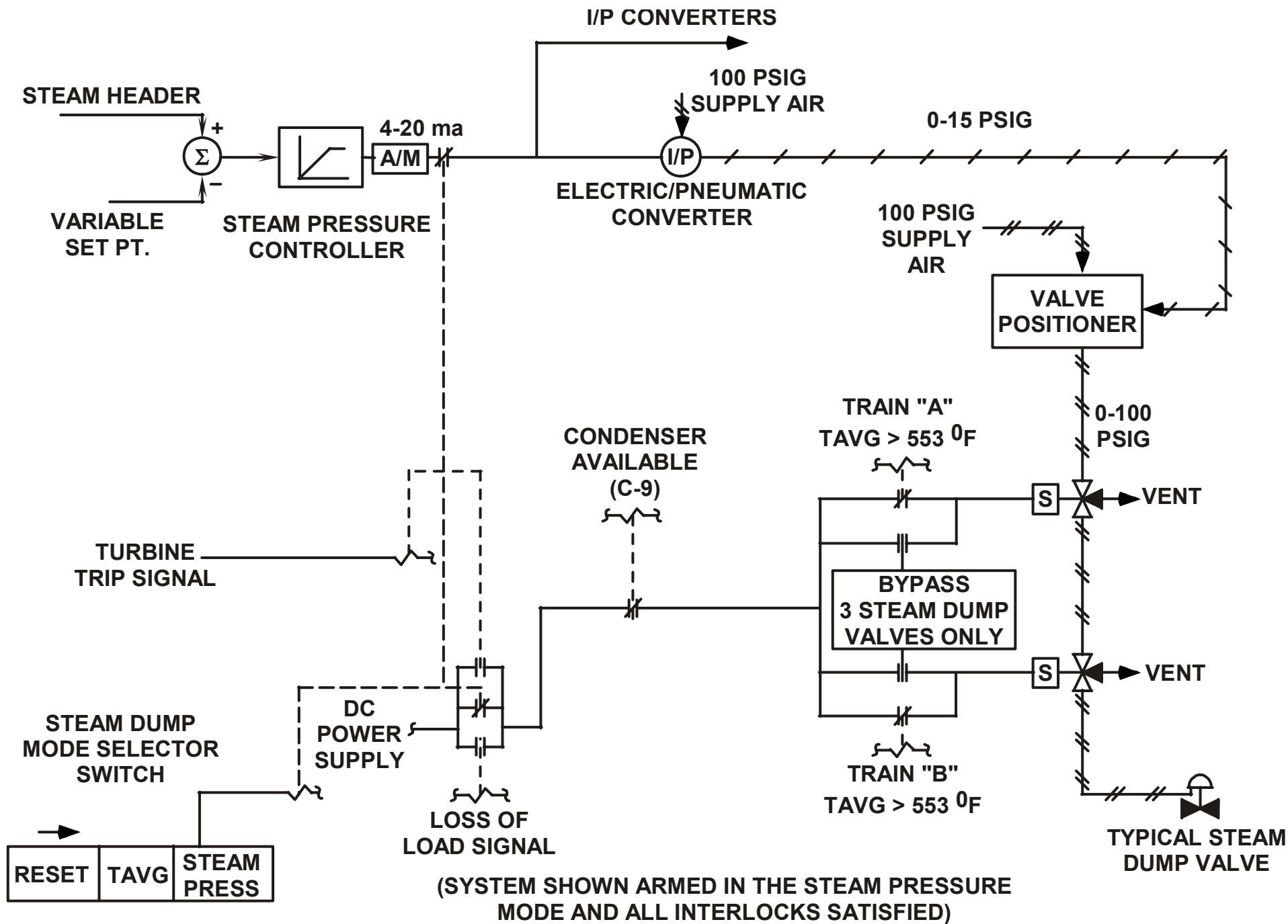
Section 11.2

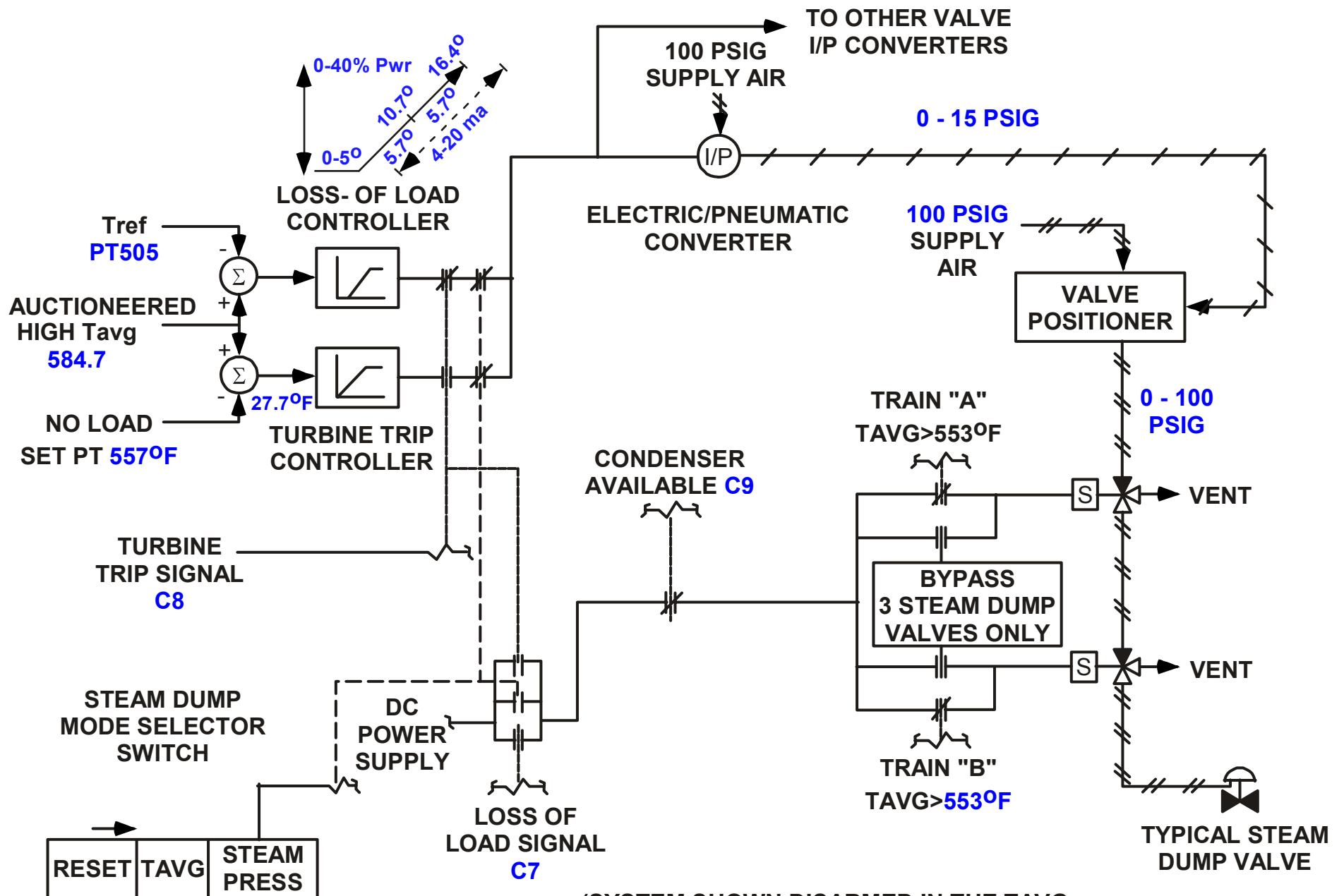
Objectives

- List the purposes of the steam dump control system.
- Briefly describe how each of the purposes is accomplished.
- Discuss the inputs to the steam dump control system.
- List and explain the purposes of the steam dump control arming signals and interlocks.

Purposes

- Remove excess energy from the RCS during load reductions in excess of Control Rod Design (5%/min, 10% Step) to programmed Tave for new load.
- Dump capacity avoids lifting SG Safety Valves following a turbine trip and reactor trip from 100% power.
- Typical Westinghouse plants handle 50% load reject. (40% steam dumps, 10% Rods)





(SYSTEM SHOWN DISARMED IN THE TAVG MODE OF CONTROL, NO TURBINE TRIP SIGNAL PRESENT AND ALL INTERLOCKS SATISFIED)

Figure 11.2-3 Steam Dump Control System

