



# Incore Instrumentation System

## Chapter 9.2

# Objectives

1. State the purposes of the incore instrumentation system.
2. Briefly describe the two types of incore instrumentation and the information available from each.
3. Describe the method used to detect flux thimble leakage.
4. Deleted
5. List the uses of the data obtained from the incore instrumentation.

Incore instrumentation provides two types of indication at selected core locations.

- Neutron flux distribution
- Fuel assembly outlet temperatures

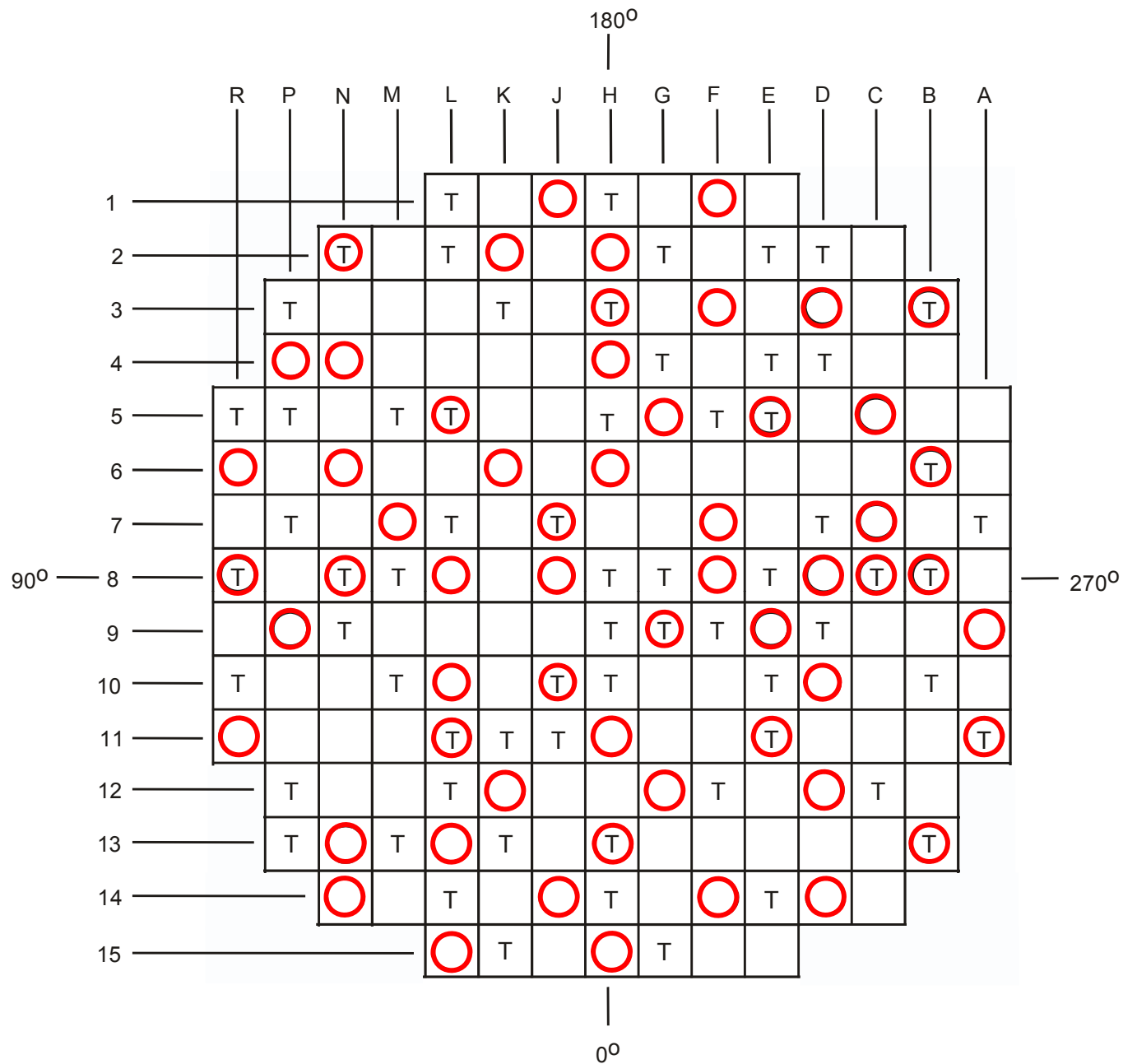


Figure 9.2-1

○ = FLUX THIMBLE  
T = THERMOCOUPLE

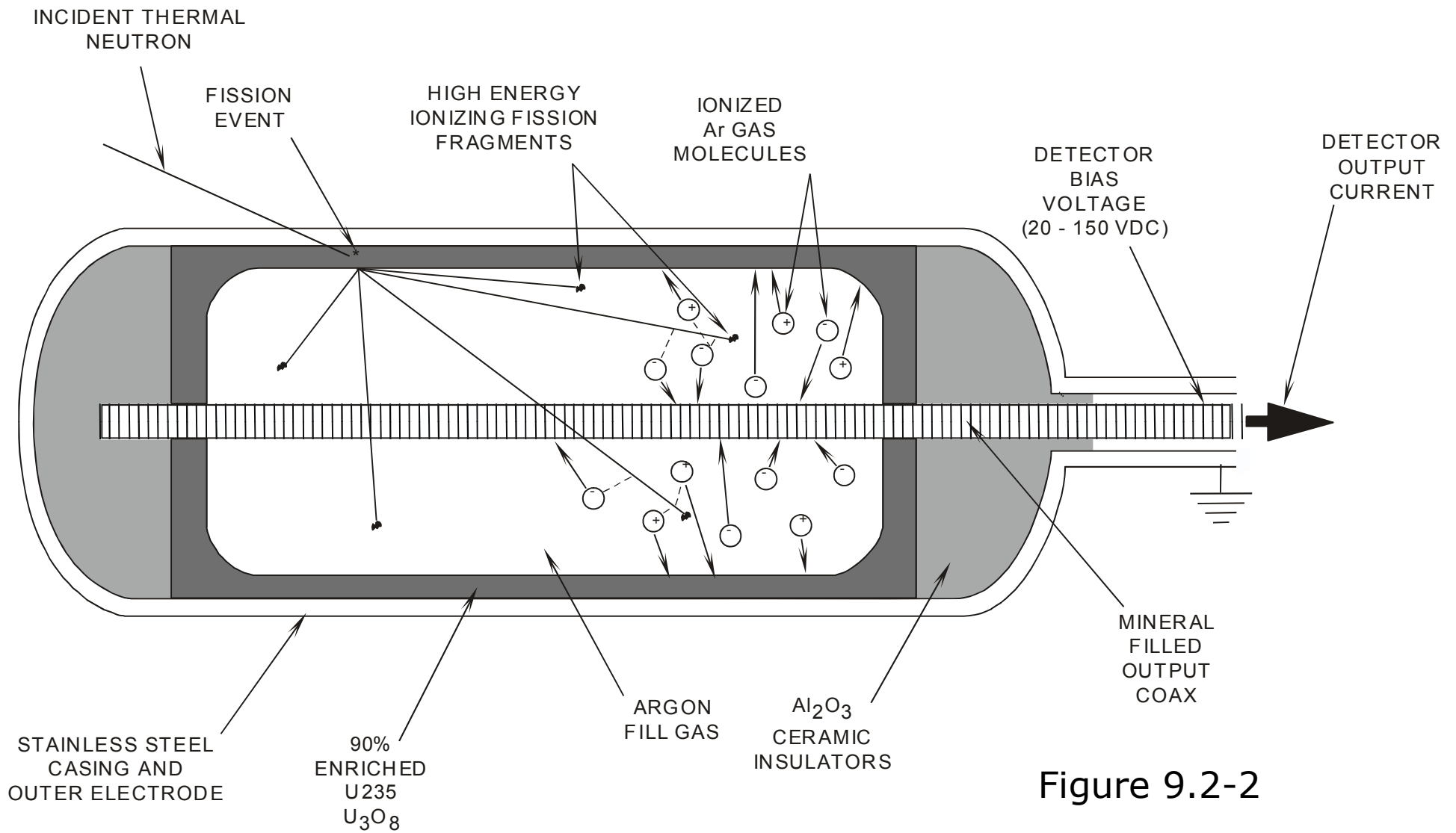
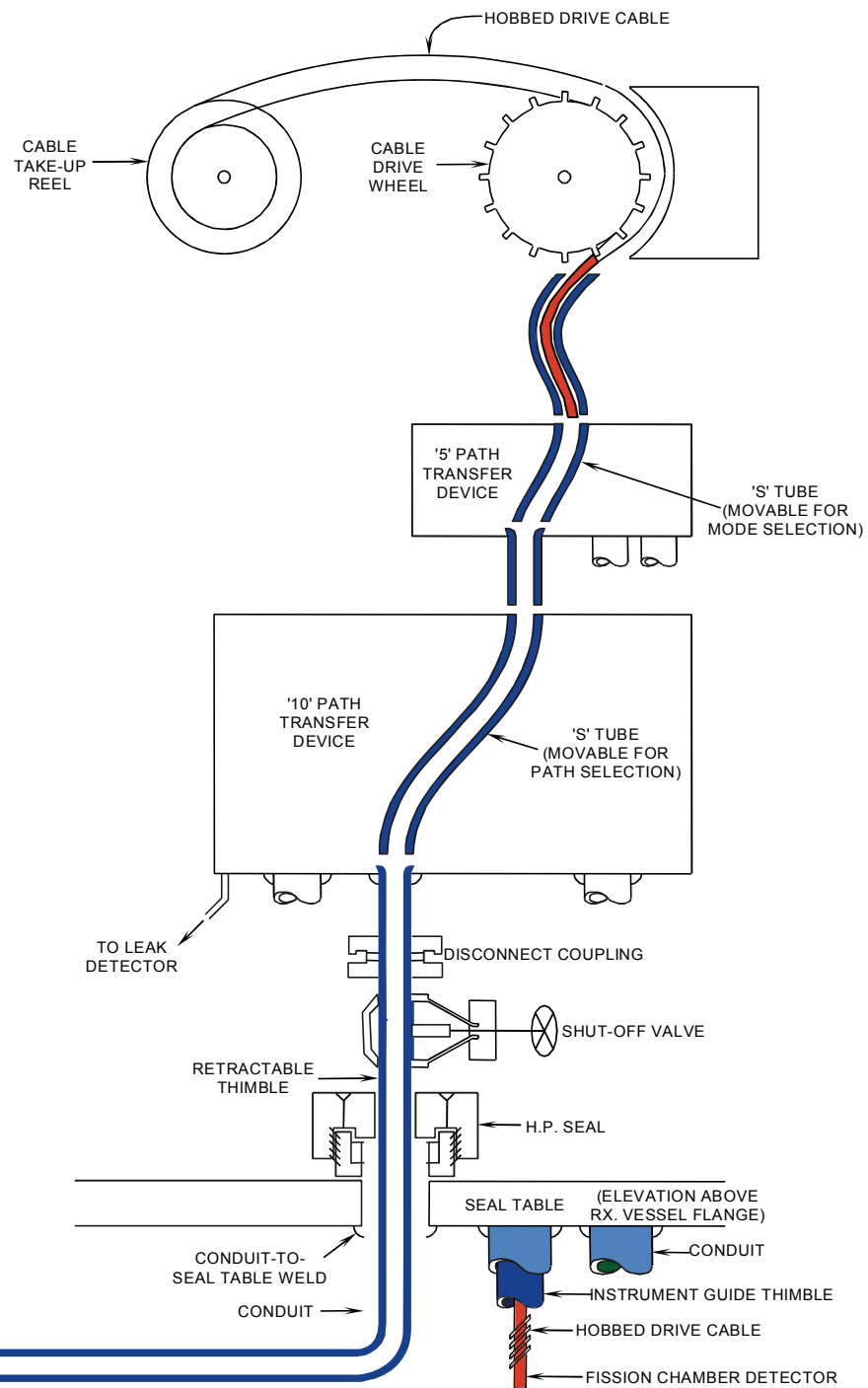
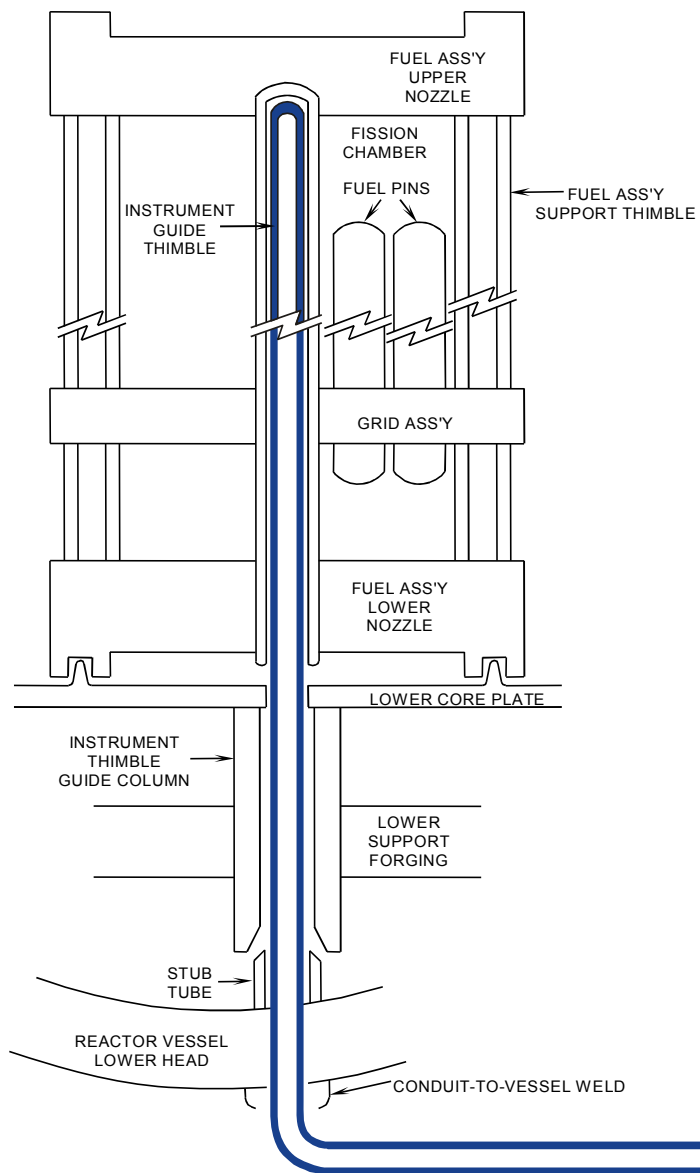


Figure 9.2-2



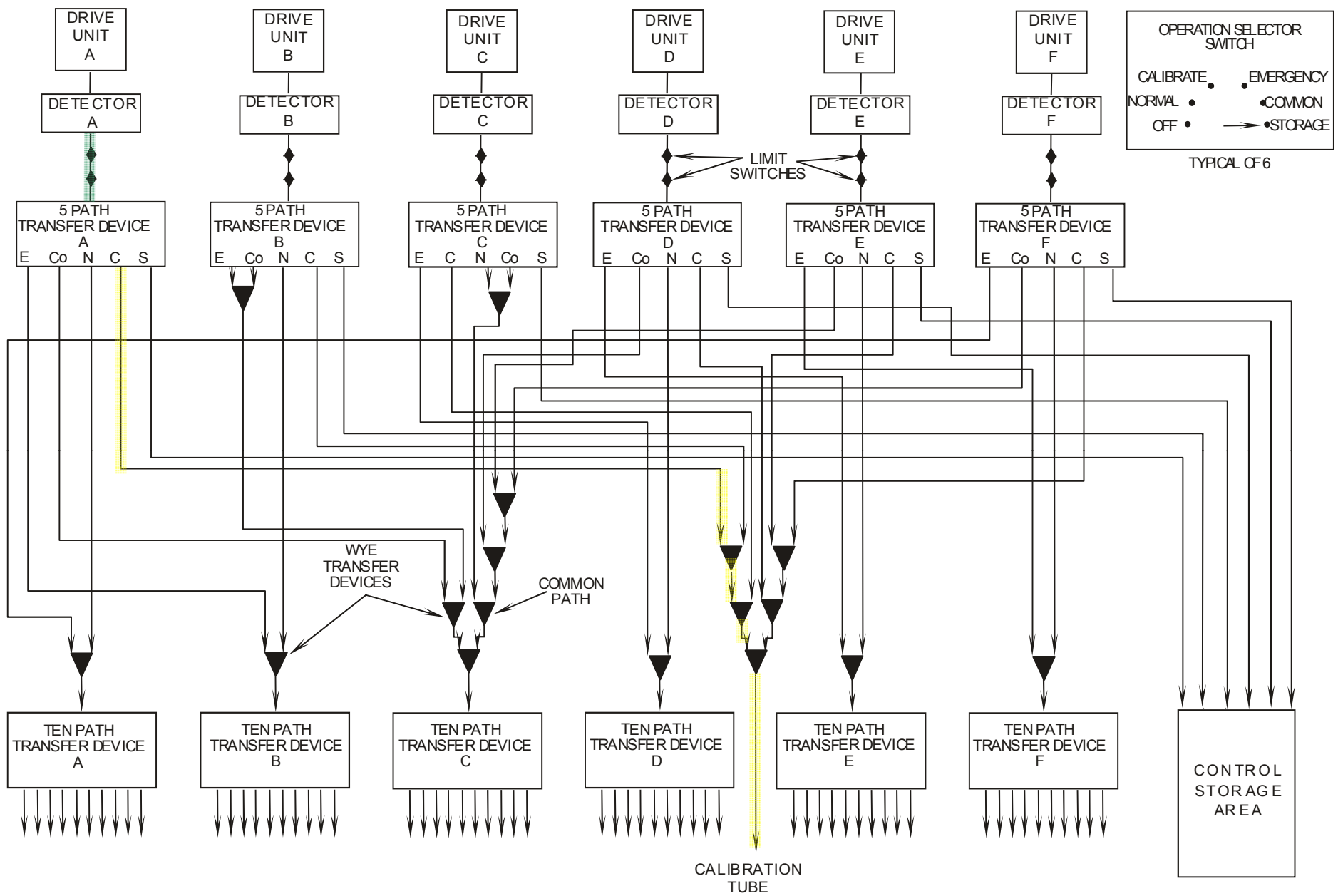


Figure 9.2-4

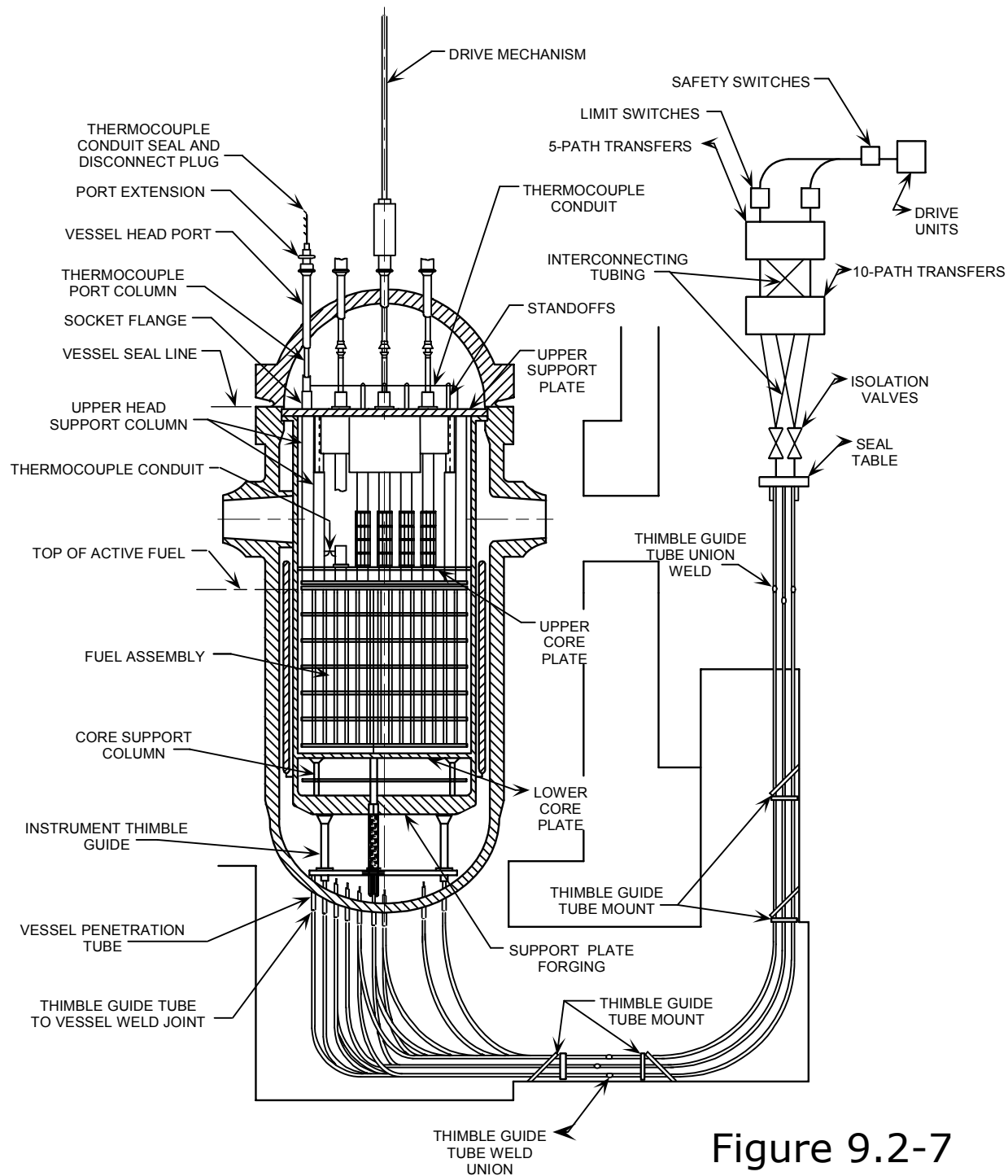


Figure 9.2-7

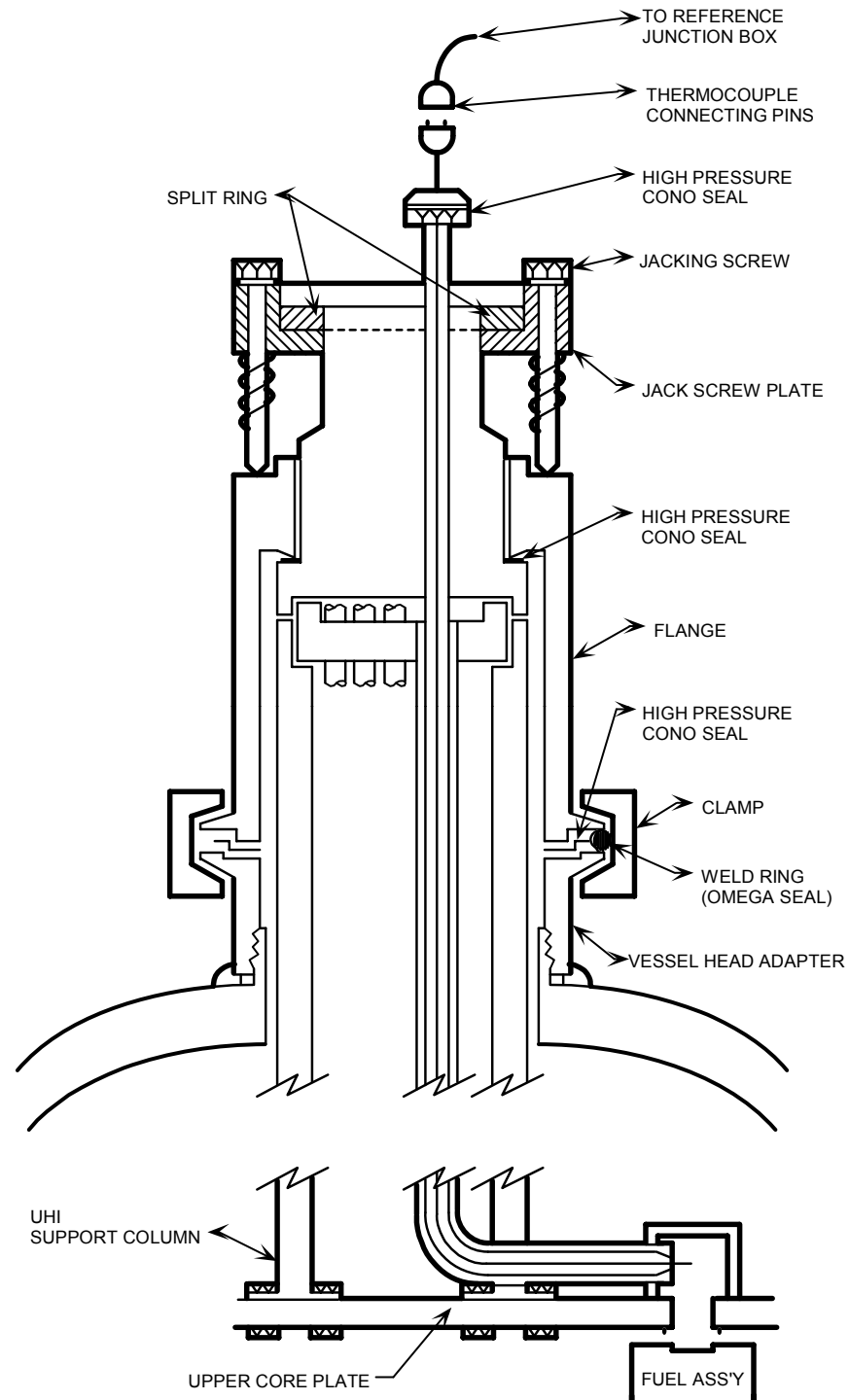


Figure 9.2-8

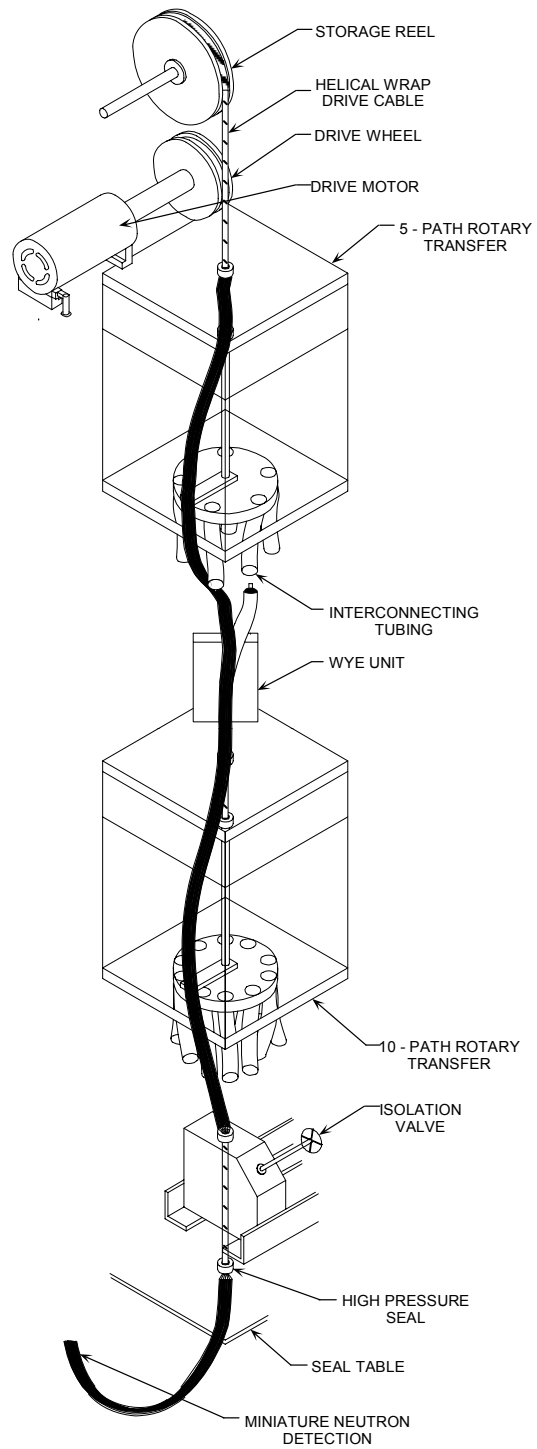
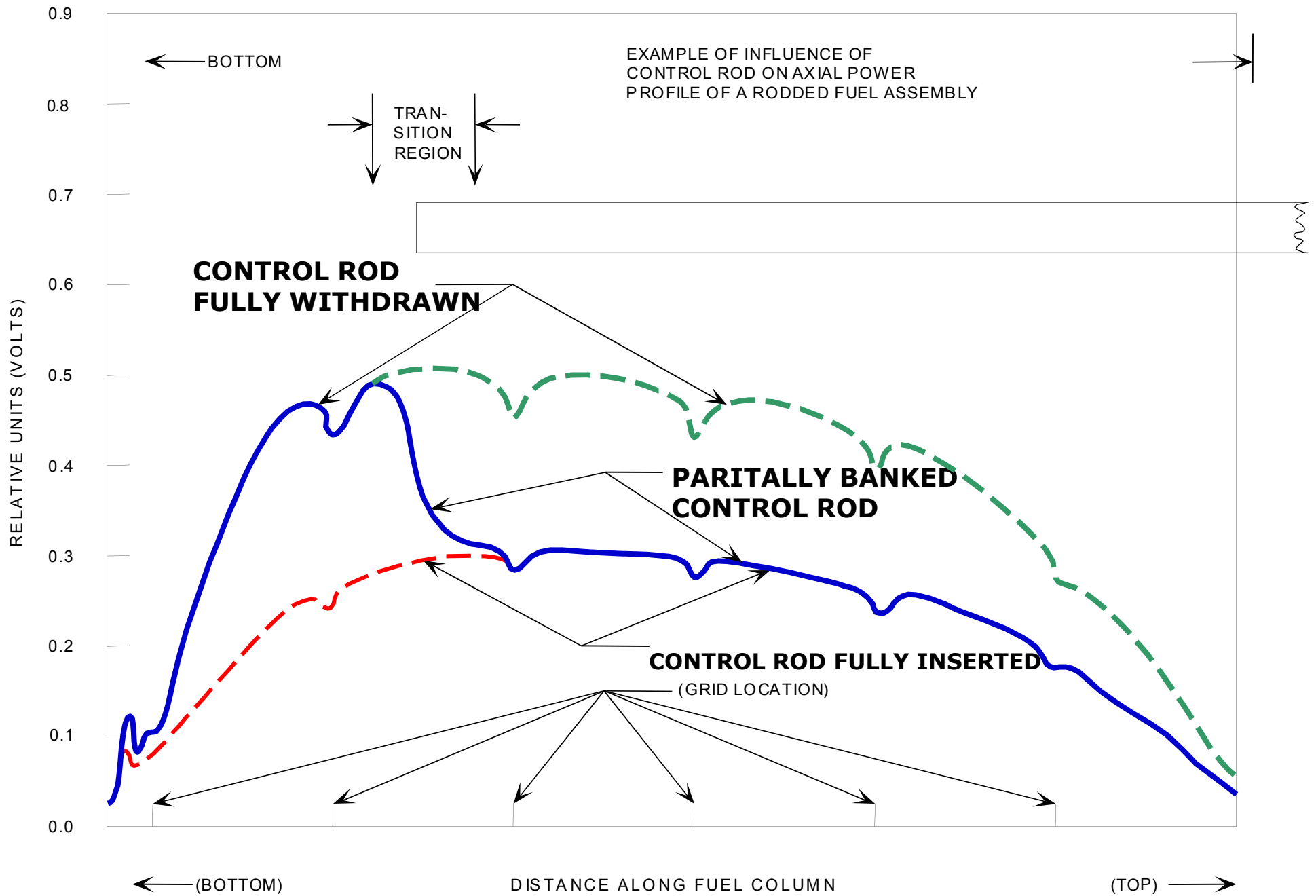


Figure 9.2-9



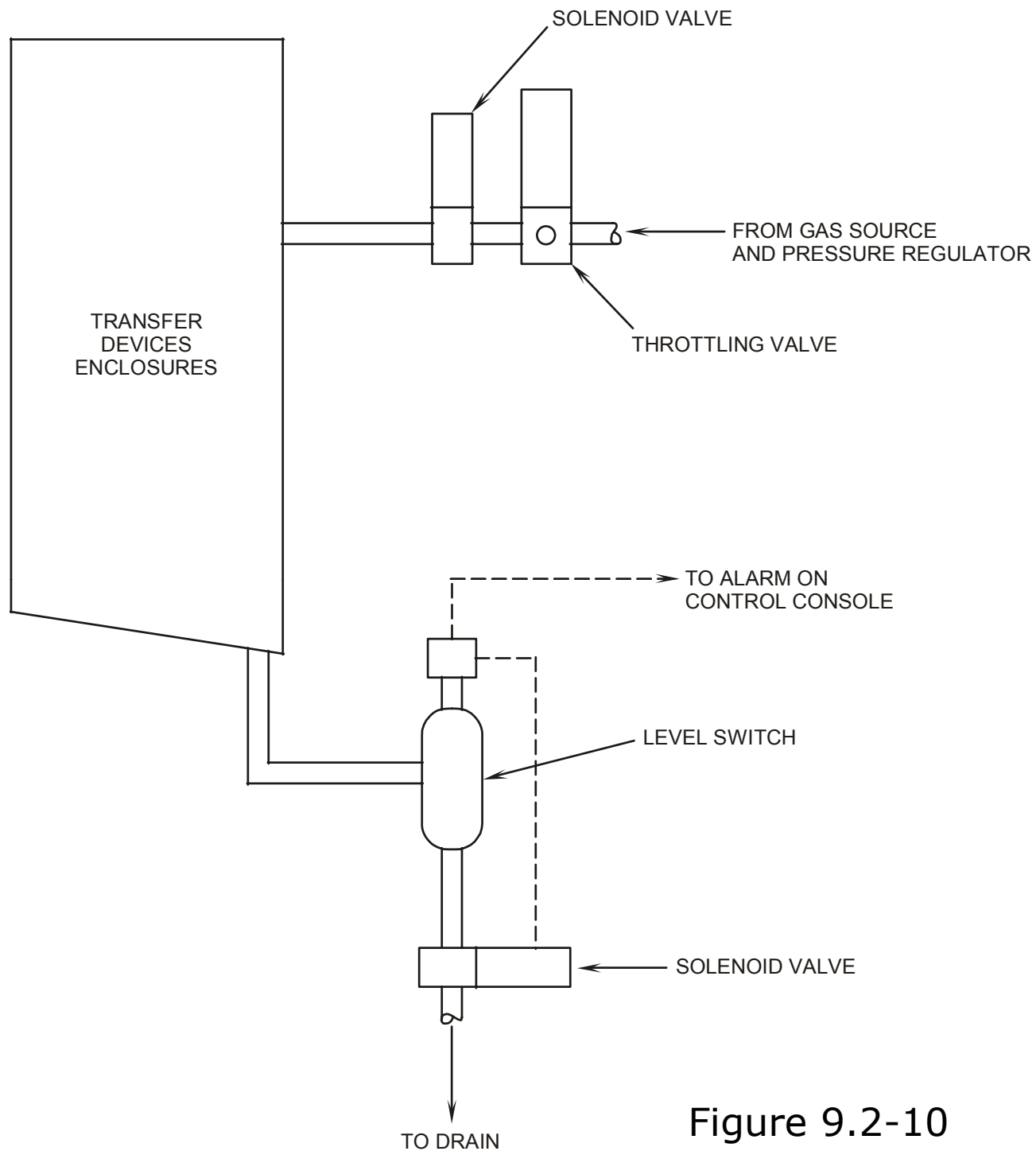


Figure 9.2-10