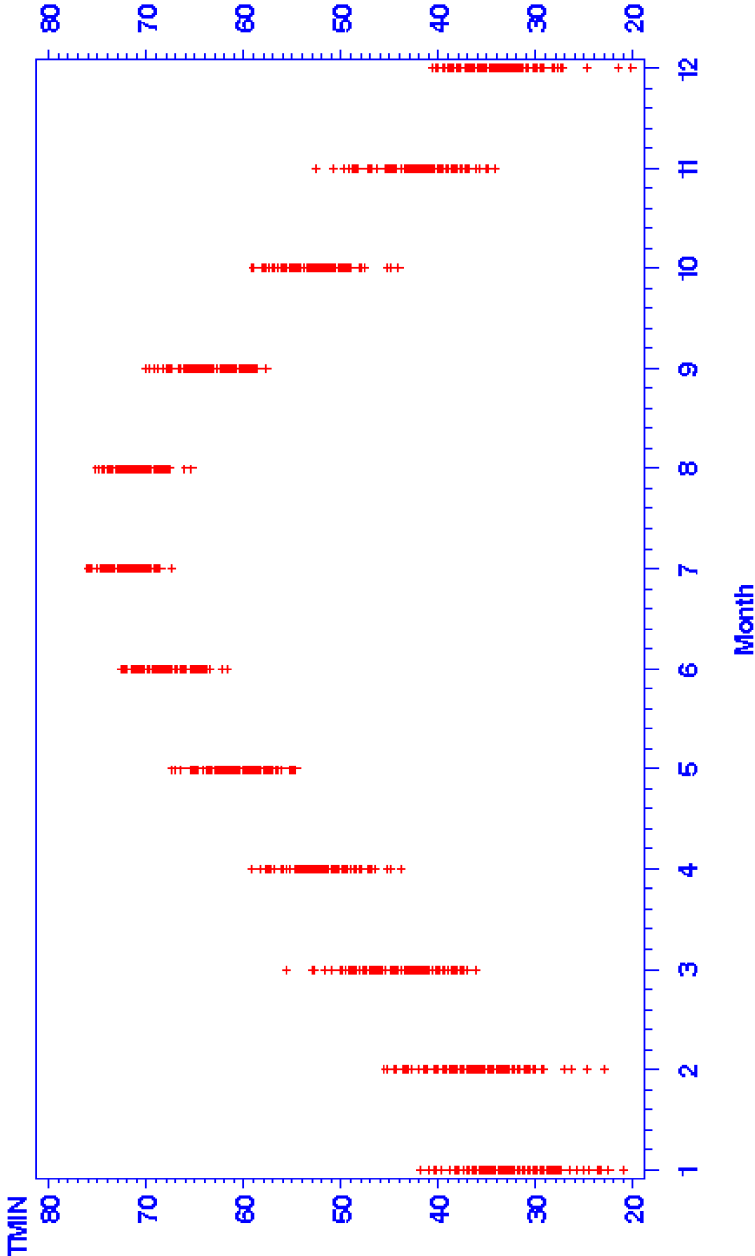


Comanche Peak Nuclear Power Plant, Units 3 & 4  
COL Application  
Part 2, FSAR

USHCN 419532, WEATHERFORD, TX  
Monthly mean minimum temperature (F) 1882 – 2005



Source: CN Williams Jr., MJ Menne, RS Vose, DR Easterling, NOAA, National Climatic Data Center, Asheville, NC  
Reference: U.S. Historical Climatology Network, (U.S. HCN), Revision 3, Monthly Temperature and Precipitation Data (data period 1882-2005)  
[http://cdiac.ornl.gov/cgi-bin/broker?\\_PROGRAM=prog.climate\\_monthly\\_sas&\\_SERVICE=default&id=412598](http://cdiac.ornl.gov/cgi-bin/broker?_PROGRAM=prog.climate_monthly_sas&_SERVICE=default&id=412598), accessed 2/28/2008.

Figure 2.3-318 Weatherford Monthly Minimum Temperature