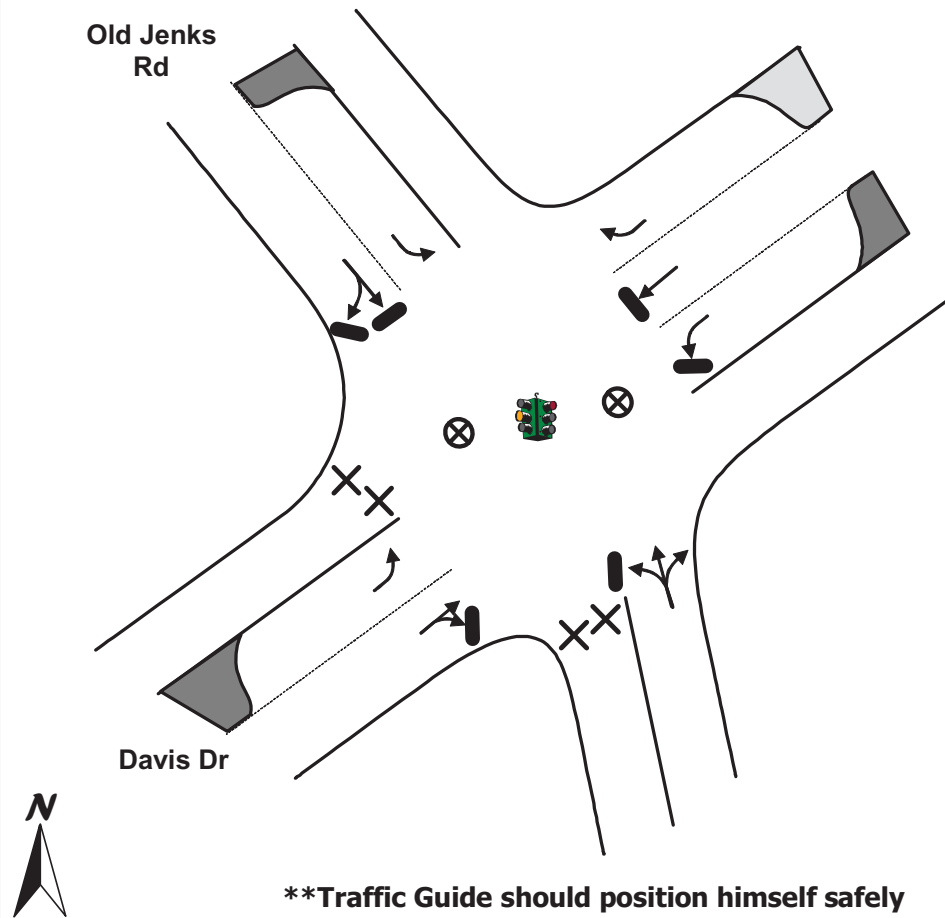


TCP

TOWN: APEX
LOCATION: Davis Dr & Old Jenks Rd
TCP ID: E-24
SUB-ZONE: E



Key

- MOVEMENT FACILITATED
- MOVEMENT DISCOURAGED/DIVERTED
- ⊗ TRAFFIC GUIDE
- STOP SIGN
- ⊗ TRAFFIC BARRICADE
- 2 PER LANE (LOCAL ROADS AND RAMPS)
- 4 PER LANE (FREEWAY AND RAMPS)
- TRAFFIC SIGNAL
- ● TRAFFIC CONES SPACED TO DISCOURAGE TRAFFIC BUT ALLOW PASSAGE (3 PER LANE): ● ● 8 ft

ACTIONS TO BE TAKEN

1. Interdict and divert southbound traffic on Old Jenks Rd
2. Interdict and divert southbound traffic on Davis Dr

MANPOWER/EQUIPMENT ESTIMATE

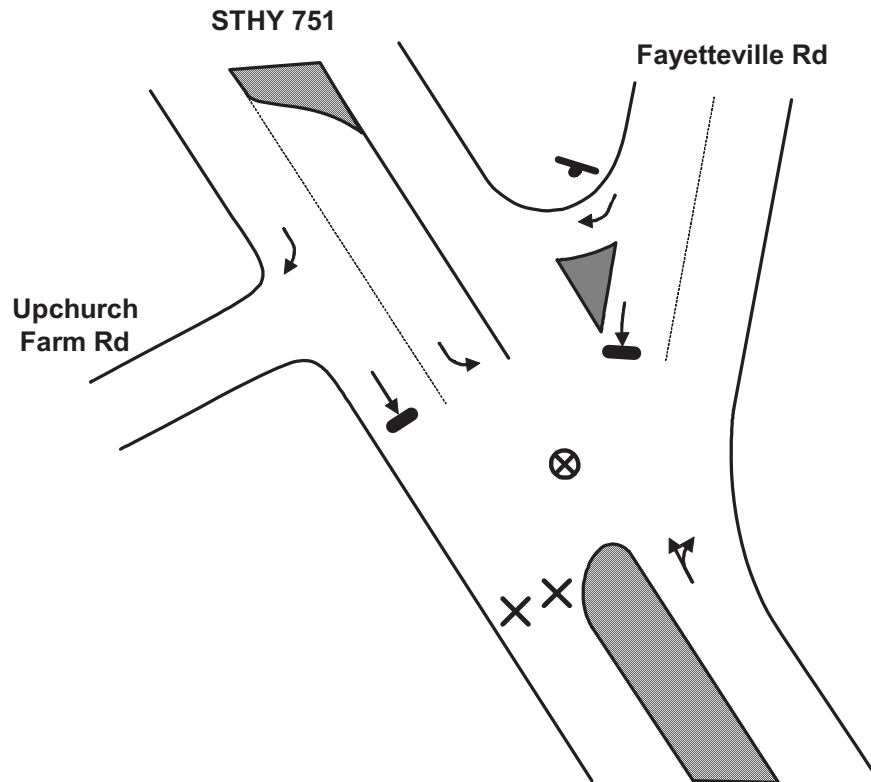
- 2 Traffic Guide(s)
- 4 Traffic Barricades

LOCATION PRIORITY

3

TCP

TOWN: CHAPEL HILL
LOCATION: State Highway 751 & Fayetteville Rd
TCP ID: Q1-01



****Traffic Guide should position himself safely**

Key

- MOVEMENT FACILITATED
- MOVEMENT DISCOURAGED/DIVERTED
- ⊗ TRAFFIC GUIDE
- STOP SIGN
- × TRAFFIC BARRICADE
- 2 PER LANE (LOCAL ROADS AND RAMP)
- 4 PER LANE (FREEWAY AND RAMP)
- TRAFFIC SIGNAL
- ● TRAFFIC CONES SPACED TO DISCOURAGE TRAFFIC BUT ALLOW PASSAGE (3 PER LANE): ● ● ● 8 ft

ACTIONS TO BE TAKEN

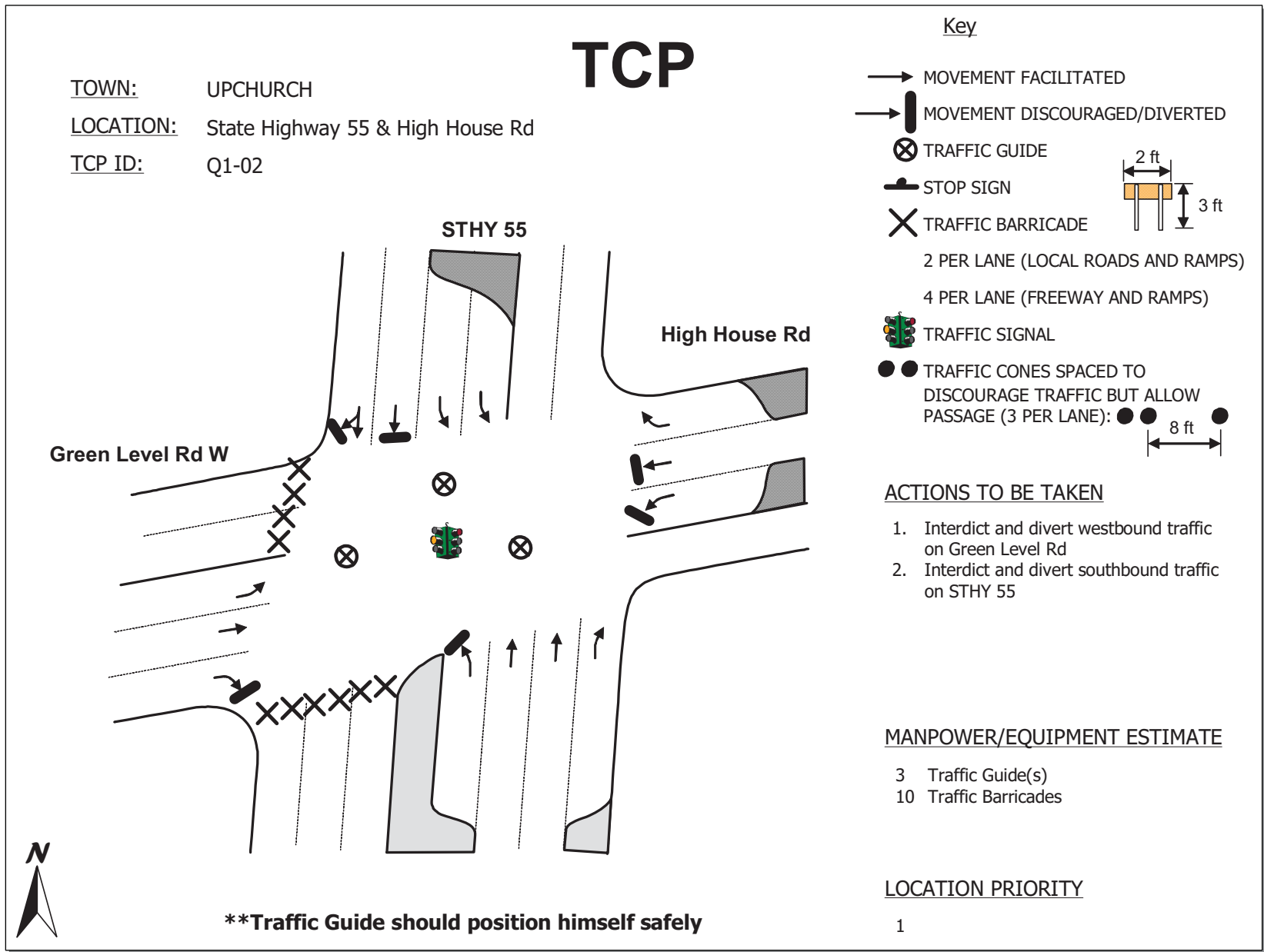
1. Interdict and divert southbound traffic on STHY 751

MANPOWER/EQUIPMENT ESTIMATE

- 1 Traffic Guide(s)
- 2 Traffic Barricades

LOCATION PRIORITY

3

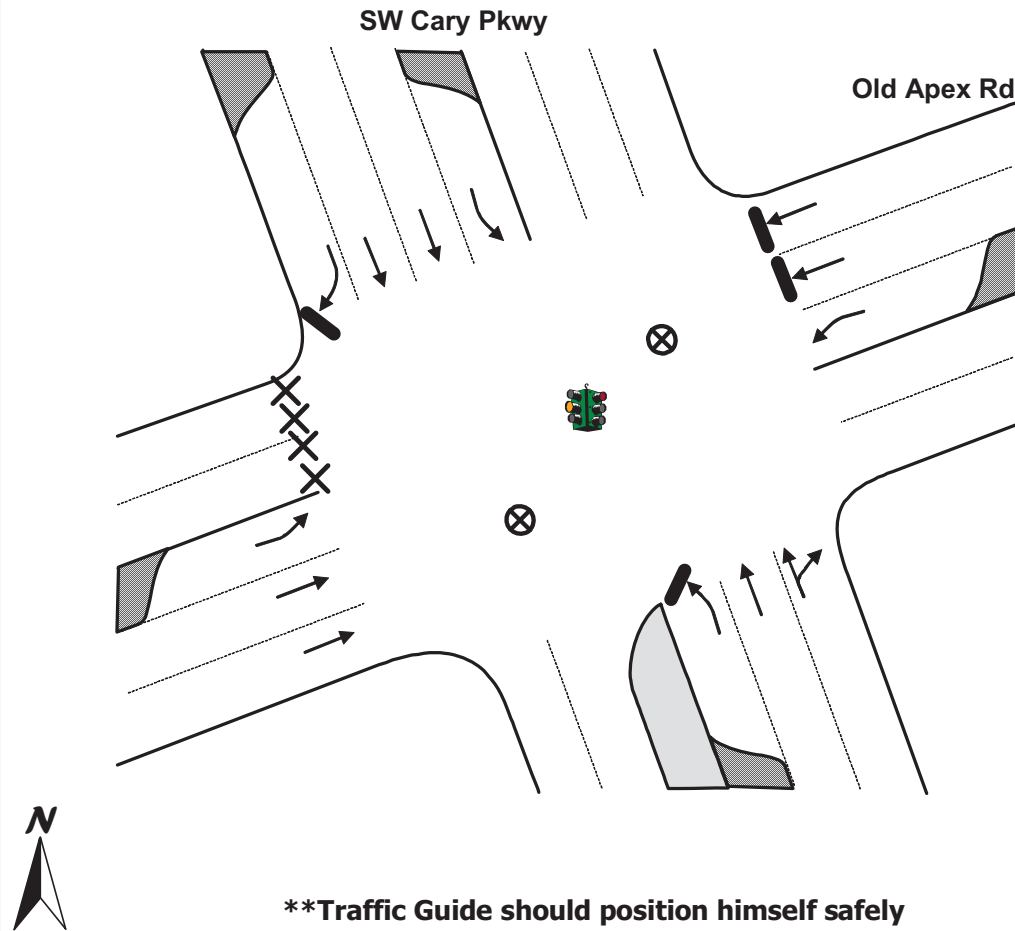


TCP

TOWN: APEX

LOCATION: Southwest Cary Parkway & Old Apex Rd

TCP ID: Q1-03



Key

- MOVEMENT FACILITATED
- MOVEMENT DISCOURAGED/DIVERTED
- ⊗ TRAFFIC GUIDE
- STOP SIGN
- ⊗ TRAFFIC BARRICADE
- 2 PER LANE (LOCAL ROADS AND RAMP)
- 4 PER LANE (FREEWAY AND RAMP)
- TRAFFIC SIGNAL
- ● TRAFFIC CONES SPACED TO DISCOURAGE TRAFFIC BUT ALLOW PASSAGE (3 PER LANE): ● ● ● 8 ft

ACTIONS TO BE TAKEN

1. Interdict and divert westbound traffic on Old Apex Rd

MANPOWER/EQUIPMENT ESTIMATE

- 2 Traffic Guide(s)
- 4 Traffic Barricades

LOCATION PRIORITY

3

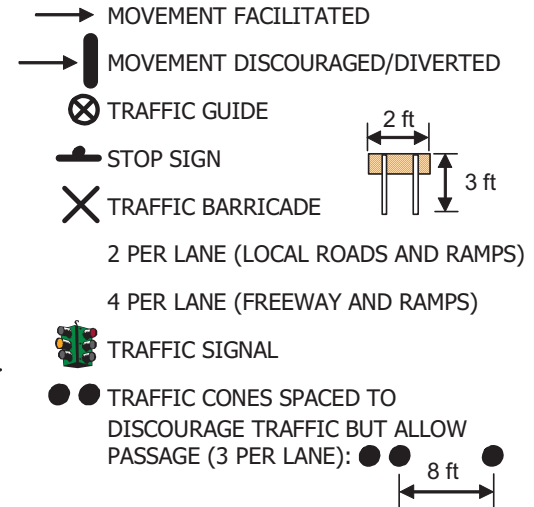
TCP

TOWN: APEX

LOCATION: U.S. Highway 64 & U.S. Highway 1 (South) Access Ramps

TCP ID: Q1-04A

Key



ACTIONS TO BE TAKEN

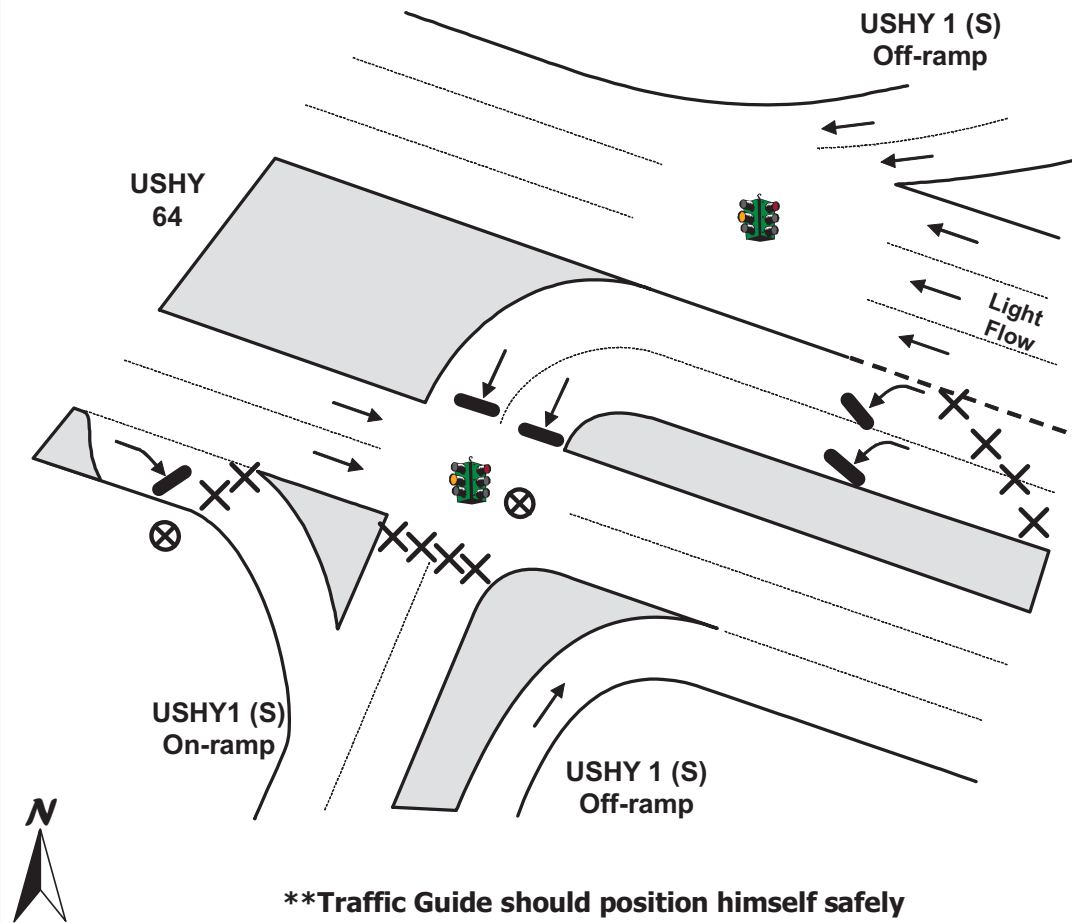
1. Interdict and divert access to southbound USHY 1

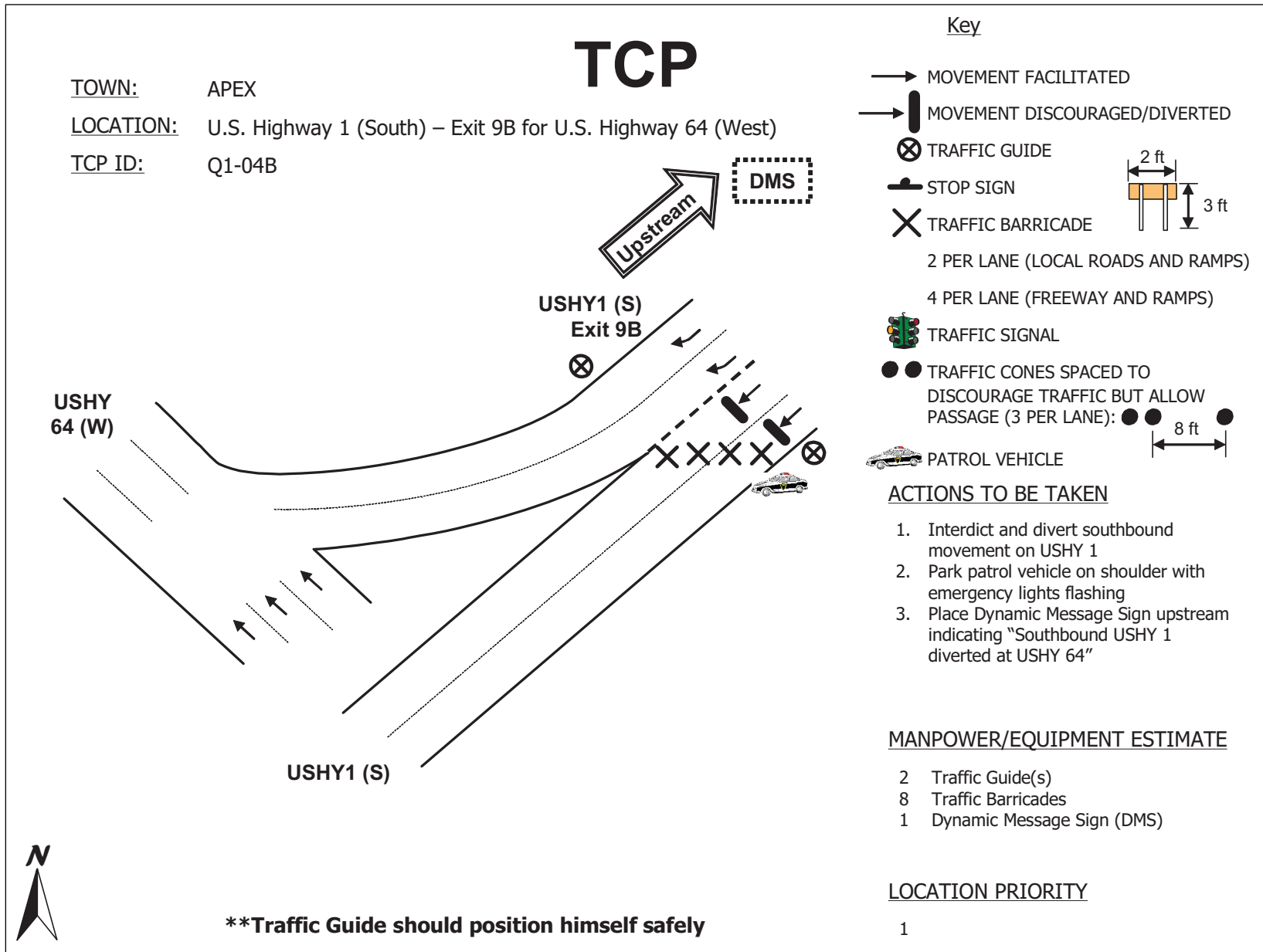
MANPOWER/EQUIPMENT ESTIMATE

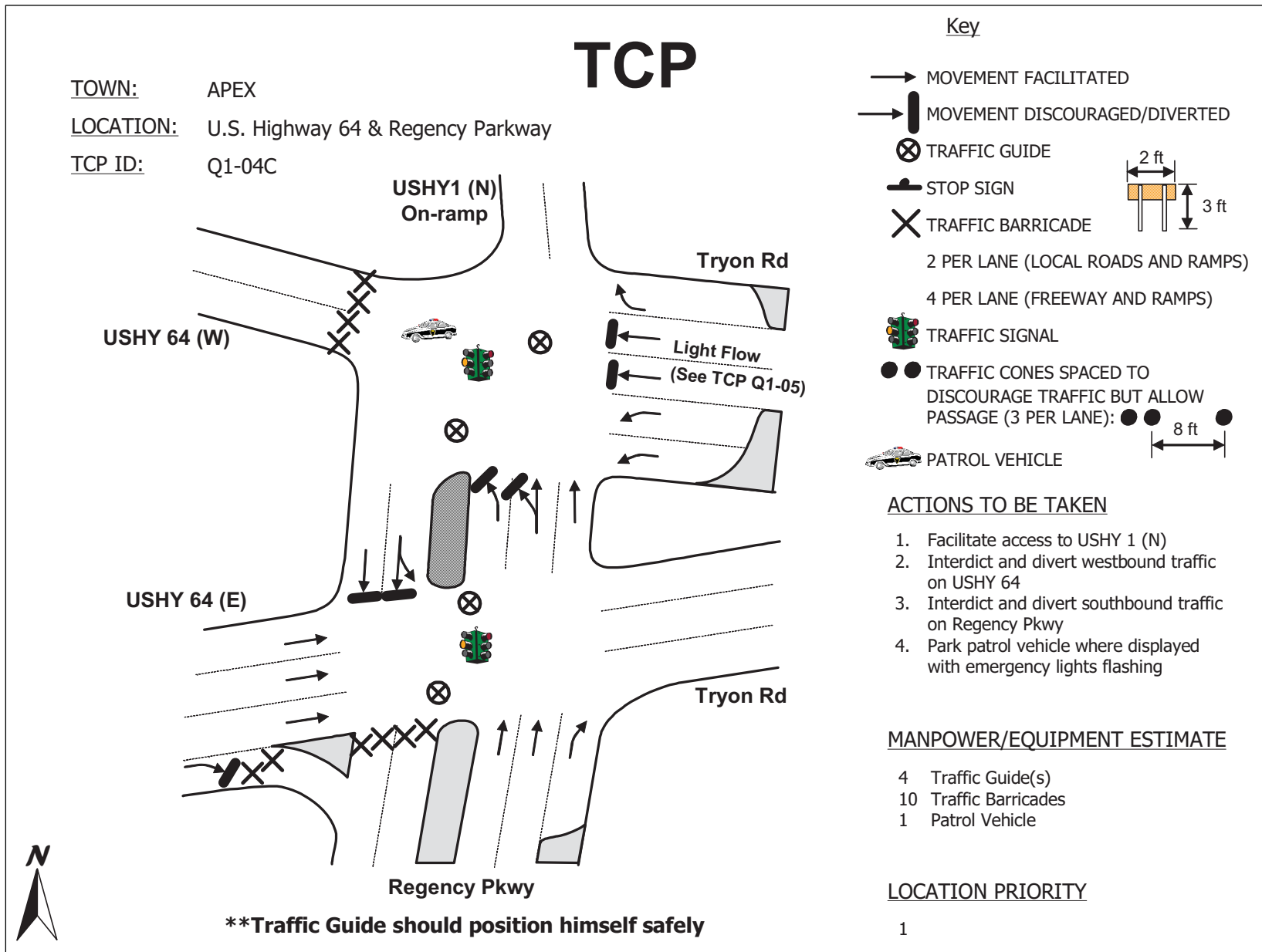
- 2 Traffic Guide(s)
 10 Traffic Barricades

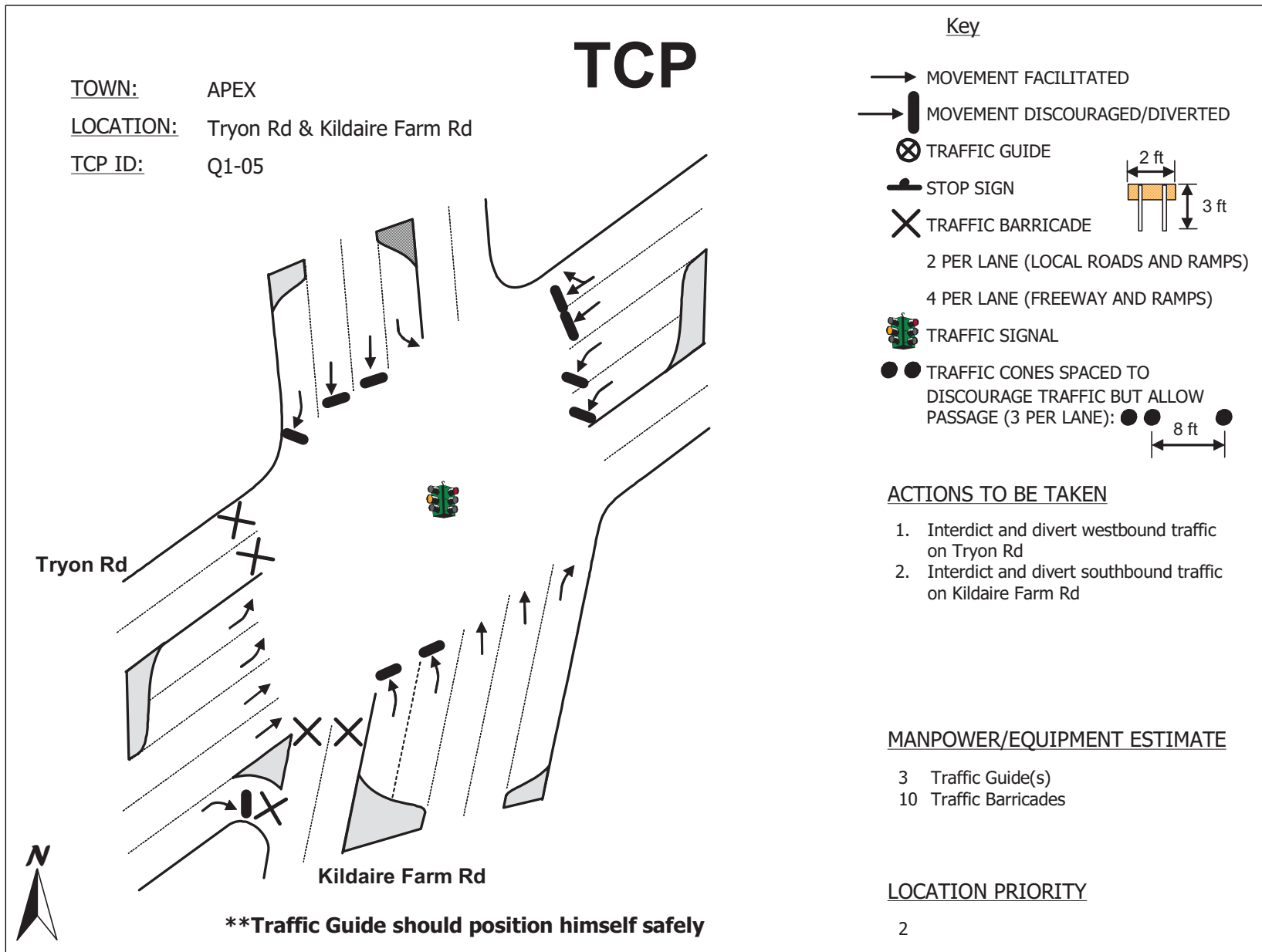
LOCATION PRIORITY

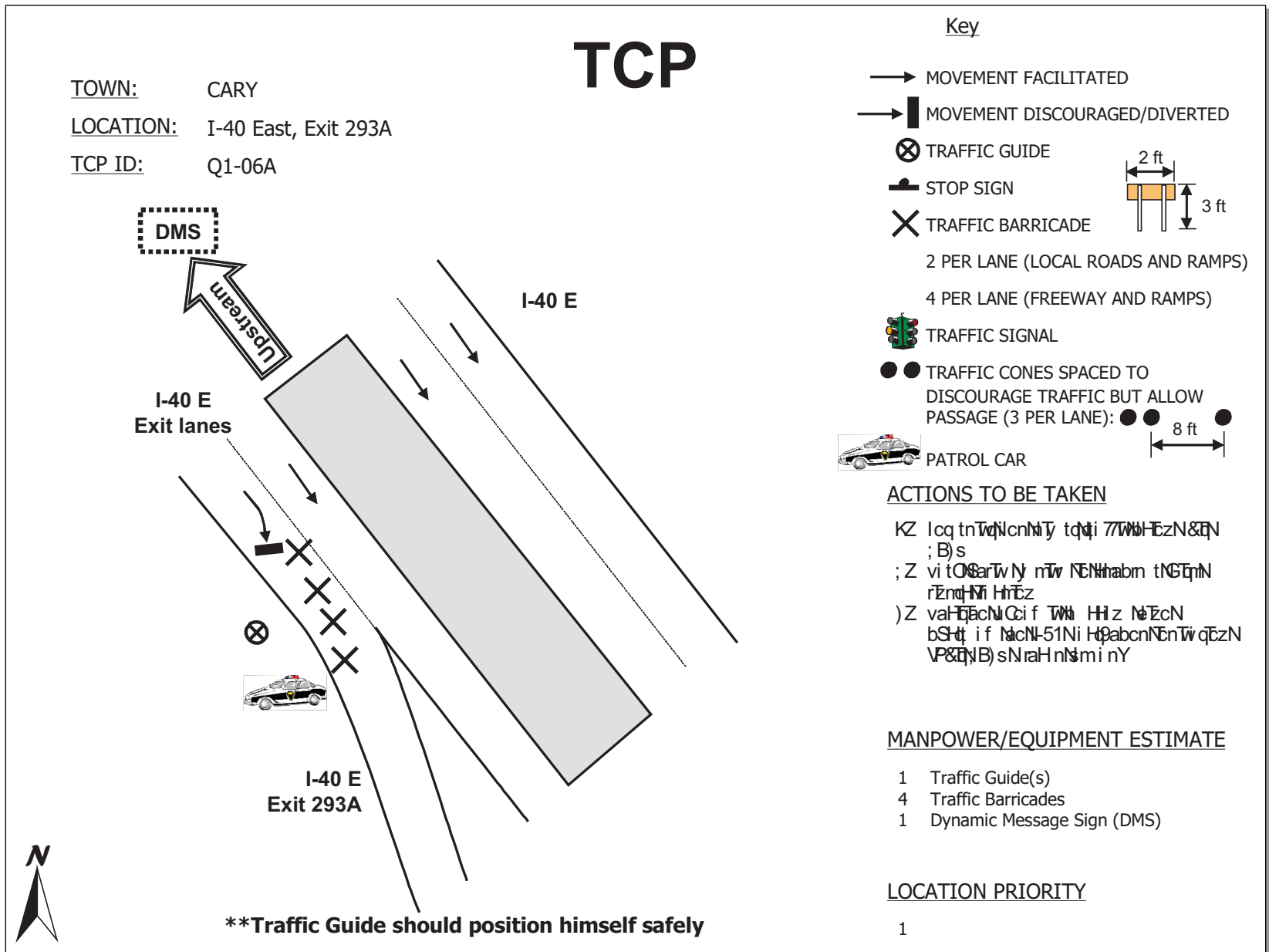
1





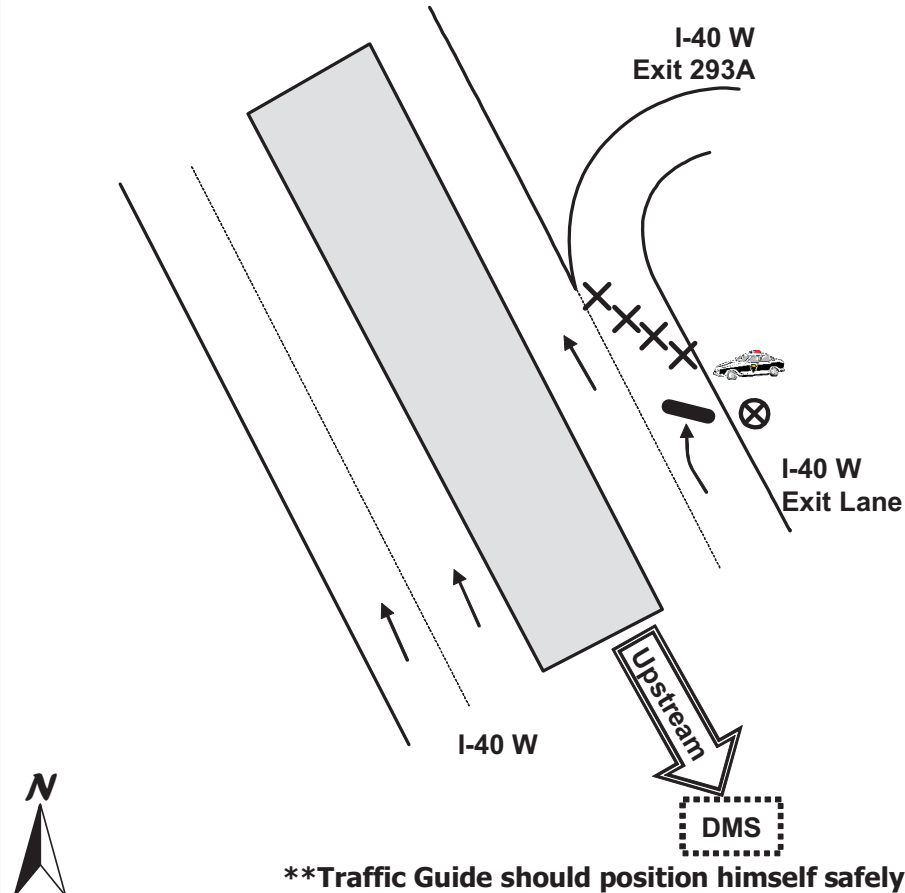






TCP

TOWN: CARY
LOCATION: I-40 West, Exit 293A
TCP ID: Q1-06B



Key

- MOVEMENT FACILITATED
- MOVEMENT DISCOURAGED/DIVERTED
- ⊗ TRAFFIC GUIDE
- STOP SIGN
- ⊗ TRAFFIC BARRICADE
- 2 PER LANE (LOCAL ROADS AND RAMPs)
- 4 PER LANE (FREEWAY AND RAMPs)
- TRAFFIC SIGNAL
- ● TRAFFIC CONES SPACED TO DISCOURAGE TRAFFIC BUT ALLOW PASSAGE (3 PER LANE): ● ● ● 8 ft
- PATROL VEHICLE

ACTIONS TO BE TAKEN

1. Interdict and divert traffic using exit 293A
2. Park patrol vehicle on shoulder with emergency lights flashing
3. Position Dynamic Message Sign upstream on I-40 westbound indicating "Exit 293A Closed Ahead"

MANPOWER/EQUIPMENT ESTIMATE

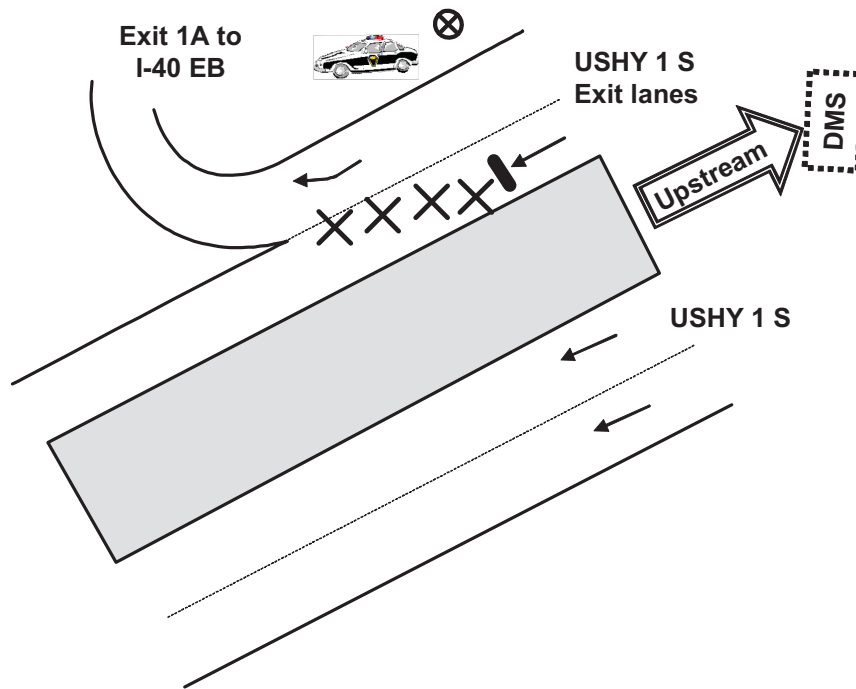
- 1 Traffic Guide(s)
- 4 Traffic Barricades
- 1 Dynamic Message Sign (DMS)

LOCATION PRIORITY

1

TCP

TOWN: CARY
LOCATION: U.S. Highway 1 Southbound, Exit 1 A for I-40 Eastbound
TCP ID: Q1-06C



****Traffic Guide should position himself safely**

Key

- MOVEMENT FACILITATED
- MOVEMENT DISCOURAGED/DIVERTED
- ⊗ TRAFFIC GUIDE
- STOP SIGN
- × TRAFFIC BARRICADE
- 2 PER LANE (LOCAL ROADS AND RAMPS)
- 4 PER LANE (FREEWAY AND RAMPS)
- TRAFFIC SIGNAL
- ● TRAFFIC CONES SPACED TO DISCOURAGE TRAFFIC BUT ALLOW PASSAGE (3 PER LANE): ● ● 8 ft
- PATROL CAR

ACTIONS TO BE TAKEN

1. Interdict and discourage southbound movement on USHY 1
2. Position Dynamic Message Signs upstream indicating "USHY 1 Southbound is diverted at I-40"
3. Park patrol car in shoulder with lights flashing

MANPOWER/EQUIPMENT ESTIMATE

- 1 Traffic Guide(s)
- 4 Traffic Barricades
- 1 Dynamic Message Sign (DMS)

LOCATION PRIORITY

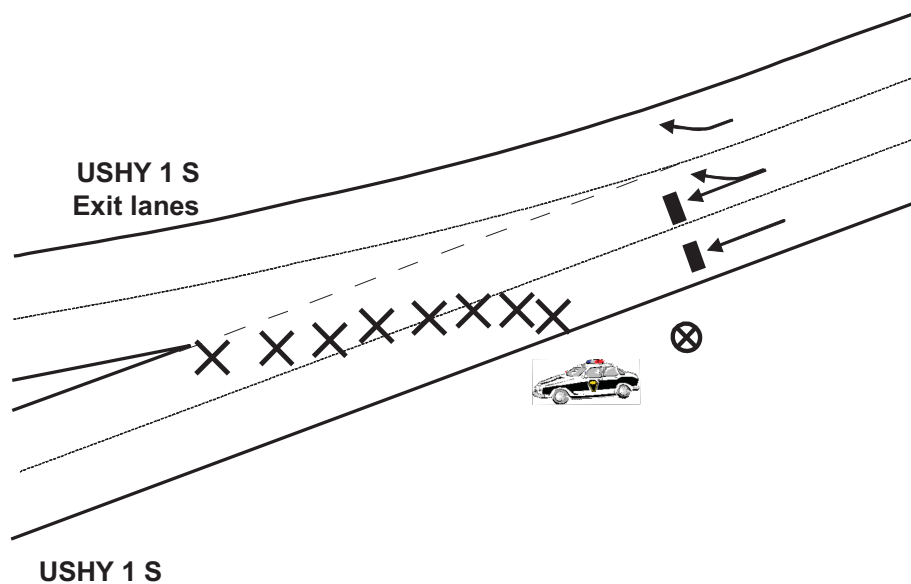
1

TCP

TOWN: CARY
LOCATION: U.S. Highway 1 South, Exit for I-40
TCP ID: Q1-06D

Key

- MOVEMENT FACILITATED
- | MOVEMENT DISCOURAGED/DIVERTED
- ⊗ TRAFFIC GUIDE
- STOP SIGN
- × TRAFFIC BARRICADE
 - 2 PER LANE (LOCAL ROADS AND RAMPs)
 - 4 PER LANE (FREEWAY AND RAMPs)
- TRAFFIC SIGNAL
- ● TRAFFIC CONES SPACED TO DISCOURAGE TRAFFIC BUT ALLOW PASSAGE (3 PER LANE): ● ● ● 8 ft
- PATROL CAR



ACTIONS TO BE TAKEN

- Interdict and divert southbound traffic on USHY 1
- Position Dynamic Message Sign upstream on USHY 1 indicating "Southbound traffic is diverted at I-40"
- Park patrol car on shoulder with lights flashing

MANPOWER/EQUIPMENT ESTIMATE

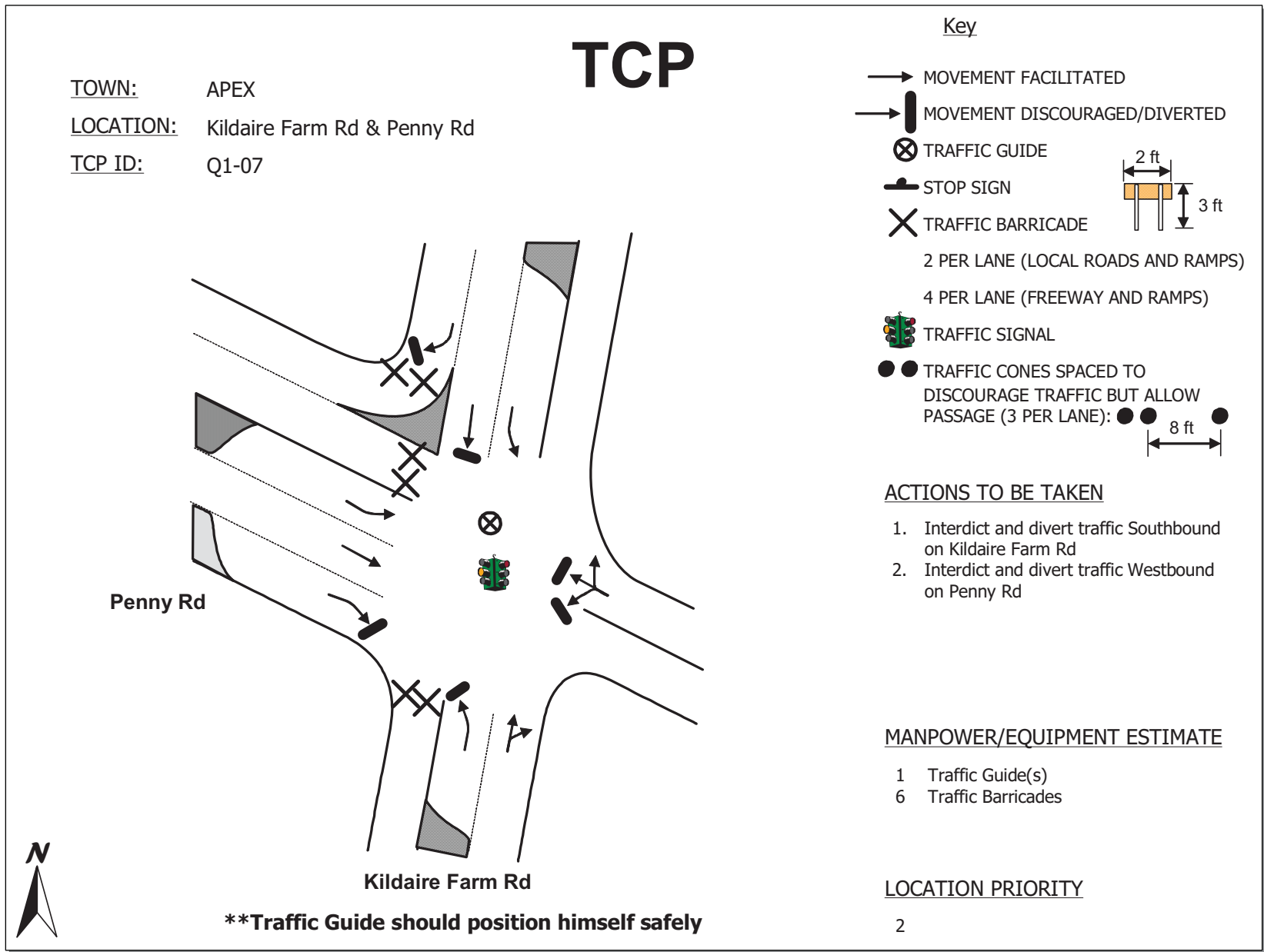
- 1 Traffic Guide(s)
- 8 Traffic Barricades
- 1 Dynamic Message Sign (DMS)

LOCATION PRIORITY

1

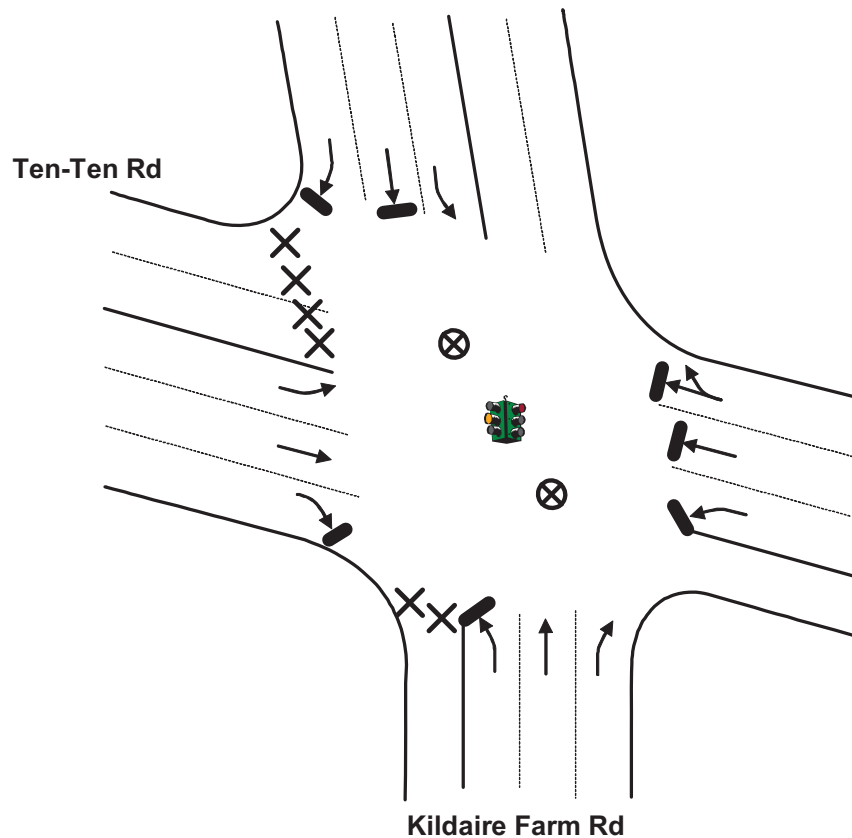


****Traffic Guide should position himself safely**



TCP

TOWN: APEX
LOCATION: Kildaire Farm Rd & Ten-Ten Rd
TCP ID: Q1-08



****Traffic Guide should position himself safely**

Key

- MOVEMENT FACILITATED
- T MOVEMENT DISCOURAGED/DIVERTED
- ⊗ TRAFFIC GUIDE
- T STOP SIGN
- X TRAFFIC BARRICADE
- 2 PER LANE (LOCAL ROADS AND RAMPS)
- 4 PER LANE (FREEWAY AND RAMPS)
- T TRAFFIC SIGNAL
- ● TRAFFIC CONES SPACED TO DISCOURAGE TRAFFIC BUT ALLOW PASSAGE (3 PER LANE): ● ● 8 ft

ACTIONS TO BE TAKEN

1. Interdict and divert westbound movement on Ten-Ten Rd
2. Interdict and divert southbound movement on Kildaire Farm Rd

MANPOWER/EQUIPMENT ESTIMATE

- 2 Traffic Guide(s)
- 6 Traffic Barricades

LOCATION PRIORITY

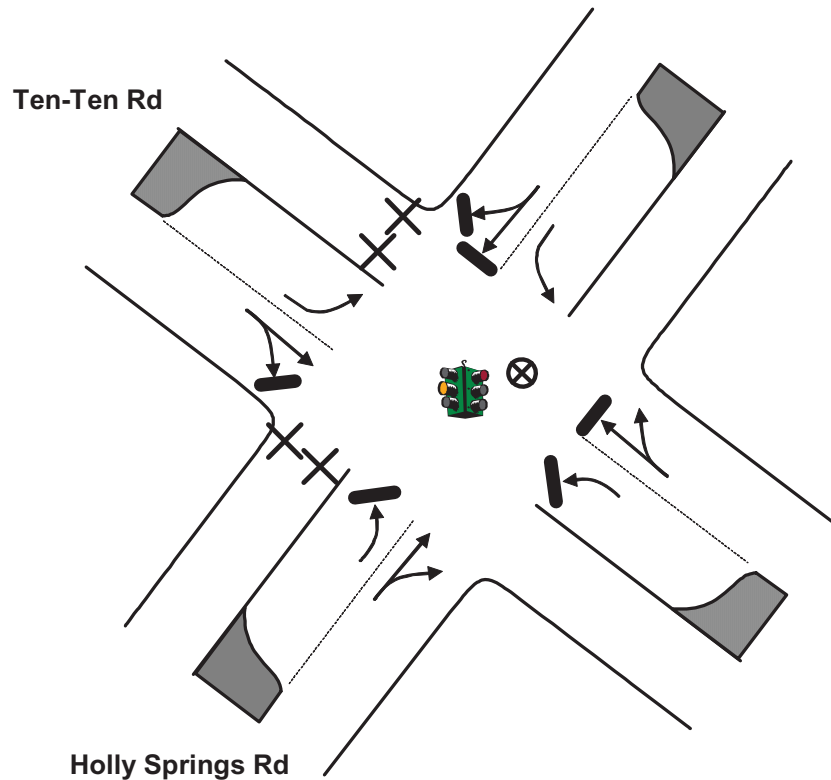
2

TCP

TOWN: APEX

LOCATION: Ten-Ten Rd & Holly Springs Rd

TCP ID: Q1-09



****Traffic Guide should position himself safely**

Key

- MOVEMENT FACILITATED
- MOVEMENT DISCOURAGED/DIVERTED
- ⊗ TRAFFIC GUIDE
- STOP SIGN
- ⊗ TRAFFIC BARRICADE
- 2 PER LANE (LOCAL ROADS AND RAMP)
- 4 PER LANE (FREEWAY AND RAMP)
- TRAFFIC SIGNAL
- ● TRAFFIC CONES SPACED TO DISCOURAGE TRAFFIC BUT ALLOW PASSAGE (3 PER LANE): ● ● 8 ft

ACTIONS TO BE TAKEN

1. Interdict and divert westbound movement on Ten-Ten Rd
2. Interdict and divert southbound movement on Holly Springs Rd

MANPOWER/EQUIPMENT ESTIMATE

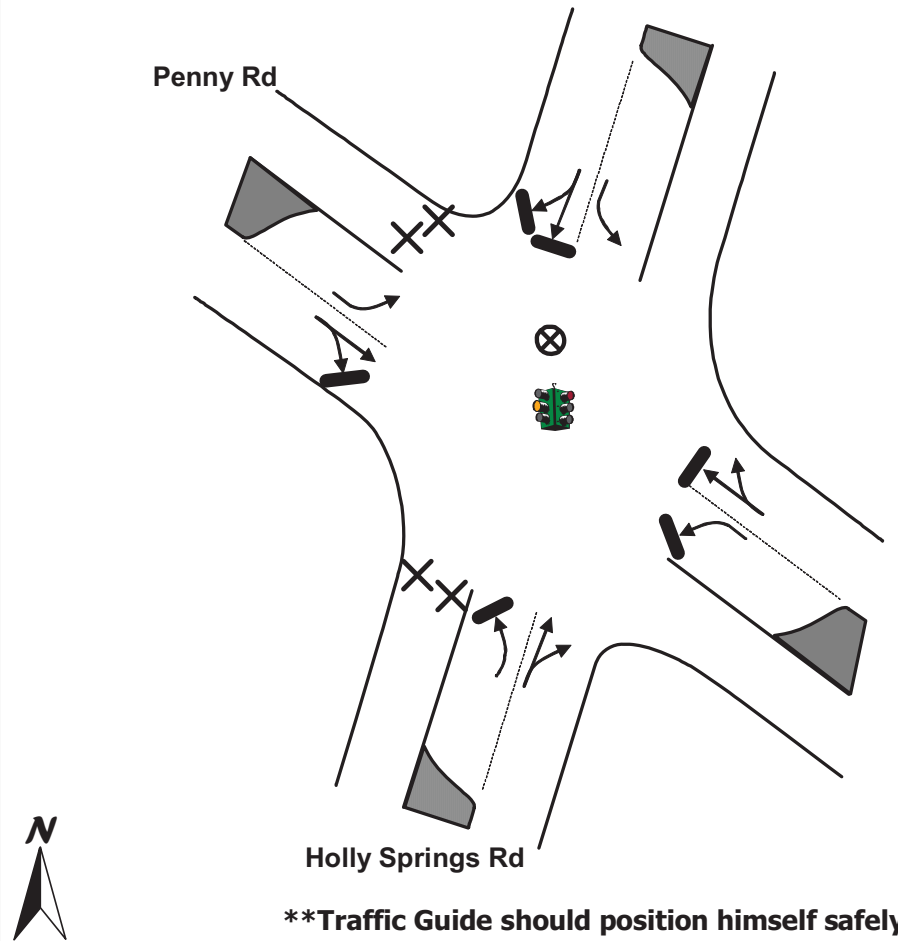
- 1 Traffic Guide(s)
- 4 Traffic Barricades

LOCATION PRIORITY

3

TCP

TOWN: APEX
LOCATION: Holly Springs Rd & Penny Rd
TCP ID: Q1-10



Key

- MOVEMENT FACILITATED
- MOVEMENT DISCOURAGED/DIVERTED
- ⊗ TRAFFIC GUIDE
- STOP SIGN
- ⊗ TRAFFIC BARRICADE
- 2 PER LANE (LOCAL ROADS AND RAMPS)
- 4 PER LANE (FREEWAY AND RAMPS)
- TRAFFIC SIGNAL
- ● TRAFFIC CONES SPACED TO DISCOURAGE TRAFFIC BUT ALLOW PASSAGE (3 PER LANE): ● ● 8 ft

ACTIONS TO BE TAKEN

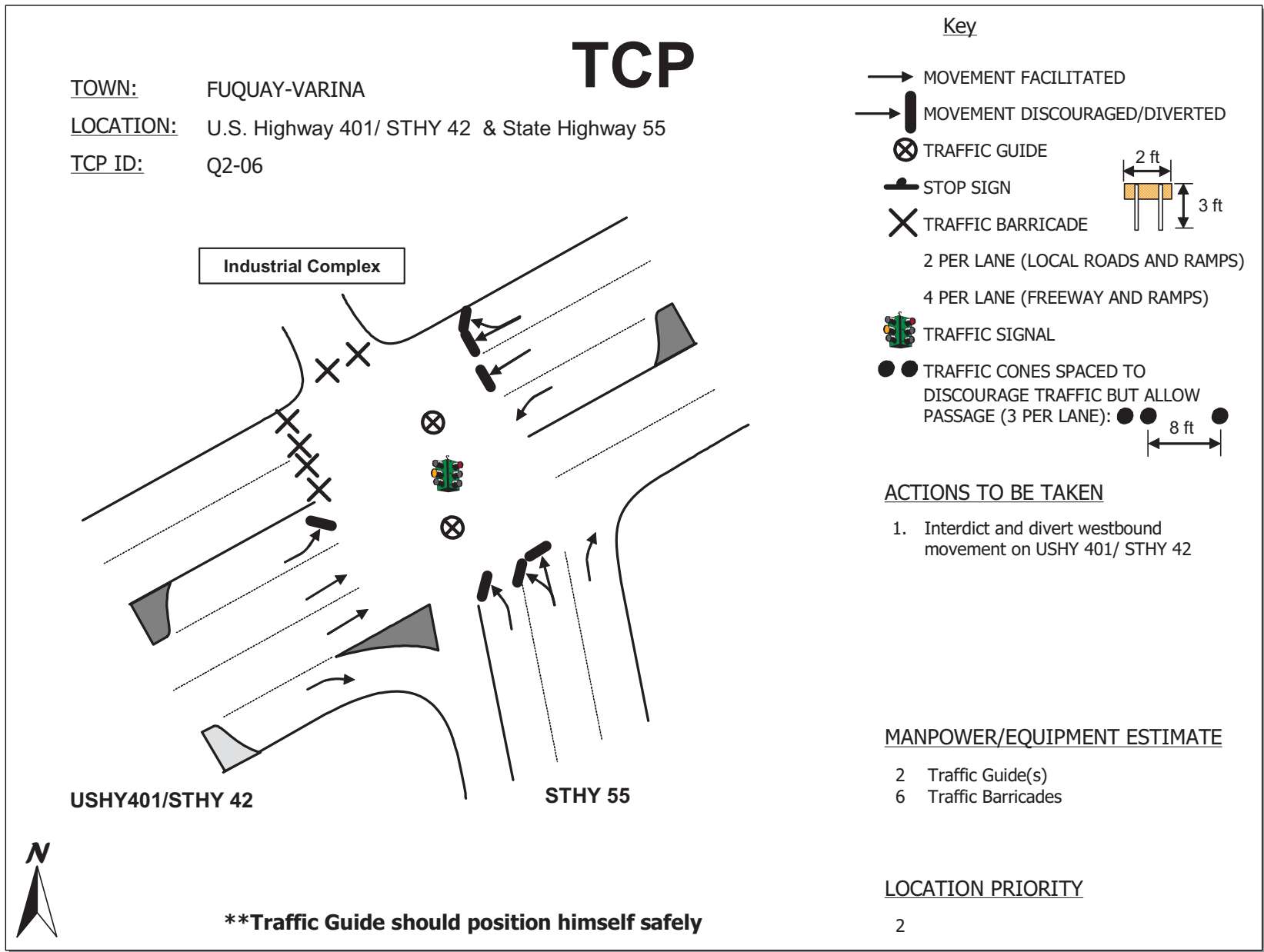
1. Interdict and divert westbound movement on Penny Rd
2. Interdict and divert southbound movement on Holly Springs Rd

MANPOWER/EQUIPMENT ESTIMATE

- 1 Traffic Guide(s)
- 4 Traffic Barricades

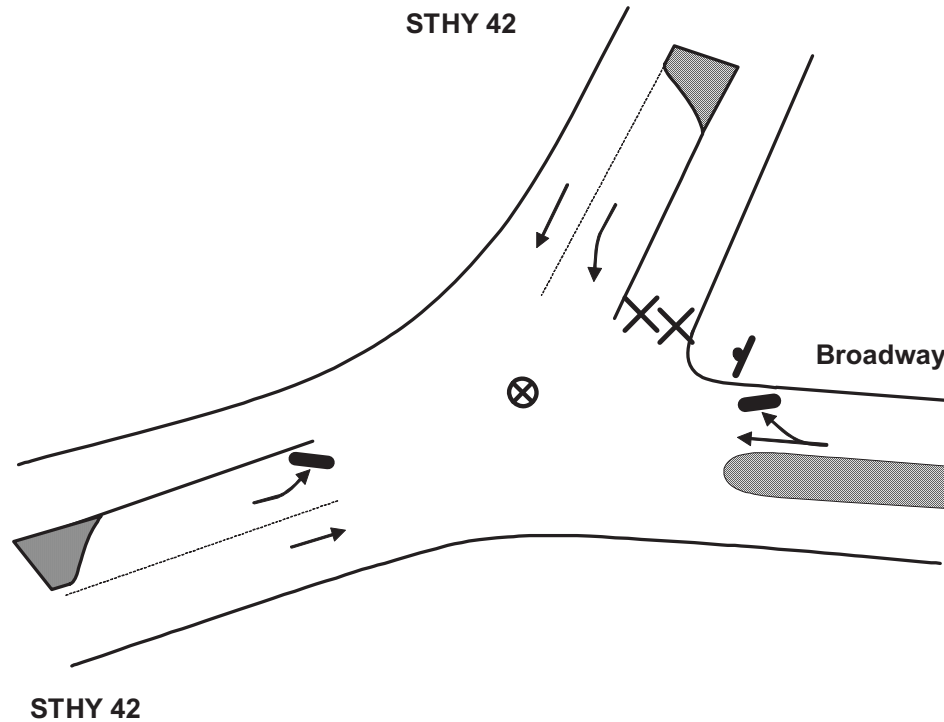
LOCATION PRIORITY

3



TCP

TOWN: Sanford
LOCATION: State Highway 42 & Broadway
TCP ID: Q3-01



****Traffic Guide should position himself safely**

Key

- MOVEMENT FACILITATED
- | MOVEMENT DISCOURAGED/DIVERTED
- ⊗ TRAFFIC GUIDE
- ⊥ STOP SIGN
- ⊗ TRAFFIC BARRICADE
- 2 PER LANE (LOCAL ROADS AND RAMP)
- 4 PER LANE (FREEWAY AND RAMP)
- 🚦 TRAFFIC SIGNAL
- ● TRAFFIC CONES SPACED TO DISCOURAGE TRAFFIC BUT ALLOW PASSAGE (3 PER LANE): ● ● 8 ft

ACTIONS TO BE TAKEN

1. Interdict and divert eastbound traffic on STHY 42

MANPOWER/EQUIPMENT ESTIMATE

- 1 Traffic Guide(s)
- 2 Traffic Barricades

LOCATION PRIORITY

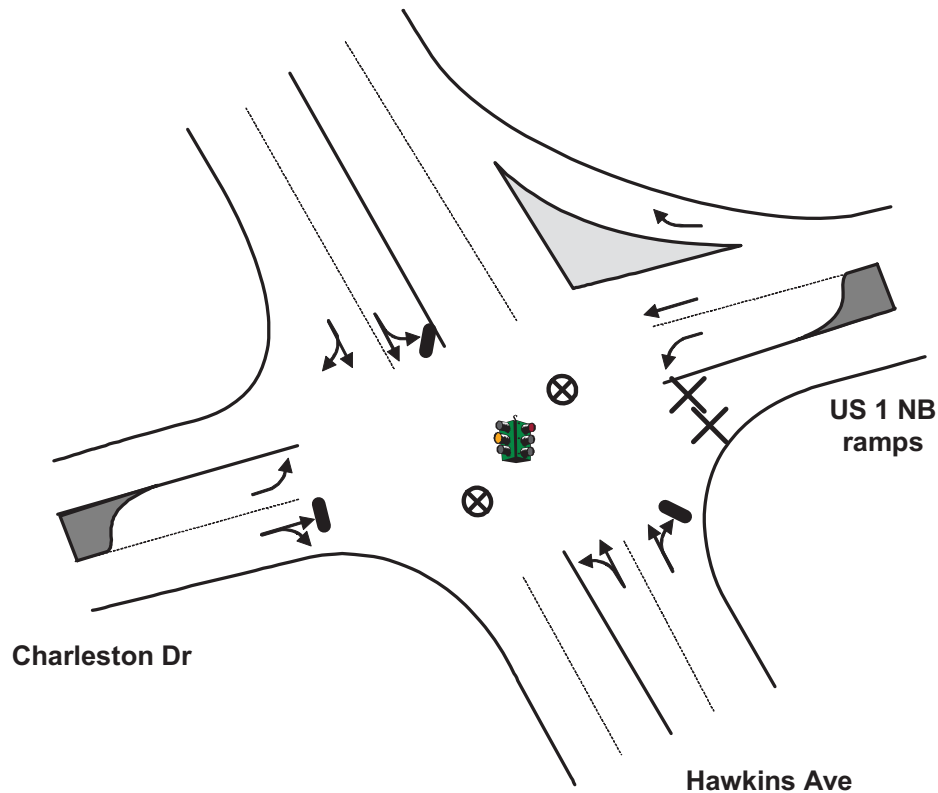
3

TCP

TOWN: Sanford

LOCATION: Hawkins Ave & US Highway 1 (N) Access Ramp

TCP ID: Q3-02



****Traffic Guide should position himself safely**

Key

- MOVEMENT FACILITATED
- MOVEMENT DISCOURAGED/DIVERTED
- ⊗ TRAFFIC GUIDE
- STOP SIGN
- × TRAFFIC BARRICADE
- 2 PER LANE (LOCAL ROADS AND RAMPs)
- 4 PER LANE (FREEWAY AND RAMPs)
- TRAFFIC SIGNAL
- ● TRAFFIC CONES SPACED TO DISCOURAGE TRAFFIC BUT ALLOW PASSAGE (3 PER LANE): ● ● 8 ft

ACTIONS TO BE TAKEN

1. Interdict and divert traffic accessing US Highway 1 northbound.

MANPOWER/EQUIPMENT

- 2 Traffic Guide(s)
- 2 Traffic Barricades

LOCATION PRIORITY

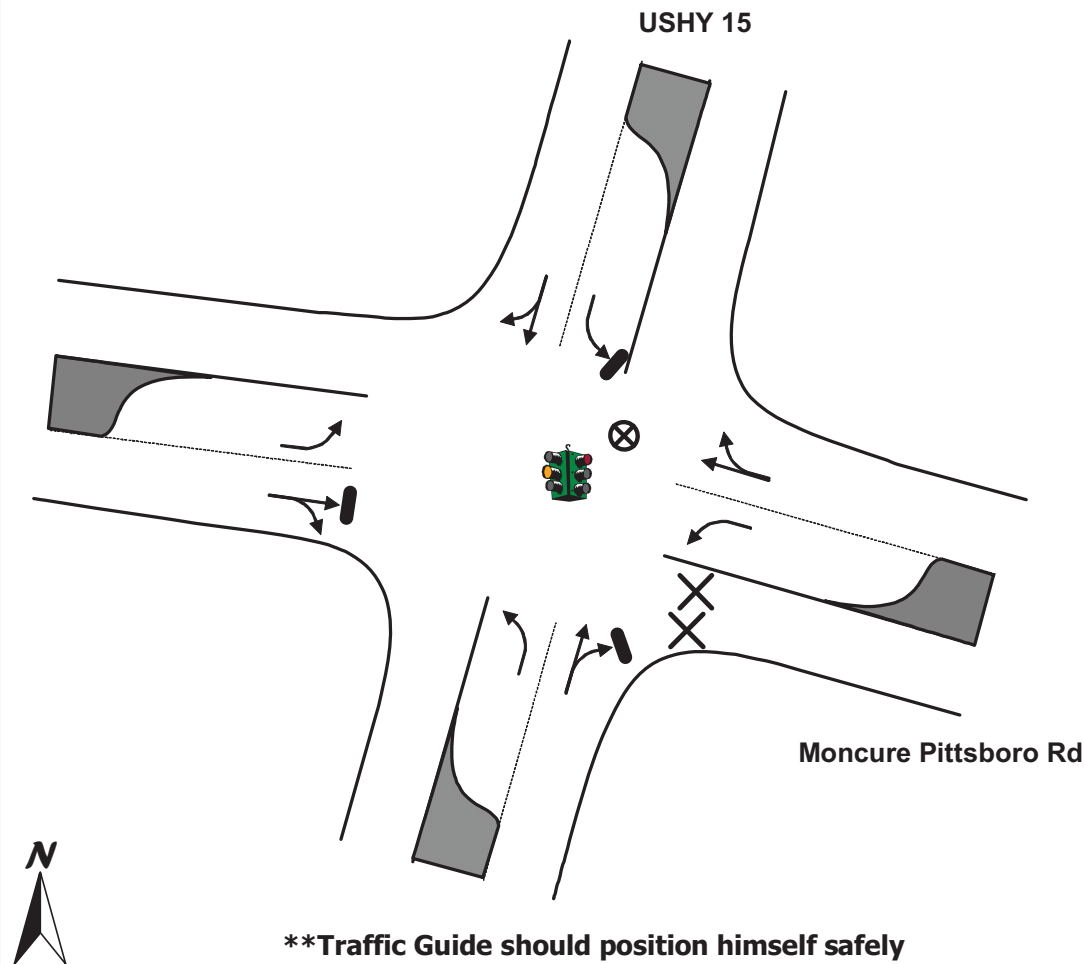
2

TCP

TOWN: Pittsboro

LOCATION: U.S. Highway 15 & Moncure Pittsboro Rd

TCP ID: Q4-01



Key

- MOVEMENT FACILITATED
- MOVEMENT DISCOURAGED/DIVERTED
- ⊗ TRAFFIC GUIDE
- STOP SIGN
- × TRAFFIC BARRICADE
- 2 PER LANE (LOCAL ROADS AND RAMPs)
- 4 PER LANE (FREEWAY AND RAMPs)
- TRAFFIC SIGNAL
- ● TRAFFIC CONES SPACED TO DISCOURAGE TRAFFIC BUT ALLOW PASSAGE (3 PER LANE): ● ● 8 ft

ACTIONS TO BE TAKEN

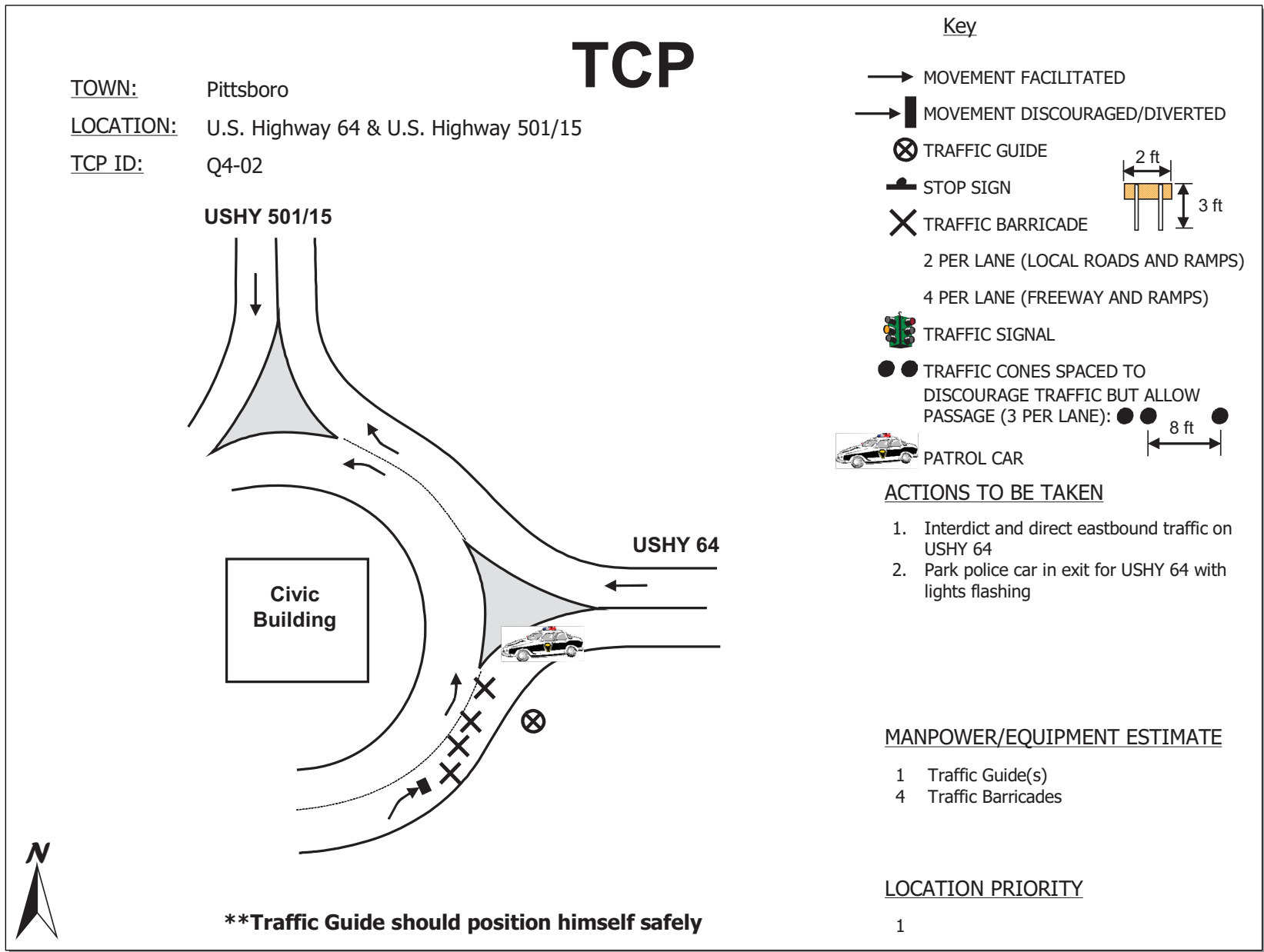
1. Interdict and divert eastbound traffic on Moncure Pittsboro Rd

MANPOWER/EQUIPMENT ESTIMATE

- 1 Traffic Guide(s)
- 2 Traffic Barricades

LOCATION PRIORITY

2



USHY 501/15

Civic Building

USHY 64

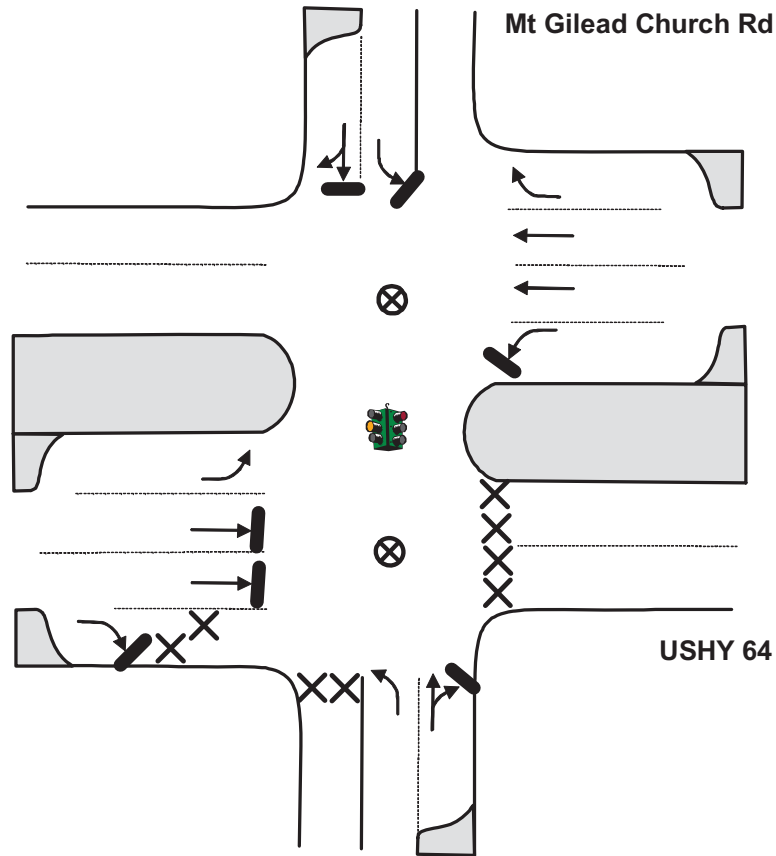
****Traffic Guide should position himself safely**

TCP

TOWN: Pittsboro

LOCATION: U.S. Highway 64 & Mt Gilead Church Rd

TCP ID: Q4-03



****Traffic Guide should position himself safely**

Key

- MOVEMENT FACILITATED
- MOVEMENT DISCOURAGED/DIVERTED
- ⊗ TRAFFIC GUIDE
- STOP SIGN
- ⊗ TRAFFIC BARRICADE
- 2 PER LANE (LOCAL ROADS AND RAMPS)
- 4 PER LANE (FREEWAY AND RAMPS)
- TRAFFIC SIGNAL
- ● TRAFFIC CONES SPACED TO DISCOURAGE TRAFFIC BUT ALLOW PASSAGE (3 PER LANE): ● ● 8 ft

ACTIONS TO BE TAKEN

1. Interdict and divert southbound traffic on Mt Gilead Church Rd
2. Interdict and divert eastbound traffic on USHY 64

MANPOWER/EQUIPMENT ESTIMATE

- 2 Traffic Guide(s)
- 8 Traffic Barricades

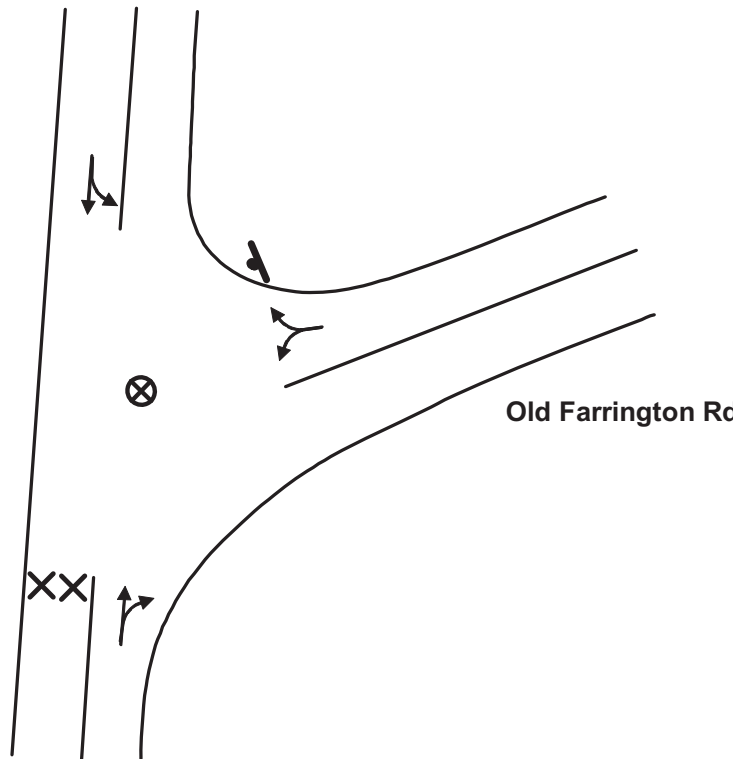
LOCATION PRIORITY

2

TCP

TOWN: Chapel Hill
LOCATION: Farrington Rd & Old Farrington Rd
TCP ID: Q4-04

Farrington Rd



Old Farrington Rd

****Traffic Guide should position himself safely**

Key

- MOVEMENT FACILITATED
- | MOVEMENT DISCOURAGED/DIVERTED
- ⊗ TRAFFIC GUIDE
- STOP SIGN
- ⊗ TRAFFIC BARRICADE
- 2 PER LANE (LOCAL ROADS AND RAMPS)
- 4 PER LANE (FREEWAY AND RAMPS)
- TRAFFIC SIGNAL
- ● TRAFFIC CONES SPACED TO DISCOURAGE TRAFFIC BUT ALLOW PASSAGE (3 PER LANE): ● ● 8 ft

ACTIONS TO BE TAKEN

1. Interdict and direct southbound traffic on Farrington Rd

MANPOWER/EQUIPMENT ESTIMATE

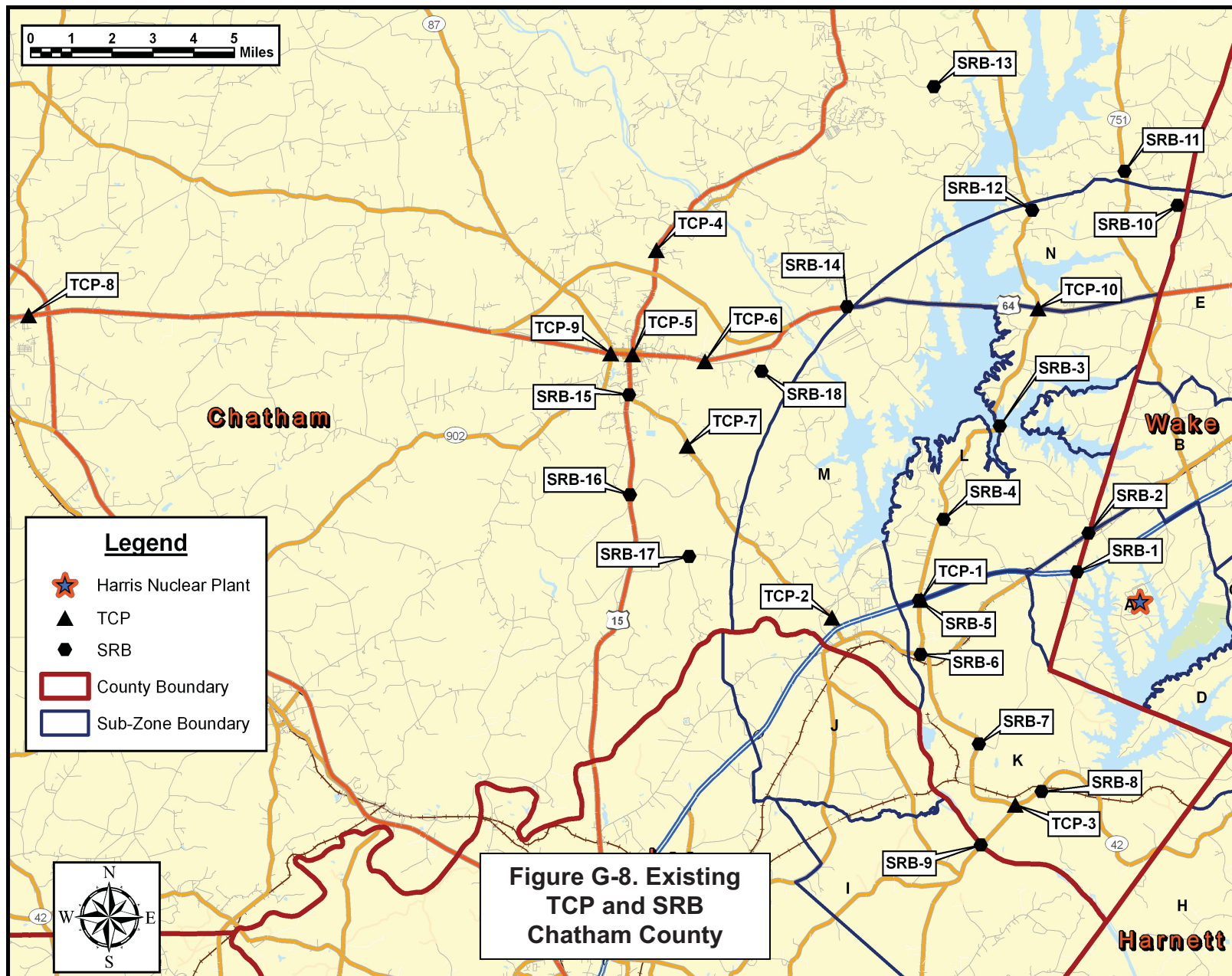
- 1 Traffic Guide(s)
- 2 Traffic Barricades

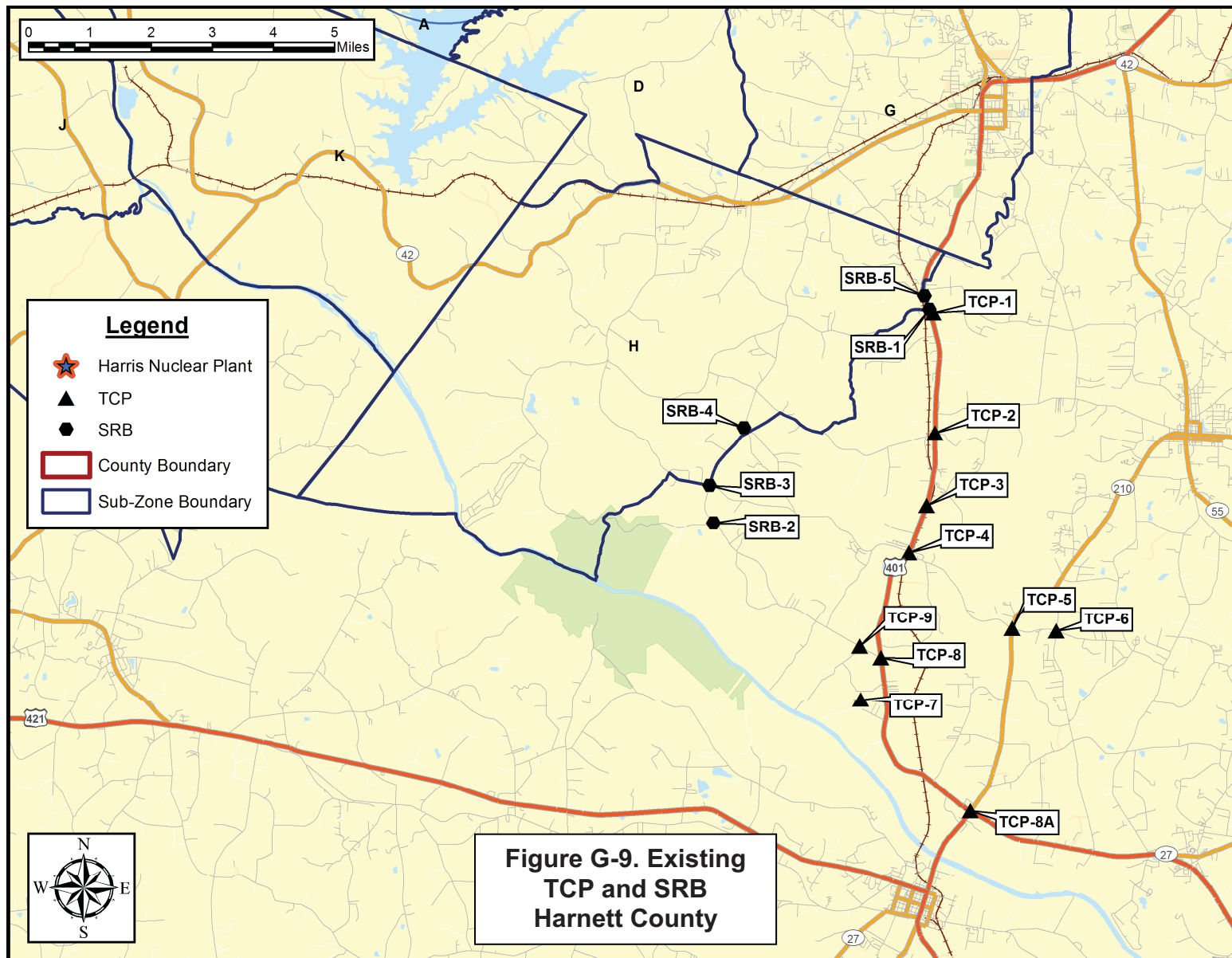
LOCATION PRIORITY

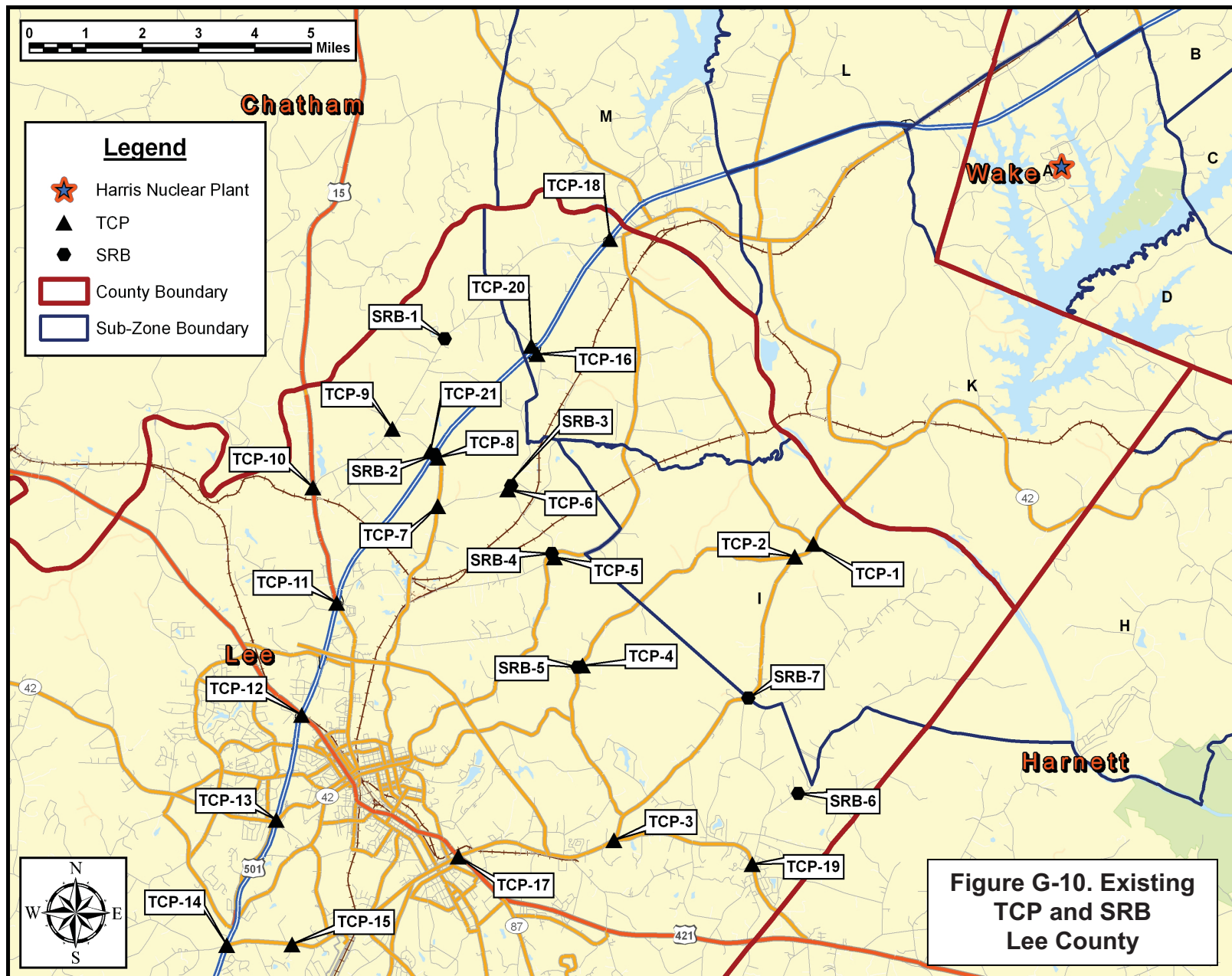
3

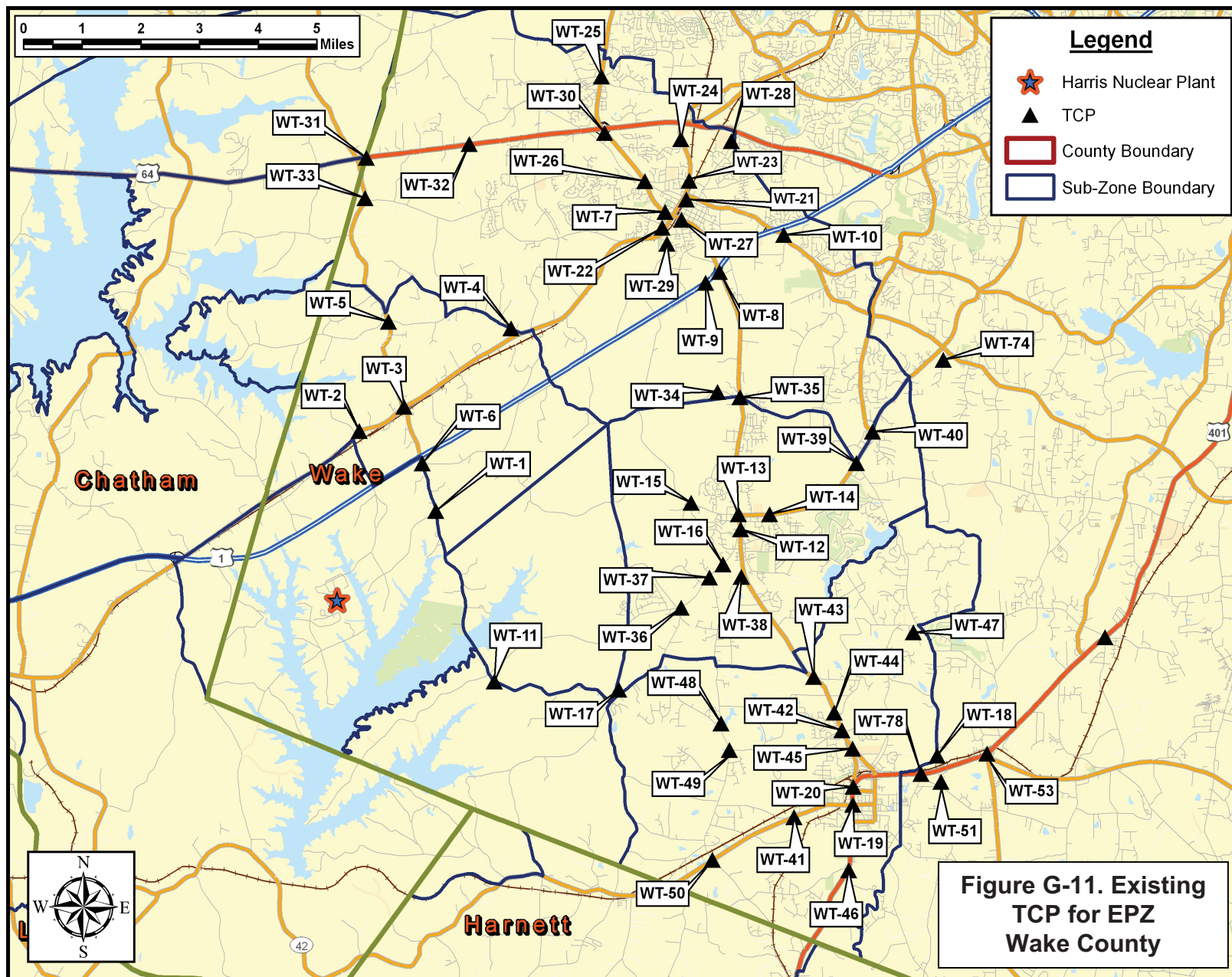
EXISTING COUNTY PLANS

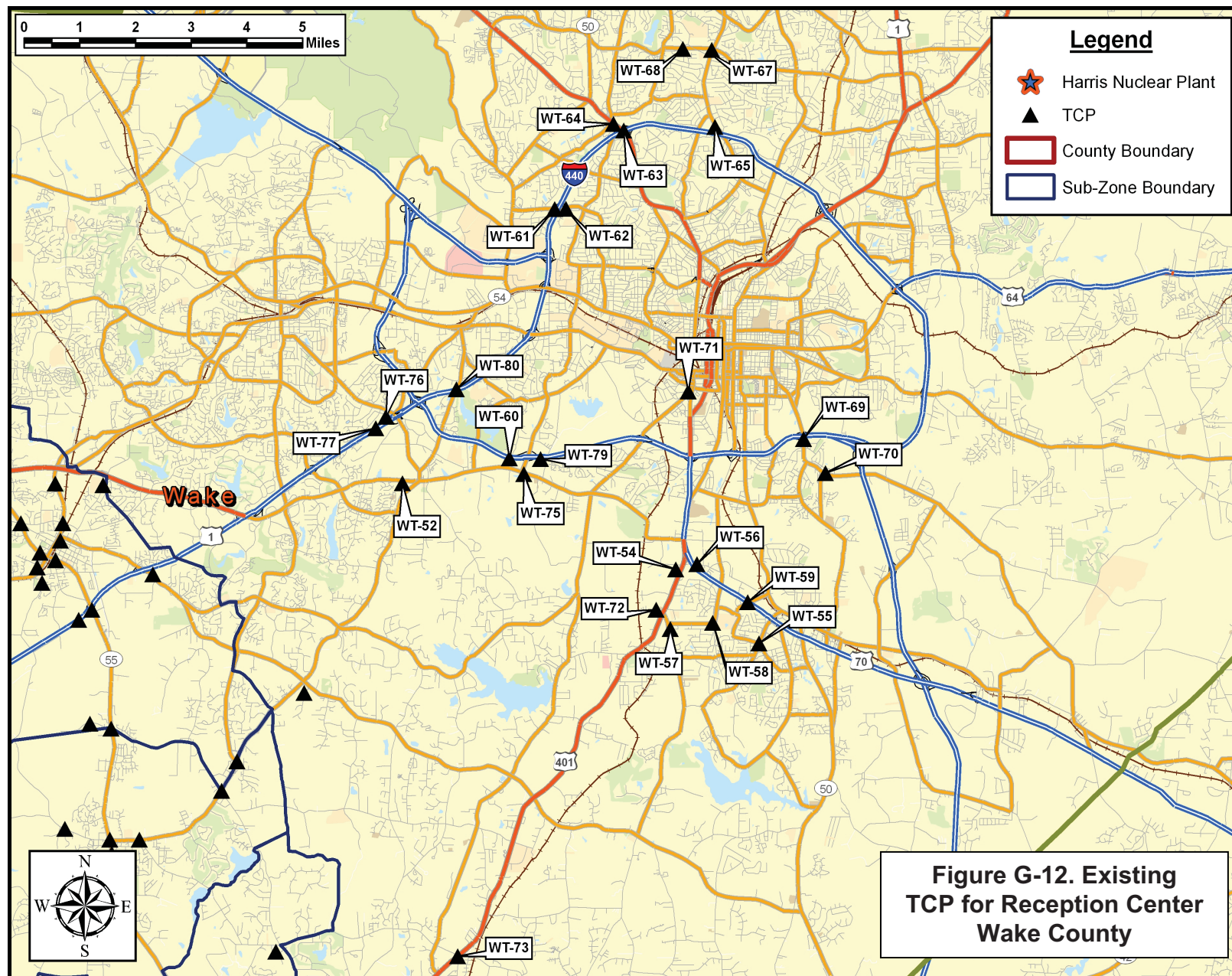
The following figures (Figures G-8 through G-13) map the TCP and SRB identified in the existing county plans. Comparing these figures with Figures G-1 through G-7 shows good agreement between the points identified by KLD and those identified in the county plans. Reference the county plans for more information on the SRB.

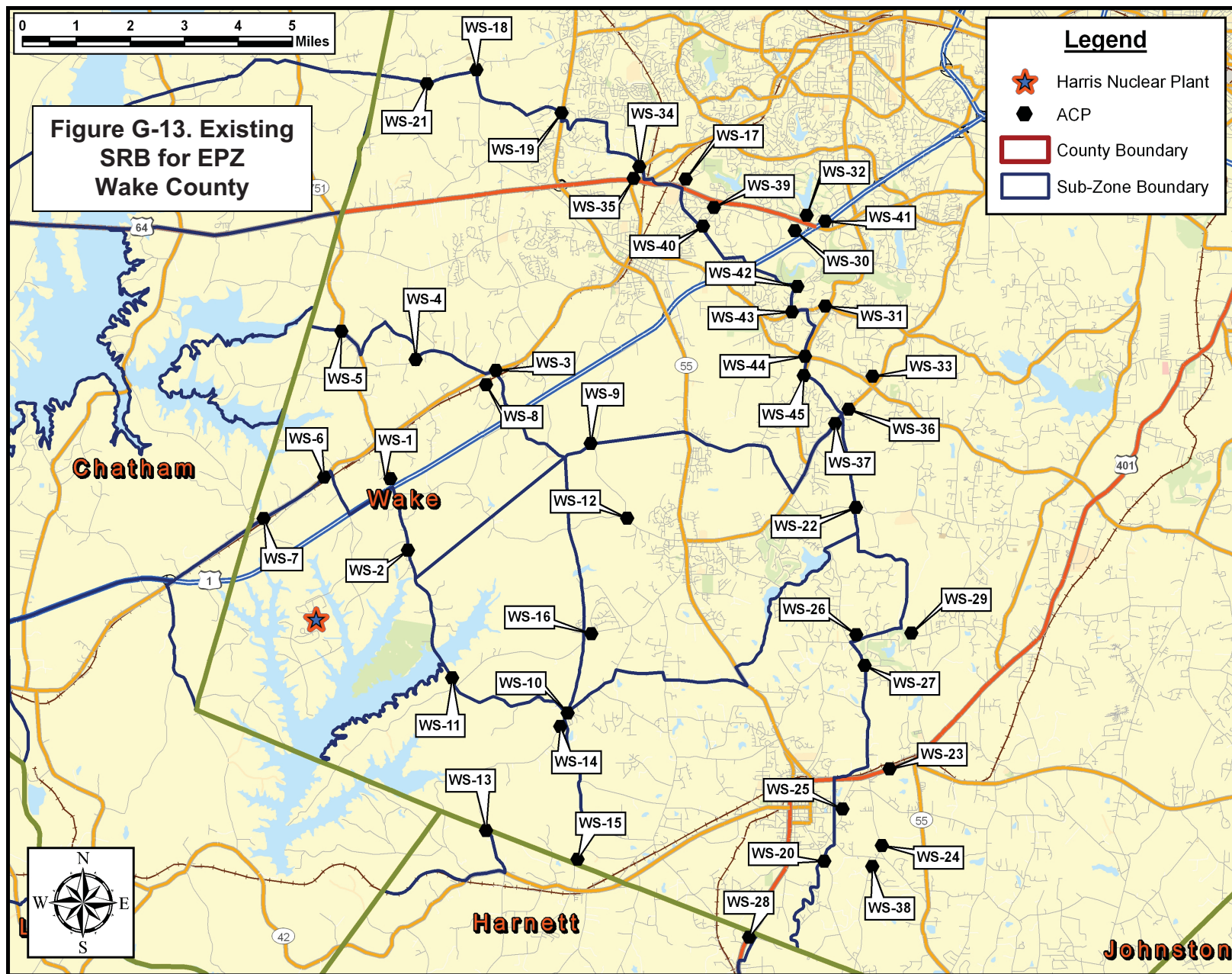












APPENDIX H

Evacuation Regions

APPENDIX H: EVACUATION REGIONS

This appendix presents the assumed voluntary evacuation percentages for each Evacuation Region (Table H-1) and maps of all Evacuation Regions.

Table H-1. Percent of Sub-Zone Population Evacuating for Each Region																									
Sub-Zone	REGION																								
	2-Mile Ring, 5-Mile Ring, Entire EPZ			2-Mile Radius and Downwind to 5-Miles									5-Mile Radius and Downwind to EPZ Boundary												
	1	2	3	4	5	6	7	8	9	10	11	12	13	14	15	16	17	18	19	20	21	22	23	24	25
A	100%	100%	100%	100%	100%	100%	100%	100%	100%	100%	100%	100%	100%	100%	100%	100%	100%	100%	100%	100%	100%	100%	100%	100%	100%
B	35%	100%	100%	100%	100%	100%	100%	50%	50%	50%	50%	50%	100%	100%	100%	100%	100%	100%	100%	100%	100%	100%	100%	100%	100%
C	35%	100%	100%	50%	50%	100%	100%	100%	100%	50%	50%	50%	100%	100%	100%	100%	100%	100%	100%	100%	100%	100%	100%	100%	100%
D	35%	100%	100%	50%	50%	50%	100%	100%	100%	100%	50%	50%	100%	100%	100%	100%	100%	100%	100%	100%	100%	100%	100%	100%	100%
E	35%	35%	100%	35%	35%	35%	35%	35%	35%	35%	35%	35%	100%	100%	100%	50%	50%	50%	50%	50%	50%	50%	50%	50%	100%
F	35%	35%	100%	35%	35%	35%	35%	35%	35%	35%	35%	35%	50%	100%	100%	100%	50%	50%	50%	50%	50%	50%	50%	50%	50%
G	35%	35%	100%	35%	35%	35%	35%	35%	35%	35%	35%	35%	50%	50%	100%	100%	100%	100%	50%	50%	50%	50%	50%	50%	50%
H	35%	35%	100%	35%	35%	35%	35%	35%	35%	35%	35%	35%	50%	50%	50%	100%	100%	100%	100%	100%	50%	50%	50%	50%	50%
I	35%	35%	100%	35%	35%	35%	35%	35%	35%	35%	35%	35%	50%	50%	50%	50%	50%	100%	100%	100%	100%	100%	50%	50%	50%
J	35%	35%	100%	35%	35%	35%	35%	35%	35%	35%	35%	35%	50%	50%	50%	50%	50%	50%	50%	100%	100%	100%	100%	50%	50%
K	35%	100%	100%	50%	50%	50%	50%	50%	100%	100%	100%	100%	100%	100%	100%	100%	100%	100%	100%	100%	100%	100%	100%	100%	100%
L	35%	100%	100%	100%	50%	50%	50%	50%	50%	50%	50%	100%	100%	100%	100%	100%	100%	100%	100%	100%	100%	100%	100%	100%	100%
M	35%	35%	100%	35%	35%	35%	35%	35%	35%	35%	35%	35%	50%	50%	50%	50%	50%	50%	50%	50%	50%	100%	100%	100%	100%
N	35%	35%	100%	35%	35%	35%	35%	35%	35%	35%	35%	35%	100%	50%	50%	50%	50%	50%	50%	50%	50%	50%	50%	100%	100%

