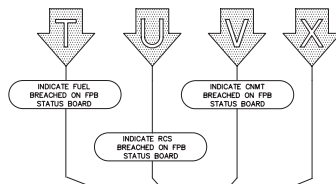
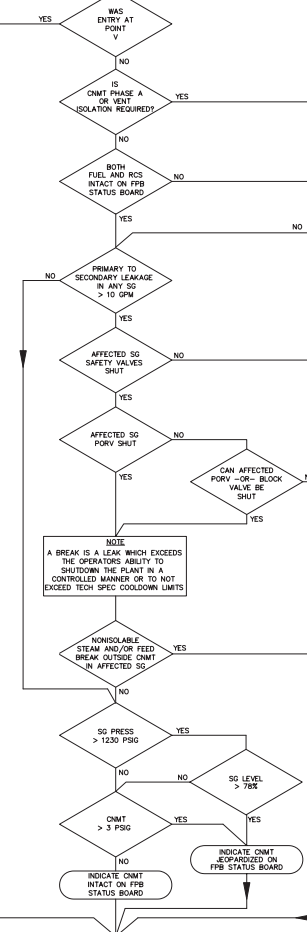
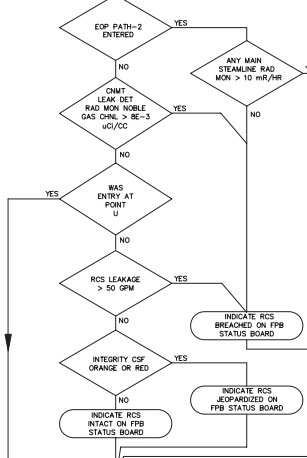
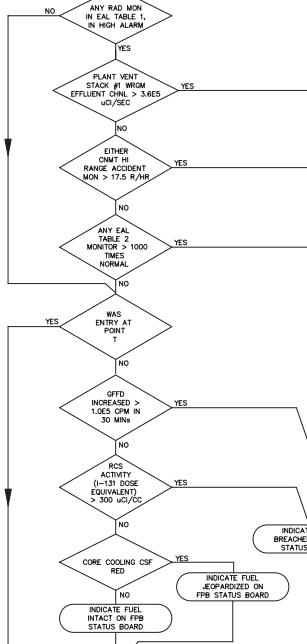


# SIDE 1



INITIATE MONITORING OF CRITICAL SAFETY FUNCTION STATUS TREES



INDICATE FUEL BREACHED ON FPB STATUS BOARD

INDICATE CNMT BREACHED ON FPB STATUS BOARD

FPB STATUS BOARD		
FUEL FPB	RCS FPB	CONTAINMENT FPB
INTACT _____	INTACT _____	INTACT _____
JEOPARDIZED _____	JEOPARDIZED _____	JEOPARDIZED _____
BREACHED _____	BREACHED _____	BREACHED _____

## EAL TABLE 1 RADIATION MONITOR TAG NUMBERS

MONITOR DESCRIPTION	INSTRUMENT TAG NO.	RM-11 CHANNEL ID NO.	ERIS POINT ID NO.
CNMT LEAK DETECTION MONITOR	REM-1LT-3502A-SA	205303	RLT3502B
CNMT HI RANGE ACCIDENT MONITORS	RM-1CR-3589-SA RM-1CR-3589-SB	2AX162 2AX163	ROR3589A ROR3590A
PLANT VENT STACK #1 WROM EFFLUENT CHANNEL	RM-21AV-3509-15A	1EXB17	RAV3509H
TURBINE BUILDING STACK 3A WROM EFFLUENT CHANNEL	RM-1TV-3536-1	2EXB27	RTV3536D
MAIN STEAM LINE MONITORS	RM-1MS-3591-SB RM-1MS-3592-SB RM-1MS-3593-SB	5AX164 5AX165 5AX166	RMS3591A RMS3592A RMS3593A
FUEL BREACH AREA RAD. MONITORS:			
VOLUME CONTROL TANK RM	RM-1RR-3595	1A0G56	RRR3595A
CHARGING PUMP 1A ROOM	RM-1RR-3598A	1A0G60	RRR3598A
CHARGING PUMP 1B ROOM	RM-1RR-3598B	1A0G61	RRR3598B
CHARGING PUMP 1C ROOM	RM-1RR-3598C	1A0G62	RRR3598C
RECYCLE EVAP. VLV. GAL.	RM-1RR-3600	1A0G63	RRR3600A
LETDOWN HV VALVE GAL.	RM-1RR-3601	1A0G64	RRR3601A
MODERATING HV VLV. GAL.	RM-1RR-3602	1A0G65	RRR3602A
STACK #5 MONITOR WROM EFFLUENT CHANNEL	RM-1RW-3546-1	4EXB37	RWR3546H
STACK #6A MONITOR WROM EFFLUENT CHANNEL	RM-1RW-3547-1	4EXB47	RWR3547H
LIQUID EFFLUENT MONITORS TREATED LAUNDRY & HOT SHOWER DISCHARGE	REM-1WL-3540	4LL666	RWL3540A
SECONDARY WASTE SAMPLE TANK DISCHARGE	REM-21WS-3542	4LL686	RWS3542A
WASTE MONITOR TANK DISCHARGE	REM-1WL-3541	4LL676	RWL3541A
TURBINE BLDG. DRAIN	REM-1MD-3528	2LL276	RWD3528A

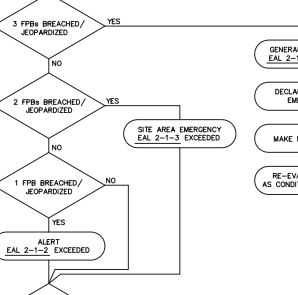
## EAL TABLE 2 FUEL BREACH AREA RAD MONITORS

1. VOLUME CONTROL TANK RM
2. CHARGING PUMP 1A ROOM
3. CHARGING PUMP 1B ROOM
4. CHARGING PUMP 1C ROOM
5. RECYCLE EVAP. VLV. GAL.
6. LETDOWN HV VALVE GAL.
7. MODERATING HV VLV. GAL.

## EAL TABLE 3 FUNCTIONS NEEDED TO ACHIEVE SHUTDOWN

	MODE 4-5	MODE 3
CAPABILITY FOR FW FLOW ≥ 210 KPPH	X	X
SECONDARY HEAT SINK CAPABILITY	X	X
RWR CAPABILITY	X	X
COW CAPABILITY	X	X
ESW CAPABILITY	X	X
CHARGING CAPABILITY	X	X
STEAM GENERATOR SAFETY VALVES	X	X
ISOLATION CAPABILITY	X	X
RCS PRESS. CONTROL CAPABILITY	X	X
ACCU. ISOL. OR VENTING CAPABILITY	X	X

X = REQUIRED



GENERAL EMERGENCY EAL 2-1-4 EXCEEDED

DECLARE GENERAL EMERGENCY

MAKE NOTIFICATIONS

RE-EVALUATE EALS AS CONDITIONS WARRANT

NOTE: EAL ALERT CONDITION EXISTS ONLY FOR THE PERIOD WHILE THE RODS ARE OUT

GENERAL EMERGENCY EAL 8-1-4 EXCEEDED

DECLARE GENERAL EMERGENCY

MAKE NOTIFICATIONS

RE-EVALUATE EALS AS CONDITIONS WARRANT

NOTE: EAL ALERT CONDITION EXISTS ONLY FOR THE PERIOD WHILE THE RODS ARE OUT

GENERAL EMERGENCY EAL 10-1-3 EXCEEDED

DECLARE GENERAL EMERGENCY

MAKE NOTIFICATIONS

RE-EVALUATE EALS AS CONDITIONS WARRANT

## EAL STATUS BOARD

EAL REF. NO(S): \_\_\_\_\_

GENERAL EMERGENCY \_\_\_\_\_

SITE AREA EMERGENCY \_\_\_\_\_

ALERT \_\_\_\_\_

UNUSUAL EVENT \_\_\_\_\_

CONTINUING ACTION: \_\_\_\_\_ TIME \_\_\_\_\_

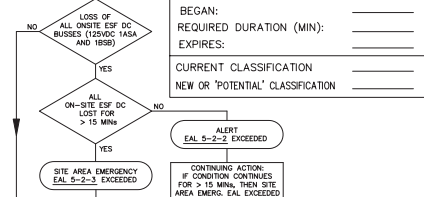
BEGAN: \_\_\_\_\_

REQUIRED DURATION (MIN): \_\_\_\_\_

EXPIRES: \_\_\_\_\_

CURRENT CLASSIFICATION \_\_\_\_\_

NEW OR "POTENTIAL" CLASSIFICATION \_\_\_\_\_



NOTE: MODES 1-4, TOTAL # ALBs = 30  
MODES 5-6, TOTAL # ALBs = 20  
(ALB 1, 2, 4-13, 15, 22, 23, EITHER 24 OR 25 (BASED ON EDG OPERABILITY), 26-28, & 30)



CONTINUING ACTION: IF CONDITION CONTINUES FOR > 15 MIN, THEN SITE AREA EMERG. EAL EXCEEDED

CONTINUING ACTION: IF CONDITION CONTINUES FOR > 15 MIN, THEN SITE AREA EMERG. EAL EXCEEDED

CONTINUING ACTION: IF CONDITION CONTINUES FOR > 15 MIN, THEN SITE AREA EMERG. EAL EXCEEDED

CONTINUING ACTION: IF CONDITION CONTINUES FOR > 15 MIN, THEN SITE AREA EMERG. EAL EXCEEDED

CONTINUING ACTION: IF CONDITION CONTINUES FOR > 15 MIN, THEN SITE AREA EMERG. EAL EXCEEDED

CONTINUING ACTION: IF CONDITION CONTINUES FOR > 15 MIN, THEN SITE AREA EMERG. EAL EXCEEDED

CONTINUING ACTION: IF CONDITION CONTINUES FOR > 15 MIN, THEN SITE AREA EMERG. EAL EXCEEDED

CONTINUING ACTION: IF CONDITION CONTINUES FOR > 15 MIN, THEN SITE AREA EMERG. EAL EXCEEDED

CONTINUING ACTION: IF CONDITION CONTINUES FOR > 15 MIN, THEN SITE AREA EMERG. EAL EXCEEDED

CONTINUING ACTION: IF CONDITION CONTINUES FOR > 15 MIN, THEN SITE AREA EMERG. EAL EXCEEDED

CONTINUING ACTION: IF CONDITION CONTINUES FOR > 15 MIN, THEN SITE AREA EMERG. EAL EXCEEDED

CONTINUING ACTION: IF CONDITION CONTINUES FOR > 15 MIN, THEN SITE AREA EMERG. EAL EXCEEDED

CONTINUING ACTION: IF CONDITION CONTINUES FOR > 15 MIN, THEN SITE AREA EMERG. EAL EXCEEDED

CONTINUING ACTION: IF CONDITION CONTINUES FOR > 15 MIN, THEN SITE AREA EMERG. EAL EXCEEDED

CONTINUING ACTION: IF CONDITION CONTINUES FOR > 15 MIN, THEN SITE AREA EMERG. EAL EXCEEDED

CONTINUING ACTION: IF CONDITION CONTINUES FOR > 15 MIN, THEN SITE AREA EMERG. EAL EXCEEDED

CONTINUING ACTION: IF CONDITION CONTINUES FOR > 15 MIN, THEN SITE AREA EMERG. EAL EXCEEDED

CONTINUING ACTION: IF CONDITION CONTINUES FOR > 15 MIN, THEN SITE AREA EMERG. EAL EXCEEDED

CONTINUING ACTION: IF CONDITION CONTINUES FOR > 15 MIN, THEN SITE AREA EMERG. EAL EXCEEDED

CONTINUING ACTION: IF CONDITION CONTINUES FOR > 15 MIN, THEN SITE AREA EMERG. EAL EXCEEDED

CONTINUING ACTION: IF CONDITION CONTINUES FOR > 15 MIN, THEN SITE AREA EMERG. EAL EXCEEDED

CONTINUING ACTION: IF CONDITION CONTINUES FOR > 15 MIN, THEN SITE AREA EMERG. EAL EXCEEDED

CONTINUING ACTION: IF CONDITION CONTINUES FOR > 15 MIN, THEN SITE AREA EMERG. EAL EXCEEDED

CONTINUING ACTION: IF CONDITION CONTINUES FOR > 15 MIN, THEN SITE AREA EMERG. EAL EXCEEDED

CONTINUING ACTION: IF CONDITION CONTINUES FOR > 15 MIN, THEN SITE AREA EMERG. EAL EXCEEDED

Progress Energy Carolinas  
Shearon Harris Nuclear Power Plant  
Units 1, 2, and 3  
Part 5, Emergency Plan  
New Hill, North Carolina

Emergency Action Level Flowpath  
(Side 1)

FIGURE ANNEX 1-1

Rev 0