

Figure 2.5.2-13. A Comparison of Events ($m_b \geq 3$) from the VCSNS Site Updated Earthquake Catalog from 1985 to 2006 (Blue Circles), the USGS Earthquake Catalog from 1985 to 2006 (Red Circles), and the USGS Earthquake Catalog from 2006 to 2009 (Yellow Circles)
 (The star corresponds to the location of the STP VCSNS site and the dashed black oval corresponds to the 320-km (200-mi) site radius)

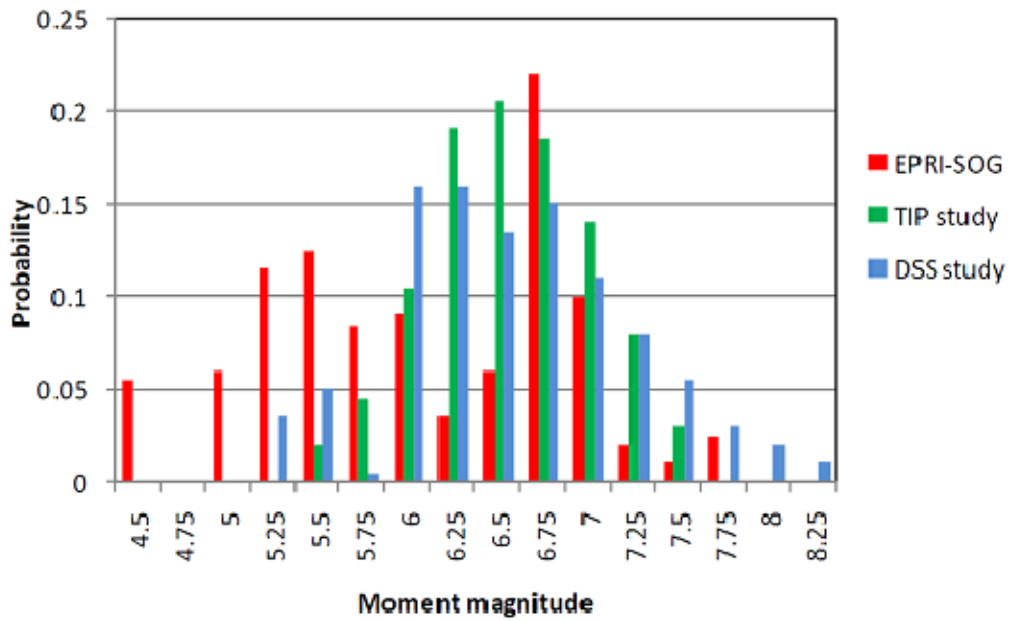


Figure 2.5.2-14. Comparison of ETSZ M_{max} Distributions from the EPRI-SOG Study, the TIP Study, and the TVA Dam Safety Study (DSS)
 (Ref: NEI Sensitivity Study (ML#081720144))

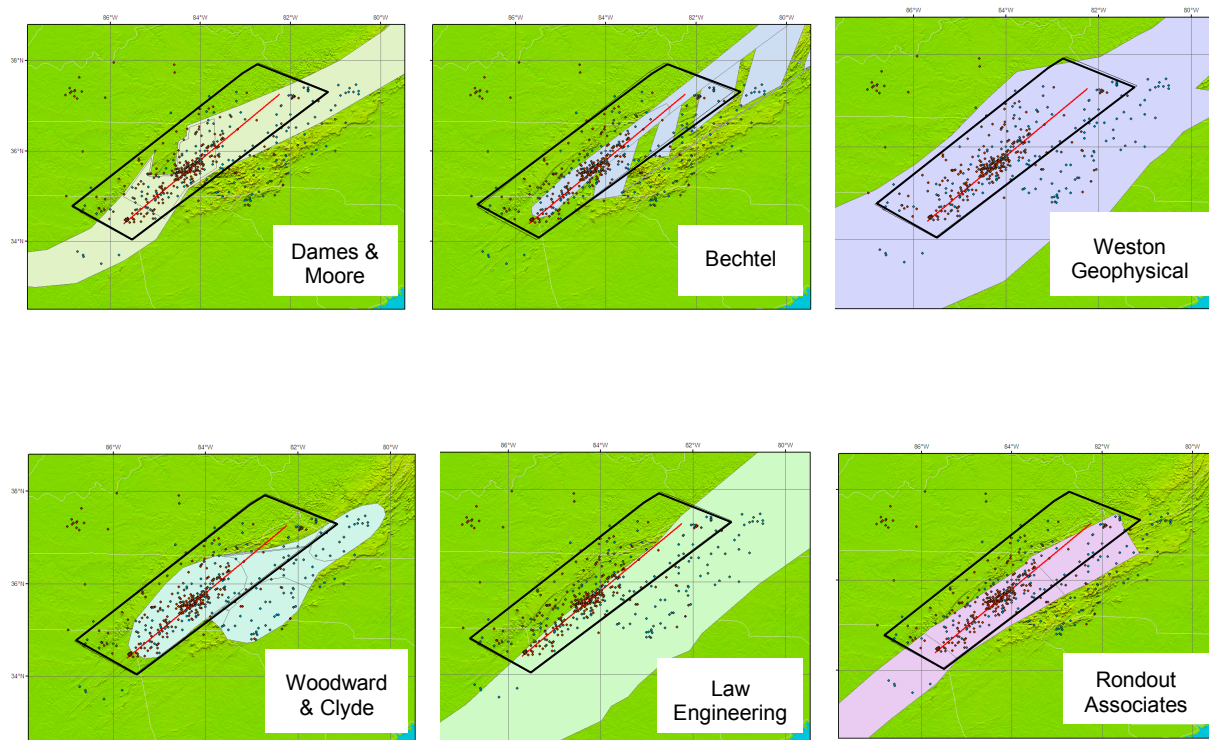


Figure 2.5.2-15. EPRI SOG Source Geometries for the ETSZ
 (The black box is the staff's representation of the ETSZ. The red line is the center of the seismicity in the region.)

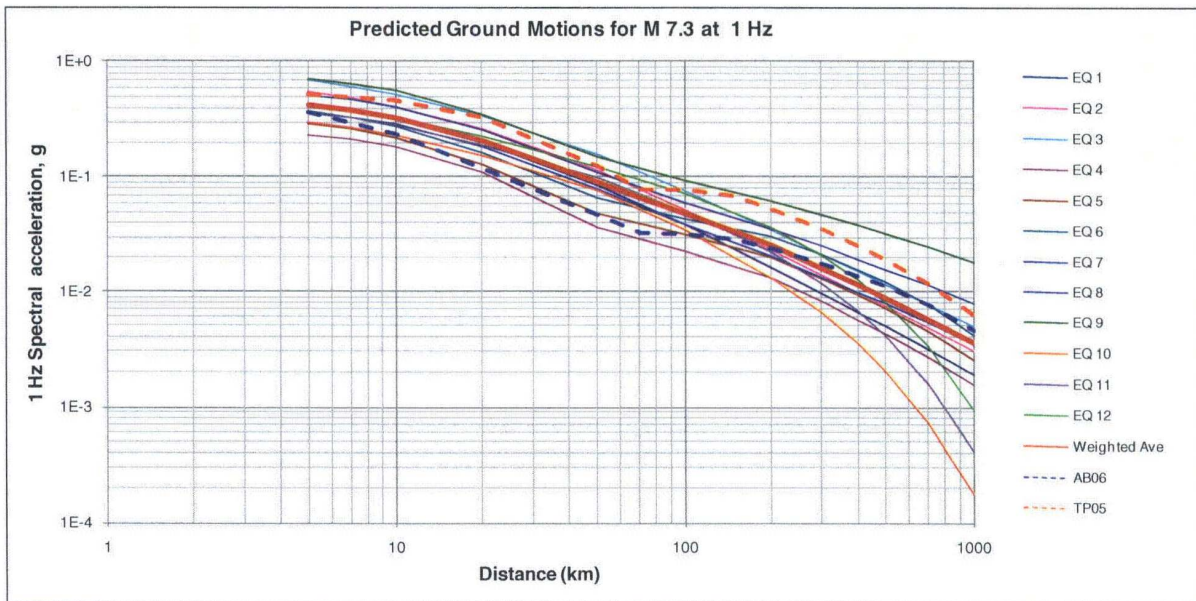
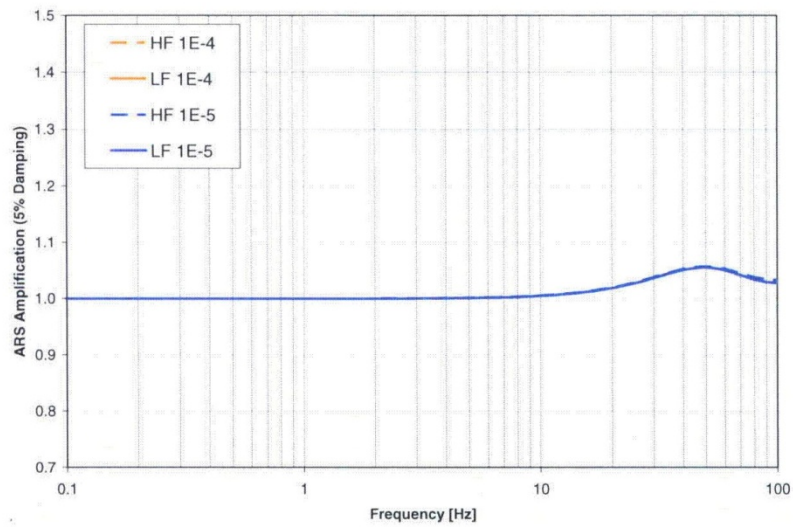
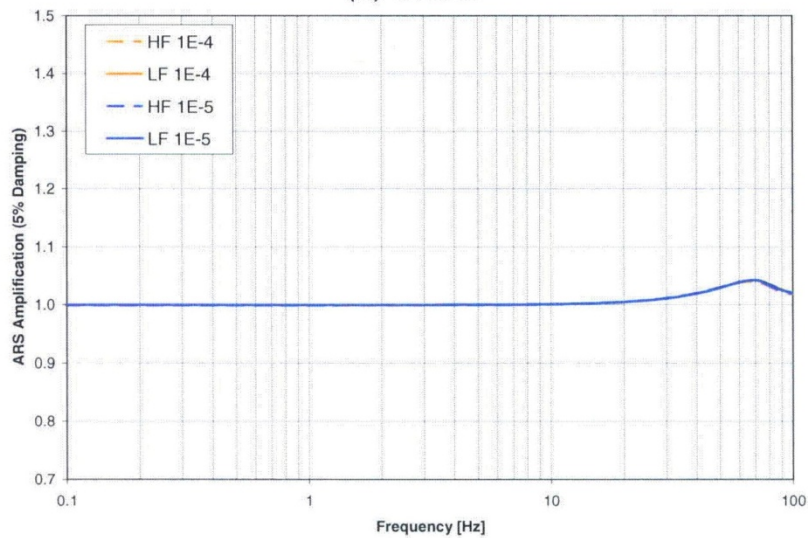


Figure 2.5.2-16. 1 Hz Spectral Accelerations Predicted for M 7.3 for the EPRI (2004) Models and for the Atkinson and Boore (2006) (Referred to as AB06) and Tavakoli and Pezeshk (2005) (Referred to as TP05) References, Using the 12 “Non-general Area Source” Equations from EPRI (2004)
(Ref. Figure RAI 2.5.2-27.6)



(a) Unit 2



(b) Unit 3

Figure 2.5.2-17. Results of the Applicant's Site Response Sensitivity Study Showing the Median and Mean Spectral Amplification Factors for 10-4 and 10-5 HF and LF Input Motions

(Ref. Figure RAI 02.05.02-18.11)