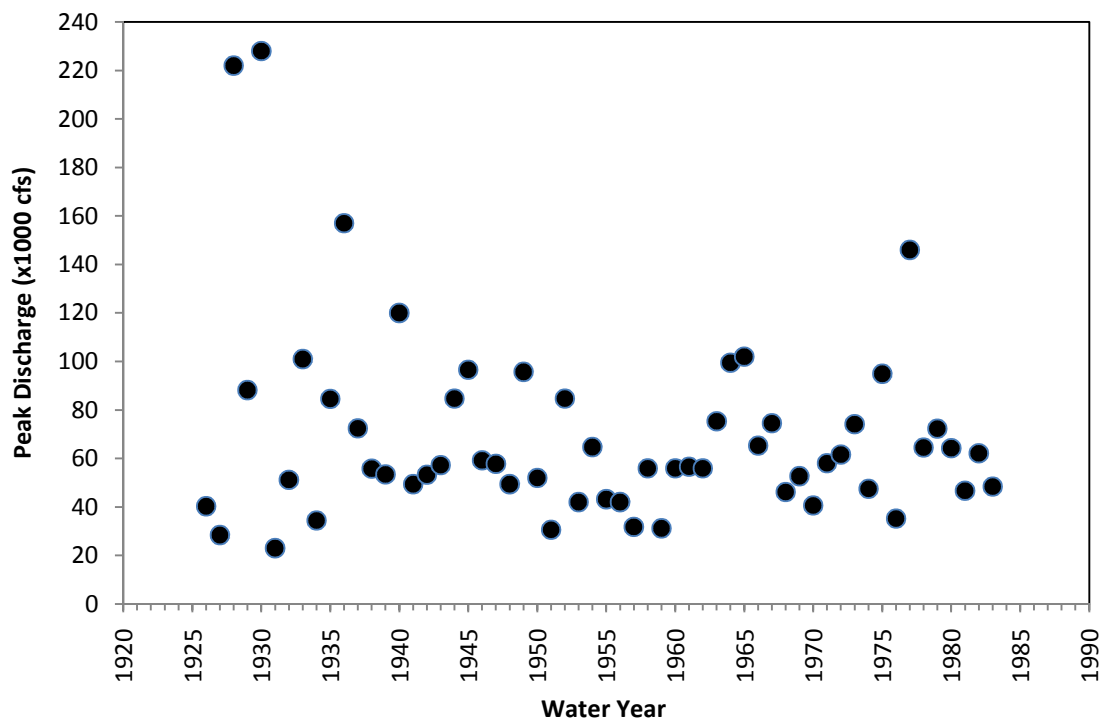
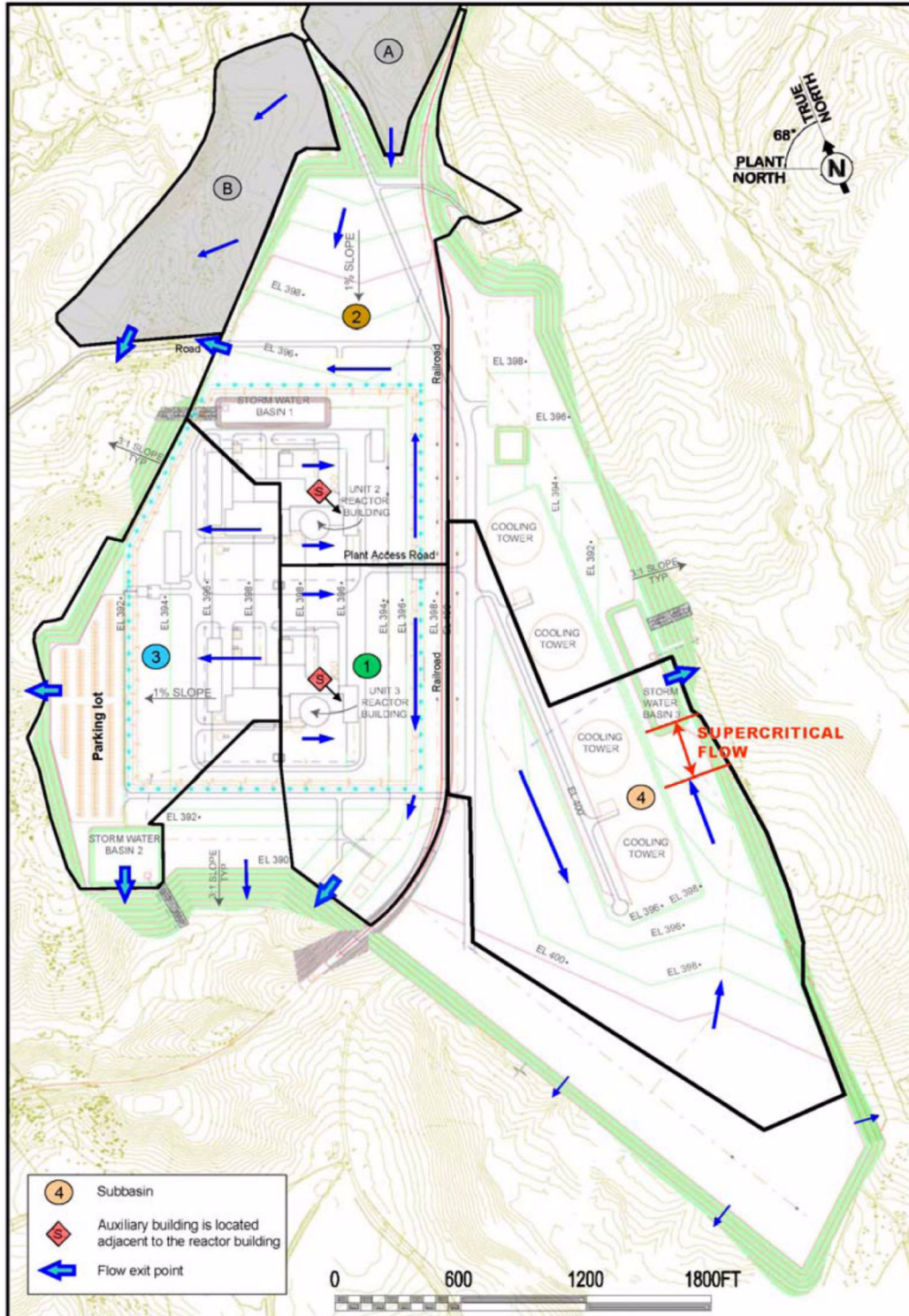


**Figure 2.4-1. Peak Discharges Reported for Alston, South Carolina**



**Figure 2.4-2. Peak Discharges Reported for Richtex, South Carolina**



**Figure 2.4-3. Plant Site Drainage Basins and Flow Paths (FSAR Figure 2.4.-261)**  
 Subbasin 5 was designated by staff for examination of flow effects at the storm water basin in Subbasin 4

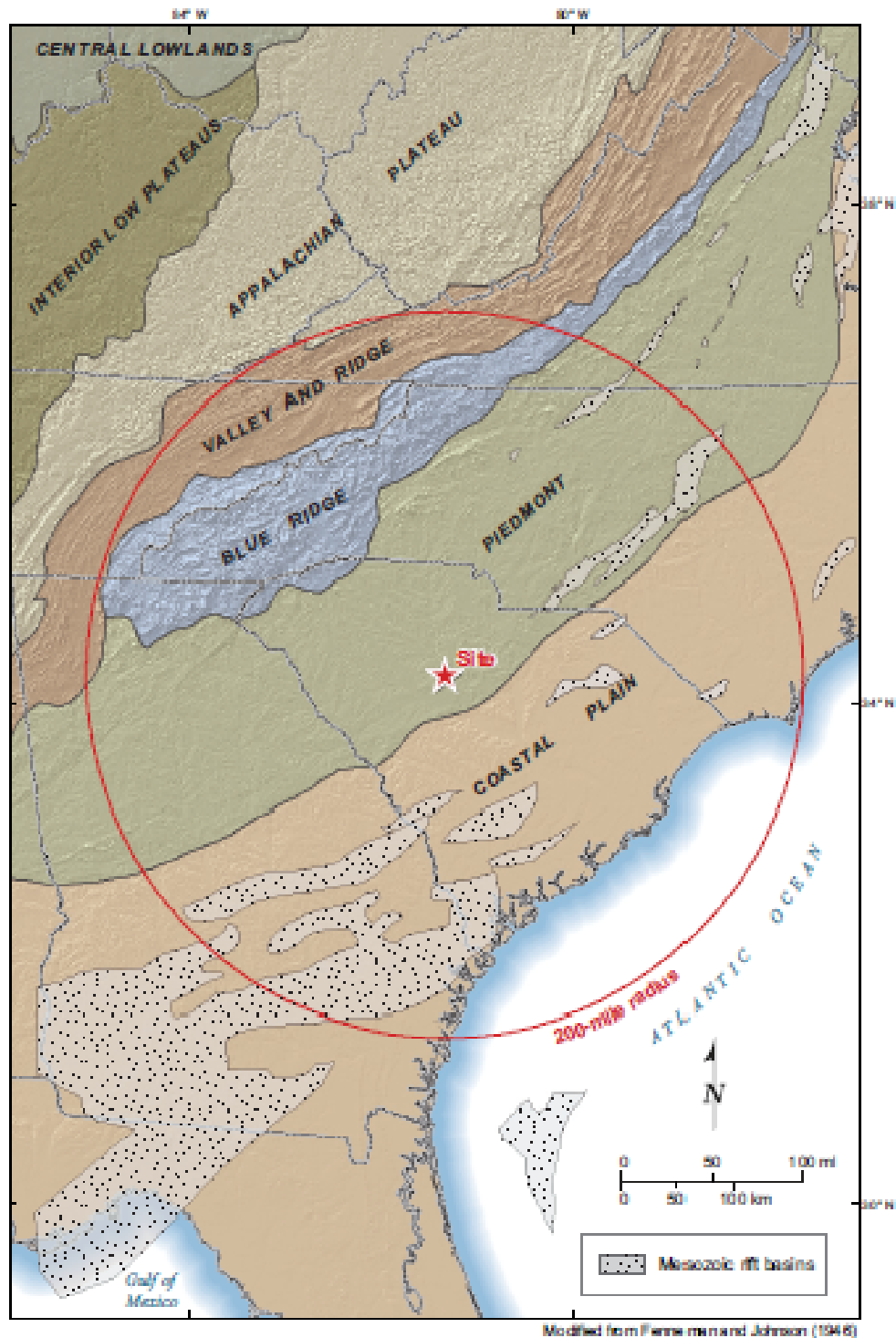


Figure 2.5.1-1. Map of Physiographic Provinces and Mesozoic Rift Basins

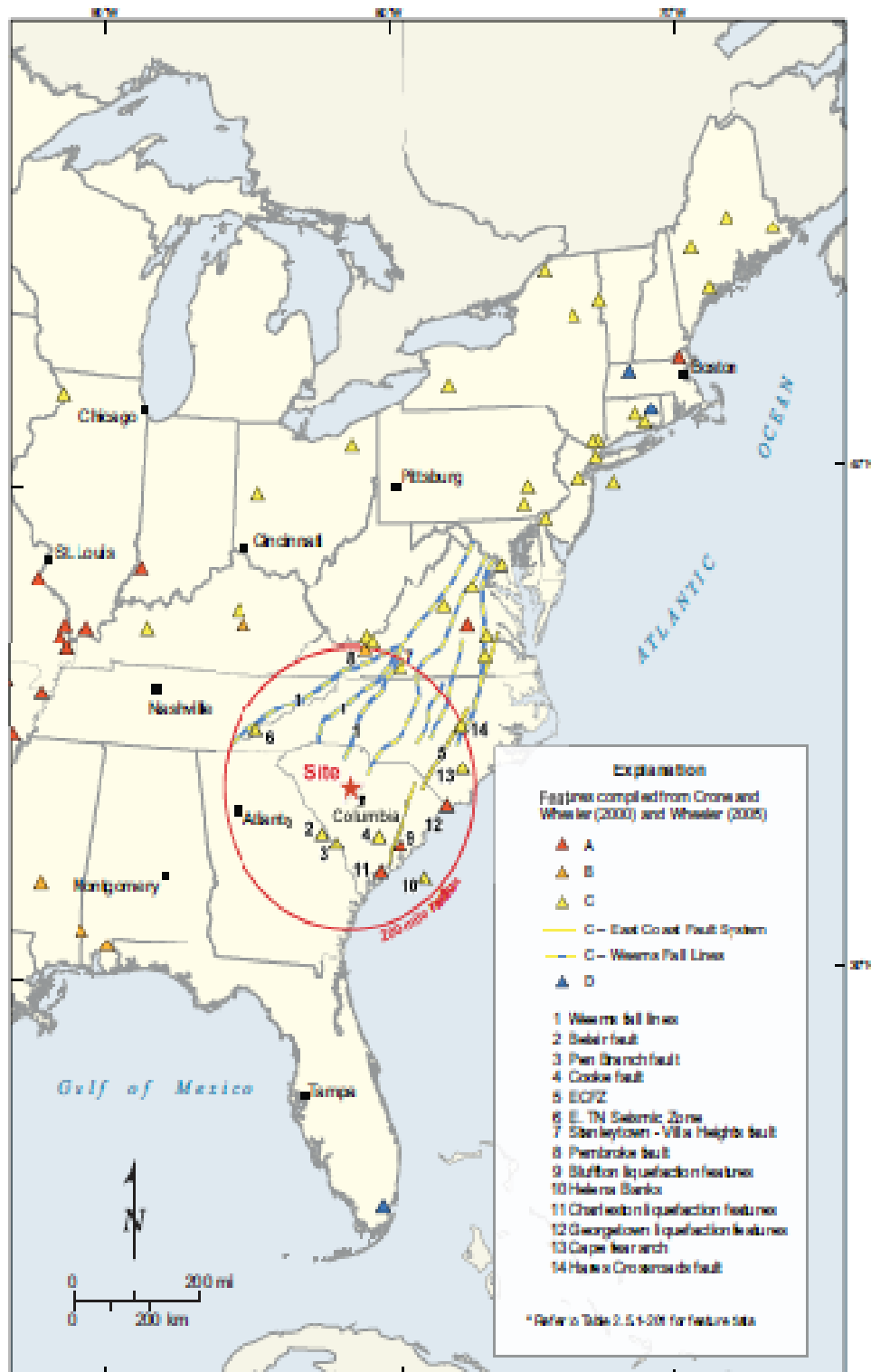


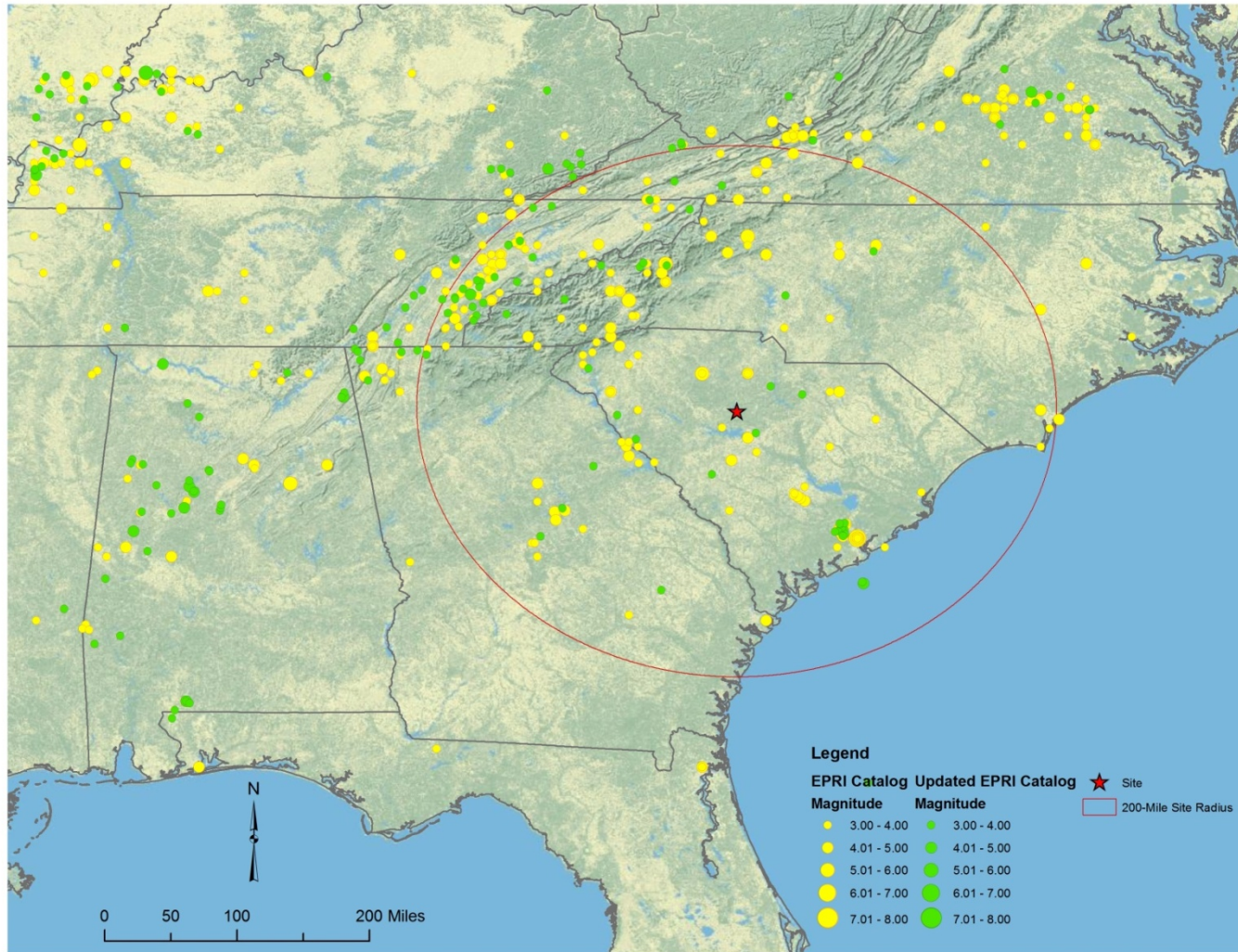
Figure 2.5.1-2. Potential Quaternary Features in the Site Region





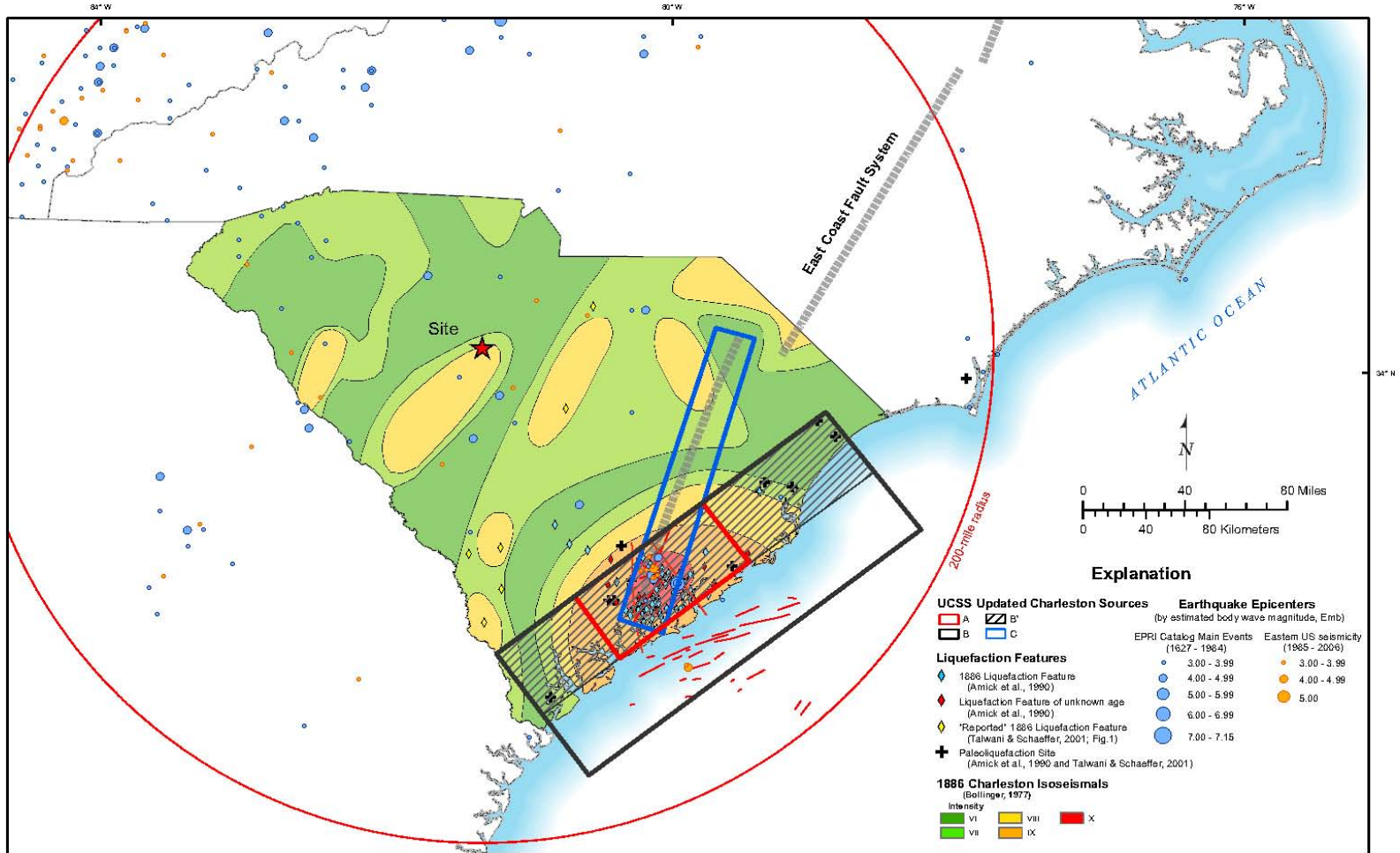


Figure 2.5.1-4. Seismic Zones and Seismicity in CEUS

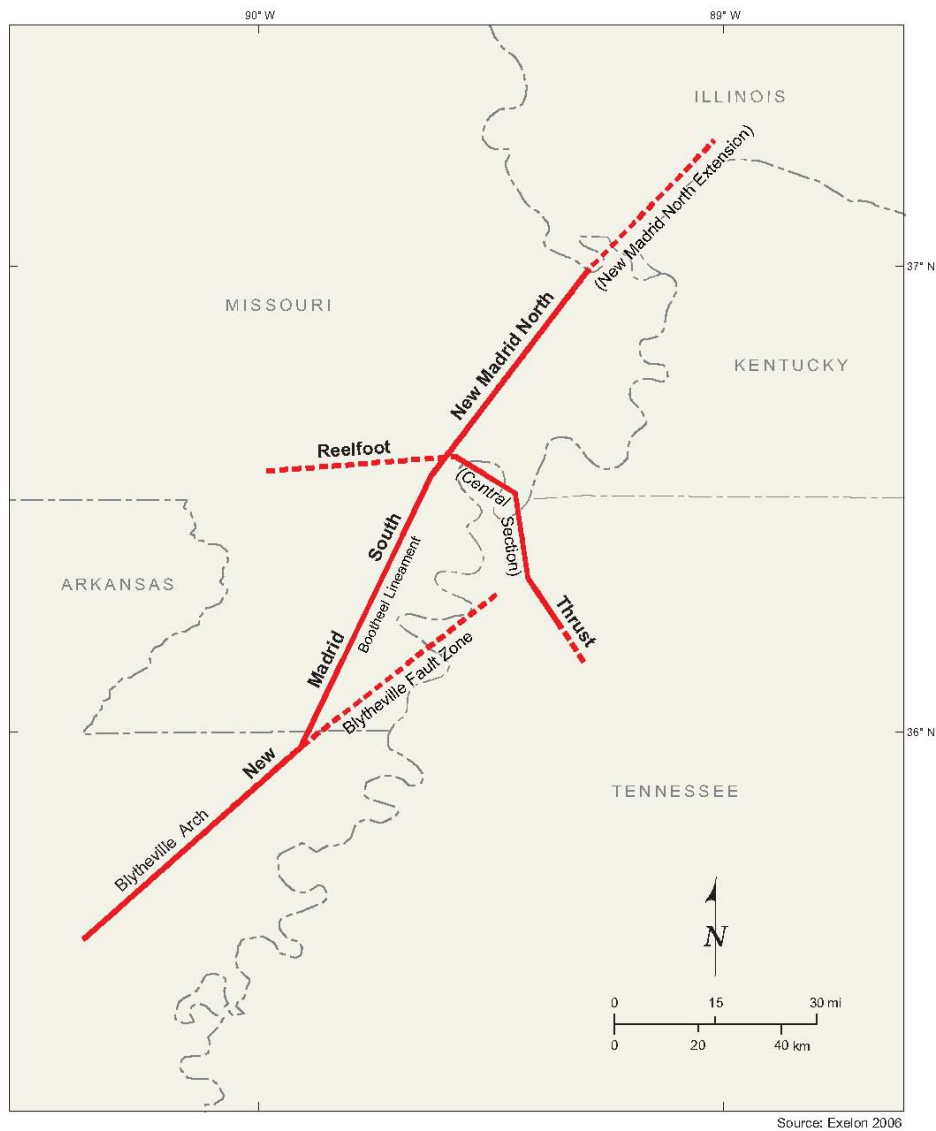


**Figure 2.5.2-1. Comparison of Events ( $m_b > 3$ ) from the EPRI Historical Catalog (Depicted by Yellow Circles) with Events from the Applicant's Updated Catalog (Depicted by Green Circles)**

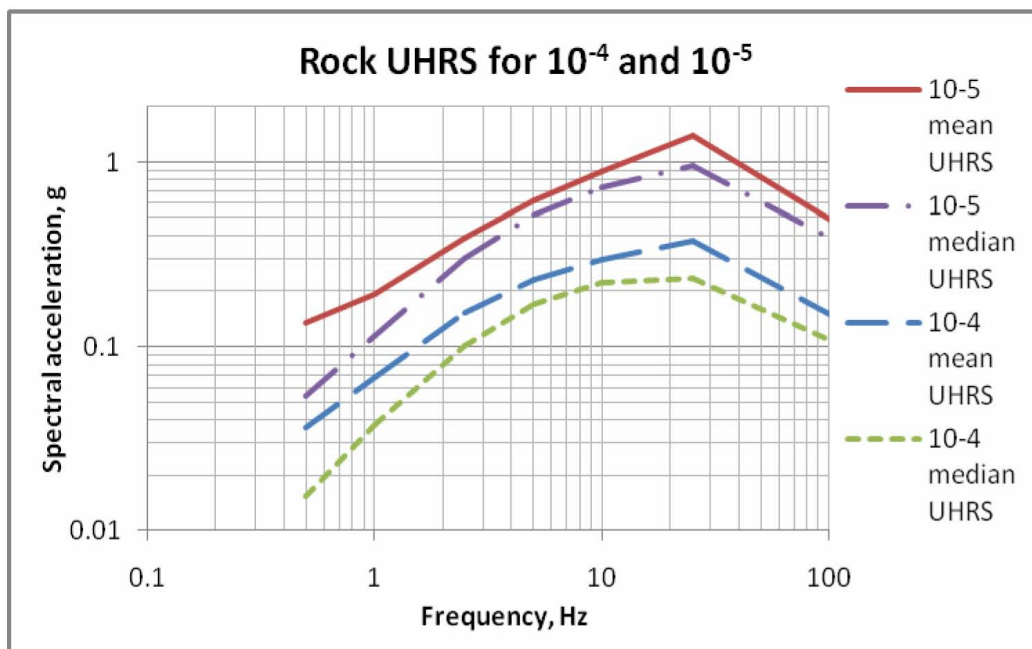




**Figure 2.5.2-2. UCSS Model**  
(Reproduced from VCSNS COL FSAR Figure 2.5.2-213)



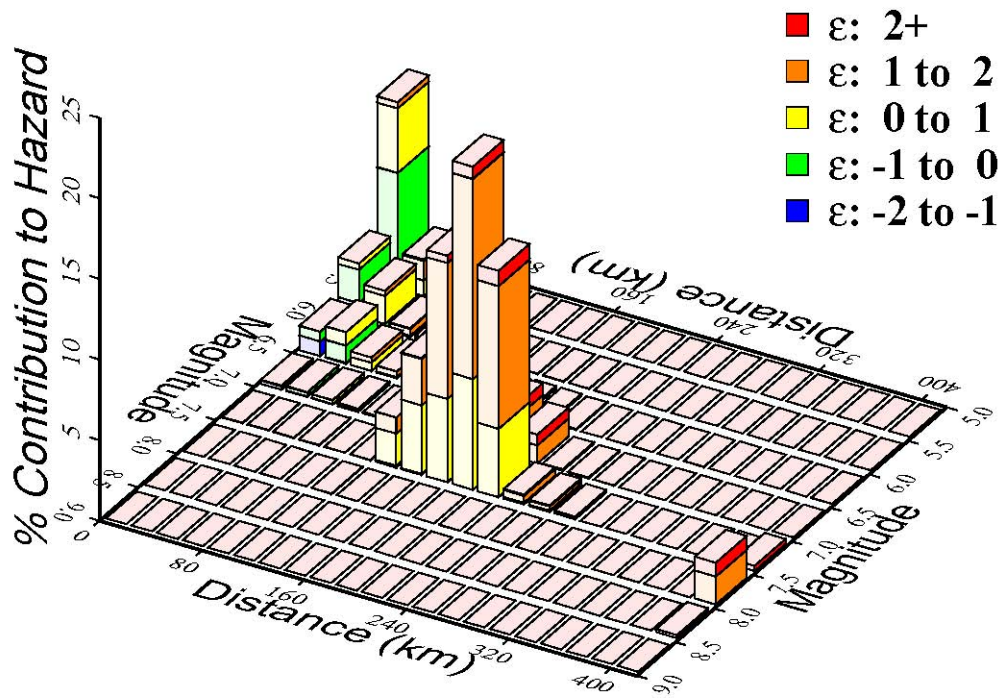
**Figure 2.5.2-3. New Madrid Faults from the Clinton ESP Source Model**  
(Reproduced from VCSNS COL FSAR Figure 2.5.2-217)



**Figure 2.5.2-4. Mean and Median Uniform Hazard Response Spectra**  
(Reproduced from VCSNS COL FSAR Figure 2.5.2-235)

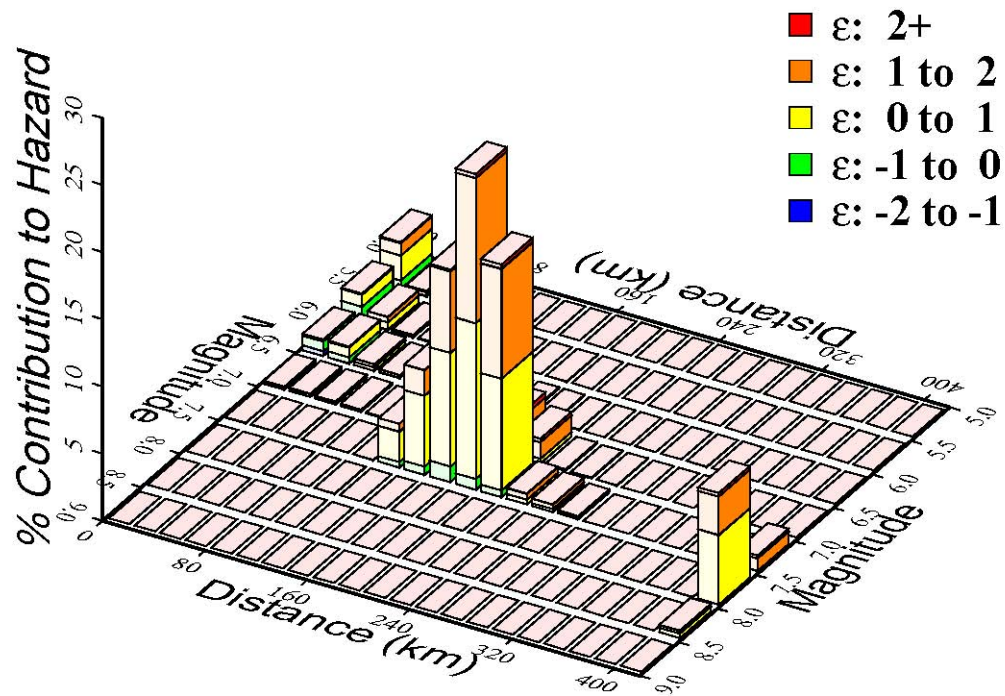


5hz + 10hz, 1E-4



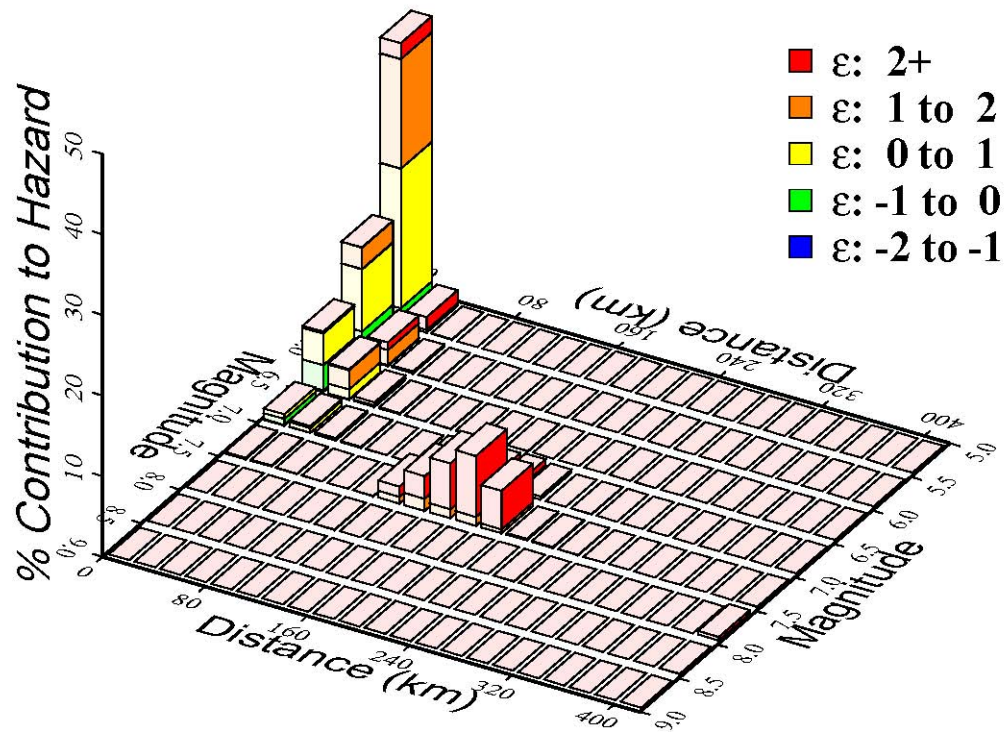
**Figure 2.5.2-5. High-frequency (5 to 10 Hz) 10<sup>-4</sup> Hazard Deaggregation**  
(Reproduced from VCSNS COL FSAR Figure 2.5.2-237)

1hz + 2.5hz, 1E-4



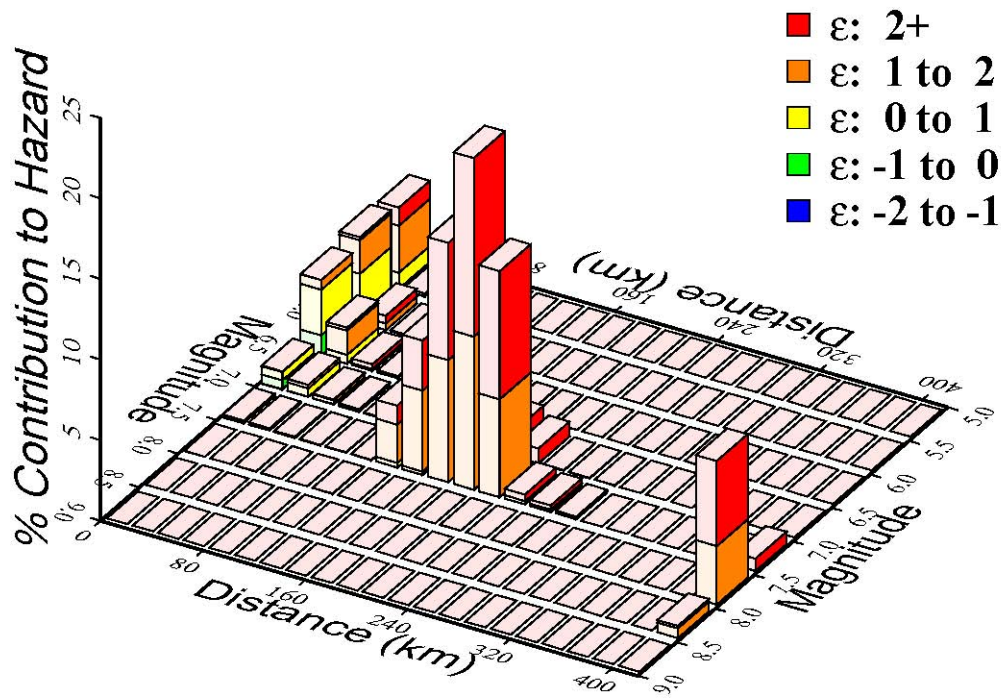
**Figure 2.5.2-6. Low-frequency (1 to 2.5 Hz) 10<sup>-4</sup> Hazard Deaggregation**  
(Reproduced from VCSNS COL FSAR Figure 2.5.2-236)

5hz + 10hz, 1E-5

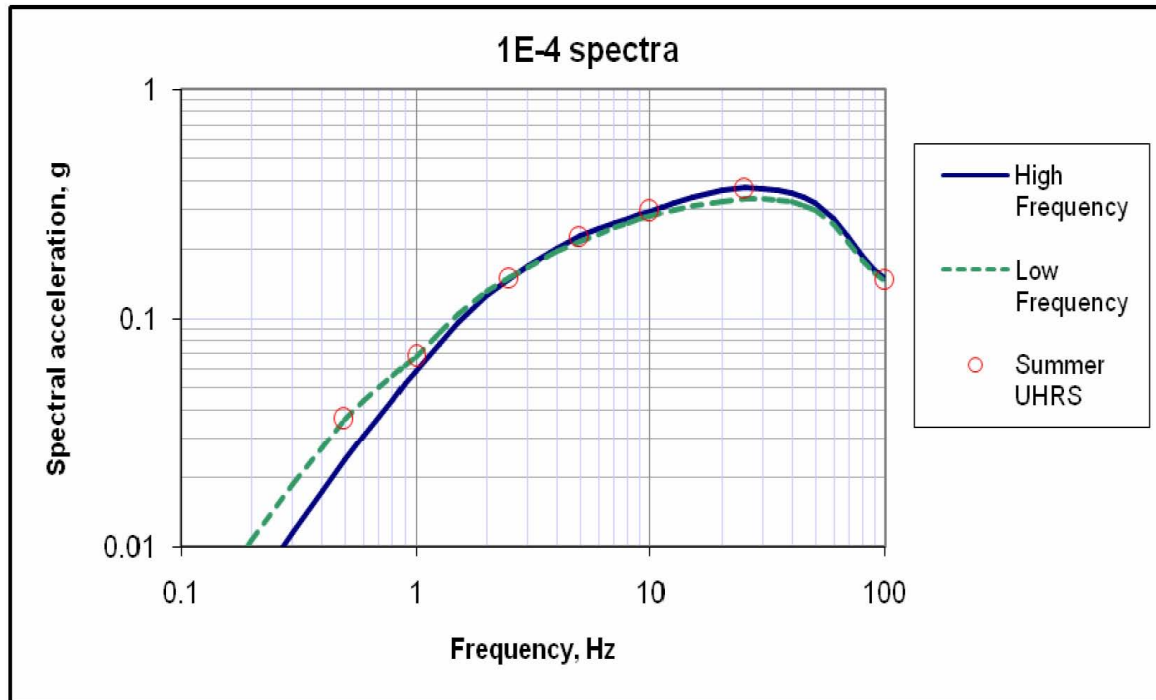


**Figure 2.5.2-7. High-frequency (5 to 10 Hz) 10-5 Hazard Deaggregation**  
(Reproduced from VCSNS COL FSAR Figure 2.5.2-239)

1hz + 2.5hz, 1E-5

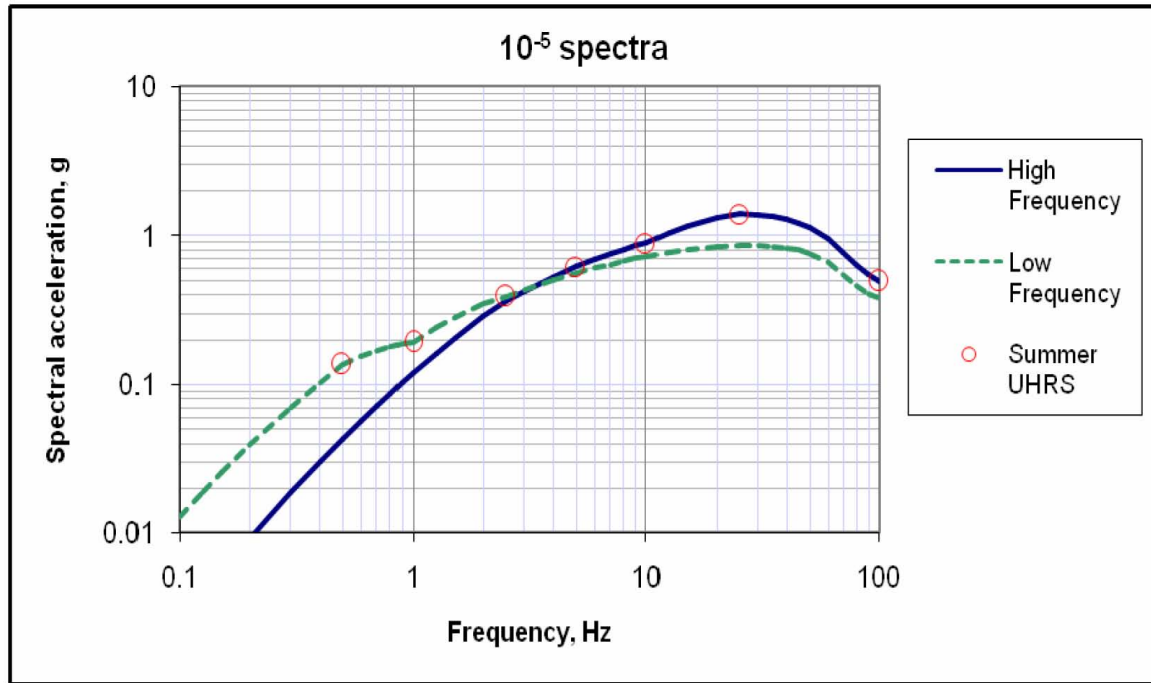


**Figure 2.5.2-8. Low-frequency (1 to 2.5 Hz) 10-5 Hazard Deaggregation**  
(Reproduced from VCSNS COL FSAR Figure 2.5.2-238)



**Figure 2.5.2-9.  $10^{-4}$  Hard Rock UHRS (Depicted by Red Circles) and  $10^{-4}$  High- and Low-Frequency Response Spectra (Depicted by Solid Blue and Dashed Green Curves, Respectively)**

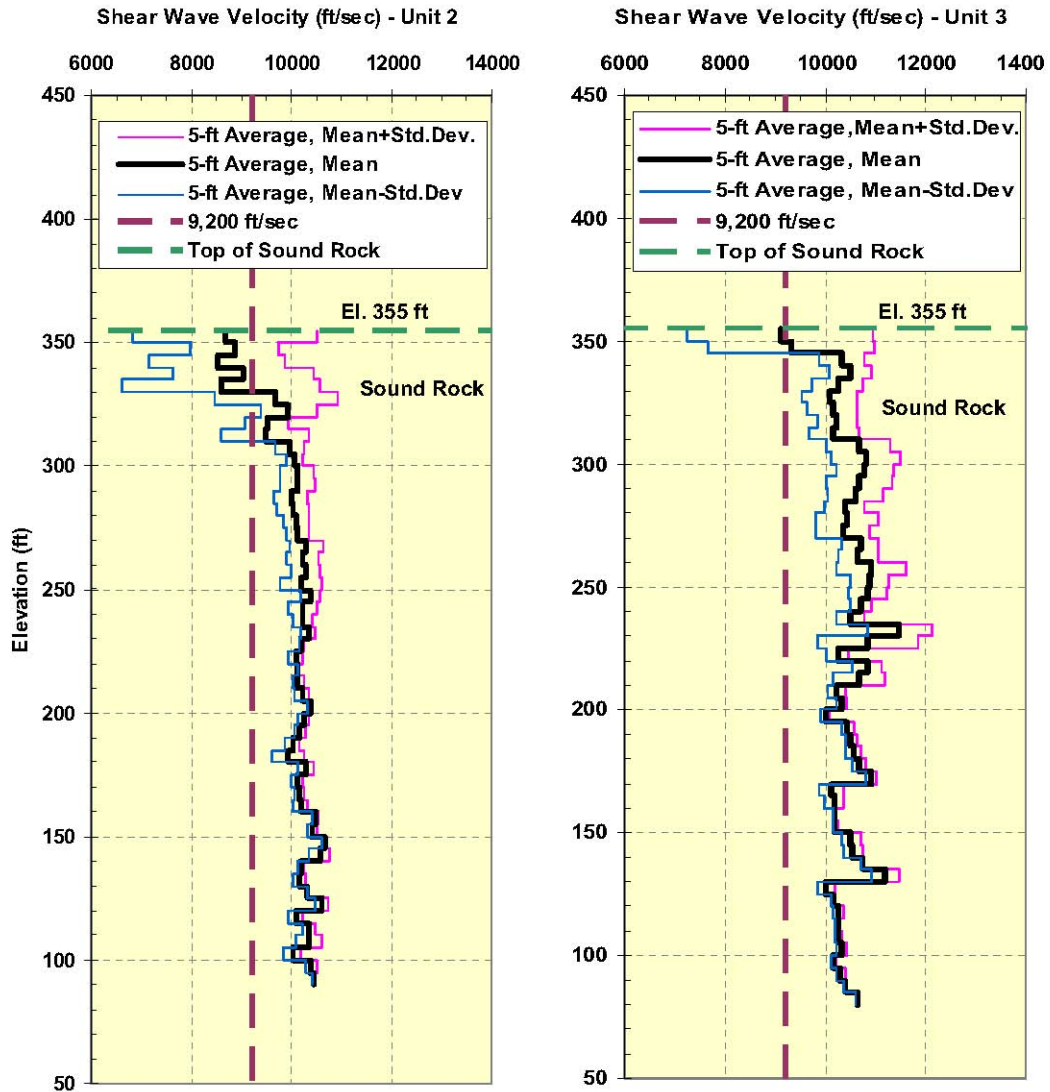
(Reproduced from VCSNS COL FSAR Figure 2.5.2-242)



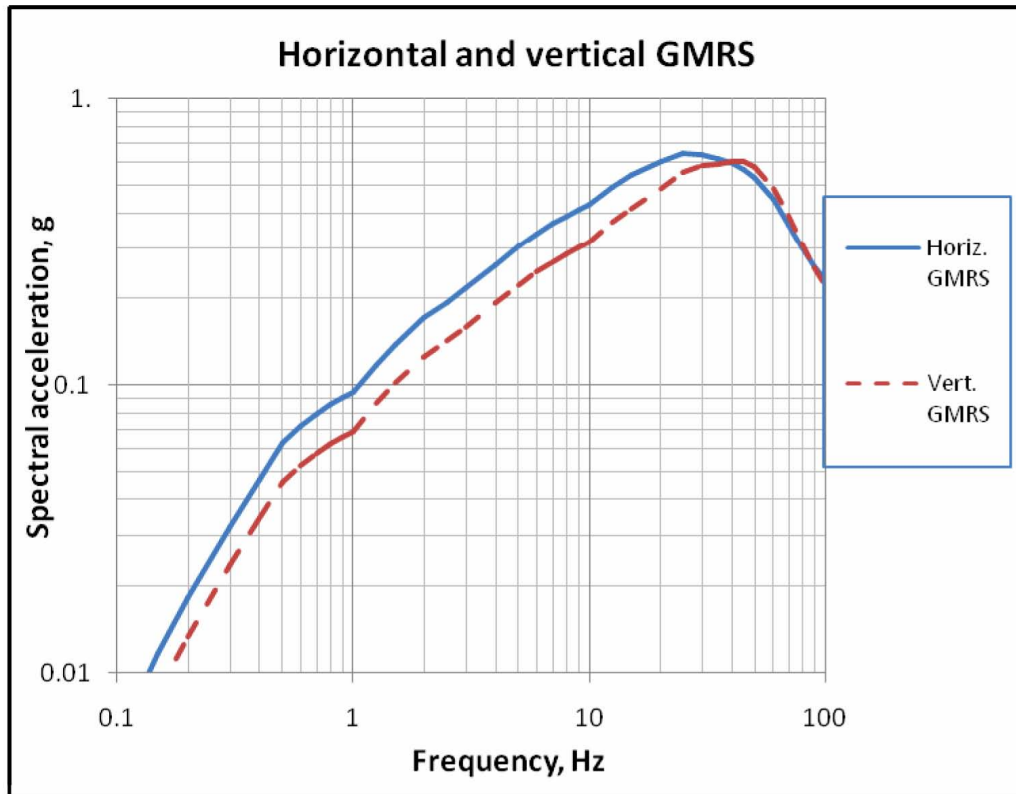
**Figure 2.5.2-10. 10<sup>-5</sup> Hard Rock UHRS (Depicted by Red Circles) and 10<sup>-5</sup> High- and Low-Frequency Response Spectra (Depicted by Solid Blue and Dashed Green Curves, Respectively)**

(Reproduced from VCSNS COL FSAR Figure 2.5.2-243)





**Figure 2.5.2-11. S-wave Velocity Profile for the VCSNS Unit 2 (Left) and Unit 3 (Right) Site**  
(Reproduced from VCSNS COL FSAR Figure 2.5.4-226)



**Figure 2.5.2-12. Horizontal (Solid Blue Curve) and Vertical (Dashed Red Curve) GMRS**  
 (Reproduced from VCSNS COL FSAR Figure 2.5.4-246)