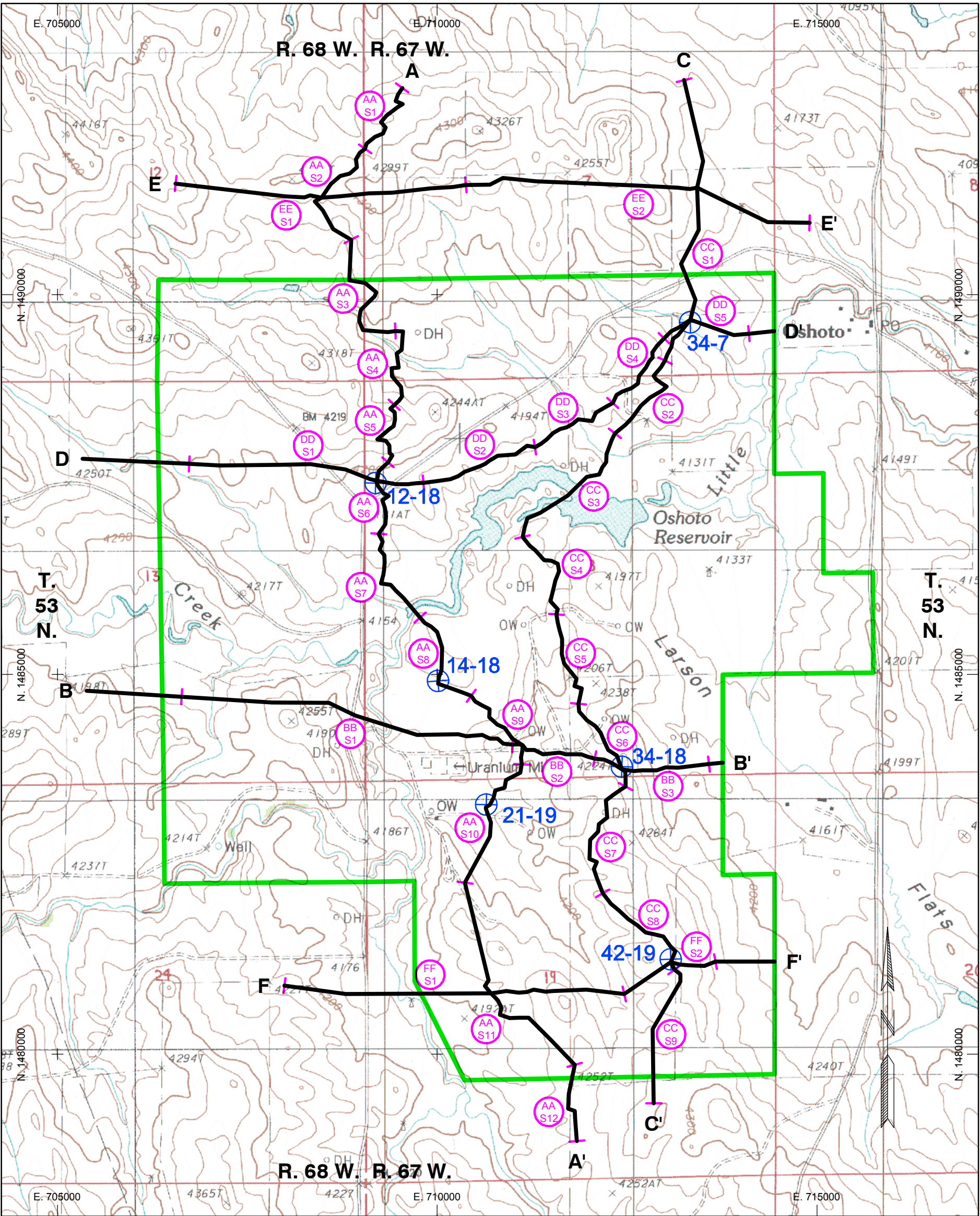


**ADDENDUM 2.6-C**  
**GEOLOGIC CROSS SECTIONS**



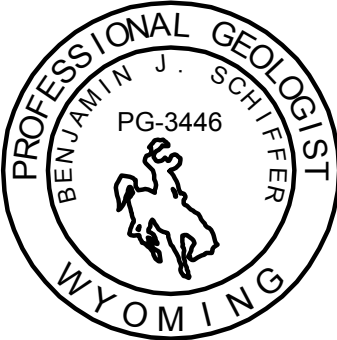
Drawing Coordinates: WY83EF

LEGEND

- PROPOSED ROSS PERMIT BOUNDARY
  - CROSS-SECTION LOCATION
  - CROSS-SECTION SEGMENT DESIGNATION (e.g. SECTION A-A', SEGMENT 1)
  - MONITORING WELL CLUSTER
- 0 1/8 1/4 1/2  
GRAPHIC SCALE (MILES)

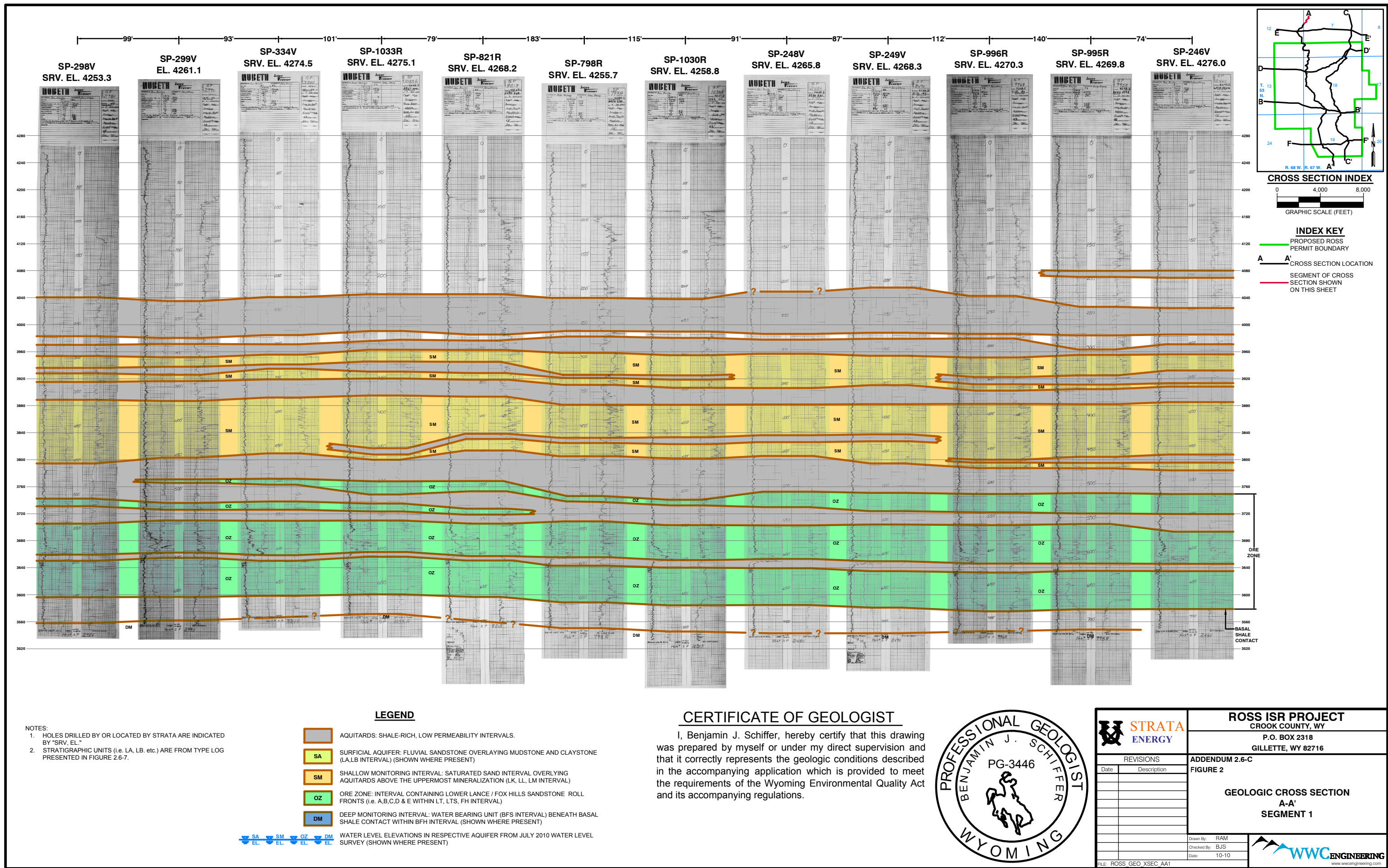
CERTIFICATE OF GEOLOGIST

I, Benjamin J. Schiffer, hereby certify that this drawing was prepared by myself or under my direct supervision and that it correctly represents the geologic conditions described in the accompanying application which is provided to meet the requirements of the Wyoming Environmental Quality Act and its accompanying regulations.

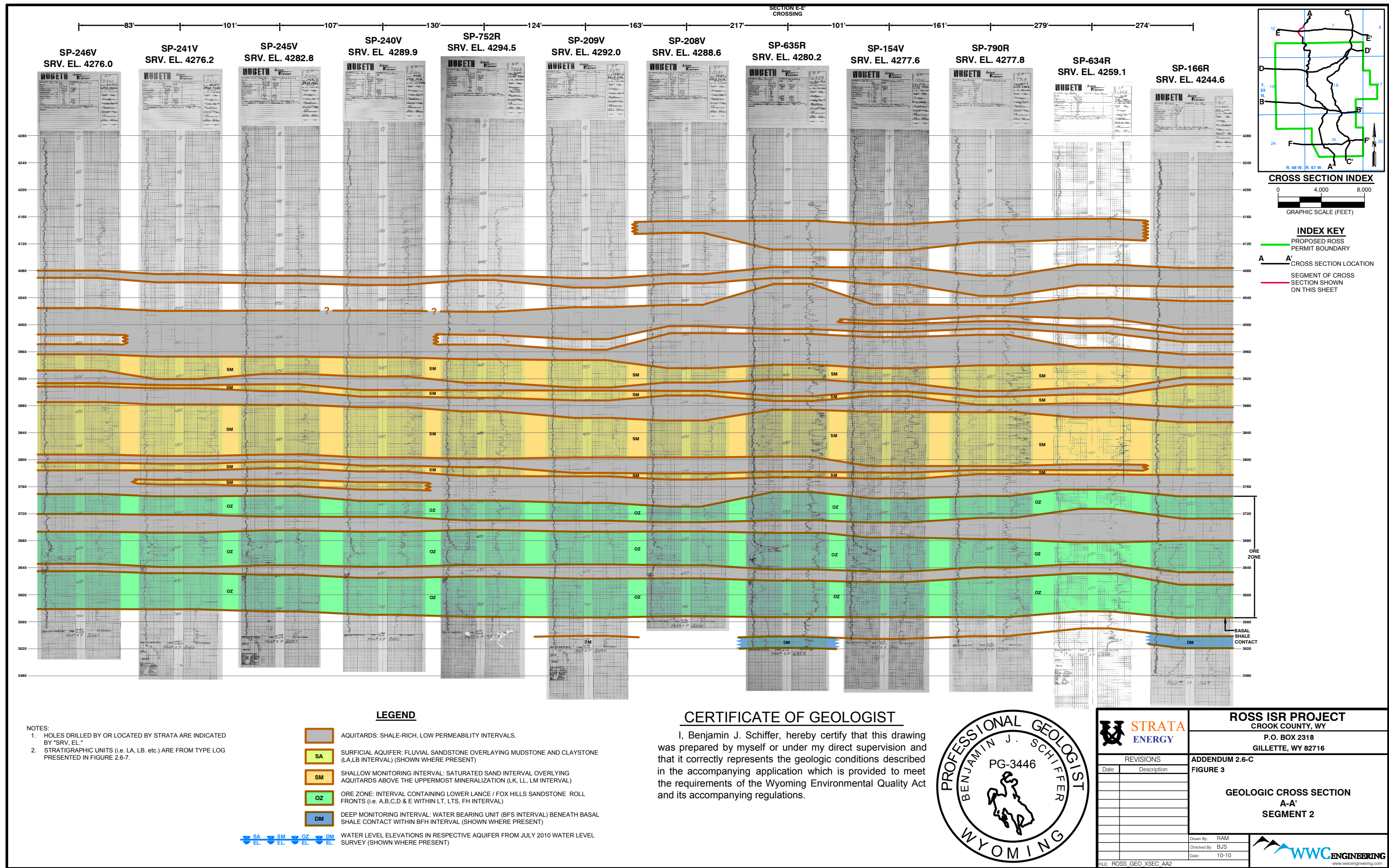


		ROSS ISR PROJECT CROOK COUNTY, WY P.O. BOX 2318 GILLETTE, WY 82716	
REVISIONS		ADDENDUM 2.6-C FIGURE 1	
Date	Description	GEOLOGIC CROSS SECTION LOCATION MAP	
		Drawn By: RAM	
		Checked By: BJS	
		Date: 11/23/10	
FILE: ROSS TR GEO_XSKEY			

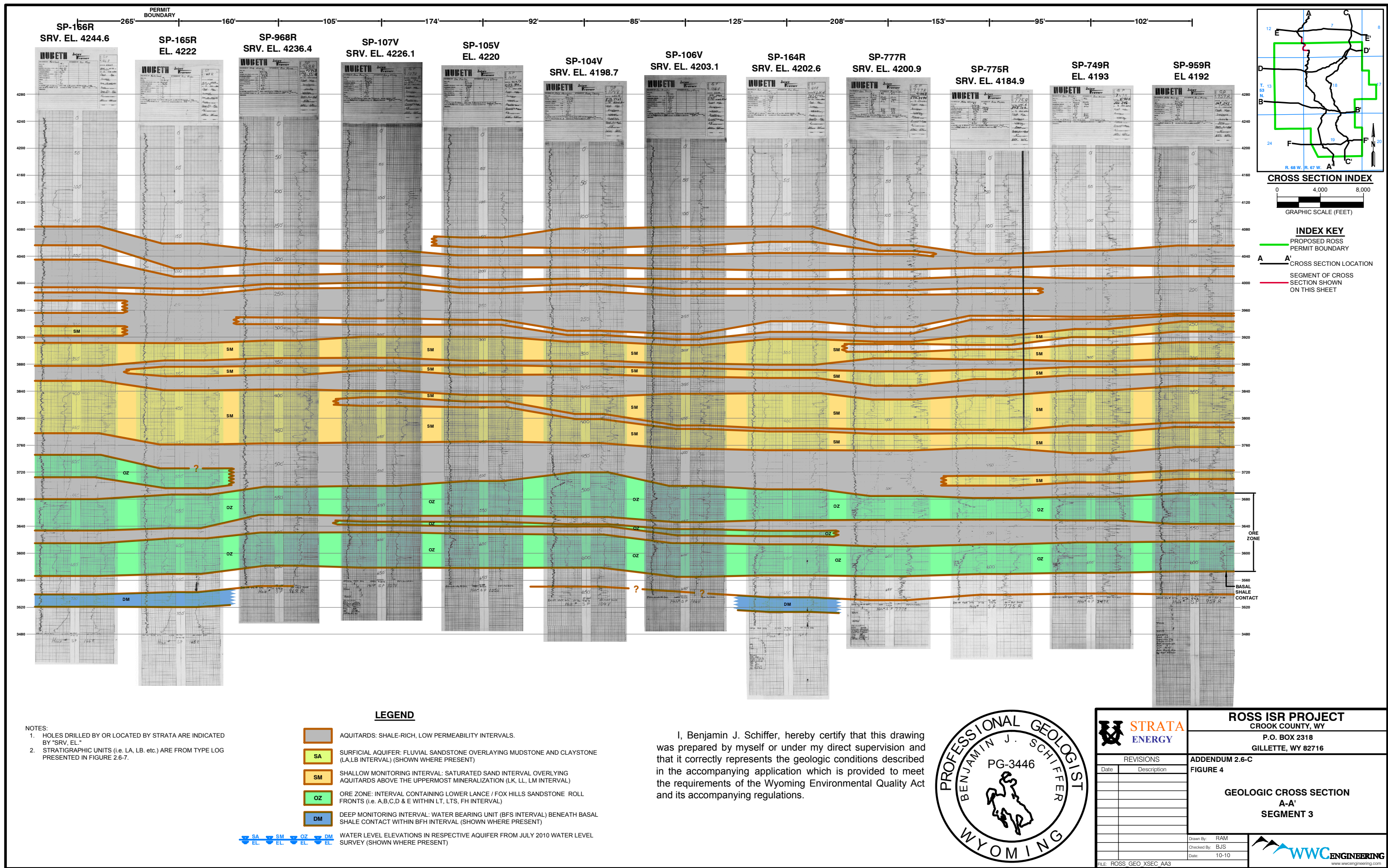




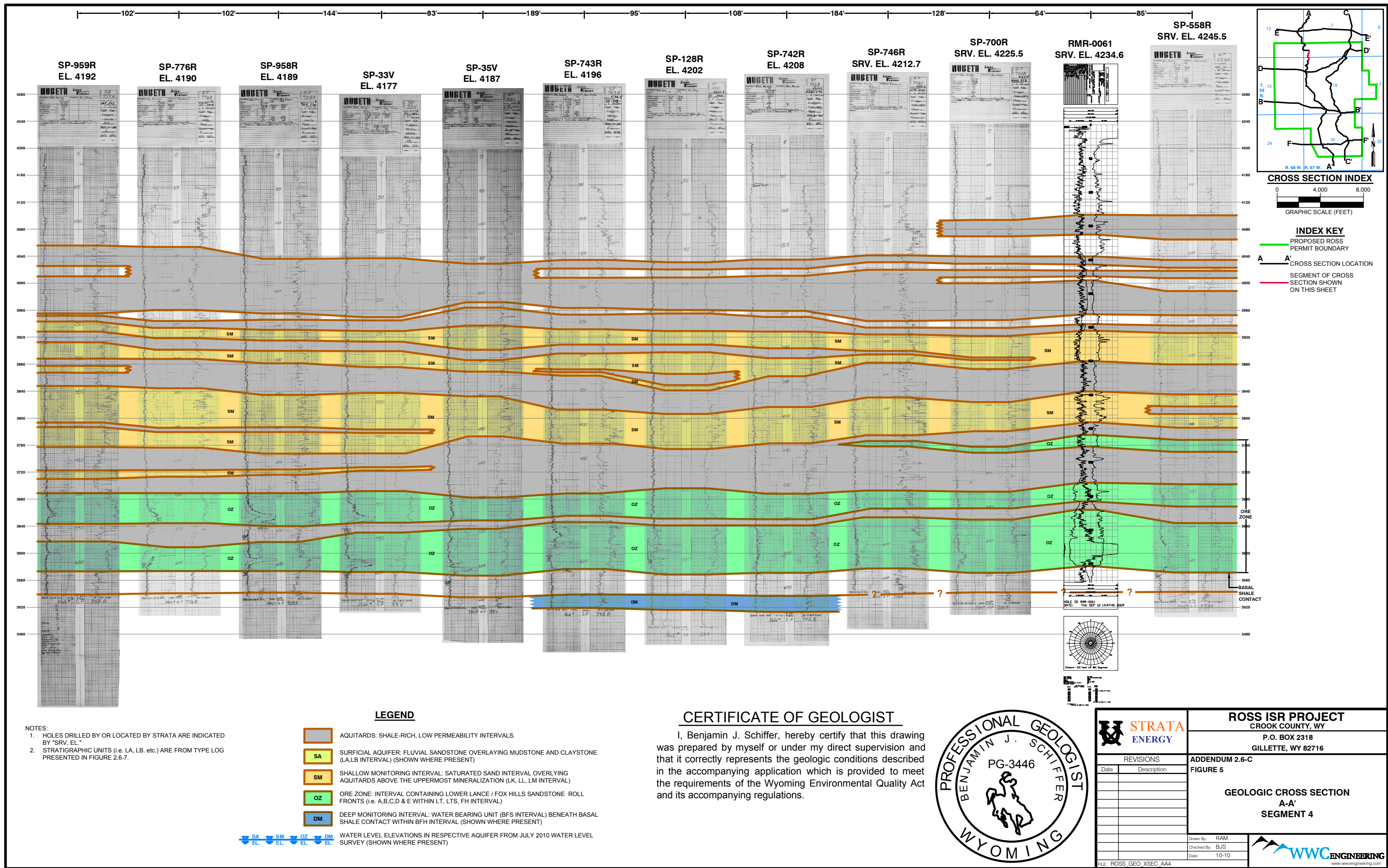




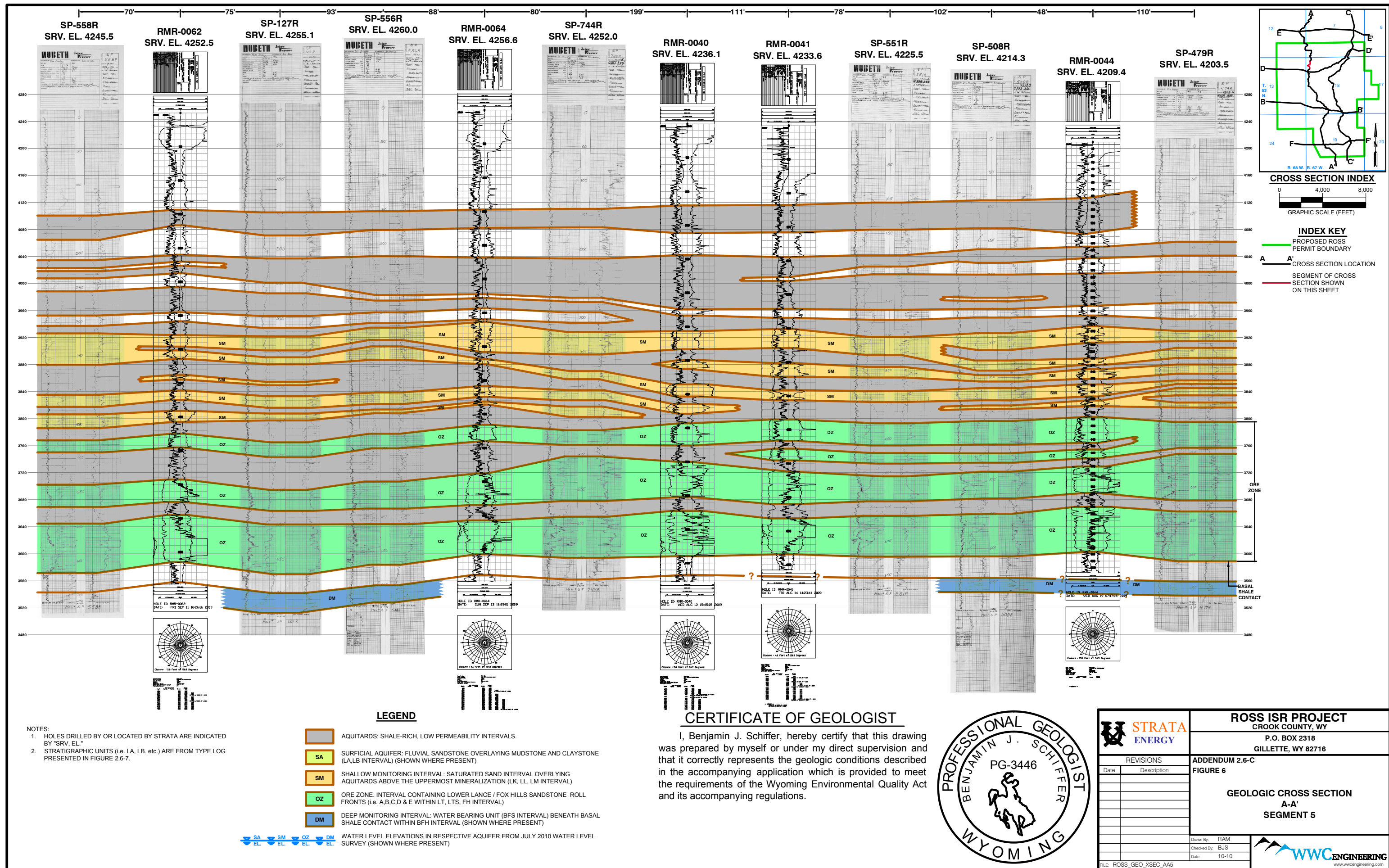




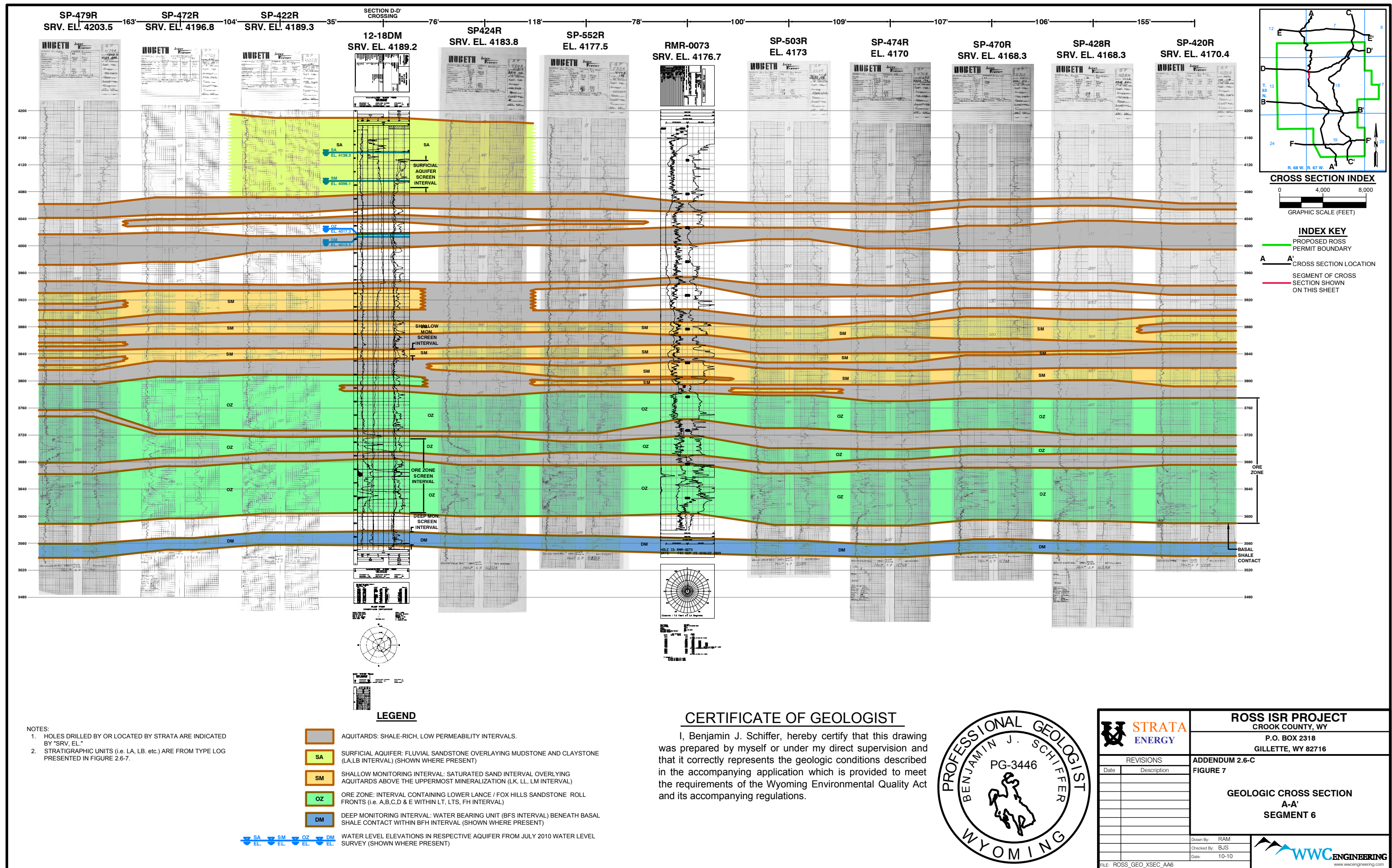




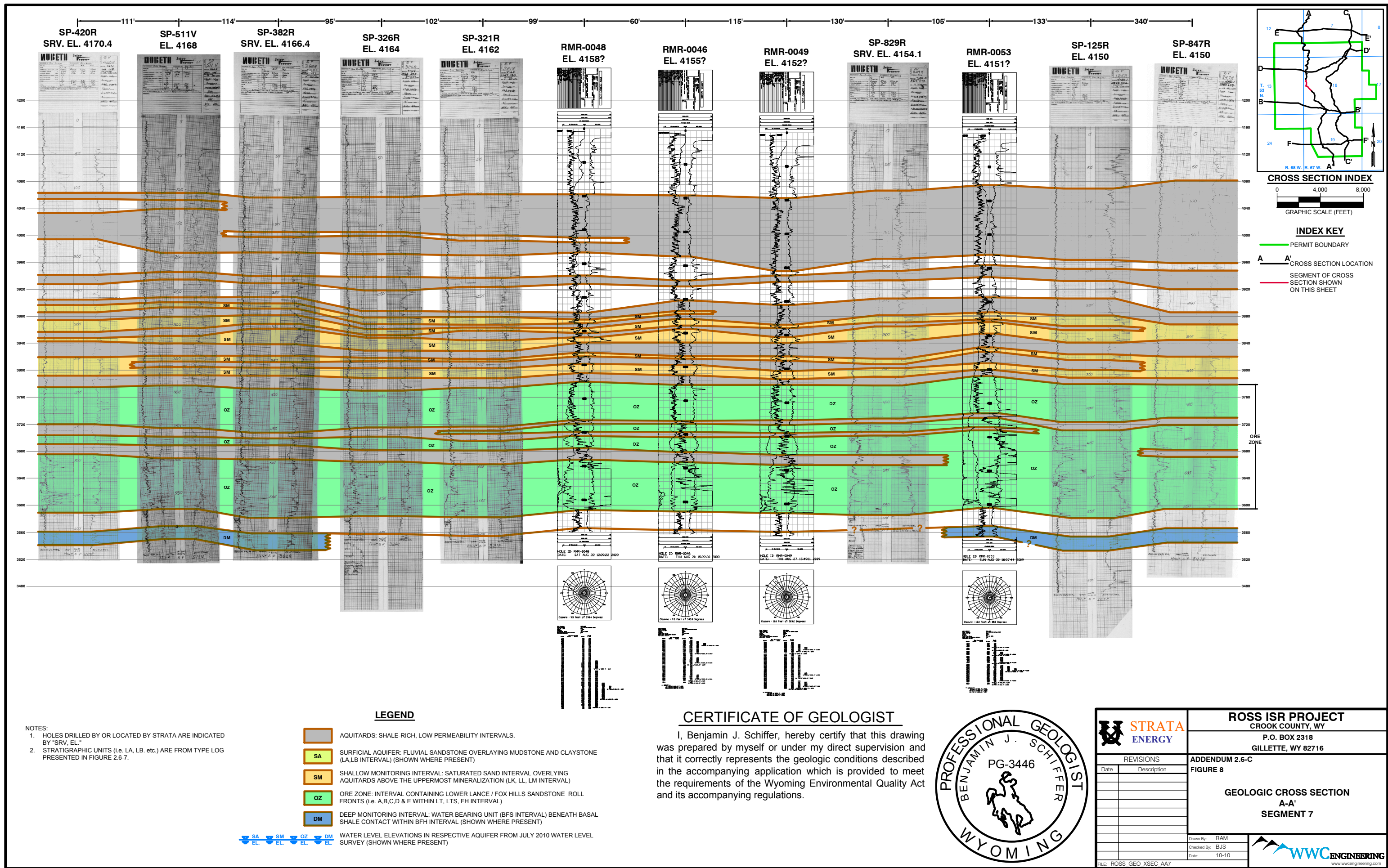




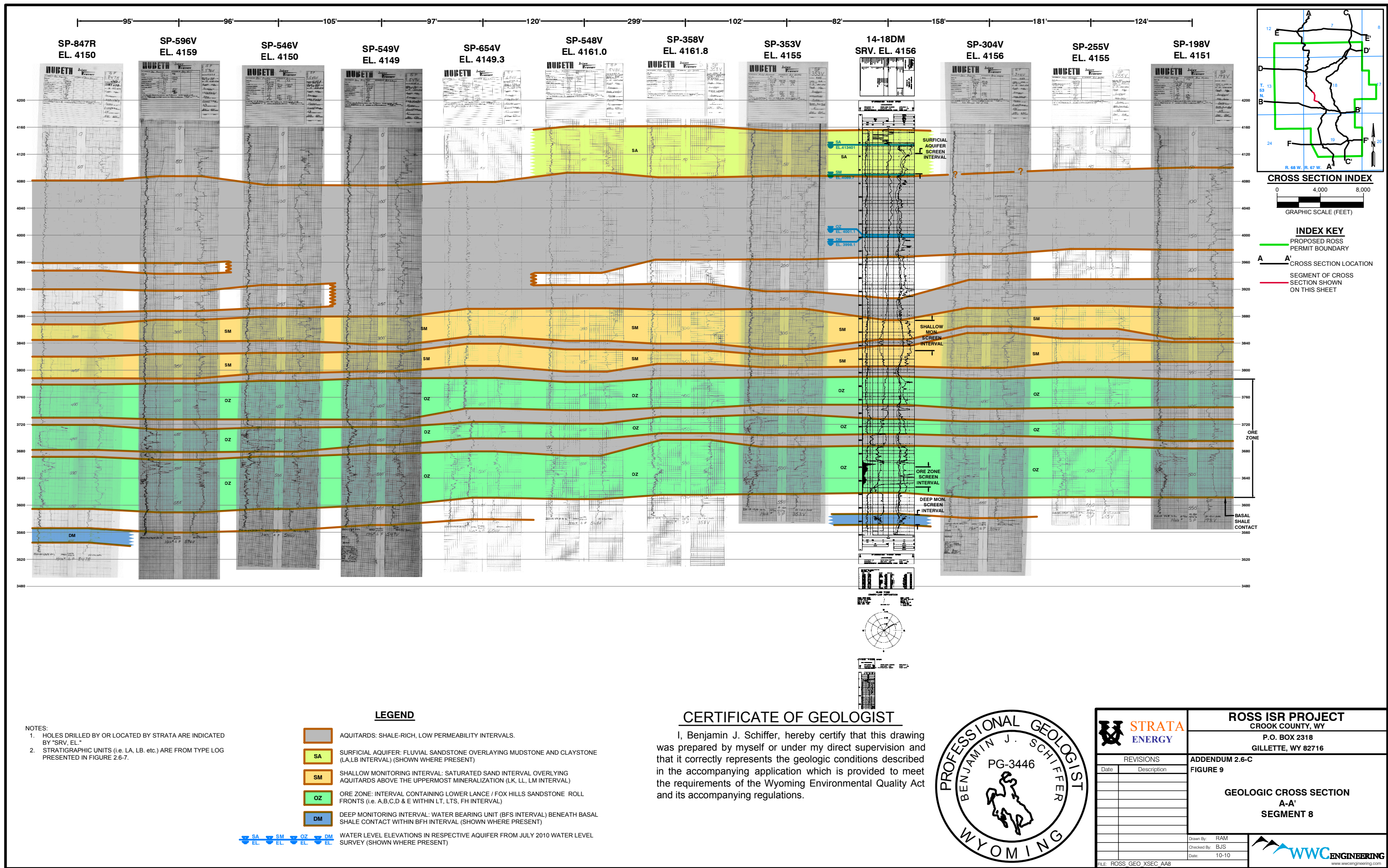




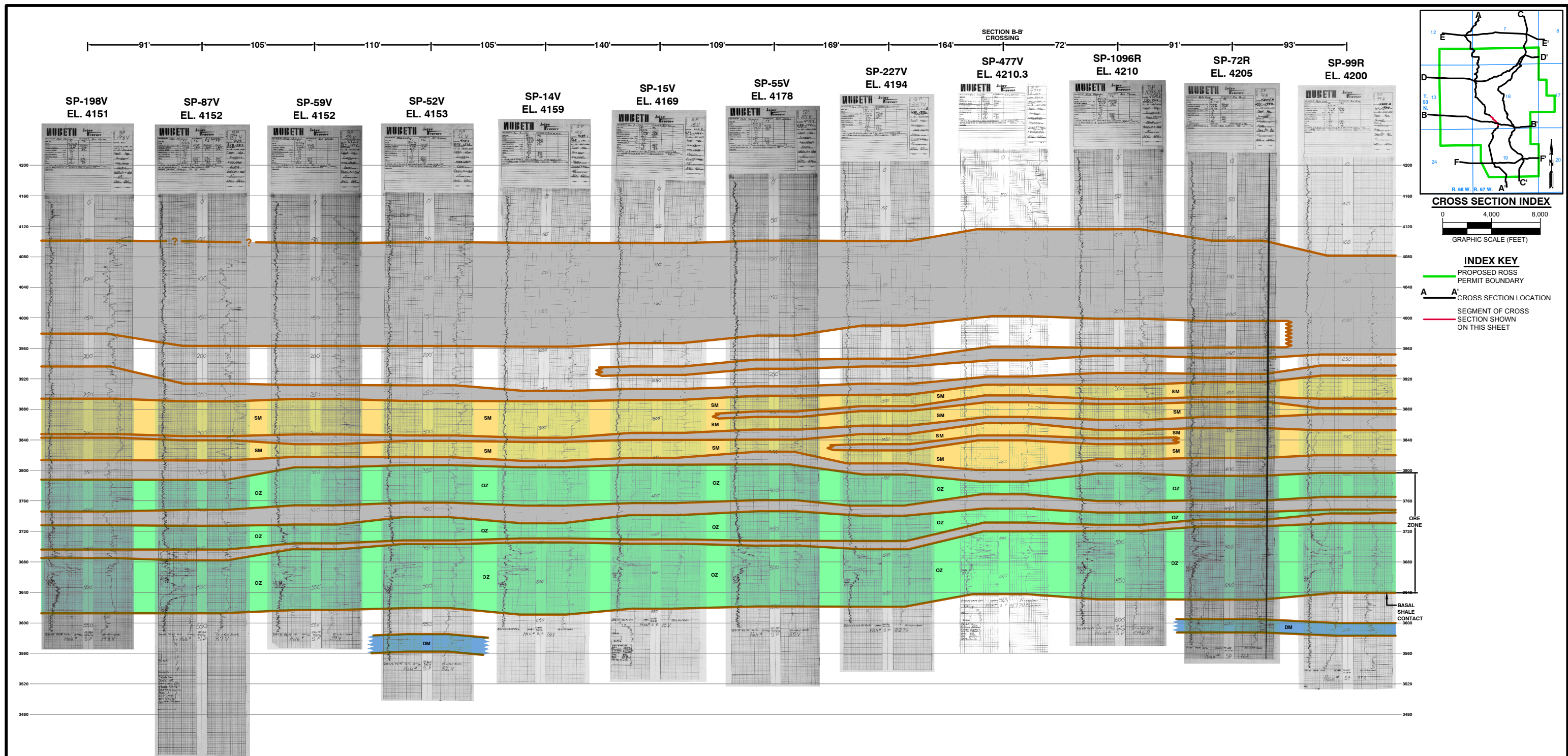












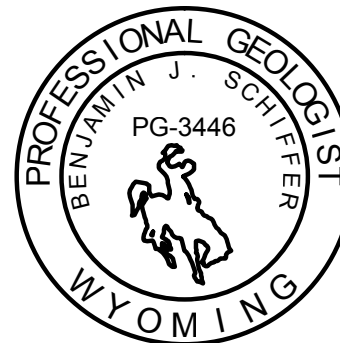
NOTES:  
1. HOLES DRILLED BY OR LOCATED BY STRATA ARE INDICATED BY "SRV, EL."  
2. STRATIGRAPHIC UNITS (i.e. LA, LB, etc.) ARE FROM TYPE LOG PRESENTED IN FIGURE 2.6-7.



#### LEGEND

- AQUITARDS: SHALE-RICH, LOW PERMEABILITY INTERVALS.
  - SA SURFICIAL AQUIFER: FLUVIAL SANDSTONE OVERLAYING MUDSTONE AND CLAYSTONE (LA, LB INTERVAL) (SHOWN WHERE PRESENT)
  - SM SHALLOW MONITORING INTERVAL: SATURATED SAND INTERVAL OVERLYING AQUITARDS ABOVE THE UPPERMOST MINERALIZATION (LK, LL, LM INTERVAL)
  - OZ ORE ZONE: INTERVAL CONTAINING LOWER LANCE / FOX HILLS SANDSTONE ROLL FRONTS (i.e. A,B,C,D & E WITHIN LT, LTS, FH INTERVAL)
  - DM DEEP MONITORING INTERVAL: WATER BEARING UNIT (BFS INTERVAL) BENEATH BASAL SHALE CONTACT WITHIN BFH INTERVAL (SHOWN WHERE PRESENT)
- WATER LEVEL ELEVATIONS IN RESPECTIVE AQUIFER FROM JULY 2010 WATER LEVEL SURVEY (SHOWN WHERE PRESENT)

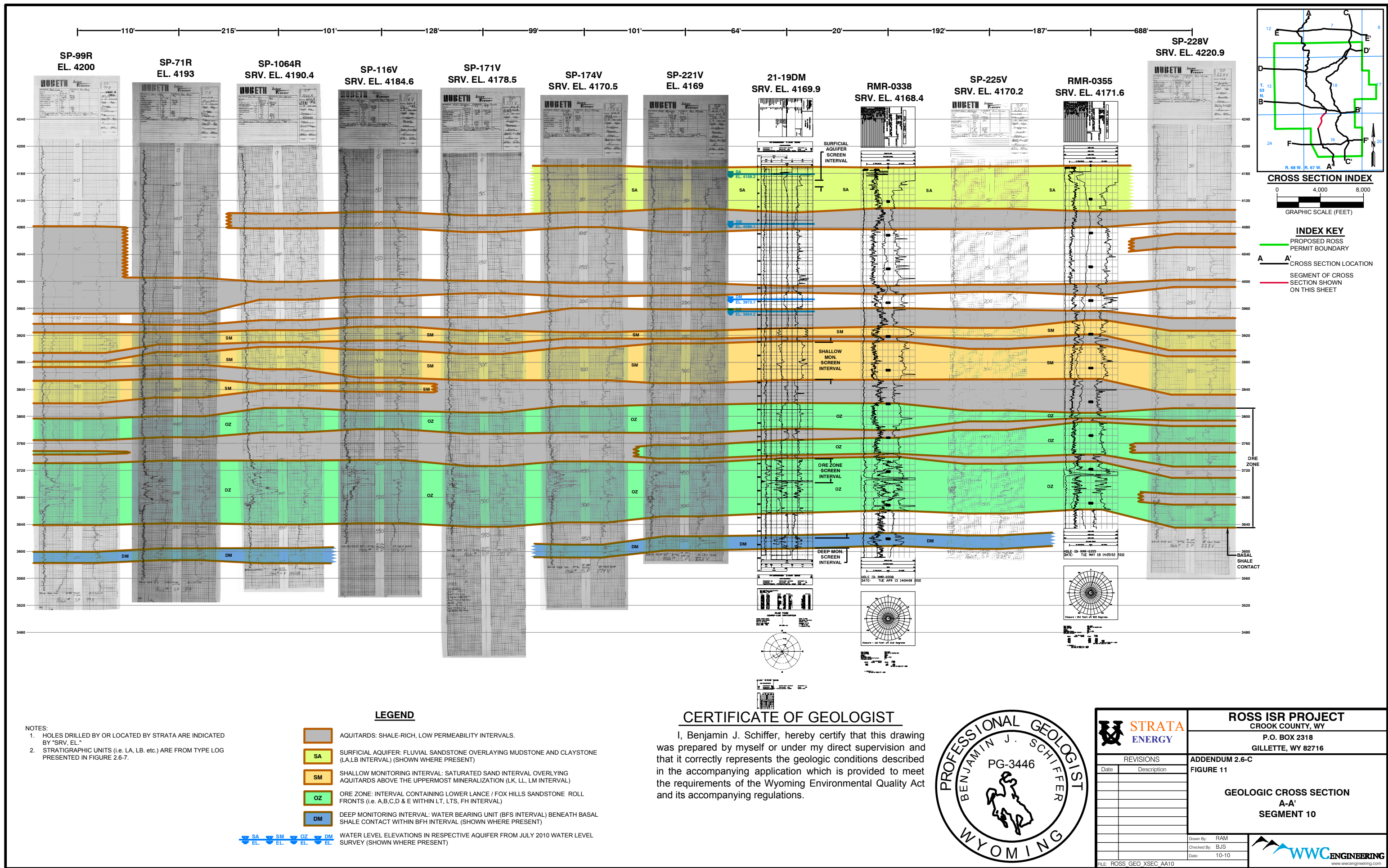
#### CERTIFICATE OF GEOLOGIST

I, Benjamin J. Schiffer, hereby certify that this drawing was prepared by myself or under my direct supervision and that it correctly represents the geologic conditions described in the accompanying application which is provided to meet the requirements of the Wyoming Environmental Quality Act and its accompanying regulations.

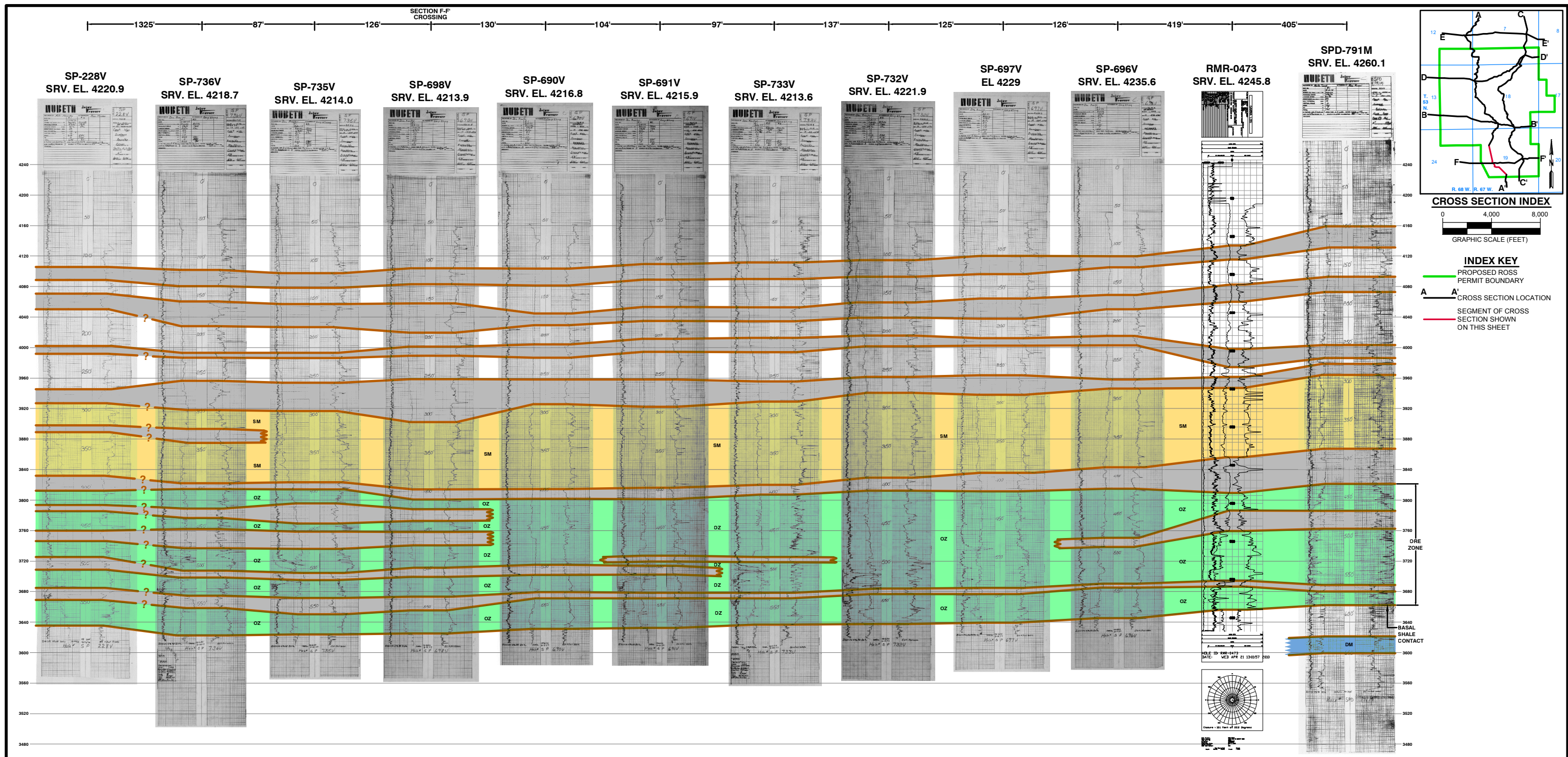


		<b>ROSS ISR PROJECT</b> CROOK COUNTY, WY	
<b>STRATA ENERGY</b>		P.O. BOX 2318 GILLETTE, WY 82716	
REVISIONS		ADDENDUM 2.6-C	
Date	Description	FIGURE 10	
		<b>GEOLOGIC CROSS SECTION</b> <b>A-A'</b> <b>SEGMENT 9</b>	
		Drawn By: RAM	
		Checked By: BJS	
		Date: 10-10	
FILE: ROSS_GEO_XSEC_AA9		www.wwcengineering.com	









NOTES:  
1. HOLES DRILLED BY OR LOCATED BY STRATA ARE INDICATED BY "SRV. EL."  
2. STRATIGRAPHIC UNITS (i.e. LA, LB, etc.) ARE FROM TYPE LOG PRESENTED IN FIGURE 2.6-7.

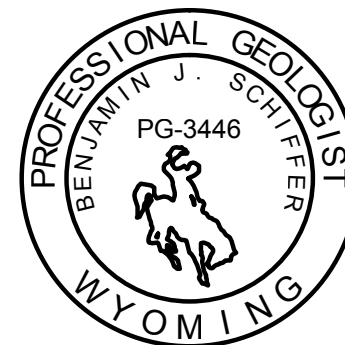
**LEGEND**

- AQUITARDS: SHALE-RICH, LOW PERMEABILITY INTERVALS.
- SA SURFICIAL AQUIFER: FLUVIAL SANDSTONE OVERLAYING MUDSTONE AND CLAYSTONE (LA, LB INTERVAL) (SHOWN WHERE PRESENT)
- SM SHALLOW MONITORING INTERVAL: SATURATED SAND INTERVAL OVERLYING AQUITARDS ABOVE THE UPPERMOST MINERALIZATION (LK, LL, LM INTERVAL)
- OZ ORE ZONE: INTERVAL CONTAINING LOWER LANCE / FOX HILLS SANDSTONE ROLL FRONTS (i.e. A,B,C,D & E WITHIN LT, LTS, FH INTERVAL)
- DM DEEP MONITORING INTERVAL: WATER BEARING UNIT (BFS INTERVAL) BENEATH BASAL SHALE CONTACT WITHIN BFH INTERVAL (SHOWN WHERE PRESENT)

SA EL SM EL OZ EL DM EL  
WATER LEVEL ELEVATIONS IN RESPECTIVE AQUIFER FROM JULY 2010 WATER LEVEL SURVEY (SHOWN WHERE PRESENT)

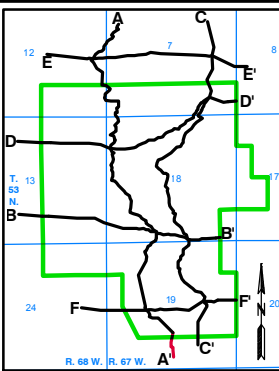
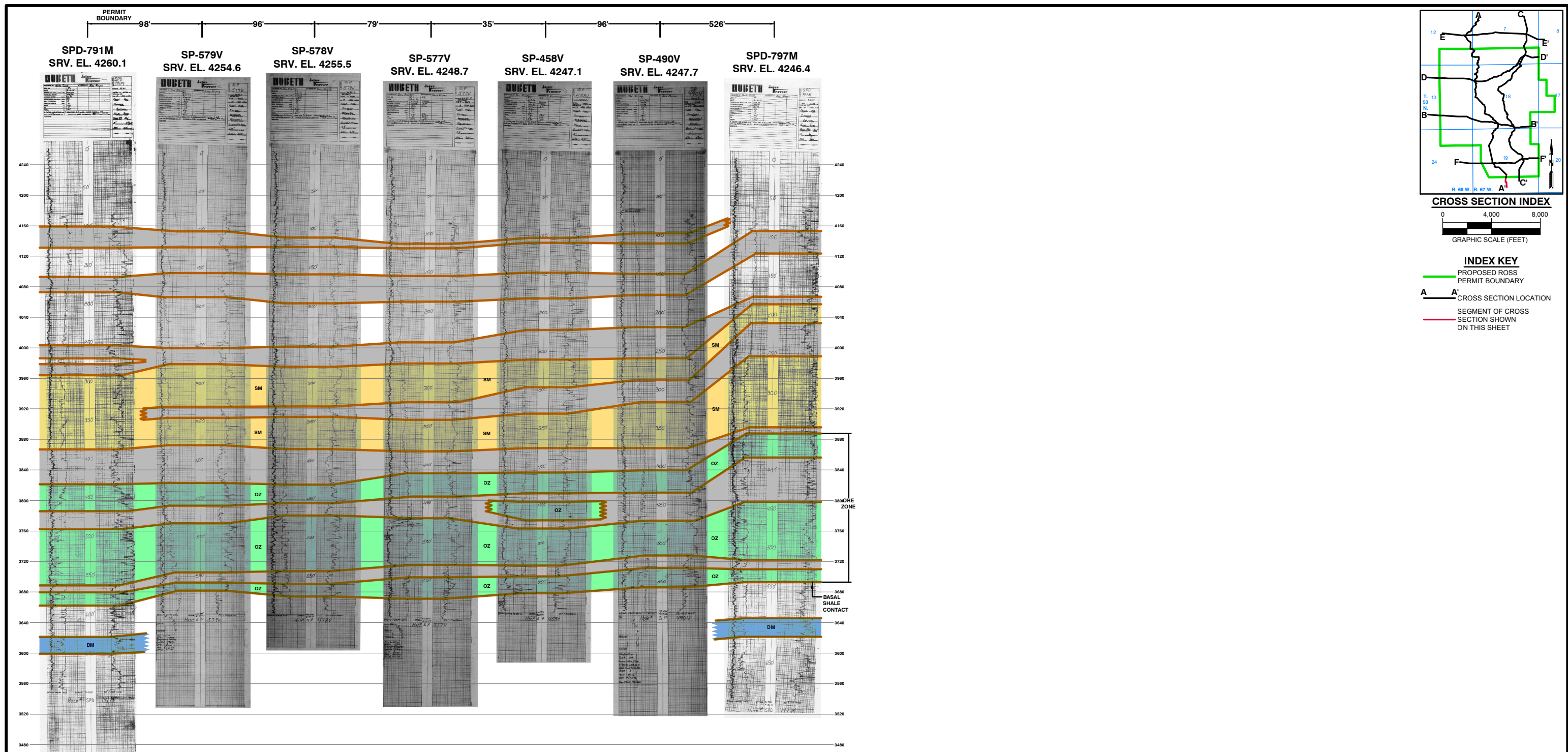
**CERTIFICATE OF GEOLOGIST**

I, Benjamin J. Schiffer, hereby certify that this drawing was prepared by myself or under my direct supervision and that it correctly represents the geologic conditions described in the accompanying application which is provided to meet the requirements of the Wyoming Environmental Quality Act and its accompanying regulations.



		<b>ROSS ISR PROJECT</b> CROOK COUNTY, WY P.O. BOX 2318 GILLETTE, WY 82716	
<b>REVISIONS</b>		<b>ADDENDUM 2.6-C</b> <b>FIGURE 12</b>	
Date	Description	<b>GEOLOGIC CROSS SECTION</b> <b>A-A'</b> <b>SEGMENT 11</b>	
		Drawn By: RAM	
		Checked By: BJS	
		Date: 10-10	
FILE: ROSS GEO XSEC AA11			





**CROSS SECTION INDEX**  
0 4,000 8,000  
GRAPHIC SCALE (FEET)

**INDEX KEY**  
PROPOSED ROSS  
PERMIT BOUNDARY  
A A' CROSS SECTION LOCATION  
SEGMENT OF CROSS  
SECTION SHOWN  
ON THIS SHEET

**NOTES:**

- HOLES DRILLED BY OR LOCATED BY STRATA ARE INDICATED BY "SRV, EL."
- STRATIGRAPHIC UNITS (i.e. LA, LB, etc.) ARE FROM TYPE LOG PRESENTED IN FIGURE 2.6-7.

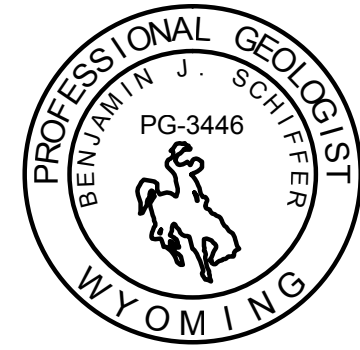
**LEGEND**



- AQUITARDS: SHALE-RICH, LOW PERMEABILITY INTERVALS.
- SA SURFICIAL AQUIFER: FLUVIAL SANDSTONE OVERLAYING MUDSTONE AND CLAYSTONE (LA, LB INTERVAL) (SHOWN WHERE PRESENT)
- SM SHALLOW MONITORING INTERVAL: SATURATED SAND INTERVAL OVERLYING AQUITARDS ABOVE THE UPPERMOST MINERALIZATION (LK, LL, LM INTERVAL)
- OZ ORE ZONE: INTERVAL CONTAINING LOWER LANCE / FOX HILLS SANDSTONE ROLL FRONTS (i.e. A,B,C,D & E WITHIN LT, LTS, FH INTERVAL)
- DM DEEP MONITORING INTERVAL: WATER BEARING UNIT (BFS INTERVAL) BENEATH BASAL SHALE CONTACT WITHIN BFH INTERVAL (SHOWN WHERE PRESENT)

SA EL SM EL OZ EL DM EL  
WATER LEVEL ELEVATIONS IN RESPECTIVE AQUIFER FROM JULY 2010 WATER LEVEL SURVEY (SHOWN WHERE PRESENT)

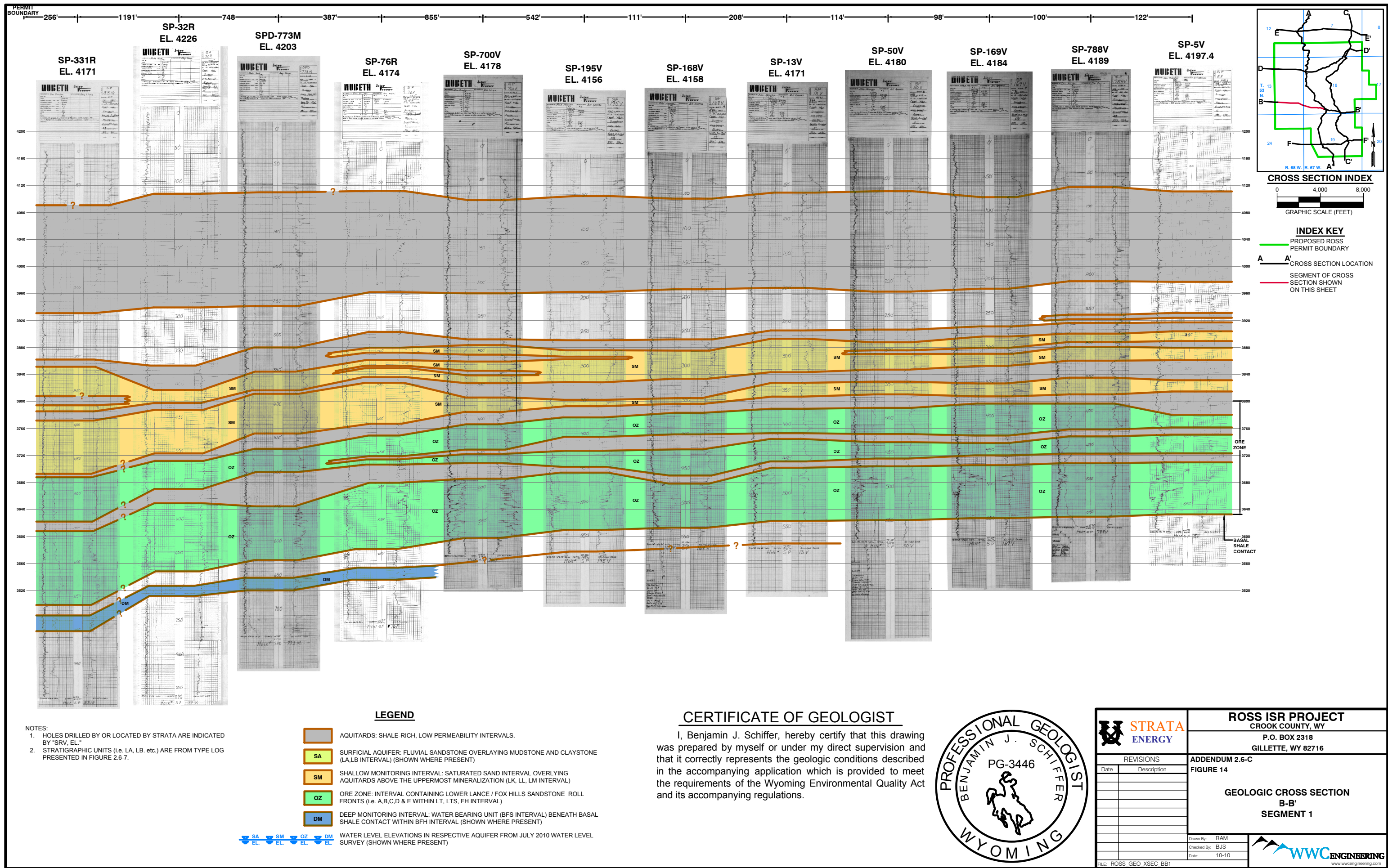
**CERTIFICATE OF GEOLOGIST**

I, Benjamin J. Schiffer, hereby certify that this drawing was prepared by myself or under my direct supervision and that it correctly represents the geologic conditions described in the accompanying application which is provided to meet the requirements of the Wyoming Environmental Quality Act and its accompanying regulations.

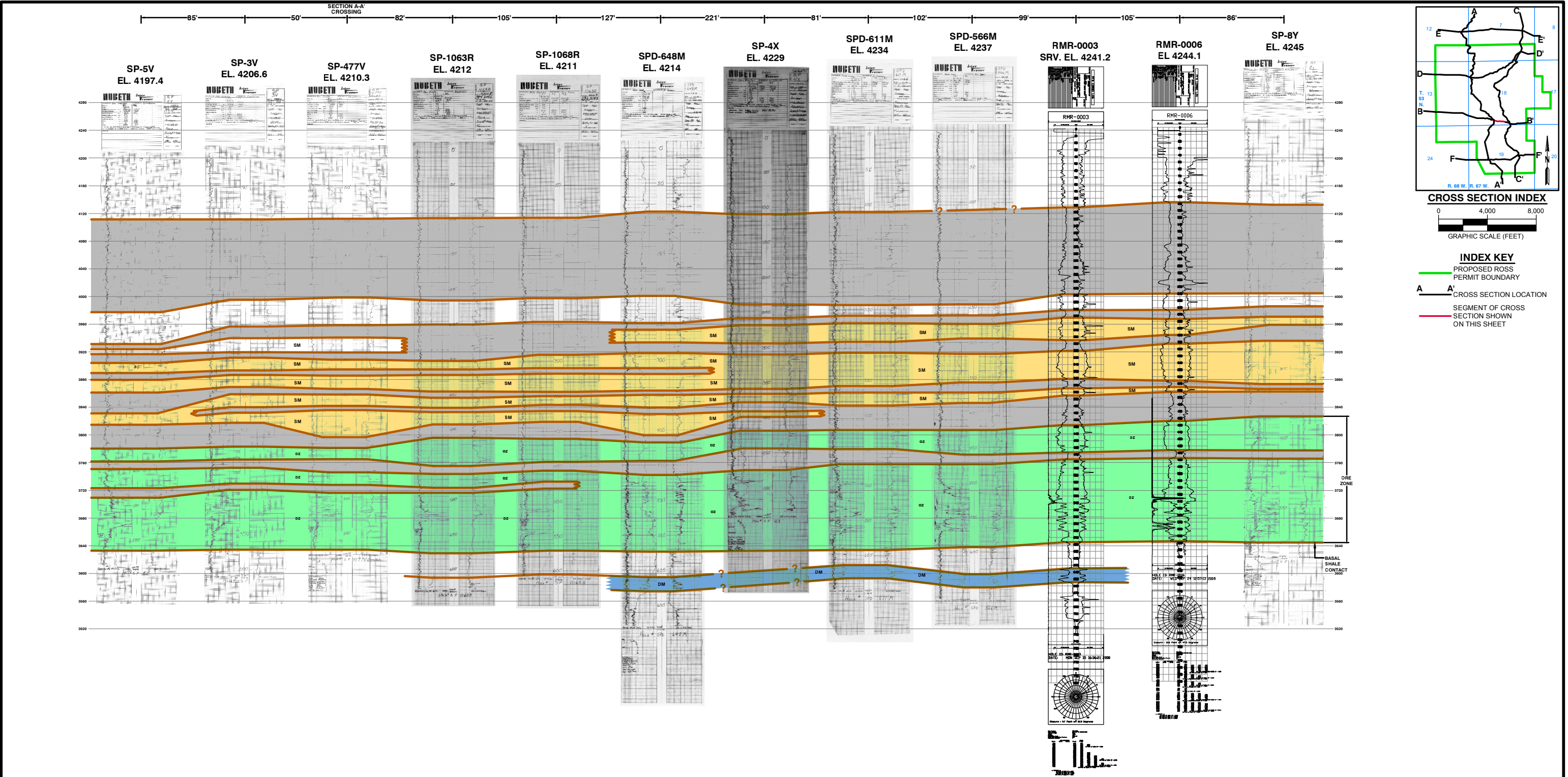


		<b>ROSS ISR PROJECT</b> CROOK COUNTY, WY P.O. BOX 2318 GILLETTE, WY 82716	
<b>REVISIONS</b>		<b>ADDENDUM 2.6-C</b>	
Date	Description	<b>FIGURE 13</b>	
		<b>GEOLOGIC CROSS SECTION</b> <b>A-A'</b> <b>SEGMENT 12</b>	
		Drawn By: RAM	
		Checked By: BJS	
		Date: 10-10	
FILE: ROSS GEO XSEC AA12			









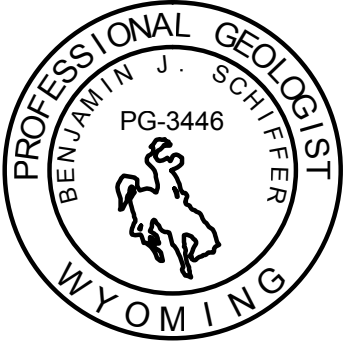
NOTES:  
1. HOLES DRILLED BY OR LOCATED BY STRATA ARE INDICATED BY "SRV, EL."  
2. STRATIGRAPHIC UNITS (i.e. LA, LB, etc.) ARE FROM TYPE LOG PRESENTED IN FIGURE 2.6-7.

**LEGEND**

- AQUITARDS: SHALE-RICH, LOW PERMEABILITY INTERVALS.
  - SA SURFICIAL AQUIFER: FLUVIAL SANDSTONE OVERLAYING MUDSTONE AND CLAYSTONE (LA, LB INTERVAL) (SHOWN WHERE PRESENT)
  - SM SHALLOW MONITORING INTERVAL: SATURATED SAND INTERVAL OVERLYING AQUITARDS ABOVE THE UPPERMOST MINERALIZATION (LK, LL, LM INTERVAL)
  - OZ ORE ZONE: INTERVAL CONTAINING LOWER LANCE / FOX HILLS SANDSTONE ROLL FRONTS (i.e. A,B,C,D & E WITHIN LT, LTS, FH INTERVAL)
  - DM DEEP MONITORING INTERVAL: WATER BEARING UNIT (BFS INTERVAL) BENEATH BASAL SHALE CONTACT WITHIN BFH INTERVAL (SHOWN WHERE PRESENT)
- SA EL. SM EL. OZ EL. DM EL. WATER LEVEL ELEVATIONS IN RESPECTIVE AQUIFER FROM JULY 2010 WATER LEVEL SURVEY (SHOWN WHERE PRESENT)

**CERTIFICATE OF GEOLOGIST**

I, Benjamin J. Schiffer, hereby certify that this drawing was prepared by myself or under my direct supervision and that it correctly represents the geologic conditions described in the accompanying application which is provided to meet the requirements of the Wyoming Environmental Quality Act and its accompanying regulations.



		<b>ROSS ISR PROJECT</b> CROOK COUNTY, WY P.O. BOX 2318 GILLETTE, WY 82716	
<b>REVISIONS</b>		<b>ADDENDUM 2.6-C</b> <b>FIGURE 15</b>	
Date	Description	<b>GEOLOGIC CROSS SECTION</b> <b>B-B'</b> <b>SEGMENT 2</b>	
		Drawn By: RAM	
		Checked By: BJS	
		Date: 10-10	
FILE: ROSS GEO XSEC BB2			



