

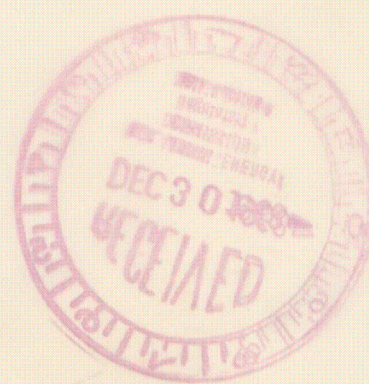
386  
336  
168  
2

243  
216  
27  
910  
243  
3216

8110230513-03

F.S = 34 KNOTS  
RADIUS TO WIND = 24 MILE (NAUT)  
CP = 27.26 "Hg.

▲ HURRICANE ISOTHERM  
• FOR LINE PASSING 1/2 R.  
FROM THE HURRICANE EYE



EXTRA 50 SOFT  
50 100 150 200  
SOFT  
HARD

20  
150  
↓

50 SOFT  
2

30	35
5	15
150	175
	15
	100
	10
	175

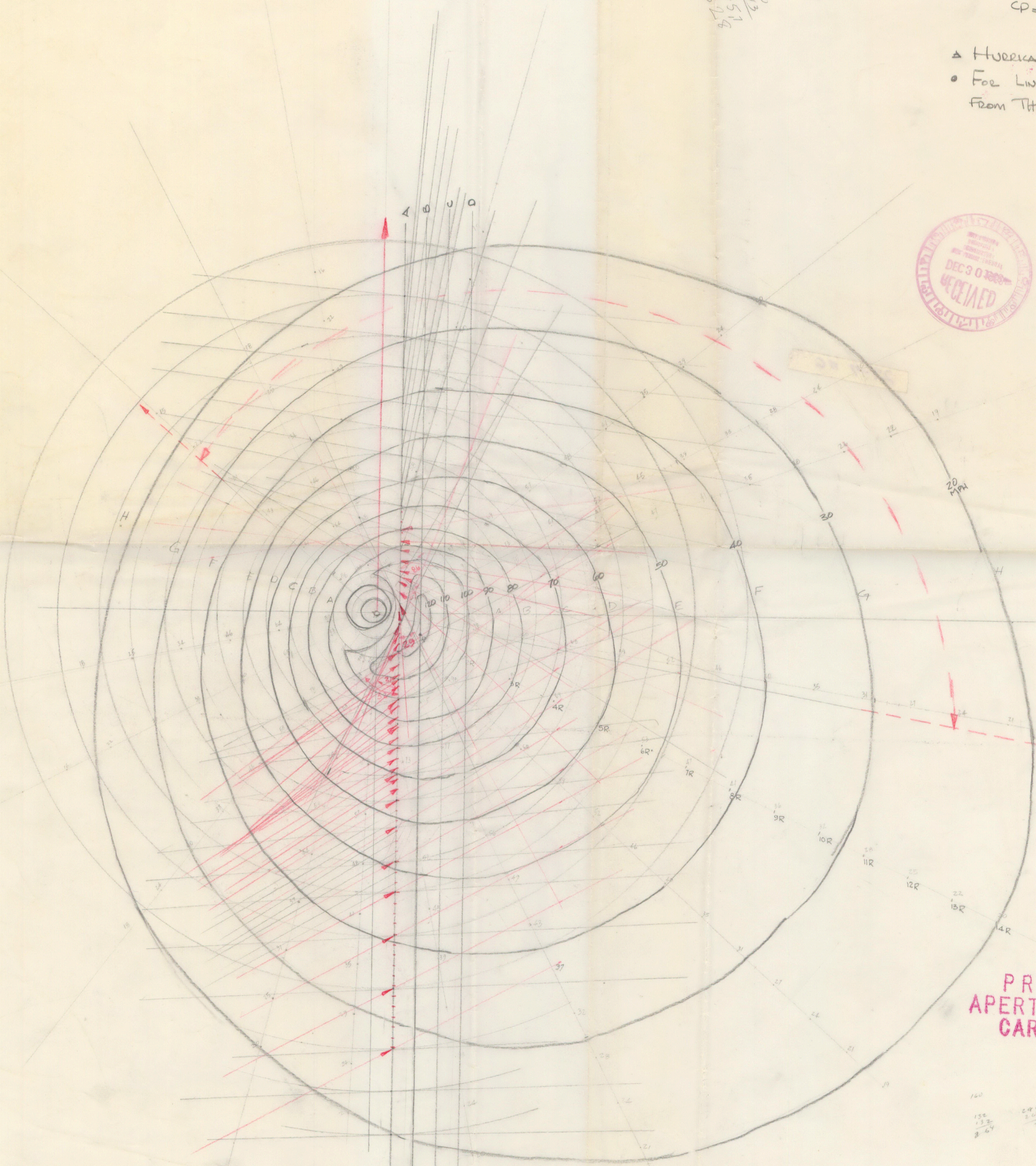
PRC  
APERTURE  
CARD

378  
264  
100  
320  
278  
204  
420

150  
132  
264  
290  
204  
26

1" = 30 MILE  
APERTURE CARD

8110230513-03 391





$CB = 54.56 \text{ " Ho.}$   
 $\text{Radius to Wind} = 54 \text{ W/m (W/m)} \quad F.2 = 54 \text{ Knots}$

- From the Hurricane Eye
- For Line Passing 15R
- Hurricane 10WET



29-7 #6

APERTURE  
CARD  
PROC

8110230213-03