

# CIMARRON CORPORATION

P. O. BOX 25861 • OKLAHOMA CITY, OKLAHOMA 73125

S. JESS LARSEN  
VICE PRESIDENT

January 23, 1996

Mr. Michael F. Weber, Chief  
Low-Level Waste Management and  
Decommissioning Projects Branch  
Division of Waste Management  
Office of Nuclear Material Safety and Safeguards  
U.S. Nuclear Regulatory Commission  
Washington, D.C. 20555-0001

**Ref: Cimarron Corporation  
Docket No. 79-0925, License No. SNM-928  
License Amendment Request**

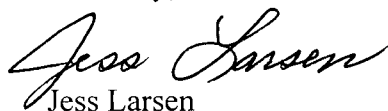
Dear Mr. Weber:

Effective on January 1, 1996, Mr. George B. Rice retired from Kerr-McGee Corporation and its wholly owned subsidiary, Cimarron Corporation. Mr. Rice has been replaced by Mr. George D. Christiansen and some organizational changes have also been implemented.

Mr. Christiansen will now assume the position of Vice President Assessment and Remediation for Cimarron Corporation. Pertinent organization charts for both Kerr-McGee Corporation and Cimarron Corporation are attached. A resumé specifying Mr. Christiansen's qualifications is also attached.

Cimarron Corporation requests prompt NRC approval of this License Amendment so we may meet our license obligations.

Sincerely,



Jess Larsen  
Vice President

## Attachments

cc: Charles Cain - U.S.N.R.C. (Region IV)  
Joe Kegin

jl012396.le1

9602080194 960123  
PDR ADDCK 07000925  
C PDR

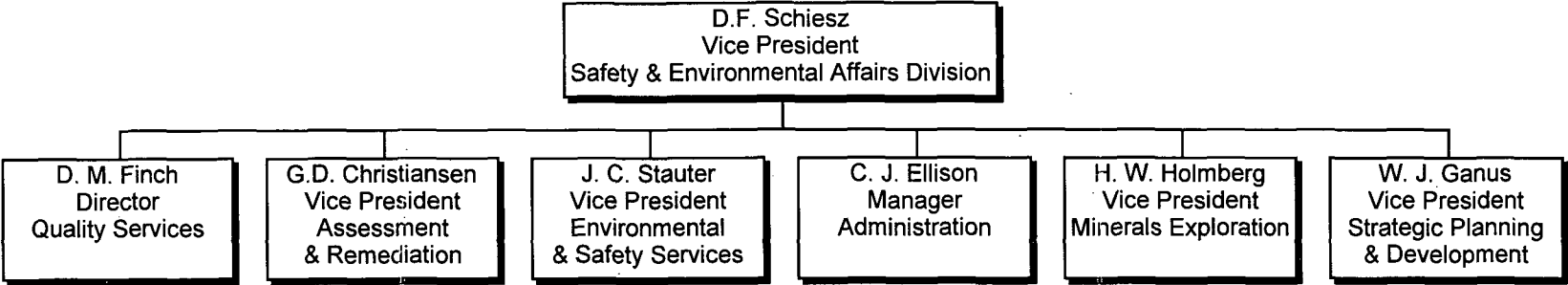
A SUBSIDIARY OF KERR-MCGEE CORPORATION

70-0925

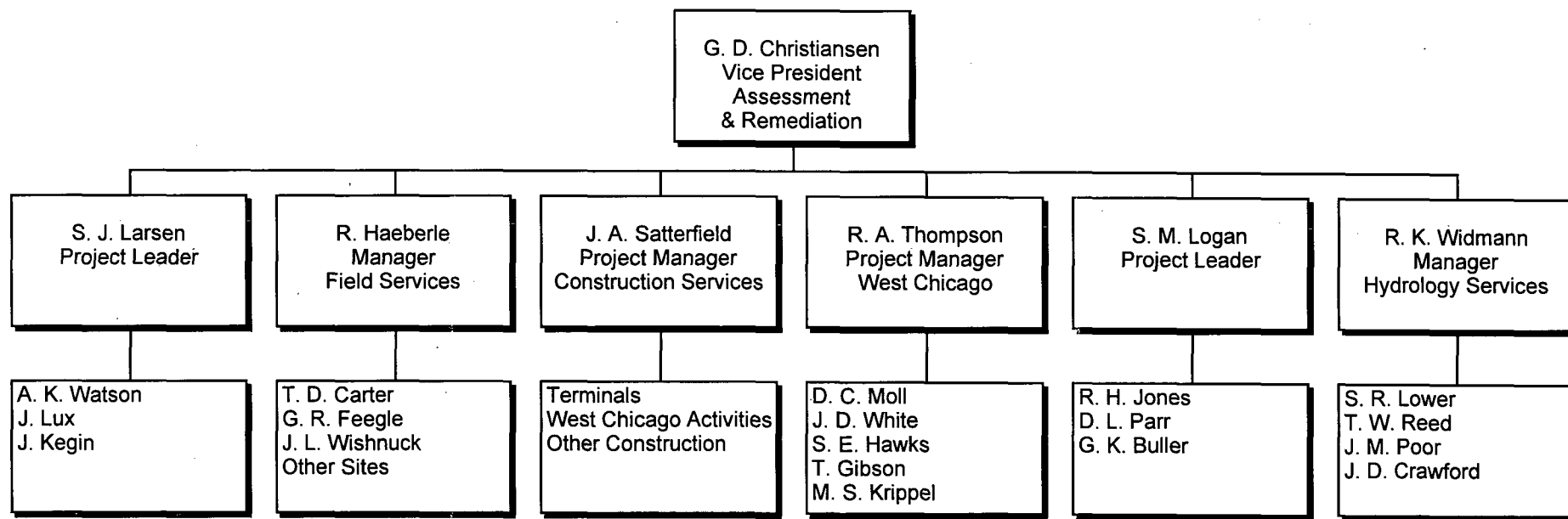
① Tim  
② Dave

Ticket. Looker  
straight forward.  
Get this amendment  
out in 30 days. 4 wks.  
effort  
1/14 W.  
2/2 1996

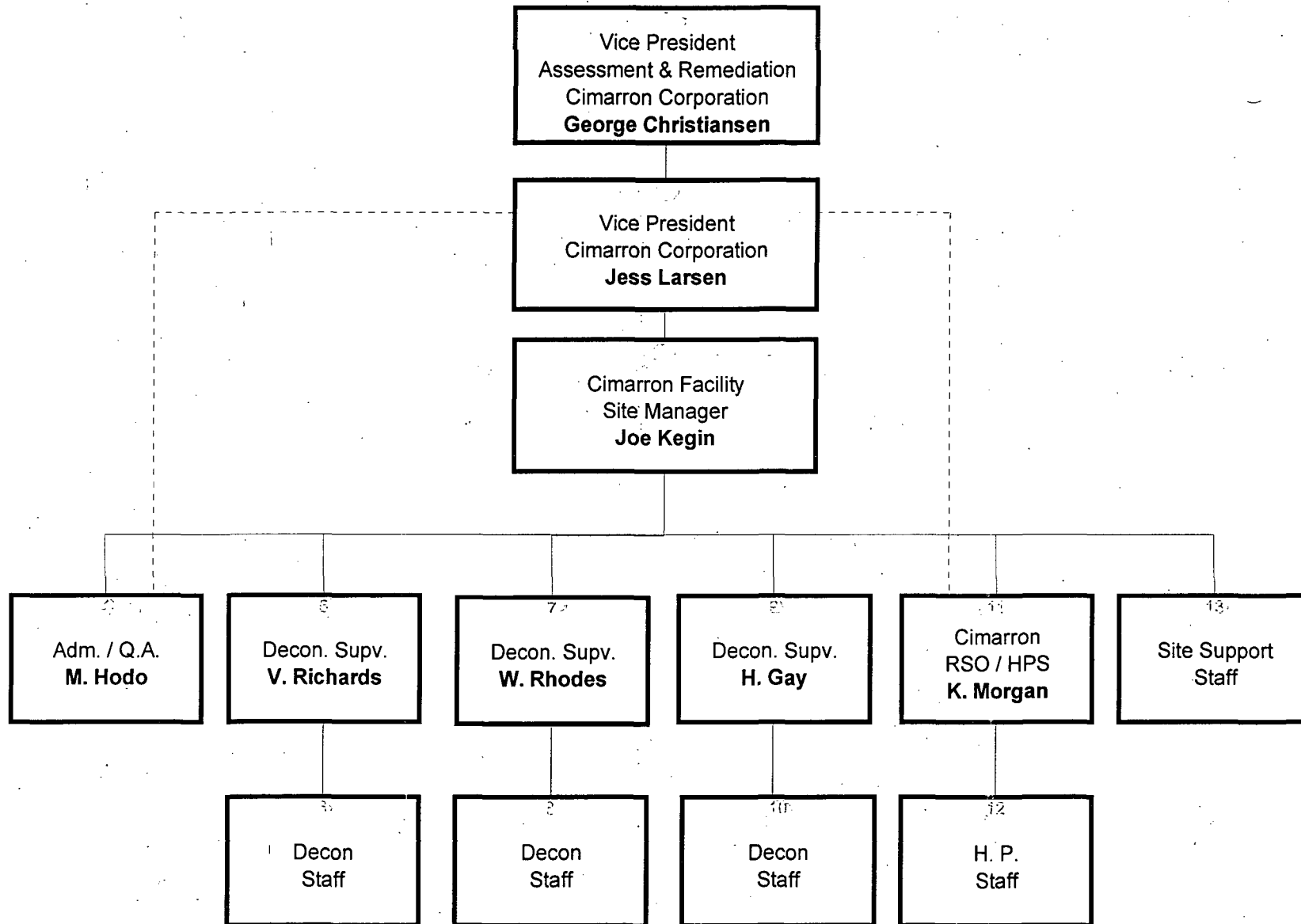
Kerr-McGee Corporation  
Safety & Environmental Affairs Division



Kerr-McGee Corporation  
Safety & Environmental Affairs Division  
Assessment & Remediation



# Cimarron Corporation Organization Chart



**GEORGE D. CHRISTIANSEN**

**Kerr-McGee Corporation  
Safety and Environmental Affairs Division**

**Education:** B.S. Geology, University of Wyoming, Laramie, Wyoming (1968)

**Current Position:** Vice President - Assessment and Remediation, Safety & Environmental Affairs Division

**Experience:** 1968 to Present: Kerr-McGee Corporation

- 1994 through 1995: Minerals Exploration, Environmental Assessment (Hydrology) & Real Estate Management
- 1980 to 1994: Minerals Exploration Management
- 1974 to 1980: Uranium Exploration Management
- 1970 to 1974: Uranium and Coal Exploration Geology
- 1968 to 1970: Uranium Mine Geology

January 3, 1996