

Photos of the New Vault 2 Design Construction

Nishka Devaser

June 29, 2009

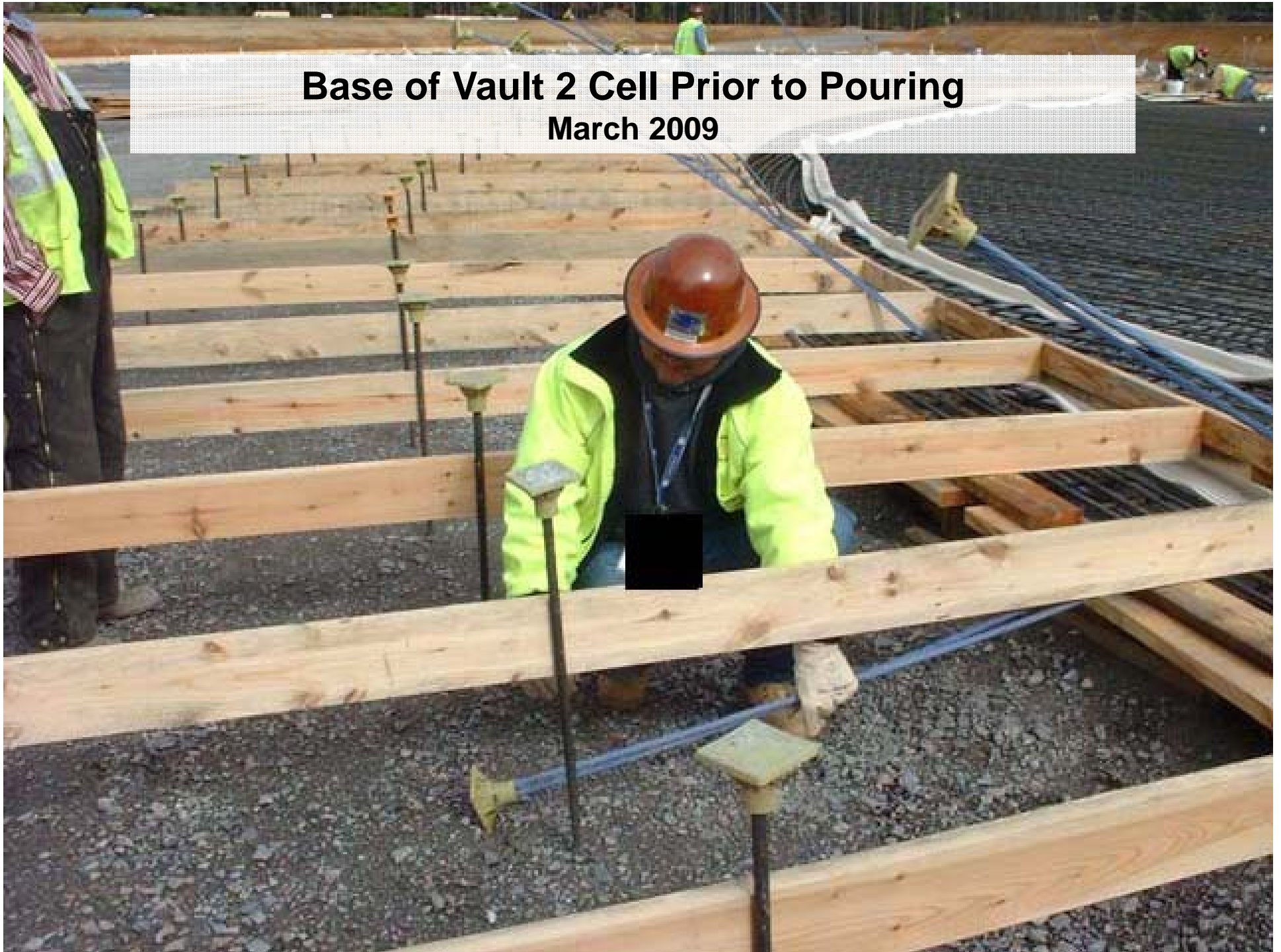
March 2009

Standing on Tank Floor Near Interior Columns

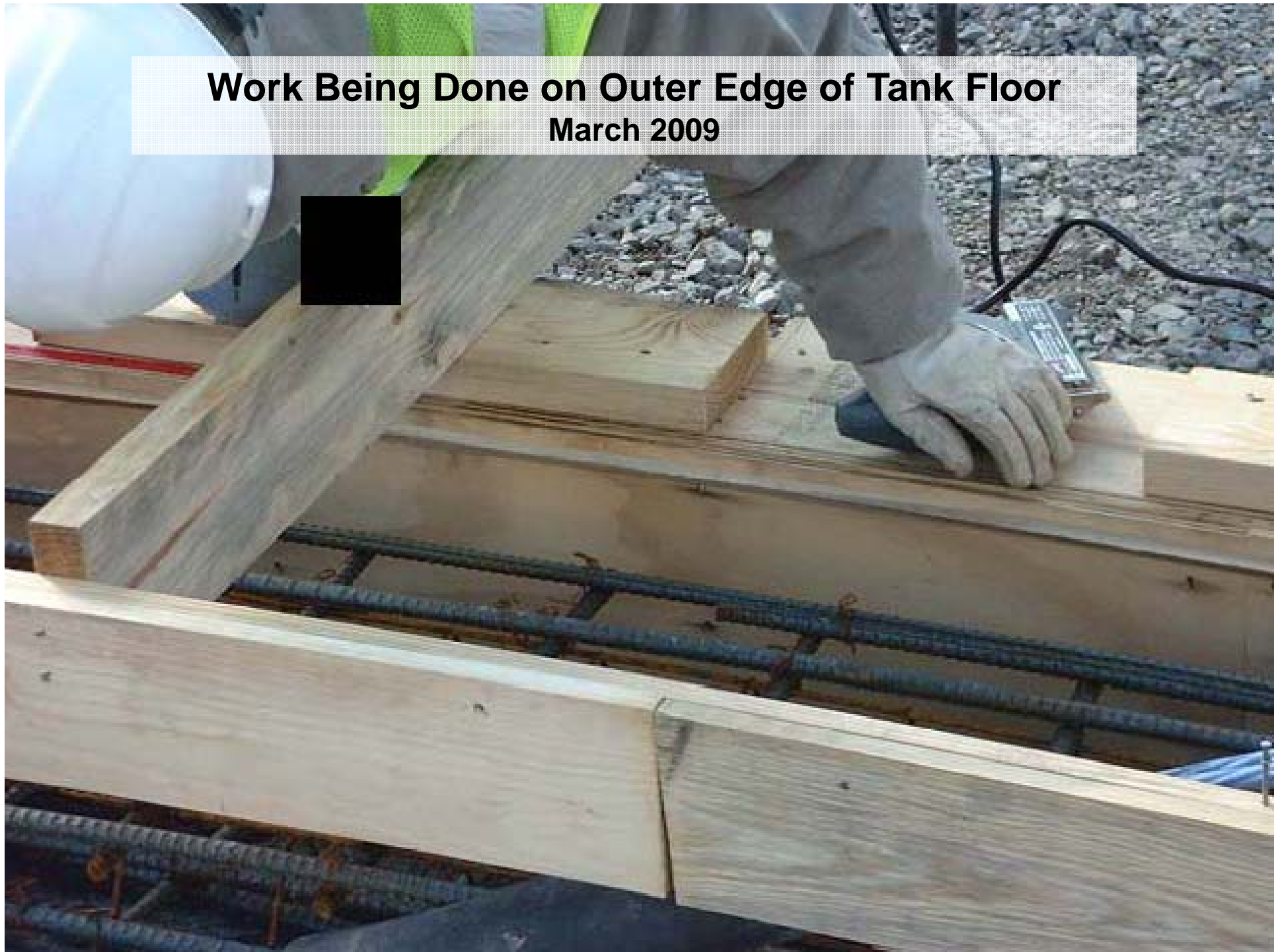
March 2009



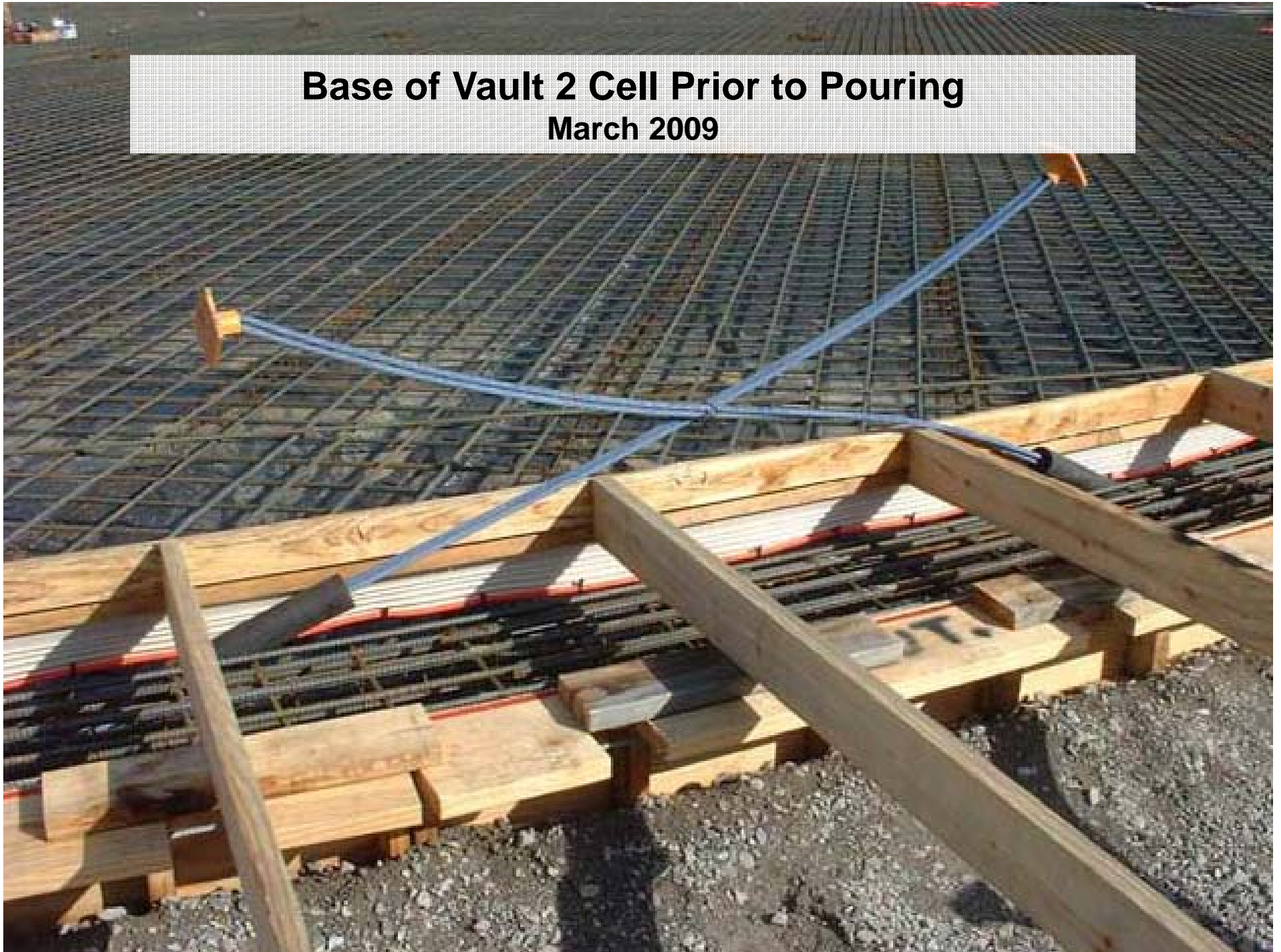
Base of Vault 2 Cell Prior to Pouring
March 2009



Work Being Done on Outer Edge of Tank Floor
March 2009



Base of Vault 2 Cell Prior to Pouring
March 2009



Base Floor Forms Prior to Pouring

March 2009

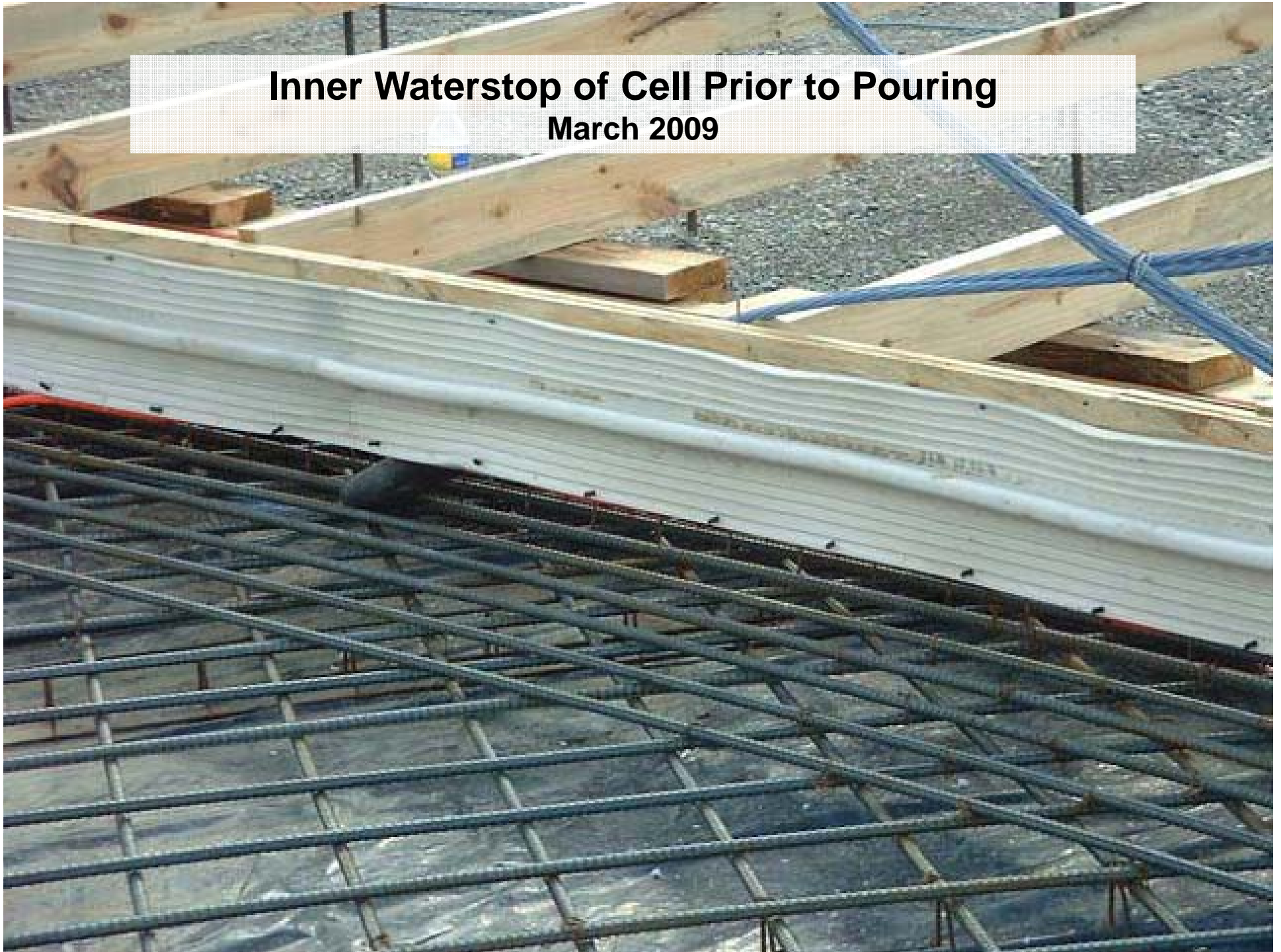


Inner PVC Waterstop on Outer Rim of Tank Floor

March 2009



Inner Waterstop of Cell Prior to Pouring
March 2009



Pouring Base of Cell 2B

March 2009



Pouring Base of Cell 2B

March 2009



Pouring Base of Cell 2B

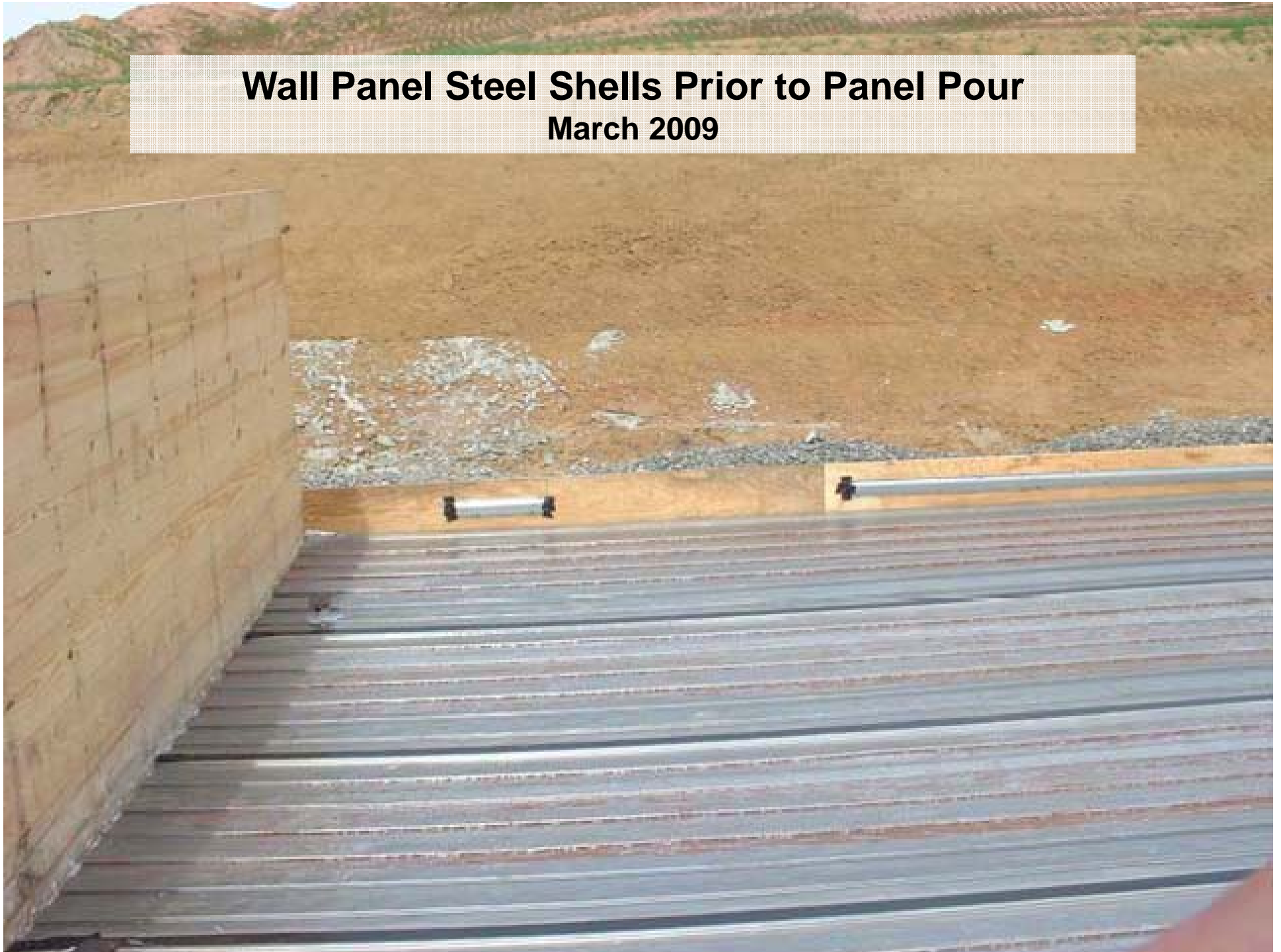
March 2009



Wall Panel Steel Shells Prior to Panel Pour
March 2009



Wall Panel Steel Shells Prior to Panel Pour
March 2009



Wall Panel Rebar Prior to Pour

March 2009



Wall Panel Rebar Prior to Pour

March 2009



April 2009

During Column Scaffold Installation of Cell 2B

April 2009

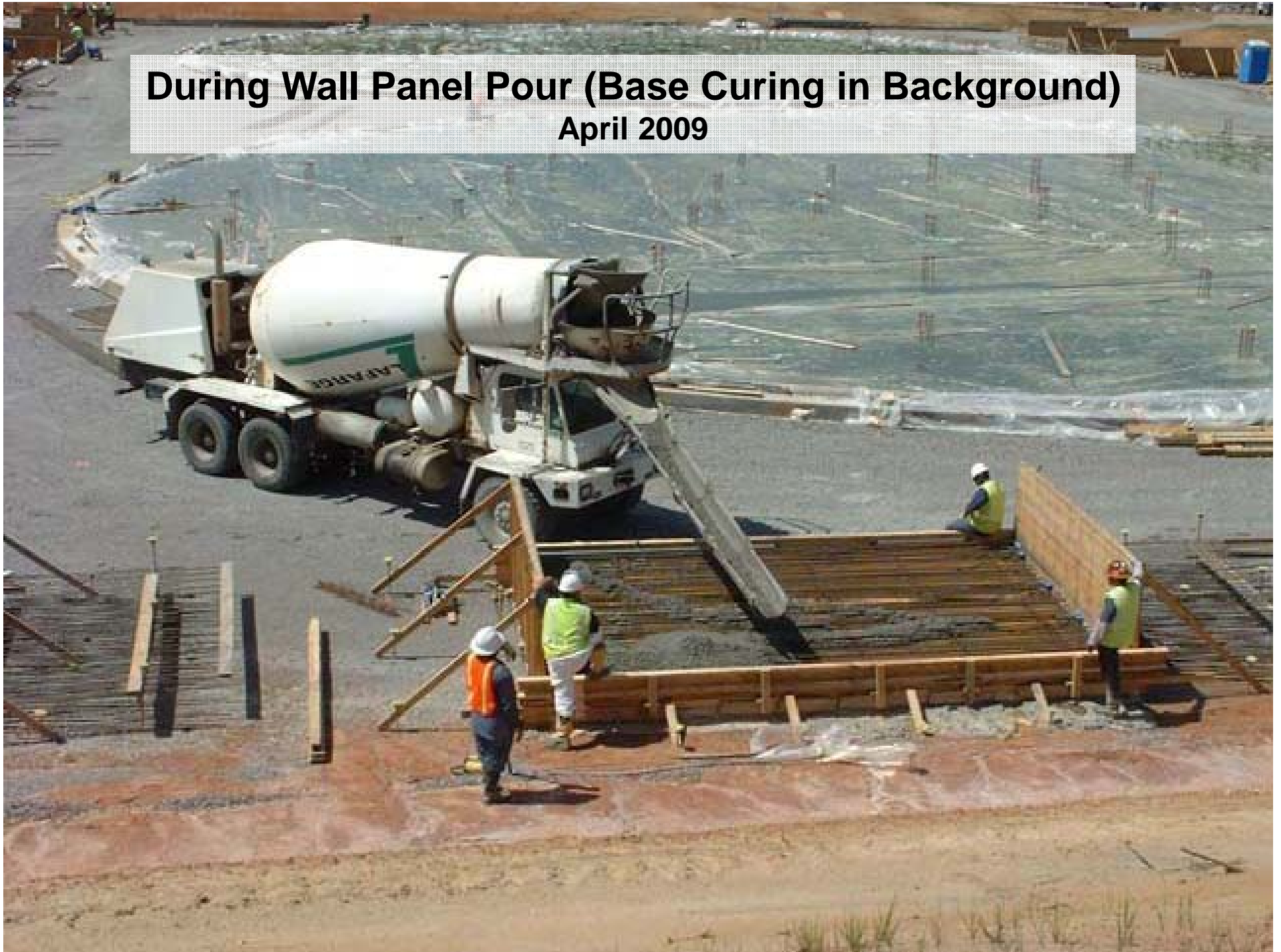


Global View During Wall Panel Form Curing

April 2009



During Wall Panel Pour (Base Curing in Background)
April 2009



Pouring Pre-Cast Wall Panels

April 2009



Pouring Pre-Cast Wall Panels

April 2009



Wall Panel Pour

April 2009



Wall Panel Pour

April 2009



Wall Panel Pour

April 2009



Wall Panel Pour

April 2009



Wall Panel Pour

April 2009



Pouring Pre-Cast Wall Panels

April 2009



Wall Panel Pour

April 2009



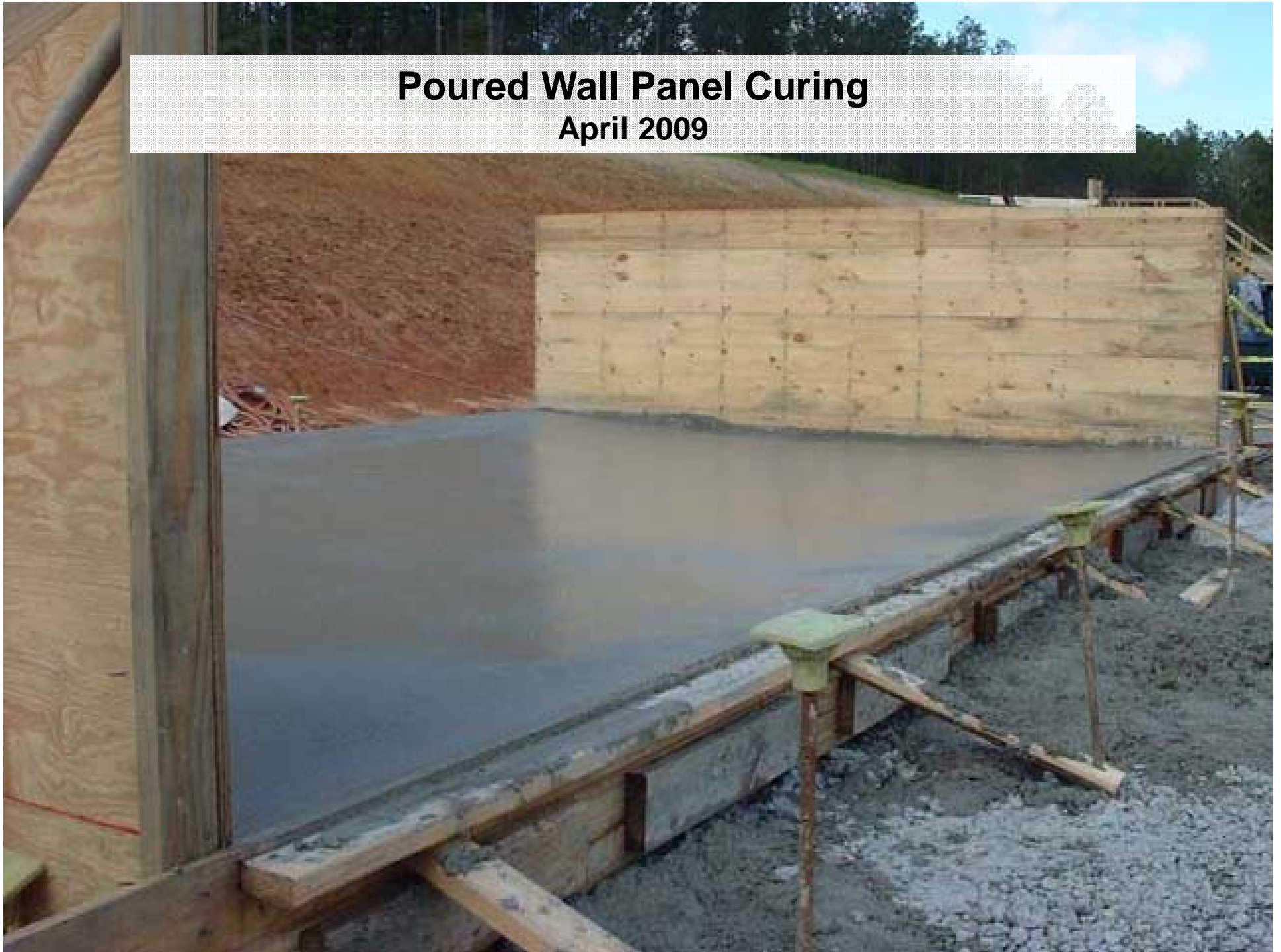
Pouring Pre-Cast Wall Panels

April 2009



Poured Wall Panel Curing

April 2009



May 2009

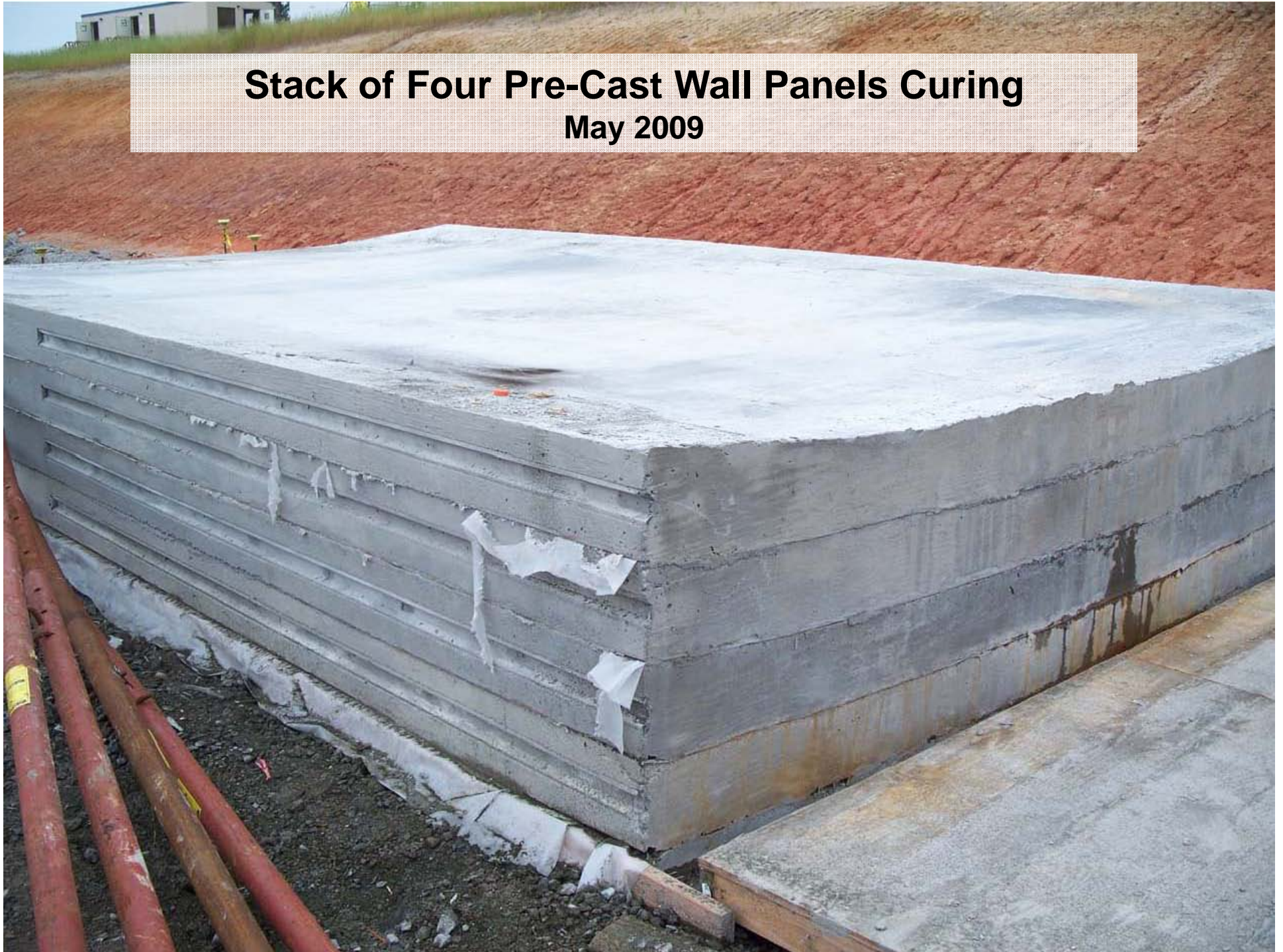
Sides of Curing Pre-Cast Wall Panels Showing Rebar
May 2009



Wall Panel Steel Shells Prior to Panel Pour
May 2009



Stack of Four Pre-Cast Wall Panels Curing
May 2009



Installation of Pre-Cast Wall Panels on Cell 2A

May 2009



Installation of Pre-Cast Wall Panels on Cell 2A

May 2009



Pre-Cast Wall Panel on Neoprene Bearing Pad
May 2009



Pre-Cast Wall Panel on Neoprene Bearing Pad
May 2009



During Wall Panel Installation of Cell 2A

May 2009

Note panel
being lifted



Installation of Pre-Cast Wall Panels on Cell 2A

May 2009



During Column Scaffold Installation of Cell 2B

May 2009



June Onsite Observation

June 3, 2009

Cell 2B with Wall Panels and Closure Strips Installed

June 3, 2009



Cell 2B with Wall Panels and Closure Strips Installed

June 3, 2009



Cell 2A Prior to Installation of Closure Strips

June 3, 2009

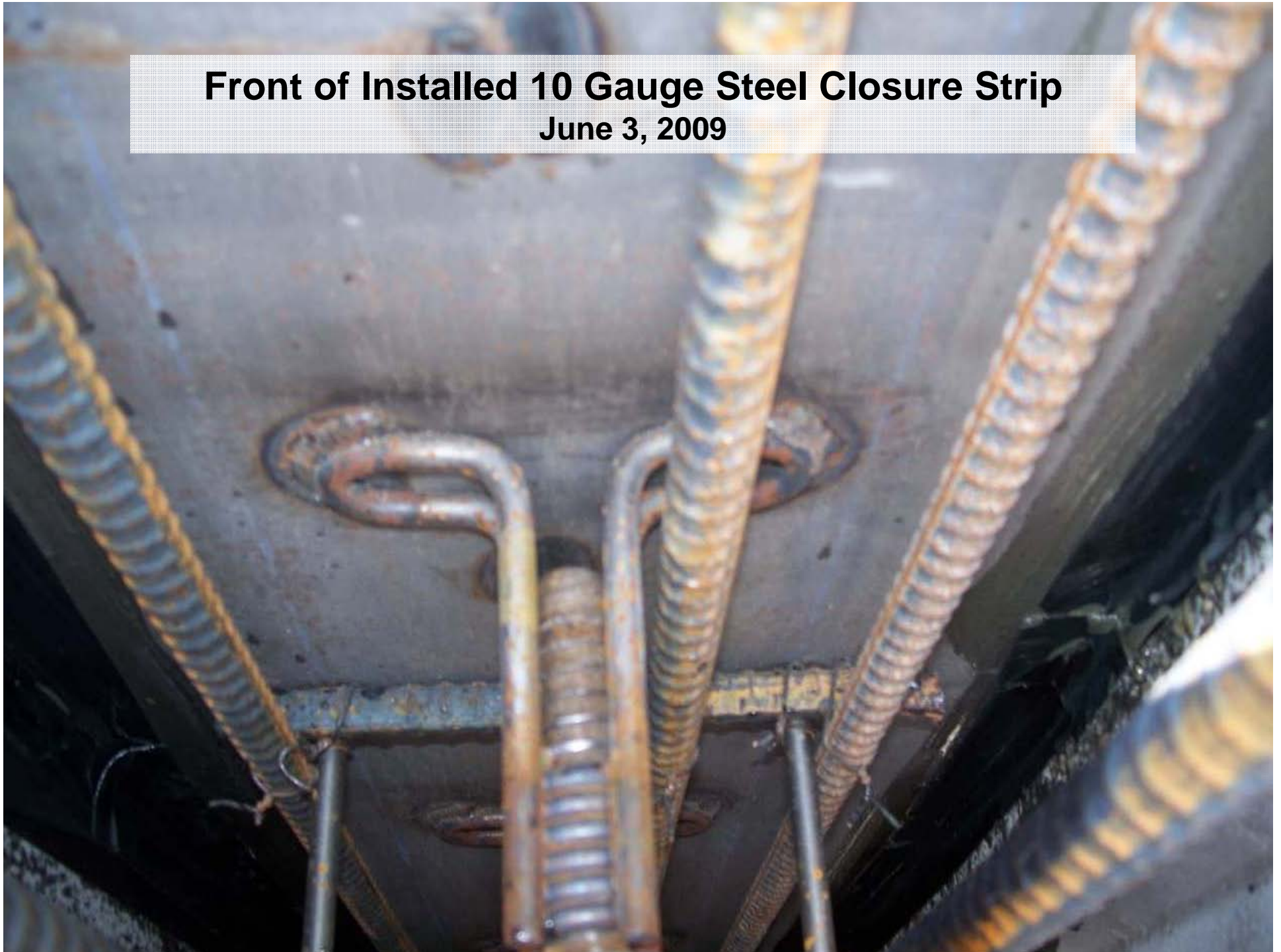


Cell 2A Prior to Installation of Closure Strips

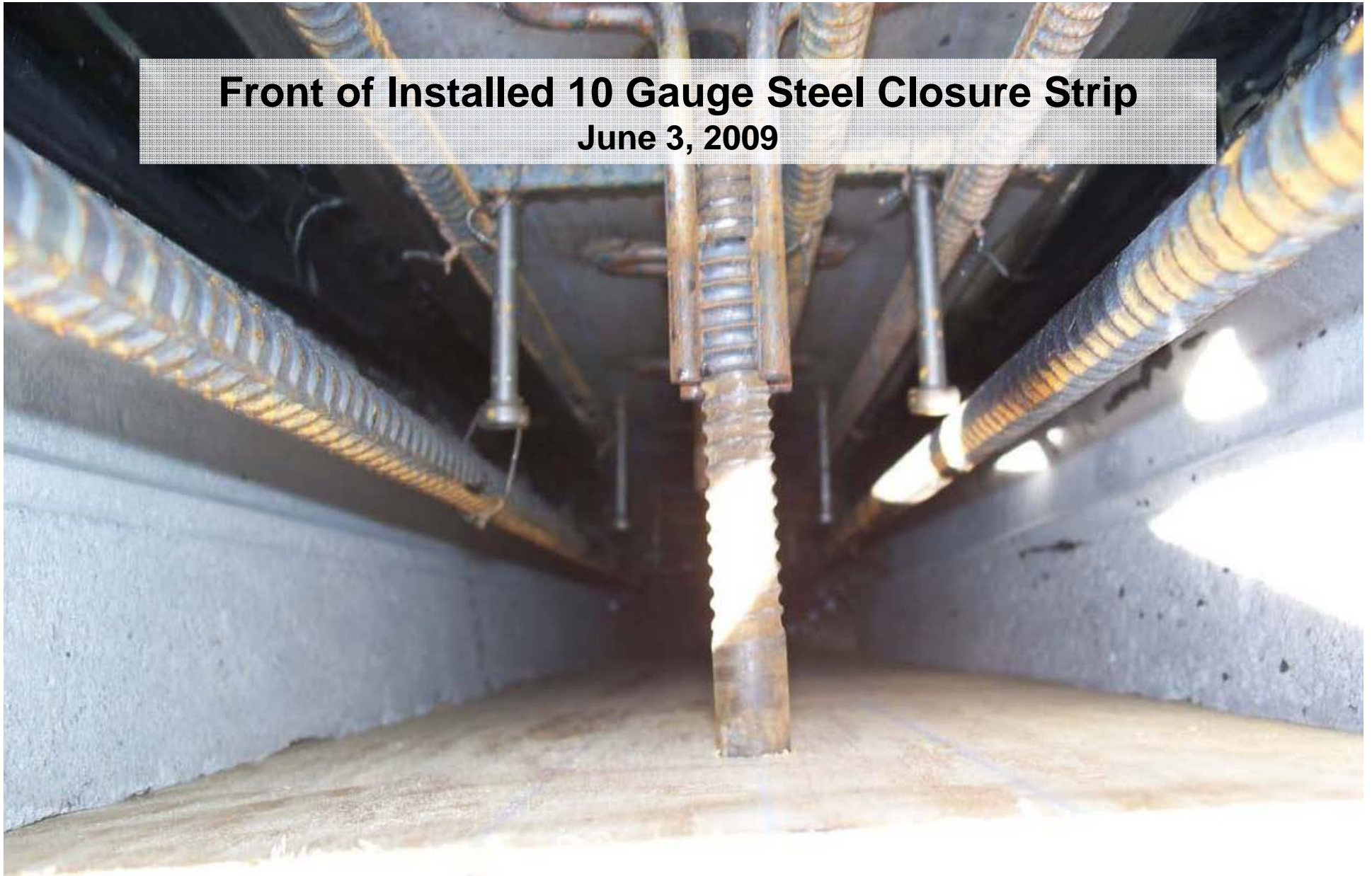
June 3, 2009



Front of Installed 10 Gauge Steel Closure Strip
June 3, 2009

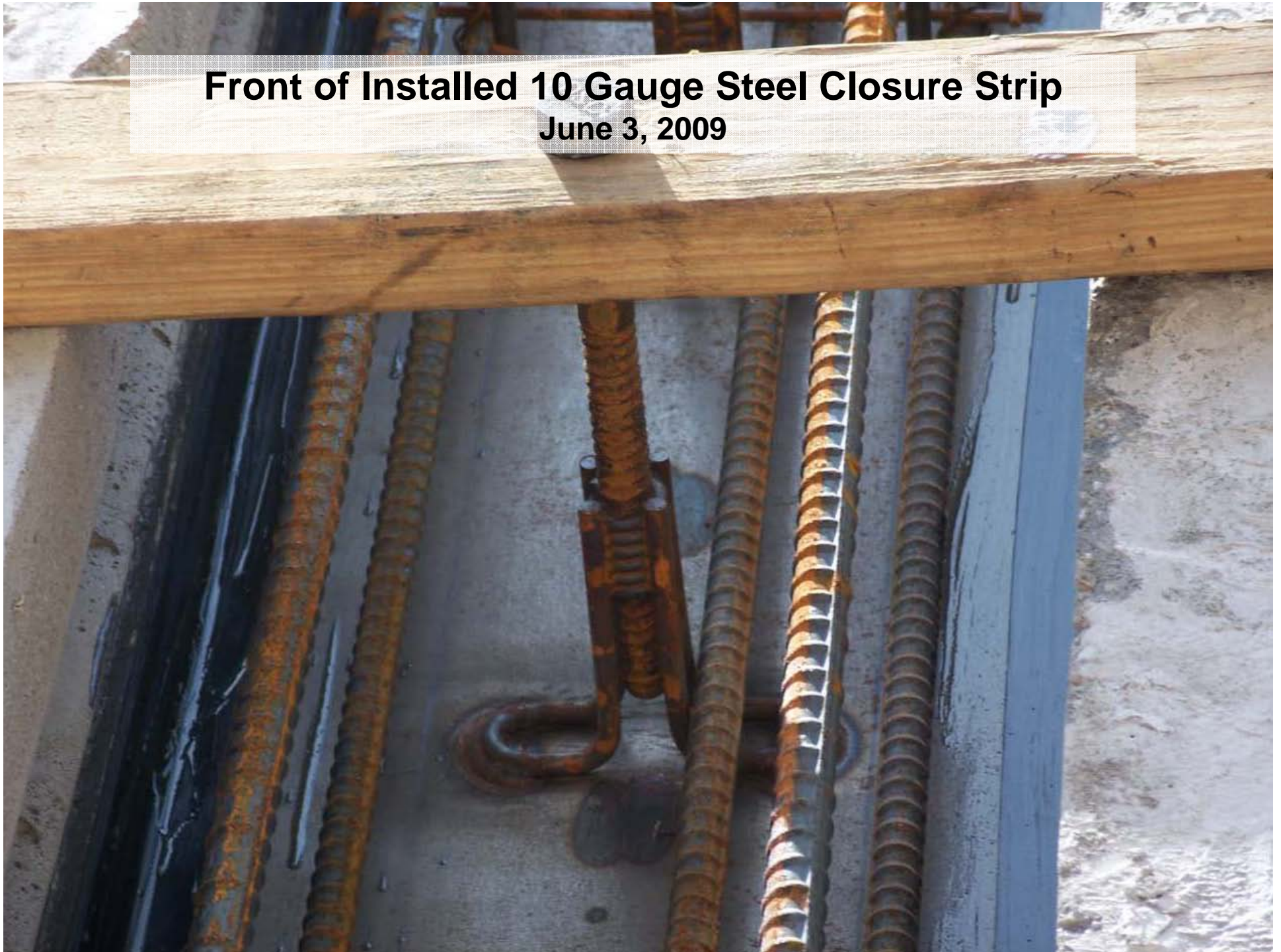


Front of Installed 10 Gauge Steel Closure Strip
June 3, 2009



Front of Installed 10 Gauge Steel Closure Strip

June 3, 2009



Fasteners on Front of Uninstalled Steel Closure Strip

June 3, 2009



Gatorade intended to show perspective

Fasteners on Front of Uninstalled Steel Closure Strip

June 3, 2009



Fasteners on Front of Uninstalled Steel Closure Strip
June 3, 2009

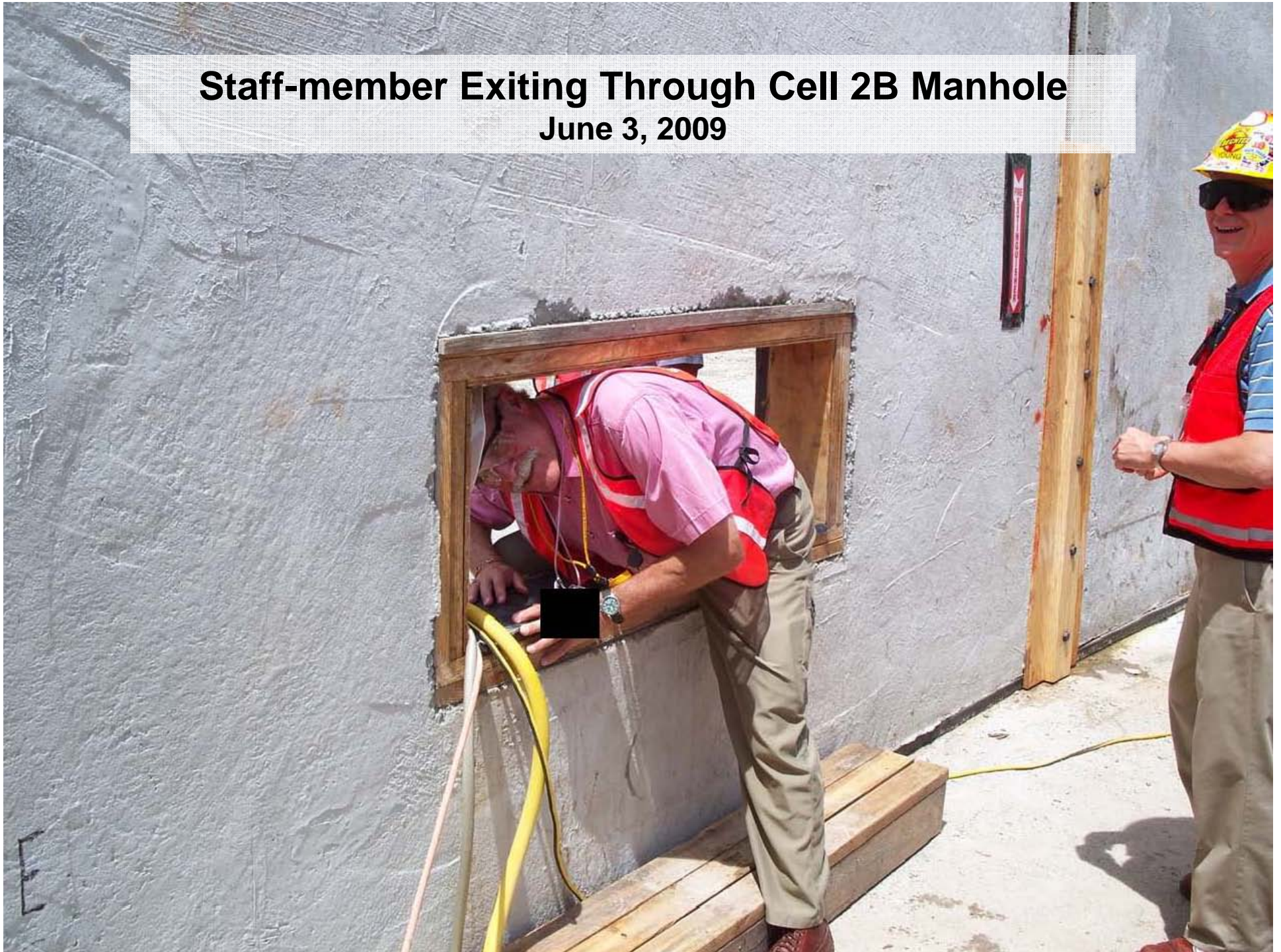


Inside of Cell 2B During June Onsite Observation
June 3, 2009



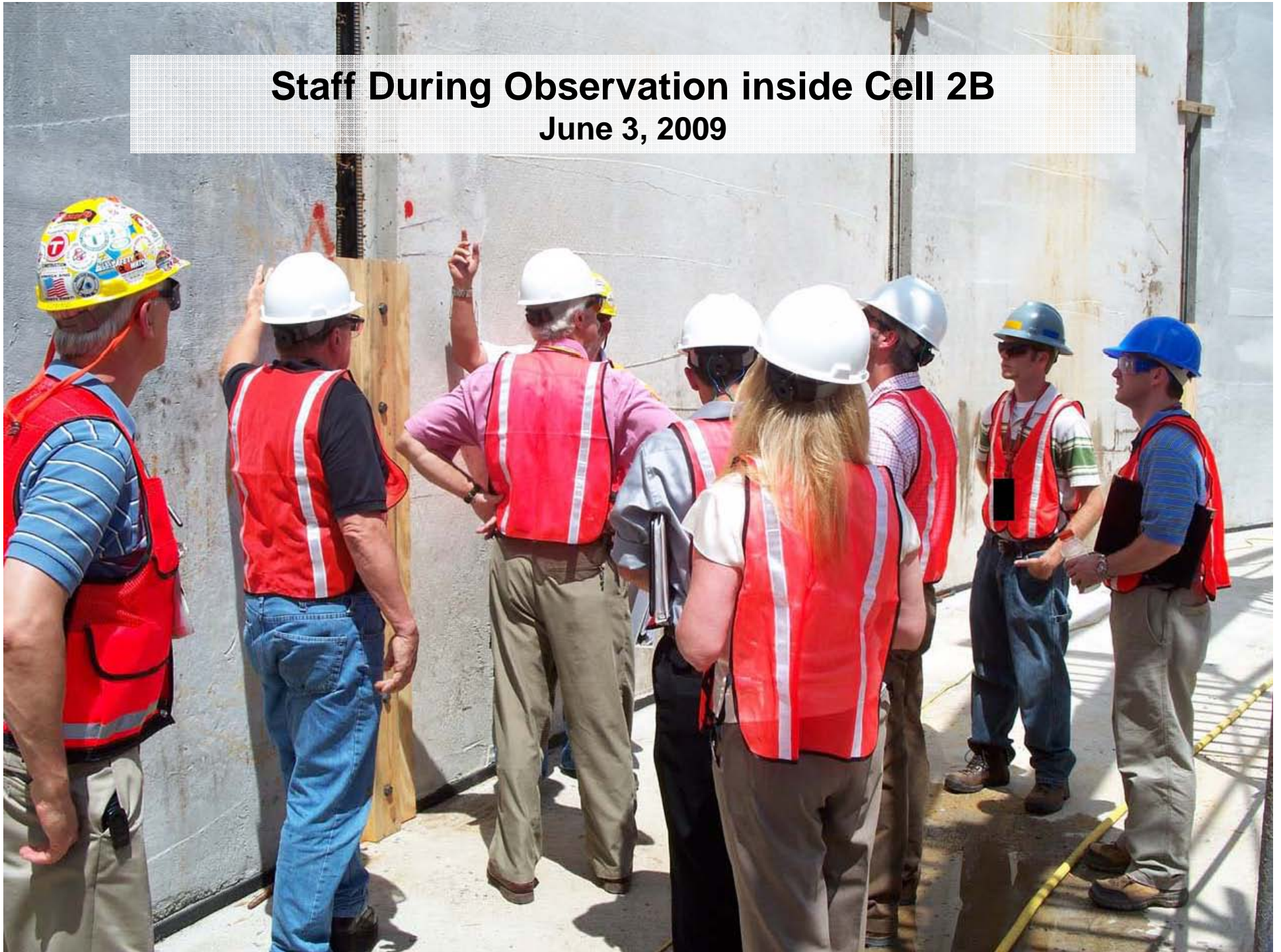
Staff-member Exiting Through Cell 2B Manhole

June 3, 2009



Staff During Observation inside Cell 2B

June 3, 2009



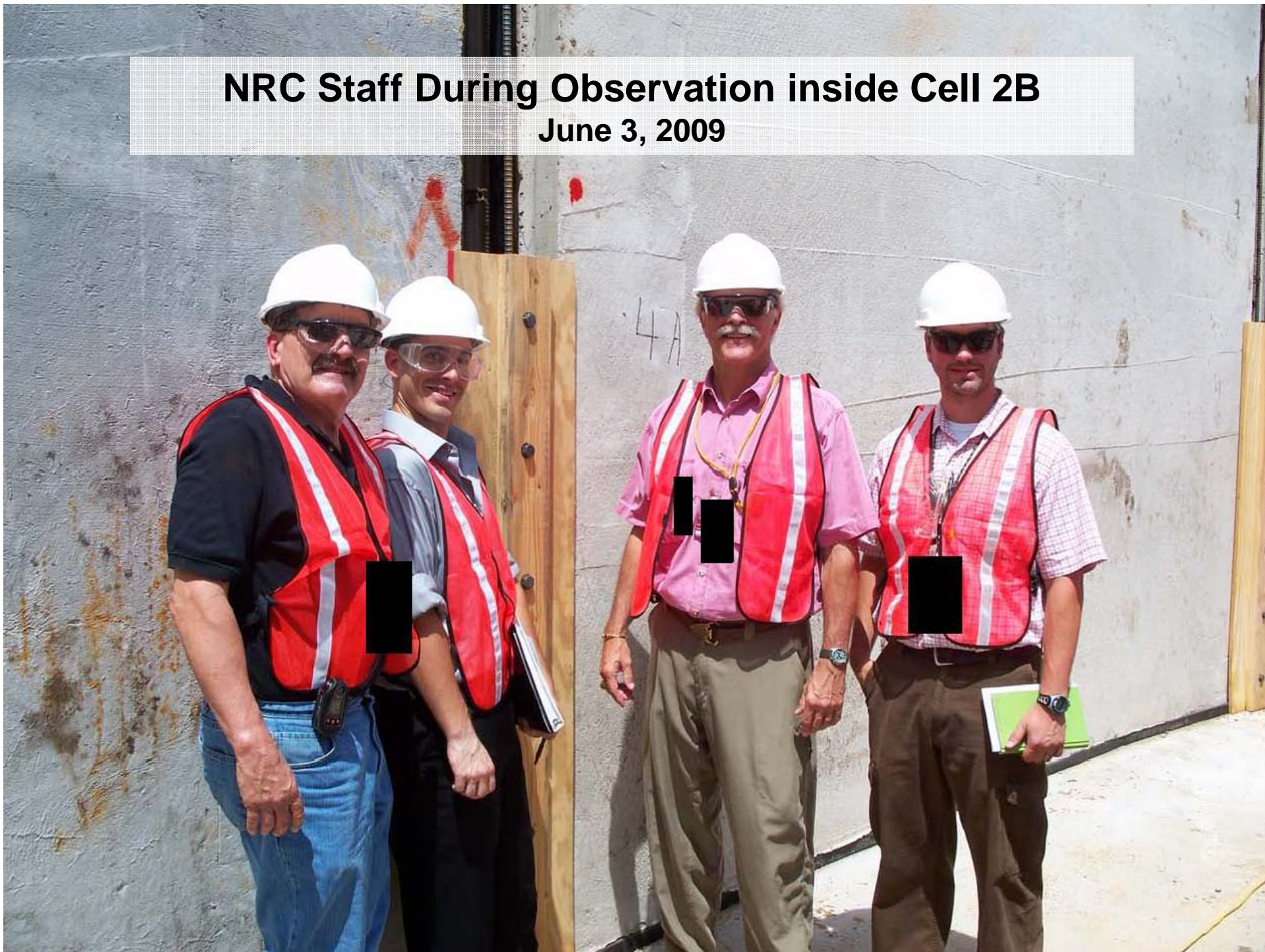
Staff During Observation inside Cell 2B

June 3, 2009

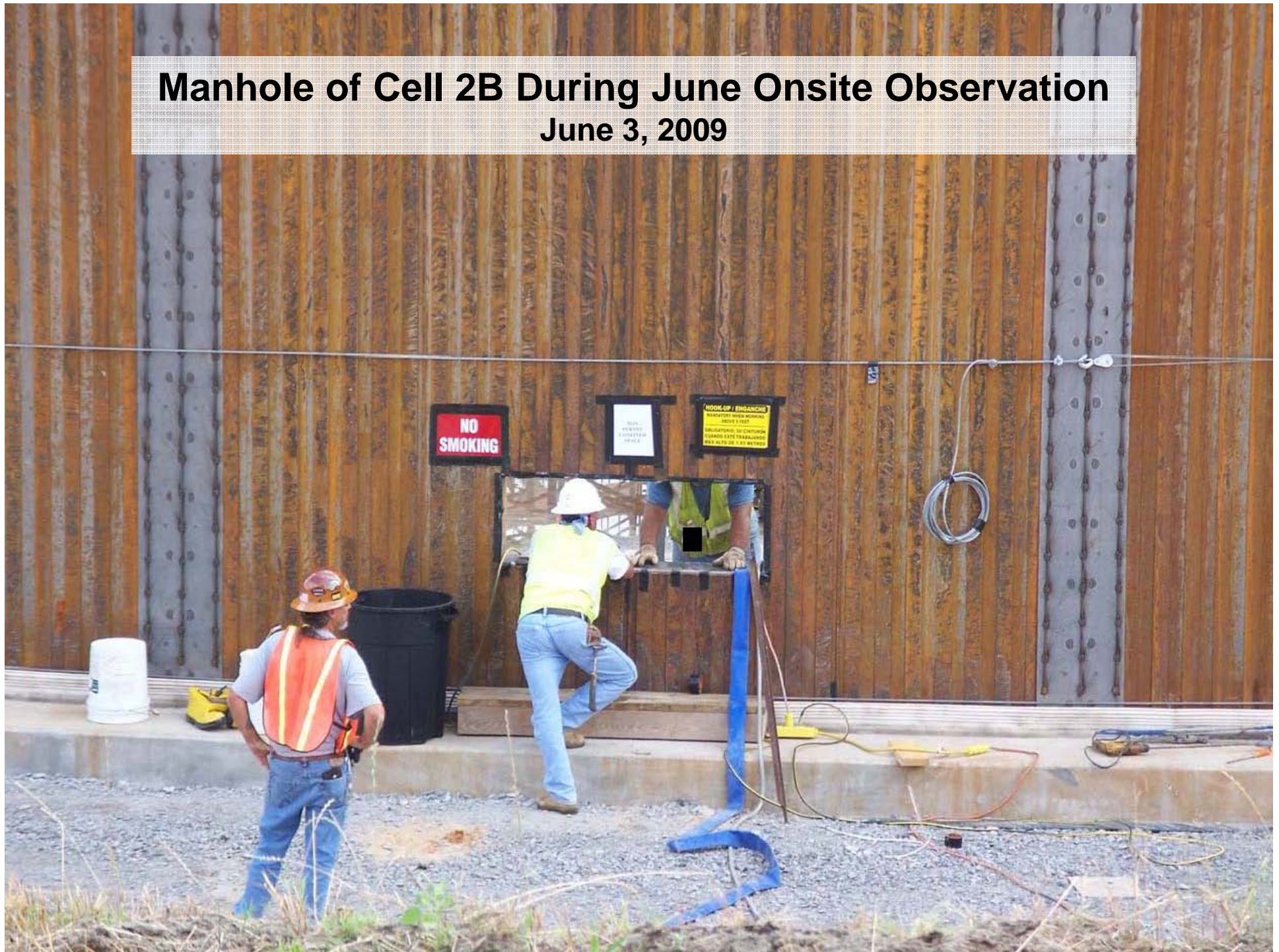


NRC Staff During Observation inside Cell 2B

June 3, 2009



Manhole of Cell 2B During June Onsite Observation June 3, 2009



Inside Cell 2A During June Observation Visit

June 3, 2009



Inside Cell 2A During June Observation Visit

June 3, 2009



Inside Cell 2B During June Observation Visit

June 3, 2009

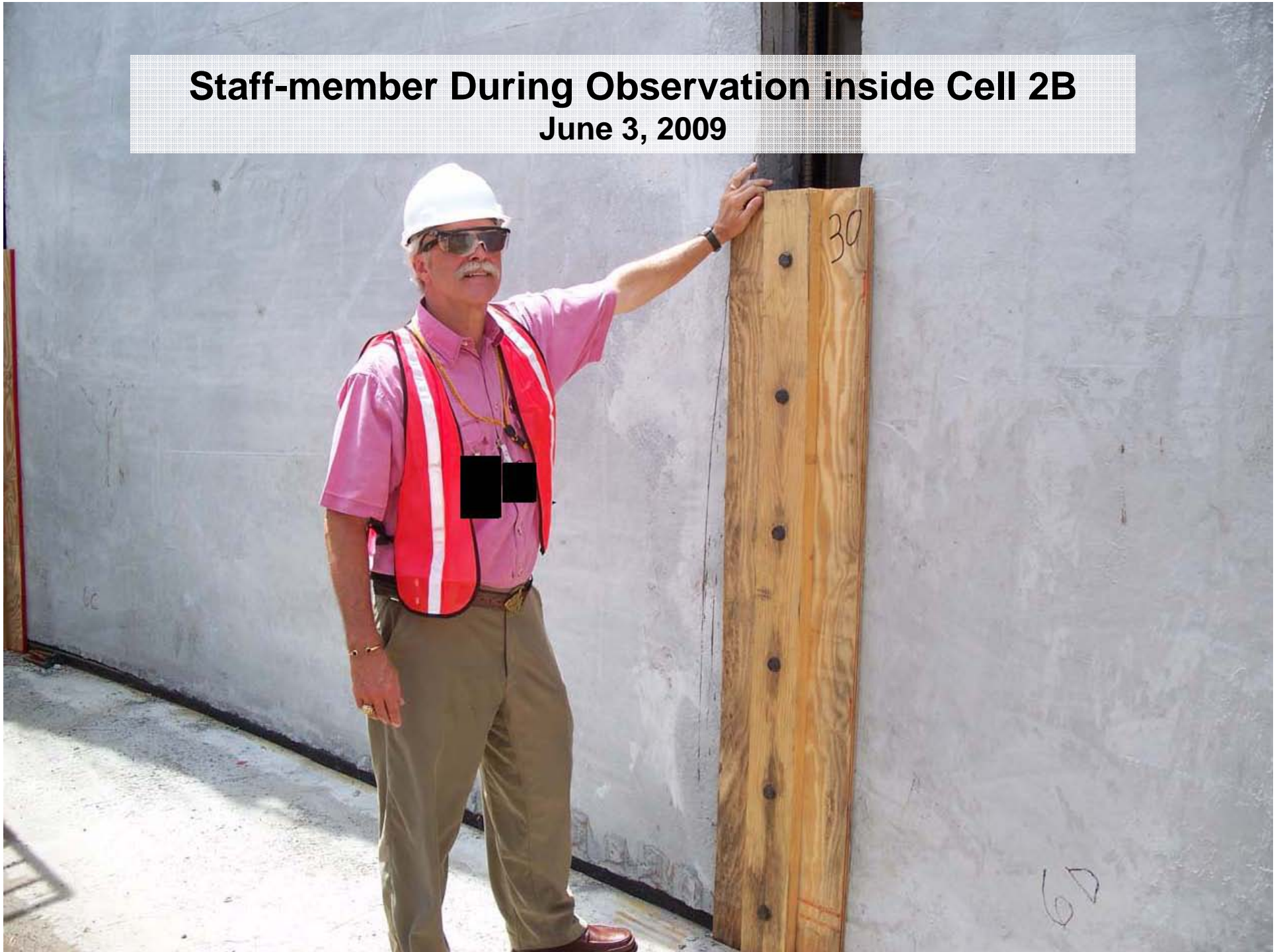


NRC Staff Inside Cell 2A During Observation Visit

June 3, 2009



Staff-member During Observation inside Cell 2B
June 3, 2009



Staff-member Exiting Through Cell 2B Manhole

June 3, 2009



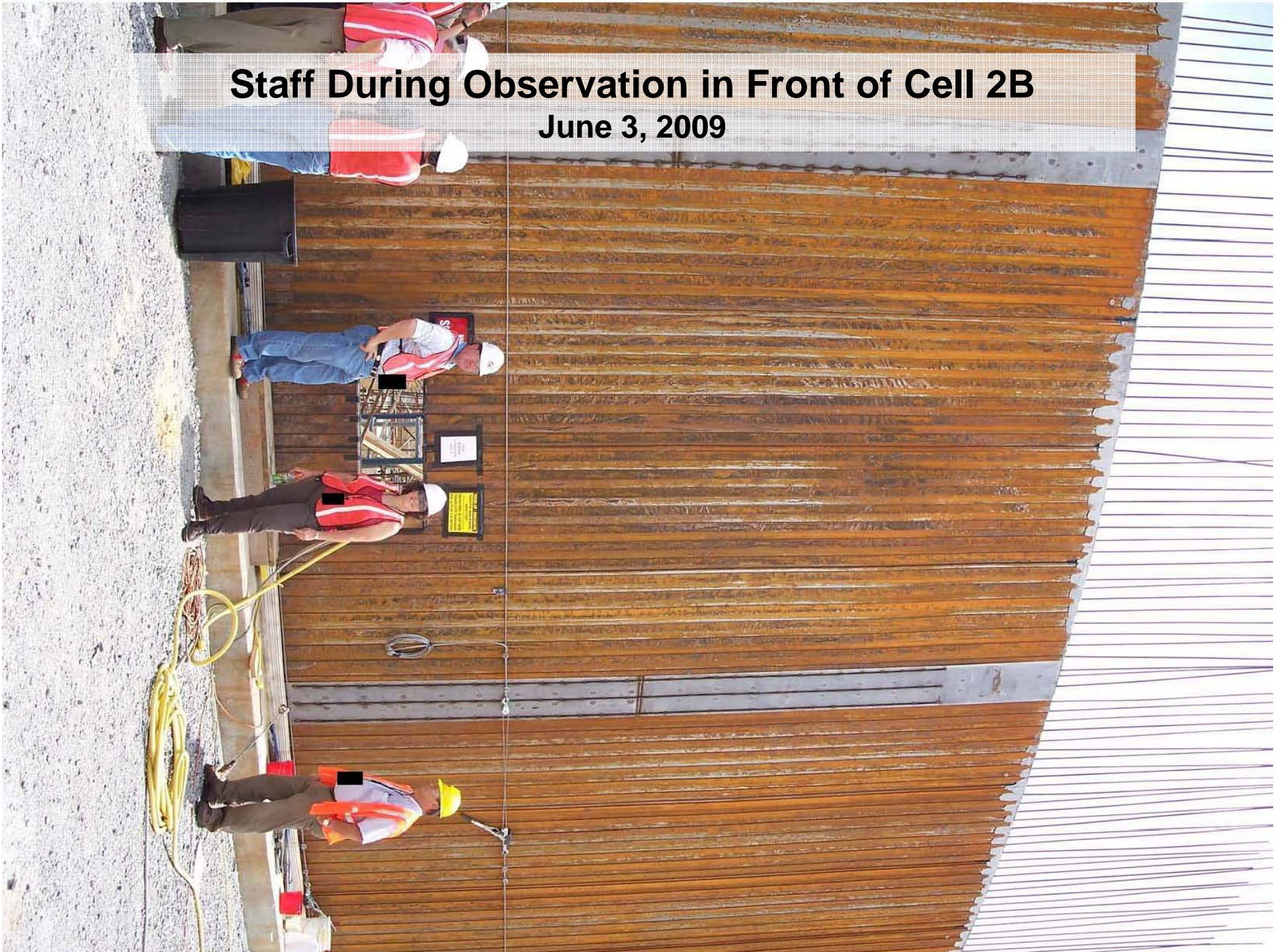
Cell 2B Panel Joint During June Onsite Observation

June 3, 2009



Staff During Observation in Front of Cell 2B

June 3, 2009



Staff During Observation in Front of Cell 2B

June 3, 2009

