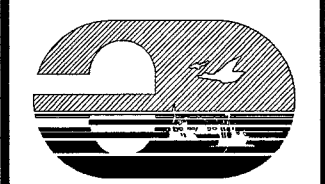


FOR P&ID REFERENCE DRAWINGS, SYMBOLS AND ABBREVIATIONS
REFER TO DRAWINGS P&ID - LEGEND 1 AND P&ID - LEGEND 2

- NOTES:
- 1. ALL LINES, EQUIPMENT, COMPONENTS AND INSTRUMENTATION ARE PREFIXED "FP", UNLESS NOTED OTHERWISE.
 - 2. WORK THIS DRAWING WITH DRAWINGS 20266 THRU 20275
 - 3. ALL LINES, EQUIPMENT, COMPONENTS AND INSTRUMENTS ARE SAFETY CLASS NNS
 - 4. INDICATES REVISION LEVEL
 - 5. DELETED
 - 6. N.I. INDICATES PIPING AND EQUIPMENT NOT INSTALLED.
 - 7. F.P. STRAINERS ARE LOCATED INSIDE BUILDING

15	1/23/01	KCS	JM	ML	INCORP MMOD 07-522 DCN-00, 01
14	01/02/00	KCS	JM	PAL	PARTIAL INCORP MMOD 07-522 DCN-00, 01
13	4/20/00	BCS	JM	PAL	INCORP DCR 03-002 DCN-00, DCR 02-016 DCN-00
12	10/08/02	MPW	JM	BCS	REINCORP DCR 99-0008 DCN 00
11	08-13-02	JM	MPW	BCS	INCORP CR 00-08724-01; ADDED DWG No.
10	08-24-00	DWS	MPW	SNC	INCORP DCR 99-0008 DCN-00
9	10-22-97	DWS	MPW	SNC	INCORP MMOD 95-0585 CA-2
8	12/03/94	BCL	DWS	BCL	INCORPORATED MMOD 92-553 CA-01
7	2/21/90	MRB	JM	ERT	INCORPORATED DCR 89-78 CA16
6	2/20/90	MRB	APL	RB	INCORP DCR 87-233 CA 1, FMR 89-001 CA* 0, REVISED VALVE POSITION FROM OPEN TO CLOSED FOR 2-FP-V590 PER P&ID 20274 AND NOTE 2.
5	2/3/89	MRB	GPM	ERT	INCORP DRR 88-15 CA0 REVISED FIRE HOSE REEL ASSEMBLY ADDED V410, V37, V590, V652, 2-FP-V590, V402 & V483 PER P&ID 20274. DELETED LEGEND INFORMATION
4	7/22/87	GPM	WRD	ERT	MODIFIED DWG TO REFLECT OVERVIEW INFO ONLY, INCORP NCR 87-0007, ADDED FIRE HYDRANTS & REVISED NOTE 3.
3	9/2/86	MAP	JDM	RRR	RE-INCORP NCR 82/992C INCORP ECA 99/1161550
2	7/2/86	WES	BCL	RRR	INCORP ECA'S 19/115031A, 06/115729A, NCR 82/992C, 99/114463A, 99/116155C AND UPDATED PER UE&C P&ID REVIEW CHANGE ITEM RESOLVED PER ECA 99/086173A
1	1/22/86	WES	DWS	EWD	ISSUED FOR OPERATIONS, GENERAL REVISIONS & INCORP ECA 99/110597A
0	10/16/84	CB	JNM	PEF	ISSUED FOR FIELD VERIFICATION
REV	DATE	DSGN	CHKD	CE	DESCRIPTION

FPL ENERGY Seabrook Station



FIRE PROTECTION
OVERVIEW


PID- 1-FP-B20264

FOR YARD PIPING REFER TO FP-20274

9763-F-604068	16	YARD FP P&ID
9763-F-604069	15	YARD & FIRE PUMPHOUSE FP P&ID
REF. DRAWING NO.	REV	TITLE

FOR P&ID REFERENCE DRAWINGS, SYMBOLS AND ABBREVIATIONS
REFER TO DRAWINGS P&ID - LEGEND 1 AND P&ID - LEGEND 2

NOTES:

1. ALL LINES, EQUIPMENT, COMPONENTS AND INSTRUMENTS HAVE SYSTEM PREFIX FP, UNLESS NOTED OTHERWISE.
2. DELETED
3. DELETED
4. STANDPIPE SYSTEM WITHIN CONTAINMENT SHALL BE DRAINED PRIOR TO OPERATION OF UNIT. VALVE MUST BE CLOSED IN MODE 1,2,3,4 AND CAN BE OPENED IN MODE 5.
5. ALL LINES, EQUIPMENT, COMPONENTS AND INSTRUMENTS ARE SAFETY CLASS NNS, UNLESS NOTED OTHERWISE.
6. SEE DETAIL A, DWG. 20272.
7. SEE DETAIL B, DWG. 20272.
8. SEE DETAIL C, DWG. 20272.
9.  INDICATES REVISION LEVEL.
10. DELETED
11. DELETED
12. DELETED
13. DELETED
14. DELETED

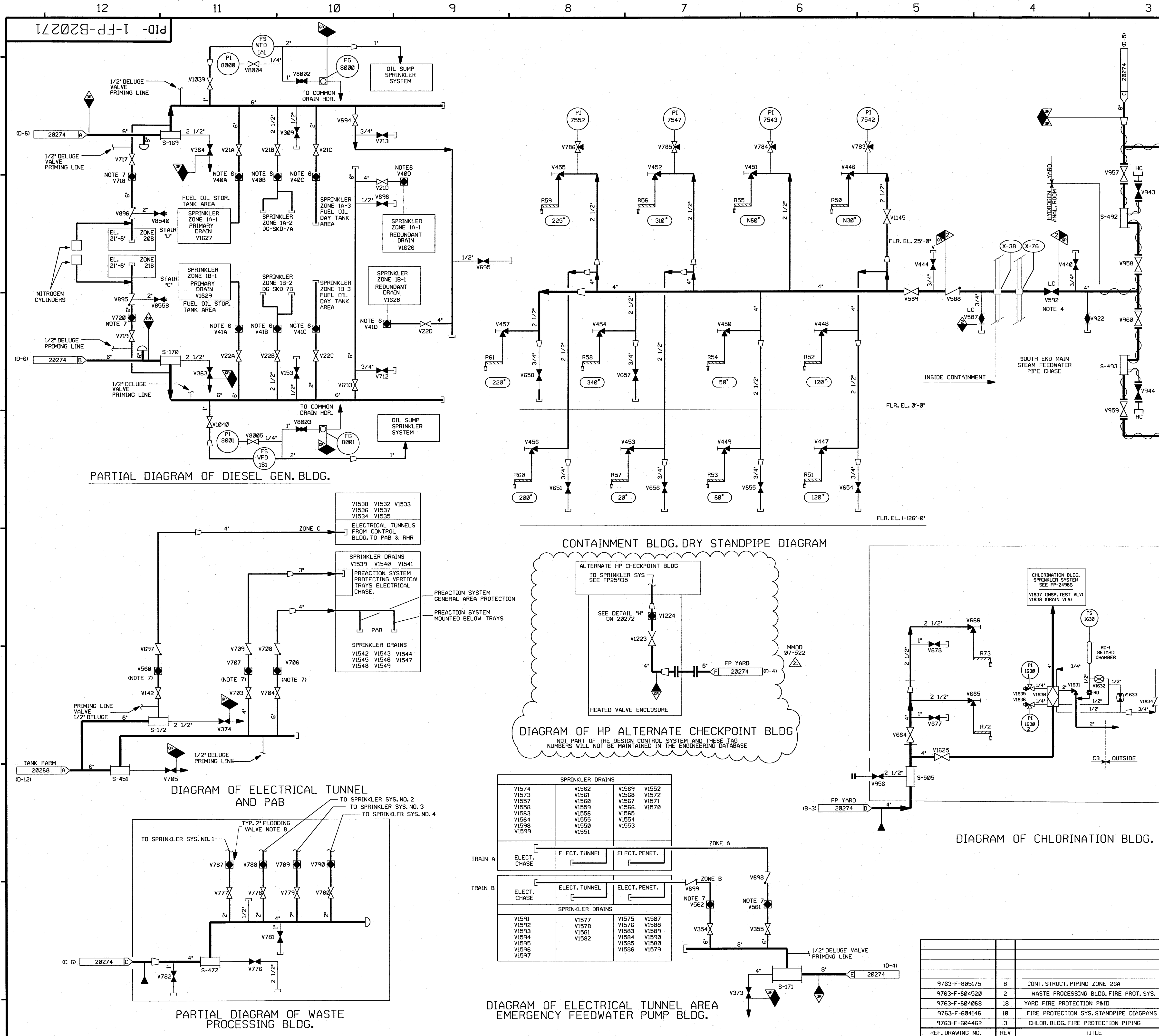
PORTIONS OF THIS DRAWING ARE
NUCLEAR SAFETY RELATED

21	1/14/03	KCS	JM	022	INCORP MMOD-07-522, DCN-00 & 01
20	10/02/06	BSCS	JM	SPD	INCORP DCR 99-13, DCN-00
19	3/16/86	BSCS	JM	DMF	INCORP DCR 99-13, DCN-00 (PARTIAL)
18	8/28/03	BSCS	MPW	ERT	RE-INCORP ECA 99/1482A
17	7/28/03	BSCS	JM	MPW	RE-INCORP ECA 99/1482A
16	1/1/82	BSCS	JM	ERT	INCORP DCR 00-0004 DCN-00, 02
15	8/31/00	BSCS	MPW	AJK	INCORP MSE 99-328 REV. 8, ECA 99/1482A
14	6/2/98	DRL	MPW	VWS	INCORP MMOD 96-550 DCN 02 & MMOD 97-521 DCN 00
13	8/18/97	MPW	BSCS	VWS	INCORP MMOD 96-550 DCN 01
12	6/7/97	MPW	DWS	BAB	INCORP DCR 96-31 DCN#02
11	3/28/94	DWS	BCL	JRM	INCORP DCR 920012 CA#0
10	4/17/92	MRB	DWS	RRB	INCORP MMOD 91-515 CA0
9	8/25/90	MRB	JM	ERT	INCORP DRR 89-41 REV 1 DELETED OPEN ITEM ABOVE AND NOTES 1 & 13 PER REVISED NOTE 1 ADDED FLOW SWITCHES PER RES 88-427
8	6/23/89	MRB	PAL	ERT FOR RB	INCORPORATED DRR 89-41 REV 0 DELETED FIRE HOSE LEGEND
7	10/7/88	GPM	APL	ERT	INCORP DCR 86-715 CA 02 ADDED NOTE 14
6	5/16/88	DWS	GPM	ERT	ADDED CHANGE ITEM-2 REVISED VALVE NO'S FROM V8005, 7 TO V8540, 58. DELETED MMS-1 DESIGNATION INCORP DCR 87-730
5	9/8/87	GPM	MRJ	ERT	REVISED: NOTE 5, CONTAM DWG NO. ADDED NOTE 13, CHANGE ITEM 1, OR BOUNDARIES.
4	12/30/86	MPW	WRD	DCM	ADDED WPB SPRINKLER SYS. NO'S. PER FP-46830. REVISED DWG. CONTIN. REF'S REMOVED SPRINKLERS FOR CABLE SPREADING AREA. ADDED NOTES 11 & 12, AND REDREW ELEC. TUNNEL AND PAR PER ENG. COMMENTS CORRECTED DRAFTING ERRORS. ADDED VALVS V8086, V8087 PER GRINNELL MANUAL. CONT. REF. LOCATIONS. CHANGED VALVE V587 FROM GATE TO PLUG AND ADDED CAP PER ERECTION ISO. DELETED NOTE 10.
3	9/2/86	MAP	PAL	RRC	INCORP ECA 03/114381A, 99/117673A
2	6/27/86	JDM	BCL	RRC	INCORP NCR 82/1992C, ECA 99/090108B APPROVED CHANGE ITEM NUMBERS 2,3,4,5 BY DETAILING VENDOR PIPING ADDED VALVE NOS. & PT NOS.
1	1/22/86	WES	DWS	EWD	ISSUED FOR OPERATIONS GENERAL REVISIONS
0	10/16/84	CB	JNM	PEF	ISSUED FOR FIELD VERIFICATION
REV	DATE	DSGN	CHKD	CF	DESCRIPTION

FPL ENERGY Seabrook Station

FIRE PROTECTION DETAILS

PID-	1-FP-B20271
------	-------------



PID-1-FP-B20274

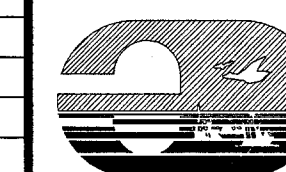
FOR P&ID REFERENCE DRAWINGS, SYMBOLS AND ABBREVIATIONS
REFER TO DRAWINGS P&ID - LEGEND 1 AND P&ID - LEGEND 2

- NOTES:
1. ALL LINES, EQUIPMENT, COMPONENTS AND INSTRUMENTATION ARE PREFIXED "FP", UNLESS NOTED OTHERWISE.
 2. WORK THIS DRAWING WITH DRAWINGS 20264, 20266 THRU 20275.
 3. ALL LINES, EQUIPMENT, COMPONENTS AND INSTRUMENTS ARE SAFETY CLASS NNS
 4. Δ INDICATES REVISION LEVEL
 5. N.I. INDICATES PIPING AND EQUIPMENT NOT INSTALLED.
 6. F.P. STRAINERS ARE LOCATED INSIDE BUILDING, EXCEPT CONTAINMENT.
 7. THESE DEVICES ARE PART OF UNIT 1.

15	1/24/08	KCS	JM	PL	INCORP MMOD 07-522 DCN 00, 01
14	01/02/08	KCS	JM	PAL	PARTIAL INCORP MMOD 07-522 DCN 00, 01
13	9/22/05	BCS	JM	RRB	INCORP DCR 03-002 DCN-00
12	5/8/02	MPW	JM	RRB	INCORP MSE 02-074 REV. 00
11	6/22/00	DWS	MPW	JNE	INCORP DCR 99-008 DCN*00 & 05
10	6/22/98	DRL	BCS	VWS	INCORP MMOD 97-521 DCN 00
9	10/22/97	DWS	MPW	SNC	INCORP MMOD 950585 CA* 02
8	3/4/94	MRB	BCL	GRM	INCORP MMOD 92-553 CA01
7	3/31/93	MRB	BCL	JCM	INCORP MMOD 92-553 CA00
6	4/21/92	MRB	BCL	JEV	INCORP MMOD 91-515 CA0,01
5	12/21/90	MRB	RMC	ERT	INCORP DCR 89-78 CA 16
4	9/24/90	MRB	JM	BCL	INCORP MMOD 90-516 CA 0

3	2/20/90	MRB	APL	RB	INCORP DCR 87-233 CA 1 & MMOD 89-545 INCORP FMR 89-001 CA00 REVISED: OPERATOR VALVE SYMBOL, DWG CONT COORDS AND NOTE 2. ADDED: DWG CONT NO & COORD.
2	2/3/89	MRB	GPM	ERT	INCORPORATED DRR 88-15 CA0 DELETED: LEGEND INFORMATION REVISED: F.H. NO 12 TO 22 PER IJC & C DRAWING
1	9/8/87	GPM	MPW	ERT	INCORP ECA 99/1161550, REVISED: PIPING CONFIG PER NCR 87-0007, NOTE 3, ADDED: OR BOUNDARYS & CORRECTED DRAFTING ERRORS.
0	1-8-87	SHY	WRD	ERT	ISSUED FOR OPERATIONS
REV	DATE	DSGN	CHKD	CE	DESCRIPTION

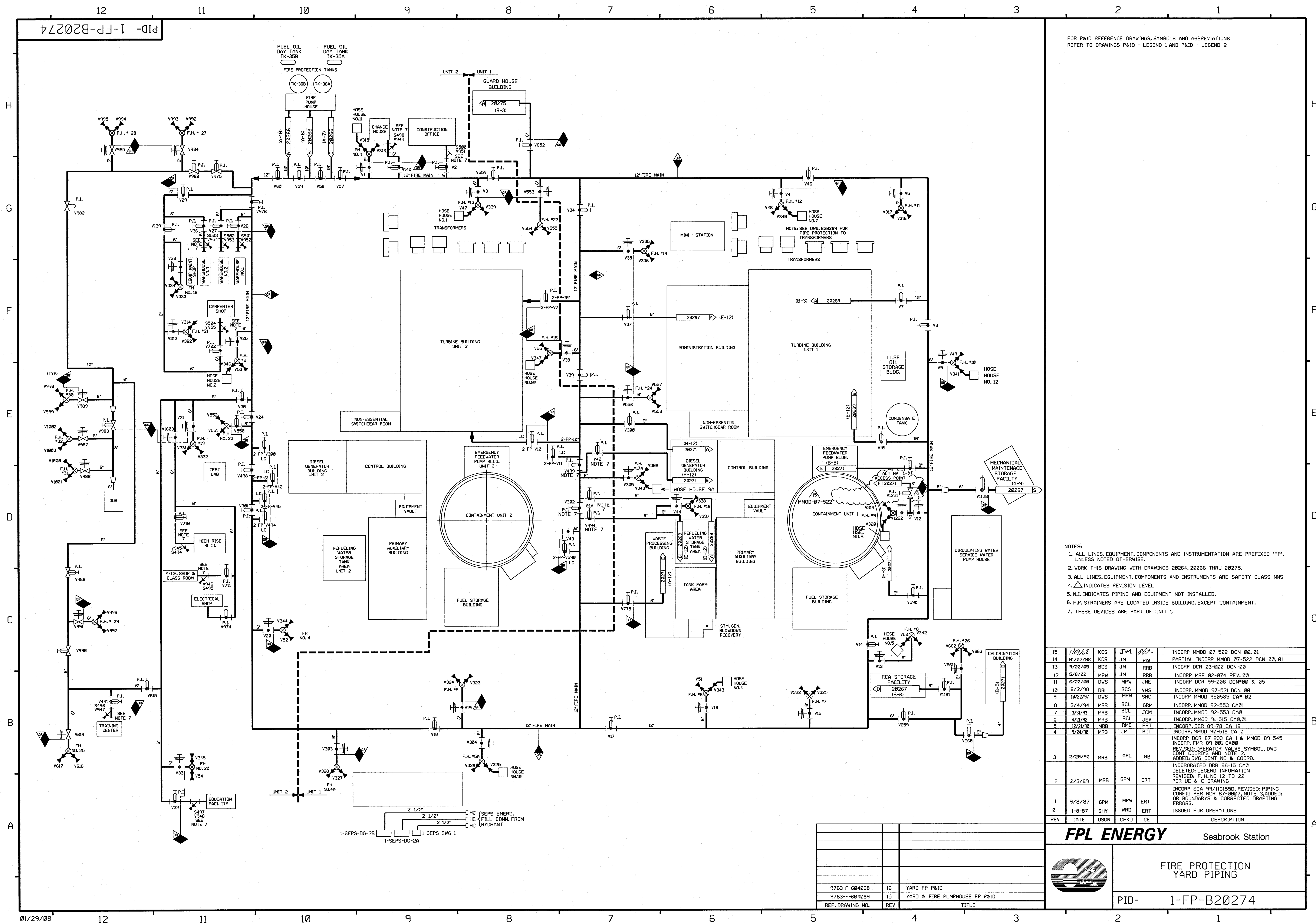
FPL ENERGY Seabrook Station



FIRE PROTECTION
YARD PIPING

PID- 1-FP-B20274

REF. DRAWING NO.	REV	TITLE
9763-F-604068	16	YARD FP P&ID
9763-F-604069	15	YARD & FIRE PUMPHOUSE FP P&ID



9920-B20266

PID-

H

G

F

E

D

C

B

A

2

1

FOR P&ID REFERENCE DRAWINGS, SYMBOLS AND ABBREVIATIONS
REFER TO DRAWINGS P&ID-LEGEND 1 AND P&ID-LEGEND 2.

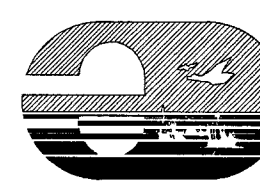
NOTES:

1. ALL LINES, EQUIPMENT, COMPONENTS AND INSTRUMENTATION HAVE SYS. PREFIX FP, UNLESS NOTED OTHERWISE.
2. WORK THIS DRAWING WITH DRAWINGS 20264 AND 20267 THRU 20272.
3. ALL LINES, EQUIPMENT, COMPONENTS AND INSTRUMENTS ARE SAFETY CLASS NNS, UNLESS NOTED OTHERWISE.
4. DELETED
5. SEE DETAIL 'D' DWG. 20272.
6. Δ INDICATES REVISION LEVEL.
7. DELETED
8. -OR- CALIBRATION ONLY
9. VENTS & DRAIN TAP OR BOUNDARY ARE AT THE DOWN STREAM END OF THE OUTER ISOLATION VALVE.

23	10/22/07	BCS	JM	ERT	INCORP. MMOD 07-505 DCN-00
22	12/30/03	BCS	JM	RRB	INCORP. CR 02-13172 REV. 00
21	6/11/03	JM	BCS	MPW	INCORP. CR 03-00751 REV 00
20	8/13/02	JM	MPW	BCS	INCORP. CR* 00-02311-01
19	10/15/01	JM	BCS	JCM	INCORP. CR* 01-04266-01
18	5/26/00	BCS	MPW	JCM	INCORP. DCR 98-24 DCN 10
17	4/28/00	BCS	MPW	JCM	INCORP. DCR 98-24 DCN 00, 02, 03, 07
16	2/23/00	BCS	DWS	JCM	PARTIAL INCORP. DCR 98-24 DCN 00
15	1/20/99	BCS	DWS	JCM	INCORP. MMOD 98-634 DCN 00
14	10/30/98	MPW	BCS	DJM	INCORP. MMOD 97-534 DCN 00
13	11/25/97	BCS	MRB	ETM	INCORP. DCR 97-23 DCN-0
12	5/2/96	BCS	DWS	JCM	INCORP. DCR 95-18 CA-0
11	3/5/95	BCL	MPW	JCM	INCORP. MMOD 94-514 CA-0
10	3/8/94	MRB	BCL	GRM	INCORP. MMOD 92-553 CA-0 & MMOD 93-553 CA-0
9	12/13/93	MRB	BCL	RSC	INCORP. DCR 86-140 CA 04
8	11/1/93	BCL	DWS	JCM	INCORP. MMOD 93-501 CA-0
7	10/23/90	MRB	JM	ERT	INCORP. DRR 89-41 REV 01
6	5/22/89	GPM	MRB	ERT	INCORP. DCR 86-325 CA 01 & DRR 89-41 REVISED PIPING TO CLARIFY DUPLICATION OF SYSTEM INTERFACES
5	8/20/87	GPM	MRJ	ERT	ADDED: NOTE 4 AND ITEM IN THE ILL... DELETED: NOTE 4 AND ITEM IN THE ILL... REVISED NOTE 3, ADDED NOTE 8 & 9, OR BOUNDARIES DELETED NOTE 10.
4	04/08/87	MRJ	DWS	ERT	ADDED VALVES PER AS-INSTALLED CONDITIONS, REVISED SYMBOL FOR CHAIN OPERATED VALVES.
3	10/17/86	MPW	BCL	RRC	ADDED: CONT. REF. LOCATIONS, DELETED NOTE 1, REVISED INSTR. LOCATION PER ERECTION ISO. VALVE NOS. PER US&C P&ID, CORRECTED DRAFTING ERRORS LISTED ECA 99/16333A & OR 95/0068 IN JIL
2	6/24/86	DWS	VNK	RRC	CHANGE ITEMS 1, 2, 3, 4, 6 & 7 RESOLVED PER ECA 19/16491A, 99/14512A, OR 95/0068, OR-35, ADDED FUEL OIL CONT. & REV'D PH CONT.
1	1/22/86	WES	DWS	EVD	ISSUED FOR OPERATIONS GENERAL REVISIONS INCORPORATED ECA'S 99/17638, 99/02708 & 05/001000E
REV	DATE	DSGN	CHKD	CE	DESCRIPTION

FPL ENERGY

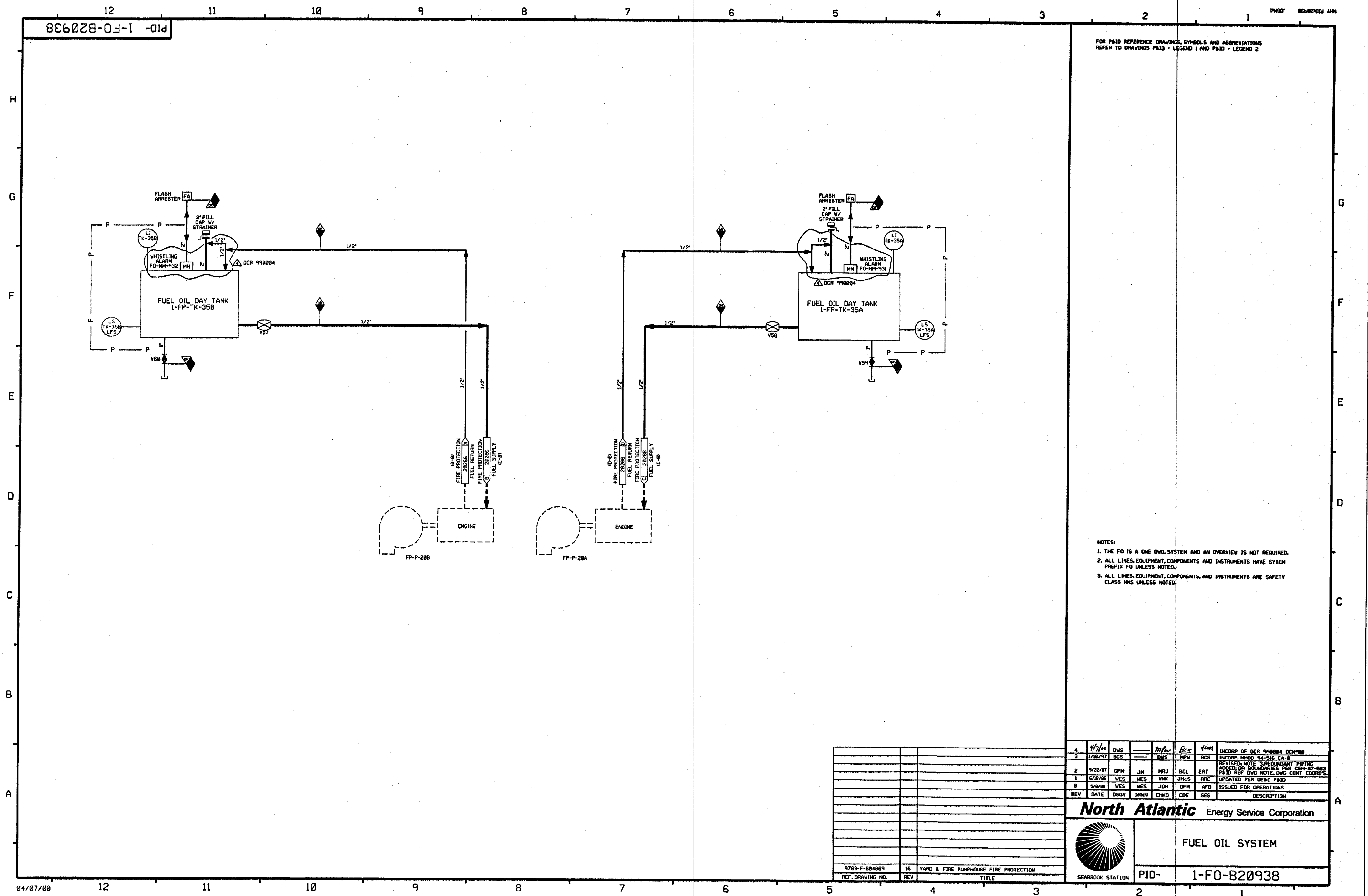
Seabrook Station



FIRE PROTECTION
FIRE PUMP HOUSE
DETAIL

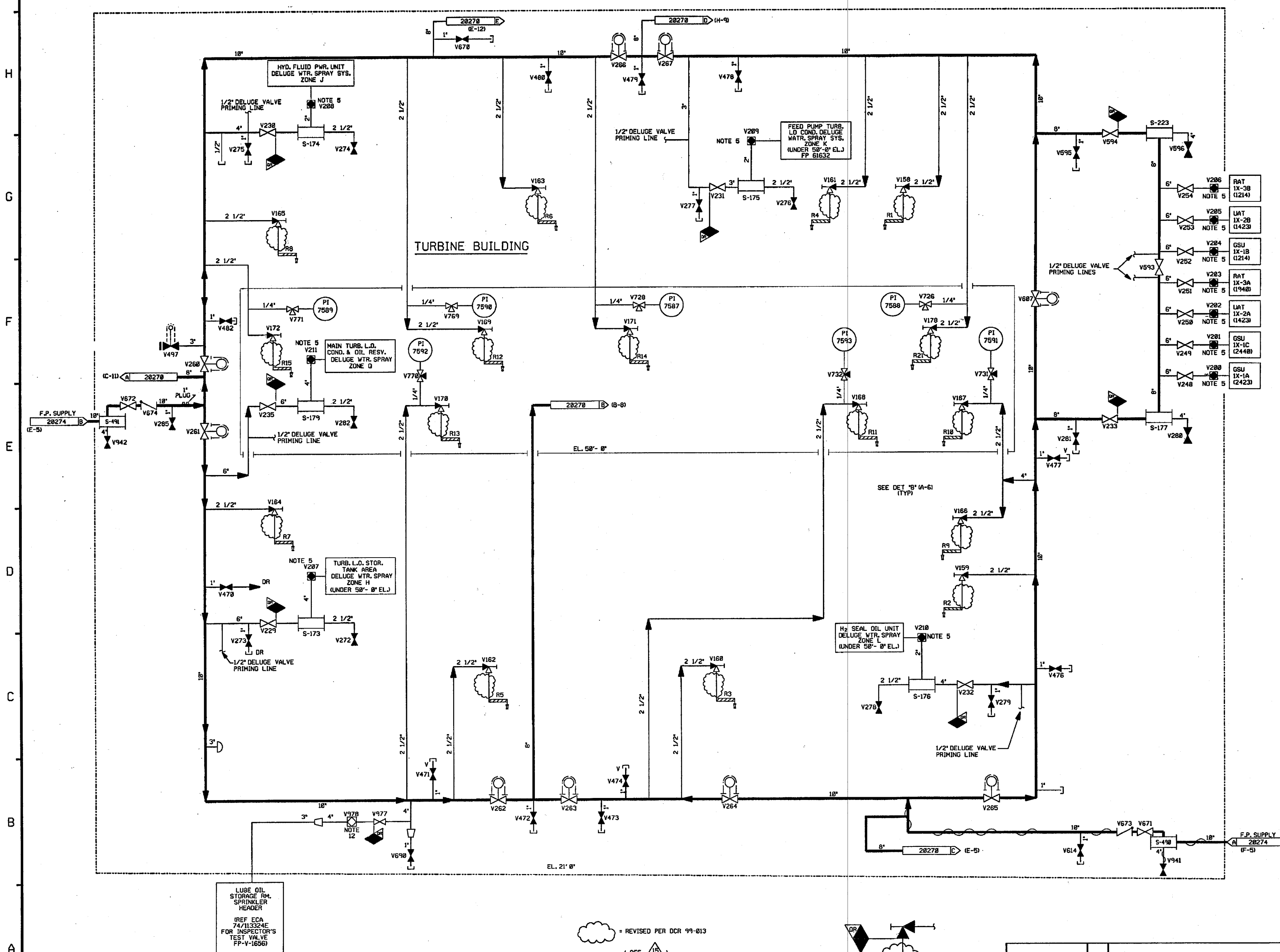
PID- 1-FP-B20266

9763-F-604069	18	YARD & FIRE PUMP HOUSE PIPING DIAGRAM
REF. DRAWING NO.	REV	TITLE



PID-1-FP-B20269

FOR P&ID REFERENCE DRAWINGS, SYMBOLS
AND ABBREVIATIONS REFER TO DRAWINGS
P&ID - LEGEND 1 AND P&ID - LEGEND 2.

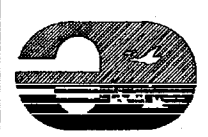


- NOTES:
1. ALL LINES, EQUIPMENT, COMPONENTS AND INSTRUMENTATION ARE PREFIXED "FP", UNLESS NOTED OTHERWISE.
 2. WORK THIS DRAWING WITH DRAWINGS 20264, 20265, 20267, 20268, 20270, 20271, THRU 20274.
 3. DELETED
 4. ALL LINES, EQUIPMENT, COMPONENTS AND INSTRUMENTS ARE SAFETY CLASS NMS, UNLESS NOTED OTHERWISE.
 5. SEE DETAILS ON PID 20272.
 6. Δ INDICATES REVISION LEVEL.
 7. DELETED
 8. DELETED
 9. \diamond INDICATES DWG. CHANGE ITEM NUMBER.
 10. VENT, DRAIN & INSTRUMENT TAPS OR BOUNDARY ARE AT THE DOWNSTREAM END OF THE OUTER ISOLATION VALVE.
 11. SEE DETAIL "B" ON DWG 20272.

15	3/16/06	BCS	JM	DH	INCORP. DCR 99-13 DCN-00
14	9/29/05	BCS	JM	RRB	INCORP. CR 05-09878 REV. 8
13	12/28/04	BCS	JM	RRB	INCORPORATED MMD 04-520 DCN-00
12	10/31/02	BCS	MPW	MKC	INCORPORATED DCR 00-014 DCN-00
11	5/24/02	MPW	BCS	DJM	INCORPORATED DCR 97-012 DCN 27
10	8/27/99	MPW	BCS	RWS	ADDED LINE SIZE PER FP 61632, REVISED NOTE 5 FOR GENERAL REFERENCE.
9	12/16/94	BCL	MPW	RSG	INCORPORATED MMD 94-548 CA#
8	3/24/94	MRB	BCL	WFZ	INCORPORATED MMD 92-553 CA#01 & DCR 930016 CA#0
7	3/31/93	MRB	BCL	JCM	INCORPORATED MMD 92-553 CA#
6	4/28/92	MRB	DWS	RRB	INCORPORATED MMD 91-518 CA#
5	9/20/87	MPW	DWS	RRB	INCORPORATED DCR 87-157
4	8/19/87	GPM	MPW	EAT	REVISED NOTE 4, REINCORPORATED ECA 74/113324E, ADDED OR BOUNDARIES DET. 8, NOTES 9, 10, CHANGE ITEMS 1&2.
3	12/28/86	MPW	WRD	DCM	REVISED CONT. REFS., LUBE OIL STORAGE ROOM SPRINKLER HEADER LOCATION PER FIELD WALKDOWN, REVISED CHAIN OPERATOR SYMBOL PER P&ID LEGEND ADDED NOTE 8.
2	6/23/86	VES	VNK	RRB	ADDED REF. DWG. LOCATIONS, DELETED NOTE 7, ADDED N.C. TO V497, PLUGS VENT AND DRAIN PIPING, CAPS, PLUGGED CONNECTIONS AND REVISED TIE-IN LOC. AND VALVE NO. PER ERECTION ISO.
1	1/22/86	VES	DWS	END	ISSUED FOR OPERATIONS GENERAL REVISIONS.
0	10/16/84	CB	JNM	PEF	ISSUED FOR FIELD VERIFICATION
REV	DATE	DSGN	CHKD	CE	DESCRIPTION

FPL ENERGY

Seabrook Station



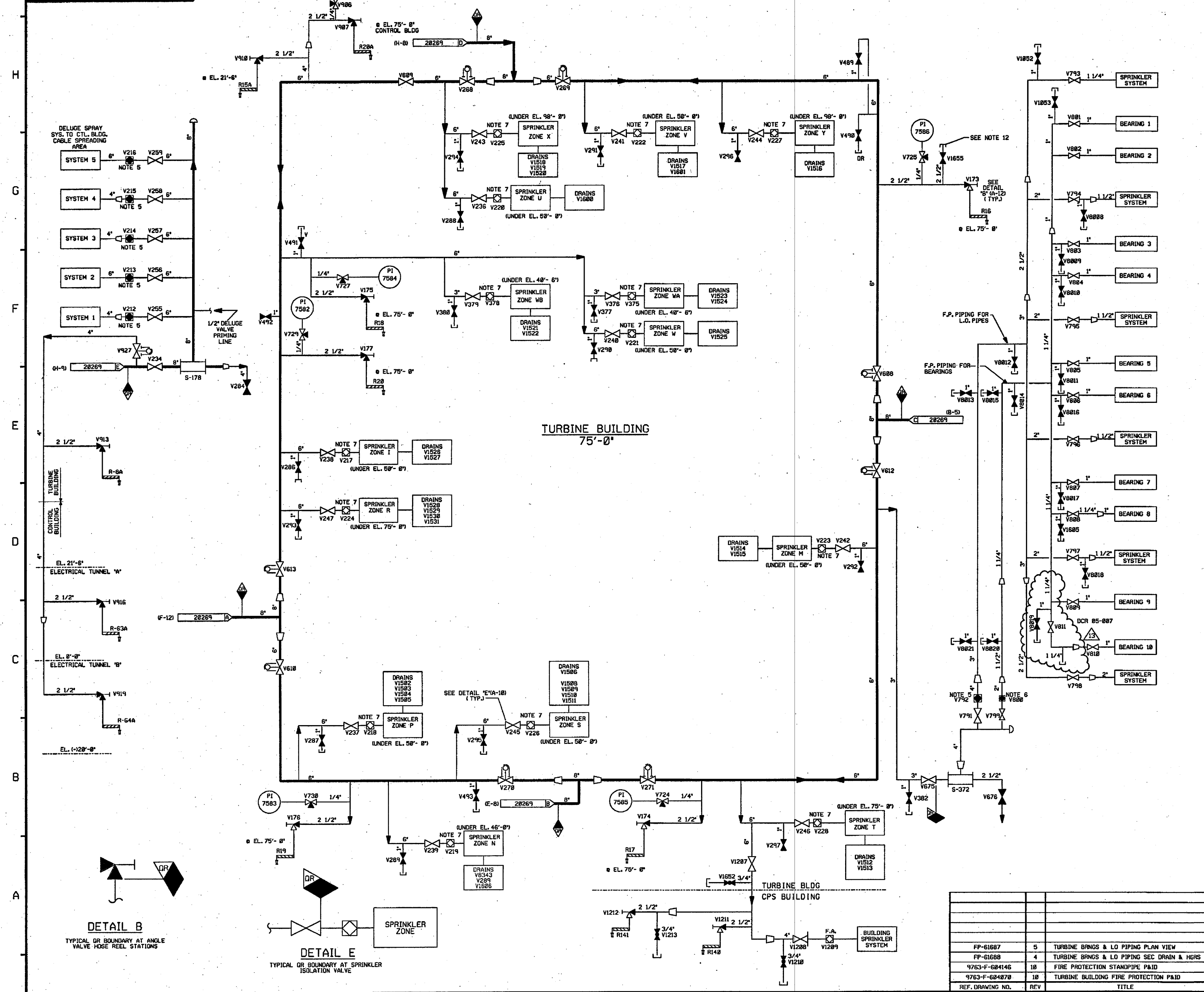
FIRE PROTECTION
TURBINE BUILDING
SHEET 1 OF 2

PID-1-FP-B20269

REV	DATE	DSGN	CHKD	CE	DESCRIPTION
9763-F-604078	10				TURBINE BLDG FIRE PROTECTION P&ID
					TITLE

PID-1-FP-B20270

FOR PAID REFERENCE DRAWINGS, SYMBOLS AND ABBREVIATIONS
REFER TO DRAWINGS PAID-LEGEND 1 AND PAID-LEGEND 2.



- NOTES:
1. ALL LINES, EQUIPMENT, COMPONENTS AND INSTRUMENTATION ARE PREFIXED "FP", UNLESS NOTED OTHERWISE.
 2. WORK THIS DRAWING WITH DRAWINGS 28264, 28266 THRU 28269, 28271 THRU 28274
 3. DELETED.
 4. ALL LINES, EQUIPMENT, COMPONENTS AND INSTRUMENTS ARE SAFETY CLASS NNS, UNLESS NOTED OTHERWISE.
 5. SEE DETAIL "A" DWG. 28272.
 6. SEE DETAIL "C" DWG. 28272.
 7. SEE DETAIL "D" DWG. 28272.
 8. Δ INDICATES REVISION LEVEL.
 9. DELETED.
 10. \diamond INDICATES DRAWING CHANGE ITEM NUMBER.
 11. VENTS, DRAINS & INSTRUMENT TAPS OR BOUNDARY ARE AT THE DOWNSTREAM END OF THE OUTER ISOLATION VALVE.
 12. PIPE IS CAPPED WHEN NOT CONNECTED BY HOSE TO OFFICE TRAILER SPRINKLER SYSTEM BY STATION PROCEDURE.

13	11/6/06	BCS	JM	RRB	INCORP DCR 05-007 DCM-28
12	10/15/06	BCS	JM	RRB	INCORP DCR 05-007 DCM-00
11	4/21/06	JM	RRB	JMJ	INCORP MSE 05-194 REV. 00
10	3/16/06	BCS	JM	DMQ	INCORP DCR 99-13 DCM-00
9	4/26/05	BCS	GPS	PAL	INCORP DCR 02-0016 DCM-06 & 15.
8	9/16/04	BCS	JM	PAL	PARTIAL INCORP DCR 02-0016 DCM-06
7	6/9/99	DWS	RWS	DJM	INCORP MMOD 970618 DCM-00
6	4/28/92	MRB	DWS	JEV	INCORP MMOD 91-515 C&B
5	10/19/90	MRB	JM	ERT	INCORP DRR 89-41 REV. 01 DELETED NOTE 9 AND OPEN ITEM ABOVE PER REVISED NOTE 3
4	6/23/89	MRB	PAL	ERT	REVISED VALVE NO. FROM V52 TO V1852, V53 TO V1853, NOTE 3 & 4. ADDED OR BOUNDARIES. NOTE 10 & 11 CHANGE ITEM 1, DETAILS 8 & E AND CONT. COORDS.
3	9/8/87	MPW/MPH	MRJ	ERT	REVISED FLOW VALVE SYMBOL PER ENG. COMMENTS, CHAIN OPERATED SYMBOL PER PAID LEGEND, ADDED ELEV. AND NOTE 9 CHANGED FLOW ALARM VALVE TO SPRINKLER VALVE. REVISED PER PIPING ERECTION ISD. REVISED PER FP-61687 & FP-61688. ADDED VALVE NO'S INCORP ECA 17/11/1998, DELETED CHANGE ITEMS.
2	12/30/86	MAP	WRD	GPM	ISSUED FOR OPERATIONS
1	1/22/86	WES	DWS	END	GENERAL REVISIONS
0	10/16/84	CB	JNM	PEF	ISSUED FOR FIELD VERIFICATION
REV	DATE	DSGN	CHKD	CE	DESCRIPTION

FPL ENERGY

Seabrook Station

**FIRE PROTECTION
TURBINE BUILDING
DETAIL
SHEET 2 OF 2**

PID- 1-FP-B20270



- NOTES:
1. ALL LINES, EQUIPMENT, COMPONENTS AND INSTRUMENTATION ARE PREFIXED "FP", UNLESS NOTED OTHERWISE.
 2. WORK THIS DRAWING WITH DRAWINGS 2826A, 2826G, 2826T & 2826V THRU 2827S.
 3. ALL LINES, EQUIPMENT, COMPONENTS AND INSTRUMENTS ARE SAFETY CLASS NNS, UNLESS NOTED OTHERWISE.
 4. Δ INDICATES REVISION LEVEL.
 5. DELETED
 6. DELETED
 7. VALVE 928 TO BE NORMALLY CLOSED DURING PERIODS OF FREEZING TEMP. HOSE RACK 31 IS DRY STAMPODE DURING THESE PERIODS.
 8. VENTS, DRAINS & INSTRUMENT TAPS OR BOUNDARY ARE AT THE DOWNSTREAM END OF THE OUTER ISOLATION VALVE.
 9. CONNECTION FOR EMERGENCY MAKE-UP TO CST USING TEMPORARY HOSE (CROSSING 67)

15	3/16/06	BCS	JW	DW	INCORP DCR 99-13 DCN-08
14	7/27/08	BCS	MPW	HWM	INCORP DCR 98-085 DCN-07
13	3/3/08	BCS	MPW	MKC	PARTIAL INCORP DCR 98-085 DCN-06, 0A, 0B
12	11/4/98	MPW	BCS	MAP	INCORP DCR 96-25 DCN 02
11	8/2/98	DRL	MPW	DVS	INCORP MMOD 96-558 DCN-02
10	5/27/97	MRB	DWS	RBB	INCORP DCR 96-25 DCN 03
9	3/1/94	MRB	BCL	DJM	INCORP MMOD 92-563 CAB1
8	4/15/93	BCL	MRB	GRM	INCORP MMOD 92-576 CAB
7	4/28/92	MRB	DWS	RBB	INCORP MMOD 91-515 CAB
6	4/3/98	MRB	APL	PJT	INCORP.DRR 98-332 REV 03 & MADE MINOR DRAFTING ENHANCEMENTS
5	1/25/89	GFM	MRB	ERT	INCORP DCR 88-004 CAB1
4	8/28/87	GFM	MPW	EAT	DELETED: MITO REF DWG REVISED: LINE CONT., NOTE 3, ROOM TITLE, VLY NO. & LABEL ADDED OR BOUNDARIES, DETAIL "A" NOTE 8, ROOM TITLES, CHANGING ITEMS 2 & 3, FUND DATA, CONT. COORD.
					ADDED NOTES 6 & 7, REVISED CONT. REFERENCES, ADDED BLOC, BOUNDARY, REVISED PIPING AND ADDED BUILDING SOUNDING INFO PER USAC P&ID AND PIPING ERECTION ISSUES AND DRAWING LOCATION COORDS, REVISED VALVE NO. V849 TO V848 WAS IN ERROR
3	12/30/86	MAP	WRD	DCM	
2	9/12/86	DWS	BCL	RRC	APPROVED CHANGING ITEM NO.3, 4 & 6 PER NEW LE & 2 REVISED REV. UPDATE REV DNG REVISION & REVISED DWG ACCORDING TO INCORP 88-004 CAB1 ISSUED FOR OPERATIONS
1	1/22/86	WES	DWS	END	GENERAL REVISIONS AND INCORP. ECA 86/01/4896, 18/7/87 & 1/7/08/2838A
0	18/16/84	DSN	JHM	PEF	ISSUED FOR FIELD VERIFICATION
REV DATE	CON	CHKD	CE		DESCRIPTION

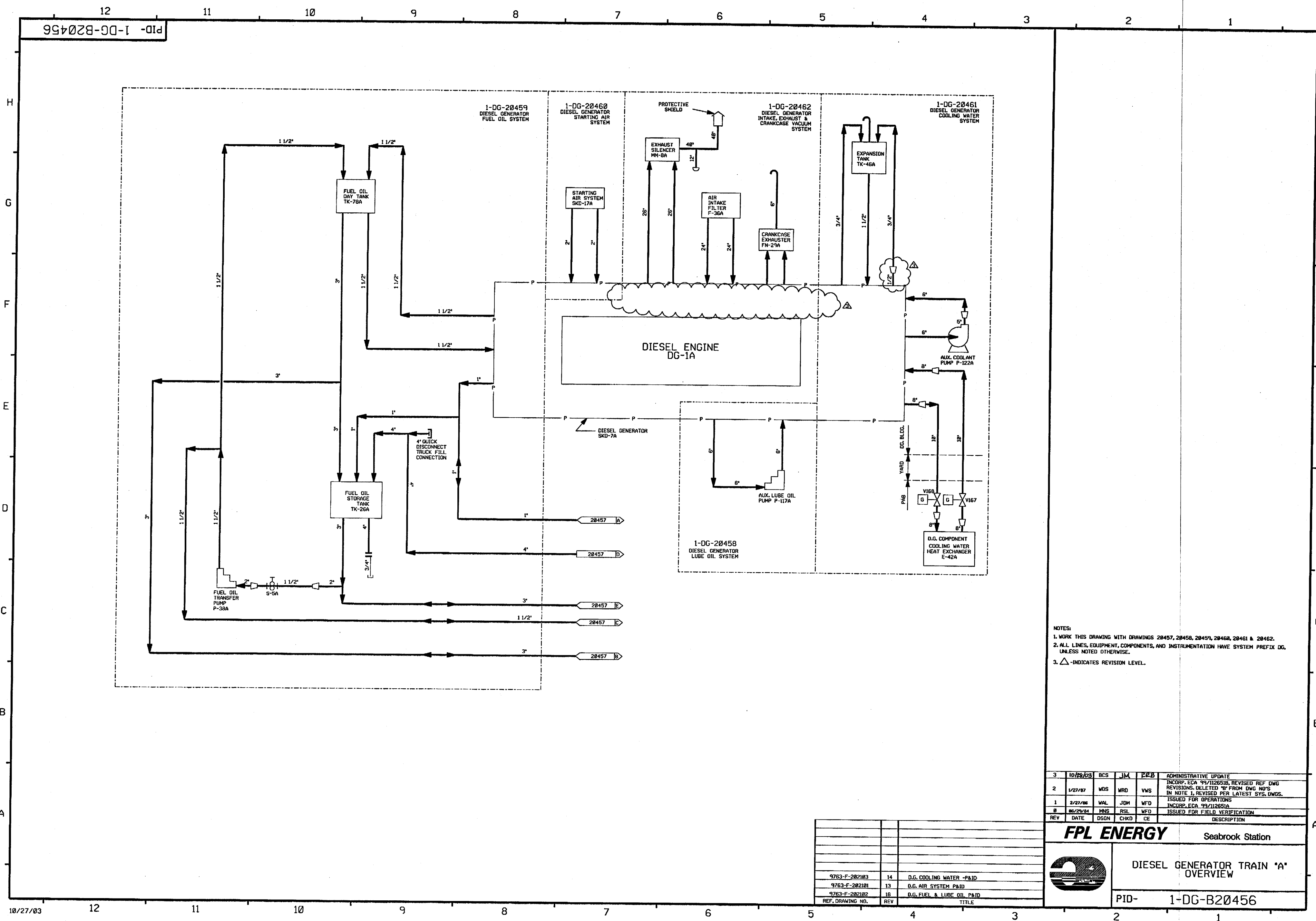
FPL ENERGY

Seabrook Station



FIRE PROTECTION
STANDPIPE
DETAIL

PID-	1-FP-B20268
------	-------------




NOTES:
1. WORK THIS DRAWING WITH DRAWINGS 20457, 20458, 20459, 20460, 20461 & 20462.
2. ALL LINES, EQUIPMENT, COMPONENTS, AND INSTRUMENTATION HAVE SYSTEM PREFIX DG, UNLESS NOTED OTHERWISE.
3. △ INDICATES REVISION LEVEL.

3	10/25/03	BCS	JM	228	ADMINISTRATIVE UPDATE
2	1/21/02	WDS	WRD	VWS	INCDP, ECA 99/112651B, REVISED REF DWG REVISIONS, DELETED "B" FROM DWG NO'S IN NOTE 1, REVISED PER LATEST SYS. DWGS.
1	2/27/00	WAL	JDH	WFD	ISSUED FOR OPERATIONS
0	06/29/94	MNS	RSL	WFD	INCDP, ECA 99/112651A
REV	DATE	DSGN	CHKD	CE	ISSUED FOR FIELD VERIFICATION

FPL ENERGY

Seabrook Station

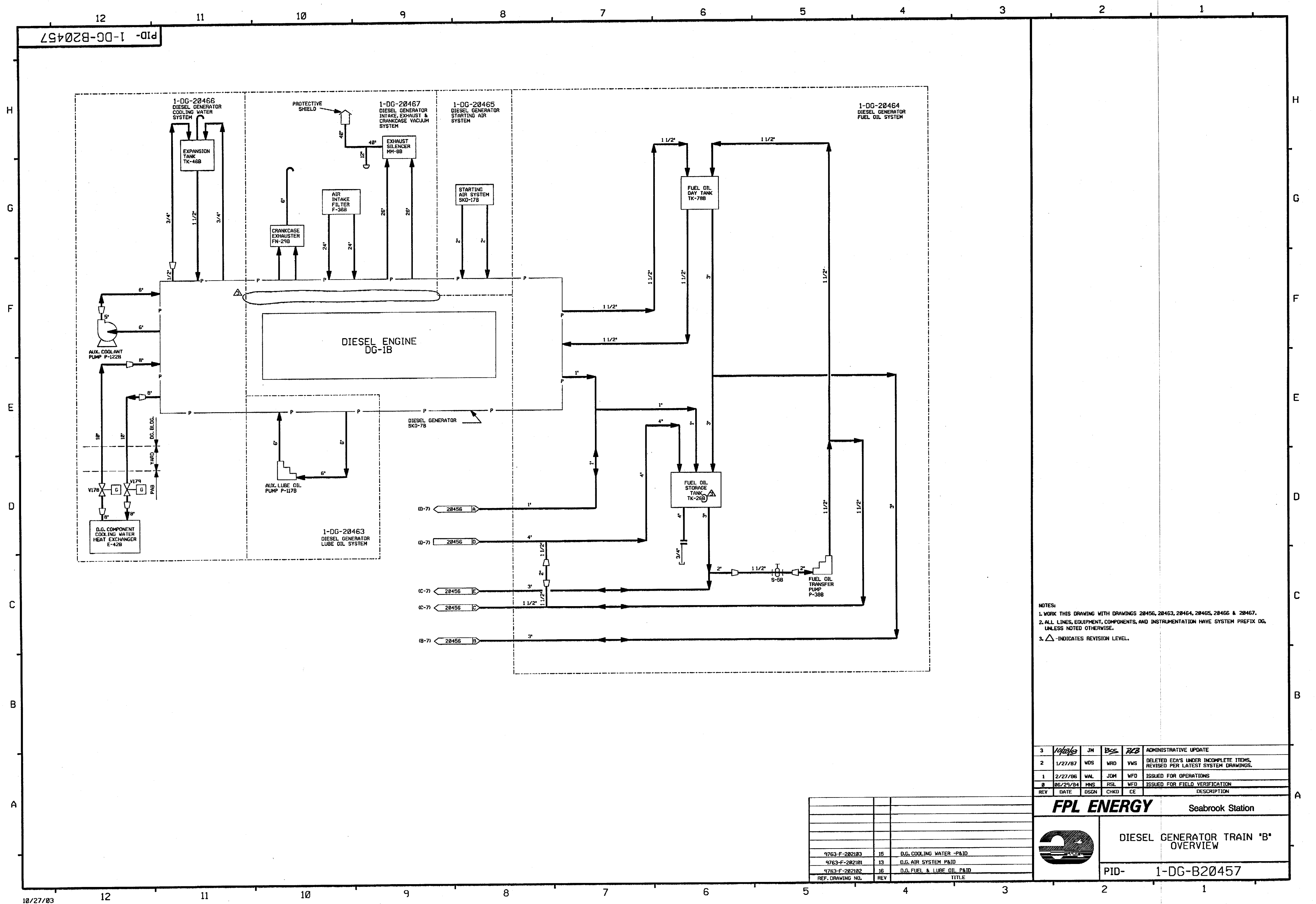


DIESEL GENERATOR TRAIN "A" OVERVIEW

PID-

1-DG-B20456

REF. DRAWING NO.	REV	TITLE
9763-F-202103	14	D.G. COOLING WATER -P&ID
9763-F-202101	13	D.G. AIR SYSTEM P&ID
9763-F-202102	16	D.G. FUEL & LUBE OIL P&ID



NOTES:
1. WORK THIS DRAWING WITH DRAWINGS 20456, 20463, 20464, 20465, 20466 & 20467.
2. ALL LINES, EQUIPMENT, COMPONENTS, AND INSTRUMENTATION HAVE SYSTEM PREFIX DG, UNLESS NOTED OTHERWISE.
3. Δ - INDICATES REVISION LEVEL.

3	10/27/03	JM	BSS	RKB	ADMINISTRATIVE UPDATE
2	1/27/07	WDS	WRD	VMS	DELETED ECA'S UNDER INCOMPLETE ITEMS, REVISED PER LATEST SYSTEM DRAWINGS.
1	2/27/06	WAL	JOM	WFD	ISSUED FOR OPERATIONS
0	06/29/04	MNS	RSL	WFD	ISSUED FOR FIELD VERIFICATION
REV	DATE	DSGN	CHKD	CE	DESCRIPTION

FPL ENERGY		Seabrook Station
DIESEL GENERATOR TRAIN 'B' OVERVIEW		
PID- 1-DG-B20457		

PID-1-DG-B20459

FOR P&ID REFERENCE DRAWINGS, SYMBOLS AND ABBREVIATIONS
REFER TO DRAWINGS P&ID - LEGEND 1 AND P&ID - LEGEND 2

PORTIONS OF THIS DRAWING ARE
NUCLEAR SAFETY RELATED

- NOTES:
1. WORK THIS DRAWING WITH DRAWINGS 20456, 20457, 20458, 20460, 20461, 20462 & 20464.
 2. ALL LINES, EQUIPMENT, COMPONENTS AND INSTRUMENTATION HAVE SYSTEM PREFIX DG, UNLESS NOTED OTHERWISE.
 3. DELETED.
 4. DELETED.
 5. INDICATES REVISION LEVEL.
 6. DELETED
 7. VENT, DRAINS AND TEST CONN. SAFETY CLASS AND CODE BREAKS ARE AT THE DOWNSTREAM END OF THE OUTER ISOLATION VALVE PER 1-NHY-805111, UNLESS NOTED OTHERWISE.

15	3/20/98	JM	BJS	JME	INCORP. MMOD 07-538 DCN 00 & MMOD 03-504 DCN 00
14	9/8/00	BCS	MPW	MKC	INCORP. DCR 90-029 DCN-0
13	11/1/95	MPW	BCS	VWS	INCORP. MMOD 96-550 CA0
12	11/1/95	BCL	MPW	RSG	INCORP. DCR 94-12 CA-0, 01 & MMOD 95-583 CA-0
11	5/27/94	MRB	JCM	GRM	INCORP. MMOD 92-546 CA0 & DCR 90-029 CA0
10	7/23/92	MRB	BCL	DJM	INCORP. DCR 90-013 CA5
9	5/26/92	MRB	BCL	DJM	PARTIAL INCORP. DCR 90-013 CA0
8	4/20/92	MRB	BCL	RRB	INCORP. MMOD 91-515 CA0
7	8/24/91	MRB	JM	RRC	INCORP. DCR 90-49 CA0 ADDED: SYSTEM & TRAIN DESIGNATION PER 1-NHY-506397 & 506399
6	8/14/89	MRB	APL	MAC	INCORP. DCR 89-33 CA 03 DELETED: CODE BREAKS PER NOTE 7.
5	1/7/87	MRJ	WRD	RRC	CORRECTED TAG NO. OF TK-26 REVISED DUPLEX STRAINER ARR'T. PER NCR 82/1006B, REV'D CODE FLAG PER SBP-86-876, CORRECTED DRAFTING ERROR. ADDED REF. DWGS.
4	10/3/86	MAP	JDM	RRC	ADDED CONT. COORDINATES. REVISED PER PIPING ERECTION ISO'S ADDED CODE BREAKS, REVISED LG-1A IN ERROR, DELETED '0' DESIGNATION IN NOTE 1 INCORP. NCR 73/35A
3	6/24/86	WAL	BCL	RRC	INCORP. ECR'S 99/112651/B & 08/1101738
2	2/27/86	WAL	JDM	WFD	ISSUED FOR OPERATIONS & INCORP. ECR'S 95/112651A, 08/1111331A
1	11/24/84	DWS	JNM	PEF	CODE BREAKS ADDED
0	06/29/84	MNS	JNM	WFD	ISSUED FOR FIELD VERIFICATION
REV	DATE	DSGN	CHKD	CE	DESCRIPTION

FPL ENERGY Seabrook Station
DIESEL GENERATOR
FUEL OIL SYSTEM TRAIN "A"
DETAIL

PID-1-DG-B20459

FP 20669	9	EMERG. DIESEL GEN. JACKET WTR. EXP. TANK
FP 21070	9	EMERG. DIESEL GEN. FUEL OIL DAY TANK
9763-F-202102	16	DG FUEL & LUBE OIL P&I DIAGRAM
REF. DRAWING NO.	REV	TITLE



NOTES:

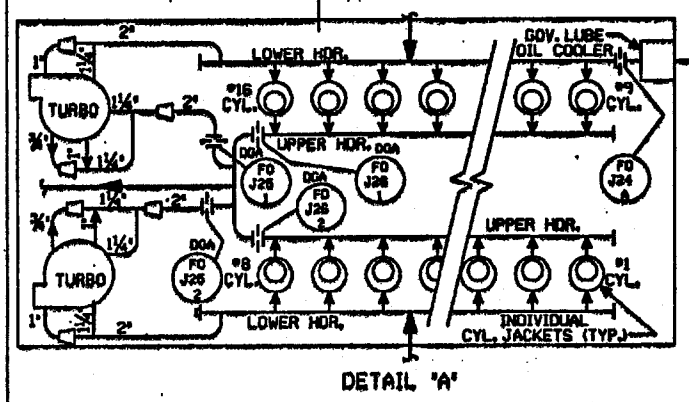
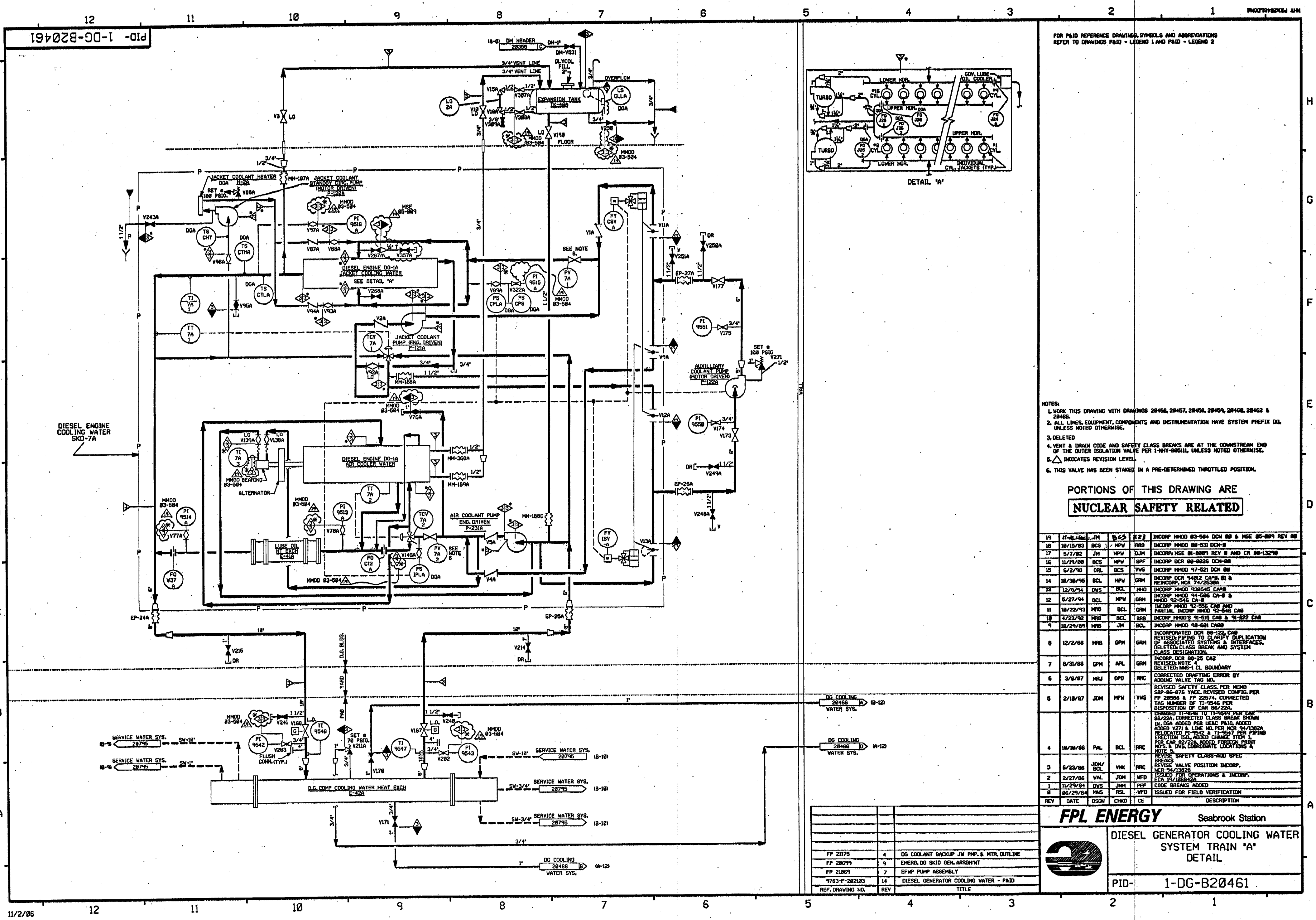
1. WORK THIS DRAWING WITH DRAWINGS 28465, 28457, 28454, 28463, 28465, 28468 & 28467.	28465, 28457, 28454, 28463, 28465, 28468
2. ALL LINES, EQUIPMENT, COMPONENTS AND INSTRUMENTATION HAVE SYSTEM PREFIX DG, (UNLESS NOTED OTHERWISE).	
3. DELETED.	
4. DELETED.	
5. Δ INDICATES REVISION LEVEL.	
6. VENT, DRAINS AND TEST COON. SPACE CLASS AND CODE BREAKS ARE AT THE DOWNSTREAM END OF THE OUTER ISOLATION VALVE PER 1-NHT-000111 UNLESS NOTED OTHERWISE.	

[illegible]

DIESEL GENERATOR FUEL OIL
SYSTEM TRAIN 'B'
DETAIL

PID- 1-DG-B20464

FP 21070	9	EMERG DIESEL GEN FUEL OIL DAY TANK
FP 20669	9	EMERG DIESEL GEN JACKET WTR EXP TAN
9763-F-202102	16	D.G. FUEL & LUBE OIL P&I DIAGRAM
REF. DRAWING NO.	REV	



FOR P&ID REFERENCE DRAWINGS SYMBOLS AND ABBREVIATIONS
REFER TO DRAWINGS P&ID - LEGEND 1 AND P&ID - LEGEND 2

- NOTES:
1. WORK THIS DRAWING WITH DRAWINGS 28456, 28457, 28458, 28459, 28460, 28462 & 28465.
 2. ALL LINES, EQUIPMENT, COMPONENTS AND INSTRUMENTATION HAVE SYSTEM PREFIX DG, UNLESS NOTED OTHERWISE.
 3. DELETED.
 4. VENT & DRAIN CODE AND SAFETY CLASS BREAKS ARE AT THE DOWNSTREAM END OF THE OUTER ISOLATION VALVE PER 1-NY-885ULL, UNLESS NOTED OTHERWISE.
 5. Δ INDICATES REVISION LEVEL.
 6. THIS VALVE HAS BEEN STAKED IN A PRE-DETERMINED THROTTLED POSITION.

PORTIONS OF THIS DRAWING ARE
NUCLEAR SAFETY RELATED

REV	DATE	DSGN	CHKD	CE	DESCRIPTION
19	11/14/83	JM	BCS	223	INCORP. MMD 83-584 DCH 88 & MSE 85-889 REV 88
18	10/15/83	BCS	MPV	RRB	INCORP. MMD 88-531 DCH-8
17	5/7/82	JM	MPV	DJM	INCORP. MSE 81-8889 REV 8 AND CR 88-13278
16	11/19/88	BCS	MPV	SPF	INCORP. DCR 88-8826 DCH-88
15	6/2/98	DRL	BCS	VWS	INCORP. MMD 97-521 DCH 88
14	10/30/95	BCL	MPV	GRM	INCORP. DCR 94812 CA-8, 81 & REINCORP. MCR 74/25384
13	12/9/94	DWS	BCL	MWD	INCORP. MMD 938545 CA-8
12	5/27/94	BCL	MPV	GRM	INCORP. MMD 94-586 CA-8 & MMD 92-546 CA-8
11	10/22/93	MRS	BCL	GRM	INCORP. MMD 92-556 CA-8 AND PARTIAL INCORP. MMD 92-546 CA-8
10	4/23/92	MRS	BCL	RRB	INCORP. MMD'S 91-515 CA-8 & 91-522 CA-8
9	10/24/89	MRS	JM	BCL	INCORP. MMD 98-581 CA-8
8	12/2/88	MRS	GPH	GRM	INCORPORATED DCR 88-122, CA-8 REVISED PIPING TO CLARIFY DUPLICATION OF ASSOCIATED SYSTEMS & INTERFACES. DELETED CLASS BREAK AND SYSTEM CLASS DESIGNATION.
7	6/31/88	GPH	APL	GRM	INCORP. DCR 88-25 CA-2 REVISED NOTE 'A' DELETED MMS-1 CL BOUNDARY
6	3/8/87	MJ	DPD	RRC	CORRECTED DRAFTING ERROR BY ADDING VALVE TAG NO.
5	2/18/87	JDM	MPV	VWS	REVISED SAFETY CLASS PER MEMO SSP-88-878 YACC. REVISED CONFIG. PER FP 28598 & FP 22574. CORRECTED TAG NUMBER OF TI-9546 PER DISPOSITION OF CAR 86/22A.
4	10/18/86	PAL	BCL	RRC	CHANGED TI-9546 TO TI-9549 PER CAR 86/22A. CORRECTED CLASS BREAK SHOWN IN DCA ADDED PER LEAD PAID. ADDED V271 & LINE NO. PER MCR 94/1382A. RELOCATED TI-9542 & TI-9547 PER Piping Erection ISL. ADDED CHANGE ITEM 11 PER CAR 82/22A. ADDED FOREIGN PRINT MFS & DNG. COORDINATE LOCATIONS A NOTE = SAFETY CLASS-ADD SPEC.
3	6/23/86	JDM/ BCL	VWK	RRC	REVISE VALVE POSITION INCORP.
2	2/27/86	VAL	JDM	WFD	ISSUED FOR OPERATIONS & INCORP. 15/18828A
1	11/29/84	DWS	JDM	PEF	CODE BREAKS ADDED
0	86/29/84	MRS	RSL	WFD	ISSUED FOR FIELD VERIFICATION

FPL ENERGY

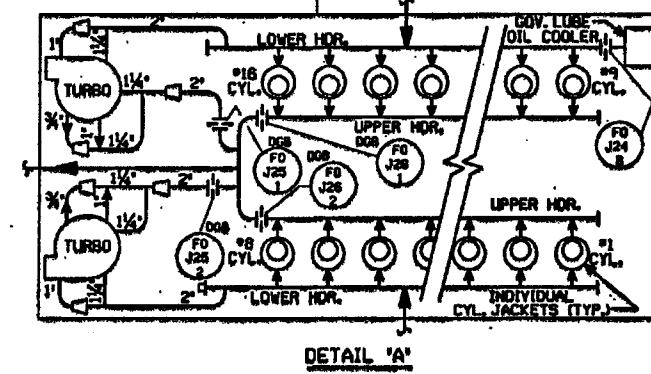
Seabrook Station




**DIESEL GENERATOR COOLING WATER
SYSTEM TRAIN 'A'
DETAIL**

PID- 1-DG-B20461

REV	DATE	DSGN	CHKD	CE	DESCRIPTION
FP 21175	4	DG COOLANT BACKUP JW PMP. & MTR. OUTLINE			
FP 23699	9	EMERG. DG SKID GEN. ARRANGMT			
FP 21069	7	EPWP PUMP ASSEMBLY			
9763-F-282183	14	DIESEL GENERATOR COOLING WATER - P&ID			
REF. DRAWING NO.	REV	TITLE			



1. WORK THIS DRAWING WITH DRAWINGS 28456, 28457, 28463, 28463, 28464, 28465 & 28467.
2. ALL LINES, EQUIPMENT, COMPONENTS AND INSTRUMENTATION HAVE SYSTEM PREFIX DG.
3. DELETED
4. VENT DRAIN & TEST CONN. CODE AND SAFETY CLASS BREAKS ARE AT THE DOWN STREAM END OF THE OUTER ISOLATION VALVE PER 1-WHY-BOSU, UNLESS NOTED OTHERWISE.
5.  INDICATES REVISION LEVEL.
6. DELETED
7. THIS VALVE HAS BEEN STAKED IN A PRE-DETERMINED THROTTLED POSITION.

PORTIONS OF THIS DRAWING ARE
NUCLEAR SAFETY RELATED

18	11-16-96	JH	BSB	RSB	INCOMP MHDD 83-584 DCM 88 & MSE 85-889 REV 88
17	5/25/82	JH	HPW	MKC	INCOMP MHDD 88-9531 DCM 88
16	9/18/81	BGS	HPW	MKC	INCOMP MSE 81-889, REV 81
15	12/1/88	HPW	BGS	SFF	INCOMP DCR 88-2626 DCM 88
14	6/27/98	DNL	BCL	YMS	INCOMP MHDD 97-523 DCM 98
13	18/38/95	BCL	HPW	GRM	INCOMP DCR 9482 DCM 88 & 89, & INCOMP, INCR 74/2538A
REV	DATE	DSGN	CHKD	QRM	DESCRIPTION

FPL ENERGY

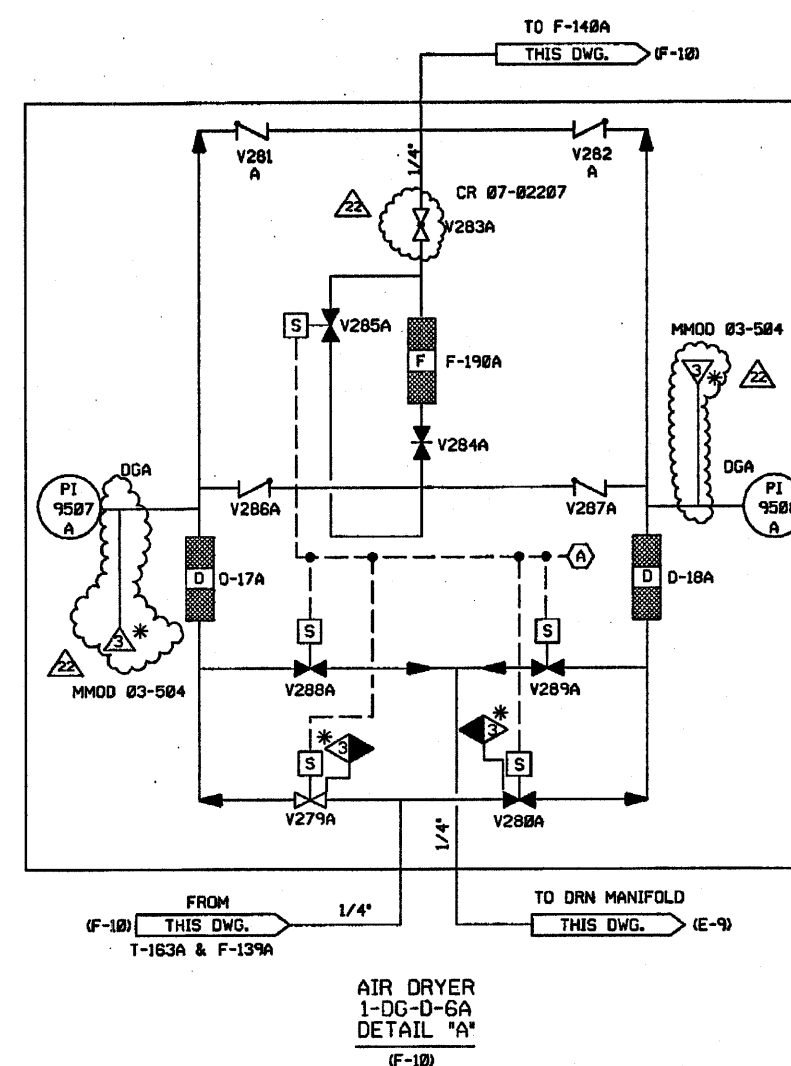
Seabrook Station



DIESEL GENERATOR COOLING WATER
SYSTEM TRAIN "B"
DETAIL

PID- 1-DG-B20466

[illegible]



1. WORK THIS DRAWING WITH DRAWINGS 20456, 20457, 20458, 20459, 20461, & 20462.
2. ALL LINES, EQUIPMENT, COMPONENTS AND INSTRUMENTATION HAVE SYSTEM PREFIX DG, UNLESS NOTED OTHERWISE.
3. DELETED
4. \triangle - INDICATES REVISION LEVEL.
5. VENTS, DRAINS AND TEST CONN. CODE AND SAFETY CLASS BREAKS ARE AT THE DOWN STREAM END OF THE OUTER ISOLATION VALVE PER 1-NHY-805111, UNLESS NOTED OTHERWISE.
6. INSTRUMENT REFERENCE
(A) TO CONTROL PANEL ON SKD-17A, PP-22574.

PORTIONS OF THIS DRAWING ARE
NUCLEAR SAFETY RELATED

22	5-16-87	BCS	JTM	R&B	INCOMP MM00 83-584 DCN-00 & CR 07-02207 REV. 0
21	6/9/83	JM	BCS	MKC	INCOMP CR 00-04158 REV. 00 & CR 02-01023 REV. 00
20	5/17/82	JM	MPW	MKC	INCOMP MM01 81-533 DCN-00
19	6/12/88	BCS	DWS	MKC	INCOMP DCR 97-0045 DCN-08
18	18/7/95	BCS	MPW	MKC	INCOMP DCR 97-0045 DCN-05, 06
17	7/14/99	BCS	MPW	DJM	INCOMP MM00 96-566 DCN-00, DCR 97-45 DCN-00, 02
16	6/19/97	MPW	DWS	RSQ	INCOMP DCR 94-44 CA#0, 8, 9 & 14
15	4/2/96	MPW	DWS	GRM	INCOMP DCR 94-142 CA#0 & 1
14	5/30/95	DWS	MPW	JHR	INCOMP MM00 940525 CA#0
13	12/9/94	DWS	BCL	MHD	INCOMP MM00 930545 CA#0
12	8/1/94	BCL	DWS	GRM	INCOMP DCR 90-29 CA-2
11	5-27-94	BCL	MPW	GRM	INCOMP MM00 94-586 CA0, 03 & MM00 92-546 CA-1
10	10-22-93	MRB	BCL	GRM	INCOMP MM00'S 92-546 CA0, 92-556 CA0
9	9-17-92	DWS	BCL	1W	INCOMP DCR 920841 CA#0
8	4-17-92	MRB	BCL	RAB	INCOMP MM00 91-615 CA0
7	10/5/89	MRB	APL	WFD	INCOMP DCR 89-95T CA 0 REVISED INSTR. TAG PREFIX PER SIS VERIFICATION
6	8/14/89	MRB	APL	MAC	INCOMP DCR 89-33 CA 03 ADDED VALVES V230A & V259A VERIFIED INSTALLED AND TAGGED AS SHOWN. ADDED TAG NUMBERS & EQUIPMENT I.D., ADDED DCR DESIGNATION TO J.M. REVISED LOCATION OF FILTER & FOLDER TO PROVIDE MORE SYSTEM DETAIL. REVISED SIS CLASS PER MHD 50F-06-076-1AEC.
5	1/22/87	JDM	PAL	RRC	DELETED NOTE 5. INCOMP DR 82/288A, REVISED PER P 420083, 20099 & PIPING ERECTION ISO'S ADDED VALVE NO'S V8001 & V8002 INCOMP.ECA 99/806174A.
4	18/3/86	MAP	JDM	RRC	INCOMP NCR 74/3501A, ECA 19/8082834A
3	6/19/86	JDM	DWS	RRC	ISSUED FOR OPERATIONS & INCOMP. E.C.A 99/000935 & 99/10251A
2	2/27/84	WAL	JNM	WFD	CODE BREAKS ADDED
1	11/21/84	MNS	RSL	WFD	ISSUED FOR FIELD VERIFICATION
REV	DATE	DSGN	CHKD	CF	DESCRIPTION

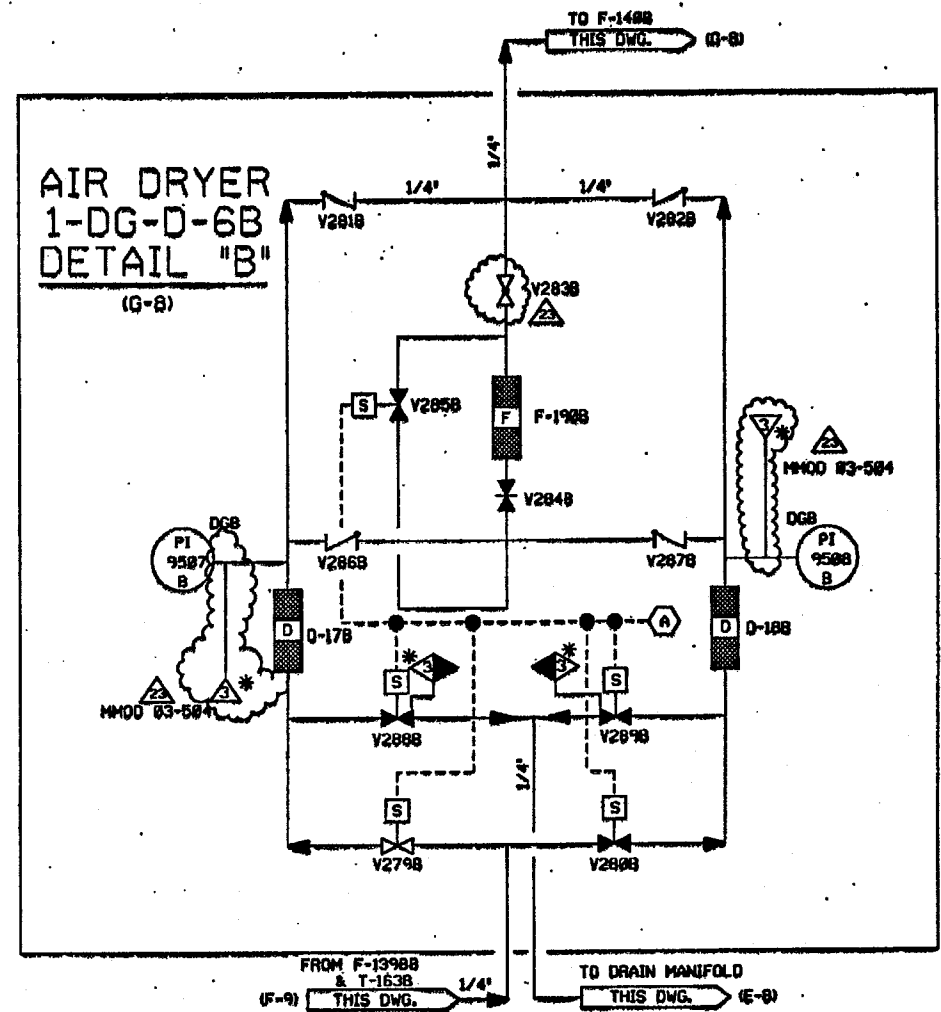
FPL ENERGY

Seabrook Station

DIESEL GENERATOR STARTING AIR
SYSTEM TRAIN 'A'
DETAIL

PID- 1-DG-B20460

FP-20893	12	EMERG.DIESEL STARTING AIR ASSEMBLY SKD-17A	
FP-20699	13	DIESEL GENERATOR STARTING AIR SKD-7A	
9763-F-202101	13	DIESEL GENERATOR-AIR SYSTEM P&ID	
REF. DRAWING NO.	REV	TITLE	



PORTIONS OF THIS DRAWING ARE
NUCLEAR SAFETY RELATED

23	11/20/86	BCS	JWL	RRB	INCCOR MH00 82-584 DCM 88
22	12/31/83	JM	BCS	RRB	INCCOR DCR 80-04158 REV 88 & CR 82-01823 REV 88
21	12/19/86	JM	BCS	MKC	INCCOR DCR 82-12483
20	8/21/82	BCS	JM	MKC	INCCOR DCR 97-0045 DCM-88
19	5/16/82	MPW	JM	MKC	INCCOR MH00 81-533 DCM 88
18	11-17-79	BCS	MPW	MKC	INCCOR DCR 97-845 DCM-88
17	8-26-79	BCS	MPW	WFZ	INCCOR MH00 76-566 DCM-88, DCR 97-45 DCM-82,5
16	6-26-87	MPW	WDS	WFZ	INCCOR DCR 94-44 DCM-8, 6, 9 & 14
15	4-2-86	BCS	DWS	GRM	INCCOR DCR 94-12 CA-8, 8L
14	5-15-85	BCL	MPW	JPS	INCCOR MH00 94-572 CA-8
13	12-9-94	DWS	BCL	MKD	INCCOR MH00 938545 CA-8
12	6/1/94	BCL	WDS	GRM	INCCOR DCR 88-829 CA-82
11	5-18-94	BCL	MPW	RRB	INCCOR MH00 94-586 CML 3 & MH00 92-545 CML1
10	18-12-72	NRB	BCL	RRB	INCCOR DCR 92-546 CML 32-556 CA-8
9	18-3-73	DWS	WDS	RRB	INCCOR DCR 928481 CA-8
8	4/12/82	NRB	BCL	RRB	INCCOR MH00 93854 CA-8
7	11/28/89	NRB	PAL	GRM	INCORPORATED DCR 89-33 CMB3 & MH00 89-561, ADDDED NOTE 5 & 6.
6	9/8/88	NRW	BCL	NRG	ADDED VALVE PER WORK REQUEST OF V003285 AND CONT. COORDINATES
5	1/22/87	JOM	NRG	NRG	ADDED TAG NUMBERS & EQUIPMENT I.D. INCCOR EIA 94082834A, REVISED LOCATION OF FILTER & FOUNDER PER F.P.88 ADDED LUBE OIL SUPPLY TO PROVIDE CLASS 1 STEEL BOLT 36-875-5-1/2 CLASS 1 NUT 36-875-5-1/2
4	10/3/86	PAL	MPW	NRG	REVISED PER EIA 94082834A AND 94082834A INCCOR 94082834A REINCCOR NCR 82/358, WAS IN ERROR ADDED THE TO FIELD F-20883 AND 10-17-86 ADDED V00800, REV'D END COMES ON FLX, 10-17-86 2080, ADDED FIELD COMMENTS TO REF BLOCK, ADDED DCR TO INSTR PER DEAC 10-17-86, ADDED PER LEGAL NOTE.
3	6/16/86	JOM	DWS	NRG	INCCOR, EIA 941125158 INCCOR, DCR 92/335 & 74/3581
2	8/27/78	DWS	JM	WFD	ISSUED FOR OPERATION INCCOR, INCCOR 92/335 & 74/3581
1	11/25/84	WAL	JNM	PEF	CODE BREAKS ADDED
0	86/29/84	MNS	JNM	WFD	ISSUED FOR FIELD VERIFICATION
REV	DATE	DSGN	CHKD	CE	DESCRIPTION

Seabrook Station



DIESEL GENERATOR
STARTING AIR SYSTEM
TRAIN 'B' DETAIL

PID- 1-DG-B20465

FP 28893	11	EMERG DG AIR ASSY GEN ARRANGEMENT
FP 20699	9	EMERG DG SKID UNIT
FP 28931	15	EMERG DG START AIRCONT SCHEM AND LEGEND
9763-F-282181	13	DIESEL GENERATOR - AIR SYSTEMS PAID
REF. DRAWING NO.	REV	TITLE

PID-1-DG-B20458

FOR P&ID REFERENCE DRAWINGS, SYMBOLS AND ABBREVIATIONS
REFER TO DRAWINGS P&ID - LEGEND 1 AND P&ID - LEGEND 2

- NOTES:
1. WORK THIS DRAWING WITH DRAWINGS 20456, 20457 & 20459 THRU 20462.
 2. ALL LINES, EQUIPMENT, COMPONENTS AND INSTRUMENTATION HAVE SYSTEM PREFIX DG.
 3. UNLESS NOTED OTHERWISE.
 4. DELETED.
 5. VENT AND DRAIN CODE AND SAFETY CLASS BREAKS ARE AT THE DOWNSTREAM END OF THE ISOLATION VALVE PER DESIGN STANDARD 1-MHY-005111, UNLESS NOTED OTHERWISE.
 6. VALVE DISC DRILLED WITH 1/4" ORIFICE TO ALLOW BACKFLOW WITH ENGINE IN STANDBY.

PORTIONS OF THIS DRAWING ARE
NUCLEAR SAFETY RELATED

16	16-31-06	JM	BCL	GRM	INCORP MMOD 83-587 DCN 00
15	1/18/85	JM	BCS	HR	INCORP DCR 84-018 - DCN 00
14	18/15/83	BCS	MPW	RRB	INCORP MMOD 82-541 DCN-0.2 & MSE 83-160 REV.0
13	6/18/82	JM	BCS	MKC	INCORP CR 88-84158 REV.00, MMOD 81-531 DCN-00, 01
12	1/30/82	BCS	MPW	MKC	INCORP MSE 81-0005 REV.01
11	10/6/79	BCS	MPW	CWE	INCORP MMOD 98-554 DCN-00,01
10	7/30/77	MPW	BCS	VMS	INCORP MMOD 96-550 DCN 01
9	4/1/76	BCL	MPW	GRM	INCORP DCR 94-12 CAB, 01
8	5/27/74	MPW	BCL	GRM	INCORP MMOD 92-546 CAB, DCR 90-29 CA-8
7	5/11/72	MRB	BCL	GRM	INCORP MMOD 91-622 CAB
6	10/29/70	MRB	JM	BCL	INCORP MMOD 90-601 CAB00
5	02/18/67	JDM	PHL	VMS	REVISED NOTE 4 REVISED PRESSURE SWITCH TIE-IN PER FP-20530, COMPLETE REDRAW TO CLARIFY LAYOUT FOR BETTER FLOW DIA UTILIZATION, ADD LINE SIZES TO SKID PIPING.
4	10/16/65	MAP	WRD	RRC	REVISED PER PIPING ERECTION ISO, ADDED LOCATION COORDS.
3	6/23/66	VAL	VNK	RRC	UPDATED PER LATEST P&ID & INCORP NCR 93/228C
2	2/27/66	VAL	JDM	WFO	ISSUED FOR OPERATIONS
1	11/29/64	DWS	JNM	PEF	CODE BREAKS ADDED
0	6/29/64	MNS	JNM	WFO	ISSUED FOR FIELD VERIFICATION
REV	DATE	DSGN	CHKD	CE	DESCRIPTION

FPL ENERGY

Seabrook Station

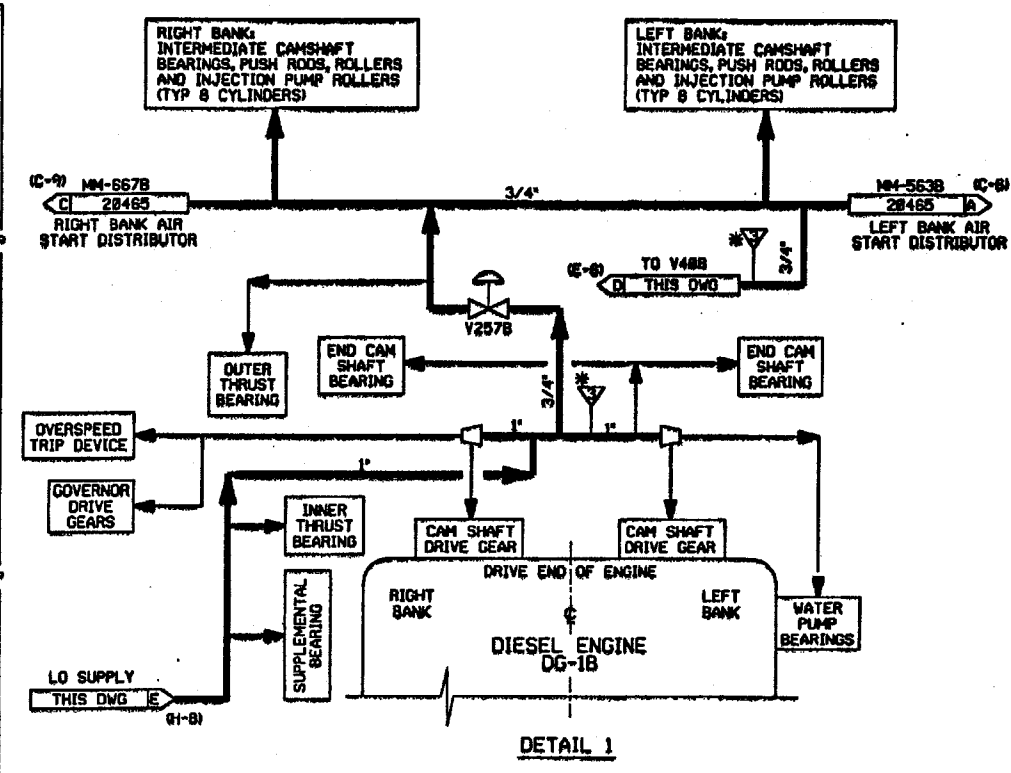
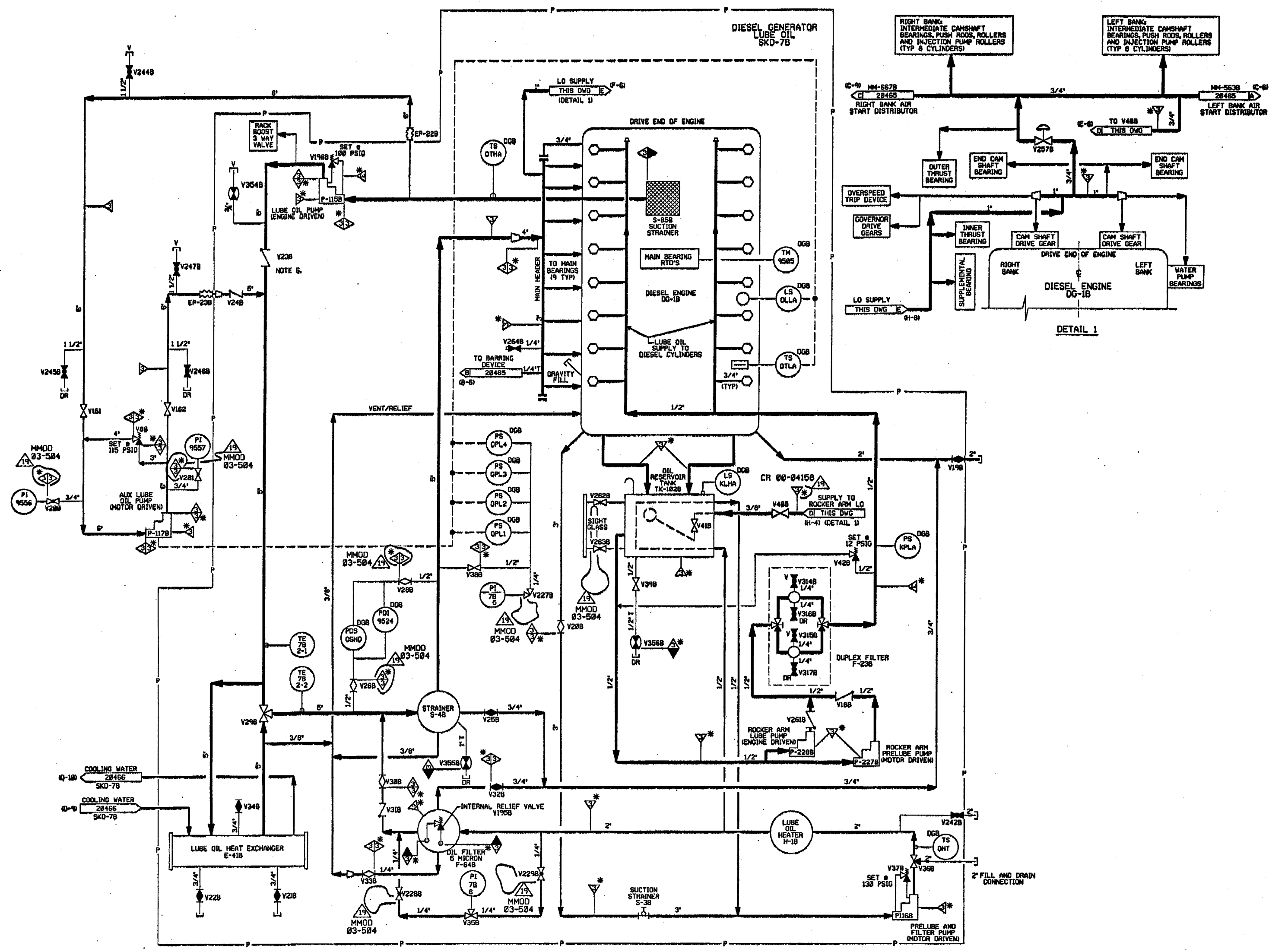
DIESEL GENERATOR LUBE OIL
SYSTEM TRAIN 'A'
DETAIL

PID- 1-DG-B20458

9763-F-202102	16	DIESEL GENERATOR FUEL & LUBE OIL P&ID
REF. DRAWING NO.	REV	TITLE

08/07/06

PID-1-DG-B20463



FOR PAID REFERENCE DRAWINGS, SYMBOLS AND ABBREVIATIONS
REFER TO DRAWINGS P&ID - LEGEND 1 AND P&ID - LEGEND 2

- NOTES:
1. WORK THIS DRAWING WITH DRAWINGS 20463, 20464, 20465, 20466, & 20467.
 2. ALL LINES, EQUIPMENT, COMPONENTS AND INSTRUMENTATION HAVE SYSTEM PREFIX DG, UNLESS NOTED OTHERWISE.
 3. DELETED
 4. VENT AND DRAIN SAFETY CLASS AND CODE BREAKS ARE AT THE DOWNSTREAM END OF THE ISOLATION VALVE PER DESIGN STANDARD 1-MET-BEULL, UNLESS NOTED OTHERWISE.
 5. Δ INDICATES REVISION LEVEL.
 6. VALVE DISC DRILLED WITH 1/4" DRIFTE TO ALLOW BACKFLOW WITH ENGINE IN STANDSTILL.

PORTIONS OF THIS DRAWING ARE
NUCLEAR SAFETY RELATED

REV	DATE	DSN	CHKD	CE	DESCRIPTION
1	10/25/84	MNS	RSL	MFO	ISSUED FOR FIELD VERIFICATION
2	11/29/84	DVS	JNM	PEF	CODE BREAKS ADDED
3	6/22/86	VAL	YMK	RRC	UPDATE PER LATEST UAC PIAD
4	10/16/86	PAL	VRD	RRC	INCORP. ECA 15/10/86, DCA ADDED PER UAC. PAID ADDED NOTE 5, FOREIGN PRINTS TO REF. BLOCK & DNG COORD TO CONTINUATION PL. KSL.
5	2/18/87	JOM	PAL	YMS	REVISED PRESSURE SWITCH TIE-IN FOR PP 28096, COMPLETE REFORM TO CLARIFY LAYOUT FOR BETTER P&ID DIAGRAM UTILIZATION, ADDED LINE SIZES TO SKID PIPING.
6	10/29/88	MNS	JH	BCL	INCORP. MMSD 92-546 C&B & DCR 92-522 C&B
7	5/11/92	MNS	BCL	GRM	INCORP. MMSD 91-522 C&B
8	6/16/94	MNS	MPW	RRB	INCORP. MMSD 92-546 C&B & DCR 92-522 C&B
9	5/29/94	MPW	BCL	GRM	BACKED OUT DCR 92-522
10	11/27/96	BCL	MPW	GRM	PARTIAL INCORP. DCR 92-522 C&B
11	7/28/97	MPW	BCL	VVS	INCORP. MMSD 96-558 DCA, B1
12	8/25/99	DVS	BCL	CVE	INCORP. MMSD 98-554 DCA, B2 & B1
13	1/22/01	BCL	MPW	KCC	INCORP. MMSD 01-005 REV. 0
14	12/1/01	BCL	MPW	KCC	PARTIAL INCORP. DCR 00-8629 DCA, B2
15	6/13/02	JH	MPW	BCL	INCORP. CR 00-84158 REV. 00
16	12/31/03	JH	BCL	KCC	INCORP. CR 00-84158 REV. 00
17	3/24/04	BCL	JH	KCC	INCORP. DCR 04-808 - DCA, B2
18	12/8/04	JH	BCL	KCC	INCORP. MMSD 03-108 REV. 00, MMSD 02-541 DCA, B2 & B1, DCR 02-523 DCA, B2
19	4-3-06	JH	BCL	KCC	INCORP. MMSD 03-504 DCA, B2 & B1, INCORP. CR 00-84158 REV. 00

FPL ENERGY

Seabrook Station



**DIESEL GENERATOR LUBE OIL
SYSTEM TRAIN 'B'
DETAIL**

PID- 1-DG-B20463

CATEGORY 1

REV	DATE	DSN	CHKD	CE	DESCRIPTION
1	10/25/84	MNS	RSL	MFO	ISSUED FOR FIELD VERIFICATION
2	11/29/84	DVS	JNM	PEF	CODE BREAKS ADDED
3	6/22/86	VAL	YMK	RRC	UPDATE PER LATEST UAC PIAD
4	10/16/86	PAL	VRD	RRC	INCORP. ECA 15/10/86, DCA ADDED PER UAC. PAID ADDED NOTE 5, FOREIGN PRINTS TO REF. BLOCK & DNG COORD TO CONTINUATION PL. KSL.
5	2/18/87	JOM	PAL	YMS	REVISED PRESSURE SWITCH TIE-IN FOR PP 28096, COMPLETE REFORM TO CLARIFY LAYOUT FOR BETTER P&ID DIAGRAM UTILIZATION, ADDED LINE SIZES TO SKID PIPING.
6	10/29/88	MNS	JH	BCL	INCORP. MMSD 92-546 C&B & DCR 92-522 C&B
7	5/11/92	MNS	BCL	GRM	INCORP. MMSD 91-522 C&B
8	6/16/94	MNS	MPW	RRB	INCORP. MMSD 92-546 C&B & DCR 92-522 C&B
9	5/29/94	MPW	BCL	GRM	BACKED OUT DCR 92-522
10	11/27/96	BCL	MPW	GRM	PARTIAL INCORP. DCR 92-522 C&B
11	7/28/97	MPW	BCL	VVS	INCORP. MMSD 96-558 DCA, B1
12	8/25/99	DVS	BCL	CVE	INCORP. MMSD 98-554 DCA, B2 & B1
13	1/22/01	BCL	MPW	KCC	INCORP. MMSD 01-005 REV. 0
14	12/1/01	BCL	MPW	KCC	PARTIAL INCORP. DCR 00-8629 DCA, B2
15	6/13/02	JH	MPW	BCL	INCORP. CR 00-84158 REV. 00
16	12/31/03	JH	BCL	KCC	INCORP. CR 00-84158 REV. 00
17	3/24/04	BCL	JH	KCC	INCORP. DCR 04-808 - DCA, B2
18	12/8/04	JH	BCL	KCC	INCORP. MMSD 03-108 REV. 00, MMSD 02-541 DCA, B2 & B1, DCR 02-523 DCA, B2
19	4-3-06	JH	BCL	KCC	INCORP. MMSD 03-504 DCA, B2 & B1, INCORP. CR 00-84158 REV. 00

08/31/06

PID-1-DG-B20462

FOR PAID REFERENCE DRAWINGS SYMBOLS
AND ABBREVIATIONS REFER TO DRAWINGS
PAID-LEGEND 1 AND PAID-LEGEND 2.

PORTIONS OF THIS DRAWING ARE
NUCLEAR SAFETY RELATED

- NOTES:
1. WORK THIS DRAWING WITH DRAWINGS 20456, 20457, 20458, 20459, 20460, & 20461.
 2. ALL LINES, EQUIPMENT, COMPONENTS AND INSTRUMENTATION HAVE SYSTEM PREFIX DG, UNLESS OTHERWISE NOTED.
 3. DELETED
 4. VENT AND DRAIN CODE AND SAFETY CLASS BREAKS ARE AT THE DOWNSTREAM END OF THE OUTER ISOLATION VALVE PER DESIGN STANDARD 1-MNY-00011, UNLESS NOTED OTHERWISE.
 5. Δ INDICATES REVISION LEVEL.

6	11/16/86	JM	W-2	222	INCORP MMOD 83-584 DCM 88
5	10/6/99	BCS	WFM	CVE	INCORP MMOD 980554 DCM 88.01
4	7/30/97	WFM	BCS	YWS	INCORP MMOD 960558 DCM 81
3	4/2/96	BCL	WFM	GRM	INCORP DCR 94-12 C&B & ADDED NOTE 5.
2	10/7/86	PNL	HAP	BRC	ADDED PIPE & CAP PER ERECTION ISO. ADDED DCA PER LEGAL PAID ADDED FOREIGN PRINTS TO REF BLOCK
1	02/27/86	VAL	JDM	WFD	ISSUED FOR OPERATIONS
0	06/29/84	MNS	RSL	WFD	ISSUED FOR FIELD VERIFICATION
REV	DATE	DSGN	CHKD	CE	DESCRIPTION

FPL ENERGY Seabrook Station

**DIESEL GENERATOR INTAKE, EXHAUST
& CRANKCASE VACUUM SYSTEM
TRAIN 'A'
DETAIL**

PID- 1-DG-B20462

FP20589	89	EMERG DG INTX, EXT 4 & CRK SCHEM
FP20983	88	EMERG DG AIR INLET FILTER (RY TYPE)
FP20848	87	EMERG DG EXHAUST SIL, 148 INCH 26 INLETS
9763-F-202181	13	DIESEL GENERATOR AIR SYSTEM PAID
REF. DRAWING NO.	REV	TITLE

