



Typical dolomite Tof_{b-1} and thin clay beds exposed in trench T-11C. Clay beds are subhorizontal and define bedding. Photo roll 01JLB-1.

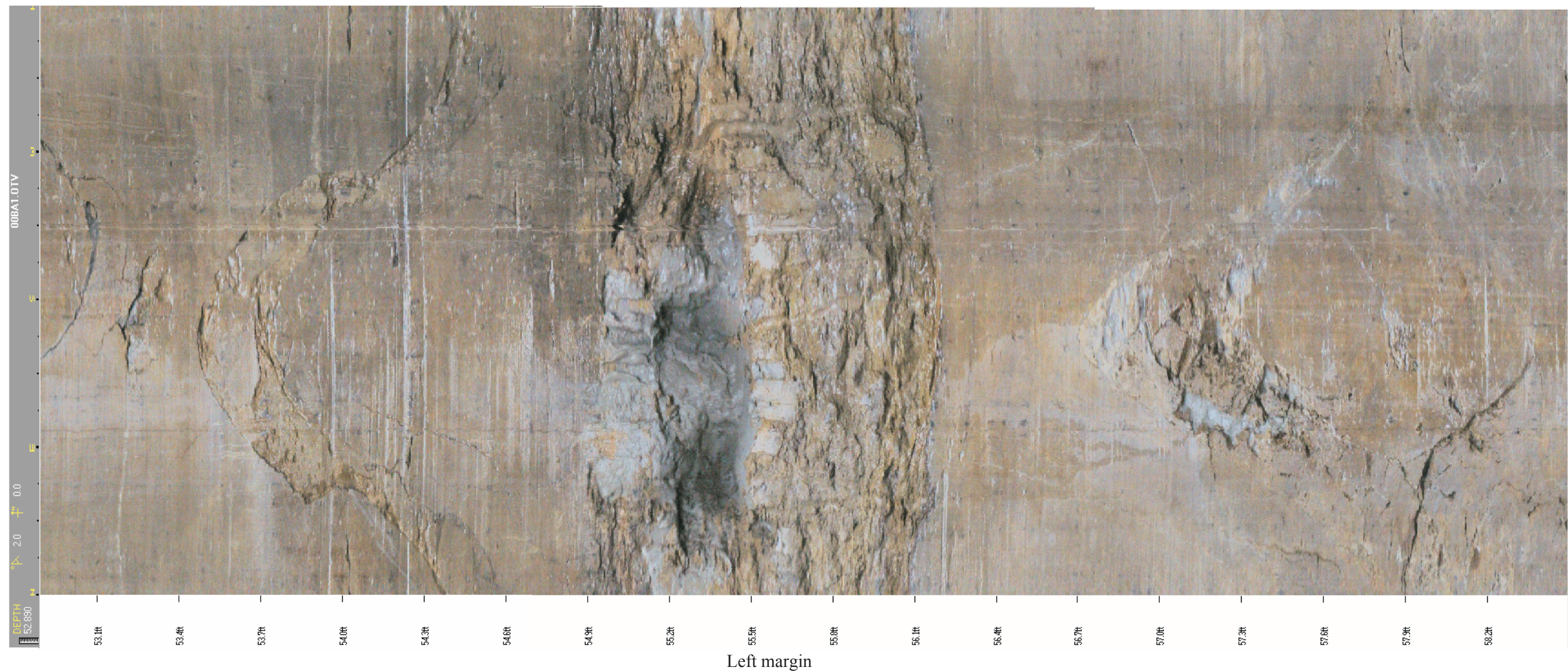
FSAR UPDATE

DIABLO CANYON ISFSI

**FIGURE 2.6-24
CLAY BEDS AND DOLOMITE IN
TRENCH T-11C**

Revision 0 June 2004

Right margin



Optical televIEWER image of 50.0 to 58.5 feet, boring 00BA-1. Image “unwraps” the round borehole and displays picture as flat; right and left margins are the same vertical line in the boring. Clay bed at 55 feet (center of photo between 54.9 and 56.1 feet) is within the dolomite (Tof_{b-1}). Fractures in the dolomite that intercept the boring at a steep angle appear as sinusoidal shapes. The fracture between 53.7 and 54.6 feet dips 65 degrees and is partly filled with clay where it breaks into two or more joints. Three intersecting joints are present between 57.0 and 58.3 feet; drilling has broken parts of rock between the subparallel joints near 57.3 feet. (12/5/00)

FSAR UPDATE
DIABLO CANYON ISFSI
FIGURE 2.6-25 TELEVIEWER IMAGE OF CLAY BED AT 55 FEET, BORING 00BA-1

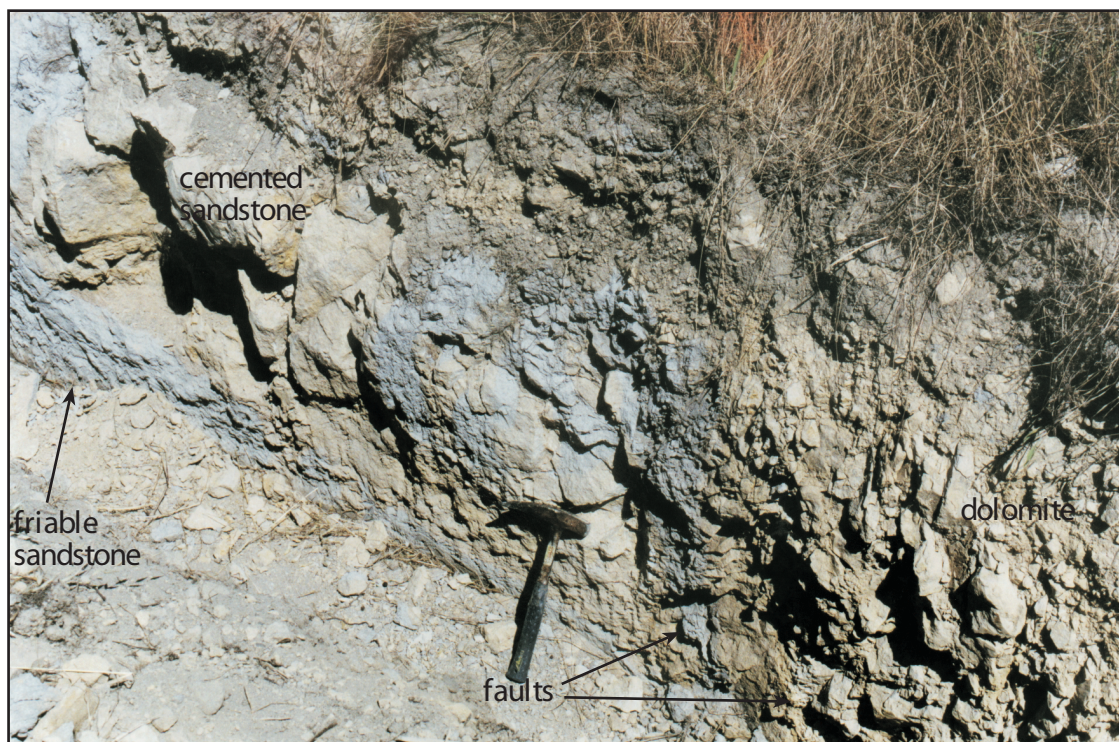


Typical appearance of clay bed and bedding laminations in a section of core at 130 feet from boring 01-I, south of the ISFSI. Clay bed occurs within Tof_{b-1} .

Photo roll 01JL B-ba.

FSAR UPDATE
DIABLO CANYON ISFSI
FIGURE 2.6-26
CLAY BED AT 130 FEET IN BORING 01-1

Revision 0 June 2004



Typical small bedrock faults in trench T-1. The faults juxtapose friable sandstone (Tof_{b-2a}) on left against fractured dolomite (Tof_{b-1}) on right. A remnant of unaltered, cemented sandstone (Tof_{b-2}) remains in upper left. Photo roll JLB-4.

FSAR UPDATE
DIABLO CANYON ISFSI
FIGURE 2.6-27
TYPICAL SMALL BEDROCK FAULTS
IN TRENCH T-1